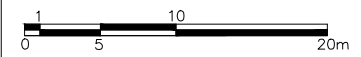


WILLOW ASTER CIR.

1  
L.1

TREE CONSERVATION REPORT & LANDSCAPE PLAN  
SCALE: 1:500



GENERAL NOTES:

- It is the responsibility of the appropriate contractor or official to report any errors, omissions or discrepancies on this plan with actual site conditions to the Landscape Architect before proceeding with construction.
- The contractor is to notify all utility companies and authorities prior to any excavation and ascertain locations of underground services.
- The contractor is to reinstate all areas and items damaged as a result of construction activity.
- The contractor is to comply with all pertinent codes and by-laws.
- The contractor is to maintain a positive surface run-off throughout the entire construction period.
- The Landscape Architect is not responsible for subsurface conditions.
- The contractor is to identify all existing trees to remain on site with the Landscape Architect prior to construction.
- The contractor is to stake the proposed location of all plant material in conjunction with the Landscape Architect prior to excavation.
- Minimum distances for selected deciduous trees are as follows:
  - Building Foundations 4.5m medium trees,
  - 7.5m large trees
  - Sidewalks 1.5m
  - Public Streets 2.5m
  - Underground Infrastructure 2.0m
- All trees within 1m of underground utility trenches are to be excavated by hand.
- Remove all protective wrapping from tree trunks after installation.
- Staking of trees shall only be performed if necessary.
- Ensure that mulch is pulled back a min. distance of 75mm from base of tree trunk.

EXISTING TREE LIST

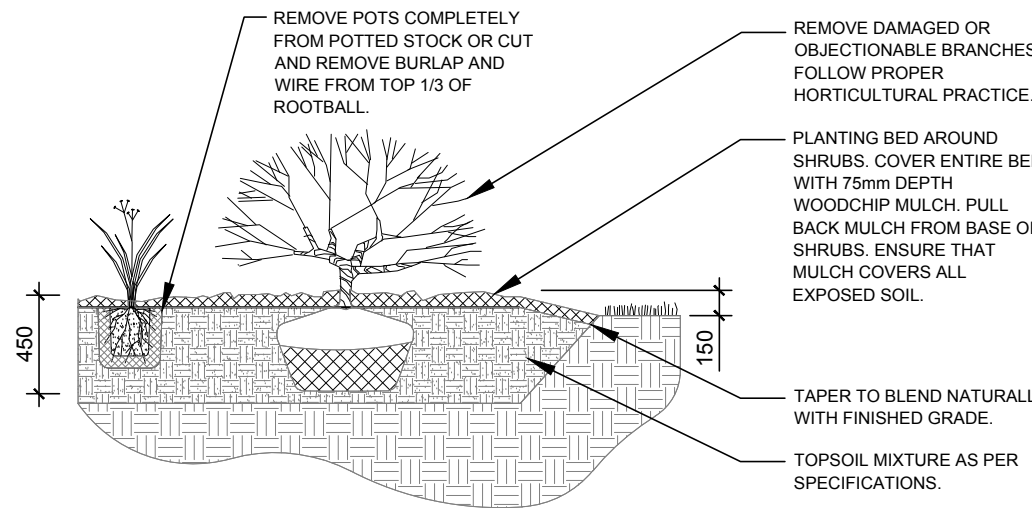
KEY	QTY.	BOTANICAL NAME	COMMON NAME	SIZE	CONDITION	REMARKS	OWNERSHIP	COMMENTS
1	1	<i>Picea glauca</i>	White Spruce	720mm DBH	Fair	To be removed	2405 Mer Bleue Road	Approx. 60% of needles on tree- in fair condition
2	1	<i>Picea glauca</i>	White Spruce	450mm DBH	Fair	To be removed	2405 Mer Bleue Road	Approx. 50% of needles on tree. In fair condition
3	1	<i>Acer saccharum</i>	Sugar Maple	370mm DBH	GOOD	To be removed	2405 Mer Bleue Road	100% canopy- growing under OHW
4	1	<i>Abies balsamea</i>	Balsam Fir	560mm DBH	FAIR	To be removed	2405 Mer Bleue Road	Tree is in good condition
5	1	<i>Picea glauca</i>	White Spruce	390mm DBH	GOOD	To be removed	2405 Mer Bleue Road	Tree is in good condition
6	1	<i>Picea glauca</i>	White Spruce	340mm DBH	GOOD	To be removed	2405 Mer Bleue Road	Tree is in good condition
7	1	<i>Thuja occidentalis</i>	Eastern White Cedar	400mm DBH	GOOD	To be removed	2405 Mer Bleue Road	Tree is in good condition
8	1	<i>Picea glauca</i>	White Spruce	540mm DBH	GOOD	To be removed	2405 Mer Bleue Road	Tree is in good condition
9	1	<i>Picea glauca</i>	White Spruce	200mm DBH	GOOD	To be removed	2405 Mer Bleue Road	Tree is in good condition
10	1	<i>Picea glauca</i>	White Spruce	250mm DBH	GOOD	To be removed	2405 Mer Bleue Road	Tree is in good condition
11	1	<i>Ulmus americana</i>	American Elm	320mm DBH	GOOD	To be removed	2405 Mer Bleue Road	Tree is in good condition
12	1	<i>Picea glauca</i>	White Spruce	480mm DBH	GOOD	To be removed	2405 Mer Bleue Road	Tree is in good condition
13	1	<i>Picea glauca</i>	White Spruce	410mm DBH	GOOD	To be removed	2405 Mer Bleue Road	Unmaintained deciduous hedgerow- invasive species
14	1	<i>Picea glauca</i>	White Spruce	490mm DBH	GOOD	To be removed	2405 Mer Bleue Road	Approx 70% canopy- tree is in fair condition
15	1	<i>Pinus sylvestris</i>	Scots Pine	140mm DBH	FAIR	To be removed	2405 Mer Bleue Road	Tree is in fair condition- split leader
16	1	<i>Populus deltoides</i>	Eastern Cottonwood	790mm DBH	FAIR	To be removed	2405 Mer Bleue Road	Tree is in good condition
17	1	<i>Acer saccharum</i>	Sugar Maple	560mm DBH	FAIR	To be removed	2405 Mer Bleue Road	Approx. 20% canopy- tree is in poor condition
18	1	<i>Picea glauca</i>	White Spruce	270mm DBH	GOOD	To be removed	2405 Mer Bleue Road	Tree is in good condition
19	1	<i>Thuja occidentalis</i>	Eastern White Cedar	6x200-250mm DBH	GOOD	To be removed	2405 Mer Bleue Road	Tree is in good condition
20	1	<i>Malus domestica</i>	Apple	170mm DBH	GOOD	To be removed	2405 Mer Bleue Road	Tree is in good condition
21	1	<i>Malus domestica</i>	Apple	210mm DBH	GOOD	To be removed	2405 Mer Bleue Road	Tree is in good condition
22	1	<i>Acer saccharum</i>	Sugar Maple	120mm DBH	GOOD	To be removed	2405 Mer Bleue Road	Hedgerow is in good condition
23	8	<i>Populus deltoides</i>	Eastern Cottonwood	100-150mm DBH	GOOD	To be removed	2405 Mer Bleue Road	Tree is in good condition
24	1	<i>Picea glauca</i>	White Spruce	390mm DBH	GOOD	To be removed	2405 Mer Bleue Road	Tree is in good condition- invasive species
25	1	<i>Rhamnus cathartica</i>	Common Buckthorn	2x120mm DBH	GOOD	To be removed	2405 Mer Bleue Road	Tree is in good condition- can be hazardous at this size
26	1	<i>Populus deltoides</i>	Eastern Cottonwood	800mm DBH	GOOD	To be removed	2405 Mer Bleue Road	

\*DENOTES NUMEROUS

PROPOSED PLANT LIST

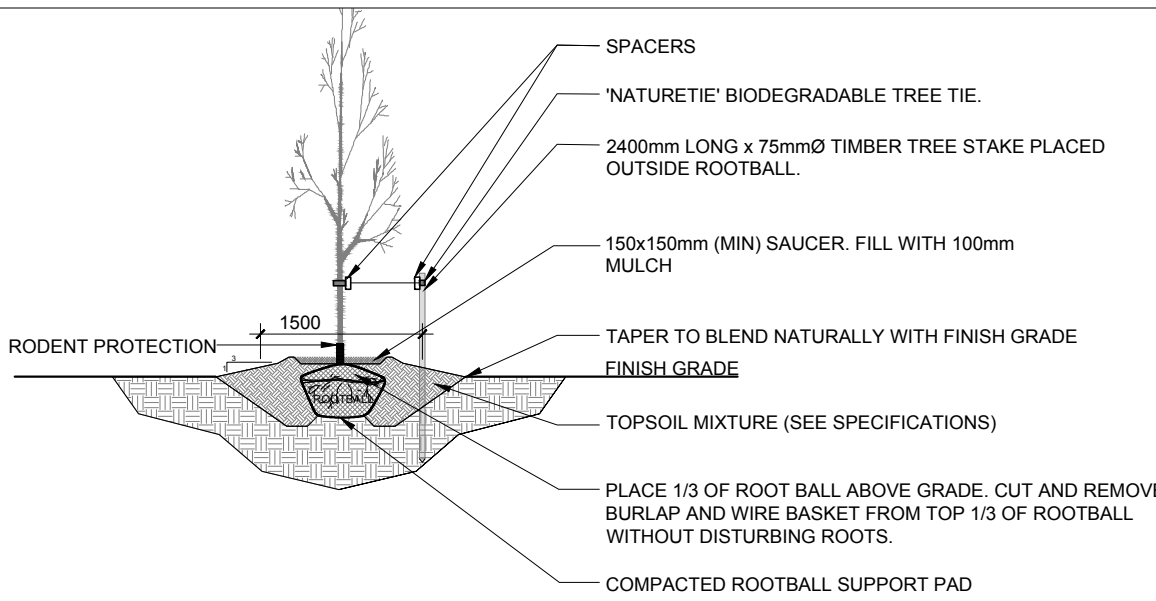
KEY	QTY.	BOTANICAL NAME	COMMON NAME	SIZE	CONDITION	REMARKS
TREES						
CS	3	<i>Picea pungens</i>	Colorado Spruce	2000mm ht.	B&B	
* FM	7	<i>Acer x freemanii</i>	Freeman's Maple	50mm cal.	B&B	Male tree
GB	4	<i>Ginkgo biloba</i>	Maidenhair Tree	50mm cal.	B&B	
* HB	3	<i>Celtis occidentalis</i>	Hackberry	50mm cal.	B&B	
* HL	5	<i>Gleditsia triacanthos 'Draves'</i>	Streetkeeper Honey Locust	50mm cal.	B&B	
JL	1	<i>Syringa reticulata</i>	Japanese Tree Lilac	50mm cal.	B&B	
* JV	1	<i>Juniperus virginiana</i>	Eastern Redcedar	2000mm ht.	B&B	Single leader
* SB	4	<i>Amelanchier canadensis</i>	Serviceberry	50mm cal.	B&B	
* SH	3	<i>Gleditsia triacanthos 'Shademaster'</i>	Shademaster Honey Locust	50mm cal.	B&B	Native to S. Ont
* SM	4	<i>Acer saccharum</i>	Sugar Maple	50mm cal.	B&B	
SHRUBS						
AC	26	<i>Ribes alpinum</i>	Alpine Currant	800 mm ht.	Potted	1200 mm o.c.
JH	18	<i>Juniperus sabina 'Calgary Carpet'</i>	Calgary Carpet Juniper	800mm spr.	Potted	1000mm o.c.
RR	35	<i>Rosa rugosa</i>	Rugosa Rose	800 mm ht.	Potted	1200 mm o.c.
SF	30	<i>Sorbaria sorbifolia 'Sem'</i>	Sem False Spiraea	600mm ht.	Potted	1000 mm o.c.
* WC	265	<i>Thuja occidentalis 'Clumps'</i>	Native White Cedar Clumps	2000mm ht.	Potted	600 mm o.c.
ORNAMENTAL GRASSES						
BL	52	<i>Leymus arenarius 'Blue Dune'</i>	Blue Lyme Grass	250mm pot	Potted	800 mm o.c.
KF	163	<i>Calamagrostis 'Karl Foerster'</i>	Karl Foerster Grass	250mm pot	Potted	800 mm o.c.
OD	96	<i>Calamagrostis 'Overdam'</i>	Overdam Grass	250mm pot	Potted	800 mm o.c.

ALL PLANT MATERIAL IS PROPOSED ON PRIVATE PROPERTY  
\*INDICATES NATIVE SPECIES



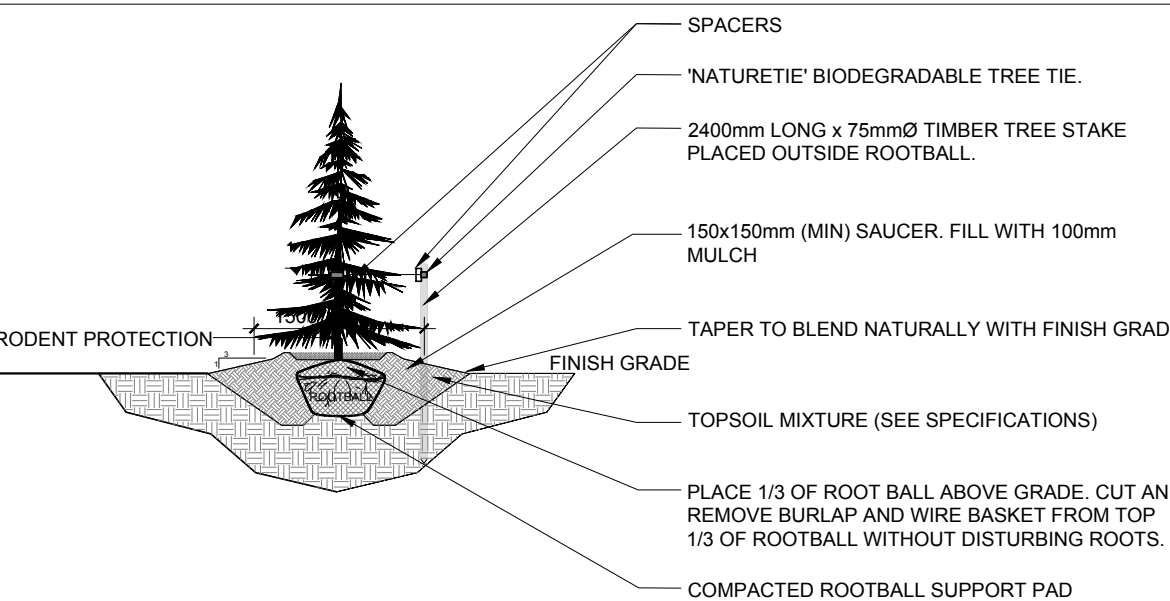
2  
L.1

SHRUB / PERENNIAL PLANTING  
SCALE: NTS



3  
L.1

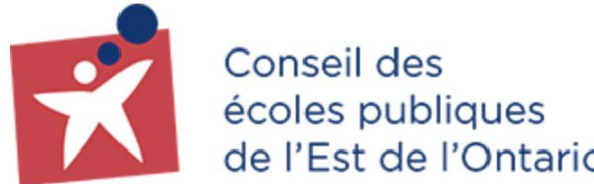
DECIDUOUS TREE PLANTING  
SCALE: NTS



4  
L.1

CONIFEROUS TREE PLANTING  
N.T.S.

CLIENT



CONSULTANTS  
ARCHITECTS

grc architects

47 Cannon Street, Suite 401,  
Ottawa, Ontario K1P 1H7  
Tel: (613) 541-2000, 1613-341-1180  
info@grcarchitects.com www.grcarchitects.com

CIVIL  
ENGINEERS



ENGINEERING | INGÉNIÉRIE

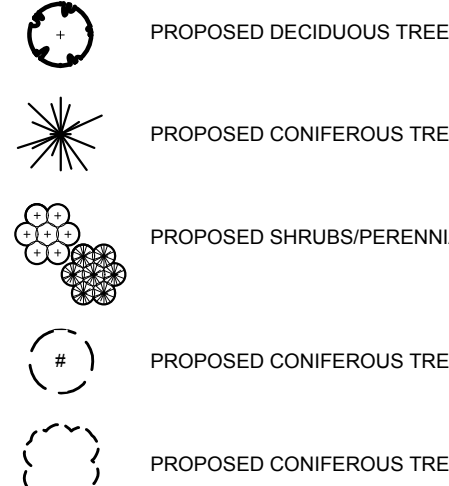
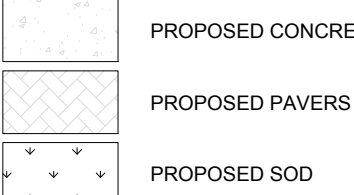
5430 Canotek Road | Ottawa, ON, K1J 9G2  
www.lrl.ca | (613) 842-3434

SURVEYORS

Callon Dietz INCORPORATED

ONTARIO LAND SURVEYORS  
CARLETON PLACE LONDON NORTH BAY  
Requests: callondietz.com callondietz.com

LEGEND



4	ISSUED FOR 66% REVIEW	01/31/2025	ML	JL
3	ISSUED FOR DISCUSSION AND REVIEW	01/29/2025	ML	JL
2	ISSUED AS PER ARCHITECTS COMMENTS	01/24/2025	CAT	JL
1	REVIEWED FOR DISCUSSION AND REVIEW	12/13/2024	ML	JL
No.	Issue	Date	MM/DD/YY	DR CK
JAMES B. LENNOX & ASSOCIATES INC. LANDSCAPE ARCHITECTS 3332 CARLING AVE. OTTAWA, ONTARIO K2H 5A8 Tel. (613) 722-5168 Fax. (613) 722-5168				

PROJECT

PROPOSED HIGH SCHOOL- ESP ORLEANS SUD  
2405 MER BLEUE ROAD, OTTAWA ON

DRAWING

TREE CONSERVATION REPORT &  
LANDSCAPE PLAN

STAMP



SCALE

AS SHOWN

START DATE

OCTOBER 2024

PROJECT NO.

DRAWING NO.

L.1

PLOT SIZE ARCH-D