

LEGEND

	PROPOSED ELEVATION		EXISTING CONCRETE CURB
	EXISTING ELEVATION		EXISTING VALVE & VALVE BOX
	GRADE AND DIRECTION		EXISTING SERVICE POST
	MAXIMUM 3:1 SIDESLOPE		EXISTING HYDRANT
	PROPOSED MECHANICAL AREA DRAIN		EXISTING COMBINED MH
	PROPOSED PLANTER DECK DRAIN		EXISTING CATCHBASIN
	DIRECTION OF MAJOR SYSTEM OVERLAND FLOW		EXISTING CATCHBASIN MH
	PROPERTY LINE		EXISTING UTILITY POLE
	UNDERGROUND STRUCTURE		OH WIRES
	BUILDING ABOVE		FFE FINISHED FLOOR ELEVATION
	BUILDING ENTRANCE / EXIT		P1 LEVEL PARKING GARAGE LEVEL ELEVATION
	RAISED PLANTER BED		USF UNDERSIDE OF FOOTING ELEVATION
	RIP RAP AS PER OPSD 801.010		

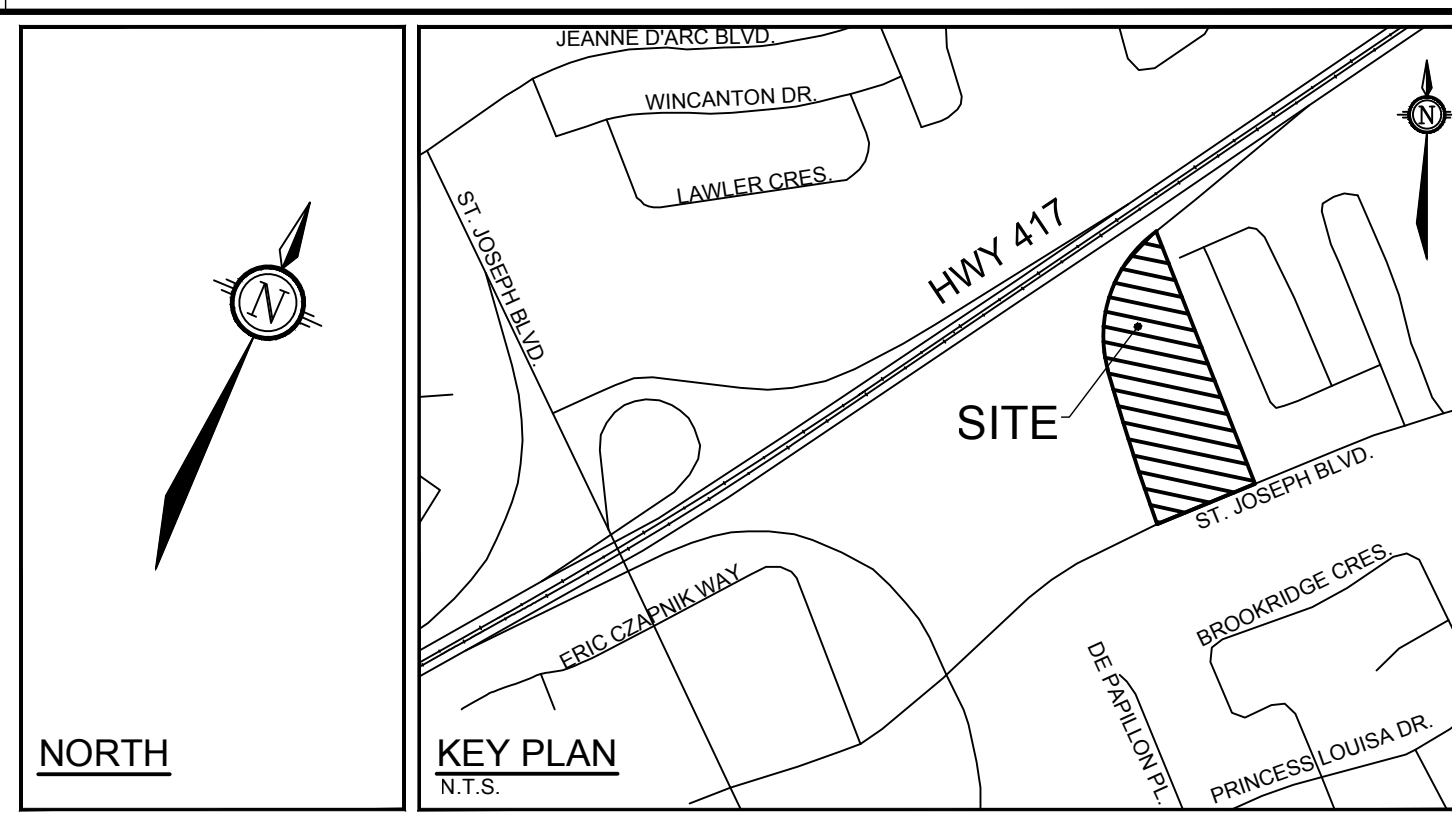
- ### EROSION AND SEDIMENT CONTROL NOTES :
- ALL EROSION AND SEDIMENT CONTROLS ARE TO BE INSTALLED TO THE SATISFACTION OF THE ENGINEER AND THE CITY OF OTTAWA. THEY ARE TO BE APPROPRIATE TO THE SITE CONDITIONS, PRIOR TO UNDERTAKING ANY SITE ALTERATIONS (FILLING, GRADING, REMOVAL OF VEGETATION, ETC.) AND DURING ALL PHASES OF SITE PREPARATION AND CONSTRUCTION. THESE PRACTICES ARE TO BE IMPLEMENTED IN ACCORDANCE WITH THE CURRENT BEST MANAGEMENT PRACTICES FOR EROSION AND SEDIMENT CONTROL AND SHOULD INCLUDE AS A MINIMUM THOSE MEASURES INDICATED ON THE PLAN.
 - A LIGHT DUTY SILT FENCE BARRIER WILL ALSO BE INSTALLED AROUND THE CONSTRUCTION AREA (WHERE APPLICABLE). THESE CONTROL MEASURES WILL REMAIN IN PLACE UNTIL CONSTRUCTION IS COMPLETE.
 - TO PREVENT SURFACE EROSION FROM ENTERING ANY STORM SEWER SYSTEM DURING CONSTRUCTION, FILTER BAGS WILL BE PLACED UNDER GRATES OF NEARBY SURFACE CATCHBASINS AND MANHOLE STRUCTURES. TERRAFIX® ULTRA SILT SOCK (FILTER SOCK) IS TO BE USED AT THE OPENING OF ALL CURB INLET CATCHBASINS. A LIGHT DUTY SILT FENCE BARRIER WILL ALSO BE INSTALLED (PER OPSD 219.110) AROUND THE CONSTRUCTION AREA (WHERE APPLICABLE). IN AREAS WHERE SILT FENCINGS CANNOT BE INSTALLED PER OPSD 219.110 (i.e. HARD SURFACES), A FILTER SOCK SHALL BE SUBSTITUTED. THESE CONTROL MEASURES WILL REMAIN IN PLACE UNTIL CONSTRUCTION IS COMPLETE.
 - THE SEDIMENT CONTROL MEASURES SHALL ONLY BE REMOVED WHEN, IN THE OPINION OF THE ENGINEER, THE MEASURES ARE NO LONGER REQUIRED. NO CONTROL MEASURES MAY BE PERMANENTLY REMOVED WITHOUT PRIOR AUTHORIZATION FROM THE ENGINEER.
 - THE CONTRACTOR SHALL IMMEDIATELY REPORT TO THE ENGINEER ANY ACCIDENTAL DISCHARGES OF SEDIMENT MATERIAL INTO ANY STORM SEWER SYSTEM. APPROPRIATE RESPONSE MEASURES, INCLUDING ANY REPAIRS TO EXISTING CONTROL MEASURES OR THE IMPLEMENTATION OF ADDITIONAL CONTROL MEASURES, SHALL BE CARRIED OUT BY THE CONTRACTOR WITHOUT DELAY.
 - THE CONTRACTOR ACKNOWLEDGES THAT FAILURE TO IMPLEMENT EROSION AND SEDIMENT CONTROL MEASURES MAY BE SUBJECT TO PENALTIES IMPOSED BY ANY APPLICABLE REGULATORY AGENCY.
 - ROADWAYS ARE TO BE SWEEP AS REQUIRED OR AS DIRECTED BY THE ENGINEER AND/OR MUNICIPALITY.
 - THE CONTRACTOR SHALL ENSURE PROPER DUST CONTROL IS PROVIDED WITH THE APPLICATION OF WATER (AND IF REQUIRED, CALCIUM CHLORIDE) DURING DRY PERIODS.

- ### BENCHMARK NOTES:
- ELEVATIONS SHOWN ARE GEODETIC AND ARE REFERRED TO THE CGVD28 GEODETIC DATUM.
 - IT IS THE RESPONSIBILITY OF THE USER OF THIS INFORMATION TO VERIFY THAT THE JOB BENCHMARK HAS NOT BEEN ALTERED OR DISTURBED AND THAT ITS RELATIVE ELEVATION AND DESCRIPTION AGREES WITH THE INFORMATION SHOWN ON THIS DRAWING.
 - BENCHMARK WAS PROVIDED ONPLAN OF SURVEY PART OF LOT 33, CONCESSION 1 (OLD SURVEY) GEOGRAPHIC TOWNSHIP OF CUMBERLAND, CITY OF OTTAWA, SURVEYED BY STANTEC GEOMATICS LTD.

- ### PAVEMENT STRUCTURE:
- LIGHT DUTY PAVEMENT (CAR ONLY PARKING AREAS)
 - 50mm HL3 or SUPERPAVE 12.5
 - 150mm GRANULAR "A" CRUSHED STONE
 - 300mm GRANULAR "B" TYPE II
 - HEAVY DUTY PAVEMENT (ACCESS LANES AND HEAVY TRUCK PARKING AREAS)
 - 40mm HL3 or SUPERPAVE 12.5
 - 50mm HL3 or SUPERPAVE 19.0
 - 150mm GRANULAR "A" CRUSHED STONE
 - 450mm GRANULAR "B" TYPE II

Erosion and Sediment Control Responsibilities:

ESC Measure	Symbol	Specification	Installation Responsibility	During Construction		After Construction Prior to Final Acceptance		After Final Acceptance	
				Inspection Frequency	Approval to Remove	Removal Responsibility	Inspection/Maintenance Responsibility		
Silt Fence	---	OPSD 219.110	Developer's Contractor	Weekly (as a minimum)	Consultant	Developer's Contractor	N/A		
Filter Fabric	[Symbol]	Erosion and Sediment Control Plans	Developer's Contractor	Weekly (as a minimum)	Consultant	Developer's Contractor	N/A		
Mud Mat	[Symbol]	Drawing Details	Developer's Contractor	Weekly (as a minimum)	Developer's Contractor	Developer's Contractor	N/A		
Dust Control	[Symbol]	Location as Required Around Site	Developer's Contractor	Weekly (as a minimum)	Consultant	Developer's Contractor	N/A		
Stabilized Material Stockpiling	[Symbol]	Location as Required by Contractor	Developer's Contractor	Weekly (as a minimum)	Developer's Contractor	Developer's Contractor	N/A		
Sediment Basin (for flows being pumped out of excavations)	[Symbol]	Location as Required by Contractor	Developer's Contractor	After Every Rainstorm	Developer's Contractor	Developer's Contractor	N/A		



- ### GENERAL NOTES:
- COORDINATE AND SCHEDULE ALL WORK WITH OTHER TRADES AND CONTRACTORS.
 - DETERMINE THE EXACT LOCATION, SIZE, MATERIAL AND ELEVATION OF ALL EXISTING UTILITIES PRIOR TO COMMENCING CONSTRUCTION. PROTECT AND ASSUME RESPONSIBILITY FOR ALL EXISTING UTILITIES WHETHER OR NOT SHOWN ON THIS DRAWING.
 - OBTAIN ALL NECESSARY PERMITS AND APPROVALS FROM THE CITY OF OTTAWA BEFORE COMMENCING CONSTRUCTION.
 - BEFORE COMMENCING CONSTRUCTION OBTAIN AND PROVIDE PROOF OF COMPREHENSIVE, ALL RISK AND OPERATIONAL LIABILITY INSURANCE FOR \$5,000,000.00. CONSTRUCTION POLICY TO NAME OWNERS, ENGINEERS AND ARCHITECTS AS CO-INSURED.
 - RESTORE ALL DISTURBED AREAS ON-SITE AND OFF-SITE, INCLUDING TRENCHES AND SURFACES ON PUBLIC ROAD ALLOWANCES TO EXISTING CONDITIONS OR BETTER TO THE SATISFACTION OF MUNICIPAL AUTHORITIES.
 - REMOVE FROM SITE ALL EXCESS EXCAVATED MATERIAL, ORGANIC MATERIAL AND DEBRIS UNLESS OTHERWISE INSTRUCTED BY ENGINEER. EXCAVATE AND REMOVE FROM SITE ANY CONTAMINATED MATERIAL. ALL CONTAMINATED MATERIAL SHALL BE DISPOSED OF AT A LICENSED LANDFILL FACILITY.
 - ALL ELEVATIONS ARE GEODETIC.
 - REFER TO GEOTECHNICAL INVESTIGATION REPORT (Ref No. PG5091-1, REVISION 1, DATED NOVEMBER 6, 2019, AND TREE PLANTING SETBACK RECOMMENDATIONS (Ref No. PG5091-MEMO-01), PREPARED BY PATTERSON GROUP INC. FOR SUBSURFACE CONDITIONS, CONSTRUCTION RECOMMENDATIONS AND GEOTECHNICAL INSPECTION REQUIREMENTS. THE GEOTECHNICAL CONSULTANT IS TO REVIEW ON-SITE CONDITIONS AFTER EXCAVATION PRIOR TO PLACEMENT OF THE GRANULAR MATERIAL.
 - REFER TO ARCHITECTS' AND LANDSCAPE ARCHITECTS' DRAWINGS FOR BUILDING AND HARD SURFACED AREAS AND DIMENSIONS.
 - REFER TO THE 'DEVELOPMENT SERVICING STUDY AND STORMWATER MANAGEMENT REPORT' (R-2023-086) PREPARED BY NOVATECH.
 - SAW CUT AND KEYGRIND ASPHALT AT ALL ROAD CUTS AND ASPHALT TIE-IN POINTS AS PER CITY OF OTTAWA STANDARDS (R10). PROVIDE LINE PARKING PAINTING.
 - CONTRACTOR TO PROVIDE THE CONSULTANT WITH A GENERAL PLAN OF SERVICES INDICATING ALL SERVICING AS-BUILT INFORMATION SHOWN ON THIS PLAN. AS-BUILT INFORMATION MUST INCLUDE: PIPE MATERIAL, SIZES, LENGTHS, SLOPES, INVERT AND T&G ELEVATIONS, STRUCTURE LOCATIONS, VALVE AND HYDRANT LOCATIONS, T&M ELEVATIONS AND ANY ALIGNMENT CHANGES, ETC.

- ### GRADING NOTES:
- ALL TOPSOIL, ORGANIC OR DELETERIOUS MATERIAL MUST BE ENTIRELY REMOVED FROM BENEATH THE PROPOSED PAVED AREAS AS DIRECTED BY THE SITE ENGINEER OR GEOTECHNICAL ENGINEER.
 - EXPOSED SUBGRADES IN PROPOSED PAVED AREAS SHOULD BE PROOF ROLLED WITH A LARGE STEEL DRUM ROLLER AND INSPECTED BY THE GEOTECHNICAL ENGINEER PRIOR TO THE PLACEMENT OF GRANULARS.
 - ANY SOFT AREAS EVIDENT FROM THE PROOF ROLLING SHOULD BE SUB-EXCAVATED AND REPLACED WITH SUITABLE MATERIAL THAT IS FROST COMPATIBLE WITH THE EXISTING SOILS AS RECOMMENDED BY THE GEOTECHNICAL ENGINEER.
 - THE GRANULAR BASE SHOULD BE COMPACTED TO AT LEAST 99% OF THE STANDARD PROCTOR MAXIMUM DRY DENSITY VALUE. ANY ADDITIONAL GRANULAR FILL USED BELOW THE PROPOSED PAVEMENT SHOULD BE COMPACTED TO AT LEAST 95% OF THE STANDARD PROCTOR MAXIMUM DRY DENSITY VALUE.
 - MINIMUM OF 2% GRADE FOR ALL GRASS AREAS UNLESS OTHERWISE NOTED.
 - MAXIMUM TERRACING GRADE TO BE 3:1 UNLESS OTHERWISE NOTED.
 - ALL GRADES BY CURBS ARE EDGE OF PAVEMENT GRADES UNLESS OTHERWISE INDICATED.
 - ALL CURBS SHALL BE BARRIER CURB (150mm) UNLESS OTHERWISE NOTED AND CONSTRUCTED AS PER CITY OF OTTAWA STANDARDS (SC1.1).
 - REFER TO LANDSCAPE PLAN FOR PLANTING AND OTHER LANDSCAPE FEATURE DETAILS.
 - CONTRACTOR TO PROVIDE THE CONSULTANT WITH A GRADING PLAN INDICATING THE AS-BUILT ELEVATIONS OF ALL DESIGN GRADES SHOWN ON THIS PLAN.

NOTE:
THE POSITION OF ALL POLE LINES, CONDUITS, WATERMANS, SEWERS AND OTHER UNDERGROUND AND OVERGROUND UTILITIES AND STRUCTURES IS NOT NECESSARILY SHOWN ON THE CONTRACT DRAWINGS, AND WHERE SHOWN, THE ACCURACY OF THE POSITION OF SUCH UTILITIES AND STRUCTURES IS NOT GUARANTEED. BEFORE STARTING WORK, DETERMINE THE EXACT LOCATION OF ALL SUCH UTILITIES AND STRUCTURES AND ASSUME ALL LIABILITY FOR DAMAGE TO THEM.

OWNER INFORMATION
8417709 CANADA INC.
430 boulevard de l'hôpital, Suite 310
Gatineau, QC J8V 1T7
NAME: PAUL-ANDRÉ CHARBONNEAU
PHONE: (819) 955-8032
EMAIL: paul-andre@chartro.ca

No.	REVISION	DATE	BY
2.	REVISED PER CITY COMMENTS	DEC 23/24	FST
1.	ISSUED FOR SPC APPLICATION	JUL 19/24	FST

SCALE
1:300

DESIGN CV
CHECKED FST
DRAWN CV
CHECKED FST
APPROVED FST

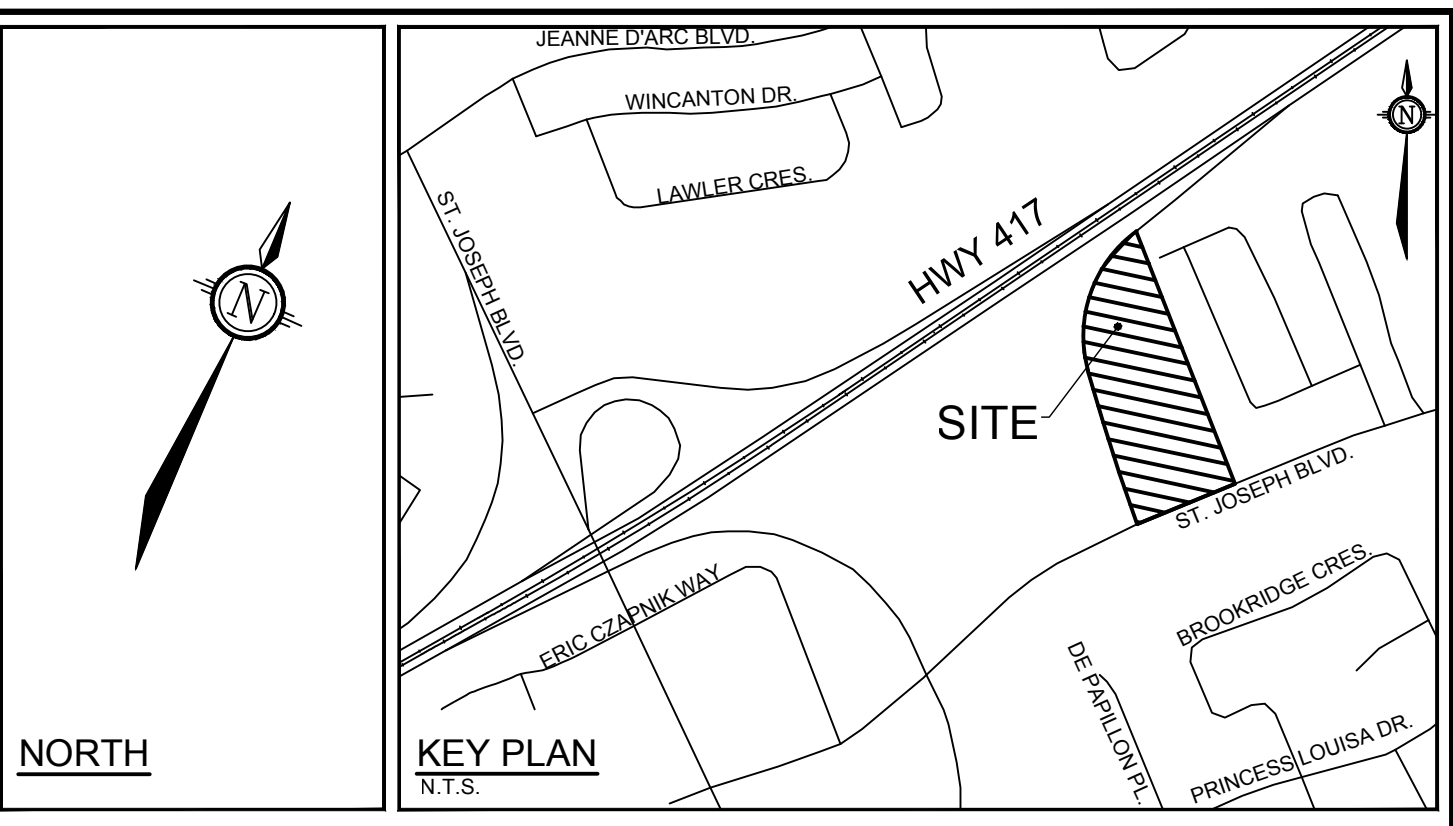
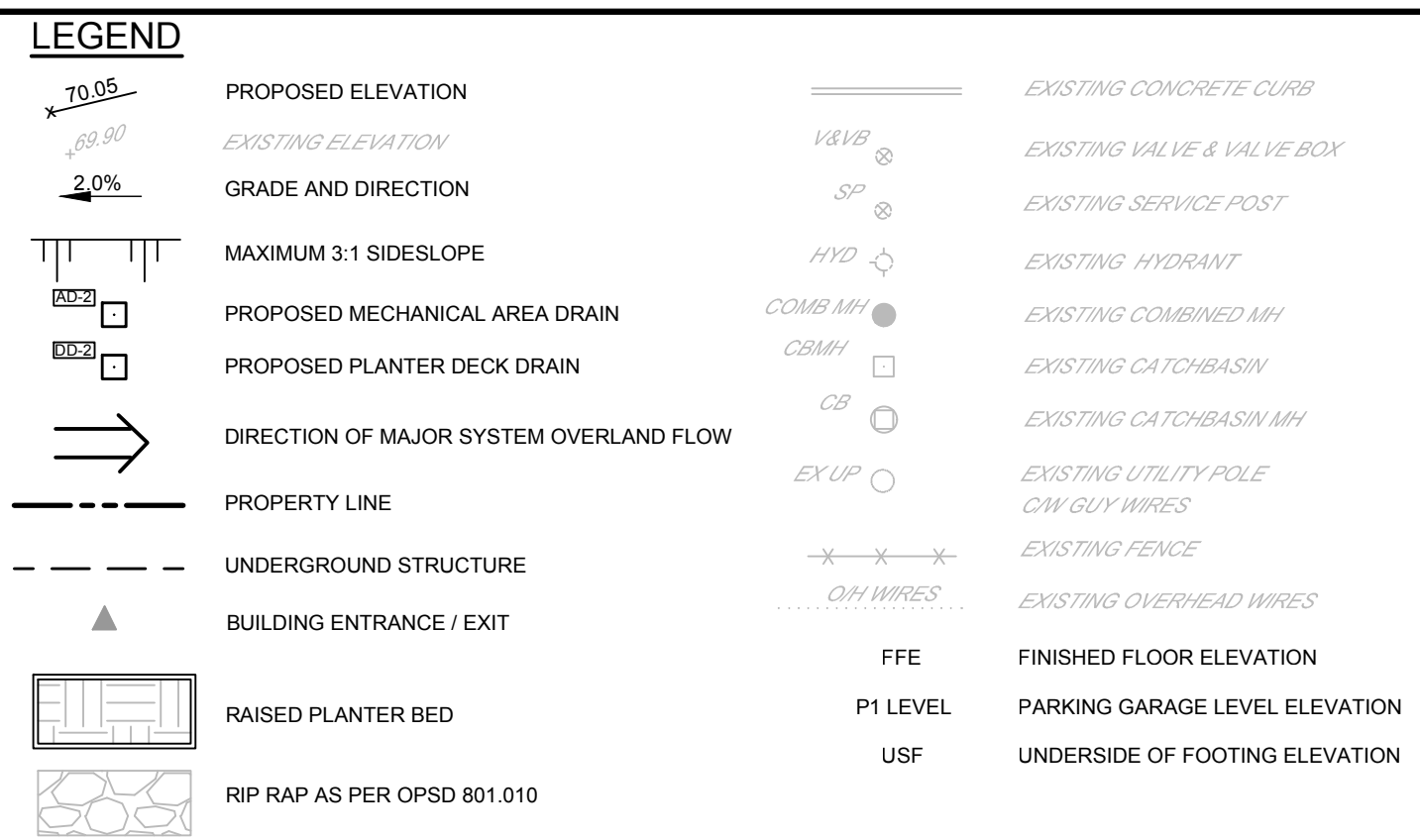
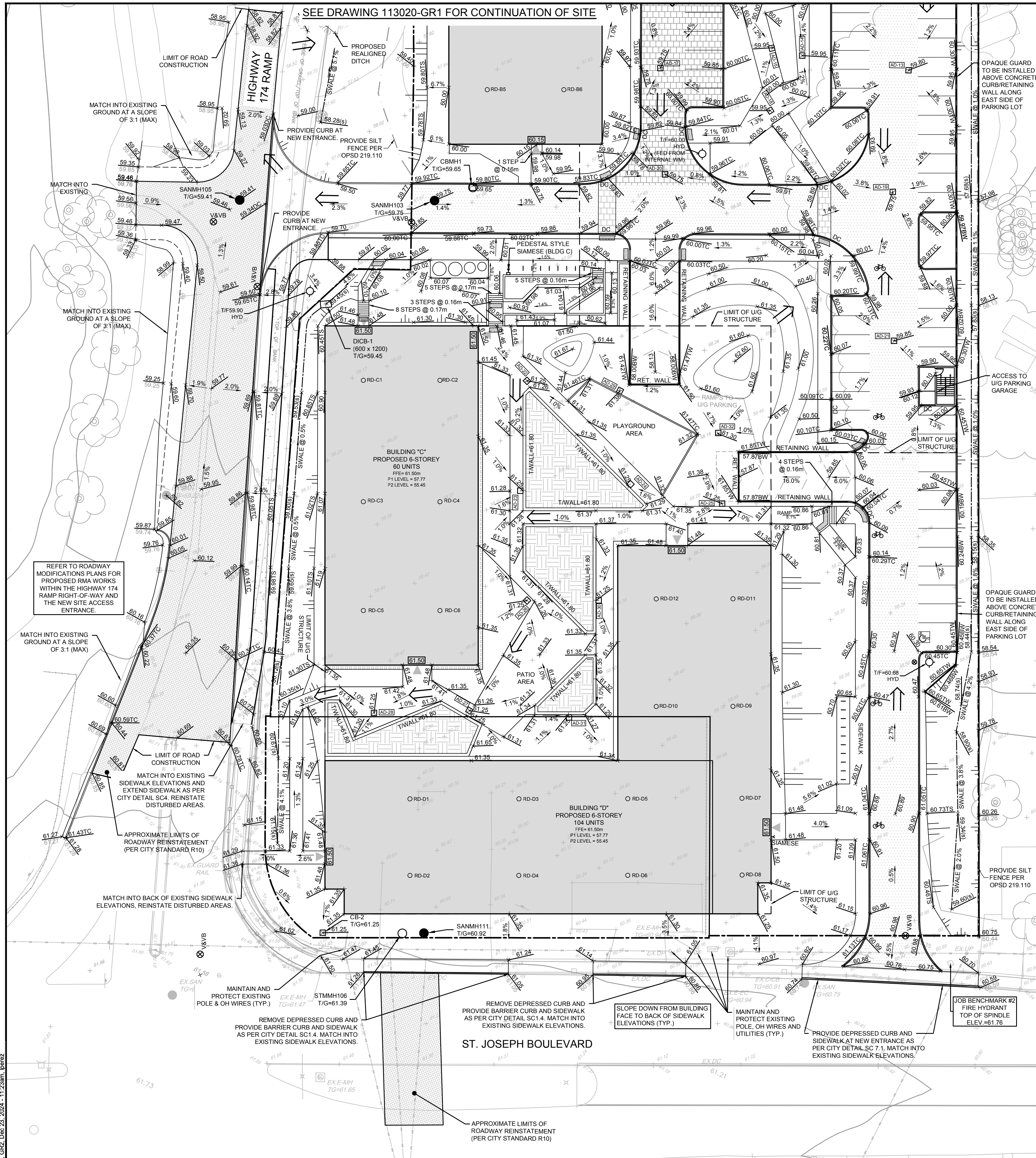
FOR REVIEW ONLY

NOVATECH
Engineers, Planners & Landscape Architects
Suite 200, 240 Michael Cowpland Drive
Ottawa, Ontario, Canada K2M 1P6
Telephone: (613) 254-9643
Facsimile: (613) 254-5867
Website: www.novatech-eng.com

LOCATION
CITY OF OTTAWA
3459 & 3479 ST. JOSEPH BOULEVARD

DRAWING NAME
GRADING AND EROSION & SEDIMENT CONTROL PLAN

PROJECT No. 113020-00
REV # 2
DRAWING No. 113020-GR1
PLAN NBR # 19167



EROSION AND SEDIMENT CONTROL NOTES :

- ALL EROSION AND SEDIMENT CONTROLS ARE TO BE INSTALLED TO THE SATISFACTION OF THE ENGINEER AND THE CITY OF OTTAWA. THEY ARE TO BE APPROPRIATE TO THE SITE CONDITIONS, PRIOR TO UNDERTAKING ANY SITE ALTERATIONS (FILLING, GRADING, REMOVAL OF VEGETATION, ETC.) AND DURING ALL PHASES OF SITE PREPARATION AND CONSTRUCTION. THESE PRACTICES ARE TO BE IMPLEMENTED IN ACCORDANCE WITH THE CURRENT BEST MANAGEMENT PRACTICES FOR EROSION AND SEDIMENT CONTROL AND SHOULD INCLUDE AS A MINIMUM THOSE MEASURES INDICATED ON THE PLAN.
- A LIGHT DUTY SILT FENCE BARRIER WILL ALSO BE INSTALLED AROUND THE CONSTRUCTION AREA (WHERE APPLICABLE). THESE CONTROL MEASURES WILL REMAIN IN PLACE UNTIL CONSTRUCTION IS COMPLETE.
- TO PREVENT SURFACE EROSION FROM ENTERING ANY STORM SEWER SYSTEM DURING CONSTRUCTION, FILTER BAGS WILL BE PLACED UNDER GRATES OF NEARBY SURFACE CATCHBASINS AND MANHOLE STRUCTURES. TERRAFIX BY ULTRA SILT SOCK (FILTER SOCK) IS TO BE USED AT THE OPENING OF ALL CURB INLET CATCHBASINS. A LIGHT DUTY SILT FENCE BARRIER WILL ALSO BE INSTALLED (PER OPSD 219.110) AROUND THE CONSTRUCTION AREA (WHERE APPLICABLE), IN AREAS WHERE SILT FENCINGS CANNOT BE INSTALLED PER OPSD 219.110 (i.e. HARD SURFACES). A FILTER SOCK SHALL BE SUBSTITUTED. THESE CONTROL MEASURES WILL REMAIN IN PLACE UNTIL CONSTRUCTION IS COMPLETE.
- THE SEDIMENT CONTROL MEASURES SHALL ONLY BE REMOVED WHEN, IN THE OPINION OF THE ENGINEER, THE MEASURES ARE NO LONGER REQUIRED. NO CONTROL MEASURES MAY BE PERMANENTLY REMOVED WITHOUT PRIOR AUTHORIZATION FROM THE ENGINEER.
- THE CONTRACTOR SHALL IMMEDIATELY REPORT TO THE ENGINEER ANY ACCIDENTAL DISCHARGES OF SEDIMENT MATERIAL INTO ANY STORM SEWER SYSTEM. APPROPRIATE RESPONSE MEASURES, INCLUDING ANY REPAIRS TO EXISTING CONTROL MEASURES OR THE IMPLEMENTATION OF ADDITIONAL CONTROL MEASURES, SHALL BE CARRIED OUT BY THE CONTRACTOR WITHOUT DELAY.
- THE CONTRACTOR ACKNOWLEDGES THAT FAILURE TO IMPLEMENT EROSION AND SEDIMENT CONTROL MEASURES MAY BE SUBJECT TO PENALTIES IMPOSED BY ANY APPLICABLE REGULATORY AGENCY.
- ROADWAYS ARE TO BE SWEEP AS REQUIRED OR AS DIRECTED BY THE ENGINEER AND/OR MUNICIPALITY.
- THE CONTRACTOR SHALL ENSURE PROPER DUST CONTROL IS PROVIDED WITH THE APPLICATION OF WATER (AND IF REQUIRED, CALCIUM CHLORIDE) DURING DRY PERIODS.

BENCHMARK NOTES:

- ELEVATIONS SHOWN ARE GEODETIC AND ARE REFERRED TO THE CGVD28 GEODETIC DATUM.
- IT IS THE RESPONSIBILITY OF THE USER OF THIS INFORMATION TO VERIFY THAT THE JOB BENCHMARK HAS NOT BEEN ALTERED OR DISTURBED AND THAT ITS RELATIVE ELEVATION AND DESCRIPTION AGREES WITH THE INFORMATION SHOWN ON THIS DRAWING.
- BENCHMARK WAS PROVIDED ONPLAN OF SURVEY PART OF LOT 33, CONCESSION 1 (OLD SURVEY) GEOGRAPHIC TOWNSHIP OF CUMBERLAND, CITY OF OTTAWA, SURVEYED BY STANTEC GEOMATICS LTD.

PAVEMENT STRUCTURE:

- LIGHT DUTY PAVEMENT (CAR ONLY PARKING AREAS)
 - 50mm HL3 or SUPERPAVE 12.5
 - 150mm GRANULAR "A" CRUSHED STONE
 - 300mm GRANULAR "B" TYPE II
- HEAVY DUTY PAVEMENT (ACCESS LANES AND HEAVY TRUCK PARKING AREAS)
 - 40mm HL3 or SUPERPAVE 12.5
 - 50mm HL3 or SUPERPAVE 10.0
 - 150mm GRANULAR "A" CRUSHED STONE
 - 450mm GRANULAR "B" TYPE II

GENERAL NOTES:

- COORDINATE AND SCHEDULE ALL WORK WITH OTHER TRADES AND CONTRACTORS.
- DETERMINE THE EXACT LOCATION, SIZE, MATERIAL AND ELEVATION OF ALL EXISTING UTILITIES PRIOR TO COMMENCING CONSTRUCTION. PROTECT AND ASSUME RESPONSIBILITY FOR ALL EXISTING UTILITIES WHETHER OR NOT SHOWN ON THIS DRAWING.
- OBTAIN ALL NECESSARY PERMITS AND APPROVALS FROM THE CITY OF OTTAWA BEFORE COMMENCING CONSTRUCTION.
- BEFORE COMMENCING CONSTRUCTION OBTAIN AND PROVIDE PROOF OF COMPREHENSIVE, ALL RISK AND OPERATIONAL LIABILITY INSURANCE FOR \$5,000,000.00. INSURANCE POLICY TO NAME OWNERS, ENGINEERS AND ARCHITECTS AS CO-INSURED.
- RESTORE ALL DISTURBED AREAS ON-SITE AND OFF-SITE, INCLUDING TRENCHES AND SURFACES ON PUBLIC ROAD ALLOWANCES TO EXISTING CONDITIONS OR BETTER TO THE SATISFACTION OF MUNICIPAL AUTHORITIES AND OWNER.
- REMOVE FROM SITE ALL EXCESS EXCAVATED MATERIAL, ORGANIC MATERIAL AND DEBRIS UNLESS OTHERWISE INSTRUCTED BY ENGINEER. EXCAVATE AND REMOVE FROM SITE ANY CONTAMINATED MATERIAL. ALL CONTAMINATED MATERIAL SHALL BE DISPOSED OF AT A LICENSED LANDFILL FACILITY.
- ALL ELEVATIONS ARE GEODETIC.
- REFER TO GEOTECHNICAL INVESTIGATION REPORT (Ref No. PG5091-1, REVISION 1, DATED NOVEMBER 6, 2019, AND TREE PLANTING SETBACK RECOMMENDATIONS (Ref No. PS5091-MEMO-01), PREPARED BY PATERSON GROUP INC. FOR SUBSURFACE CONDITIONS, CONSTRUCTION RECOMMENDATIONS AND GEOTECHNICAL INSPECTION REQUIREMENTS. THE GEOTECHNICAL CONSULTANT IS TO REVIEW ON-SITE CONDITIONS AFTER EXCAVATION PRIOR TO PLACEMENT OF THE GRANULAR MATERIAL.
- REFER TO ARCHITECTS' AND LANDSCAPE ARCHITECTS' DRAWINGS FOR BUILDING AND HARD SURFACED AREAS AND DIMENSIONS.
- REFER TO THE 'DEVELOPMENT SERVICING STUDY AND STORMWATER MANAGEMENT REPORT' (R-2023-086) PREPARED BY NOVATECH.
- SAW CUT AND KEYGRIND ASPHALT AT ALL ROAD CUTS AND ASPHALT TIE-IN POINTS AS PER CITY OF OTTAWA STANDARDS (R10). PROVIDE LINE PARKING PAINTING.
- CONTRACTOR TO PROVIDE THE CONSULTANT WITH A GENERAL PLAN OF SERVICES INDICATING ALL SERVICES AS-BUILT INFORMATION SHOWN ON THIS PLAN. AS-BUILT INFORMATION MUST INCLUDE: PIPE MATERIAL, SIZES, LENGTHS, SLOPES, INVERT AND T&G ELEVATIONS, STRUCTURE LOCATIONS, VALVE AND HYDRANT LOCATIONS, T&M ELEVATIONS AND ANY ALIGNMENT CHANGES, ETC.

GRADING NOTES:

- ALL TOPSOIL, ORGANIC OR DELETERIOUS MATERIAL MUST BE ENTIRELY REMOVED FROM BENEATH THE PROPOSED PAVED AREAS AS DIRECTED BY THE SITE ENGINEER OR GEOTECHNICAL ENGINEER.
- EXPOSED SUBGRADES IN PROPOSED PAVED AREAS SHOULD BE PROOF ROLLED WITH A LARGE STEEL DRUM ROLLER AND INSPECTED BY THE GEOTECHNICAL ENGINEER PRIOR TO THE PLACEMENT OF GRANULARS.
- ANY SOFT AREAS EVIDENT FROM THE PROOF ROLLING SHOULD BE SUB-EXCAVATED AND REPLACED WITH SUITABLE MATERIAL THAT IS FROST COMPATIBLE WITH THE EXISTING SOILS AS RECOMMENDED BY THE GEOTECHNICAL ENGINEER.
- THE GRANULAR BASE SHOULD BE COMPACTED TO AT LEAST 95% OF THE STANDARD PROCTOR MAXIMUM DRY DENSITY VALUE. ANY ADDITIONAL GRANULAR FILL USED BELOW THE PROPOSED PAVEMENT SHOULD BE COMPACTED TO AT LEAST 95% OF THE STANDARD PROCTOR MAXIMUM DRY DENSITY VALUE.
- MINIMUM OF 2% GRADE FOR ALL GRASS AREAS UNLESS OTHERWISE NOTED.
- MAXIMUM TERRACING GRADE TO BE 3:1 UNLESS OTHERWISE NOTED.
- ALL GRADES BY CURBS ARE EDGE OF PAVEMENT GRADES UNLESS OTHERWISE INDICATED.
- ALL CURBS SHALL BE BARRIER CURB (150mm) UNLESS OTHERWISE NOTED AND CONSTRUCTED AS PER CITY OF OTTAWA STANDARDS (SC1.1).
- REFER TO LANDSCAPE PLAN FOR PLANTING AND OTHER LANDSCAPE FEATURE DETAILS.
- CONTRACTOR TO PROVIDE THE CONSULTANT WITH A GRADING PLAN INDICATING THE AS-BUILT ELEVATIONS OF ALL DESIGN GRASSES SHOWN ON THIS PLAN.

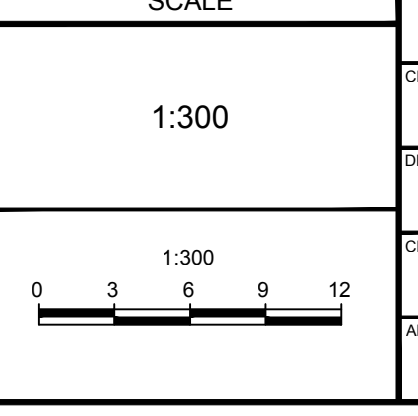
Erosion and Sediment Control Responsibilities:

ESC Measure	Symbol	Specification	Installation Responsibility	During Construction		After Construction Prior to Final Acceptance		After Final Acceptance	
				Inspection Responsibility	Maintenance Responsibility	Approval to Remove	Removal Responsibility	Inspection/Maintenance Responsibility	Inspection/Maintenance Responsibility
Silt Fence	---	OPSD 219.110	Developer's Contractor	Developer's Contractor	Weekly (as a minimum)	Consultant	Developer's Contractor	N/A	N/A
Filter Fabric	[Symbol]	Location as Indicated On Plans	Developer's Contractor	Developer's Contractor	Weekly (as a minimum)	Consultant	Developer's Contractor	N/A	N/A
Mud Mat	[Symbol]	Drawing Details	Developer's Contractor	Developer's Contractor	Weekly (as a minimum)	Developer's Contractor	Developer's Contractor	N/A	N/A
Dust Control	[Symbol]	Location as Required Around Site	Developer's Contractor	Developer's Contractor	Weekly (as a minimum)	Consultant	Developer's Contractor	N/A	N/A
Stabilized Material Stockpiling	[Symbol]	Location as Required by Contractor	Developer's Contractor	Developer's Contractor	Weekly (as a minimum)	Developer's Contractor	Developer's Contractor	N/A	N/A
Sediment Basin (for flows being pumped out of excavations)	[Symbol]	Location as Required by Contractor	Developer's Contractor	Developer's Contractor	After Every Rainstorm	Developer's Contractor	Developer's Contractor	N/A	N/A

NOTE: THE POSITION OF ALL POLE LINES, CONDUITS, WATERMANS, SEWERS AND OTHER UNDERGROUND AND OVERGROUND UTILITIES AND STRUCTURES IS NOT NECESSARILY SHOWN ON THE CONTRACT DRAWINGS, AND WHERE SHOWN, THE ACCURACY OF THE POSITION OF SUCH UTILITIES AND STRUCTURES IS NOT GUARANTEED. BEFORE STARTING WORK, DETERMINE THE EXACT LOCATION OF ALL SUCH UTILITIES AND STRUCTURES AND ASSUME ALL LIABILITY FOR DAMAGE TO THEM.

OWNER INFORMATION
 8417709 CANADA INC.
 430 boulevard de l'hôpital, Suite 310
 Gatineau, QC J8V 1T7
 NAME: PAUL-ANDRÉ CHARBONNEAU
 PHONE: (819) 955-8032
 EMAIL: paul-andre@chartro.ca

No.	REVISION	DATE	BY
2.	REVISED PER CITY COMMENTS	DEC 23/24	FST
1.	ISSUED FOR SPC APPLICATION	JUL 19/24	FST



FOR REVIEW ONLY

DESIGN: CV
 CHECKED: FST
 DRAWN: CV
 CHECKED: FST
 APPROVED: FST

PROFESSIONAL ENGINEER
 F.S. THAUETTE
 1000-1525
 DEC 23, 2024
 PROVINCE OF ONTARIO

NOVATECH
 Engineers, Planners & Landscape Architects
 Suite 200, 240 Michael Cowpland Drive
 Ottawa, Ontario, Canada K2M 1P6
 Telephone: (613) 254-9643
 Facsimile: (613) 254-5867
 Website: www.novatech-eng.com

LOCATION
 CITY OF OTTAWA
 3459 & 3479 ST. JOSEPH BOULEVARD

DRAWING NAME
GRADING AND EROSION & SEDIMENT CONTROL PLAN

PROJECT No: 113020-00
 REV # 2
 DRAWING No: 113020-GR2
 PLAN No: 13167