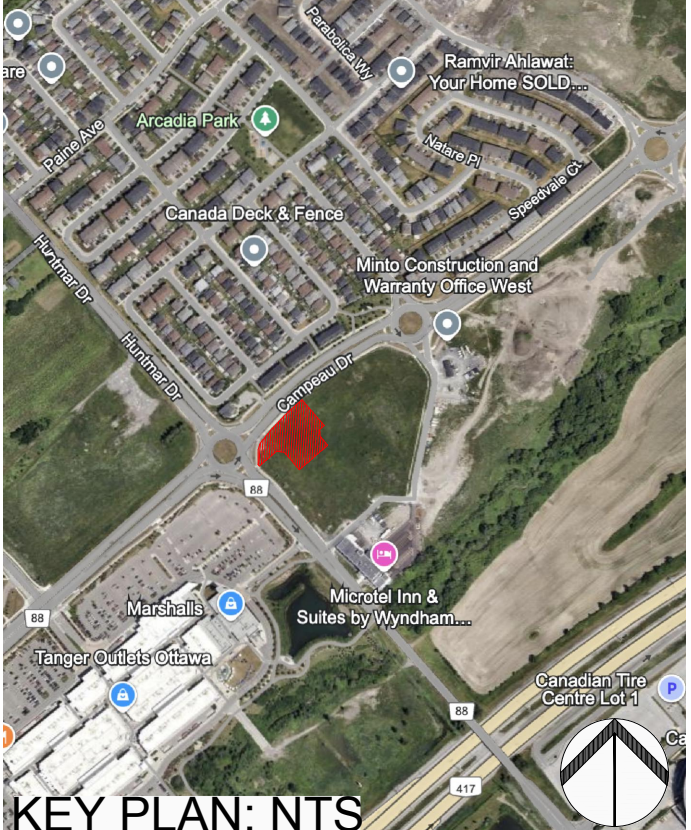


PROPOSED PLANT LIST					
KEY	QTY	BOTANICAL NAME	COMMON NAME	SIZE	CONDITION
TREES					
CS	1	Picea pungens	Colorado Spruce	2.0m ht.	B&B
FM	1	Acer x freemanii	Freeman's Maple	50mm CAL.	B&B
GB	3	Ginkgo biloba	Maidenhair Tree	50mm CAL.	B&B
HB*	2	Celtis occidentalis	Common Hackberry	50mm CAL.	B&B
HL	4	Gleditsia triacanthos	Honey Locust	50mm CAL.	B&B
RO*	1	Quercus rubra	Red Oak	50mm CAL.	B&B
SB*	7	Amelanchier canadensis	Shadblow Serviceberry	50mm CAL.	B&B
SF*	2	Amelanchier laevis 'JFS-ARB'	Spring Flurry Serviceberry	50mm CAL.	B&B
SM*	1	Acer saccharum	Sugar Maple	50mm CAL.	B&B
WB*	1	Betula papyrifera 'Multi-Stem'	Multi-stem Paper Birch	50mm CAL.	B&B
SHRUBS					
Ah	12	Hydrangea arborescens 'Annabelle'	Annabelle Hydrangea	1 gal. pot	Potted
Cj*	14	Juniperus horizontalis	Creeping Juniper	600mm spr.	Potted
Fg	28	Rhus aromatica 'Gro-Low'	Low Gro Fragrant Sumac	600mm ht.	Potted
Mp	2	Pinus mugo var. Pumilio	Dwarf Mugo Pine	600mm spr.	Potted
Rr	17	Rosa rugosa	Rugosa Rose	800mm ht.	Potted
Ss	36	Sorbaria sorbifolia 'Sem'	Sem False Spirea	600mm ht.	Potted
ORNAMENTAL GRASSES					
kf	27	Calamagrostis acutiflora 'Karl Foerster'	Karl Foerster Grass	250mm pot	Potted
ms*	18	Panicum virgatum	Switch Grass	250mm pot	Potted

PLANT NOTES:					
1. * DENOTES NATIVE SPECIES					
2. ALL TREES ARE TO BE PLANTED ON PRIVATE PROPERTY WITH THE EXCEPTION OF TWO SPRING FLURRY SERVICEBERRIES AND TWO SHADBLOW SERVICEBERRIES IN THE CAMPEAU DRIVE R.O.W.					

- GENERAL NOTES:**
- IT IS THE RESPONSIBILITY OF THE APPROPRIATE CONTRACTOR OR OFFICIAL TO REPORT ANY ERRORS, OMISSIONS OR DISCREPANCIES ON THIS PLAN WITH ACTUAL SITE CONDITIONS TO THE LANDSCAPE ARCHITECT BEFORE PROCEEDING WITH CONSTRUCTION.
  - THE CONTRACTOR IS TO NOTIFY ALL UTILITY COMPANIES AND AUTHORITIES PRIOR TO ANY EXCAVATION AND ASCERTAIN LOCATIONS OF UNDERGROUND SERVICES.
  - THE CONTRACTOR IS TO REINSTATE ALL AREAS AND ITEMS DAMAGED AS A RESULT OF CONSTRUCTION ACTIVITY.
  - THE CONTRACTOR IS TO COMPLY WITH ALL PERTINENT CODES AND BY-LAWS.
  - THE CONTRACTOR IS TO MAINTAIN A POSITIVE SURFACE RUN-OFF THROUGHOUT THE ENTIRE CONSTRUCTION PERIOD.
  - THE LANDSCAPE ARCHITECT IS NOT RESPONSIBLE FOR SUBSURFACE CONDITIONS.
  - THE CONTRACTOR IS TO IDENTIFY ALL EXISTING TREES TO REMAIN ON SITE WITH THE LANDSCAPE ARCHITECT PRIOR TO CONSTRUCTION.
  - THE CONTRACTOR IS TO STAKE THE PROPOSED LOCATION OF ALL PLANT MATERIAL IN CONJUNCTION WITH THE LANDSCAPE ARCHITECT PRIOR TO EXCAVATION.
  - MINIMUM DISTANCES FOR SELECTED DECIDUOUS TREES ARE AS FOLLOWS:
    - 9.1. BUILDING FOUNDATIONS - 7.5M
    - 9.2. SIDEWALKS - 1.5M
    - 9.3. PUBLIC STREETS - 2.5M
    - 9.4. UNDERGROUND INFRASTRUCTURE - 2.0M
  - ALL TREES WITHIN 1M OF UNDERGROUND UTILITY TRENCHES ARE TO BE EXCAVATED BY HAND.
  - REMOVE ALL PROTECTIVE WRAPPING FROM TREE TRUNKS AFTER INSTALLATION.
  - STAKING OF TREES SHALL ONLY BE PERFORMED IF NECESSARY.
  - ENSURE THAT MULCH IS PULLED BACK A MINIMUM DISTANCE OF 75MM FROM BASE OF TREE TRUNK.
  - TREE SOIL VOLUMES ARE TO BE AS FOLLOWS BASED ON A 1.5m SOIL DEPTH
    - 30m<sup>3</sup> FOR A LARGE DECIDUOUS TREE
    - 25m<sup>3</sup> FOR EVERGREEN AND MEDIUM DECIDUOUS TREES
    - 20m<sup>3</sup> FOR SMALL DECIDUOUS TREES



PLAN OF SURVEY OF  
PART OF BLOCK 1  
REGISTERED PLAN 4M-1563  
(GEOGRAPHIC TOWNSHIP OF MARCH )  
CITY OF OTTAWA

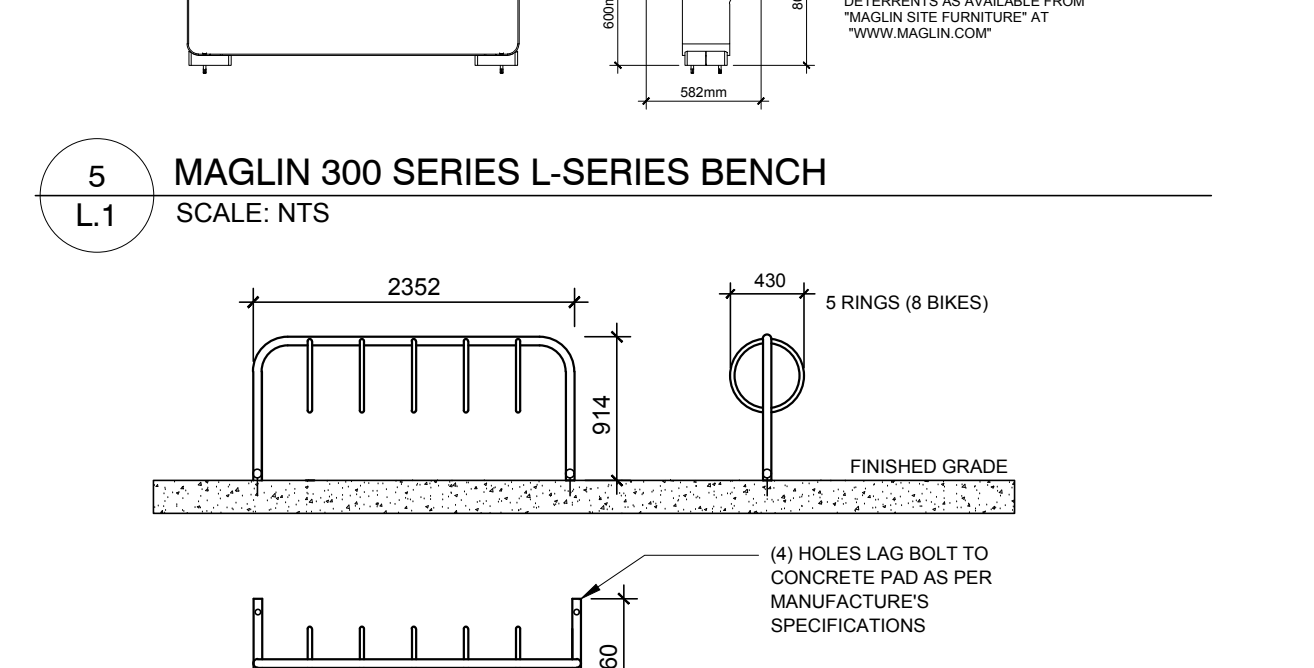
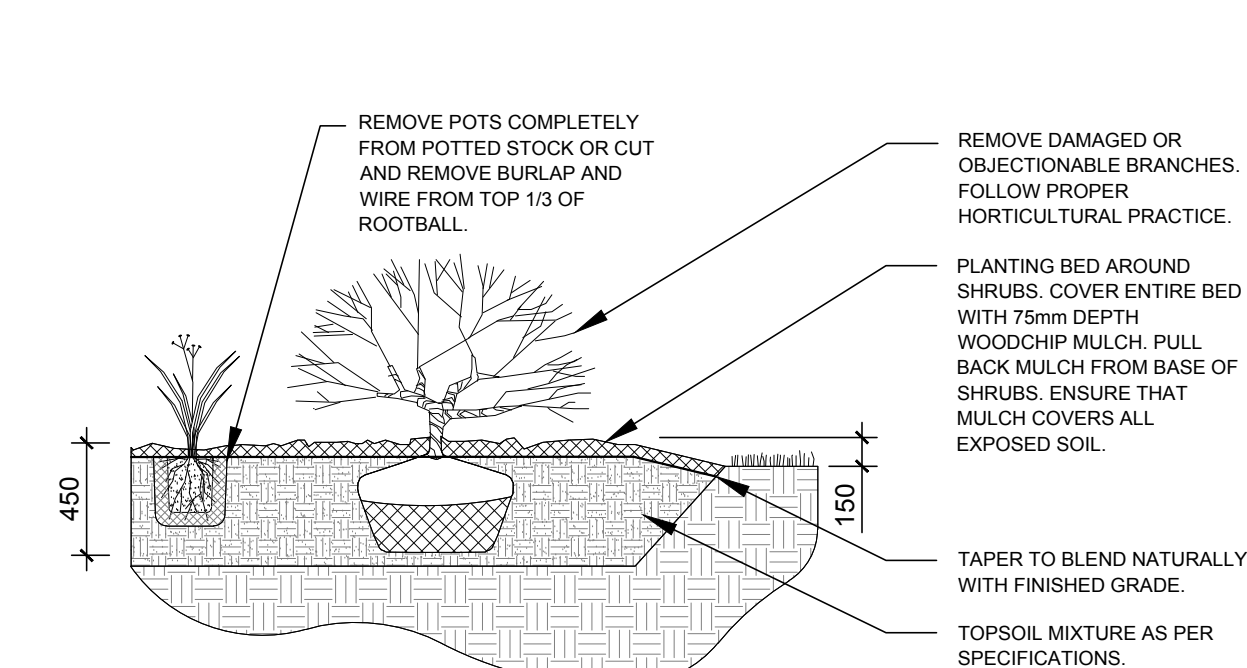
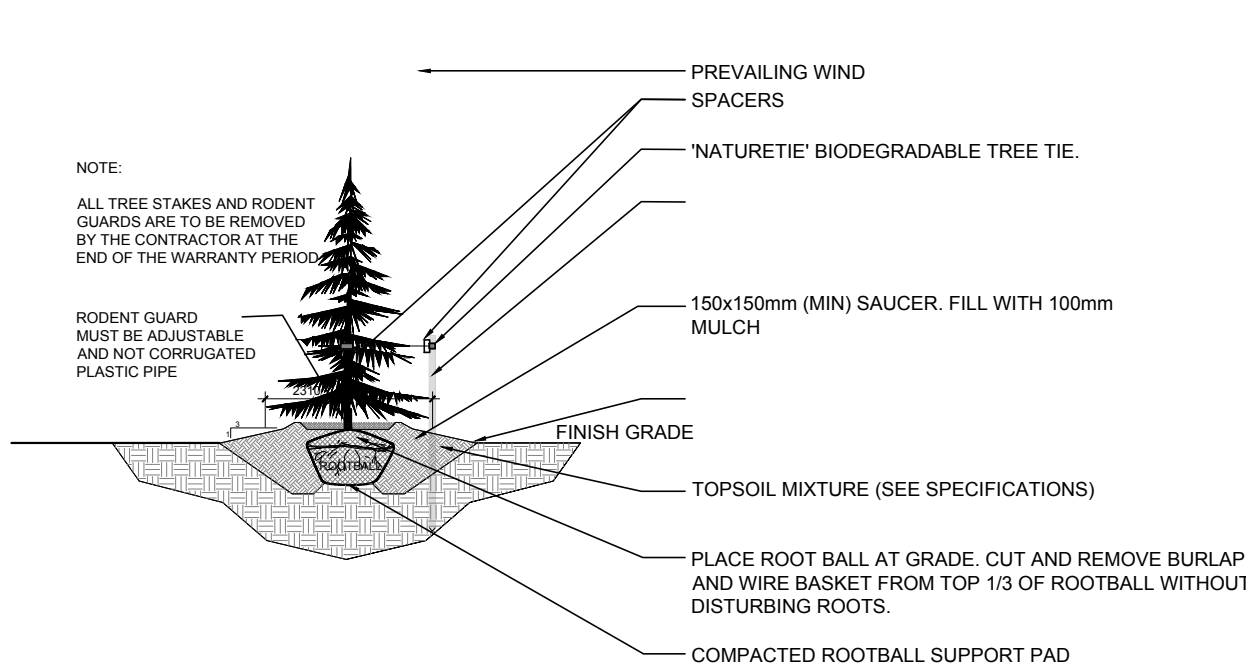
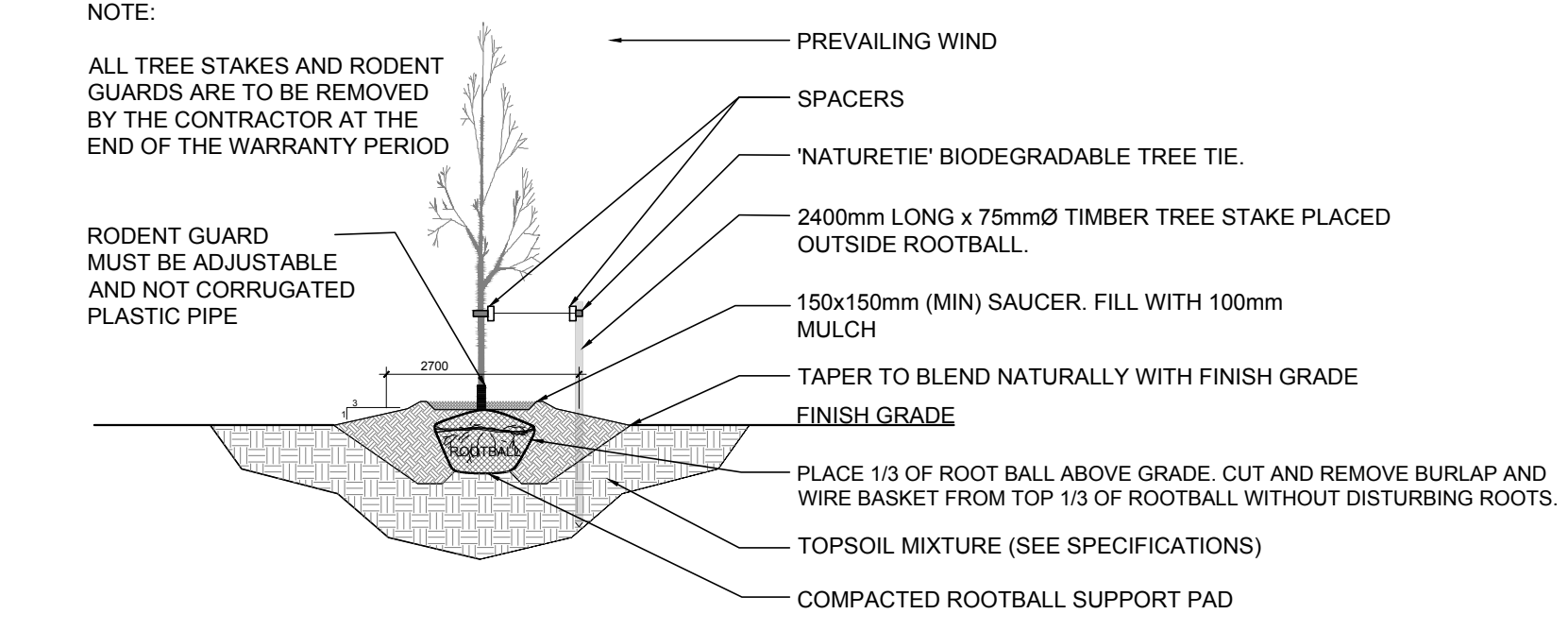
**40 YEAR CANOPY CALCULATION:**

-6971 m<sup>2</sup> site area

-8 large trees proposed (154m<sup>2</sup> ea.), 5 medium trees proposed (79m<sup>2</sup> ea.), 1 large coniferous tree proposed (79m<sup>2</sup> ea.) and 9 small trees proposed (7m<sup>2</sup> ea.)

=1,769m<sup>2</sup> canopy cover = 25.4% canopy cover

\*Large deciduous tree calculated at 14m spread, medium deciduous trees at 10m spread, small deciduous trees at 3m spread, large coniferous trees at 10m spread



**2**  
L.1  
DECIDUOUS TREE PLANTING  
SCALE: NTS

**3**  
L.1  
CONIFEROUS TREE PLANTING  
SCALE: NTS

**4**  
L.1  
SHRUB / ORNAMENTAL GRASS / PERENNIAL PLANTING  
SCALE: NTS

**6**  
L.1  
MAZEWELD 5 RING BIKE RACK  
SCALE: NTS

CLIENT

**MINTO COMMUNITIES**  
200 180 KENT STREET, OTTAWA, ON, K1P 0B6  
T: 613 - 404 - 4235

CONSULTANTS  
ARCHITECTS

**DCA**  
A GROUP OF ARCHITECTS

CIVIL ENGINEERS

**ARCADIS**

LEGEND

PROPOSED DECIDUOUS TREE  
20, 25, or 30m<sup>3</sup> SOIL VOLUME (SEE GENERAL NOTES)

PROPOSED CONIFEROUS TREE  
25m<sup>3</sup> SOIL VOLUME (SEE GENERAL NOTES)

PROPOSED SHRUBS AND GRASSES

PROPOSED WOOD CHIP MULCH

PROPOSED SOD

GRASS ON CITY PROPERTY

PROPOSED CONCRETE WALKWAY

PROPOSED PEASTONE

PROPOSED MAGLIN 300 SERIES L-SERIES BACKED BENCH WITH IPE WOOD, END AND CENTRE ARMS AND SKATEBOARD DETERRENTS AS AVAILABLE FROM "MAGLIN SITE FURNITURE" AT "WWW.MAGLIN.COM"

PROPOSED 5 RING BIKE RACK

PROPERTY LINE

4	REVISED PER CITY COMMENTS	01/24/2025	ML	JL
3	ISSUED FOR SITE PLAN APPROVAL	11/08/2024	CM	JL
2	ISSUED FOR DISCUSSION AND REVIEW	08/30/2024	CM	JL
1	ISSUED FOR DISCUSSION AND REVIEW	06/26/2024	CM	JL
No.	Issue	Date	AMDD/YY	DR CK

**JAMES B. LENNOX & ASSOCIATES INC.**  
**LANDSCAPE ARCHITECTS**  
3332 CARLING AVE. OTTAWA, ONTARIO K2H 5A8  
Tel. (613) 722-5168 Fax. (866) 343-3942

PROJECT

MINTO DESIGN CENTER

8555 CAMPEAU DR, KANATA ONTARIO

DRAWING

LANDSCAPE PLAN

STAMP

ASSOCIATION OF LANDSCAPE ARCHITECTS  
MEMBER

SCALE

AS SHOWN

START DATE

JUNE, 2024

PROJECT NO.

24MIS2436

PROJECT NORTH

DRAWING NO.

**L.1**

PLOT SIZE ARCH-D