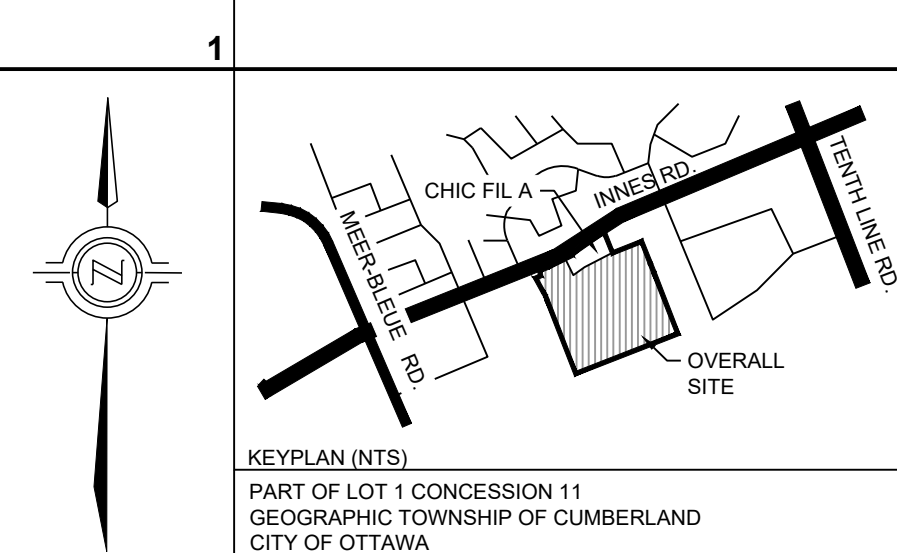


E:\BRM\BRM-230202042-H0160 Execution\65 Drawings\230202042-H0-PS100-RA.dwg  
 15 January 2025  
 XREF-CFA-TBLK.dwg - PS101

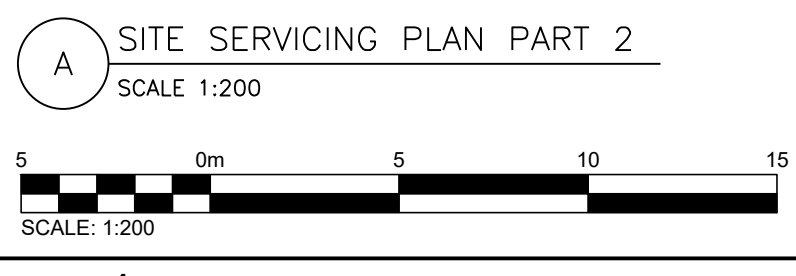


**GENERAL NOTES:**

1. SURVEY INFORMATION PROVIDED BY J.D BARNES DATED 2023-06-12 GRID BEARINGS ARE UTM GRID, DERIVED FROM REAL TIME NETWORK (RTN) OBSERVATIONS, VIM LONE 18, NAD83 (CSRS) (2010.0). DISTANCES ARE GROUND AND CAN BE CONVERTED TO GRID BY MULTIPLYING BY THE COMBINED SCALE FACTOR OF 0.999910. FOR BEARING COMPARISONS, A ROTATION OF 1°04'07" CLOCKWISE WAS APPLIED TO BEARINGS ON PLAN P1, P2 AND P3 TO ROTATE TO NAD83 UTM 18.
2. GENERAL CONTRACTOR IS RESPONSIBLE FOR ALL LOCATES PRIOR TO COMMENCEMENT OF CONSTRUCTION/DEMOLITION.
3. ALL WORK TO BE DONE BY THE GENERAL CONTRACTOR UNLESS NOTED OTHERWISE - WITHIN PROPERTY/LEASE LINES.
4. GEOTECHNICAL INVESTIGATION PROPOSED CHICK-FIL-A RESTAURANT #30042 BY BLUE FROG DATED AUGUST 22, 2024

**LEGEND:**

- EX. LIGHT POLE
- EX. YARD LIGHT
- EX. JUNCTION BOX
- PROP. BACKFLOW PREVENTER
- PROP. WATER METER
- EX. WATER METER
- EX. HYDRO POLE
- EX. GUY WIRE AND ANCHOR
- EX. TRAFFIC SIGNAL
- EX. GAS VALVE
- EX. SIGN
- EX. MONITORING WELL
- EX. IRON PIN
- EX. FOUND LEAD PIN
- FOUND IRON BAR
- EX. FIRE HYDRANT
- EX. STORM MH
- NEW STORM MH
- EX. SANITARY MH
- NEW SANITARY MH
- EX. STORM CB
- NEW STORM CB
- NEW STORM CBMH
- EX. WATER VALVE
- EX. HYDRO POLE
- EX. GUY WIRE AND ANCHOR
- DOOR
- PROPERTY LINE
- - - EX. FENCE LINE
- EX. CONC. CURB
- NEW CONC. CURB
- CONC. CURB REMOVAL
- NEW CURB CUT
- PROPOSED SWALE
- PROPOSED SUBDRAIN
- MATCH TO EXISTING
- MAX 3:1 SLOPING
- SCOPE OF WORK BOUNDARY
- EX. NAT. GAS LINE
- EX. WATER LINE
- EX. SANITARY LINE
- EX. STORM LINE
- EX. BURIED PHONE LINE
- EX. BURIED HYDRO LINE
- NEW WATER LINE
- NEW SANITARY LINE
- NEW STORM LINE
- G — NEW NAT. GAS LINE
- UH — NEW BURIED HYDRO LINE
- EX. STORM LINE REMOVAL
- VENT PIPING
- V&B PROP. WATER VALVE
- PIPE INSULATION



**Chick-fil-A**  
 5200 Buffington Road  
 Atlanta, Georgia 30349-2998

exp Services Inc.  
 1595 Clark Boulevard  
 Brampton, ON L6T 4V1  
 Canada  
 www.exp.com



- BUILDINGS • EARTH & ENVIRONMENT • ENERGY •
- INDUSTRIAL • INFRASTRUCTURE • SUSTAINABILITY

**CHICK-FIL-A**  
**ORLEANS**  
 4270 Innes Road  
 Ottawa, ON

**FSR#30042**

BUILDING TYPE / SIZE: IP01 SE  
 RELEASE: XXXXXXXXX

**REVISION SCHEDULE**

NO.	DATE	DESCRIPTION
A	2024-10-04	FOR SPA
B	2024-01-15	FOR SPA

**CONSULTANT PROJECT #** BRM0023002042-H0  
**PROJECT STATUS** SPA  
**DATE** OCTOBER 2024  
**DRAWN BY** K.J.

Information contained on this drawing and in all digital files produced for above named project may not be reproduced in any manner without express written or verbal consent from authorized project representatives.

**SHEET**  
 SITE SERVICING PLAN  
 PART 2

**SHEET NUMBER**  
**PS101**

Issued for SPA