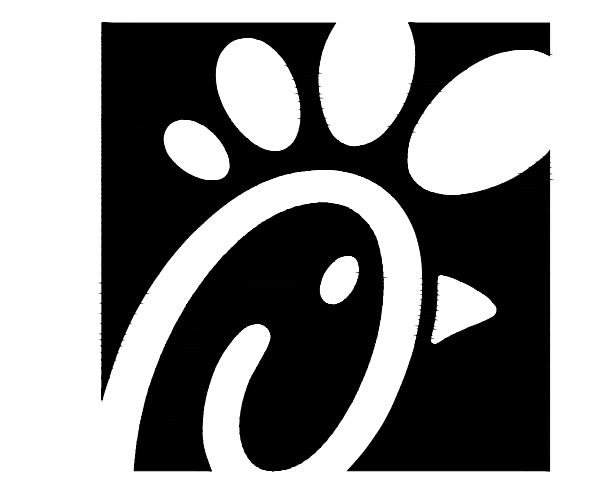
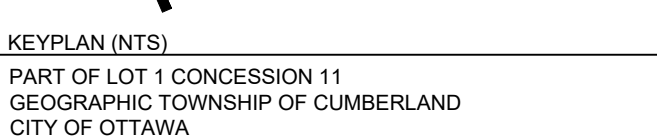
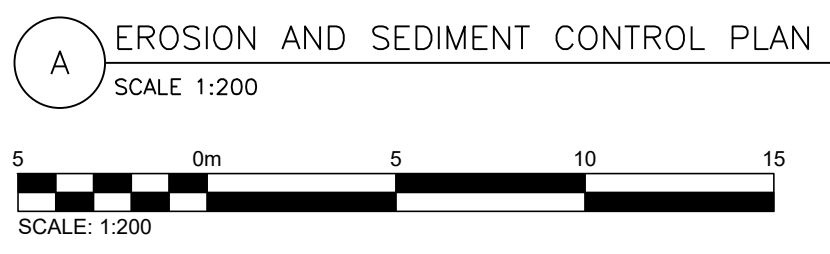


GENERAL NOTES:

1. SURVEY INFORMATION PROVIDED BY J.D BARNES DATED 2023-06-12 GRID BEARINGS ARE UTM GRID, DERIVED FROM REAL TIME NETWORK (RTN) OBSERVATIONS, W/M LONE 18, NAD85 (CSRS) (2010). DISTANCES ARE GROUND AND CAN BE CONVERTED TO GRID BY MULTIPLYING BY THE COMBINED SCALE FACTOR OF 0.999610. FOR BEARING COMPARISONS, A ROTATION OF 104°07' CLOCKWISE WAS APPLIED TO BEARINGS ON PLAN P1, P2 AND P3 TO ROTATE TO NAD83 UTM 18.
2. GENERAL CONTRACTOR IS RESPONSIBLE FOR ALL LOCATES PRIOR TO COMMENCEMENT OF CONSTRUCTION/DEMOLITION.
3. ALL WORK TO BE DONE BY THE GENERAL CONTRACTOR UNLESS NOTED OTHERWISE -- WITHIN PROPERTY/LEASE LINES.

LEGEND:

- EX. LIGHT POLE
- EX. YARD LIGHT
- EX. JUNCTION BOX
- PROP. BACKFLOW PREVENTER
- PROP. WATER METER
- EX. WATER METER
- EX. HYDRO POLE
- EX. GUY WIRE AND ANCHOR
- EX. TRAFFIC SIGNAL
- EX. GAS VALVE
- EX. SIGN
- EX. MONITORING WELL
- EX. IRON PIN
- EX. FOUND LEAD PIN
- FOUND IRON BAR
- EX. FIRE HYDRANT
- EX. STORM MH
- NEW STORM MH
- EX. SANITARY MH
- NEW SANITARY MH
- EX. STORM CB
- NEW STORM CB
- NEW STORM CBMH
- EX. WATER VALVE
- EX. HYDRO POLE
- EX. GUY WIRE AND ANCHOR
- DOOR
- EX. CONTROL MONUMENT
- PROPERTY LINE
- - - EX. FENCE LINE
- EX. CONC. CURB
- NEW CONC. CURB
- CONC. CURB REMOVAL
- × XXX.XX EX. ELEVATION
- × (XXX.XX) MATCH EX. ELEVATION
- + XXX.XX PROP. ELEVATION
- + TCXXX.XX PROP. TOP OF CURB ELEVATION
- + BCXXX.XX PROP. BOTTOM OF CURB ELEVATION
- 2.0% PROP. SLOPE
- 2.0% EX. SLOPE
- ↑ EX. OVERLAND FLOW
- ← PROPOSED OVERLAND FLOW
- EX. CONC. CURB
- NEW CONC. CURB
- NEW CURB CUT
- PROPOSED SWALE
- PROPOSED SUBDRAIN
- MATCH TO EXISTING
- MAX 3:1 SLOPING
- ### CATCHMENT I.D.
- ### AREA (ha) | RUN-OFF COEFFICIENT
- DRAINAGE AREA BOUNDARY
- SF SILT FENCE
- SILT SACK
- MUD MAT



Chick-fil-A

Chick-fil-A
 5200 Buffington Road
 Atlanta, Georgia 30349-2998

exp Services Inc.
 T: +1.905.793.9800 | F: +1.905.793.0641
 1595 Clark Boulevard
 Brampton, ON L6T 4V1
 Canada

www.exp.com



- BUILDINGS • EARTH & ENVIRONMENT • ENERGY •
- INDUSTRIAL • INFRASTRUCTURE • SUSTAINABILITY

CHICK-FIL-A
ORLEANS
 4270 Innes Road
 Ottawa, ON

FSR#30042

BUILDING TYPE / SIZE: IP01 SE
 RELEASE: XXXXXXXX

REVISION SCHEDULE

NO.	DATE	DESCRIPTION
A	2024-10-04	FOR SPA
B	2025-01-15	FOR SPA

CONSULTANT PROJECT # BRM0023002042-H0
PROJECT STATUS SPA
DATE OCTOBER 2024
DRAWN BY K.J.

Information contained on this drawing and in all digital files produced for above named project may not be reproduced in any manner without express written or verbal consent from authorized project representatives.

SHEET
 EROSION AND SEDIMENT CONTROL PLAN

SHEET NUMBER
 CS200

Issued for SPA