



STAMP

5 2024-12-23 ISSUED FOR SPCA  
4 2024-12-20 ISSUED FOR BUILDING PERMIT  
REV DATE ISSUE

NOTES

1. OWNERSHIP OF THE COPYRIGHT OF THE DESIGN AND THE WORKS EXECUTED FROM THE DESIGN REMAINS WITH CSV ARCHITECTS, AND MAY NOT BE REPRODUCED IN ANY FORM WITHOUT THE WRITTEN CONSENT OF CSV ARCHITECTS.

2. THE DRAWINGS, PRESENTATIONS AND SPECIFICATIONS AS INSTRUMENTS OF SERVICE ARE AND SHALL REMAIN THE PROPERTY OF CSV ARCHITECTS. THEY ARE NOT TO BE USED BY THE CLIENT ON OTHER PROJECTS OR ON EXTENSIONS TO THIS PROJECT WITHOUT THE WRITTEN CONSENT OF CSV ARCHITECTS.

3. THIS DRAWING IS TO BE READ IN CONJUNCTION WITH ALL OTHER PROJECT DRAWINGS AND SPECIFICATIONS.

4. DO NOT SCALE DRAWINGS. CONTRACTOR SHALL BE RESPONSIBLE TO VERIFY DIMENSIONS ON SITE.

5. ALL WORK SHALL BE IN ACCORDANCE WITH THE ONTARIO BUILDING CODE AND ALL SUPPLEMENTS AND APPLICABLE MUNICIPAL REGULATIONS.

CLIENT

**OTTAWA COMMUNITY HOUSING**  
OTTAWA  
ONTARIO, CANADA

PROJECT

**OCH SOMERSET ST. E**214 SOMERSET ST. E, OTTAWA,  
ON.

TITLE

**EXTERIOR ELEVATION NORTH**PROJECT NO: 2022 - 2470  
DRAWN: HL  
APPROVED: AL,JS  
SCALE: 1 : 50  
DATE PRINTED: 12/23/2024 2:16:59 PM

REV

DRAWING NO.

5

A301

**ELEVATION NOTES:**

CONTRACTOR TO COORDINATE WITH MANUFACTURER'S SPECIFICATIONS AND INSTALLATIONS GUIDELINES FOR ALL MATERIAL SEALING, TRANSITIONS, SEPARATIONS, FLASHING, DETAILS, CONNECTIONS, ANCHORAGES, ETC. CONTRACTOR TO PROVIDE DETAIL DRAWINGS OR MOCK-UP FOR ARCHITECT'S REVIEW AND APPROVAL FOR ALL SPECIAL CONDITIONS NOT SHOWN IN THE CONTRACT DOCUMENTS.

**ELEVATION KEYNOTES:**

- 1 LIGHT WELL
- 2 MECHANICAL LOUVRE
- 3 1070 HIGH GUARDRAIL
- 4 SHADE STRUCTURE
- 5 PREFINISHED METAL CAP FLASHING
- 6 ROOFTOP UNIT
- 7 EXISTING RETAINING WALL TO REMAIN
- 8 ENTRANCE CANOPY
- 9 NEW RETAINING WALL
- 10 FENCING
- 11 CURTAIN WALL
- 12 ROOF OVERFLOW SCUPPER
- 13 PARAPET CAP C/W NON-CORROSIVE PRE-FINISHED METAL FLASHING (PAINTED)
- 14 COLUMN PER STRUCTURAL (PAINTED)
- 15 GALVANIZED STEEL BIKE RACKS SURFACE MOUNTED

**ELEVATION LEGEND:**

HATCH PATTERNS SHOWN ARE FOR GRAPHIC PURPOSES ONLY AND SHOULD BE COORDINATED WITH ACTUAL SPECIFIED MATERIALS.

HATCH	SYMBOL	DESCRIPTION
	C1.1	FIBERCEMENT CLADDING MANUFACTURER: CEMFORT COLOUR: TBD
	C1.2	FIBERCEMENT CLADDING MANUFACTURER: CEMFORT COLOUR: TBD
	C1.3	FIBERCEMENT CLADDING MANUFACTURER: CEMFORT COLOUR: TBD
	CP	FOUNDATION WALL FINISH TBD
		REQUIRED HYDRO CLEARANCE



1 NORTH ELEVATION

A301 1:50



STAMP

5 2024-12-23 ISSUED FOR SPCA  
4 2024-12-20 ISSUED FOR BUILDING PERMIT  
REV DATE ISSUE

## NOTES

- OWNERSHIP OF THE COPYRIGHT OF THE DESIGN AND THE WORKS EXECUTED FROM THE DESIGN REMAINS WITH CSV ARCHITECTS, AND MAY NOT BE REPRODUCED IN ANY FORM WITHOUT THE WRITTEN CONSENT OF CSV ARCHITECTS.
- THE DRAWINGS, PRESENTATIONS AND SPECIFICATIONS AS INSTRUMENTS OF SERVICE ARE AND SHALL REMAIN THE PROPERTY OF CSV ARCHITECTS. THEY ARE NOT TO BE USED BY THE CLIENT ON OTHER PROJECTS OR ON EXTENSIONS TO THIS PROJECT WITHOUT THE WRITTEN CONSENT OF CSV ARCHITECTS.
- THIS DRAWING IS TO BE READ IN CONJUNCTION WITH ALL OTHER PROJECT DRAWINGS AND SPECIFICATIONS.
- DO NOT SCALE DRAWINGS. CONTRACTOR SHALL BE RESPONSIBLE TO VERIFY DIMENSIONS ON SITE.
- ALL WORK SHALL BE IN ACCORDANCE WITH THE ONTARIO BUILDING CODE AND ALL SUPPLEMENTS AND APPLICABLE MUNICIPAL REGULATIONS.

CLIENT

OTTAWA COMMUNITY  
HOUSING  
OTTAWA  
ONTARIO, CANADA

PROJECT

OCH SOMERSET ST. E

214 SOMERSET ST. E, OTTAWA,  
ON.

TITLE

EXTERIOR ELEVATION  
EASTPROJECT NO: 2022 - 2470  
DRAWN: HL  
APPROVED: AL,JS  
SCALE: 1 : 50  
DATE PRINTED: 12/23/2024 2:17:07 PM

REV

DRAWING NO.

5

A302

## ELEVATION NOTES:

CONTRACTOR TO COORDINATE WITH MANUFACTURER'S SPECIFICATIONS AND INSTALLATIONS GUIDELINES FOR ALL MATERIAL SEALING, TRANSITIONS, SEPARATIONS, FLASHING DETAILS, CONNECTIONS, ANCHORAGES, ETC. CONTRACTOR TO PROVIDE DETAIL DRAWINGS OR MOCK-UP FOR ARCHITECT'S REVIEW AND APPROVAL FOR ALL SPECIAL CONDITIONS NOT SHOWN IN THE CONTRACT DOCUMENTS.

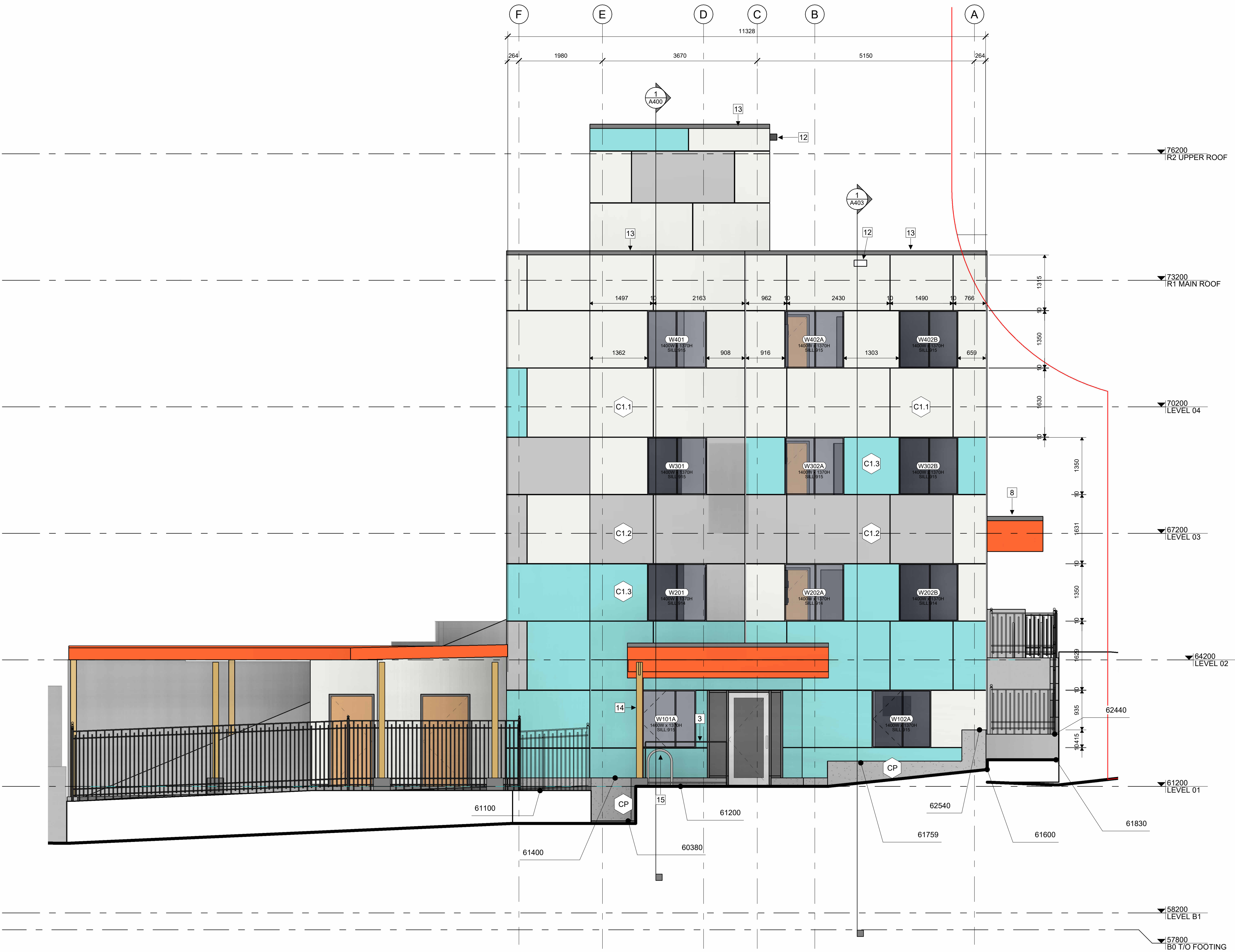
## ELEVATION KEYNOTES:

- LIGHT WELL
- MECHANICAL LOUVRE
- 1070 HIGH GUARDRAIL
- SHADE STRUCTURE
- PREFINISHED METAL CAP FLASHING
- ROOFTOP UNIT
- EXISTING RETAINING WALL TO REMAIN
- ENTRANCE CANOPY
- NEW RETAINING WALL
- FENCING
- CURTAIN WALL
- ROOF OVERFLOW SCUPPER
- PARAPET CAP C/W NON-CORROSIVE PRE-FINISHED METAL FLASHING (PAINTED)
- COLUMN PER STRUCTURAL (PAINTED)
- GALVANIZED STEEL BIKE RACKS SURFACE MOUNTED

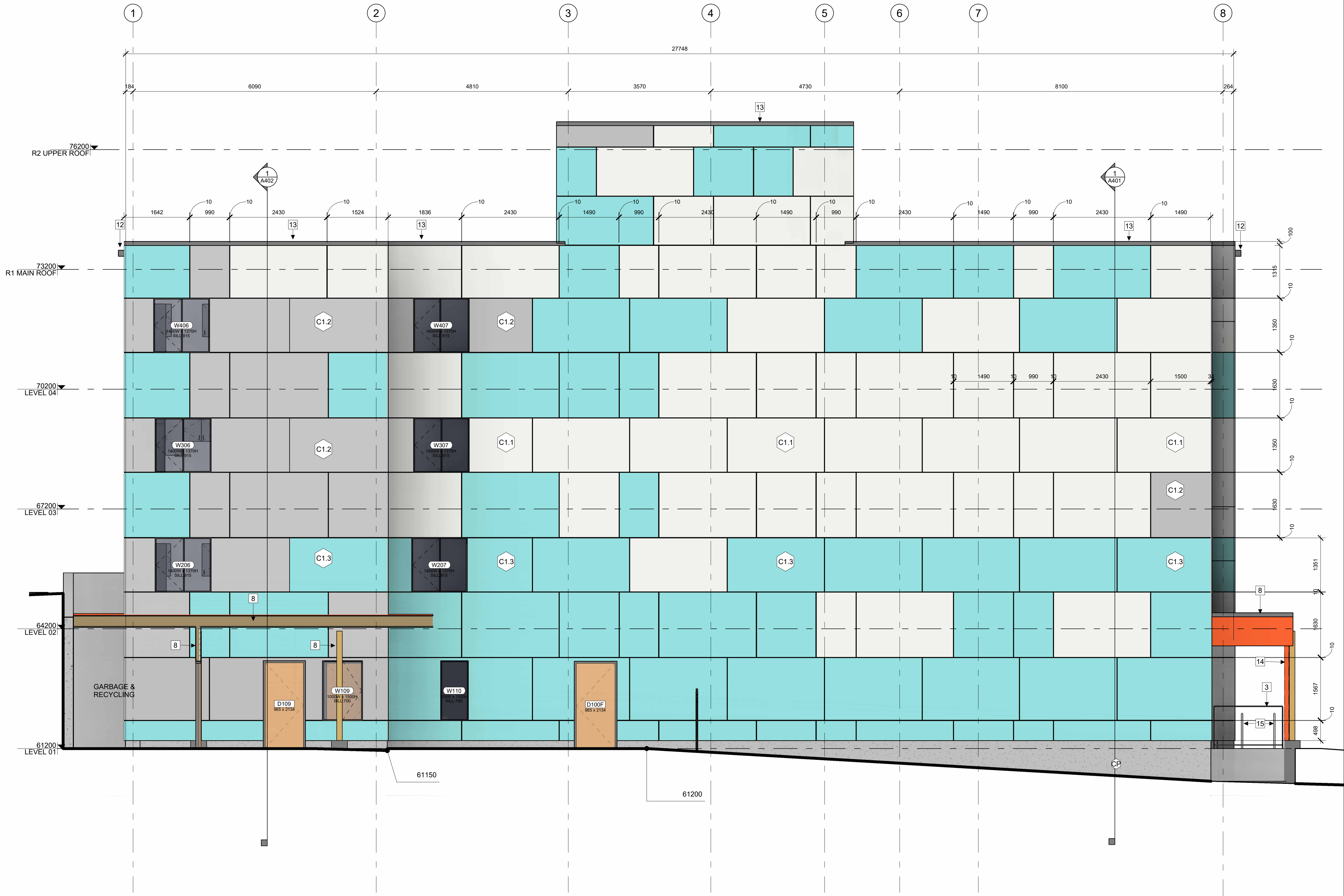
## ELEVATION LEGEND:

HATCH PATTERNS SHOWN ARE FOR GRAPHIC PURPOSES ONLY AND SHOULD BE COORDINATED WITH ACTUAL SPECIFIED MATERIALS.

HATCH	SYMBOL	DESCRIPTION
	C1.1	FIBERCEMENT CLADDING MANUFACTURER: CEMFORT COLOUR: TBD
	C1.2	FIBERCEMENT CLADDING MANUFACTURER: CEMFORT COLOUR: TBD
	C1.3	FIBERCEMENT CLADDING MANUFACTURER: CEMFORT COLOUR: TBD
	CP	FOUNDATION WALL FINISH TBD
		REQUIRED HYDRO CLEARANCE







1 SOUTH ELEVATION  
A303 | 1:50

ELEVATION NOTES:

CONTRACTOR TO COORDINATE WITH MANUFACTURER'S SPECIFICATIONS AND INSTALLATIONS GUIDELINES FOR ALL MATERIAL SEALING, TRANSITIONS, SEPARATIONS, FLASHING, DETAILS, CONNECTIONS, ANCHORAGES, ETC. CONTRACTOR TO PROVIDE DETAIL DRAWINGS OR MOCK-UP FOR ARCHITECT'S REVIEW AND APPROVAL FOR ALL. SPECIAL CONDITIONS NOT SHOWN IN THE CONTRACT DOCUMENTS.

ELEVATION KEYNOTES:

- 1 LIGHT WELL
- 2 MECHANICAL LOUVRE
- 3 1070 HIGH GUARDRAIL
- 4 SHADE STRUCTURE
- 5 PREFINISHED METAL CAP FLASHING
- 6 ROOFTOP UNIT
- 7 EXISTING RETAINING WALL TO REMAIN
- 8 ENTRANCE CANOPY
- 9 NEW RETAINING WALL
- 10 FENCING
- 11 CURTAIN WALL
- 12 ROOF OVERFLOW SCUPPER
- 13 PARAPET CAP C/W NON-CORROSIVE PRE-FINISHED METAL FLASHING (PAINTED)
- 14 COLUMN PER STRUCTURAL (PAINTED)
- 15 GALVANIZED STEEL BIKE RACKS SURFACE MOUNTED

ELEVATION LEGEND:

HATCH PATTERNS SHOWN ARE FOR GRAPHIC PURPOSES ONLY AND SHOULD BE COORDINATED WITH ACTUAL SPECIFIED MATERIALS.

HATCH	SYMBOL	DESCRIPTION
	C1.1	FIBERCEMENT CLADDING MANUFACTURER: CEMFORT COLOUR: TBD
	C1.2	FIBERCEMENT CLADDING MANUFACTURER: CEMFORT COLOUR: TBD
	C1.3	FIBERCEMENT CLADDING MANUFACTURER: CEMFORT COLOUR: TBD
	CP	FOUNDATION WALL FINISH TBD
		REQUIRED HYDRO CLEARANCE

CSV ARCHITECTS

sustainable design · conception écologique

613.564.8118 190 O'Connor Street, Suite 100  
www.csv.ca Ottawa, Ontario, K2P 2R3

CIVIL ENGINEER  
McIntosh Perry  
115 Walgreen Road, RR3, Carp, ON K0A 1L0  
613-636-2184  
www.mcintoshperry.com

LANDSCAPE ARCHITECT  
James B Lennox & Associates  
3332 CARLING AVE. OTTAWA,  
ONTARIO K2H 5A8  
(613) 722-5188

STRUCTURAL ENGINEER  
Cunliffe & Associates  
200-1550 Carling Ave, Ottawa,  
ON  
K1Z8S8  
613-729-7242

MECHANICAL+ ELECTRICAL  
ENGINEER  
Chorley + Bisset  
250 City Centre Ave., Ottawa,  
ON  
K1R1C7  
613-241-0030



STAMP

5	2024-12-23	ISSUED FOR SPCA
4	2024-12-20	ISSUED FOR BUILDING PERMIT
REV DATE	ISSUE	

NOTES

1. OWNERSHIP OF THE COPYRIGHT OF THE DESIGN AND THE WORKS EXECUTED FROM THE DESIGN REMAINS WITH CSV ARCHITECTS, AND MAY NOT BE REPRODUCED IN ANY FORM WITHOUT THE WRITTEN CONSENT OF CSV ARCHITECTS.
2. THE DRAWINGS, PRESENTATIONS AND SPECIFICATIONS AS INSTRUMENTS OF SERVICE ARE AND SHALL REMAIN THE PROPERTY OF CSV ARCHITECTS. THEY ARE NOT TO BE USED BY THE CLIENT ON OTHER PROJECTS OR ON EXTENSIONS TO THIS PROJECT WITHOUT THE WRITTEN CONSENT OF CSV ARCHITECTS.
3. THIS DRAWING IS TO BE READ IN CONJUNCTION WITH ALL OTHER PROJECT DRAWINGS AND SPECIFICATIONS.
4. DO NOT SCALE DRAWINGS. CONTRACTOR SHALL BE RESPONSIBLE TO VERIFY DIMENSIONS ON SITE.
5. ALL WORK SHALL BE IN ACCORDANCE WITH THE ONTARIO BUILDING CODE AND ALL SUPPLEMENTS AND APPLICABLE MUNICIPAL REGULATIONS.

CLIENT

OTTAWA COMMUNITY  
HOUSING  
OTTAWA  
ONTARIO, CANADA

PROJECT

OCH SOMERSET ST. E

214 SOMERSET ST. E, OTTAWA,  
ON.

TITLE  
EXTERIOR ELEVATION  
SOUTH

PROJECT NO: 2022 - 2470  
DRAWN: HL  
APPROVED: AL\_JS  
SCALE: 1: 50  
DATE PRINTED: 12/23/2024 2:17:13 PM

REV DRAWING NO.

5 A303



STAMP

5	2024-12-23	ISSUED FOR SPCA
4	2024-12-20	ISSUED FOR BUILDING PERMIT
REV DATE		ISSUE

NOTES

1. OWNERSHIP OF THE COPYRIGHT OF THE DESIGN AND THE WORKS EXECUTED FROM THE DESIGN REMAINS WITH CSV ARCHITECTS, AND MAY NOT BE REPRODUCED IN ANY FORM WITHOUT THE WRITTEN CONSENT OF CSV ARCHITECTS.
2. THE DRAWINGS, PRESENTATIONS AND SPECIFICATIONS AS INSTRUMENTS OF SERVICE ARE AND SHALL REMAIN THE PROPERTY OF CSV ARCHITECTS. THEY ARE NOT TO BE USED BY THE CLIENT ON OTHER PROJECTS OR ON EXTENSIONS TO THIS PROJECT WITHOUT THE WRITTEN CONSENT OF CSV ARCHITECTS.
3. THIS DRAWING IS TO BE READ IN CONJUNCTION WITH ALL OTHER PROJECT DRAWINGS AND SPECIFICATIONS.
4. DO NOT SCALE DRAWINGS. CONTRACTOR SHALL BE RESPONSIBLE TO VERIFY DIMENSIONS ON SITE.
5. ALL WORK SHALL BE IN ACCORDANCE WITH THE ONTARIO BUILDING CODE AND ALL SUPPLEMENTS AND APPLICABLE MUNICIPAL REGULATIONS.

CLIENT

**OTTAWA COMMUNITY HOUSING**  
OTTAWA  
ONTARIO, CANADA

PROJECT

**OCH SOMERSET ST. E**

214 SOMERSET ST. E, OTTAWA,  
ON.

TITLE  
**EXTERIOR ELEVATION WEST**

PROJECT NO: 2022 - 2470  
DRAWN: HL  
APPROVED: AL\_JS  
SCALE: 1 : 50  
DATE PRINTED: 12/23/2024 2:17:19 PM

REV DRAWING NO.

5 A304

ELEVATION NOTES:

CONTRACTOR TO COORDINATE WITH MANUFACTURER'S SPECIFICATIONS AND INSTALLATIONS GUIDELINES FOR ALL MATERIAL SEALING, TRANSITIONS, SEPARATIONS, FLASHING DETAILS, CONNECTIONS, ANCHORAGES, ETC. CONTRACTOR TO PROVIDE DETAIL DRAWINGS OR MOCK-UP FOR ARCHITECT'S REVIEW AND APPROVAL FOR ALL SPECIAL CONDITIONS NOT SHOWN IN THE CONTRACT DOCUMENTS.

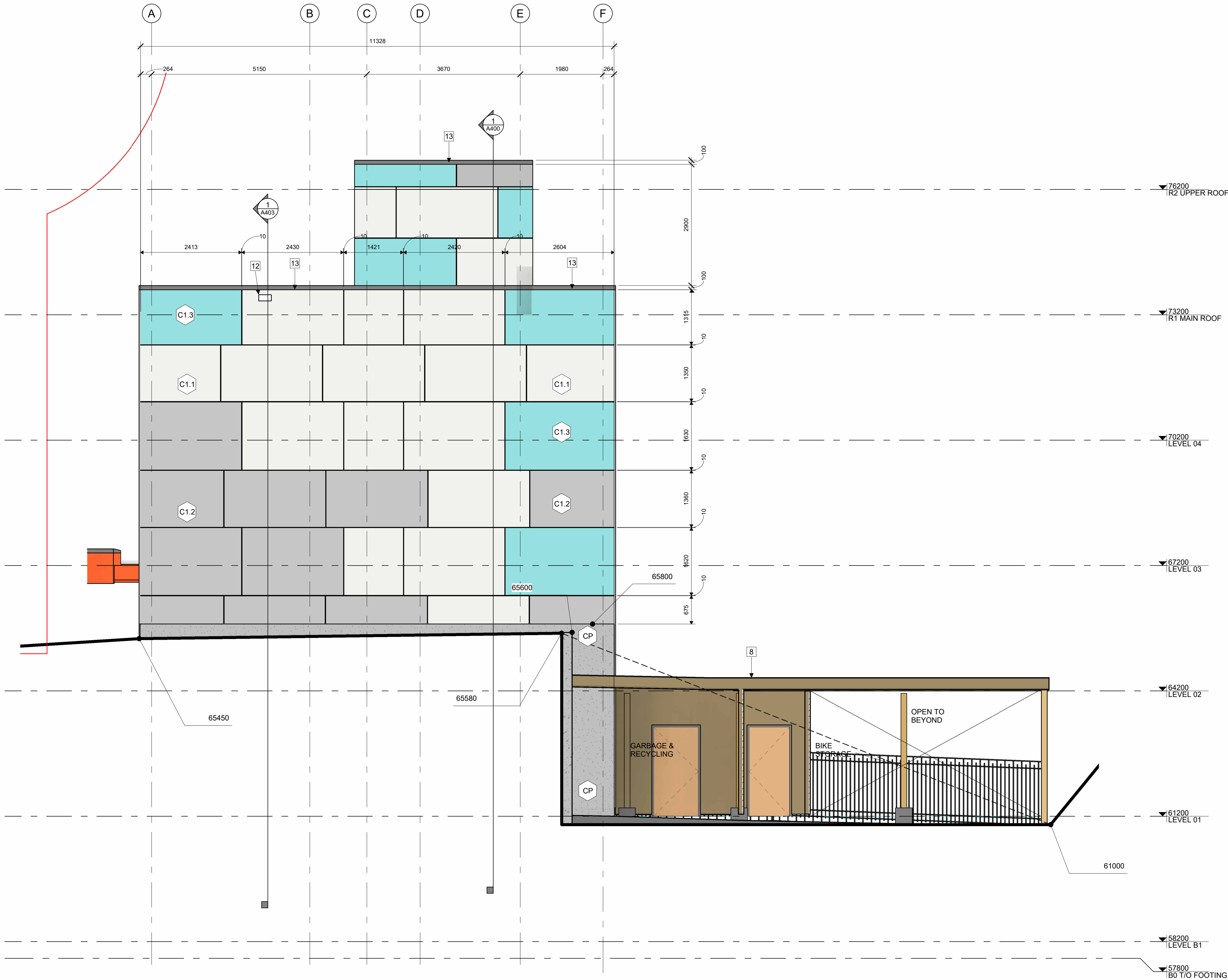
ELEVATION KEYNOTES:

- 1 LIGHT WELL
- 2 MECHANICAL LOUVRE
- 3 1070 HIGH GUARDRAIL
- 4 SHADE STRUCTURE
- 5 PREFINISHED METAL CAP FLASHING
- 6 ROOFTOP UNIT
- 7 EXISTING RETAINING WALL TO REMAIN
- 8 ENTRANCE CANOPY
- 9 NEW RETAINING WALL
- 10 FENCING
- 11 CURTAIN WALL
- 12 ROOF OVERFLOW SCUPPER
- 13 PARAPET CAP C/W NON-CORROSIVE PRE-FINISHED METAL FLASHING (PAINTED)
- 14 COLUMN PER STRUCTURAL (PAINTED)
- 15 GALVANIZED STEEL BIKE RACKS SURFACE MOUNTED

ELEVATION LEGEND:

HATCH PATTERNS SHOWN ARE FOR GRAPHIC PURPOSES ONLY AND SHOULD BE COORDINATED WITH ACTUAL SPECIFIED MATERIALS.

HATCH	SYMBOL	DESCRIPTION
	C1.1	FIBERCEMENT CLADDING MANUFACTURER: CEMFORT COLOUR: TBD
	C1.2	FIBERCEMENT CLADDING MANUFACTURER: CEMFORT COLOUR: TBD
	C1.3	FIBERCEMENT CLADDING MANUFACTURER: CEMFORT COLOUR: TBD
	CP	FOUNDATION WALL FINISH TBD
		REQUIRED HYDRO CLEARANCE



1 WEST ELEVATION  
A304 | 1 : 50