



key plan / plan repère



legend / légende

- LIMIT OF LANDSCAPE WORKS
- PROPERTY LINE
- PLANT KEY
- RETAIN AND PROTECT EXISTING STREETSCAPE
- INDIVIDUAL TREE TO BE PRESERVED. REFER TO NOTES FOR PRESERVATION TECHNIQUES DURING CONSTRUCTION
- CRITICAL ROOT ZONE
- PROPOSED TREE PLANTING
- PLANTING AREA (SHRUBS, GRASSES, AND PERENNIALS)
- UNIT PAVERS

08	coordinated with updated architectural drawings - re-issue for SPA	2024/12/19
07	coordinated with updated civil and architectural drawings - re-issue for SPA	2024/12/12
06	coordinated with updated civil and architectural drawings - re-issue for SPA	2024/09/09
05	revised per City comments - re-issue for SPA	2024/08/26
04	revised per City comments - re-issue for SPA	2024/02/05
03	revised per City comments - re-issue for SPA	2023/09/28
02	revised per City comments - re-issue for SPA	2023/07/14
rev'n	description / la description	yyyy/mm/dd

FOTENN Planning + Design
396 Cooper Street, Suite 300
Ottawa, ON, CANADA K2P 2H7
613.730.5709
fotenn.com

north / le nord stamp / le cachet

project / projet

211-231 Bank Street

drawing / dessin

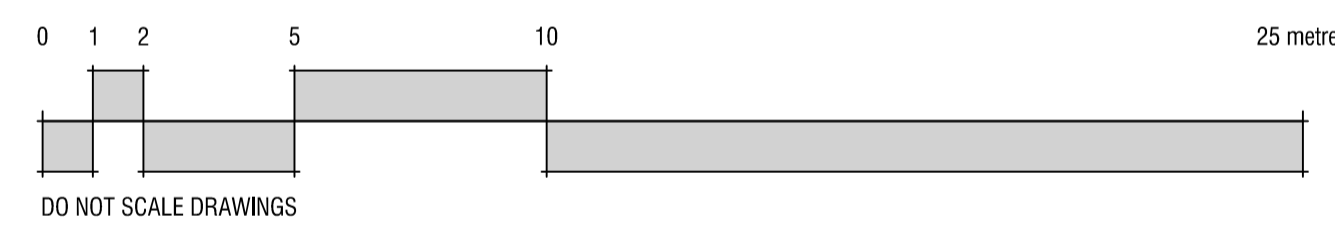
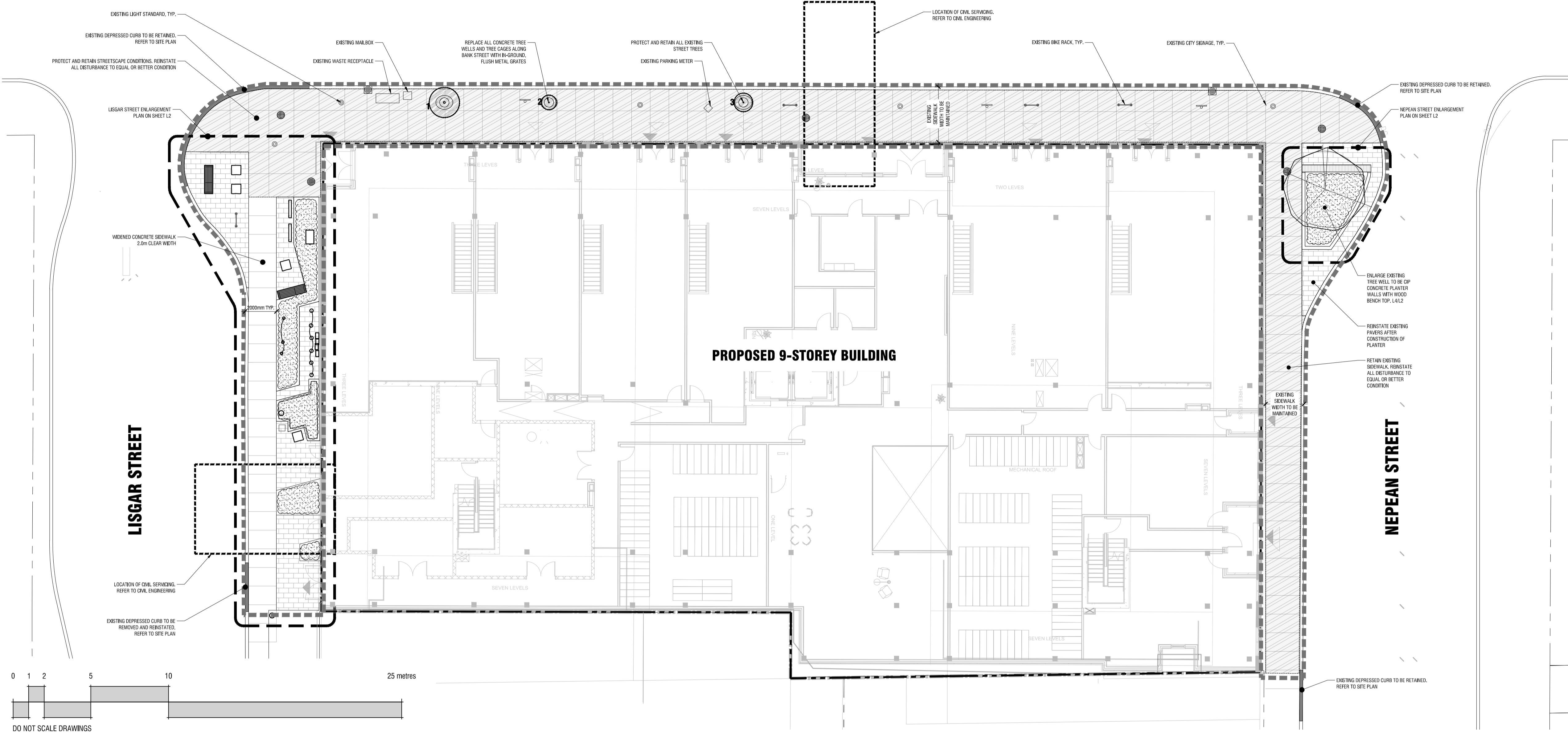
LANDSCAPE PLAN

designed / conçu	drawn / dessiné	reviewed / examiné
bm	bm	DF
date	project number / No. du projet	
2022/11/25		
drawing number / No. du dessin		

L1 of 2

PROPERTY BOUNDARY & TOPOGRAPHIC INFORMATION WAS DERIVED FROM: LOT 35 (SOUTH NEPEAN STREET) AND PART OF LOT 3 (EAST BANK STREET) AND PART OF LOT 35 (NORTH LISGAR STREET), REGISTERED PLAN 2996 CITY OF OTTAWA, DATED JULY 29, 2022. SURVEYOR: ANNIS O'SULLIVAN, VOLLEBEKK LTD. (14 CONCOURSE GATE, SUITE 500, NEPEAN, ON K2E 7S6)

BANK STREET



1 LANDSCAPE PLAN

L1 1:150

GENERAL NOTES:

DO NOT SCALE DRAWINGS;

NOTES ARE APPLICABLE TO ALL DRAWINGS IN THE SET;

Fotenn Consultants Inc. IS NOT RESPONSIBLE FOR ACCURACY OF BASE INFORMATION;

REFER TO CIVIL ENGINEERING DRAWINGS FOR GRADING & SITE SERVICING INFORMATION;

THE CONTRACTOR IS RESPONSIBLE FOR CONFIRMING SITE CONDITIONS AND REPORTING ANY DISCREPANCIES TO THE LANDSCAPE ARCHITECT;

THE CONTRACTOR IS RESPONSIBLE FOR CONFIRMING EXACT LOCATIONS OF ALL UNDERGROUND SERVICES AND OBTAINING CLEARANCE FROM ALL APPLICABLE UTILITIES. PROPOSED WORKS FOUND TO BE IN CONFLICT WITH UNDERGROUND SERVICES MAY BE ADJUSTED AT THE DIRECTION OF THE LANDSCAPE ARCHITECT;

LANDSCAPE ELEMENTS SHOWN ARE SUBJECT TO THE FINAL LOCATION OF UNDERGROUND SERVICES AND UTILITIES;

PERFORM WORK IN ACCORDANCE WITH DETAILS AND SPECIFICATIONS;

ALL PLANT MATERIAL SHALL BE No. 1 NURSERY STOCK AND SHALL MEET OR EXCEED THE SPECIFICATION OF THE Canadian Standards for Nursery Stock, AS PUBLISHED BY THE Canadian Nursery Landscape Association;

SPECIES SUBSTITUTIONS ARE NOT PERMITTED WITHOUT PRIOR WRITTEN APPROVAL OF THE LANDSCAPE ARCHITECT;

STANDARDS FOR TREE PLANTING:

MAINTAIN A MINIMUM DISTANCE OF 2.5m FROM LIGHT STANDARDS;

MAINTAIN A MINIMUM DISTANCE OF 3.0m FROM ALL HYDRO TRANSFORMERS;

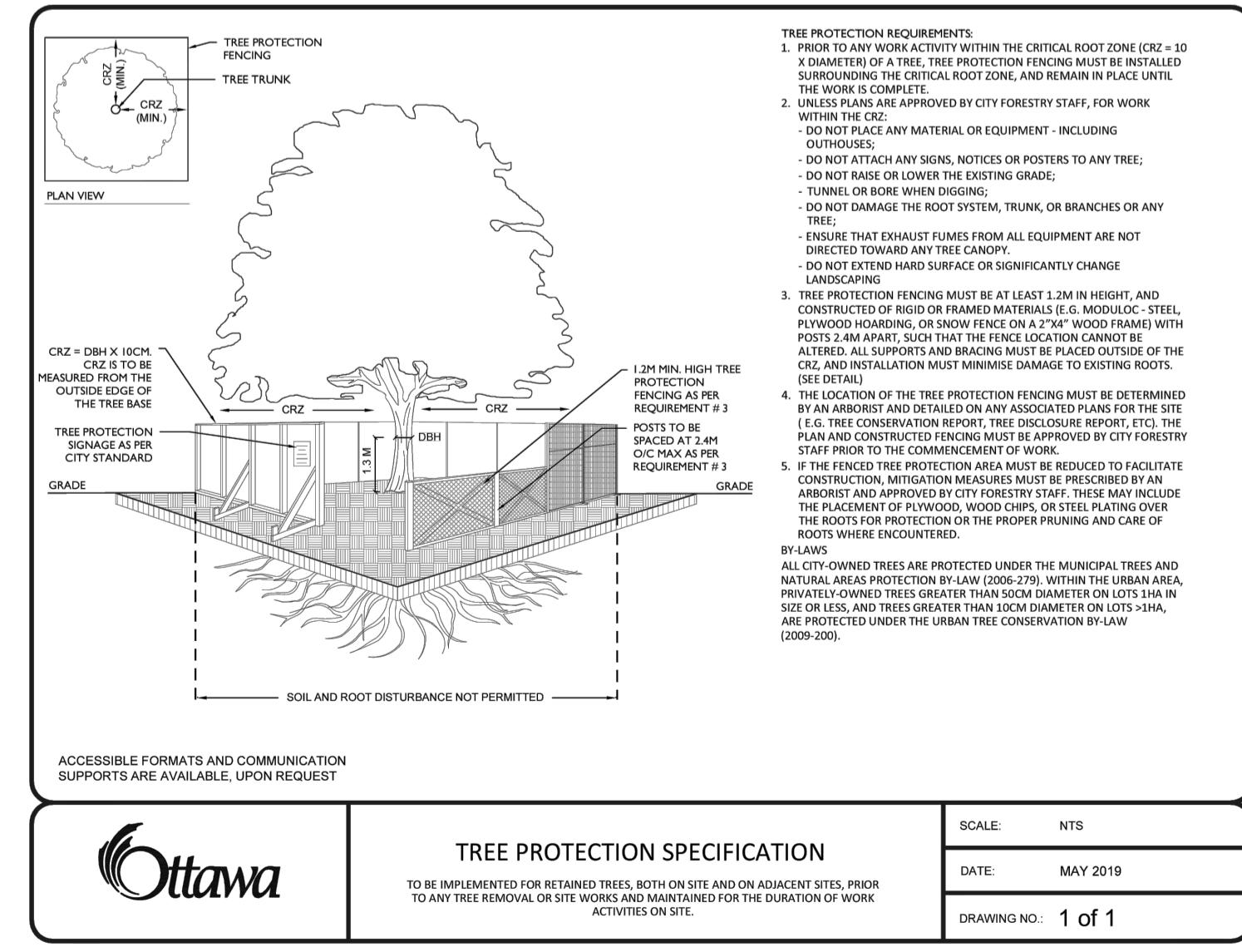
MAINTAIN A MINIMUM DISTANCE OF 1.0m FROM ALL UNDERGROUND SERVICES;

MAINTAIN A MINIMUM DISTANCE OF 1.0m FROM ALL BELL AND CABLE BOXES;

IMPORTANT NOTICE FOR CONTRACTOR:

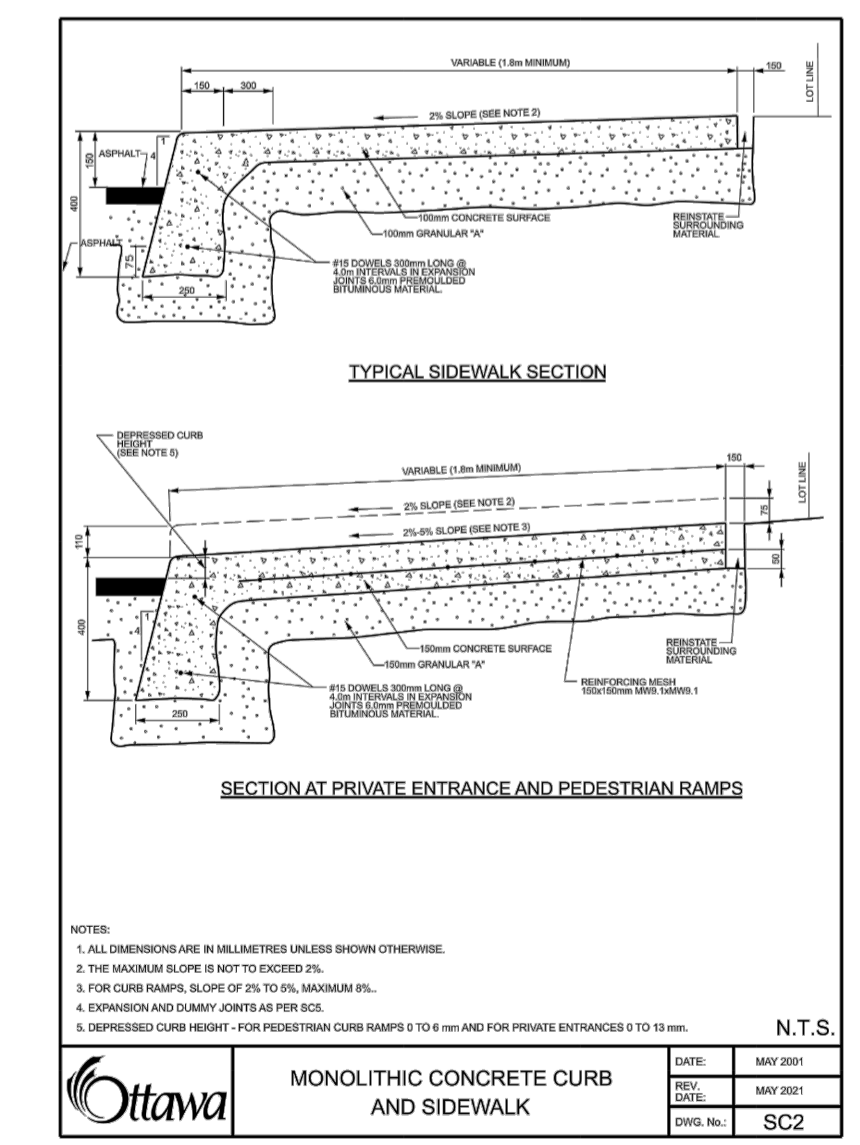
THE CITY OF OTTAWA REQUIRES A Certificate of Completion (F1) Landscape Works TO BE SUBMITTED AND SEALED BY THE LANDSCAPE ARCHITECT. CONTRACTORS ARE RESPONSIBLE FOR FAMILIARIZING THEMSELVES WITH THE REQUIREMENTS OF THIS PROCESS AND PROVIDING SUFFICIENT NOTICE TO THE LANDSCAPE ARCHITECT TO CONDUCT SITE REVIEWS **DURING INSTALLATION** OF TREES. THE 1 YEAR WARRANTY PERIOD SHALL NOT COMMENCE UNTIL THE LANDSCAPE ARCHITECT HAS SUBMITTED THE F1 Certificate.

PRIOR TO INSTALLATION OF TREES, THE DEVELOPER WILL CONTACT THE PLANNING AND GROWTH MANAGEMENT AND FORESTRY SERVICES TO REVIEW THE SPECIES AND LOCATION OF TREES.



2 CoO STANDARD TREE PROTECTION DETAIL

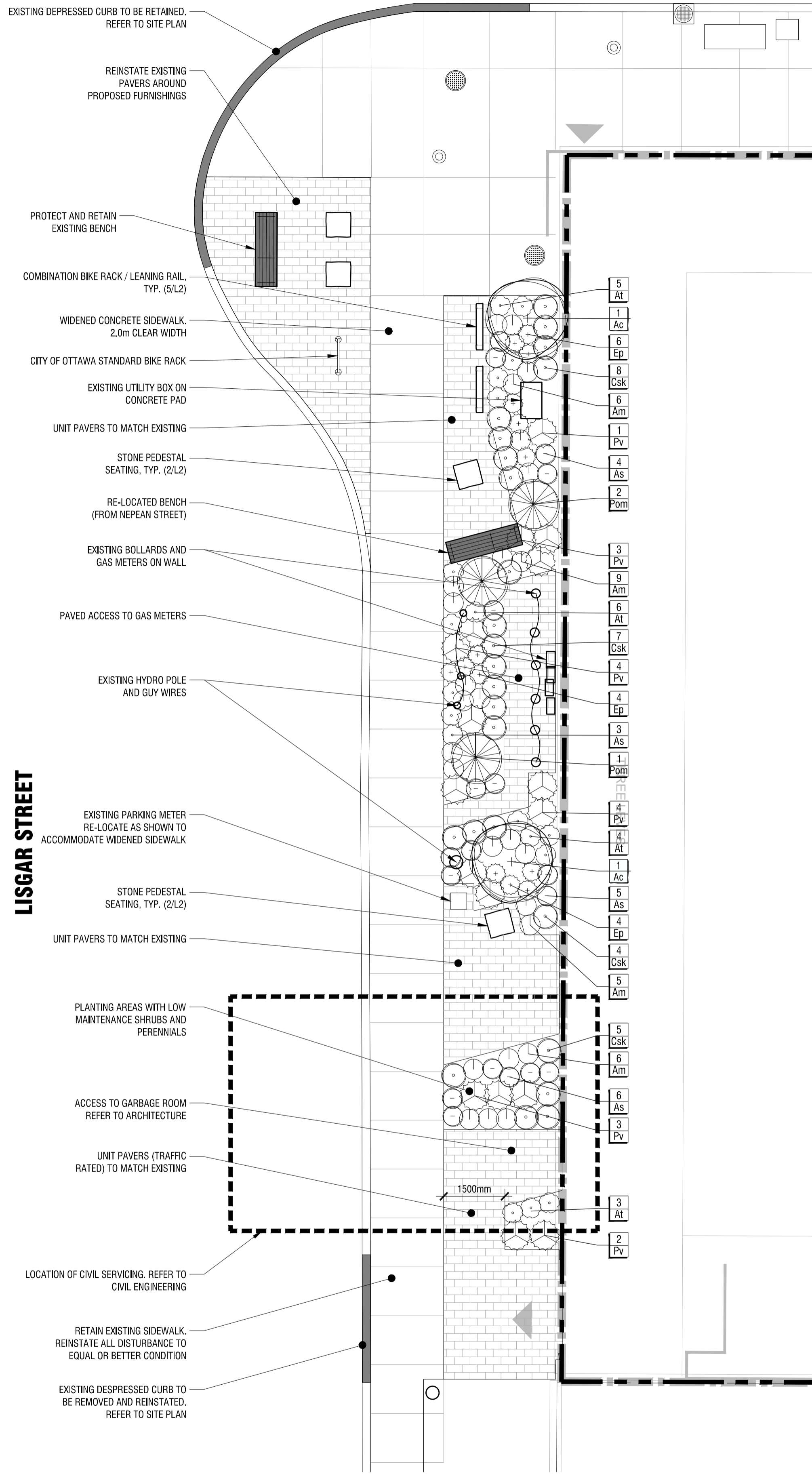
L1 NTS



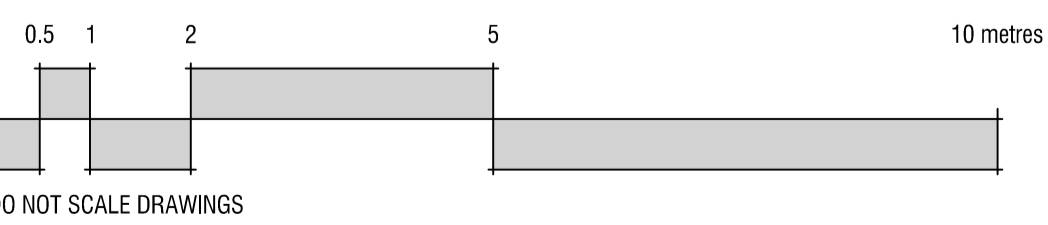
3 CoO STANDARD CONCRETE SIDEWALK

L1 NTS

PRELIMINARY
NOT FOR CONSTRUCTION



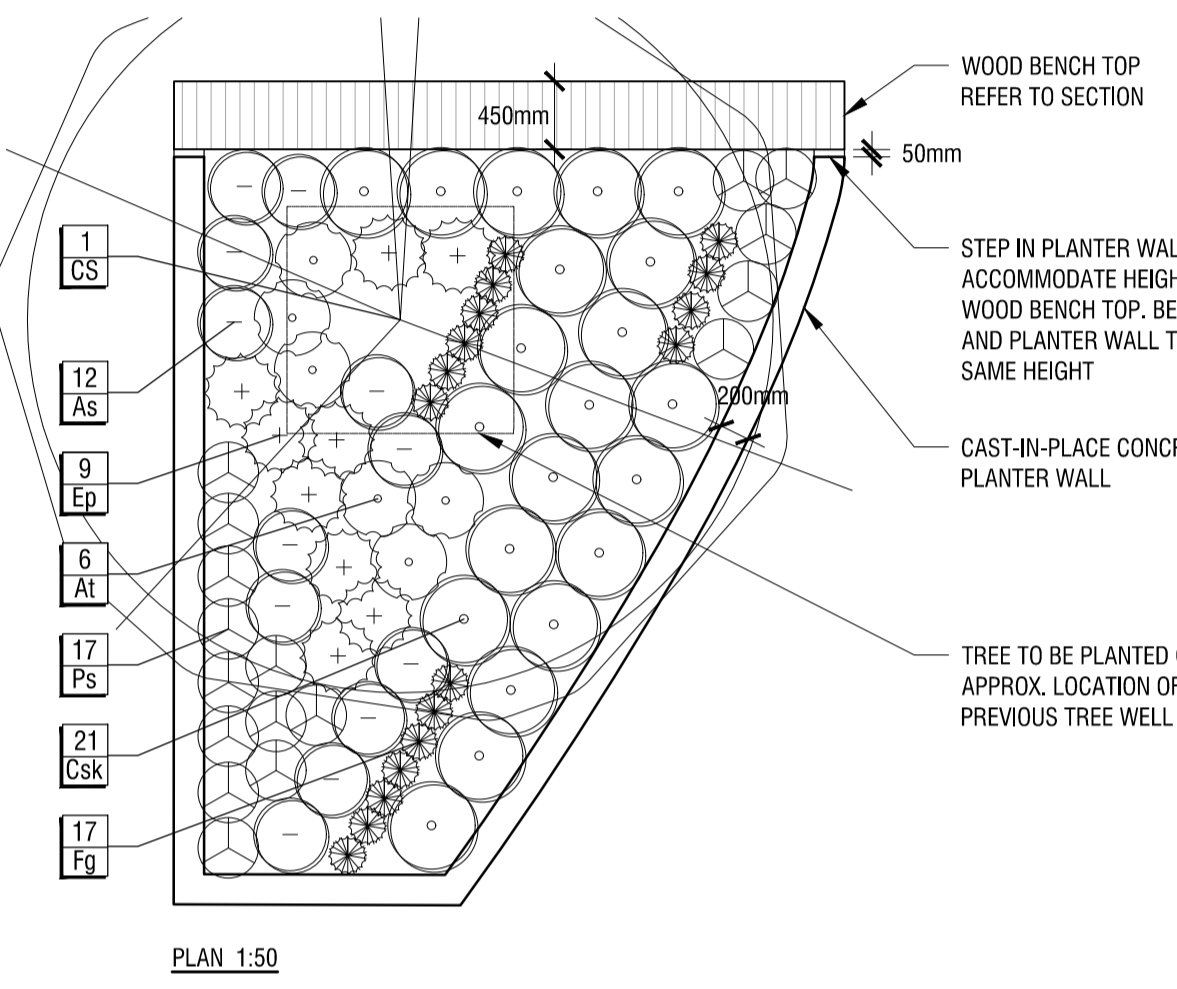
LISGAR STREET



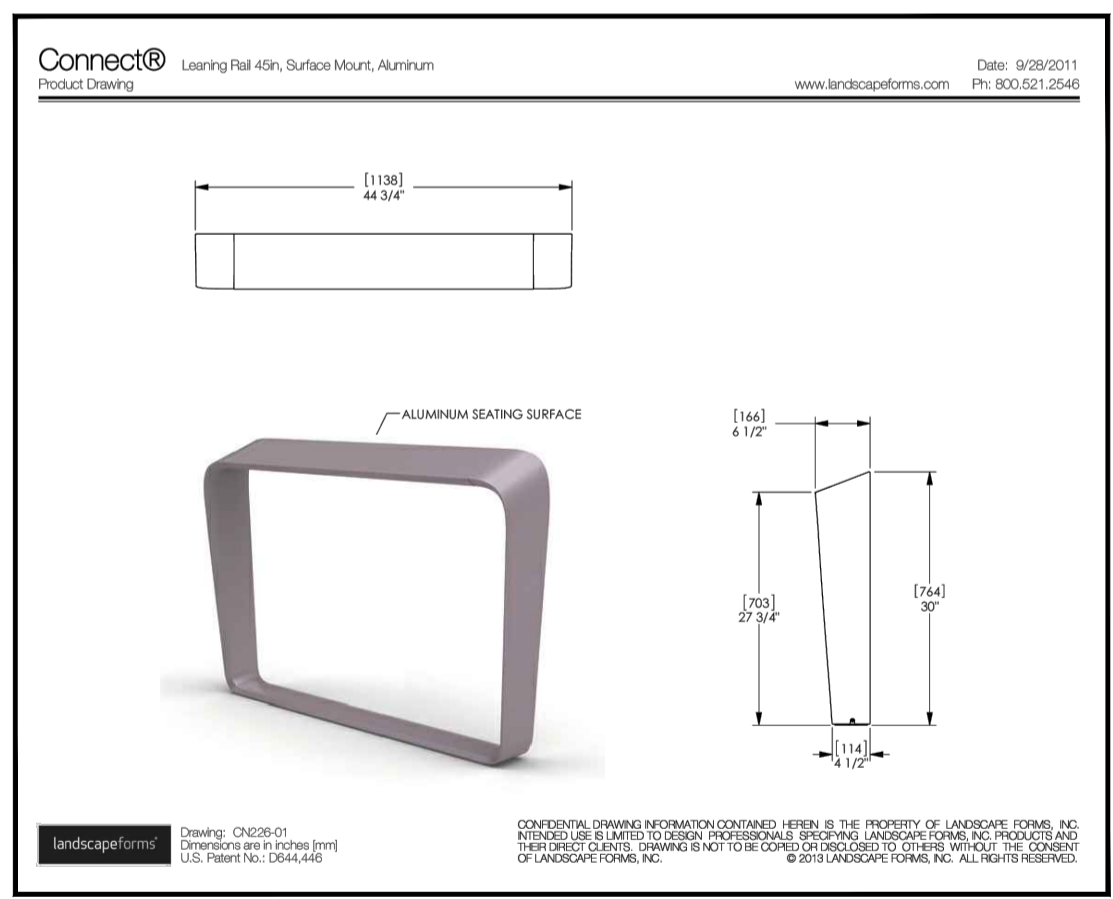
1 LISGAR PARKETTE DETAIL PLAN
L2 1:75



2 PARKETTE PRECEDENT IMAGE
L2 No Scale



4 WOOD TOP BENCH ON PLANTER WALL DETAIL AND PLANTING PLAN
L2 AS NOTED

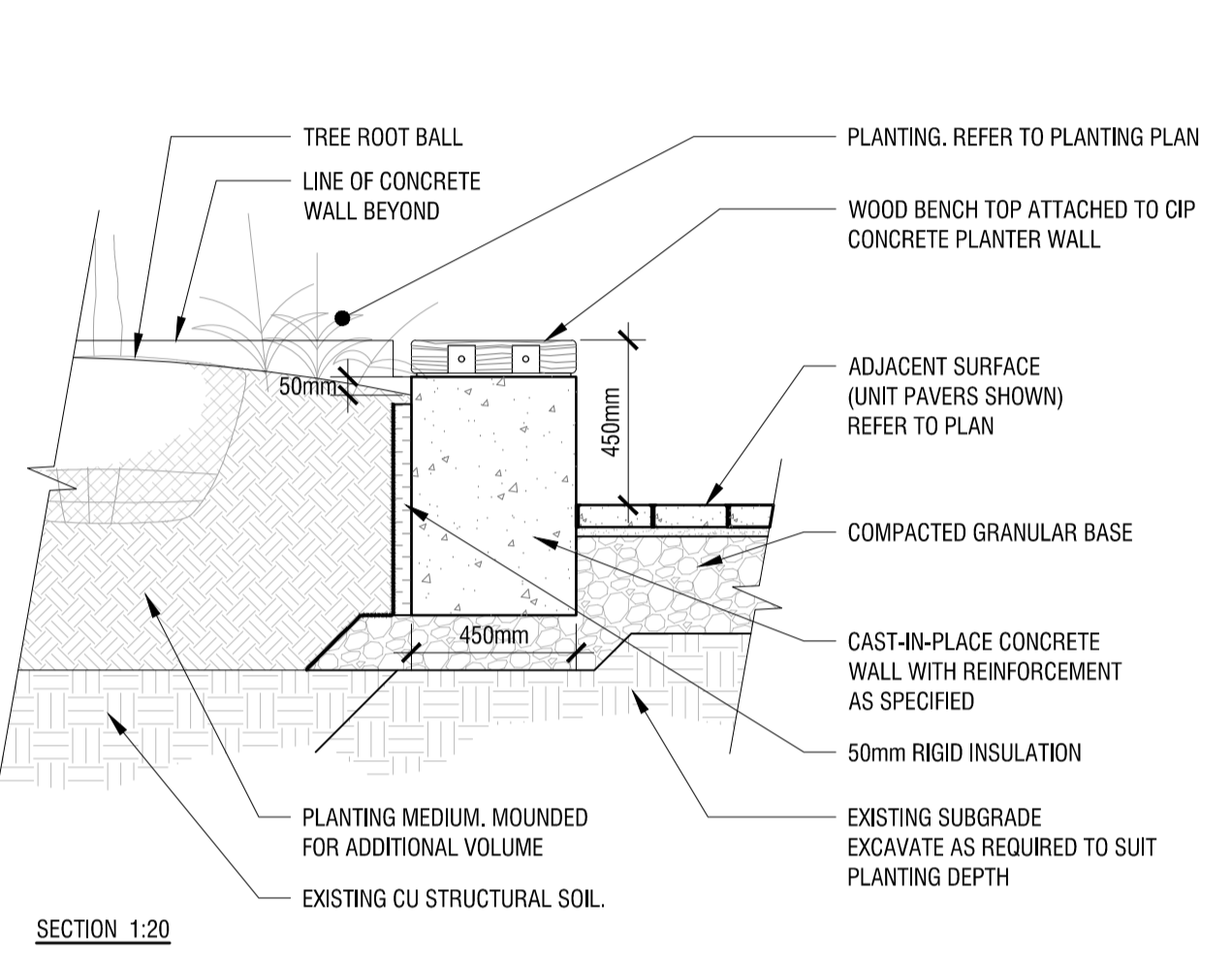


5 LEANING RAIL
L2 N.T.S.

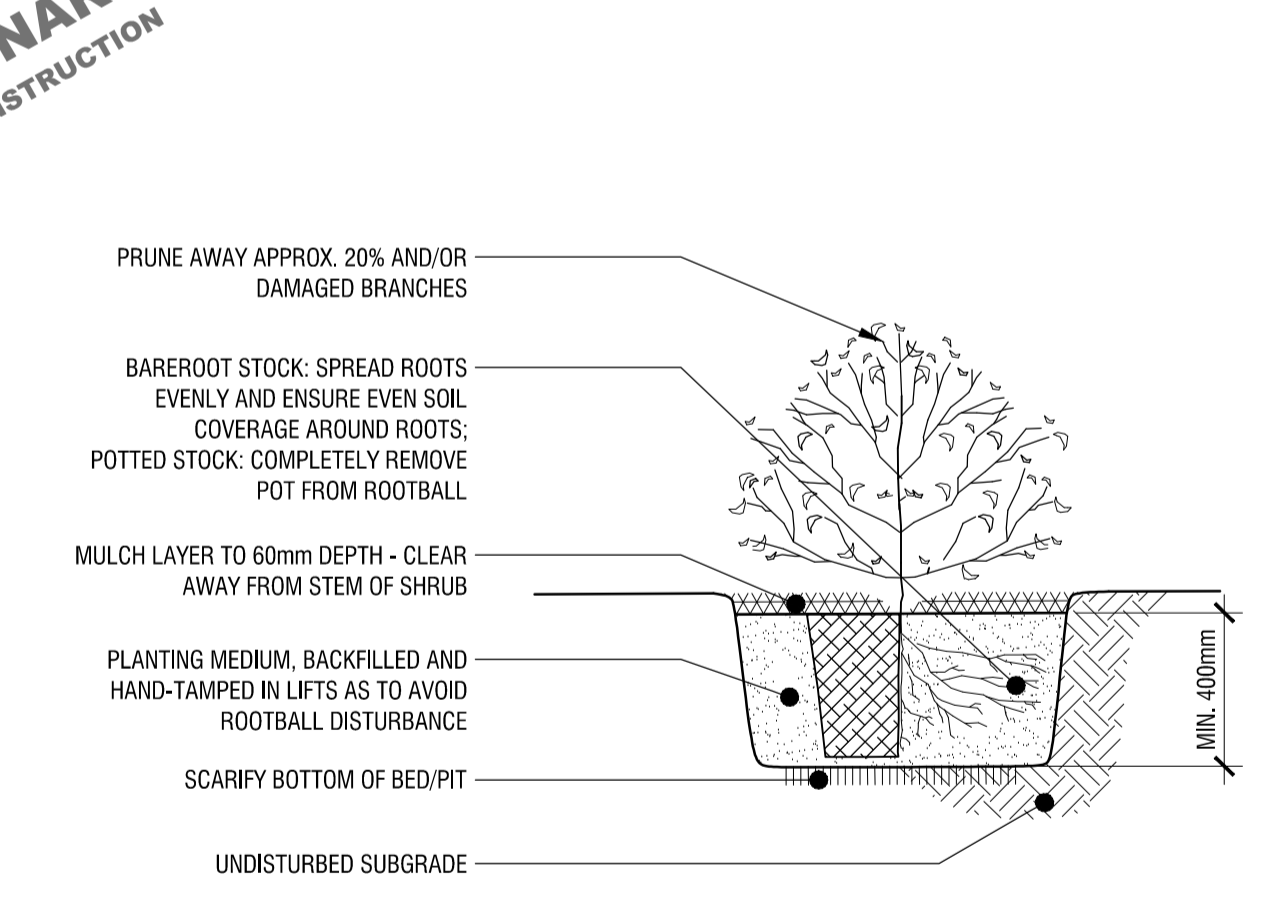
CODE	QTY	BOTANICAL NAME	COMMON NAME	SIZE / CONDITION / SPACING
TREES				
CS	1	<i>Catalpa speciosa</i>	Northern Catalpa	70mm cal. / W.B.
SHRUBS				
Ac	2	<i>Amelanchier canadensis</i>	Canadian Serviceberry	100cm ht. / specimen quality / Refer to plan for spacing
Csk	45	<i>Cornus sericea</i> 'Kelsey'	Kelsey's Dwarf Red Twig Dogwood	30cm ht. / 45cm sp.
Pom	3	<i>Physocarpus opulifolius</i> 'Monro'	Diabolo® Purple Ninebark	#3 Pot / Refer to plan for spacing
PERENNIALS & GRASSES				
Am	26	<i>Achillea millefolium</i>	Common Yarrow	#1 Pot / 45cm sp.
At	24	<i>Asclepias tuberosa</i>	Butterfly Milkweed	#1 Pot / 45cm sp.
As	30	<i>Aster laevis</i> 'Bluebird'	Bluebird Smooth Aster	#1 Pot / 45cm sp.
Ep	23	<i>Echinacea purpurea</i>	Coneflower	#1 Pot / 45cm sp.
Fg	17	<i>Festuca glauca</i>	Blue Fescue	#1 Pot / 30cm cp.
Pv	17	<i>Panicum virgatum</i> 'Northwind'	Northwind Switch Grass	#2 Pot / 90cm sp.
Ps	17	<i>Phlox subulata</i> 'Snowflake'	Snowflake Creeping Phlox	#1 Pot / 45cm sp.



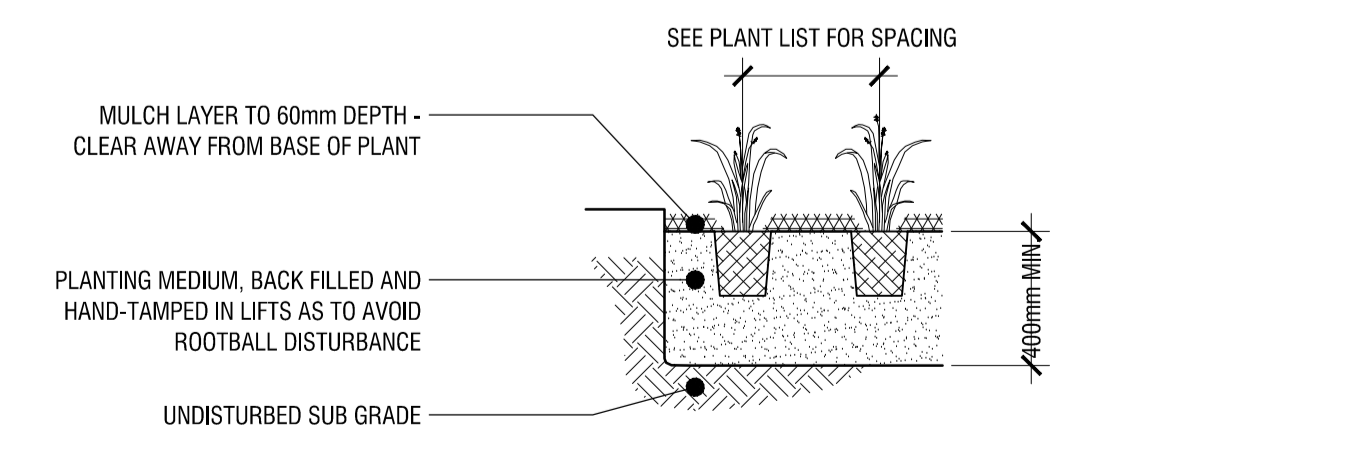
3 STONE PEDESTAL SEATING PRECEDENT
L2 No Scale



6 SHRUB PLANTING DETAIL
L2 1:20

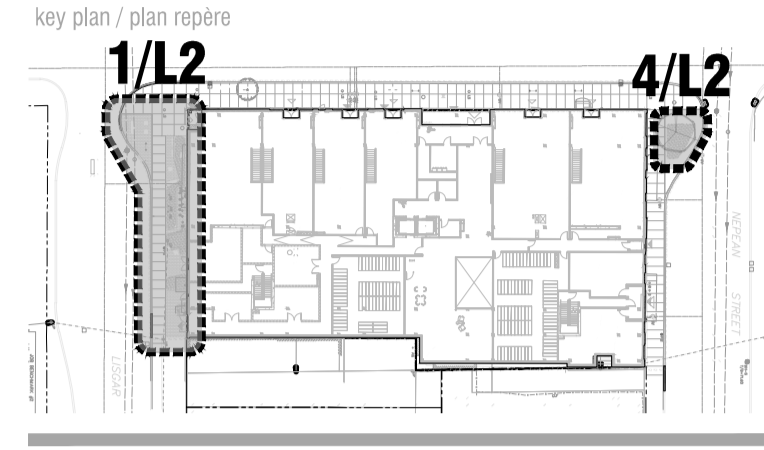


7 PERENNIAL & GROUND COVER PLANTING DETAIL
L2 1:20

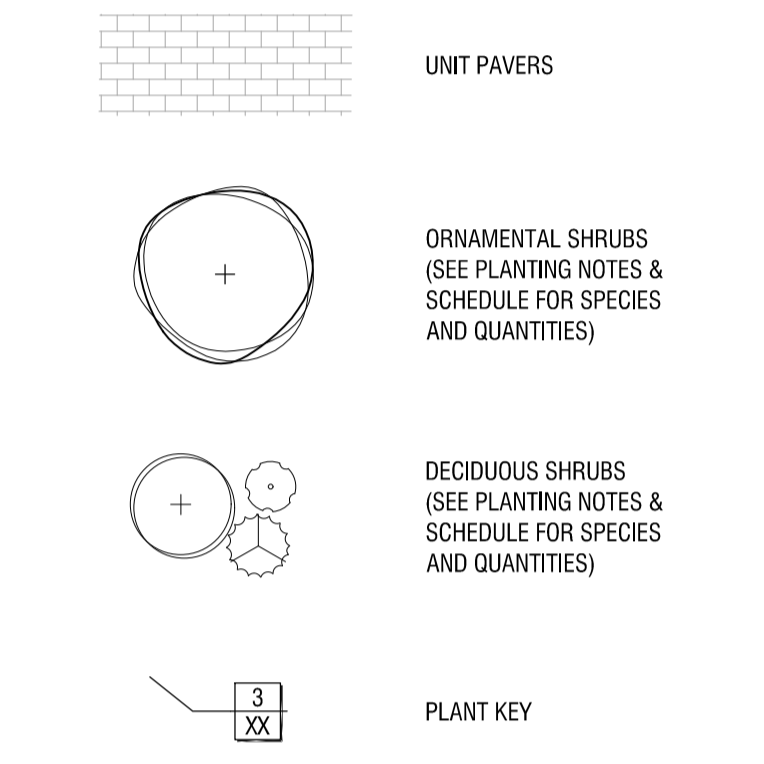


Copyright Reserved
The Copyrights to all designs and drawings are the property of Fotenn Consultants Inc. Unauthorized reproduction or use is forbidden. DO NOT SCALE DRAWING

Copyright réservés
Les droits d'auteur à tous les modèles et dessins sont la propriété de Fotenn Consultants Inc. Reproduction ou utilisation non autorisée est interdite. NE PAS L'ÉCHELLE DE DESSIN

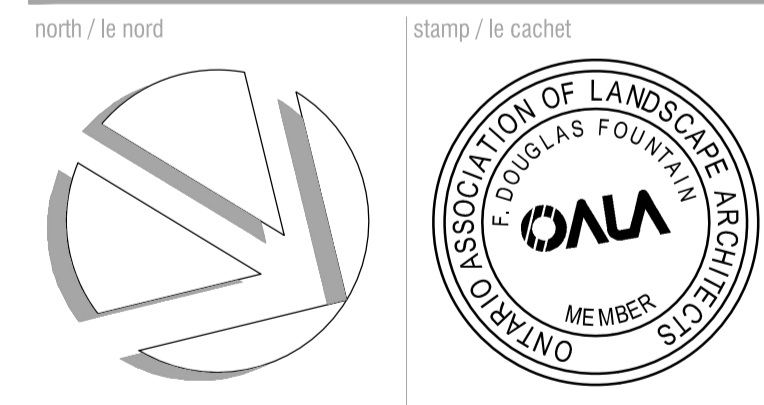


Legend / légende



rev'n	description / la description	yyyy/mm/dd
08	coordinated with updated architectural drawings - re-issue for SPA	2024/12/19
07	coordinated with updated civil and architectural drawings - re-issue for SPA	2024/12/12
06	coordinated with updated civil and architectural drawings - re-issue for SPA	2024/09/09
05	revised per City comments - re-issue for SPA	2024/08/26
04	revised per City comments - re-issue for SPA	2024/02/05
03	revised per City comments - re-issue for SPA	2023/09/28
02	revised per City comments - re-issue for SPA	2023/07/14

FOTENN Planning + Design
396 Cooper Street, Suite 300
Ottawa, ON, CANADA K2P 2H7
613.730.5709
fotenn.com



project / projet

211-231 Bank Street

drawing / dessin

PARKETTE PLAN, PLANTING PLAN AND DETAILS

designed / conçu
bm

drawn / dessiné
bm

reviewed / examiné
DF

date
2022/11/25

project number / No. du projet

drawing number / No. du dessin

L2 of 2

FILE NUMBER DDG-02-22-0127 007-12-22-0188