

ELEVATION NOTES

CLADDING LEGEND

- 1 ALUMINUM PANEL
DARK GREY
- 2 ALUMINUM PANEL
BLACK
- 3 ALUMINUM PLANKS
GREY WOODGRAIN FINISH
- 4 ALUMINUM LOUVRE SYSTEM
GREY WOODGRAIN FINISH
- 5 STONE MASONRY
LIGHT GREY
- 6 ALUMINUM AND GLASS RAILING
- 7 PARAPET - LIGHT GREY
- 8 PARAPET - DARK GREY

GENERAL ARCHITECTURAL NOTES:

1. This drawing is the property of the Architect and may not be reproduced or used without the expressed consent of the Architect.

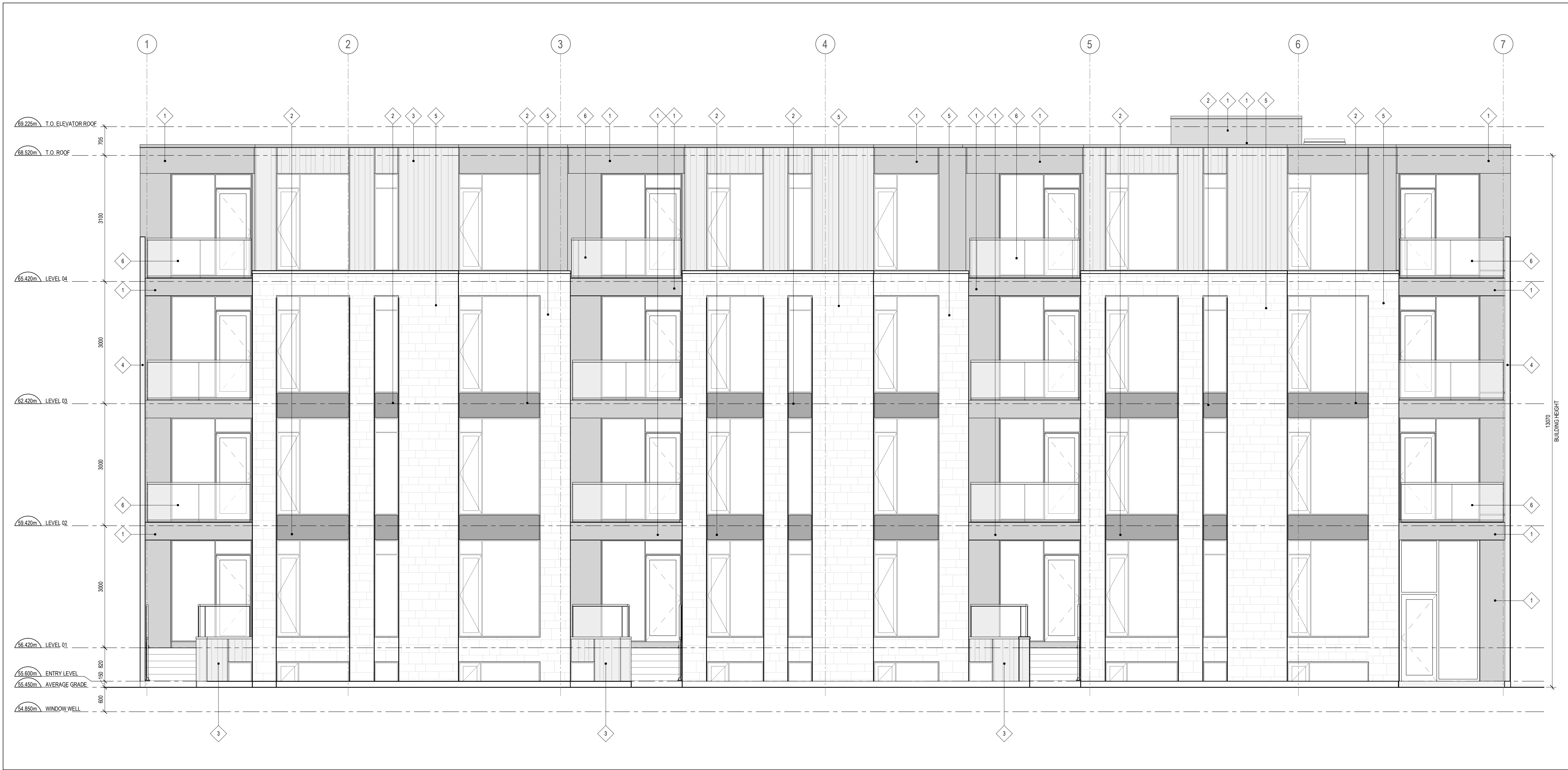
2. Drawings are not to be scaled. The Contractor is responsible for checking and verifying all levels and dimensions and shall report all discrepancies to the Architect and obtain clarification prior to commencing work.

3. Upon notice in writing, the Architect will provide written clarification or supplementary information regarding the intent of the Contract Documents.

4. The Architectural drawings are to be read in conjunction with all other Contract Documents including Project Manuals and the Structural, Mechanical and Electrical Drawings.

5. Positions of exposed or finished Mechanical or Electrical devices, fittings and fixtures are indicated on the Architectural Drawings. Locations shown on the Architectural Drawings shall govern over Mechanical and Electrical Drawings. Mechanical and Electrical items not clearly located will be located as directed by the Architect.

6. These documents are not to be used for construction unless specifically noted for such purpose.



3	ISSUED FOR SITE PLAN CONTROL	2024-12-19
2	ISSUED FOR COORDINATION	2024-12-11
1	ISSUED FOR COORDINATION	2024-11-14

ISSUE RECORD

project1
studio

Project1 Studio Incorporated
[613.884.3939] | mail@project1studio.ca

73 ST-CECILE ST

73-83 St-Cecile Street
Ottawa, ON
K1L 5L4

PROJ	SCALE	DRAWN	REVIEWED
2415	NOTED	BH	RMK

SOUTH ELEVATION

A201

ELEVATION NOTES

CLADDING LEGEND

- 1 ALUMINUM PANEL
DARK GREY
- 2 ALUMINUM PANEL
BLACK
- 3 ALUMINUM PLANKS
GREY WOODGRAIN FINISH
- 4 ALUMINUM LOUVRE SYSTEM
GREY WOODGRAIN FINISH
- 5 STONE MASONRY
LIGHT GREY
- 6 ALUMINUM AND GLASS RAILING
- 7 PARAPET - LIGHT GREY
- 8 PARAPET - DARK GREY

GENERAL ARCHITECTURAL NOTES:

1. This drawing is the property of the Architect and may not be reproduced or used without the expressed consent of the Architect.

2. Drawings are not to be scaled. The Contractor is responsible for checking and verifying all levels and dimensions and shall report all discrepancies to the Architect and obtain clarification prior to commencing work.

3. Upon notice in writing, the Architect will provide written clarification or supplementary information regarding the intent of the Contract Documents.

4. The Architectural drawings are to be read in conjunction with all other Contract Documents including Project Manuals and the Structural, Mechanical and Electrical Drawings.

5. Positions of exposed or finished Mechanical or Electrical devices, fittings and fixtures are indicated on the Architectural Drawings. Locations shown on the Architectural Drawings shall govern over Mechanical and Electrical Drawings. Mechanical and Electrical items not clearly located will be located as directed by the Architect.

6. These documents are not to be used for construction unless specifically noted for such purpose.

3	ISSUED FOR SITE PLAN CONTROL	2024-12-19
2	ISSUED FOR COORDINATION	2024-12-11
1	ISSUED FOR COORDINATION	2024-11-14

ISSUE RECORD

project1
studio

Project1 Studio Incorporated
(613.884.3939 | mail@project1studio.ca)

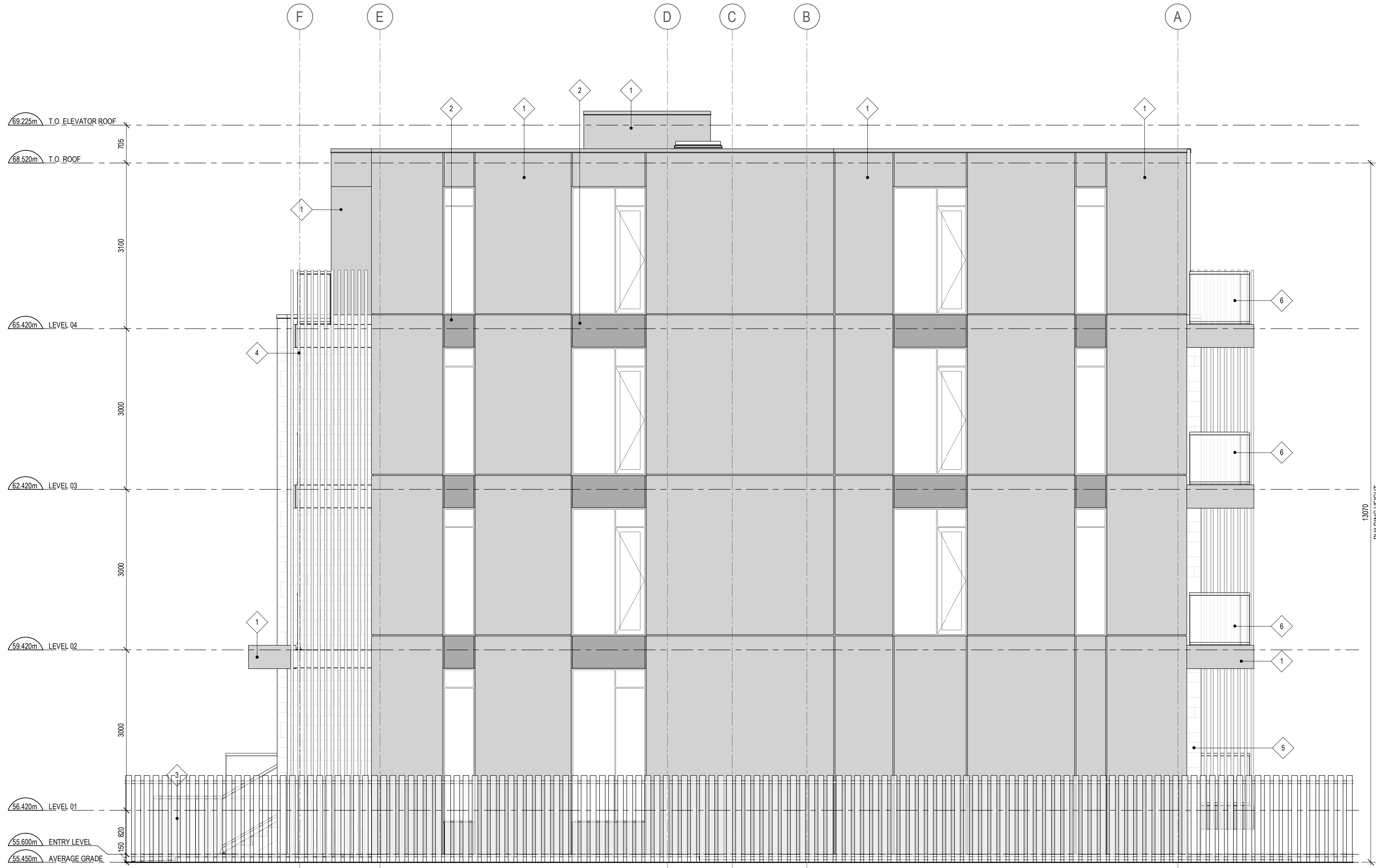
73 ST-CECILE ST

73-83 St-Cecile Street
Ottawa, ON
K1L 5L4

PROJ	SCALE	DRAWN	REVIEWED
2415	NOTED	BH	RMK

EAST ELEVATION

A202



ELEVATION NOTES

CLADDING LEGEND

- 1 ALUMINUM PANEL
DARK GREY
- 2 ALUMINUM PANEL
BLACK
- 3 ALUMINUM PLANKS
GREY WOODGRAIN FINISH
- 4 ALUMINUM LOUVRE SYSTEM
GREY WOODGRAIN FINISH
- 5 STONE MASONRY
LIGHT GREY
- 6 ALUMINUM AND GLASS RAILING
- 7 PARAPET - LIGHT GREY
- 8 PARAPET - DARK GREY

GENERAL ARCHITECTURAL NOTES:

1. This drawing is the property of the Architect and may not be reproduced or used without the expressed consent of the Architect.

2. Drawings are not to be scaled. The Contractor is responsible for checking and verifying all levels and dimensions and shall report all discrepancies to the Architect and obtain clarification prior to commencing work.

3. Upon notice in writing, the Architect will provide written clarification or supplementary information regarding the intent of the Contract Documents.

4. The Architectural drawings are to be read in conjunction with all other Contract Documents including Project Manuals and the Structural, Mechanical and Electrical Drawings.

5. Positions of exposed or finished Mechanical or Electrical devices, fittings and fixtures are indicated on the Architectural Drawings. Locations shown on the Architectural Drawings shall govern over Mechanical and Electrical Drawings. Mechanical and Electrical items not clearly located will be located as directed by the Architect.

6. These documents are not to be used for construction unless specifically noted for such purpose.



3	ISSUED FOR SITE PLAN CONTROL	2024-12-19
2	ISSUED FOR COORDINATION	2024-12-11
1	ISSUED FOR COORDINATION	2024-11-14

ISSUE RECORD

project1
studio

Project1 Studio Incorporated
[613.884.3939] [mail@project1studio.ca]

73 ST-CECILE ST

73-83 St-Cecile Street
Ottawa, ON
K1L 5L4

PROJ	SCALE	DRAWN	REVIEWED
2415	NOTED	BH	RMK

NORTH ELEVATION

A203

ELEVATION NOTES

CLADDING LEGEND

- 1 ALUMINUM PANEL
DARK GREY
- 2 ALUMINUM PANEL
BLACK
- 3 ALUMINUM PLANKS
GREY WOODGRAIN FINISH
- 4 ALUMINUM LOUVRE SYSTEM
GREY WOODGRAIN FINISH
- 5 STONE MASONRY
LIGHT GREY
- 6 ALUMINUM AND GLASS RAILING
- 7 PARAPET - LIGHT GREY
- 8 PARAPET - DARK GREY

GENERAL ARCHITECTURAL NOTES:

1. This drawing is the property of the Architect and may not be reproduced or used without the expressed consent of the Architect.
2. Drawings are not to be scaled. The Contractor is responsible for checking and verifying all levels and dimensions and shall report all discrepancies to the Architect and obtain clarification prior to commencing work.
3. Upon notice in writing, the Architect will provide written clarification or supplementary information regarding the intent of the Contract Documents.
4. The Architectural drawings are to be read in conjunction with all other Contract Documents including Project Manuals and the Structural, Mechanical and Electrical Drawings.
5. Positions of exposed or finished Mechanical or Electrical devices, fittings and fixtures are indicated on the Architectural Drawings. Locations shown on the Architectural Drawings shall govern over Mechanical and Electrical Drawings. Mechanical and Electrical items not clearly located will be located as directed by the Architect.
6. These documents are not to be used for construction unless specifically noted for such purpose.

3	ISSUED FOR SITE PLAN CONTROL	2024-12-19
2	ISSUED FOR COORDINATION	2024-12-11
1	ISSUED FOR COORDINATION	2024-11-14

ISSUE RECORD

project1
studio

Project1 Studio Incorporated
[613.884.3939] [mail@project1studio.ca]

73 ST-CECILE ST

73-83 St-Cecile Street
Ottawa, ON
K1L 5L4

PROJ	SCALE	DRAWN	REVIEWED
2415	NOTED	BH	RMK

WEST ELEVATION

A204

