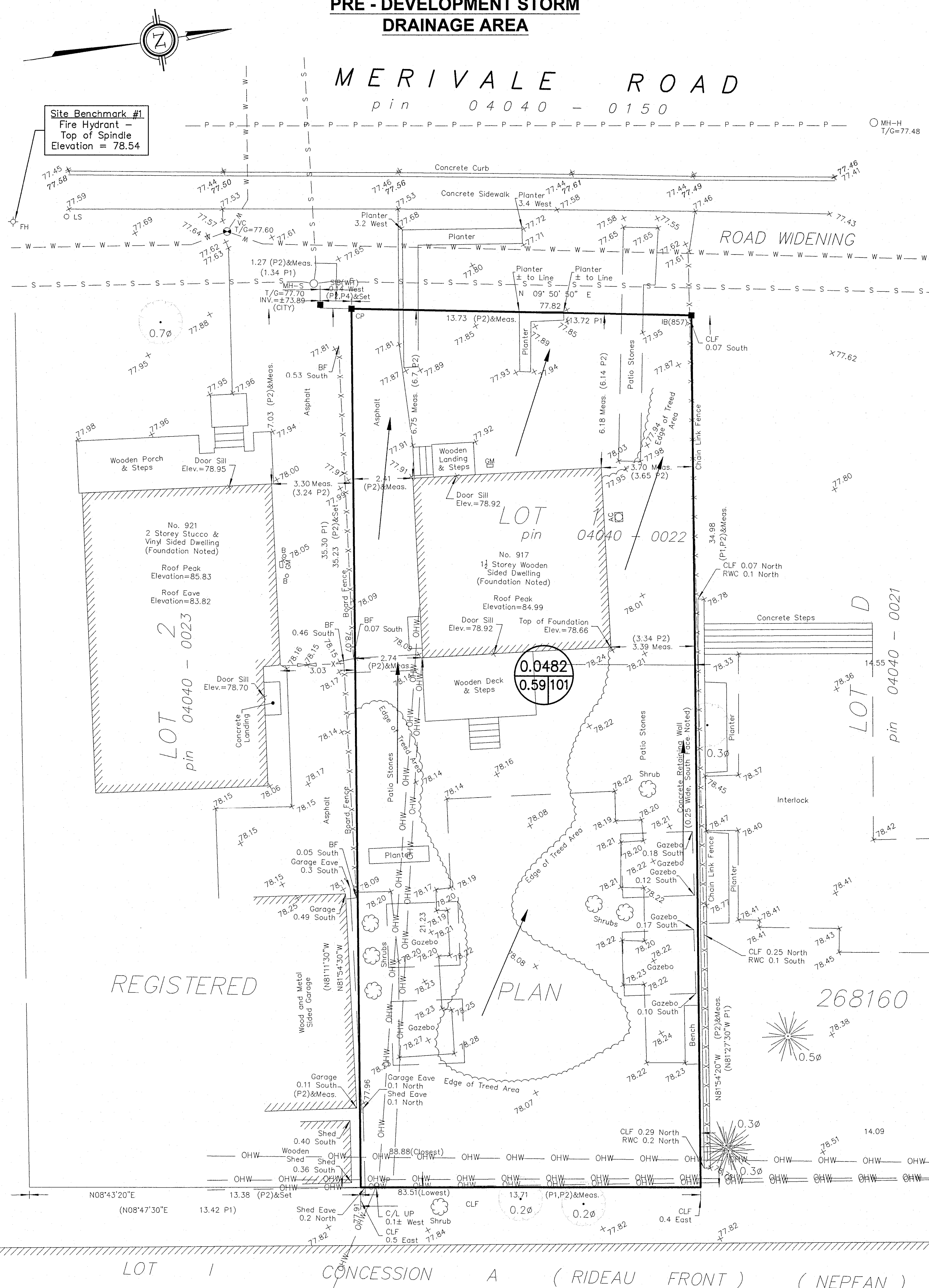


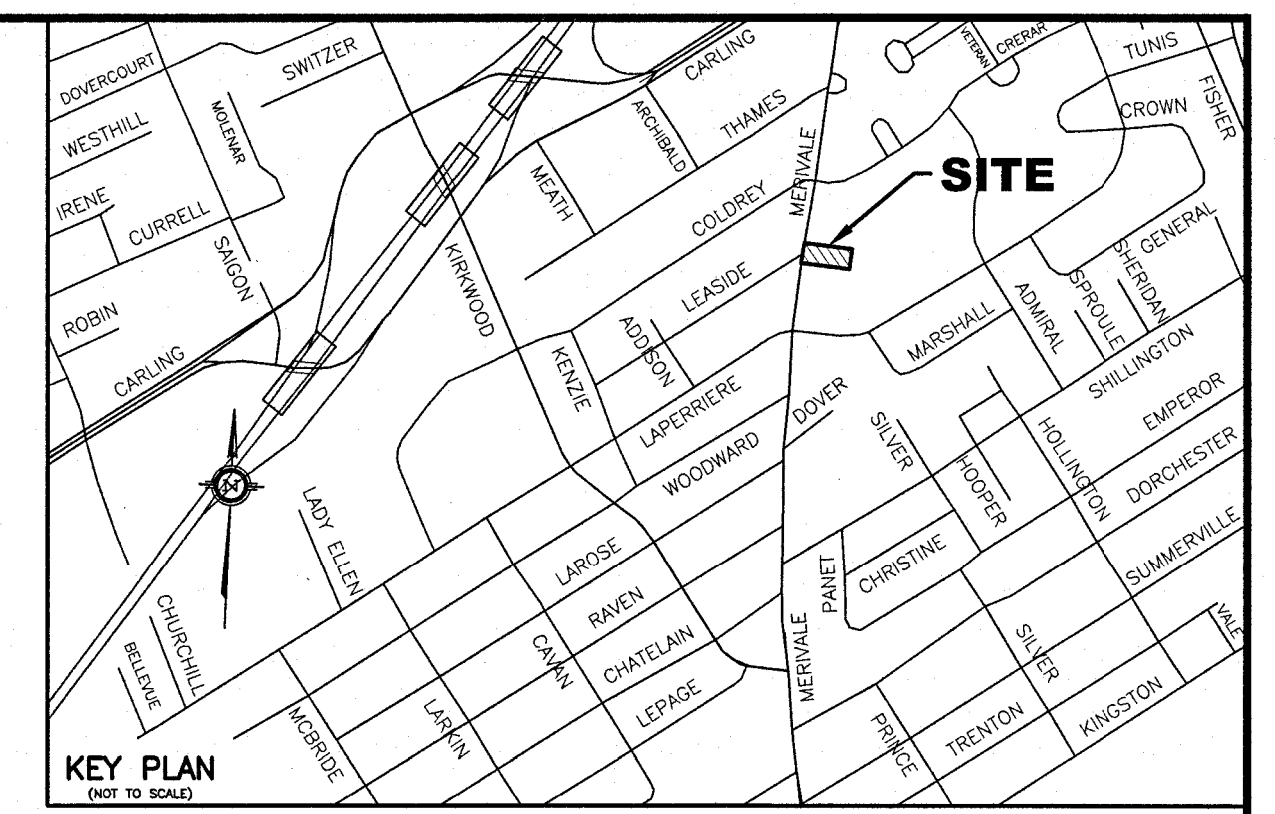
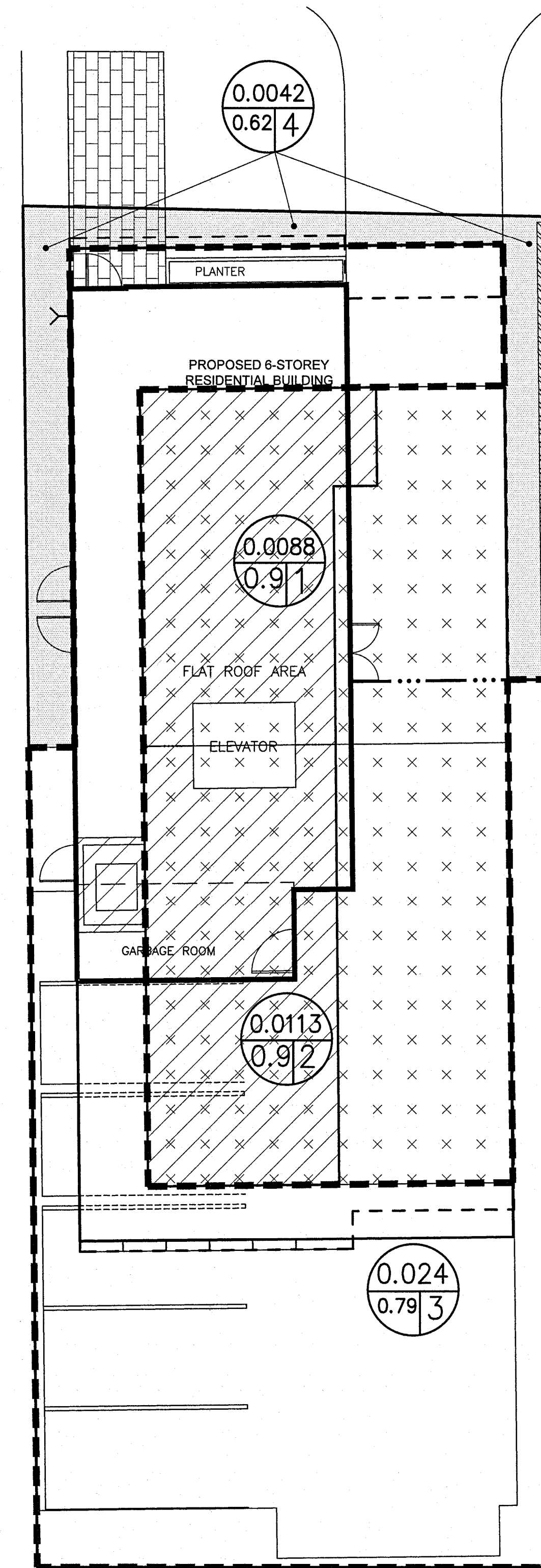
PRE - DEVELOPMENT STORM DRAINAGE AREA

MERIVALE ROAD
pin 04040 - 0150



POST DEVELOPMENT STORM DRAINAGE AREA

MERIVALE ROAD

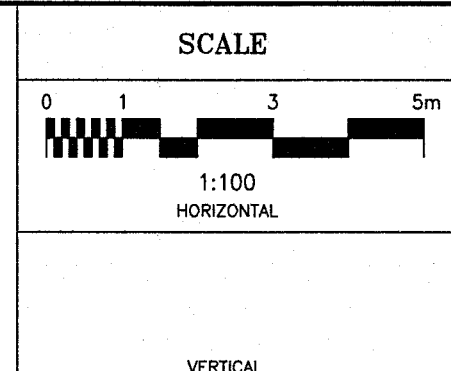
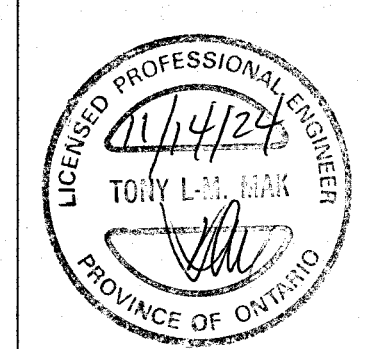


- LEGEND**
- RD#1 PROPOSED ROOF DRAIN NUMBER AND LOCATION
 - SC PROPOSED ROOF SCUPPER LOCATION
 - PROPOSED HIGH RIDGE LINE
 - (0.03) DRAINAGE AREA IN HECTARES
 - (0.91) DRAINAGE NODE NUMBER
 - COEFFICIENT OF RUNOFF
 - UN-CONTROLLED DRAINAGE AREA
 - CONTROLLED DRAINAGE AREA
 - DENOTES LIMIT OF CONTROLLED DRAINAGE AREA

- NOTES**
- NODE #1 AND NODE #2 REPRESENTS BUILDING ROOF AREA (SWM CONTROLLED AREA) AND NODE #3 REPRESENTS CONTROLLED SITE DRAINAGE AREA
 - NODE #4 REPRESENTS UNCONTROLLED DRAINAGE AREA
 - NODE #101 REPRESENTS PRE-DEVELOPMENT DATA.

File No: D07-12-24-0067

No.	REVISION	DATE	BY
1	ISSUED FOR SITE PLAN APPLICATION - 2ND SUBMISSION	11/05/24	TLM



DESIGN	T.L.M.
CHECKED	T.L.M.
DRAWN BY	P.M.
CHECKED	T.L.M.
APPROVED	T.L.M.

PROJECT
917 MERIVALE ROAD
LOT 1
REGISTERED PLAN 268160
CITY OF OTTAWA

DRAWING TITLE
STORM DRAINAGE AREA PLAN

T.L. MAK ENGINEERING CONSULTANTS LTD.
CONSULTING ENGINEERS

PROJECT No. **823-102** DATE **JULY 2024** DRAWING No. **D-1**