

Copyright Reserved

The Contractor shall verify and be responsible for all dimensions. DO NOT scale the drawing - any errors or omissions shall be reported to Stantec without delay.
The Copyrights to all designs and drawings are the property of Stantec. Reproduction or use for any purpose other than that authorized by Stantec is forbidden.

Legend

- EXISTING WATERMAIN
- EXISTING VALVE AND VALVE BOX
- EXISTING FIRE HYDRANT
- EXISTING SANITARY MH AND SEWER
- EXISTING STORM MH AND SEWER
- EXISTING CATCHBASIN
- EXISTING CABLE
- EXISTING BELL
- EXISTING TELES
- EXISTING TRAFFIC
- EXISTING HYDRO
- EXISTING STREETLIGHT
- EXISTING GAS MAIN
- REMOVAL ITEMS
- ASPHALT/CONCRETE/VEGETATION TO BE REMOVED
- EXISTING SEWERS TO BE REMOVED

NOTES:

1. REFER TO LANDSCAPE PLAN FOR TREE REMOVALS.
2. REFER TO SIGNAGE PLAN PREPARED BY OTHERS FOR SIGNAGE RELOCATIONS.
3. CONTRACTOR TO LOCATE EXISTING SERVICES AND ANY CONFLICTS WITH EXISTING SERVICES MUST BE REPORTED TO THE ENGINEER PRIOR TO CONTINUING WITH CONSTRUCTION.

Notes

1. PLAN OF SURVEY BY STANTEC GEOMATICS, (AUG 2023) PROJECT # 161614686-314

Rev	Issued For	By	Appd.	Date
2	ISSUED FOR REVIEW	JP	PM	24.09.13
1	ISSUED FOR REVIEW	JP	PM	24.05.19

Revision

Rev	Issued For	By	Appd.	Date
1	ISSUED FOR REVIEW	JP	PM	24.05.19

File Name: 160401789-D8.dwg

Rev	Issued For	By	Appd.	Date
1	ISSUED FOR REVIEW	JP	PM	24.05.13

Permit-Seal

Rev	Issued For	By	Appd.	Date
1	ISSUED FOR REVIEW	JP	PM	24.05.13



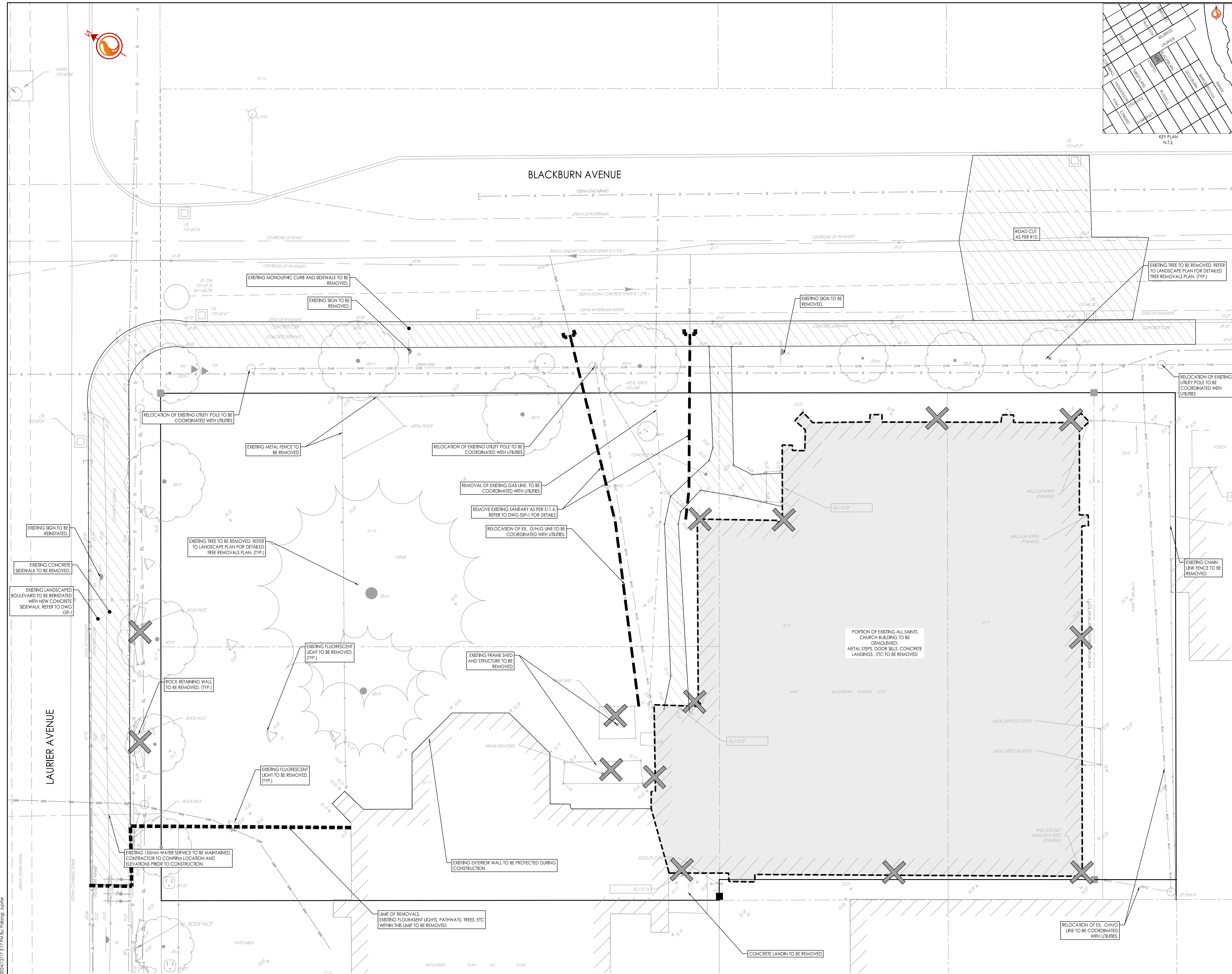
Client/Project
WINDMILL DEVELOPMENT GROUP LTD.

THE EVERGREEN ON BLACKBURN

Ottawa, ON

Title
EXISTING CONDITIONS & REMOVALS PLAN

Project No.	Scale	
160401789	0 1 3 5m 1:100	
Drawing No.	Sheet	Revision
EX-1	2 of 7	2



V:\Projects\160401789-Design\Drawings\Detailed\Design\160401789-D8.dwg
 2024/12/17 2:17 PM by: [Name], [Title]
 ORIGINAL SHEET - ARCH D

D07-12-24-0132