

Refer to Grading Plan for Grading

CODE	QUANTITY	BOTANICAL NAME	COMMON NAME	B&B SPECIMEN	NATIVE	SPREAD
AR	5	Acer rubrum	Red Maple	50mm cal	YES	12M
AS	1	Acer saccharum	Sugar Maple	50mm cal	YES	15M
CO	1	Celtis occidentalis	Common Hackberry	50mm cal	YES	18M
QM	3	Quercus macrocarpa	Bur Oak	50mm cal	YES	20M
QR	3	Quercus rubra	Red Oak	50mm cal	YES	15M
TOTALS	13	0				

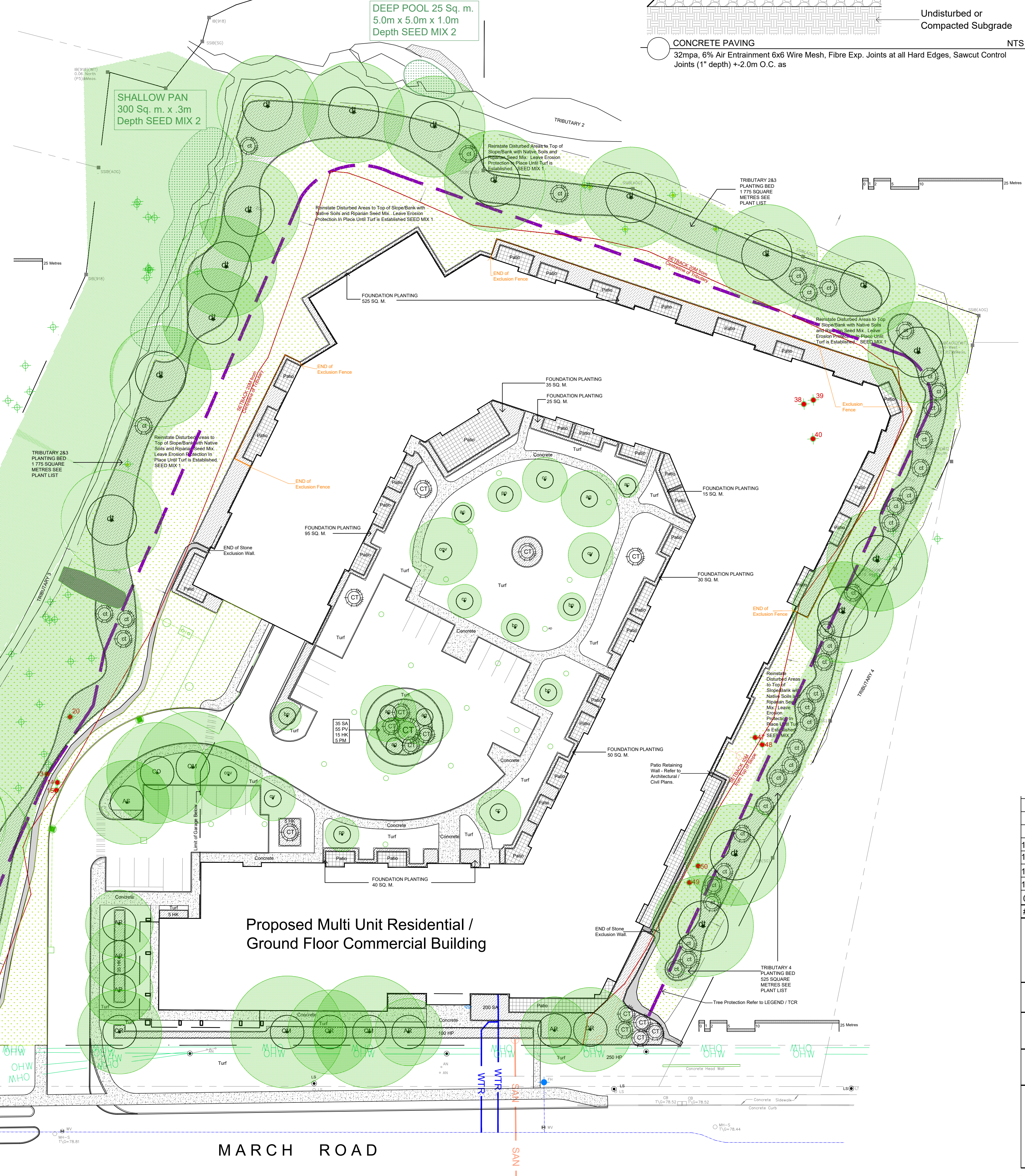
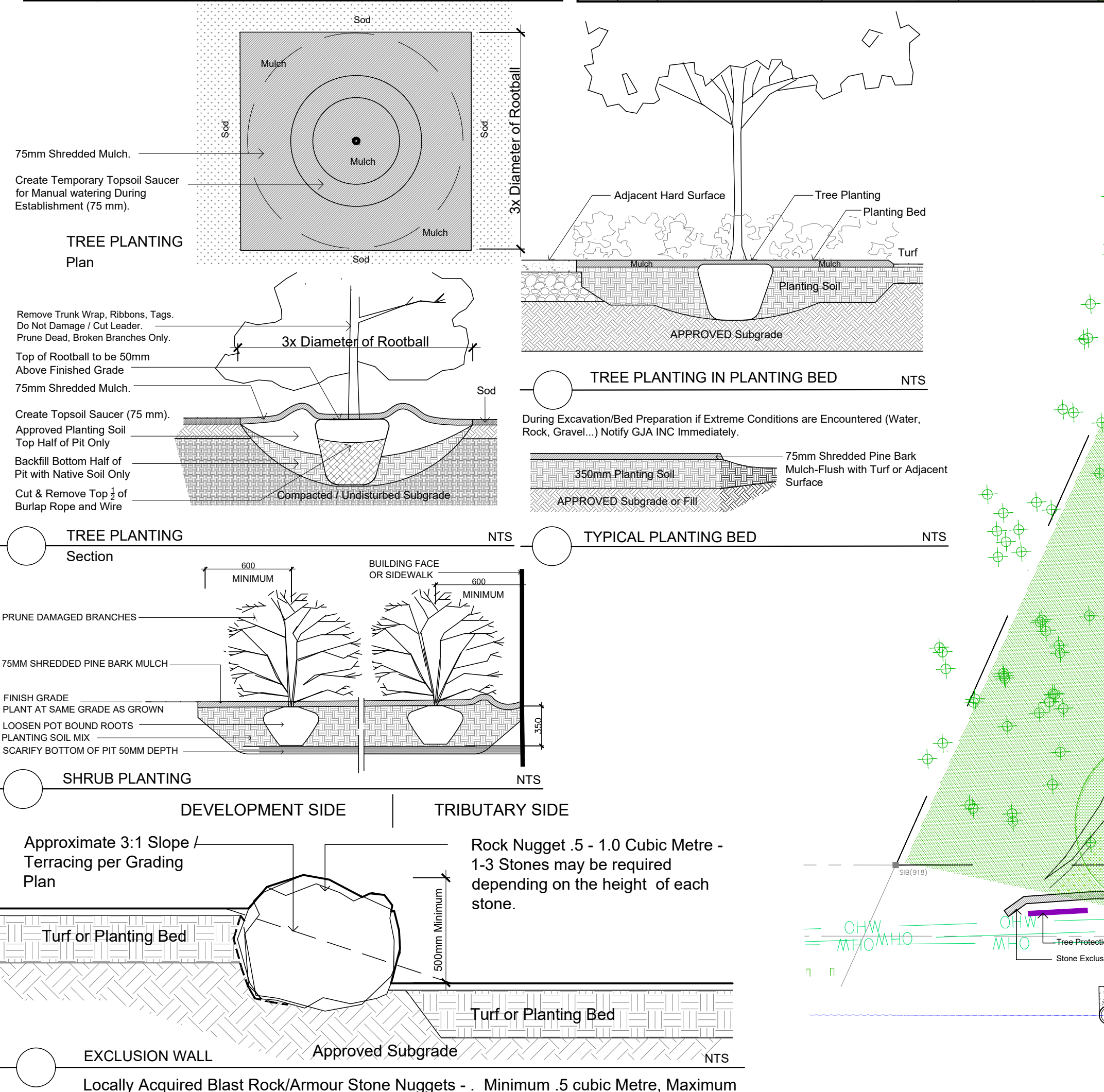
CODE	QUANTITY	PUBLIC	BOTANICAL NAME	COMMON NAME	B&B SPECIMEN	NATIVE	SPREAD
ag	4	0	Aesculus glabra	Ohio Buckeye	50mm cal	YES	10M
ac	2	0	Amelanchier canadensis	Tree Serviceberry	50mm cal	YES	4M
bc	4	0	Betula populifolia	Gray Birch	50mm cal	YES	5M
cc	2	0	Carpinus caroliniana	Hornbeam Bluebeech	50mm cal	YES	8M
cv	2	0	Carya ovata	Shagbark Hickory	50mm cal	YES	12M
ov	1	0	Ostrya virginiana	Hophornbeam Ironwood	50mm cal	YES	8M
pp	2	0	Prunus pensylvanica	Pin Cherry	50mm cal	YES	6M
TOTALS	17	0					

QUANTITY	QUANTITY	Botanical Name	Common Name	Size	Condition
1	0	Acer pennsylvanicum	Striped Maple	40cm cal	Spring Ball
2	1	Acer rubrum	Red Maple	40cm cal	Spring Ball
3	1	Acer saccharum	Sugar Maple	40cm cal	Spring Ball
1	1	Betula papyrifera	Paper Birch	40cm cal	Spring Ball
1	0	Carpinus caroliniana	Hornbeam Bluebeech	40cm cal	Spring Ball
1	0	Carya ovata	Shagbark Hickory	40cm cal	Spring Ball
1	0	Celtis occidentalis	Common Hackberry	40cm cal	Spring Ball
1	0	Ostrya virginiana	Hophornbeam Ironwood	40cm cal	Spring Ball
1	0	Prunus pensylvanica	Pin Cherry	40cm cal	Spring Ball
1	0	Pinus strobus	White Pine	40cm cal	Spring Ball
1	0	Quercus bicolor	Swamp White Oak	40cm cal	Spring Ball
1	1	Quercus macrocarpa	Bur Oak	40cm cal	Spring Ball
1	1	Quercus rubra	Red Oak	40cm cal	Spring Ball
15	5	20			

Outer Perimeter	Interior Podium	Botanical Name	Common Name	Size	Condition	NATIVE
TBD	TBD	Arctostaphylos Uva Ursi	Bearberry	30cm spr	Pot	Pot
TBD	TBD	Cornus sericea 'Flaviramea'	Yellowtwig Dogwood	50cm	Pot	Pot
TBD	TBD	Hydrangea arborescens 'Invincible Spirit'	Invincible Spirit Hydrangea	50cm	Pot	Pot
TBD	TBD	Hypericum kalmianum	Kalm St. John's Wort	30cm	Pot	YES
TBD	TBD	Hypericum proflifum	Shrubby St. John's Wort	40cm	Pot	YES
TBD	TBD	Potentilla fruticosa 'Abbotswood'	Abbotswood Potentilla	30cm	Pot	YES
TBD	TBD	Physocarpus opulifolius 'Nanus'	Dwarf Ninebark	40cm	Pot	YES
TBD	TBD	Ribes aureum	Flowering Currant	50cm	Pot	YES
TBD	TBD	Rosa palustris	Swamp Rose	50cm	Pot	YES
TBD	TBD	Symphoricarpos albus	Snowberry	50cm	Pot	YES
TBD	TBD	Spiraea alba	Eastern Red Cedar	1.0m HT.	POT	POT
TBD	TBD	Spiraea bumalda 'Dart's Red'	Dart's Red Spirea	30cm	Pot	YES
TBD	TBD	Juniperus chinensis 'Ontario Green'	Ontario Green Juniper	30cm spr	Pot	YES
TBD	TBD	Pinus mugo var. pumilio	Mughjo Pine	30cm spr	Pot	YES
TBD	TBD	Taxus cuspidata 'Monlo'	Emerald Spreader Yew	30cm spr	Pot	YES
750	450	TOTALS				

QUANTITY	QUANTITY	Botanical Name	Common Name	Size	Condition
100	25	125	Arctostaphylos uva ursi	Bearberry	30cm Pot
225	75	300	Amelanchier canadensis	Serviceberry	30cm HT.
75	25	100	Aronia melanocarpa	Chokeberry	30cm HT.
35	15	50	Cornus alternifolia	Pagoda Dogwood	30cm HT.
115	50	165	Cornus racemosa	Gray Dogwood	30cm HT.
250	75	325	Cornus sericea	Red Osier Dogwood	30cm HT.
200	75	275	Hypericum kalmianum	Kalm St. John's Wort	30cm HT.
150	75	225	Hypericum proflifum	Shrubby St. John's Wort	30cm HT.
35	15	50	Panicum virgatum	Switch Grass	9cm Pot
75	25	100	Physocarpus opulifolius	Common Ninebark	30cm HT.
350	75	425	Shagbark Hickory	Shagbark Hickory	30cm HT.
75	25	100	Ribes aureum	Flowering Currant	30cm HT.
100	25	125	Rosa palustris	Swamp Rose	30cm HT.
125	50	175	Rubus odoratus	Flowering Raspberry	30cm HT.
275	75	350	Spiraea alba	Meadowsweet	30cm HT.
250	75	325	Symphoricarpos albus	Snowberry	30cm HT.
125	25	150	Viburnum lentago	Nannyberry	30cm HT.
2845	895	3740			

Code	Qty.	Botanical Name	Common Name	Size	Condition	NATIVE
HK	60	Hypericum kalmianum	Kalm St. John's Wort	30cm	Pot	YES
HP	100	Hypericum proflifum	Shrubby St. John's Wort	40cm	Pot	YES
SA	235	Spiraea alba	Meadowsweet	60cm	Pot	YES
PM	5	Pinus mugo var. pumilio	Mughjo Pine	30cm spr	Pot	YES
PV	55	Panicum virgatum	Switch Grass	9cm Pot	Pot	YES



Drawing Remains the Property of Copyright Reserved by Gino J. Aiello Landscape Architect. Do Not Use or Reproduce Without Approval of Gino J. Aiello. NOT TO BE USED FOR CONSTRUCTION UNLESS INDICATED BY REVISION: FOR LANDSCAPE CONSTRUCTION.

Contractor is Responsible for Verification of Site Conditions (Trees, Slopes, etc.) and for Compliance with all applicable codes and standards. The Contractor shall be responsible for providing and installing all materials and work to be maintained until final acceptance. (MOWING TURF, WEEDING BEDS, WATERING TURF & PLANTS) & INCLUDE 1 YEAR WARRANTY FROM DATE OF FINAL ACCEPTANCE [PROVIDE WATERING OF ALL PLANT MATERIAL AS REQUIRED FOR PROPER ESTABLISHMENT, UNTIL END OF WARRANTY PERIOD | REFER TO CIVIL ENGINEER'S DRAWING FOR ELEVATIONS / GRADING]

The Landscape Plan is to be read in conjunction with the grading, servicing, site and survey plan [Bare root material to be planted in season only | All plant material locations to be staked on site by the landscaper and checked by the landscape architect prior to planting | All trees to be preserved on or directly adjacent to the site will be protected | Plant material are to be installed a minimum of 3.0m away from any part of any hydro transformer, 3.0m corridor between a fire hydrant and the curb, a 2.5m radius beside or behind a fire hydrant, 2.0m from any servicing utility line or structure]

REFER TO TCR

- Existing Tree to Remain
- Existing Tree to Remove
- Tree Protection

LANDSCAPE PLAN LEGEND

- Coniferous Tree symbol 3.0m diameter
- Deciduous Tree symbol 6.0m diameter
- 40 Year Outlook according to Dirr
- Planting Bed
- Shrub Planting Bed
- Native Soil / SEED MIX 1
- SEED MIX 2
- Pedestrian Paving
- Ertec Exclusion Fence per EIS
- Exclusion Wall
- Concrete
- Retaining Wall
- Bike Rack Anchor to Concrete
- Fire Hydrant
- FD Siamese Connection
- Light Standard

BELOW GRADE SERVICES REFER TO CIVIL/CUP

- WTR U/G Water Service
- STM U/G Storm Service
- SAN U/G Sanitary Service
- U/G Gas Service
- BC U/G Te/Co Service
- H U/G Hydro Service
- O/H Hydro Service

#	Revision	Date
1.7	per SP 1.7	2024 04 12
1.5	per SP 1.6	2023 12 22
1.4	per SP 1.4	2023 07 28
1.0	FIRST SUBMISSION SPC 1.0	2023 03 29
0	REVIEW/COORDINATION	2023 03 21

LÉPINE

555 LEGGET DRIVE, TOWER A, SUITE 206
OTTAWA ONTARIO, K2K 2X3
Phone : 613 591 9090 | Fax: 613 591 9095

GJA INC.
GINO J. AIELLO | LANDSCAPE ARCHITECT
GJALANDSCAPE.COM | 613 293 9150 | GJALANDSCAPE.COM

910 MARCH ROAD MIXED USE DEVELOPMENT

Landscape Plan

Scale: 1:400

City of Ottawa Plan No. #18358