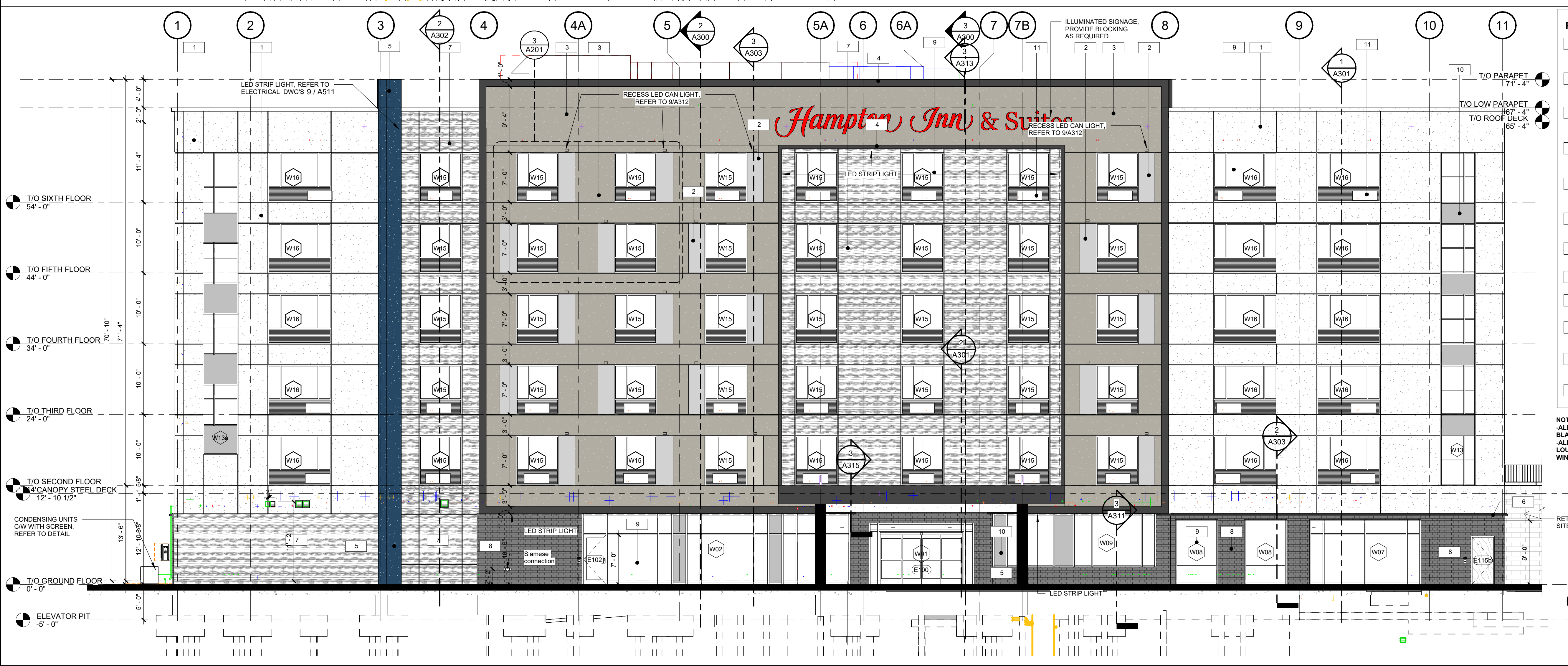
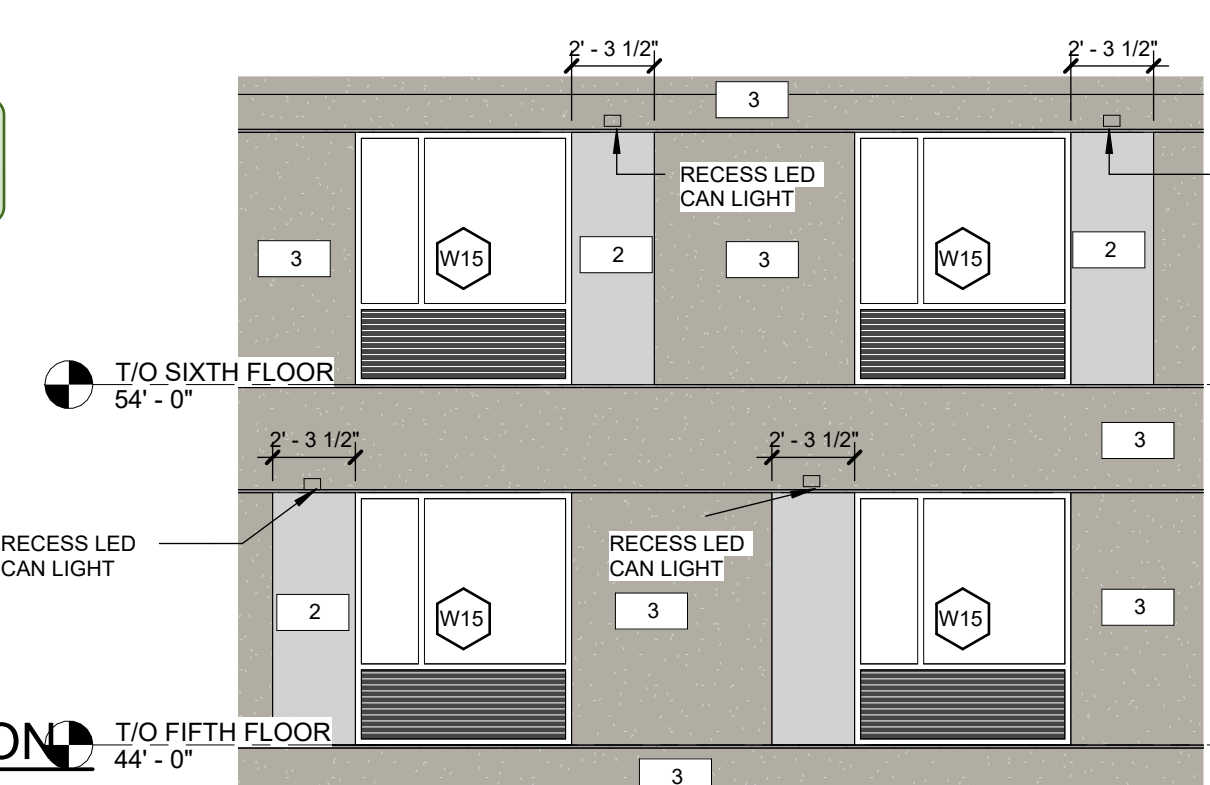


**4** Axonometric  
A201

**APPROVED**  
By Kersten Nitsche at 3:33 pm, Dec 16, 2024

*Kersten Nitsche*

**KERSTEN NITSCHKE, MCIP RPP**  
**MANAGER (A), DEVELOPMENT REVIEW WEST**  
**PLANNING, DEVELOPMENT AND BUILDING SERVICES**  
**DEPARTMENT, CITY OF OTTAWA**



- FINISH LEGEND**
- 1 EIFS-1 EXTERIOR INSULATION FINISH SYSTEM (EIFS) COLOUR 1 - DRYVIT 104 COVER SKY BY DRYVIT OR APPROVED EQUAL
  - 2 EIFS-2 EXTERIOR INSULATION FINISH SYSTEM (EIFS) COLOUR 2 - DRYVIT TERRAZZO 208 EVEREST BY DRYVIT OR APPROVED EQUAL
  - 3 EIFS-3 EXTERIOR INSULATION FINISH SYSTEM (EIFS) COLOUR 3 - DRYVIT TERRAZZO 200 GIBRALTER BY DRYVIT OR APPROVED EQUAL
  - 4 EIFS-4 EXTERIOR INSULATION FINISH SYSTEM (EIFS) COLOUR 4 - DRYVIT TERRAZZO 206 VESUVIUS BY DRYVIT OR APPROVED EQUAL
  - 5 EXTERIOR INSULATION FINISH SYSTEM (EIFS) COLOUR: BENJAMIN MOORE, CHAMPION COBALT, 2061-20
  - 6 PRECAST CONCRETE SILL - TYPICAL AT TOP OF BRICK - COLOUR: BLACK
  - 7 ACM PANEL COLOUR: WOOD - DEEP WALNUT 18-2768
  - 8 BRICK VENEER: BRAMPTON BRICK JUMBO SIZE, COLOUR: RAVEN PREMIER PLUS
  - 9 CLEAR GLASS
  - 10 SPANDREL GLASS 6mm CLEAR HEAT STRENGTHENED GLASS, BACK PAINTED (#2) WITH OPACI COAT 300, COLOR #820 HARMONY GRAY
  - 11 PTAC LOUVRES - COLOUR BLACK
  - 12 THERMALLY BROKEN WINDOW MULLION - BLACK

**NOTE:**  
ALL EXTERIOR WINDOW FRAME AND MULLIONS TO BE COLOUR BLACK  
ALL LOUVRES COLOUR TO MATCH ADJACENT SURFACE COLOUR  
LOUVRES COLOUR IN A WINDOW TO BE COLOUR BLACK TO MATCH WINDOW FRAME

RETAINING WALL, REFER TO SITE PLAN AND STRUCT. DWGS

**2** EAST ELEVATION  
A201  
1/8" = 1'-0"

NO.	ISSUED	DATE
1	SITE PLAN APPROVAL	2022-01-19
2	25% BRAND REVIEW	2024-05-24
3	60% BRAND /CLIENT REVIEW	2024-06-28
4	50% DD SUBMITTAL	2024-08-23
5	100% BRAND SUBMITTAL	2024-10-03
6	BUILDING PERMIT	2024-11-06
7	BUILDING TENDER	2024-11-27

DO NOT SCALE DRAWINGS. USE ONLY DRAWINGS MARKED "ISSUED FOR CONSTRUCTION". VERIFY CONFIGURATIONS AND DIMENSIONS ON SITE BEFORE BEGINNING WORK. NOTIFY ARCHITECT IMMEDIATELY OF ANY ERRORS, OMISSIONS OR DISCREPANCIES.

CHAMBERLAIN ARCHITECT SERVICES LIMITED AND CHAMBERLAIN CONSTRUCTION SERVICES LIMITED HAVE SIMILAR OWNERSHIP.

CHAMBERLAIN ARCHITECT SERVICES LIMITED HAS COPYRIGHT. CONSTRUCTING A SUBSTANTIALLY SIMILAR BUILDING WITHOUT PERMISSION MAY INFRINGE THE COPYRIGHT OWNERS RIGHTS. MAKING MINOR CHANGES TO PLANS DOES NOT NECESSARILY AVOID COPYRIGHT INFRINGEMENT. INNOCENT INFRINGEMENT IS NOT A DEFENSE TO COPYRIGHT INFRINGEMENT. © SEAL



**KANATA HAMPTON INN & SUITES**

PROTOTYPE V7.0  
1305 MARITIME WAY,  
KANATA, ON

**EXTERIOR ELEVATIONS (NORTH & WEST)**

START DATE	16 SEPT 2019
DRAWN BY	YW
CHECKED BY	HF
SCALE	As indicated
PROJECT NO.	117079
DRAWING	

**A201**

NO.	ISSUED	DATE
1	SITE PLAN APPROVAL	2022-01-19
2	25% BRAND REVIEW	2024-05-24
3	60% BRAND /CLIENT REVIEW	2024-06-28
4	50% DD SUBMITTAL	2024-08-23
5	100% BRAND SUBMITTAL	2024-10-03
6	BUILDING PERMIT	2024-11-06
7	BUILDING TENDER	2024-11-27

DO NOT SCALE DRAWINGS. USE ONLY DRAWINGS  
MARKED "ISSUED FOR CONSTRUCTION". VERIFY  
CONFIGURATIONS AND DIMENSIONS ON SITE BEFORE  
BEGINNING WORK. NOTIFY ARCHITECT IMMEDIATELY  
OF ANY ERRORS, OMISSIONS OR DISCREPANCIES.

CHAMBERLAIN ARCHITECT SERVICES LIMITED AND  
CHAMBERLAIN CONSTRUCTION SERVICES LIMITED  
HAVE SIMILAR OWNERSHIP.

CHAMBERLAIN ARCHITECT SERVICES LIMITED  
HAS COPYRIGHT. CONSTRUCTING A SUBSTANTIALLY  
SIMILAR BUILDING WITHOUT PERMISSION MAY  
INFRINGE THE COPYRIGHT OWNERS RIGHTS.  
MAKING MINOR CHANGES TO PLANS DOES NOT  
NECESSARILY AVOID COPYRIGHT INFRINGEMENT.  
INNOCENT INFRINGEMENT IS NOT A DEFENSE TO  
COPYRIGHT INFRINGEMENT. ©  
SEAL



## KANATA HAMPTON INN & SUITES

PROTOTYPE V7.0  
1305 MARITIME WAY,  
KANATA, ON

SHEET NAME

## EXTERIOR ELEVATIONS (SOUTH & EAST)

START DATE 16 SEPT 2019

DRAWN BY YW

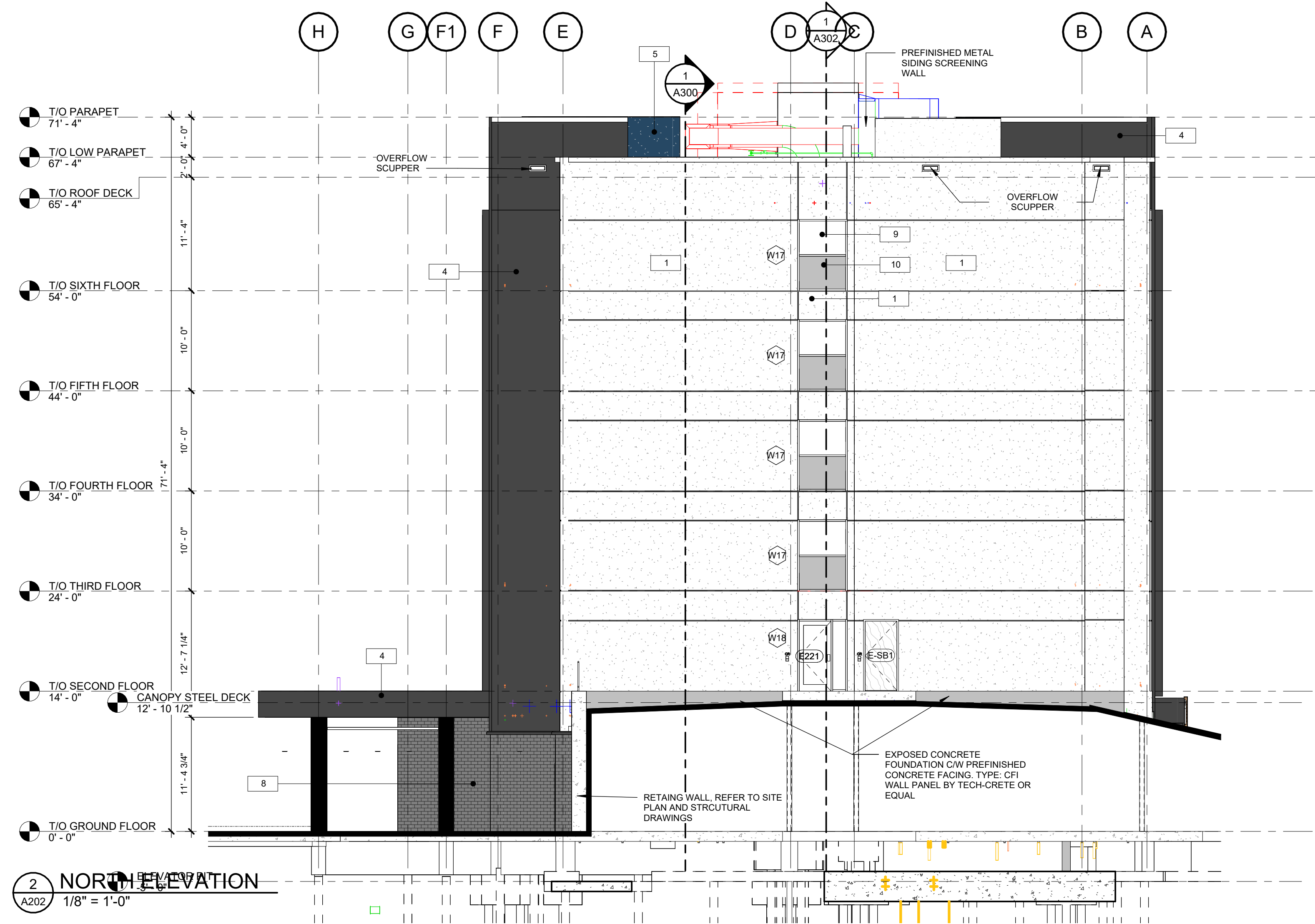
CHECKED BY HF

SCALE As indicated

PROJECT NO. 117079

DRAWING

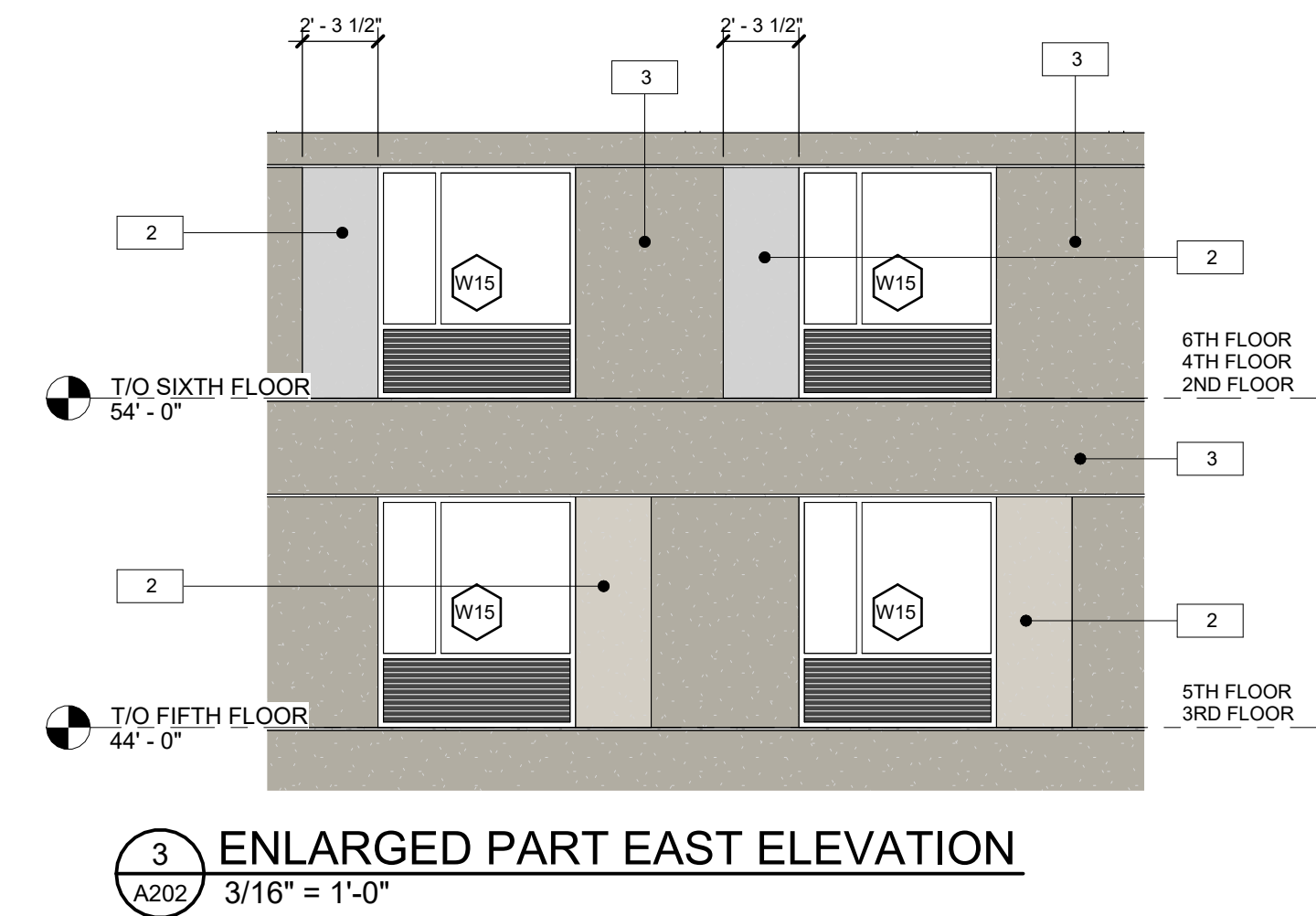
# A202



**APPROVED**  
By Kersten Nitsche at 3:33 pm, Dec 16, 2024

*Kersten Nitsche*

**KERSTEN NITSCHKE, MCIP RPP  
MANAGER (A), DEVELOPMENT REVIEW WEST  
PLANNING, DEVELOPMENT AND BUILDING SERVICES  
DEPARTMENT, CITY OF OTTAWA**



### FINISH LEGEND

- EIFS-1 EXTERIOR INSULATION FINISH SYSTEM (EIFS) COLOUR 1 - DRYVIT 104 DOVER SKY BY DRYVIT OR APPROVED EQUAL
- EIFS-2 EXTERIOR INSULATION FINISH SYSTEM (EIFS) COLOUR 2 - DRYVIT TERRANEO 208 EVEREST BY DRYVIT OR APPROVED EQUAL
- EIFS-3 EXTERIOR INSULATION FINISH SYSTEM (EIFS) COLOUR 3 - DRYVIT TERRANEO 200 GIBRALTER BY DRYVIT OR APPROVED EQUAL
- EIFS-4 EXTERIOR INSULATION FINISH SYSTEM (EIFS) COLOUR 4 - DRYVIT TERRANEO 206 VESUVIUS BY DRYVIT OR APPROVED EQUAL
- EXTERIOR INSULATION FINISH SYSTEM (EIFS) COLOUR: BENJAMIN MOORE, CHAMPION COBALT, 2061-20
- PRECAST CONCRETE SILL - TYPICAL AT TOP OF BRICK - COLOUR: BLACK
- ACM PANEL COLOUR: WOOD - DEEP WALNUT 18-2768
- BRICK VENEER: BRAMPTON BRICK JUMBO SIZE, COLOUR: RAVEN PREMIER PLUS
- CLEAR GLASS
- SPANDREL GLASS 6mm CLEAR HEAT STRENGTHENED GLASS, BACK PAINTED (#2) WITH OPACI COAT 300, COLOR #820 HARMONY GRAY
- PTAC LOUVRES - COLOUR BLACK
- THERMALLY BROKEN WINDOW MULLION - BLACK

NOTE:  
ALL EXTERIOR WINDOW FRAME AND MULLIONS TO BE COLOUR BLACK  
ALL LOUVRES COLOUR TO MATCH ADJACENT SURFACE COLOUR  
LOUVRES COLOUR IN A WINDOW TO BE COLOUR BLACK TO MATCH WINDOW FRAME