



P.O. Box 13593, STN. KANATA, OTTAWA, ON K2K 1X6
TELEPHONE: (613) 850-2475
WEBSITE: WWW.IFSASSOCIATES.CA

URBAN FORESTRY & FOREST MANAGEMENT CONSULTING

December 9, 2024

Marietta Ruhland, Principal, BLA, OALA
RUHLAND & ASSOCIATES LTD.
Suite 200 - 1750 Courtwood Crescent
Ottawa, ON
K2C 2B5

RE: TREE CONSERVATION REPORT – 700 SPRING VALLEY DRIVE, OTTAWA

This Tree Conservation Report (TCR) was prepared by IFS Associates Inc. (IFS) in support of a site plan application for 700 Spring Valley Drive in Ottawa. The need for this report is related to trees protected under the City of Ottawa’s Tree Protection By-law (By-law No. 2020-340). The construction of a new school is proposed for the site.

Under the Tree Protection By-law, a TCR is required for all plans of subdivision, site plan control applications, common elements condominium applications, and vacant land condominium applications where there is a tree of 10 cm in diameter at breast height (DBH) or greater on a site and/or if there is a tree on an adjacent site that has a critical root zone (CRZ) extending onto a development site. Trees of any size on adjacent City lands must also be documented in a TCR. A “tree” is defined in the By-law as any species of woody perennial plant, including its root system, which has reached or can reach a minimum height of at least 450 cm at physiological maturity. The CRZ is calculated as DBH x 10 cm.

The approval of this TCR by the City of Ottawa and the issuing of a permit by them authorize the removal of approved trees. **Importantly, although this report may be used to support the application for a city tree removal permit, it does not by itself constitute permission to remove trees or begin site clearing activities. No such work should occur before a tree removal permit is issued by the City’s General Manager authorizing the injury or destruction of a tree in accordance with the by-law.**

The inventory in this report details the assessment of all individual trees on the subject and adjacent private property, including trees on nearby City of Ottawa property. Any endangered tree species were identified as well. Field work for this revised report was completed in June 2024.

TREE SPECIES, CONDITION, SIZE AND OWNERSHIP STATUS

The table on pages 4 through 16 of this report details the species, condition, size (diameter) and ownership status of the individual trees on and adjacent to the subject property. Each of these trees is referenced by the numbers plotted on the aerial plan included in figure 1 on page 17 of this report.

METHODOLOGY

The tree inventory was conducted in June 2024, by systematically traveling through the subject property and taking note of any tree which had a DBH of 10cm or greater. The same was done for 10m-wide swath on surrounding properties.

PROVINCIAL REGULATIONS

Certain provincial regulations are applicable to trees on private property. In particular, the Endangered Species Act – ESA (2007) mandates that tree species on the Species at Risk in Ontario (SARO) list be identified. Butternut (*Juglans cinerea*) and black ash (*Fraxinus nigra*) are present in Eastern Ontario, and both are listed as threatened on the SARO. Because of this these species are protected from harm. One butternut was found on subject property (See figure 2 on page 18). No black ash trees were located on or within the 50m of the work area.

If you are planning to undertake an activity that may affect the habitat within 50m of a butternut, you may be eligible to follow the requirements set out in section 23.7 of Ontario Regulation 242/08 under the ESA, or you may be required to seek an authorization under the ESA (e.g. a permit). If you are eligible to kill, harm or remove butternut under section 23.7 of the regulation, you must submit a Butternut Health Expert's (BHE) report.

A BHE was submitted to the Ministry of Environment, Conservation and Parks (MECP) in November 2024. Following submittal, a 30-day wait period must be allowed prior to registering to kill, harm, or remove a butternut tree. During this 30-day period, no butternut tree (of any category) may be killed, harmed, or removed, as the MECP may contact you for an opportunity to examine the trees.

FEDERAL REGULATIONS

Federal regulations can be applicable to trees on private property. In particular, between April and August of each year the Migratory Bird Convention Act (1994) requires bird nest surveys be performed by a suitably trained person no more than five (5) days before trees or other similar nesting habitat are removed.

TREE PROTECTION AND PRESERVATION MEASURES

Protection measures intended to mitigate damage during construction will be applied to all the trees to be preserved. The following measures are the minimum required by the City of Ottawa to ensure tree survival during and following construction:

1. Erect a fence as close as possible to the critical root zone (CRZ) of trees.
2. Do not place any material or equipment within the CRZ of the tree.
3. Do not attach any signs, notices or posters to any tree.
4. Do not raise or lower the existing grade within the CRZ without approval.
5. Tunnel or bore when digging within the CRZ of a tree.
6. Do not damage the root system, trunk or branches of any tree.

7. Ensure that exhaust fumes from all equipment are NOT directed towards any tree's crown.

Please do not hesitate to contact me with any questions concerning this report.

Yours,



Andrew K. Boyd, B.Sc.F, R.P.F. (#1828)
Certified Arborist #ON-0496A
Consulting Urban Forester

TABLE 1: BUTTERNUT TREE

ID	UTM NAD83	SPECIES	DBH (cm)	Category	COMMENTS	OWNERSHIP
1	18 T 459832 5030558	Butternut	11	11	Single Stem.	Proponent

TABLE 2: TREE LOCATONS

TREE ID	UTM NAD83	SPECIES	AVG DBH (cm)	CRITICAL ROOT ZONE (m)	HEALTH	COMMENTS	OWNERSHIP	FATE
1	18 T 459745 5030451	Black Willow	17	1.7	Good	Multistem	Proponent	Removed
2	18 T 459753 5030462	Black Willow	18.5	1.85	Good	Multistem	Proponent	Removed
3	18 T 459744 5030467	Cottonwood	20	2	Good	Single Stem	Proponent	Removed
4	18 T 459762 5030461	Black Willow	17.29	1.7286	Good	Multistem	Proponent	Removed
5	18 T 459755 5030481	Cottonwood	26	2.6	Good	Single Stem	Proponent	Removed
6	18 T 459758 5030483	Cottonwood	25	2.5	Good	Single Stem	Proponent	Removed
7	18 T 459743 5030483	Black Willow	14	1.4	Good	Single Stem	Proponent	Removed
8	18 T 459775 5030464	Black Willow	15	1.5	Good	Multistem	Proponent	Removed
9	18 T 459781 5030487	Black Willow	30	3	Good	Single Stem	Proponent	Removed
10	18 T 459763 5030495	Cottonwood	25	2.5	Good	Single Stem	Proponent	Removed
11	18 T 459760 5030494	White Ash	10	1	Good	Single Stem	Proponent	Removed
12	18 T 459759 5030494	Cottonwood	22	2.2	Good	Single Stem	Proponent	Removed
13	18 T 459759 5030498	Black Willow	30	3	Good	Single Stem	Proponent	Removed
14	18 T 459747 5030513	Black Willow	16.5	1.65	Good	Multistem	Proponent	Removed
15	18 T 459749 5030523	Black Willow	19.5	1.95	Good	Multistem	Proponent	Removed
16	18 T 459746 5030530	Black Willow	10	1	Good	Single Stem	Proponent	Removed
17	18 T 459749 5030531	Cottonwood	15	1.5	Good	Single Stem	Proponent	Removed
18	18 T 459751 5030535	Black Willow	17	1.7	Good	Multistem	Proponent	Removed
19	18 T 459752 5030536	Black Willow	18	1.8	Good	Single Stem	Proponent	Removed
20	18 T 459751 5030538	Cottonwood	14	1.4	Good	Single Stem	Proponent	Removed
21	18 T 459745 5030540	Cottonwood	15	1.5	Good	Single Stem	Proponent	Removed
22	18 T 459745 5030539	Cottonwood	25	2.5	Good	Single Stem	Proponent	Removed
23	18 T 459748 5030546	Cottonwood	20	2	Good	Single Stem	Proponent	Removed
24	18 T 459748 5030549	White Pine	61	6.1	Poor	Top half dead. Single Stem	Proponent	Removed
25	18 T 459750 5030552	Black Willow	16	1.6	Good	Single Stem	Proponent	Removed
26	18 T 459763 5030554	Sugar Maple	12	1.2	Good	Single Stem	Proponent	Removed
27	18 T 459761 5030555	Manitoba Maple	15	1.5	Poor	Leaf dieback. Single Stem	Proponent	Removed

TREE ID	UTM NAD83	SPECIES	AVG DBH (cm)	CRITICAL ROOT ZONE (m)	HEALTH	COMMENTS	OWNERSHIP	FATE
28	18 T 459764 5030548	Sugar Maple	15	1.5	Good	Single Stem	Proponent	Removed
29	18 T 459765 5030545	Sugar Maple	13	1.3	Good	Single Stem	Proponent	Removed
30	18 T 459762 5030542	White Ash	75	7.5	Dead	No leaves. Single Stem	Proponent	Removed
31	18 T 459762 5030542	Black Willow	15	1.5	Good	Single Stem	Proponent	Removed
32	18 T 459754 5030531	Black Willow	20	2	Good	Single Stem	Proponent	Removed
33	18 T 459756 5030527	Cottonwood	15	1.5	Good	Single Stem	Proponent	Removed
34	18 T 459759 5030526	Black Willow	27	2.7	Good	Single Stem	Proponent	Removed
35	18 T 459759 5030527	Black Willow	25	2.5	Good	Single Stem	Proponent	Removed
36	18 T 459757 5030529	Black Willow	16	1.6	Good	Single Stem	Proponent	Removed
37	18 T 459757 5030528	Black Willow	12.33	1.2333	Good	Multistem	Proponent	Removed
38	18 T 459760 5030528	Cottonwood	17	1.7	Good	Single Stem	Proponent	Removed
39	18 T 459761 5030528	Cottonwood	14	1.4	Good	Single Stem	Proponent	Removed
40	18 T 459761 5030528	Cottonwood	27	2.7	Good	Single Stem	Proponent	Removed
41	18 T 459764 5030530	Black Willow	12	1.2	Good	Single Stem	Proponent	Removed
42	18 T 459764 5030534	Black Willow	26	2.6	Good	Single Stem	Proponent	Removed
43	18 T 459765 5030534	Cottonwood	11	1.1	Good	Single Stem	Proponent	Removed
44	18 T 459765 5030536	Black Willow	19.5	1.95	Good	Multistem	Proponent	Removed
45	18 T 459765 5030537	Cottonwood	10	1	Good	Single Stem	Proponent	Removed
46	18 T 459766 5030541	American Elm	16	1.6	Good	Single Stem	Proponent	Removed
47	18 T 459768 5030542	Manitoba Maple	16.67	1.6667	Good	Multistem	Proponent	Removed
48	18 T 459771 5030548	White Ash	13	1.3	Good	Single Stem	Proponent	Removed
49	18 T 459774 5030547	Cottonwood	15	1.5	Good	single Stem	Proponent	Removed
50	18 T 459767 5030551	White Ash	15	1.5	Dead	No leaves, bark falling off. Single Stem	Proponent	Removed
51	18 T 459767 5030553	White Spruce	34	3.4	Good	Single Stem	Proponent	Removed
52	18 T 459766 5030554	White Spruce	36	3.6	Good	Single Stem	Proponent	Removed
53	18 T 459775 5030553	White Ash	17.5	1.75	Dead	No leaves, bark falling off. Single Stem	Proponent	Removed
54	18 T 459776 5030554	White Ash	15	1.5	Dead	No leaves, bark falling off. Single Stem	Proponent	Removed
55	18 T 459777 5030553	White Ash	14	1.4	Dead	No leaves, bark falling off. Single Stem	Proponent	Removed
56	18 T 459773 5030555	White Ash	24	2.4	Dead	No leaves, bark falling off. Single Stem	Proponent	Removed
57	18 T 459775 5030562	Trembling Aspen	10	1	Good	Single Stem	Proponent	Removed
58	18 T 459776 5030559	White Ash	19	1.9	Poor	Leaf dieback. Single Stem	Proponent	Removed
59	18 T 459777 5030561	Trembling Aspen	13	1.3	Good	Single Stem	Proponent	Removed
60	18 T 459777 5030560	Trembling Aspen	10	1	Good	Single Stem	Proponent	Removed
61	18 T 459778 5030561	White Ash	24	2.4	Dead	No leaves, bark falling off. Single Stem	Proponent	Removed
62	18 T 459778 5030563	Trembling Aspen	19	1.9	Good	Single Stem	Proponent	Removed

TREE ID	UTM NAD83	SPECIES	AVG DBH (cm)	CRITICAL ROOT ZONE (m)	HEALTH	COMMENTS	OWNERSHIP	FATE
63	18 T 459779 5030564	Trembling Aspen	29	2.9	Good	Single Stem	Proponent	Removed
64	18 T 459781 5030565	White Ash	26	2.6	Dead	No leaves. Single Stem	Proponent	Removed
65	18 T 459779 5030566	White Ash	20	2	Dead	Broken @7m. Single stem	Proponent	Removed
66	18 T 459779 5030563	White Ash	17	1.7	Dead	No leaves, bark falling off. Single Stem	Proponent	Removed
67	18 T 459777 5030562	Black Cherry	18	1.8	Good	Single Stem	Proponent	Removed
68	18 T 459774 5030558	White Ash	24	2.4	Dead	No leaves. Single Stem	Proponent	Removed
69	18 T 459775 5030559	White Ash	21	2.1	Dead	No leaves. Multistem	Proponent	Removed
70	18 T 459774 5030564	Sugar Maple	66	6.6	Poor	Branch dieback, bark falling off. Single Stem	Proponent	Removed
71	18 T 459771 5030564	Trembling Aspen	10	1	Good	Single Stem	Proponent	Removed
72	18 T 459770 5030565	Trembling Aspen	10	1	Good	Single Stem	Proponent	Removed
73	18 T 459770 5030565	Trembling Aspen	11	1.1	Good	Single Stem	Proponent	Removed
74	18 T 459774 5030568	Trembling Aspen	11	1.1	Poor	Leaning. Single Stem	Proponent	Removed
75	18 T 459775 5030571	Trembling Aspen	14	1.4	Good	Single Stem	Proponent	Removed
76	18 T 459775 5030573	White Ash	14	1.4	Good	Single Stem	Proponent	Removed
77	18 T 459780 5030583	Cottonwood	20	2	Good	Single Stem	Proponent	Removed
78	18 T 459782 5030584	Cottonwood	19	1.9	Good	Single Stem	Proponent	Removed
79	18 T 459777 5030591	Black Willow	21.17	2.1167	Good	Multistem	Proponent	Removed
80	18 T 459799 5030578	Black Willow	15	1.5	Good	Single Stem	Proponent	Preserved
81	18 T 459799 5030576	Black Willow	12	1.2	Good	Single Stem	Proponent	Preserved
82	18 T 459796 5030560	Black Willow	13	1.3	Good	Multistem	Proponent	Removed
83	18 T 459796 5030561	Black Willow	16	1.6	Good	Single Stem	Proponent	Removed
84	18 T 459796 5030555	Cottonwood	17	1.7	Good	Single Stem	Proponent	Removed
85	18 T 459796 5030555	Cottonwood	20	2	Good	Single Stem	Proponent	Removed
86	18 T 459807 5030558	Manitoba Maple	26	2.6	Good	Single Stem	Proponent	Removed
87	18 T 459812 5030558	White Ash	14	1.4	Good	Single Stem	Proponent	Removed
88	18 T 459803 5030560	Trembling Aspen	23	2.3	Good	Single Stem	Proponent	Removed
89	18 T 459799 5030562	Trembling Aspen	25	2.5	Good	Single Stem	Proponent	Removed
90	18 T 459800 5030562	American Elm	25	2.5	Good	Single Stem	Proponent	Removed
91	18 T 459802 5030562	Trembling Aspen	12	1.2	Good	Single Stem	Proponent	Removed
92	18 T 459813 5030564	Trembling Aspen	10	1	Good	Multistem	Proponent	Removed
93	18 T 459837 5030564	Trembling Aspen	19	1.9	Good	Single Stem	Neighbor	Removed
94	18 T 459838 5030564	Trembling Aspen	10	1	Good	Single Stem	Neighbor	Removed
95	18 T 459838 5030563	Trembling Aspen	12	1.2	Good	Single Stem	Neighbor	Preserved
96	18 T 459839 5030564	Trembling Aspen	15	1.5	Good	Single Stem	Neighbor	Preserved
97	18 T 459841 5030565	Trembling Aspen	14	1.4	Good	Single Stem	Neighbor	Preserved

TREE ID	UTM NAD83	SPECIES	AVG DBH (cm)	CRITICAL ROOT ZONE (m)	HEALTH	COMMENTS	OWNERSHIP	FATE
98	18 T 459844 5030561	White Spruce	13	1.3	Good	Single Stem	Neighboor	Preserved
99	18 T 459845 5030560	White Pine	26	2.6	Good	Single Stem	Neighboor	Preserved
100	18 T 459850 5030560	Trembling Aspen	23	2.3	Good	Multistem	Neighboor	Preserved
101	18 T 459854 5030560	Trembling Aspen	18	1.8	Good	Single Stem	Neighboor	Preserved
102	18 T 459855 5030560	Trembling Aspen	21	2.1	Good	Single Stem	Neighboor	Preserved
103	18 T 459856 5030560	Trembling Aspen	10	1	Poor	Broken @4m. Single Stem	Neighboor	Preserved
104	18 T 459856 5030559	Manitoba Maple	15	1.5	Good	Single Stem	Neighboor	Preserved
105	18 T 459856 5030558	White Cedar	55	5.5	Good	Single Stem	Neighboor	Preserved
106	18 T 459861 5030556	White Birch	34	3.4	Good	Single Stem	Neighboor	Preserved
107	18 T 459868 5030554	American Elm	28	2.8	Dead	Branch dieback, bark falling off. Single Stem	Neighboor	Preserved
108	18 T 459863 5030553	Trembling Aspen	16	1.6	Dead	Broken @6m. Single Stem	Neighboor	Removed
109	18 T 459863 5030554	Trembling Aspen	20	2	Dead	No leaves. Single Stem	Neighboor	Preserved
110	18 T 459861 5030551	Trembling Aspen	12	1.2	Good	Single Stem	Neighboor	Preserved
111	18 T 459861 5030551	Trembling Aspen	14	1.4	Good	Single Stem	Neighboor	Removed
112	18 T 459866 5030549	Trembling Aspen	15	1.5	Good	Single Stem	Neighboor	Preserved
113	18 T 459869 5030546	Manitoba Maple	27	2.7	Good	In Adjacent Lands. Single Stem	Neighboor	Preserved
114	18 T 459864 5030543	Trembling Aspen	19	1.9	Good	Single Stem	Proponent	Preserved
115	18 T 459859 5030547	Trembling Aspen	10	1	Good	Single Stem	Proponent	Preserved
116	18 T 459856 5030546	Trembling Aspen	14	1.4	Good	Single Stem	Proponent	Preserved
117	18 T 459852 5030548	White Ash	16	1.6	Good	Single Stem	Proponent	Preserved
118	18 T 459844 5030549	White Ash	15	1.5	Dead	No leaves. Single Stem	Proponent	Preserved
119	18 T 459837 5030550	Trembling Aspen	13	1.3	Good	Single Stem	Proponent	Preserved
120	18 T 459836 5030550	Trembling Aspen	14	1.4	Good	Single Stem	Proponent	Preserved
121	18 T 459834 5030547	Trembling Aspen	10	1	Good	Single Stem	Proponent	Removed
122	18 T 459833 5030546	Trembling Aspen	14	1.4	Good	Single Stem	Proponent	Removed
123	18 T 459833 5030548	Trembling Aspen	15	1.5	Good	Single Stem	Proponent	Removed
124	18 T 459832 5030549	Trembling Aspen	19	1.9	Good	Single Stem	Proponent	Removed
125	18 T 459830 5030553	Trembling Aspen	12	1.2	Good	Single Stem	Proponent	Removed
126	18 T 459832 5030558	Butternut	19	1.9	Good	Single Stem	Proponent	Removed
127	18 T 459836 5030558	Trembling Aspen	29	2.9	Good	Single Stem	Proponent	Preserved
128	18 T 459831 5030557	Trembling Aspen	11	1.1	Good	Single Stem	Proponent	Removed
129	18 T 459830 5030552	Trembling Aspen	13	1.3	Good	Single Stem	Proponent	Removed
130	18 T 459831 5030553	Trembling Aspen	15	1.5	Good	Single Stem	Proponent	Removed
131	18 T 459832 5030552	Trembling Aspen	14	1.4	Good	Single Stem	Proponent	Removed
132	18 T 459832 5030553	Trembling Aspen	14	1.4	Good	Single Stem	Proponent	Removed

TREE ID	UTM NAD83	SPECIES	AVG DBH (cm)	CRITICAL ROOT ZONE (m)	HEALTH	COMMENTS	OWNERSHIP	FATE
133	18 T 459830 5030552	Trembling Aspen	15.5	1.55	Good	Multistem	Proponent	Removed
134	18 T 459829 5030550	Trembling Aspen	20	2	Good	Single Stem	Proponent	Removed
135	18 T 459831 5030548	Trembling Aspen	13	1.3	Good	Single Stem	Proponent	Removed
136	18 T 459825 5030551	Trembling Aspen	12	1.2	Good	Single Stem	Proponent	Removed
137	18 T 459822 5030543	Cottonwood	20	2	Good	Single Stem	Proponent	Removed
138	18 T 459825 5030542	Cottonwood	20	2	Good	Single Stem	Proponent	Removed
139	18 T 459820 5030539	Cottonwood	17.5	1.75	Good	Multistem	Proponent	Removed
140	18 T 459810 5030531	Cottonwood	12	1.2	Good	Single Stem	Proponent	Removed
141	18 T 459809 5030529	Cottonwood	16	1.6	Good	Single Stem	Proponent	Removed
142	18 T 459809 5030529	Cottonwood	10	1	Good	Single Stem	Proponent	Removed
143	18 T 459812 5030523	Black Willow	23.33	2.3333	Good	Multistem	Proponent	Removed
144	18 T 459813 5030522	Cottonwood	15	1.5	Good	Single Stem	Proponent	Removed
145	18 T 459812 5030517	Cottonwood	20	2	Good	Single Stem	Proponent	Removed
146	18 T 459812 5030517	Cottonwood	15	1.5	Good	Single Stem	Proponent	Removed
147	18 T 459812 5030514	Cottonwood	10	1	Good	Single Stem	Proponent	Removed
148	18 T 459812 5030508	Cottonwood	20	2	Good	Single Stem	Proponent	Removed
149	18 T 459811 5030507	Cottonwood	19	1.9	Good	Single Stem	Proponent	Removed
150	18 T 459853 5030509	Black Willow	27	2.7	Good	Multistem	Proponent	Removed
151	18 T 459860 5030527	Black Willow	26	2.6	Good	Multistem	Proponent	Preserved
152	18 T 459861 5030532	Black Willow	15.33	1.5333	Good	Multistem	Proponent	Preserved
153	18 T 459865 5030533	Black Willow	24	2.4	Good	Single Stem	Neighbor	Preserved
154	18 T 459866 5030530	Black Willow	12	1.2	Good	Single Stem	Neighbor	Preserved
155	18 T 459839 5030494	Cottonwood	19	1.9	Good	Single Stem	Proponent	Removed
156	18 T 459833 5030491	Cottonwood	15	1.5	Good	Single Stem	Proponent	Removed
157	18 T 459829 5030490	Cottonwood	17	1.7	Good	Single Stem	Proponent	Removed
158	18 T 459827 5030490	Cottonwood	10	1	Good	Single Stem	Proponent	Removed
159	18 T 459825 5030491	Cottonwood	15	1.5	Good	Single Stem	Proponent	Removed
160	18 T 459824 5030492	Cottonwood	14	1.4	Good	Single Stem	Proponent	Removed
161	18 T 459823 5030493	Cottonwood	14	1.4	Good	Single Stem	Proponent	Removed
162	18 T 459822 5030494	Cottonwood	15	1.5	Good	Single Stem	Proponent	Removed
163	18 T 459820 5030495	Cottonwood	18	1.8	Good	Single Stem	Proponent	Removed
164	18 T 459820 5030494	Cottonwood	15	1.5	Good	Single Stem	Proponent	Removed
165	18 T 459819 5030494	Cottonwood	16	1.6	Good	Single Stem	Proponent	Removed
166	18 T 459817 5030492	Cottonwood	17	1.7	Good	Single Stem	Proponent	Removed
167	18 T 459815 5030489	Cottonwood	17	1.7	Good	Single Stem	Proponent	Removed

TREE ID	UTM NAD83	SPECIES	AVG DBH (cm)	CRITICAL ROOT ZONE (m)	HEALTH	COMMENTS	OWNERSHIP	FATE
168	18 T 459814 5030488	Cottonwood	16	1.6	Good	Single Stem	Proponent	Removed
169	18 T 459814 5030487	Cottonwood	21	2.1	Good	Single Stem	Proponent	Removed
170	18 T 459815 5030487	Cottonwood	17	1.7	Good	Single Stem	Proponent	Removed
171	18 T 459820 5030488	Cottonwood	15	1.5	Good	Single Stem	Proponent	Removed
172	18 T 459822 5030487	Cottonwood	19	1.9	Good	Single Stem	Proponent	Removed
173	18 T 459824 5030487	Cottonwood	19	1.9	Good	Single Stem	Proponent	Removed
174	18 T 459825 5030487	Cottonwood	14	1.4	Good	Single Stem	Proponent	Removed
175	18 T 459828 5030485	Cottonwood	16	1.6	Good	Single Stem	Proponent	Removed
176	18 T 459828 5030483	Cottonwood	15	1.5	Good	Single Stem	Proponent	Removed
177	18 T 459828 5030483	Cottonwood	20	2	Good	Single Stem	Proponent	Removed
178	18 T 459830 5030486	Cottonwood	21	2.1	Good	Single Stem	Proponent	Removed
179	18 T 459830 5030488	Cottonwood	16	1.6	Good	Single Stem	Proponent	Removed
180	18 T 459830 5030488	Cottonwood	15	1.5	Good	Single Stem	Proponent	Removed
181	18 T 459832 5030483	Cottonwood	16	1.6	Good	Single Stem	Proponent	Removed
182	18 T 459832 5030482	Cottonwood	22	2.2	Good	Single Stem	Proponent	Removed
183	18 T 459834 5030480	Cottonwood	10	1	Good	Single Stem	Proponent	Removed
184	18 T 459834 5030480	Black Willow	26	2.6	Good	Single Stem	Proponent	Removed
185	18 T 459834 5030479	Cottonwood	12	1.2	Good	Single Stem	Proponent	Removed
186	18 T 459836 5030480	Cottonwood	14	1.4	Good	Single Stem	Proponent	Removed
187	18 T 459837 5030480	Cottonwood	16	1.6	Good	Single Stem	Proponent	Removed
188	18 T 459839 5030480	Cottonwood	17	1.7	Good	Single Stem	Proponent	Removed
189	18 T 459843 5030480	Cottonwood	19	1.9	Good	Single Stem	Proponent	Removed
190	18 T 459843 5030477	Cottonwood	14	1.4	Good	Single Stem	Proponent	Removed
191	18 T 459846 5030477	Cottonwood	18	1.8	Good	Single Stem	Proponent	Removed
192	18 T 459842 5030473	Cottonwood	15	1.5	Good	Single Stem	Proponent	Removed
193	18 T 459839 5030472	Cottonwood	12	1.2	Good	Multistem	Proponent	Removed
194	18 T 459837 5030474	Cottonwood	10	1	Good	Single Stem	Proponent	Removed
195	18 T 459837 5030473	Cottonwood	20	2	Good	Single Stem	Proponent	Removed
196	18 T 459838 5030467	Black Willow	28	2.8	Good	Single Stem	Proponent	Removed
197	18 T 459835 5030467	Cottonwood	25	2.5	Good	Single Stem	Proponent	Removed
198	18 T 459835 5030466	Cottonwood	15	1.5	Good	Single Stem	Proponent	Removed
199	18 T 459831 5030468	Cottonwood	12	1.2	Good	Single Stem	Proponent	Removed
200	18 T 459829 5030469	Cottonwood	12	1.2	Good	Single Stem	Proponent	Removed
201	18 T 459827 5030470	Black Willow	23	2.3	Good	Single Stem	Proponent	Removed
202	18 T 459824 5030473	Cottonwood	19	1.9	Good	Single Stem	Proponent	Removed

TREE ID	UTM NAD83	SPECIES	AVG DBH (cm)	CRITICAL ROOT ZONE (m)	HEALTH	COMMENTS	OWNERSHIP	FATE
203	18 T 459824 5030475	Cottonwood	10	1	Good	Single Stem	Proponent	Removed
204	18 T 459824 5030478	Cottonwood	13	1.3	Good	Single Stem	Proponent	Removed
205	18 T 459821 5030478	Cottonwood	15	1.5	Good	Single Stem	Proponent	Removed
206	18 T 459818 5030480	Cottonwood	12	1.2	Good	Single Stem	Proponent	Removed
207	18 T 459817 5030480	Cottonwood	10	1	Good	Single Stem	Proponent	Removed
208	18 T 459815 5030481	Cottonwood	12	1.2	Good	Single Stem	Proponent	Removed
209	18 T 459815 5030481	Cottonwood	12	1.2	Good	Single Stem	Proponent	Removed
210	18 T 459815 5030481	Cottonwood	18	1.8	Good	Single Stem	Proponent	Removed
211	18 T 459815 5030481	Cottonwood	17	1.7	Good	Single Stem	Proponent	Removed
212	18 T 459814 5030482	Cottonwood	13	1.3	Good	Single Stem	Proponent	Removed
213	18 T 459815 5030484	Cottonwood	14	1.4	Good	Single Stem	Proponent	Removed
214	18 T 459815 5030484	Cottonwood	15	1.5	Good	Single Stem	Proponent	Removed
215	18 T 459816 5030485	Cottonwood	22	2.2	Good	Single Stem	Proponent	Removed
216	18 T 459816 5030486	Cottonwood	16	1.6	Good	Single Stem	Proponent	Removed
217	18 T 459814 5030478	Cottonwood	18	1.8	Good	Single Stem	Proponent	Removed
218	18 T 459814 5030478	Cottonwood	16	1.6	Good	Single Stem	Proponent	Removed
219	18 T 459812 5030474	Cottonwood	16	1.6	Good	Single Stem	Proponent	Removed
220	18 T 459812 5030474	Cottonwood	27	2.7	Good	Single Stem	Proponent	Removed
221	18 T 459811 5030473	Cottonwood	15	1.5	Good	Single Stem	Proponent	Removed
222	18 T 459811 5030470	Cottonwood	10	1	Good	Single Stem	Proponent	Removed
223	18 T 459811 5030470	Cottonwood	17	1.7	Good	Single Stem	Proponent	Removed
224	18 T 459811 5030469	Cottonwood	15	1.5	Good	Single Stem	Proponent	Removed
225	18 T 459811 5030468	Cottonwood	18	1.8	Good	Single Stem	Proponent	Removed
226	18 T 459811 5030466	Cottonwood	18	1.8	Good	Single Stem	Proponent	Removed
227	18 T 459813 5030465	Cottonwood	20	2	Good	Single Stem	Proponent	Removed
228	18 T 459813 5030465	Cottonwood	18	1.8	Good	Single Stem	Proponent	Removed
229	18 T 459815 5030467	Cottonwood	12	1.2	Good	Single Stem	Proponent	Removed
230	18 T 459815 5030468	Cottonwood	19	1.9	Good	Multistem	Proponent	Removed
231	18 T 459817 5030469	Cottonwood	12	1.2	Good	Single Stem	Proponent	Removed
232	18 T 459817 5030469	Cottonwood	19	1.9	Good	Single Stem	Proponent	Removed
233	18 T 459819 5030467	Cottonwood	18	1.8	Good	Single Stem	Proponent	Removed
234	18 T 459821 5030468	Cottonwood	17	1.7	Good	Single Stem	Proponent	Removed
235	18 T 459822 5030465	Cottonwood	19	1.9	Good	Single Stem	Proponent	Removed
236	18 T 459822 5030463	Cottonwood	15	1.5	Good	Single Stem	Proponent	Removed
237	18 T 459822 5030462	Cottonwood	13	1.3	Good	Single Stem	Proponent	Removed

TREE ID	UTM NAD83	SPECIES	AVG DBH (cm)	CRITICAL ROOT ZONE (m)	HEALTH	COMMENTS	OWNERSHIP	FATE
238	18 T 459821 5030460	Cottonwood	16	1.6	Good	Single Stem	Proponent	Removed
239	18 T 459822 5030459	Cottonwood	10	1	Good	Single Stem	Proponent	Removed
240	18 T 459823 5030459	Cottonwood	10	1	Good	Single Stem	Proponent	Removed
241	18 T 459824 5030461	Cottonwood	10	1	Good	Single Stem	Proponent	Removed
242	18 T 459825 5030461	Cottonwood	10	1	Good	Single Stem	Proponent	Removed
243	18 T 459825 5030462	Cottonwood	13	1.3	Good	Single Stem	Proponent	Removed
244	18 T 459827 5030461	Manitoba Maple	16	1.6	Good	Single Stem	Proponent	Removed
245	18 T 459828 5030459	Cottonwood	15	1.5	Good	Single Stem	Proponent	Removed
246	18 T 459829 5030458	Cottonwood	18	1.8	Good	Single Stem	Proponent	Removed
247	18 T 459829 5030457	Cottonwood	17	1.7	Good	Single Stem	Proponent	Removed
248	18 T 459829 5030457	Cottonwood	10	1	Good	Single Stem	Proponent	Removed
249	18 T 459829 5030456	Black Willow	19	1.9	Good	Single Stem	Proponent	Removed
250	18 T 459827 5030456	Cottonwood	11	1.1	Good	Single Stem	Proponent	Removed
251	18 T 459826 5030455	Cottonwood	13	1.3	Good	Single Stem	Proponent	Removed
252	18 T 459825 5030453	Cottonwood	17	1.7	Good	Single Stem	Proponent	Removed
253	18 T 459823 5030453	Cottonwood	17	1.7	Good	Single Stem	Proponent	Removed
254	18 T 459822 5030454	Cottonwood	14	1.4	Good	Single Stem	Proponent	Removed
255	18 T 459819 5030453	Cottonwood	14	1.4	Good	Single Stem	Proponent	Removed
256	18 T 459822 5030457	Cottonwood	15	1.5	Good	Single Stem	Proponent	Removed
257	18 T 459821 5030458	Cottonwood	12	1.2	Good	Single Stem	Proponent	Removed
258	18 T 459820 5030458	Cottonwood	10	1	Good	Single Stem	Proponent	Removed
259	18 T 459820 5030458	Cottonwood	10	1	Good	Single Stem	Proponent	Removed
260	18 T 459825 5030449	Black Willow	12	1.2	Good	Single Stem	Proponent	Removed
261	18 T 459826 5030450	Black Willow	18	1.8	Good	Single Stem	Proponent	Removed
262	18 T 459829 5030451	Cottonwood	13	1.3	Good	Single Stem	Proponent	Removed
263	18 T 459830 5030451	Black Willow	18	1.8	Good	Single Stem	Proponent	Removed
264	18 T 459831 5030451	Black Willow	14	1.4	Good	Single Stem	Proponent	Removed
265	18 T 459833 5030449	Black Willow	18	1.8	Good	Single Stem	Proponent	Removed
266	18 T 459837 5030450	Black Willow	22	2.2	Good	Single Stem	Proponent	Removed
267	18 T 459838 5030450	Black Willow	24	2.4	Good	Single Stem	Proponent	Removed
268	18 T 459838 5030450	Black Willow	24	2.4	Good	Single Stem	Proponent	Removed
269	18 T 459843 5030449	Cottonwood	16	1.6	Good	Single Stem	Proponent	Removed
270	18 T 459844 5030450	Cottonwood	16	1.6	Good	Single Stem	Proponent	Removed
271	18 T 459844 5030449	Cottonwood	10	1	Good	Single Stem	Proponent	Removed
272	18 T 459843 5030448	Cottonwood	16	1.6	Good	Single Stem	Proponent	Removed

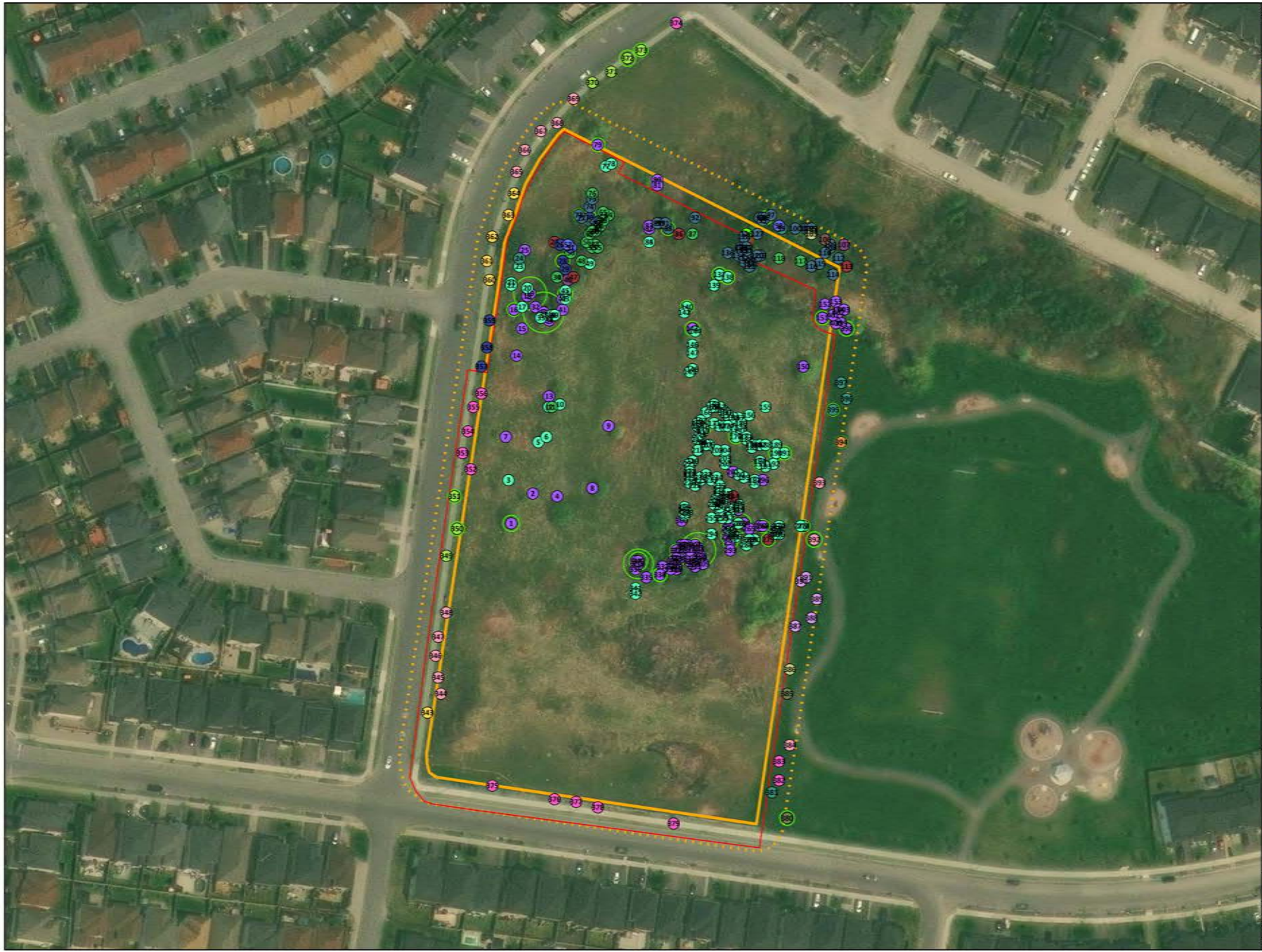
TREE ID	UTM NAD83	SPECIES	AVG DBH (cm)	CRITICAL ROOT ZONE (m)	HEALTH	COMMENTS	OWNERSHIP	FATE
273	18 T 459853 5030450	Cottonwood	11	1.1	Good	Single Stem	Neighbor	Removed
274	18 T 459853 5030450	Cottonwood	15	1.5	Good	Single Stem	Proponent	Removed
275	18 T 459852 5030450	Cottonwood	18	1.8	Good	Single Stem	Proponent	Removed
276	18 T 459844 5030447	Cottonwood	17	1.7	Good	Single Stem	Proponent	Removed
277	18 T 459843 5030447	Cottonwood	12	1.2	Good	Single Stem	Proponent	Removed
278	18 T 459842 5030447	Cottonwood	15	1.5	Good	Single Stem	Proponent	Removed
279	18 T 459840 5030445	Manitoba Maple	17	1.7	Good	Single Stem	Proponent	Removed
280	18 T 459835 5030445	Cottonwood	16	1.6	Good	Single Stem	Proponent	Removed
281	18 T 459834 5030445	Black Willow	14	1.4	Good	Single Stem	Proponent	Removed
282	18 T 459833 5030445	Cottonwood	18	1.8	Good	Single Stem	Proponent	Removed
283	18 T 459832 5030443	Cottonwood	21	2.1	Good	Single Stem	Proponent	Removed
284	18 T 459832 5030443	Black Willow	16	1.6	Good	Single Stem	Proponent	Removed
285	18 T 459832 5030443	Black Willow	21	2.1	Good	Single Stem	Proponent	Removed
286	18 T 459828 5030446	Cottonwood	10	1	Good	Single Stem	Proponent	Removed
287	18 T 459826 5030448	Cottonwood	11	1.1	Good	Single Stem	Proponent	Removed
288	18 T 459826 5030448	Cottonwood	12	1.2	Good	Single Stem	Proponent	Removed
289	18 T 459825 5030446	Black Willow	11	1.1	Good	Single Stem	Proponent	Removed
290	18 T 459827 5030447	Black Willow	18	1.8	Good	Single Stem	Proponent	Removed
291	18 T 459827 5030446	Black Willow	20	2	Good	Single Stem	Proponent	Removed
292	18 T 459826 5030444	Black Willow	10	1	Good	Single Stem	Proponent	Removed
293	18 T 459826 5030441	Black Willow	25	2.5	Good	Single Stem	Proponent	Removed
294	18 T 459819 5030447	Cottonwood	17	1.7	Good	Single Stem	Proponent	Removed
295	18 T 459809 5030456	Cottonwood	14	1.4	Good	Single Stem	Proponent	Removed
296	18 T 459809 5030457	Cottonwood	18	1.8	Good	Single Stem	Proponent	Removed
297	18 T 459809 5030456	Cottonwood	15	1.5	Good	Single Stem	Proponent	Removed
298	18 T 459810 5030455	Cottonwood	14	1.4	Good	Single Stem	Proponent	Removed
299	18 T 459809 5030454	Cottonwood	16	1.6	Good	Single Stem	Proponent	Removed
300	18 T 459808 5030452	Black Willow	21	2.1	Good	Multistem	Proponent	Removed
301	18 T 459813 5030443	Black Willow	20	2	Good	Single Stem	Proponent	Removed
302	18 T 459813 5030443	Black Willow	18	1.8	Good	Single Stem	Proponent	Removed
303	18 T 459814 5030442	Black Willow	15	1.5	Good	Single Stem	Proponent	Removed
304	18 T 459814 5030441	Black Willow	13	1.3	Good	Single Stem	Proponent	Removed
305	18 T 459815 5030439	Black Willow	18	1.8	Good	Single Stem	Proponent	Removed
306	18 T 459815 5030438	Black Willow	16	1.6	Good	Single Stem	Proponent	Removed
307	18 T 459815 5030438	Black Willow	20	2	Good	Single Stem	Proponent	Removed

TREE ID	UTM NAD83	SPECIES	AVG DBH (cm)	CRITICAL ROOT ZONE (m)	HEALTH	COMMENTS	OWNERSHIP	FATE
308	18 T 459815 5030438	Black Willow	17	1.7	Good	Single Stem	Proponent	Removed
309	18 T 459816 5030436	Black Willow	11	1.1	Good	Multistem	Proponent	Removed
310	18 T 459813 5030437	Black Willow	16	1.6	Good	Single Stem	Proponent	Removed
311	18 T 459813 5030435	Black Willow	17	1.7	Good	Single Stem	Proponent	Removed
312	18 T 459812 5030436	Black Willow	18	1.8	Good	Single Stem	Proponent	Removed
313	18 T 459812 5030437	Black Willow	11	1.1	Good	Multistem	Proponent	Removed
314	18 T 459811 5030437	Black Willow	12	1.2	Good	Single Stem	Proponent	Removed
315	18 T 459811 5030438	Black Willow	13	1.3	Good	Single Stem	Proponent	Removed
316	18 T 459811 5030441	Black Willow	17	1.7	Good	Multistem	Proponent	Removed
317	18 T 459810 5030443	Black Willow	15.5	1.55	Good	Multistem	Proponent	Removed
318	18 T 459808 5030443	Black Willow	12.5	1.25	Good	Multistem	Proponent	Removed
319	18 T 459809 5030443	Black Willow	26	2.6	Good	Single Stem	Proponent	Removed
320	18 T 459809 5030442	Black Willow	15	1.5	Good	Single Stem	Proponent	Removed
321	18 T 459807 5030441	Black Willow	25	2.5	Good	Single Stem	Proponent	Removed
322	18 T 459806 5030441	Black Willow	15	1.5	Good	Single Stem	Proponent	Removed
323	18 T 459806 5030438	Black Willow	14	1.4	Good	Single Stem	Proponent	Removed
324	18 T 459807 5030438	Black Willow	15	1.5	Good	Single Stem	Proponent	Removed
325	18 T 459806 5030438	Black Willow	14	1.4	Good	Single Stem	Proponent	Removed
326	18 T 459805 5030437	Black Willow	18	1.8	Good	Single Stem	Proponent	Removed
327	18 T 459806 5030437	Black Willow	16	1.6	Good	Single Stem	Proponent	Removed
328	18 T 459806 5030434	Black Willow	18	1.8	Good	Single Stem	Proponent	Removed
329	18 T 459806 5030435	Black Willow	19	1.9	Good	Multistem	Proponent	Removed
330	18 T 459805 5030435	Black Willow	15	1.5	Good	Single Stem	Proponent	Removed
331	18 T 459804 5030434	Black Willow	21	2.1	Good	Single Stem	Proponent	Removed
332	18 T 459801 5030435	Black Willow	22	2.2	Good	Multistem	Proponent	Removed
333	18 T 459800 5030432	Black Willow	20	2	Good	Single Stem	Proponent	Removed
334	18 T 459800 5030432	Black Willow	19	1.9	Good	Single Stem	Proponent	Removed
335	18 T 459795 5030431	Black Willow	25.5	2.55	Good	Multistem	Proponent	Removed
336	18 T 459791 5030434	Black Willow	13.67	1.3667	Good	Multistem	Proponent	Removed
337	18 T 459791 5030437	Black Willow	20	2	Good	Multistem	Proponent	Removed
338	18 T 459792 5030436	Black Willow	20	2	Good	Single Stem	Proponent	Removed
339	18 T 459792 5030436	Black Willow	10	1	Good	Single Stem	Proponent	Removed
340	18 T 459792 5030437	Black Willow	15	1.5	Good	Single Stem	Proponent	Removed
341	18 T 459791 5030427	Cottonwood	21	2.1	Good	Single Stem	Proponent	Removed
342	18 T 459791 5030425	Cottonwood	25	2.5	Good	Single Stem	Proponent	Removed

TREE ID	UTM NAD83	SPECIES	AVG DBH (cm)	CRITICAL ROOT ZONE (m)	HEALTH	COMMENTS	OWNERSHIP	FATE
343	18 T 459714 5030381	Red Oak	6	0.6	Good	Single Stem	City of Ottawa	Removed
344	18 T 459719 5030388	Common Hackberry	7	0.7	Good	Single Stem	City of Ottawa	To Be Transplanted
345	18 T 459718 5030394	Common Hackberry	8	0.8	Good	Single Stem	City of Ottawa	To Be Transplanted
346	18 T 459717 5030402	Common Hackberry	10	1	Good	Single Stem	City of Ottawa	To Be Transplanted
347	18 T 459718 5030409	Common Hackberry	11	1.1	Good	Minor bark damage. Single Stem	City of Ottawa	To Be Transplanted
348	18 T 459721 5030418	Common Hackberry	14	1.4	Good	Minor bark damage. Single Stem	City of Ottawa	To Be Transplanted
349	18 T 459721 5030439	Basswood	14	1.4	Good	Single Stem	City of Ottawa	To Be Transplanted
350	18 T 459725 5030449	Basswood	5	0.5	Good	Single Stem	City of Ottawa	To Be Transplanted
351	18 T 459724 5030461	Basswood	13	1.3	Good	Single Stem	City of Ottawa	To Be Transplanted
352	18 T 459730 5030471	Red Maple	6	0.6	Good	Single Stem	City of Ottawa	To Be Transplanted
353	18 T 459727 5030477	Red Maple	13	1.3	Good	Minor bark damage. Single Stem	City of Ottawa	To Be Transplanted
354	18 T 459729 5030485	Red Maple	11	1.1	Good	Single Stem + Ground Shoots	City of Ottawa	To Be Transplanted
355	18 T 459731 5030494	Red Maple	10	1	Good	Single Stem + Ground Shoots	City of Ottawa	To Be Transplanted
356	18 T 459734 5030499	Red Maple	9	0.9	Good	Single Stem + Ground Shoots	City of Ottawa	To Be Transplanted
357	18 T 459734 5030509	Sugar Maple	10	1	Good	Minor Branch Dieback. Single Stem	City of Ottawa	Removed
358	18 T 459736 5030516	Sugar Maple	5	0.5	Poor	Leaf dieback. Single Stem	City of Ottawa	Preserved
359	18 T 459737 5030526	Sugar Maple	5	0.5	Good	Minor Leaf Dieback. Single Stem	City of Ottawa	Preserved
360	18 T 459737 5030541	Red Oak	6	0.6	Good	Single Stem	City of Ottawa	Preserved
361	18 T 459736 5030548	Red Oak	6	0.6	Good	Single Stem	City of Ottawa	Preserved
362	18 T 459738 5030557	Red Oak	8	0.8	Good	Single Stem	City of Ottawa	Preserved
363	18 T 459744 5030565	Red Oak	6	0.6	Good	Single Stem	City of Ottawa	Preserved

TREE ID	UTM NAD83	SPECIES	AVG DBH (cm)	CRITICAL ROOT ZONE (m)	HEALTH	COMMENTS	OWNERSHIP	FATE
364	18 T 459746 5030573	Red Oak	10	1	Good	Single Stem	City of Ottawa	Preserved
365	18 T 459747 5030581	Common Hackberry	13	1.3	Good	Single Stem	City of Ottawa	Preserved
366	18 T 459750 5030589	Common Hackberry	15	1.5	Good	Minor bark damage. Single Stem	City of Ottawa	Preserved
367	18 T 459756 5030596	Common Hackberry	14	1.4	Good	Minor bark damage. Single Stem	City of Ottawa	Preserved
368	18 T 459762 5030599	Common Hackberry	13	1.3	Good	Minor bark damage. Single Stem	City of Ottawa	Preserved
369	18 T 459768 5030608	Common Hackberry	15	1.5	Good	Minor bark damage. Single Stem	City of Ottawa	Preserved
370	18 T 459775 5030614	Basswood	14	1.4	Good	Single Stem	City of Ottawa	Preserved
371	18 T 459782 5030618	Basswood	12	1.2	Good	Single Stem	City of Ottawa	Preserved
372	18 T 459788 5030623	Basswood	12	1.2	Good	Single Stem	City of Ottawa	Preserved
373	18 T 459793 5030626	Basswood	10	1	Good	Single Stem	City of Ottawa	Preserved
374	18 T 459806 5030636	Red Maple	10	1	Good	Single Stem + Ground Shoots	City of Ottawa	Preserved
375	18 T 459738 5030354	Red Maple	5	0.5	Good	Single Stem	City of Ottawa	Transplanted
376	18 T 459761 5030349	Red Maple	6	0.6	Good	Single Stem	City of Ottawa	Transplanted
377	18 T 459769 5030348	Red Maple	5	0.5	Good	Single Stem	City of Ottawa	Preserved
378	18 T 459777 5030346	Red Maple	6	0.6	Good	Single Stem	City of Ottawa	Preserved
379	18 T 459805 5030340	Red Maple	9	0.9	Good	Single Stem + Ground Shoots	City of Ottawa	Preserved
380	18 T 459847 5030342	Bur Oak	7	0.7	Good	Single Stem	Neighbour	Preserved
381	18 T 459839 5030352	White Pine	5	0.5	Good	Single Stem	Neighbour	Preserved
382	18 T 459844 5030356	Red Maple	7	0.7	Good	Single Stem	Neighbour	Preserved
383	18 T 459844 5030363	Red Maple	7	0.7	Good	Single Stem	Neighbour	Preserved
384	18 T 459848 5030369	Common Hackberry	7	0.7	Good	Single Stem	Neighbour	Preserved
385	18 T 459847 5030388	Bur Oak	8	0.8	Good	Single Stem	Neighbour	Preserved
386	18 T 459848 5030397	White Cedar	5	0.5	Good	Single Stem	Neighbour	Preserved

TREE ID	UTM NAD83	SPECIES	AVG DBH (cm)	CRITICAL ROOT ZONE (m)	HEALTH	COMMENTS	OWNERSHIP	FATE
387	18 T 459850 5030413	River Birch	4.333	0.4333	Good	Multistem	Neighbor	Preserved
388	18 T 459856 5030416	River Birch	3.667	0.3667	Good	Multistem	Neighbor	Preserved
389	18 T 459858 5030423	River Birch	4.5	0.45	Good	Multistem	Neighbor	Preserved
390	18 T 459850 5030430	River Birch	3.5	0.35	Good	Multistem	Neighbor	Preserved
391	18 T 459854 5030431	River Birch	3.333	0.3333	Good	Multistem	Neighbor	Preserved
392	18 T 459857 5030445	Common Hackberry	6	0.6	Good	Single Stem	Neighbor	Preserved
393	18 T 459859 5030466	Common Hackberry	6	0.6	Good	Single Stem	Neighbor	Preserved
394	18 T 459867 5030481	Black Locust	8	0.8	Good	Single Stem	Neighbor	Preserved
395	18 T 459864 5030493	White Pine	7	0.7	Good	Single Stem	Neighbor	Preserved
396	18 T 459869 5030497	White Pine	6	0.6	Good	Single Stem	Neighbor	Preserved
397	18 T 459867 5030503	White Pine	7	0.7	Good	Single Stem	Neighbor	Preserved
398	18 T 459869 5030523	Black Willow	23	2.3	Good	Single Stem	Neighbor	Preserved
399	18 T 459867 5030525	Black Willow	17	1.7	Good	Multistem	Neighbor	Preserved
400	18 T 459865 5030525	Black Willow	12	1.2	Good	Single Stem	Neighbor	Preserved
401	18 T 459864 5030528	Black Willow	14.5	1.45	Good	Multistem	Neighbor	Preserved
402	18 T 459866 5030529	Black Willow	17	1.7	Good	Single Stem	Neighbor	Removed
403	18 T 459868 5030530	Black Willow	20	2	Good	Single Stem	Neighbor	Removed



GENERAL NOTES

SOG Counties, Maxar, Microsoft

LEGEND

- Subject Lands
- Adjacent Lands (10m)
- Limit/Extent of Construction

Tree Species

- American Elm
- Basswood
- Black Cherry
- Black Locust
- Black Willow
- Bur Oak
- Butternut
- Common Hackberry
- Cottonwood
- Manitoba Maple
- Red Maple
- Red Oak
- River Birch
- Sugar Maple
- Trembling Aspen
- White Ash
- White Birch
- White Cedar
- White Pine
- White Spruce
- CRITICAL ROOT ZONE



Tree Inventory

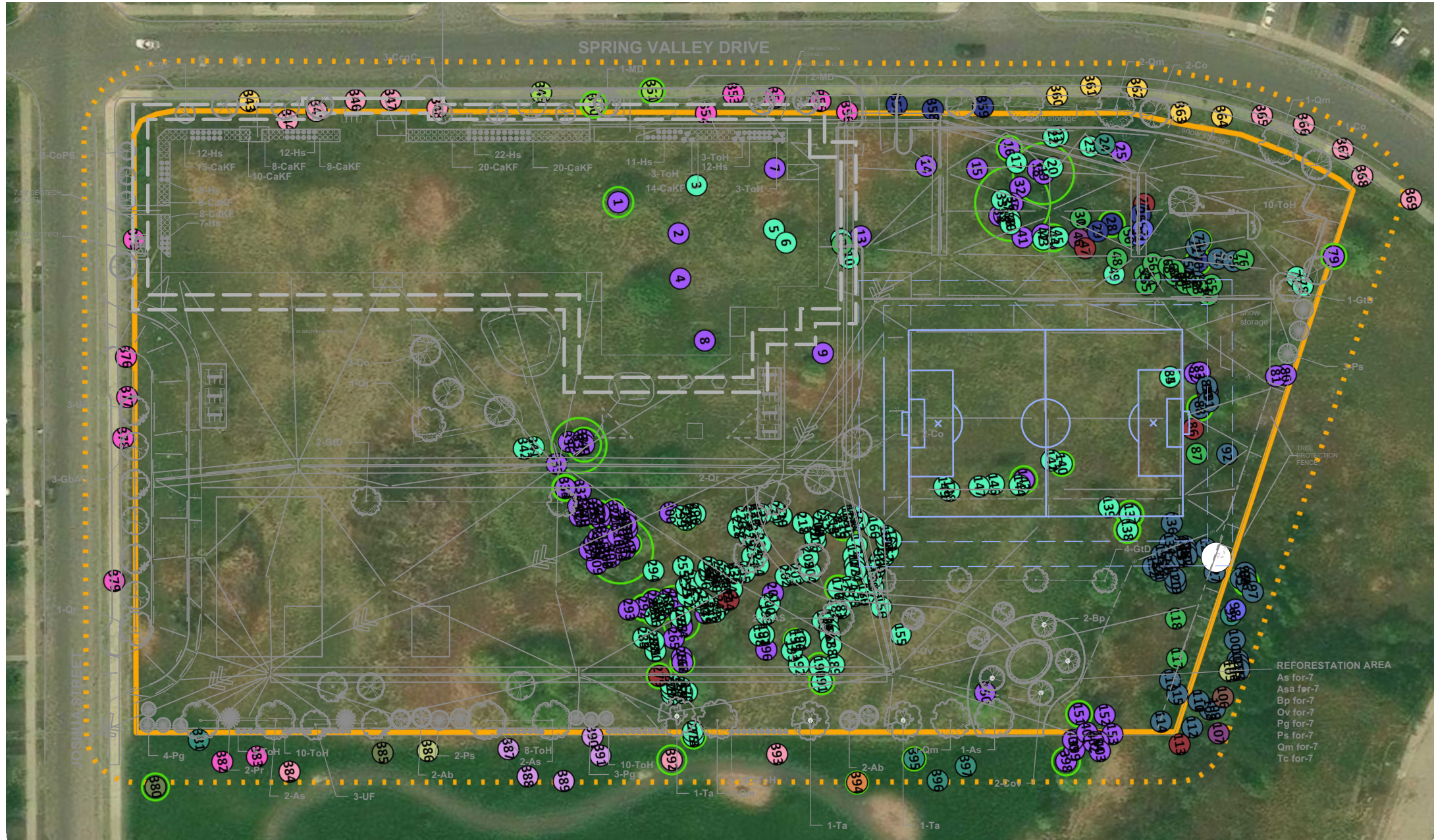
PROJECT: 700 SPRING VALLEY DRIVE
CITY OF OTTAWA

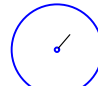





DATE: 1-6-2024	DRAWN BY: Andrew E. Boyd, R.P.F.
SCALE: 1:600	
REV: 2024-12-05	
CLIENT: 55	700 S
PROJECT: 1	

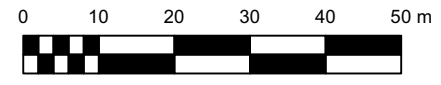
Figure 2 SAR SEARCH AREA





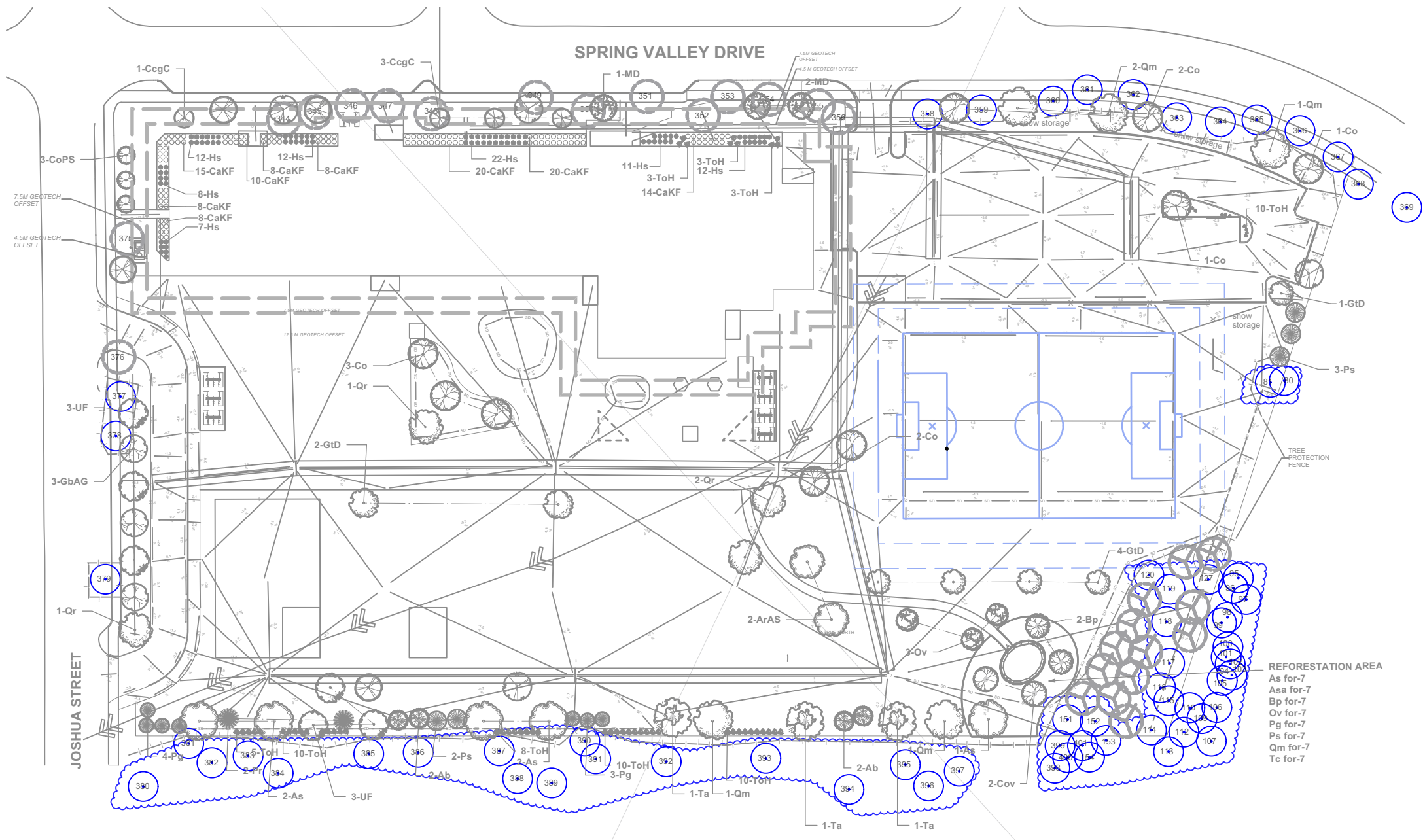


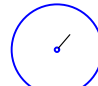



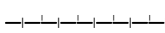
-  EXISTING TREES TO BE PRESERVED
-  EXISTING TREES TO BE REMOVED AND REPLACED ELSEWHERE
-  TRANSPLANTED TREE
-  PROPOSED PLANTING

1 MAP 1
TCR 1 Scale: 1:1000



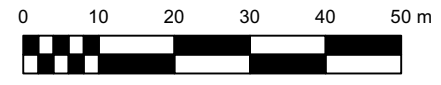
 <p>Ruhland & Associates Ltd landscape architecture • urban design • site planning Ph 613-224-4744 Fx 613-224-1131 info@rala.ca www.rala.ca</p>	project SPRING VALLEY ELEMENTARY OCDSB 799 Spring Valley Drive, Ottawa, ON		drawing EXISTING VEGETATION PLAN		
		date 2024 12 06	drawn by D.A.	project no. 24-1743	dwg. no. TCR 1
	scale 1:1000	checked by M.R.	revision no.		





-  EXISTING TREES TO BE PRESERVED
-  EXISTING TREES TO BE REMOVED AND REPLACED ELSEWHERE
-  TRANSPLANTED TREE
-  PROPOSED PLANTING
-  TREE PROTECTION FENCE

NOTE:
 SITE SERVICING ELEMENTS SHOWN ON THIS SHEET ARE FOR REFERENCE ONLY. SEE CIVIL DRAWINGS FOR SITE SERVICING / GRADING.

4 MAP 2
 TCR 2 Scale: 1:1000



 <p>Ruhland & Associates Ltd landscape architecture • urban design • site planning Ph 613-224-4744 Fx 613-224-1131 info@rala.ca www.rala.ca</p>	project SPRING VALLEY ELEMENTARY OCDSB 799 Spring Valley Drive, Ottawa, ON		drawing TREE CONSERVATION PLAN		
		date 2024 12 06	drawn by D.A.	project no. 24-1743	dwg. no. TCR 2
	scale 1:1000	checked by M.R.	revision no.		