

APPROVED UNDER SECTION 51 OF THE PLANNING ACT BY THE CITY OF OTTAWA.  
 THIS 6<sup>th</sup> DAY OF August, 2024

*Luichi*  
 VIVI CH, INTERIM GENERAL MANAGER  
 PLANNING, DEVELOPMENT AND BUILDING SERVICES DEPARTMENT  
 CITY OF OTTAWA

**PLAN 4M-1746**  
 I CERTIFY THAT THIS PLAN IS REGISTERED IN THE LAND REGISTRY OFFICE FOR THE LAND TITLES DIVISION OF OTTAWA-CARLETON NO. 4 AT 13:00 CLOCK ON THE 24 DAY OF SEPT, 2024 AND ENTERED IN THE PARCEL REGISTER FOR PROPERTY IDENTIFIERS 04331-4099 AND 04331-4008 AND THE REQUIRED CONSENTS ARE REGISTERED AS PLAN DOCUMENT NO. 04 2024103  
*[Signature]*  
 REPRESENTATIVE FOR LAND REGISTRAR  
 This plan comprises part of PIN's 04331-4099 and 04331-4008.

Block 1: Subject to easement Inst's GL42390, GL50431 and OC978816.  
 Block 2: Subject to easement Inst's GL50431, OC978816 and OC1234454.  
 Block 3: Subject to easement Inst's GL42390 and GL24445.  
 Block 4: Subject to easement Inst. GL50431.  
 Block 5: Subject to easement Inst's GL50431, OC978816 and OC1234454.  
 Block 6: Subject to easement Inst. GL42390.  
 Block 7: Subject to easement Inst's GL42390, GL42445 and OC1234454.  
 Block 8: Subject to easement Inst's GL42390, GL42445 and OC1234454.  
 Block 9: Subject to easement Inst's GL42390, GL42445 and OC1234454.

PLAN OF SUBDIVISION OF  
**PART OF LOTS 16 and 17**  
**CONCESSION 1 (RIDEAU FRONT)**  
 Geographic Township of Gloucester  
**CITY OF OTTAWA**  
 Surveyed by Annis, O'Sullivan, Vollebek Ltd.

Scale 1: 1500

Metric  
 DISTANCES AND COORDINATES SHOWN ON THIS PLAN ARE IN METRES AND CAN BE CONVERTED TO FEET BY DIVIDING BY 0.3048.

Surveyor's Certificate  
 I CERTIFY THAT:  
 1. This survey and plan are correct and in accordance with the Surveys Act, the Surveyors Act and the Land Titles Act and the regulations under them.  
 2. The survey was completed on the 15th day of April, 2024.

May 16, 2024  
 Date  
 T. Hartwick  
 Ontario Land Surveyor

This plan of survey relates to AOLS Plan Submission Form Number V-75409  
 OWNER'S CERTIFICATE PIN 04331-4099  
 THIS IS TO CERTIFY THAT:

- Blocks 1 to 7, both inclusive, the Streets, namely, rue Gastops Street and Part of promenade Mosquito Drive and the Reserves, namely, Blocks 8 and 9 have been laid out in accordance with our instructions.
- The Streets are dedicated to City of Ottawa as public highways.

Dated the 15<sup>th</sup> day of May, 2024  
 Marcel Denomme  
 Authorized Signing Officer  
 Riverside South Development Corp.  
 I have authority to bind the corporation.

OWNER'S CERTIFICATE PIN 04331-4008  
 THIS IS TO CERTIFY THAT:

- Part of the Street, namely, part of promenade Mosquito Drive has been laid out in accordance with our instructions.
- The Street is dedicated to City of Ottawa as public highway.

Dated the 15<sup>th</sup> day of May, 2024  
 Marcel Denomme  
 Vice President of Land Development  
 Urbandale Corporation  
 I have authority to bind the corporation.

NOTES AND LEGEND

—	denotes	Survey Monument Planted
—	denotes	Survey Monument Found
SIB	Standard Iron Bar	
SSIB	Short Standard Iron Bar	
IB	Iron Bar	
(AOG)	Annis, O'Sullivan, Vollebek Ltd.	
(P1)	Plan 4R-23271	
(P2)	Plan 4R-24816	
(P3)	Plan 4R-8033	
(P4)	(AOG) Plan dated June 20, 2022	
PWF	Post and Wire Fence	
U.P.	Utility Pole	
AN	Anchor	
C/	Calculated Per	

All planted monument are SSIB's unless otherwise noted.  
 Distances shown on this plan are ground distances and can be converted to grid distances by multiplying by the combined scale factor of 0.99994.

Bearings are grid, derived from Can-Net 2016 Real Time Network GPS observations referenced to Specified Control Points 0191971338 and 01919871649, and are referenced to Specified Control Points 0191971338 and 01919871649, MTM Zone 9 (76°30' West Longitude) NAD-83 (original).

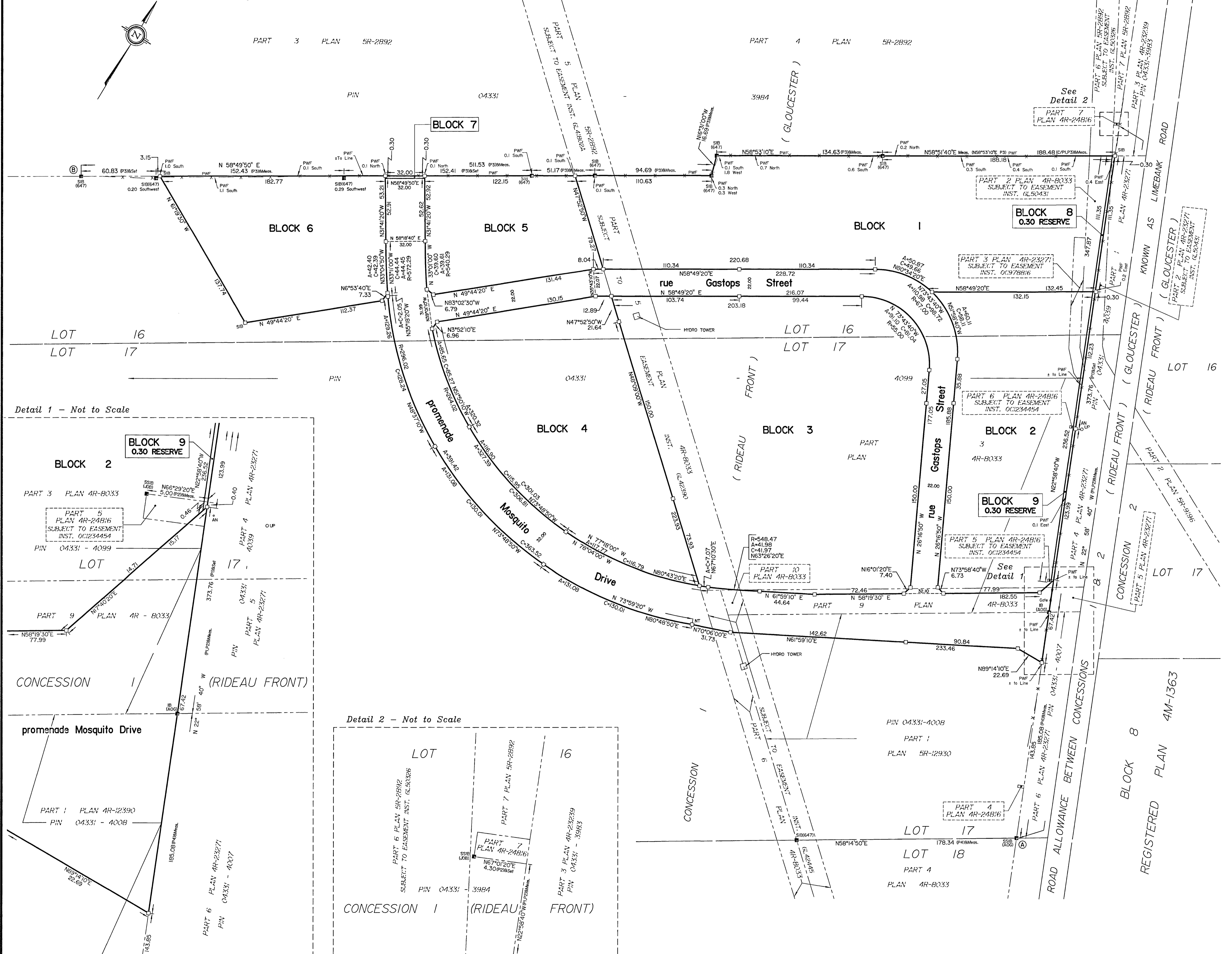
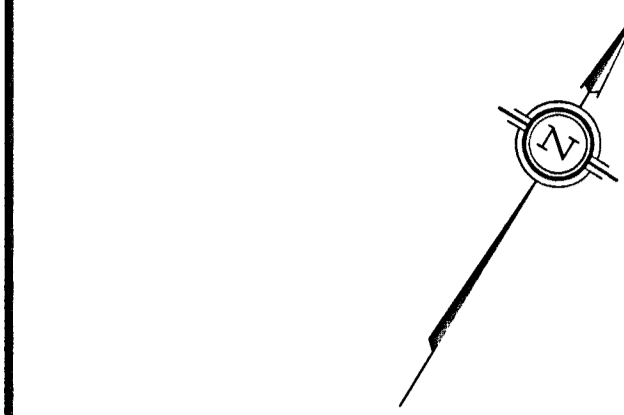
For comparison purposes, a rotation of 0°35'00" counter-clockwise was applied to bearings on Plan P3.

Coordinates are derived from Can-Net 2016 Real Time Network GPS observations referenced to Specified Control Points 0191971338 and 01919871649, MTM Zone 9 (76°30' West Longitude) NAD-83 (original).

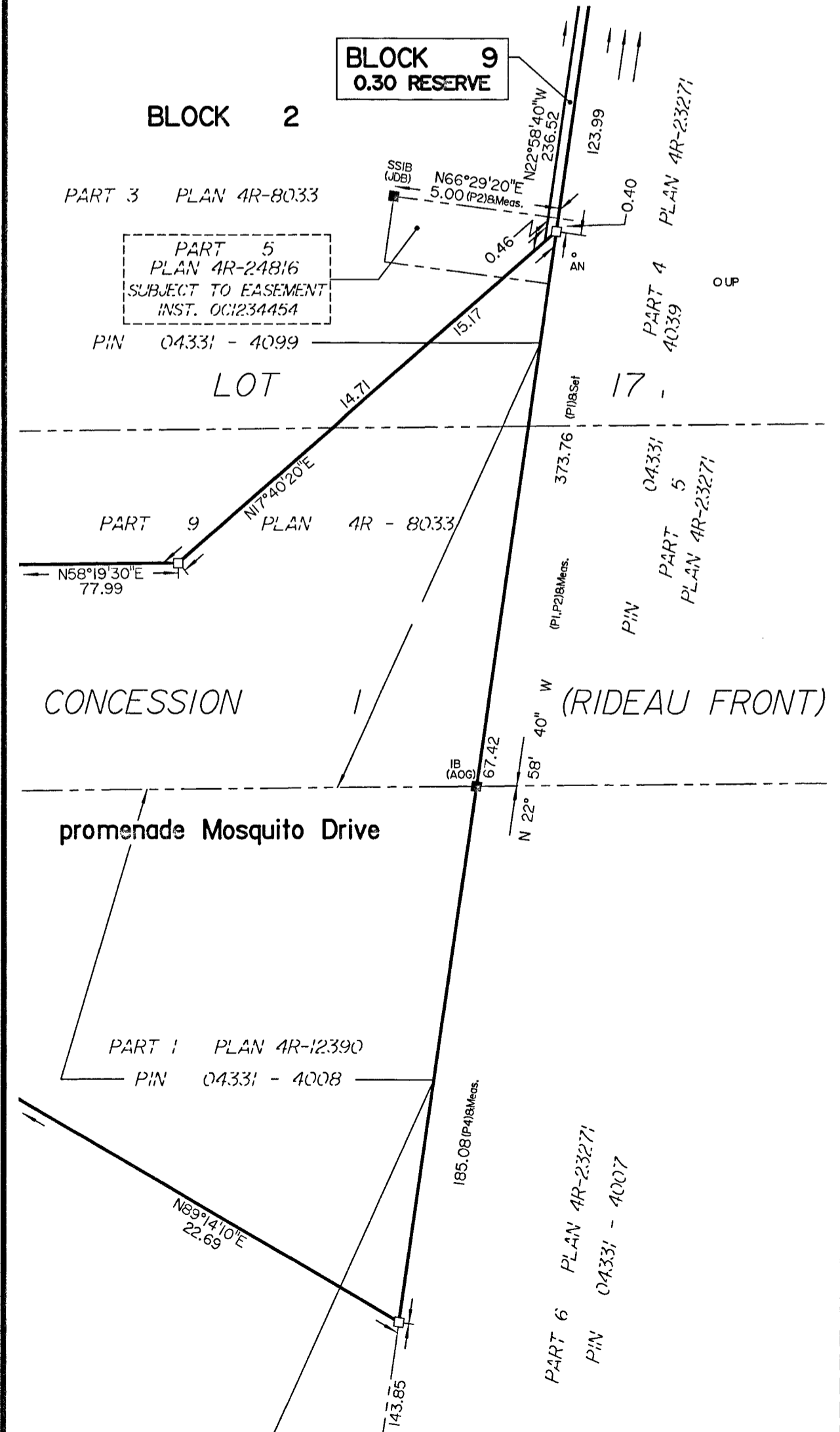
Coordinate values are to urban accuracy in accordance with O. Reg. 216/10.				
.0191971338	Northing	5000505.96	East	346140.01
.01919871649	Northing	5007189.87	East	372435.05
.Point A	Northing	5017197.15	East	369605.42
.Point B	Northing	5017263.87	East	368677.89

Caution: Coordinates cannot, in themselves, be used to re-establish corners or boundaries shown on this plan.

**ANNIS, O'SULLIVAN, VOLLEBEK LTD.**  
 14 Concourse Gate, Suite 509  
 Nepean, Ont. K2E 7S5  
 Phone: (613) 727-0850 / Fax: (613) 727-1079  
 Email: info@annis-osv.com  
 Ontario Land Surveyors (Reg. No. 22258-23 License P1 L16 15 17 C1 R1 G1 S16 P2 D1 SW)



Detail 1 - Not to Scale



Detail 2 - Not to Scale

