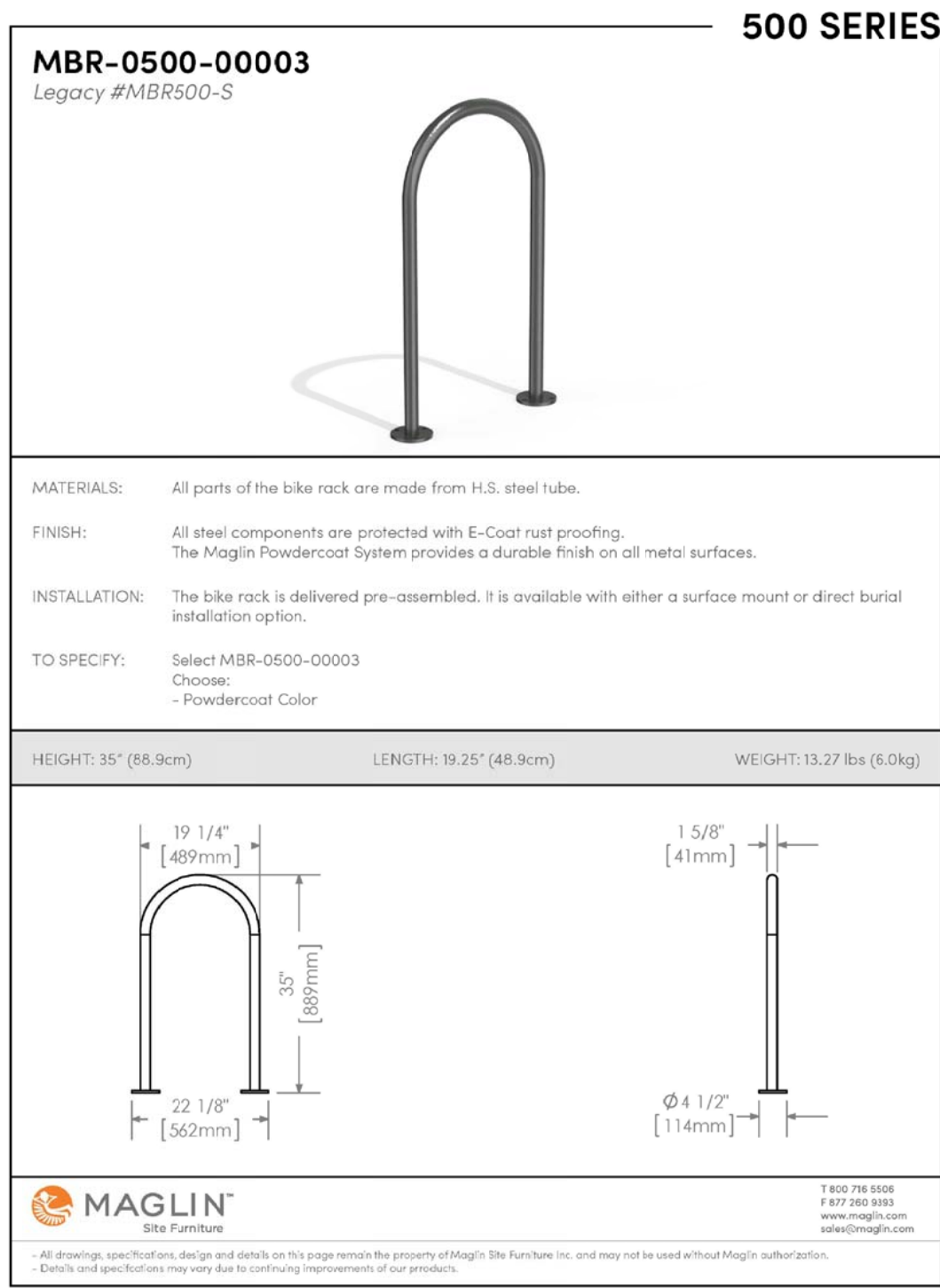


1
L1.01 PLANTING DETAILS NTS



INSTALLATION: SURFACE MOUNT
FINISH: TITANIUM (GLOSS) POWDERCOAT

2
L1.01 BICYCLE RACK NTS

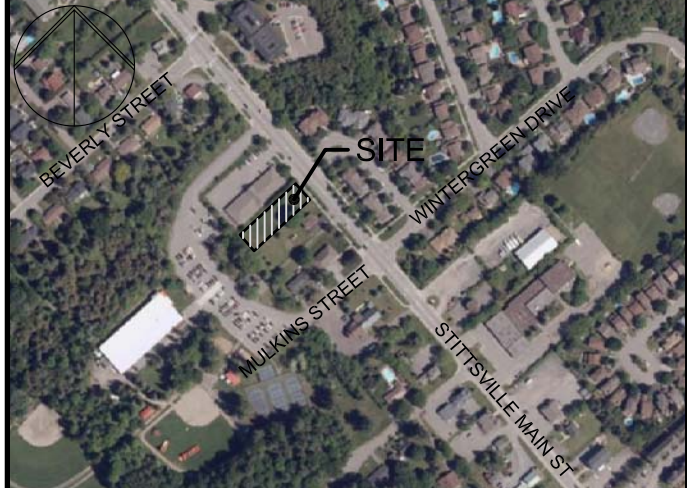
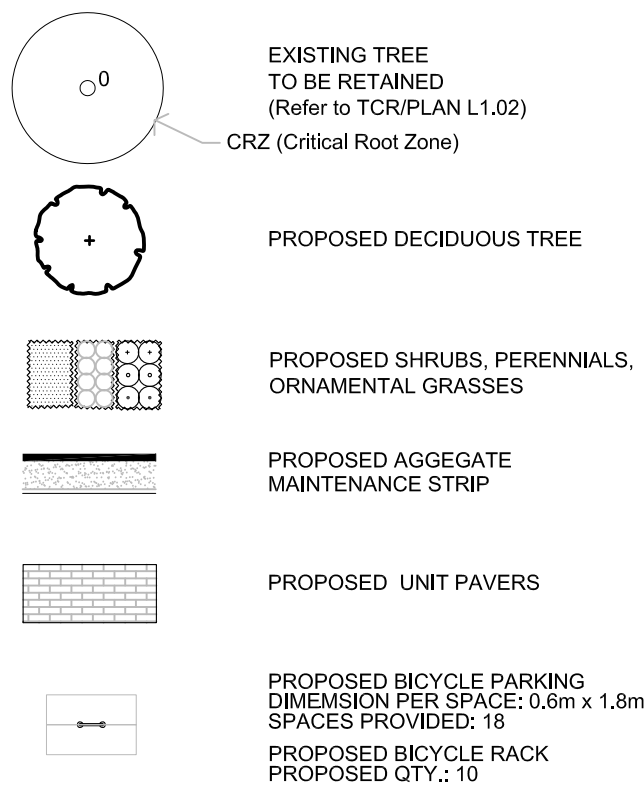
PLANT MATERIAL SCHEDULE

CODE	BOTANICAL NAME	COMMON NAME	QTY.	SIZE	REMARKS / (N) NATIVE
DECIDUOUS TREES					
AC	AMELANCHIER CANADENSIS	SHADBLOW SERVICEBERRY	2	50mm cal	B&B, single-stem / N
AFJ	ACER x FREEMANII JEFFERSRED	AUTUMN BLAZE MAPLE	2	50mm cal	B&B, single-stem / N
CO	CELTIS OCCIDENTALIS	COMMON HACKBERRY	3	50mm cal	B&B, single-stem / N
QM	QUERCUS MACROCARPA	BUR OAK	1	50mm cal	B&B, single-stem / N
QR	QUERCUS RUBRA	RED OAK	1	50mm cal	B&B, single-stem / N
SHRUBS					
HAA	HYDRANGEA ARBORESCENS	ANNABELLE HYDRANGEA	4	50cm ht	potted, 100cm o/c
HPG	HYDRANGEA PANICULATA GRANDIFLORA	PEE GEE HYDRANGEA	7	50cm ht	potted, 100cm o/c
PO	PHYSOCARPUS OPULIFOLIUS	COMMON NINEBARK	12	50cm ht	potted, 100cm o/c / N
RB	ROSA BLANDA	SHRUB ROSE	31	50cm ht	potted, 100cm o/c / N
SJF	SPIRAEA JAPONICA 'FROEBELII'	FROEBEL SPIREA	13	50cm ht	potted, 100cm o/c
PERENNIALS					
Rud	RUDBECKIA fulgida 'Goldsturm'	BLACK-EYED SUSAN	10	15 cm pot	plant 60cm o/c
ORNAMENTAL GRASSES					
Cal	CALAMAGROSTIS x acutiflora 'Karl Foerster'	KARL FOERSTER REED GRASS	37	15cm pot	plant 75cm o/c

GENERAL NOTES

- This drawing shall be read in conjunction with all relevant Architectural, Engineering and related Drawings and Documents.
- Refer to Engineering Drawings for Grading and Servicing.
- Refer to Architectural Drawings for Site layout.
- Contractor shall provide the location(s) of all services/utilities by consulting Municipal Authorities and Utility companies and shall be responsible for adequate protection from damage during construction.
- Plant material shall be No.1 Grade and shall comply with the Metric Guide Specifications For Nursery Stock (latest edition), published by the Canadian Nursery Trades Association.
- Plant Material locations are **Schematic / Approximate only**. Contractor shall stake out locations on site prior to work.
- Contractor shall guarantee all plant material for a period of one (1) full year from the date of final acceptance.
- Shrubs** shall be planted in a continuous prepared bed of 450mm depth planting soil mix covered over with a woven polypropylene weed control fabric (**LANDSCAPE FABRIC-Green-Line by Thrace-LINQ**) and 75mm depth composted pine mulch to finish grade, as specified
- Perennials and Ornamental Grasses** shall be planted in a continuous prepared bed of 450mm depth planting soil mix. (**USE NO WEED CONTROL FABRIC**).
- Sod areas to receive 125mm topsoil. Sod shall be No. 1 quality conforming to the Canadian Nursery Sod Growers Specification.
- Reinstate all areas damaged or disturbed beyond the limit of Work.
- Plant Material substitutions shall not be permitted without written approval from the Consultant.
- Contractor shall advise Consultant a minimum of **48hrs.** prior to proceeding landscape work and any required Field Reviews.
- THIS PLAN HAS BEEN PREPARED FOR MUNICIPAL SITE PLAN APPROVAL ONLY AND MAY NOT BE USED FOR ANY OTHER PURPOSE.**

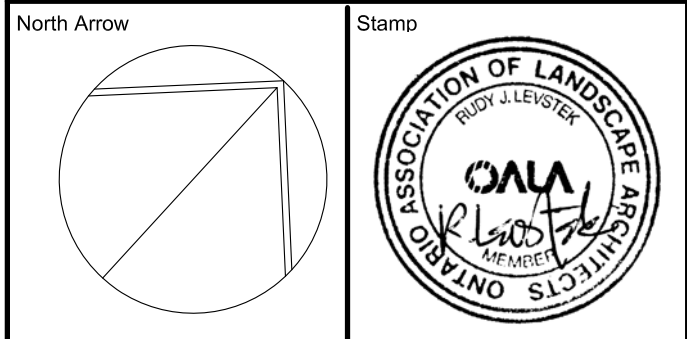
LEGEND / SYMBOL



LOCATION PLAN

FOR APPROVAL ONLY

2.	SEPT.18/24	ISSUE FOR SPA
1.	JULY 18/24	ISSUE FOR ZBA
no.	date	revision



Contractor shall check and verify all dimensions on site and report all errors and/or omissions to the Consultant.

Work to be done in accordance with all applicable codes and by-laws.

Do not scale Drawing.

This Drawing shall not be used for construction until signed by the Consultant.

Copyright reserved. This Drawing is the exclusive property of Levstek Consultants Inc. and shall not be used without consent.

Consultant

LEVSTEK CONSULTANTS
LANDSCAPE ARCHITECTS

5871 Hugh Crescent - Ottawa - Ontario - K0A 2W0
613 - 826 - 0518

Project

1412 STITTSVILLE MAIN STREET
STITTSVILLE, ONTARIO

Drawing Title

LANDSCAPE PLAN

Drawn

Scale 1:150

Project No. 1237

Drawing No. **L1.01**

SCALE 1:150

0 2 4 6 8 10 12m