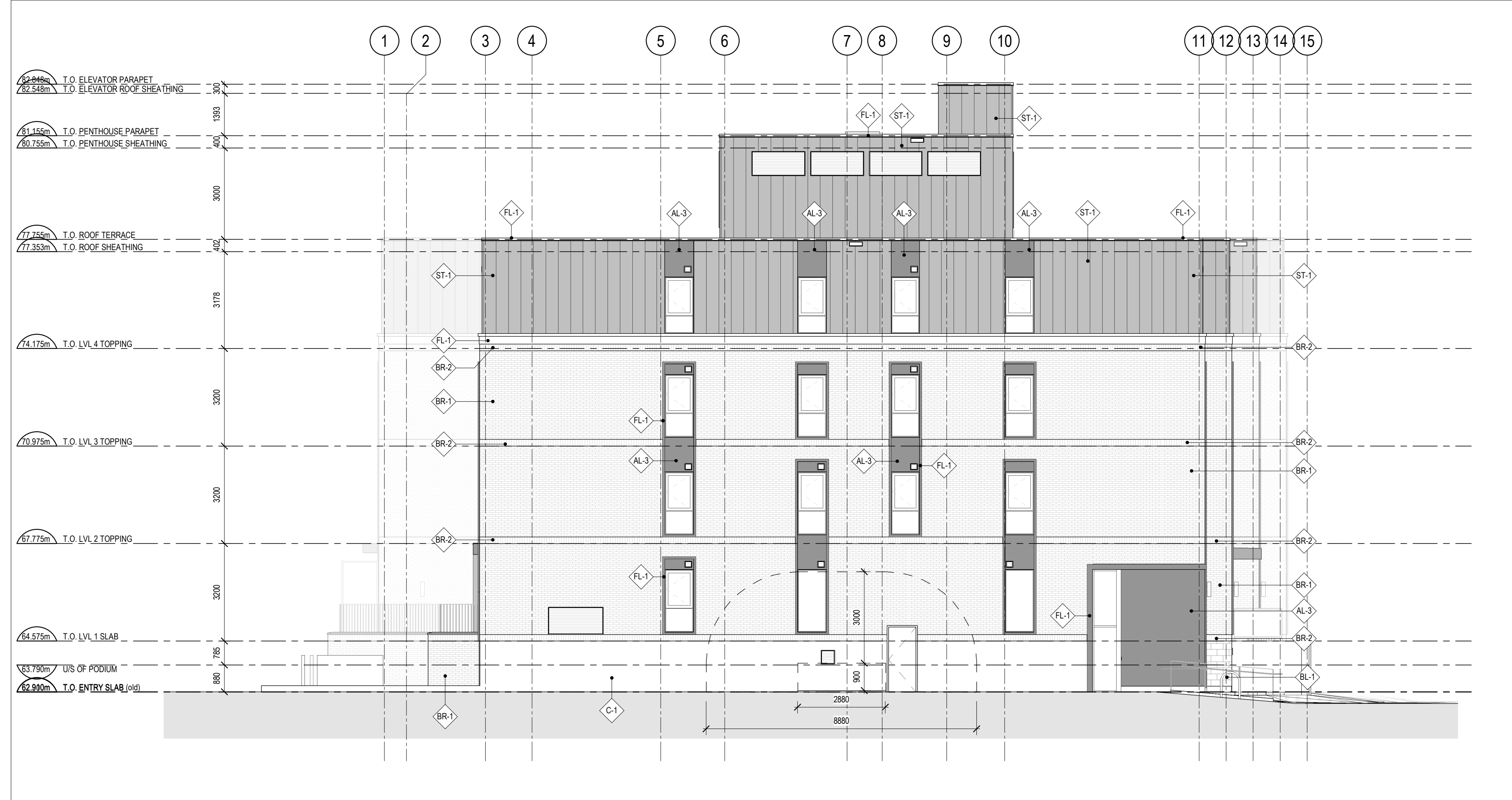




1 WEST ELEVATION
A11 SCALE: 1:100



2 SOUTH ELEVATION
A11 SCALE: 1:100

Allison Hamlin

ALLISON HAMLIN
MANAGER, DEVELOPMENT REVIEW ALL WARDS
PLANNING, DEVELOPMENT & BUILDING SERVICES
DEPARTMENT, CITY OF OTTAWA

APPROVED
By Allison Hamlin at 4:39 pm, Dec 10, 2024

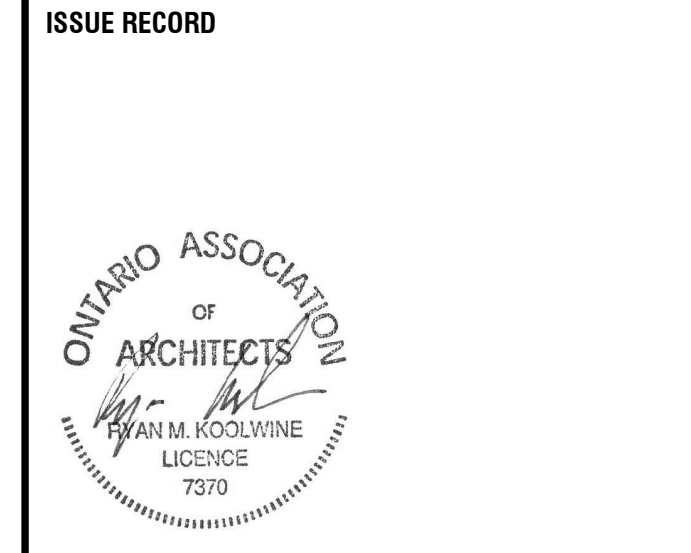
CLADDING LEGEND:

	BRICK COLOUR: RED
	BRICK COLOUR: RED SOLDIER COURSE
	STONE BLOCK
	CONCRETE
	RESERVED
	RESERVED
	ALUMINUM PANEL DARK GREY
	PREFINISHED STEEL CLADDING LIGHT GREY
	PARAPET DARK GREY
	ALUMINUM FLASHING DARK GREY

ALUMINUM COMPOSITE PANEL FIRE RATING GENERAL NOTE:
ALL ALUMINUM COMPOSITE PANELS IN NORTH AND SOUTH FACADE TO BE FIRE RATED PANELS WITH MINERAL FIBER CORE (NO POLYETHYLENE PERMITTED). REFER TO SPECIFICATIONS

- GENERAL ARCHITECTURAL NOTES:**
- This drawing is the property of the Architect and may not be reproduced or used without the expressed consent of the Architect.
 - Drawings are not to be scaled. The Contractor is responsible for checking and verifying all levels and dimensions and shall report all discrepancies to the Architect and obtain clarification prior to commencing work.
 - Upon notice in writing, the Architect will provide written clarification or supplementary information regarding the intent of the Contract Documents.
 - The Architectural drawings are to be read in conjunction with all other Contract Documents including Project Manuals and the Structural, Mechanical and Electrical Drawings.
 - Positions of exposed or finished Mechanical or Electrical devices, fittings and fixtures are indicated on the Architectural Drawings. Locations shown on the Architectural Drawings shall govern over Mechanical and Electrical Drawings. Mechanical and Electrical items not clearly located will be located as directed by the Architect.
 - These documents are not to be used for construction unless specifically noted for such purpose.

16	REISSUED FOR SPA	2024-10-29
7	ISSUED FOR SPA	2024-08-23



project1 studio
Project1 Studio Incorporated
[613.884.3939] | mail@project1studio.ca

10 EMPRESS
10 EMPRESS AVENUE N.
OTTAWA, ON
K1R 7E8

PROJ	SCALE	DRAWN	REVIEWED
2214	NOTED	JH	RMK

ELEVATIONS - WEST & SOUTH

A11