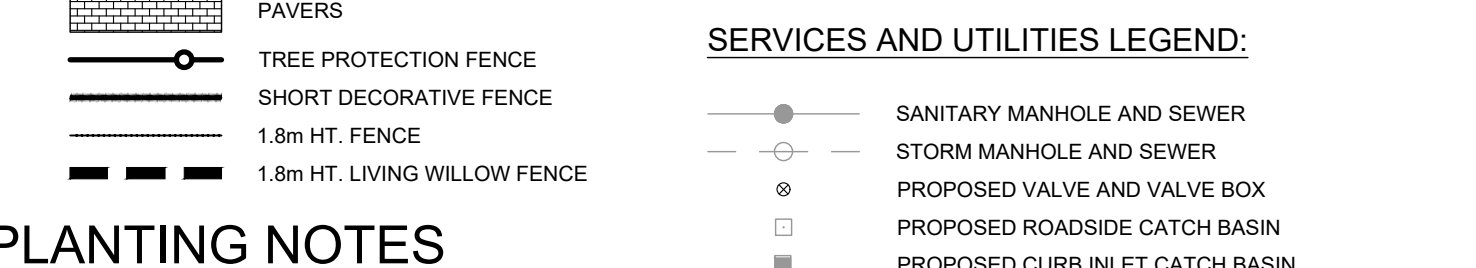
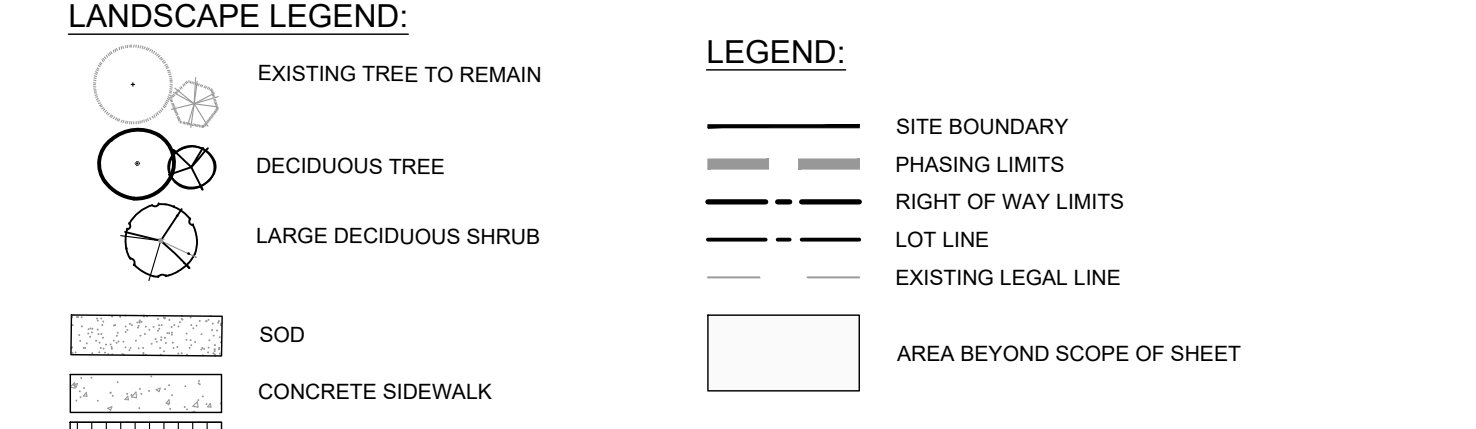
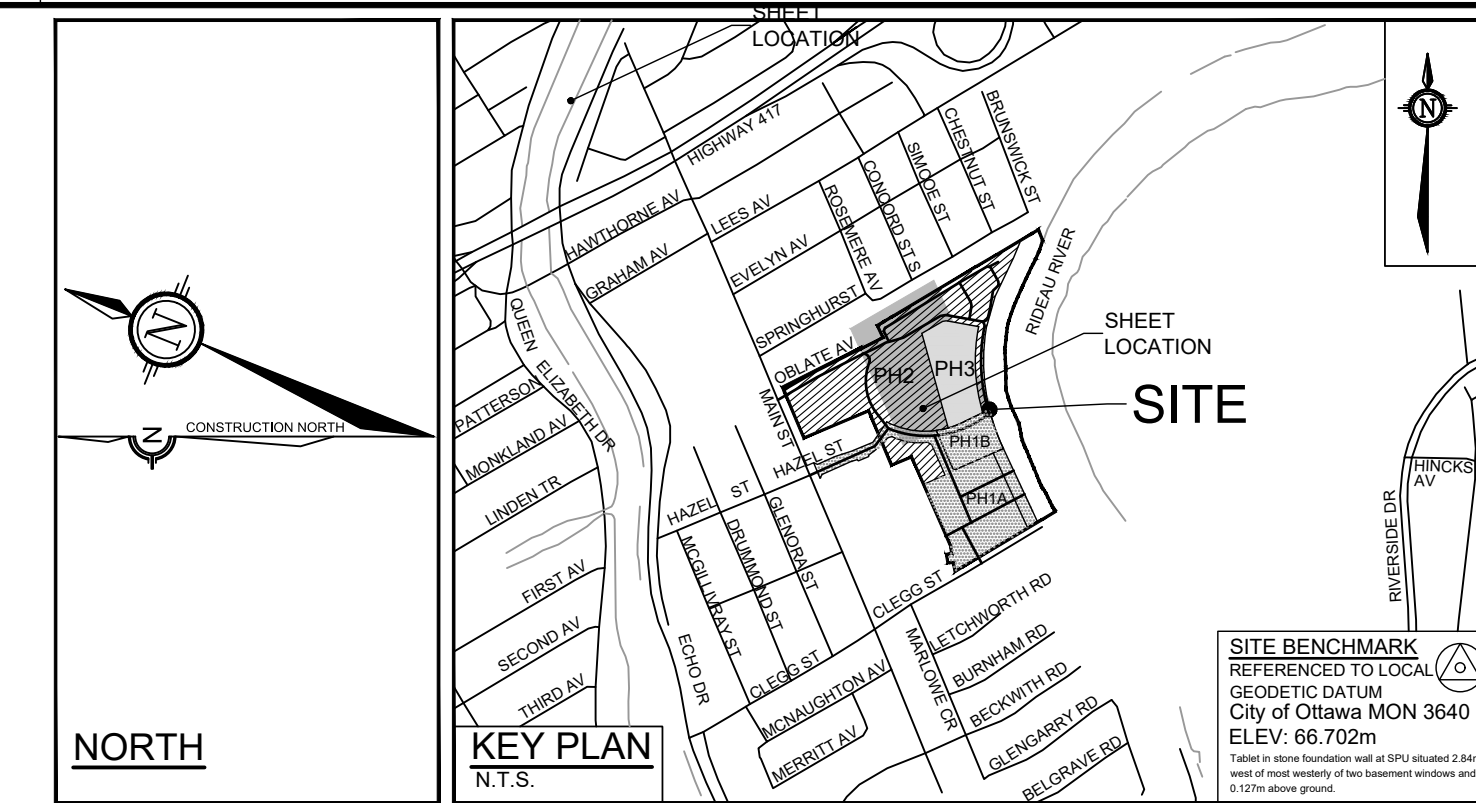


REFER TO DRAWING No. 114025-L3-B

REFER TO DRAWING No. 114025-L3-B



- ### PLANTING NOTES
- This drawing shall be read in conjunction with all relevant Architectural, Engineering, and related drawings and documents.
  - Refer to Engineering Drawings for Grading. Provide drainage as indicated in grading plan. Round all tops and toes of slopes, smoothly. Compact all areas to 95% Standard Proctor Density unless otherwise noted.
  - Refer to Architectural Drawings for site layout.
  - Refer to Engineering Drawings for site servicing.
  - Contractor must contact utility companies for locates prior to excavation or planting.
  - It is essential to use the plans and details in conjunction with the specifications and notes. Some or all of the notes may not apply to the special requirements of a plant species or a planting environment.
  - Existing trees to be retained shall be protected according to the contract detail and specifications.
  - Plant material shall be No. 1 Grade and shall comply with Canadian Standards for Nursery Stock (latest edition) published by the Canadian Nursery Landscape Association. Use plant material with strong fibrous root system free of disease, defects or injuries, and structurally sound. Use trees with straight trunks, well and characteristically branched for species. Obtain approval from consultant of plant material at source prior to digging. All trees and shrubs shall be container grown, potted, WB or B/B, as indicated on Plant List. Bare root planting will only be acceptable for certain species and as approved by the Landscape Architect.
  - Plant material substitutions shall not be permitted without the written approval from the consultant, with 48 hours notice, prior to shipping plant material.
  - Plant locations are schematic / approximate only. Contractor shall stake out locations on site for approval by the Landscape Architect prior to installation. The illustrated number of plants shown in the Planting Plan supersedes the estimated number in the Plant List. Contractor to report any discrepancies to the Landscape Architect prior to installation. Contractor will assume full responsibility if the Landscape Architect is not notified.
  - Shrubs, Perennials, Vines, and Groundcovers shall be planted in a continuous planting bed of 600mm depth with approved topsoil covered with 75mm depth shredded bark mulch.
  - Ensure trees are thoroughly watered following planting. Monitor material and ensure adequate moisture until acceptance.
  - In heavy clay or poorly drained soils, set root ball with root collar 75-100mm higher than finished grade.
  - Sod and/or seed areas to receive 150mm depth topsoil as specified. Sod shall be No. 1 Kentucky Bluegrass Sod grown from minimum number of 3 Kentucky Bluegrass cultivars. Quality and source shall comply with Canadian Standards for Nursery Stock, Section 17, (latest edition) published by the Canadian Nursery Landscape Nursery Landscape Association. Unless otherwise specified, turf is to be maintained by the contractor until a second cutting is accepted by the Landscape Architect.
  - Apply the following mineral fertilizer unless soil tests show other requirements: Sodded areas - (7-24-12) 7% Nitrogen, 24% Phosphorus, 12% Potash at a rate of 250kg/ha. - Planting Beds - (10-52-10) - 10% Nitrogen, 52% Phosphorus, 10% Potash as per manufacturer specifications.
  - Reinstale all areas damaged or disturbed beyond the Limit of Work.

- ### TREE PROTECTION NOTES
- The following protection measures must be implemented for retained trees, both on site and on adjacent sites, prior to any tree removal or site works and maintained for the duration of construction on site:
- Under the guidance of a Landscape Architect or Certified Arborist, erect a fence at the critical root zone (CRZ) of trees where the CRZ is established as being 10 centimetres from the trunk of a tree for every centimetre of trunk diameter at breast height. The CRZ is calculated as DBH x 10cm. Refer to the Tree Protection Fence detail. See plan for fence location.
  - When trees to be removed overlap with the CRZ of trees to be preserved: cut roots at the edge of the CRZ and grind down stumps after tree removals, do not pull out stumps. Ensure there is not pulling or disturbance of the ground within the CRZ.
  - If roots must be cut, roots 20mm or larger should be cut at right angles with clean, sharp horticultural tools without tearing, crushing, or pulling. Refer to City of Ottawa Specification S.P. F-6011 Tree Protection, Excavation of Root Zone.
  - Hand work only where required within the CRZ; absolutely no machinery permitted.
  - Do not place any material or equipment within the CRZ of any tree.
  - Do not attach any signs, notices or posters to any tree.
  - Do not disturb, raise or lower the existing grade within the CRZ without approval.
  - Only tunnel or bore when digging within the CRZ of a tree.
  - Do not damage the root system, trunk, or branches of any tree.
  - Ensure that exhaust fumes from all equipment are directed away from any tree canopy.

114025 PHASE 2 - Plant List L2-B (Rev-6)

| KEY   | QTY | BOTANICAL NAME                                  | COMMON NAME            | SIZE     | COND | SPACING  | NATIVE / NON-NATIVE | OWNER |
|---|-----|---|------------------------|----------|------|----------|---------------------|-------|
| <b>ROW Trees to be installed with Forecourt Townhomes</b>       |     |   |                        |          |      |          |                     |       |
| ARR   | 7   | <i>Acer rubrum 'Franklin'</i>                   | Redpointe Red Maple    | 50mm Cal | WB   | As Shown | C                   | City  |
| COG   | 5   | <i>Celtis occidentalis 'Chicagoan'</i>          | Chicagoan Hackberry    | 50mm Cal | WB   | As Shown | C                   | City  |
| GBA   | 6   | <i>Ginkgo biloba 'Autumn Gold'</i>              | Autumn Gold Ginkgo     | 50mm Cal | WB   | As Shown | E                   | City  |
| MR  | 3   | <i>Malus 'Royaltee'</i>                         | Royaltee Crabapple     | 50mm Cal | WB   | As Shown | C                   | City  |
| NS  | 1   | <i>Nyssa sylvatica</i>                          | Black Gum              | 50mm Cal | WB   | As Shown | P                   | City  |
| <b>ROW Trees to be installed in Future</b>                      |     |   |                        |          |      |          |                     |       |
| ARR   | 2   | <i>Acer rubrum 'Franklin'</i>                   | Redpointe Red Maple    | 50mm Cal | WB   | As Shown | C                   | City  |
| TMH   | 3   | <i>Tilia cordata x mongolica 'Harvest Gold'</i> | Harvest Gold Linden    | 50mm Cal | WB   | As Shown | C                   | City  |
| <b>ROW Planting installed with Subdivision (D07-16-15-0001)</b> |     |   |                        |          |      |          |                     |       |
| GMU   | 3   | <i>Quercus macrocarpa 'Urban Pinnacle'</i>      | Urban Pinnacle Oak     | 50mm Cal | WB   | As Shown | C                   | City  |
| TCC   | 5   | <i>Tilia cordata 'Coram'</i>                    | Corinthian Linden      | 60mm Cal | WB   | As Shown | C                   | City  |
| <b>Deciduous Shrubs</b>   |     |   |                        |          |      |          |                     |       |
| AL  | 6   | <i>Amelanchier laevis</i>                       | Allegheny Serviceberry | 50mm Cal | WB   | As Shown | L                   | City  |

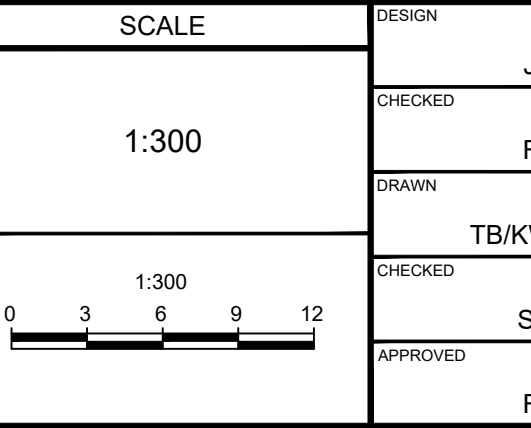
\*NOTE: (L) Local region, (C) Cultivar of local region plant, (P) Provincial, (E) Exotic or non-native

REFER TO DRAWING No. 114025-L1-B

REFER TO DRAWING No. 114025-L1-B

**PRELIMINARY  
NOT FOR  
CONSTRUCTION**

| No. | REVISION   | DATE       | BY |
|-----|--|------------|----|
| 6   | RE-ISSUED WITH FORECOURT TOWNHOMES SPA             | NOV 28/24  | RJ |
| 5   | RE-ISSUED WITH FORECOURT TOWNHOMES SPA             | OCT 17/24  | RJ |
| 4   | REVISED AS PER CITY COMMENTS                       | SEPT 22/17 | JP |
| 3   | REVISED AS PER CITY COMMENTS                       | JUL 11/17  | JP |
| 2   | REVISED AS PER CITY COMMENTS AND ISSUED FOR E.C.A. | MAY 26/17  | JP |
| 1   | ISSUED FOR CITY OF OTTAWA REVIEW                   | NOV 2/11/6 | JP |



FOR REVIEW ONLY

CHECKED: JP  
DRAWN: RJ  
T.B./K.W.  
CHECKED: SC  
APPROVED: RJ



CITY OF OTTAWA  
GREYSTONE VILLAGE  
175 MAIN STREET

DRAWING NAME  
PLANTING PLAN  
PHASE 2 AND 3  
DES OBLATS / PARISH

PROJECT No.: 114025-00  
REV #:  
DRAWING No.: 114025-L2-B

D:\01\114025-00\114025-00\_Landscape\SPA - Subdivision\114025\_LPH2-new.dwg L2 - Dec 03, 2024 - 10:00am - dbarthelemy

D07-16-15-0001 PHASE 2 AND 3