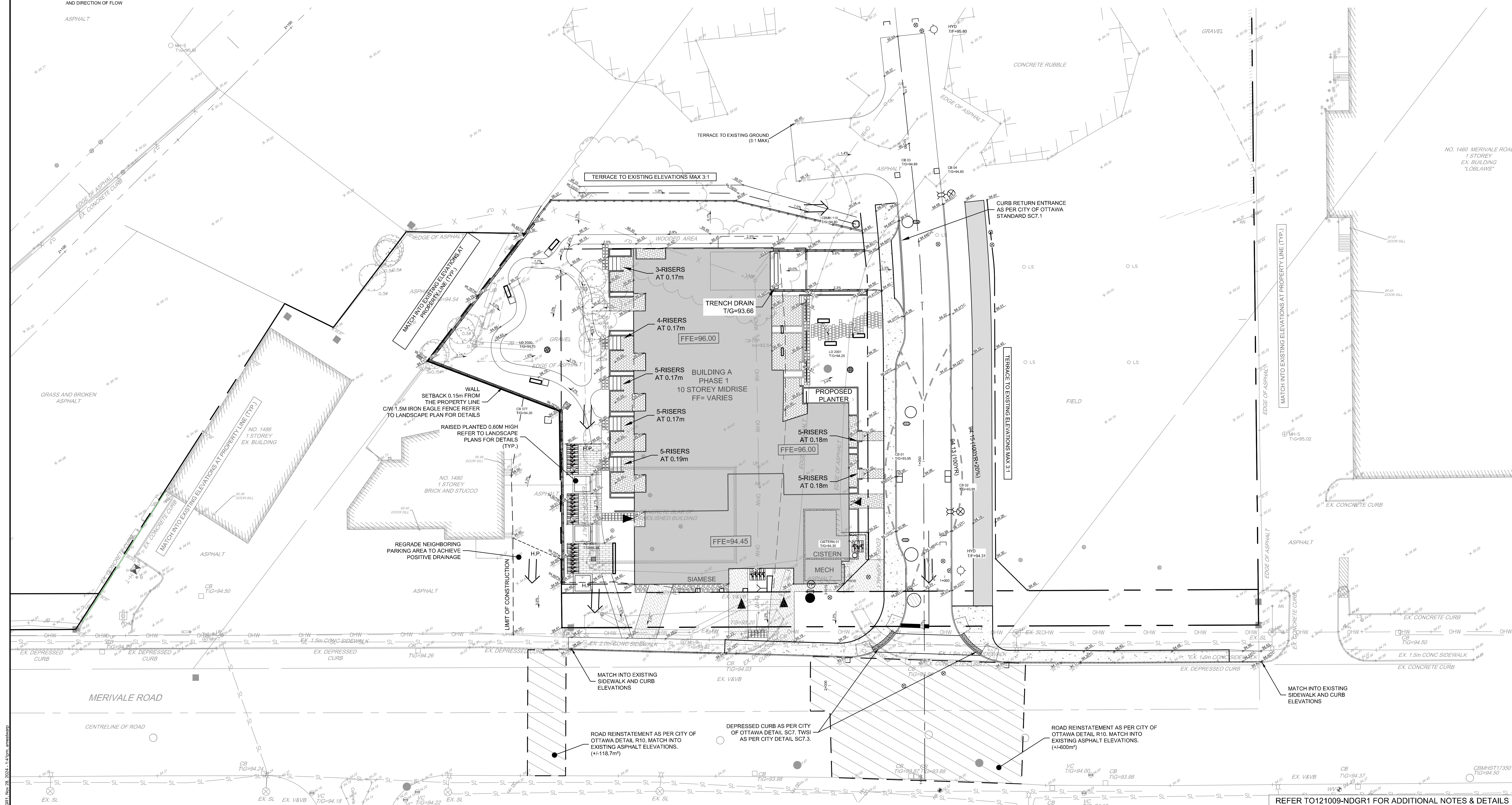
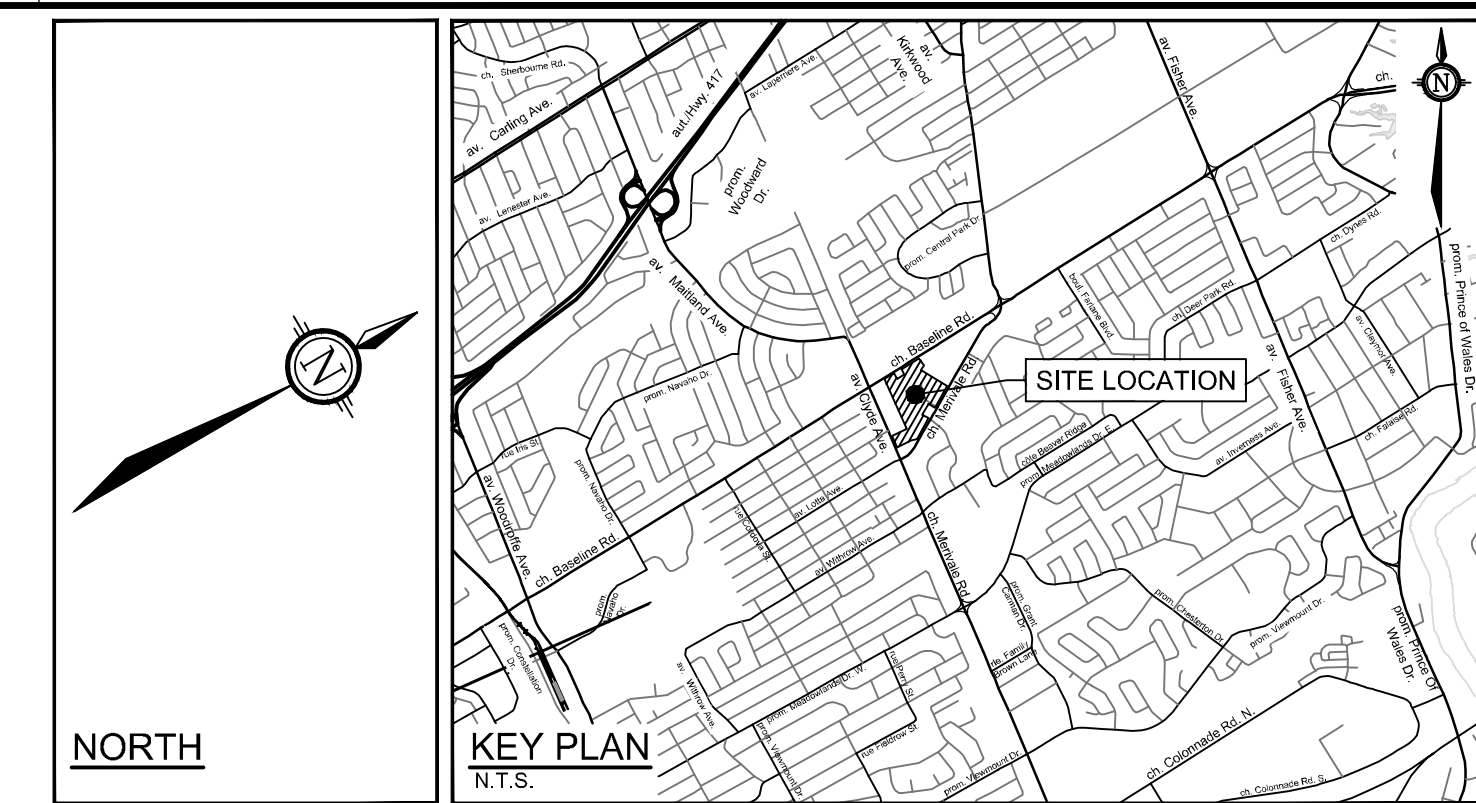


LEGEND

<ul style="list-style-type: none"> --- PROPERTY LINE — PROPOSED CURB — DC — PROPOSED DEPRESSED CURB — FC — PROPOSED FLUSH CURB — PROPOSED RETAINING WALL CW GUARD RAIL — PROPOSED WALKWAY — TACTILE WALKING SURFACE INDICATOR (TWS) PER CITY DETAIL SCT.3 — PROPOSED ELEVATION — EXISTING ELEVATION — PROPOSED SWALE ELEVATION — PROPOSED TOP OF WALL ELEVATION — PROPOSED BOTTOM OF WALL ELEVATION — PROPOSED TOP OF CURB ELEVATION — PROPOSED BEGINNING OF VERTICAL CURVE — PROPOSED END OF VERTICAL CURVE — SWALE CW SUBDRAIN — PROPOSED VALVE AND VALVE BOX — H.P. — PROPOSED HIGH POINT — SWALE CW SUBDRAIN AND DIRECTION OF FLOW 	<ul style="list-style-type: none"> ← 2.0% — TERRACING 3:1 SLOPE MAX (UNLESS OTHERWISE INDICATED) ← SLOPE AND DIRECTION → DIRECTION OF MAJOR OVERLAND FLOW — SURFACE PONDING EXTENTS — PROPOSED CAP — PROPOSED SANITARY SERVICE — PROPOSED STORM SEWER — PROPOSED OGS UNIT — PROPOSED CATCHBASIN MANHOLE — PROPOSED CATCHBASIN — PROPOSED LANDSCAPE DRAIN — PROPOSED AREA DRAIN — PROPOSED TRENCH DRAIN — PROPOSED SIAMESE CONNECTION — PROPOSED HYDRANT & VALVE — PROPOSED VALVE AND VALVE BOX — PROPOSED BUILDING ENTRANCE 	<ul style="list-style-type: none"> ★ BOREHOLE LOCATION (REFER TO GEOTECH REPORT) — EXISTING UTILITY POLE CW GUY WIRES — EXISTING VALVE & VALVE CHAMBER — EXISTING HYDRANT CW VALVE — EXISTING SANITARY MANHOLE — EXISTING STORM MANHOLE — EXISTING CATCHBASIN — EXISTING STREETLIGHT — EXISTING PARKING LOT SIGNAGE
---	--	--



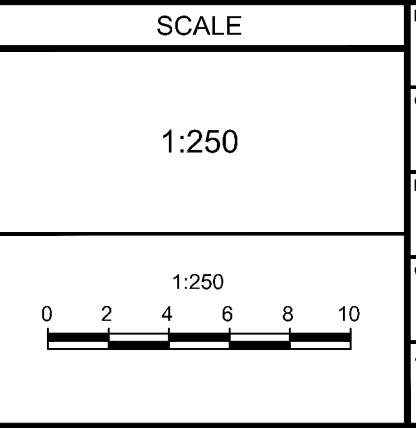
NOTE:
THE POSITION OF ALL POLE LINES, CONDUITS, WATERMANS, SEWERS AND OTHER UNDERGROUND AND OVERGROUND UTILITIES AND STRUCTURES IS NOT NECESSARILY SHOWN ON THE CONTRACT DRAWINGS, AND WHERE SHOWN, THE ACCURACY OF THE POSITION OF SUCH UTILITIES AND STRUCTURES IS NOT GUARANTEED. BEFORE STARTING WORK, DETERMINE THE EXACT LOCATION OF ALL SUCH UTILITIES AND STRUCTURES AND ASSUME ALL LIABILITY FOR DAMAGE TO THEM.

CLARIDGE HOMES
CLARIDGE HOMES
505 PRESTON STREET,
2ND FLOOR
OTTAWA, ONTARIO
K1S 4N7



NOT FOR CONSTRUCTION

No.	REVISION	DATE	BY
6.	REVISED PER CITY COMMENTS	NOV 29/2024	GJM
5.	REVISED PER CITY COMMENTS	SEPT 27/2024	GJM
4.	REVISED PER CITY COMMENTS	MAR 21/2024	GJM
3.	REISSUED PHASE 1 ONLY	OCT 27/2023	GJM
2.	REVISED AND ISSUED FOR CITY APPROVAL	DEC 09/2022	GJM
1.	ISSUED WITH SITE PLAN APPLICATION	SEPT 03/2021	JAG



DESIGN: ARM

CHECKED: GJM

DRAWN: C.J.F./ARM

CHECKED: ARM

APPROVED: GJM

PROFESSIONAL ENGINEER
A.R. MESTWARP
10021694
PROVINCE OF ONTARIO

PROFESSIONAL LANDSCAPE ARCHITECT
G.J. McDONALD
NOV. 23, 2022
PROVINCE OF ONTARIO

NOVATECH
Engineers, Planners & Landscape Architects
Suite 200, 240 Michael Cowpland Drive
Ottawa, Ontario, Canada K2M 1P6
Telephone: (613) 254-9643
Facsimile: (613) 254-5867
Website: www.novatech-eng.com

LOCATION
1500 MERIVALE
1500 MERIVALE, CITY OF OTTAWA

DRAWING NAME
GRADING PLAN
(PHASE 1)

PROJECT No.: 121009

REV: REV06

DRAWING No.: 121009-GR1

CITY PLAN No. 18612