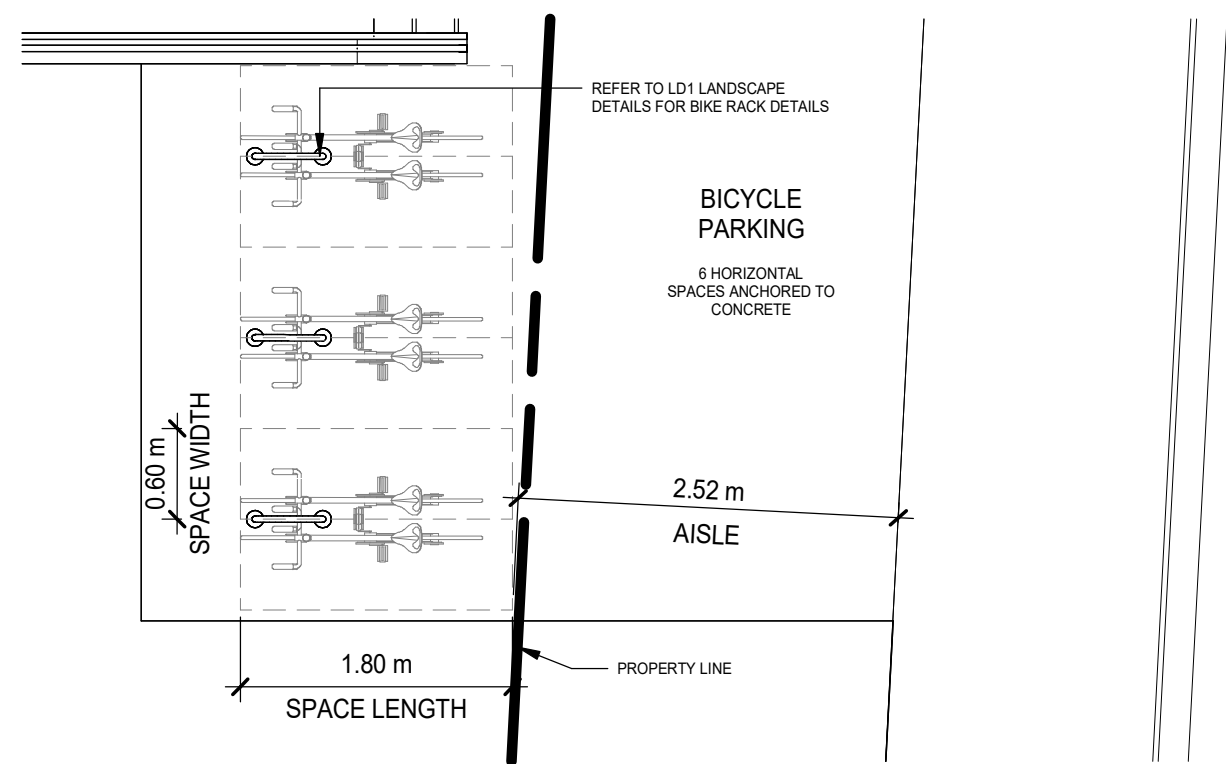
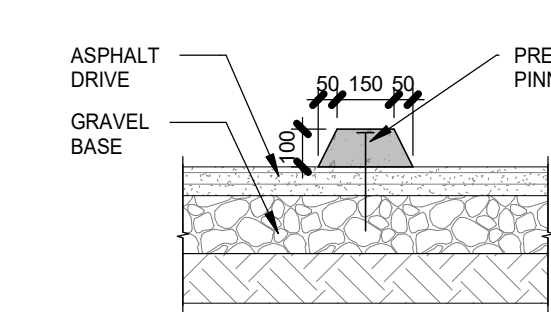


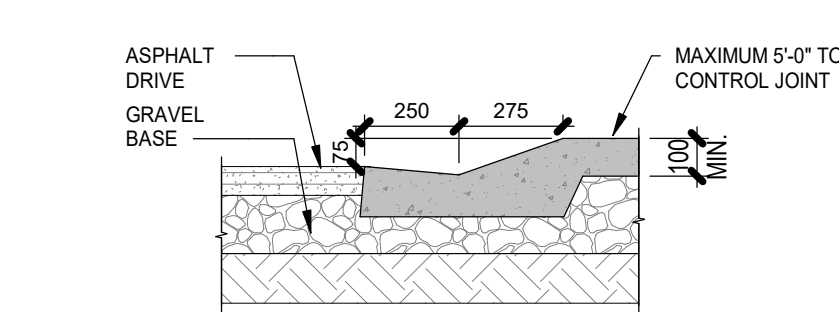
8 EXTERIOR BIKE RACKS - REAR ENTRANCE  
DP10-02 SCALE: 1:50



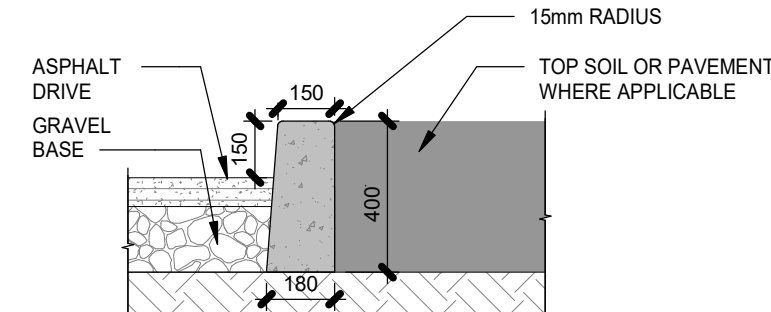
9 EXTERIOR BIKE RACKS - HEMLOCK ROAD  
DP10-02 SCALE: 1:50



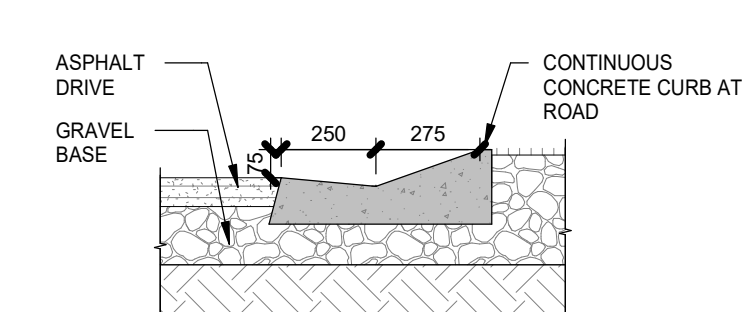
3 WHEEL STOP DETAIL  
DP10-02 SCALE: 1:20



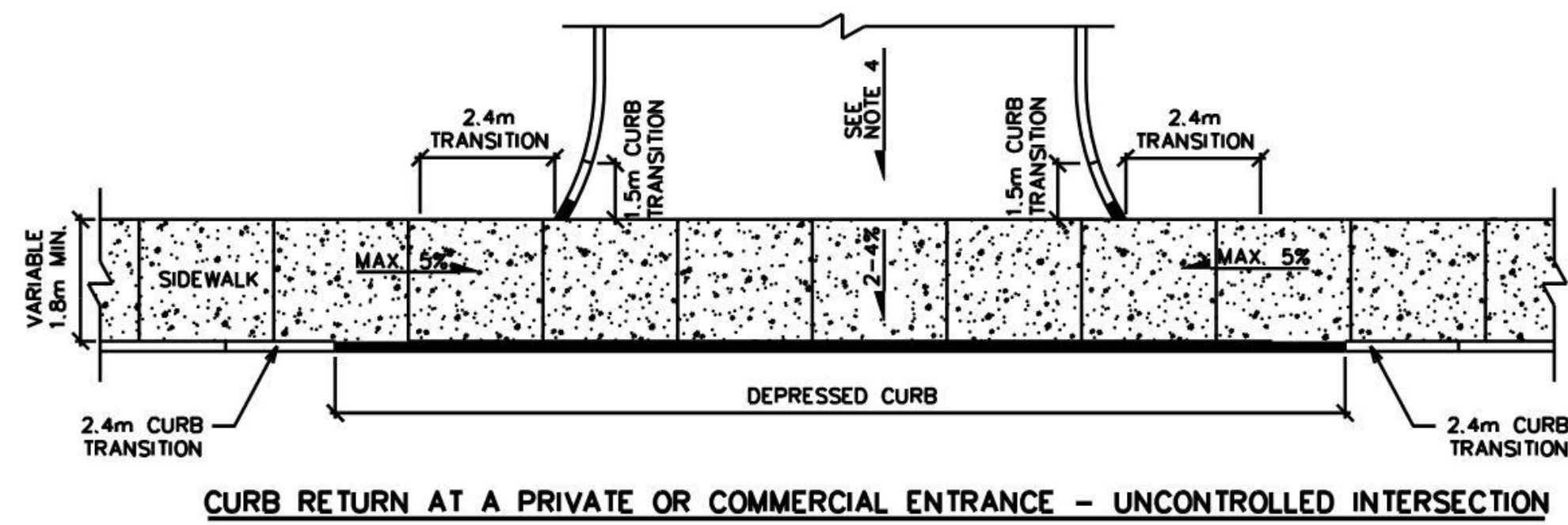
4 ROLLED CURB LANDSCAPE DETAIL  
DP10-02 SCALE: 1:20



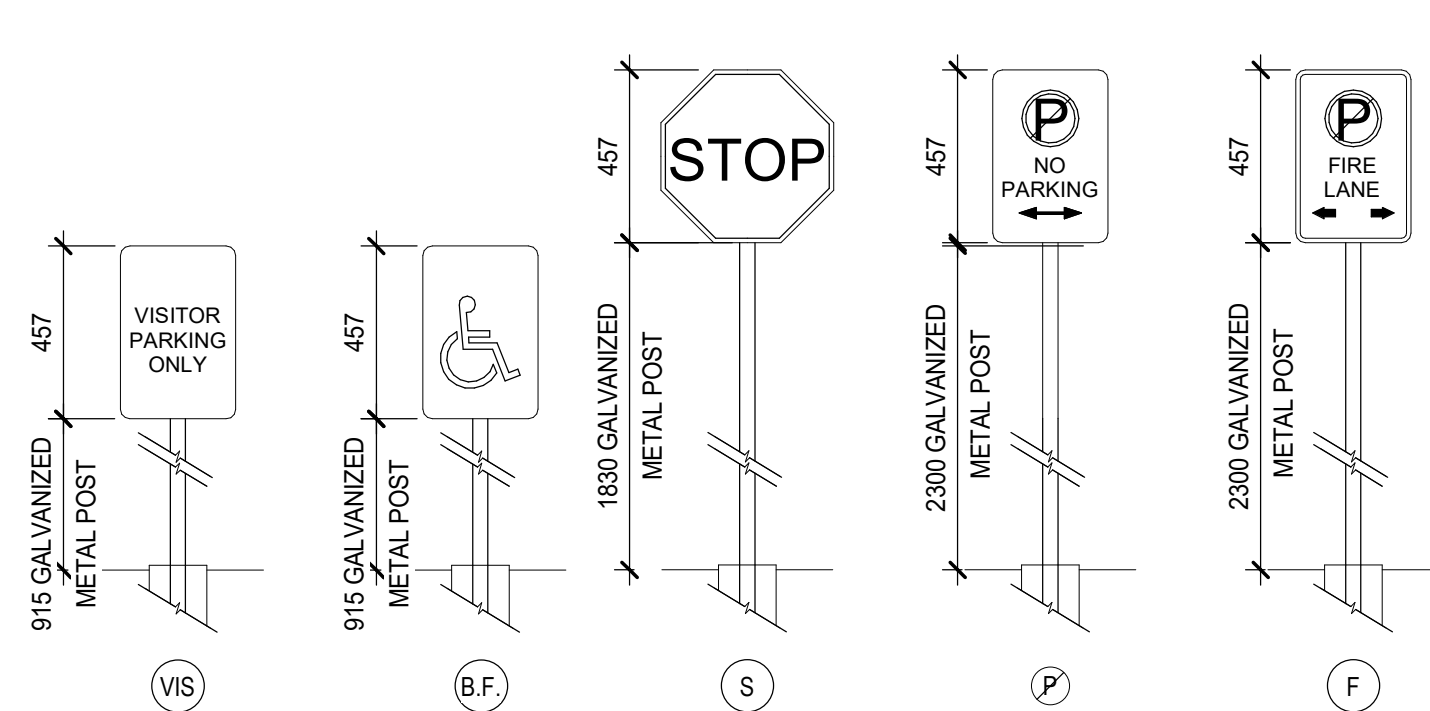
5 RAISED CURB LANDSCAPE DETAIL  
DP10-02 SCALE: 1:20



6 ROLLED CURB ASPHALT DETAIL  
DP10-02 SCALE: 1:20



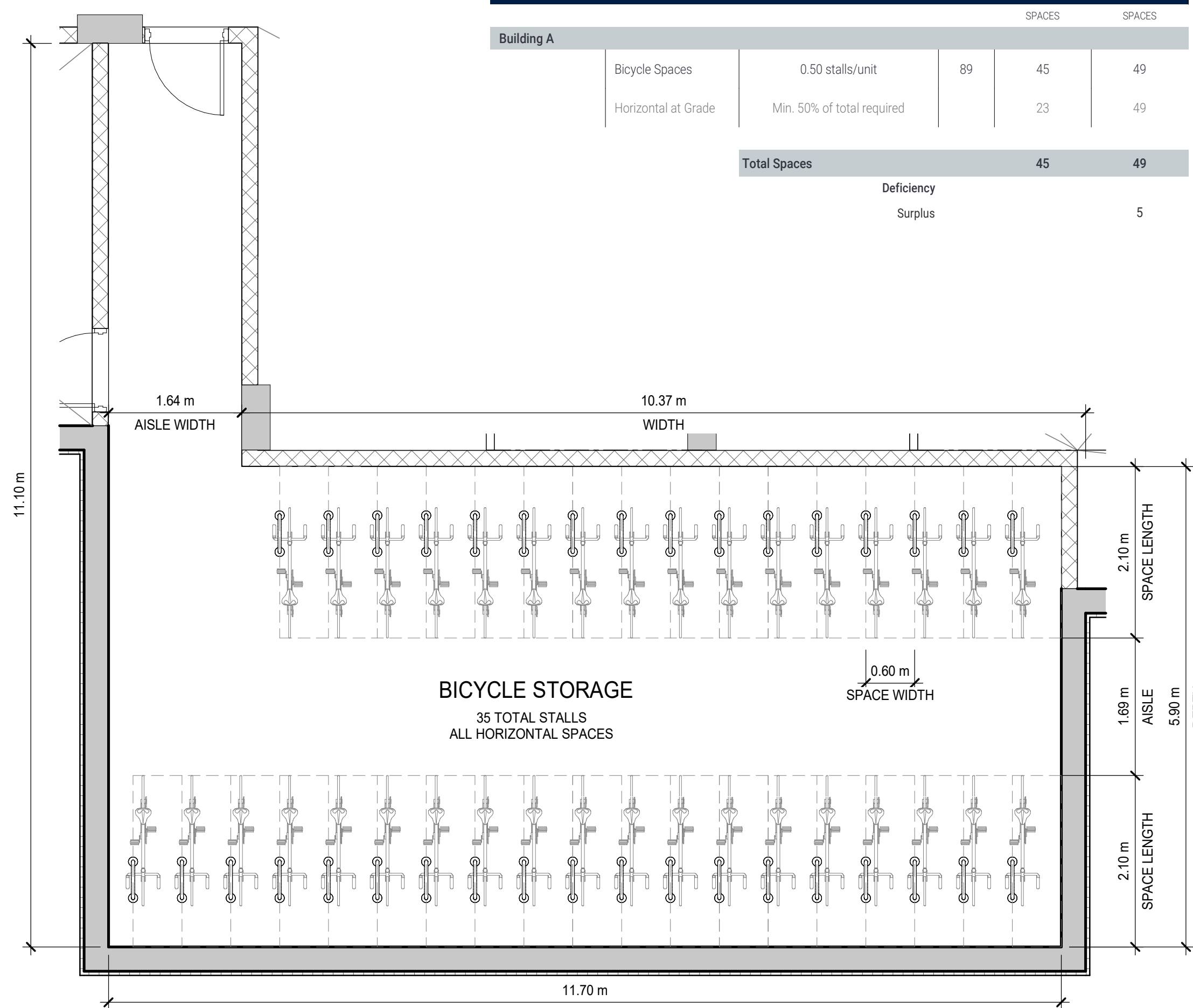
CITY DETAIL SC7.1



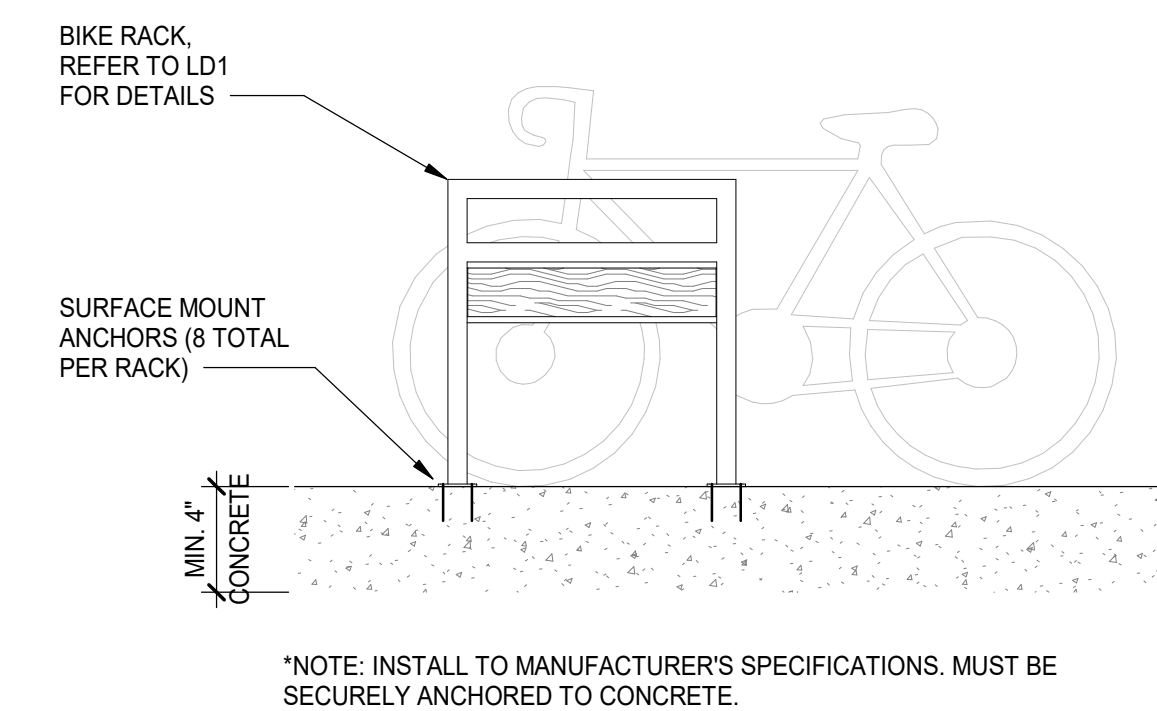
2 SITE SIGNAGE  
DP10-02 SCALE: 1:20

Bicycle Parking

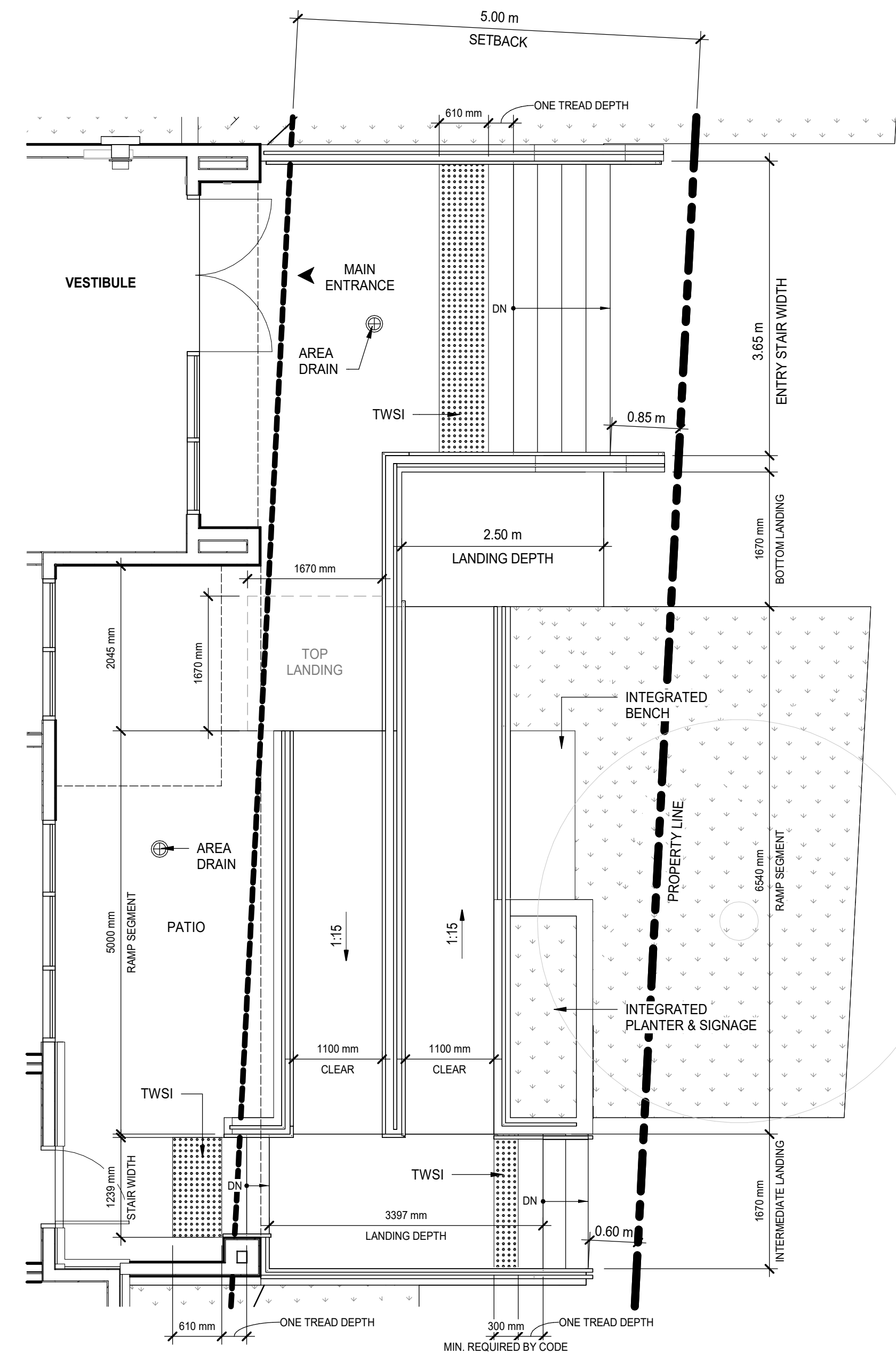
Building A	TYPE	RATE	UNITS		DEFICIENCY	SURPLUS
			REQUIRED	PROVIDED		
	Bicycle Spaces	0.50 stalls/unit	89	45	44	
	Horizontal at Grade	Min. 50% of total required		23	23	
	<b>Total Spaces</b>			<b>45</b>	<b>49</b>	
						5



7 UNDERGROUND BICYCLE STORAGE  
DP10-02 SCALE: 1:50



11 BICYCLE RACK DETAIL TO CONCRETE  
DP10-02 SCALE: 1:20



1 MAIN ENTRANCE STAIR & RAMP ENLARGED PLAN  
DP10-02 SCALE: 1:50

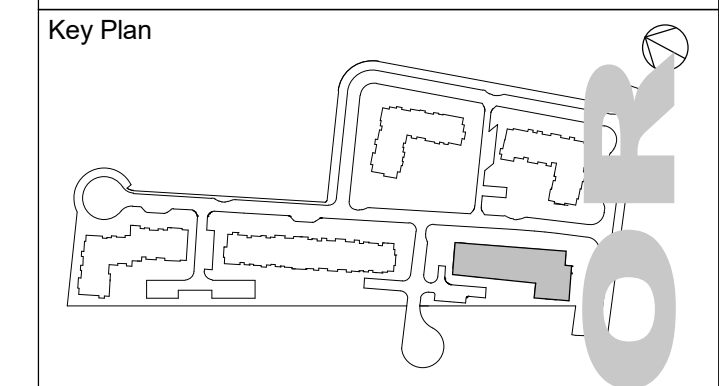
DATE	ISSUED FOR	REV
2023-12-20	PRE-SPA REVIEW	A
2024-03-05	PRE-SPA REVIEW	B
2024-05-21	PRE-SPA REVIEW	C
2024-08-13	SPA SUBMISSION	D

**Rohit**  
Bold Goes Further

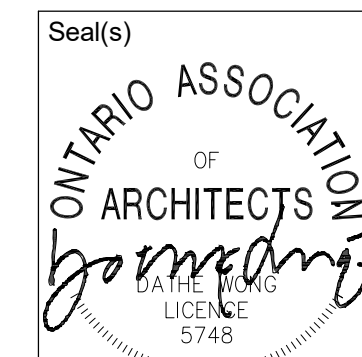
This drawing has been prepared solely for the use of ROHIT COMMUNITIES and there are no representations of any kind made by NORR Architects Engineers Planners to any party with whom NORR Architects Engineers Planners has not entered into a contract.

This drawing shall not be used for construction purposes until the seal appearing hereon is signed and dated by the Architect or Engineer.

Project Component  
SITE PLAN CONTROL APPLICATION



Consultants  
Civil: Arcadis Professional Services (Canada) Inc.  
Landscape: Arcadis Professional Services (Canada) Inc.  
Architecture: NORR Architects Engineers Planners  
Structural: Cunliffe & Associates  
Mechanical: Goodkey, Weedmark & Associates Ltd.  
Electrical: Goodkey, Weedmark & Associates Ltd.  
Owner: Rohit at Wateridge S Ltd.



**NORR**

NORR Architects & Engineers Ltd.

55 Murray Street, Suite 600  
Ottawa, ON, Canada K1N 5M3  
norr.com

Project Manager: M.EISELEN  
Project Leader: O.BREYTENBACH  
Checked: E.FAULKNER

Client: **ROHIT COMMUNITIES**

550 91 ST SW #101, EDMONTON, AB T6X 0V1

Project: **Wateridge Village Block 5**

1255 HEMLOCK ROAD  
OTTAWA, ON

Drawing Title: **ENLARGED PLANS, BICYCLE & SITE DETAILS**

Scale: As indicated

Project No.: NCCA22-0243

Drawing No.: **DP10-02**

PRELIMINARY - NOT FOR CONSTRUCTION

D07-12-24-0090