

266 Park Street Ottawa ON				
Soil Volume Area, Tree Quantity and Size	Tree Quantity	OTTAWA Target Soil Volume (m <sup>3</sup> )	Design Soil Volume	Soil Adequacy percentage
<b>AREA A - 2 Ornamental trees</b>				
plant bed (50 sq m x 0.4 metre deep)	2	18.0	20.0	111.11%
<b>AREA B - 1 small ornamental tree</b>				
plant bed (5.5 sq m x 0.9 metre deep)	1	5.0	5.0	99.00%
<b>AREA C - 1 large tree</b>				
plant bed (75 sq m x 0.4 metre deep)	1	30.0	30.0	100.00%

\* Small ornamental trees with growth to 8-15cm DBH, columnar conifers calculated using 'How much soil to grow a big tree' by DeepRoot as a guide

ID	Qty	Botanical Name	Common Name	Scheduled Size	Remarks
<b>Small Ornamental trees (Up to 6m ht.)</b>					
AcB	1	Amelanchier canadensis 'Ballerina'	Ballerina Serviceberry	50mm cal.	WB, Staked
GbU	1	Ginkgo biloba 'Umbrella'	Globe Ginkgo	45mm cal.	WB, Staked
MrB	1	Malus 'Royal Beauty'	Royal Beauty Crab Apple	50mm cal.	WB, Staked
<b>Large Tree</b>					
GtS	1				
<b>Perennials</b>					
PvA	25	Sun Flowering Perennials	Low Flowering Perennials	1 gallon Pot	60cm o.c.
PvB	35	Low Flowering Perennials	Medium to tall Flowering Perennials	1 gallon Pot	60cm o.c.
PvC	10	Calamagrostis acutifolia 'Karl Foerster'	Karl Foerster Feather Reed Grass	1 gallon Pot	80cm o.c.

**LEGEND**

- EXISTING VEGETATION TO REMAIN
- CRITICAL ROOT ZONE
- TREE PROTECTION FENCE
- PROPOSED PLANTING
- SOIL VOLUME AREAS ID
- PEASTONE
- PROPOSED PEASTONE MAINTENANCE EDGE
- PROPOSED STANDARD PAVERS
- PROPERTY FENCE



*Andrew McCreight*  
**ANDREW MCCREIGHT**  
 MANAGER, DEVELOPMENT REVIEW CENTRAL  
 PLANNING, DEVELOPMENT & BUILDING SERVICES  
 DEVELOPMENT DEPARTMENT, CITY OF OTTAWA

**APPROVED**  
 By Andrew McCreight at 11:47 am, Nov 01, 2024

PLAN TO BE READ IN CONJUNCTION WITH 'TREE CONSERVATION REPORT FOR 266 Park Street OTTAWA ON' MARCH 20, 2023 BY Kevin Myers, MFC ISA Certified Arborist ©, ON-2907A Dendron Forestry Services

THIS PLAN IS ISSUED FOR SITE PLAN CONTROL SUBMISSION ONLY.  
 ADDITIONAL DETAILING AND SPECIFICATIONS ARE REQUIRED PRIOR TO TENDERING AND CONSTRUCTION.

**GENERAL NOTES**

- All general site information and conditions compiled from existing plans, surveys and consultant's field notes. Report all discrepancies prior to any work. No responsibility is born by the Consultant for unknown subsurface conditions.
- The location of the utilities is approximate only, and the exact location should be determined by consulting the municipal authorities and utility companies concerned. The Contractor shall prove the location of utilities and shall be responsible for adequate protection from damage.
- All dimensions shown are to be verified on site prior to any construction. No deviations are to be made from the layouts as shown on this plan without prior consultation with the Landscape Architect and Owner.
- No other trees to be removed without prior approval by Landscape Architect.

No.	ISSUE	DATE
7		
6		
5		
4	Re-issued for Site Plan Control	Oct. 18/24
3	Re-issued for Site Plan Control	Sep. 09/24
2	Re-issued for Site Plan Control	Sep. 13/23
1	Issued for Site Plan Control	Mar. 30/23

SCALE: 1:100

**Ruhland & Associates Ltd**  
 200-1750 Courtwood Crescent, Ottawa, Ontario K2C 2B5  
 P (613) 232-4744 x 200 F (613) 232-1119 info@ruhl.ca www.ruhl.ca

PROJECT NORTH:

PROFESSIONAL STAMP:

PROFESSIONAL STAMP:

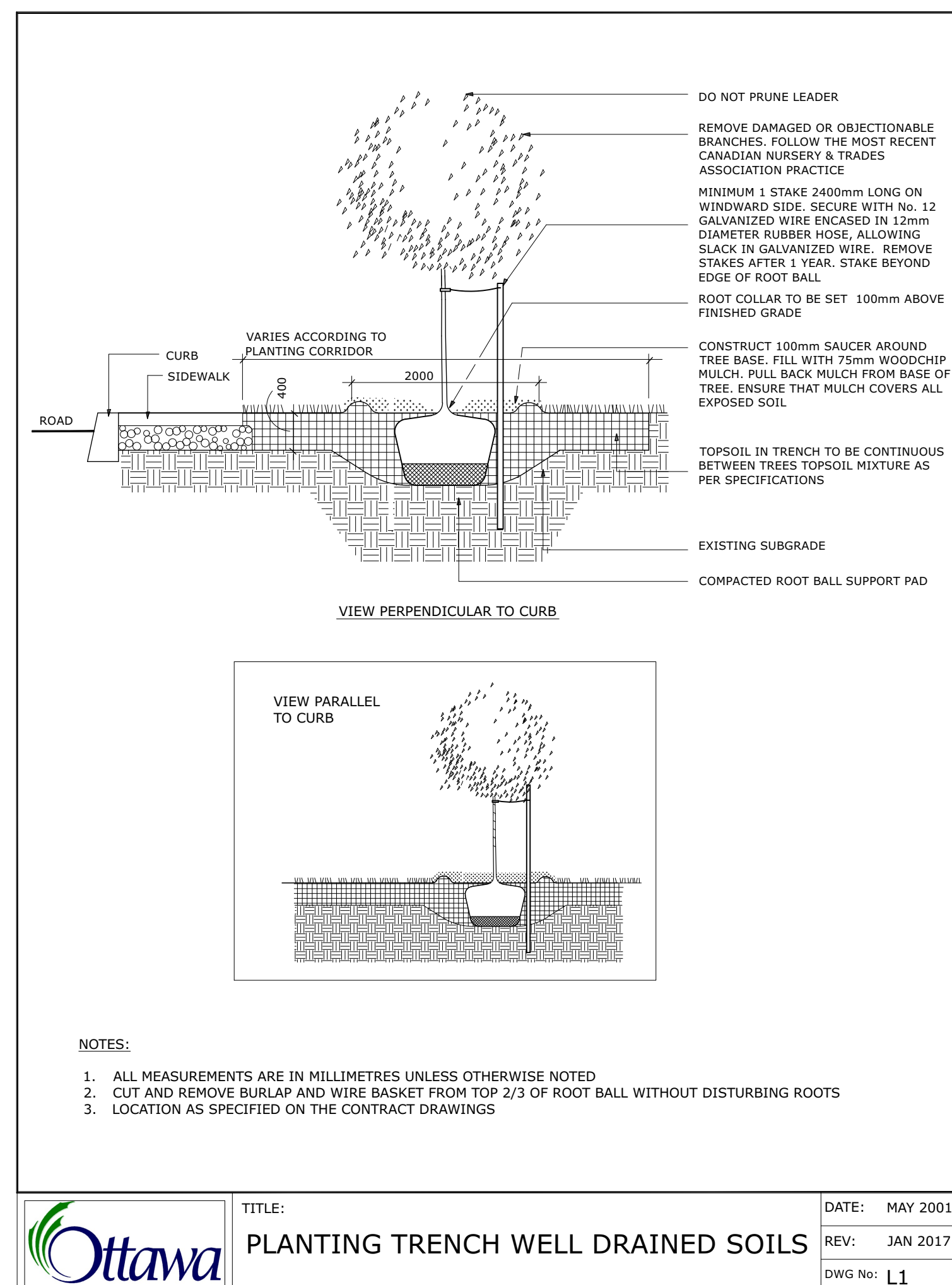
PROJECT: **266 Park Street OTTAWA ON**

DRAWING: **LANDSCAPE PLAN**

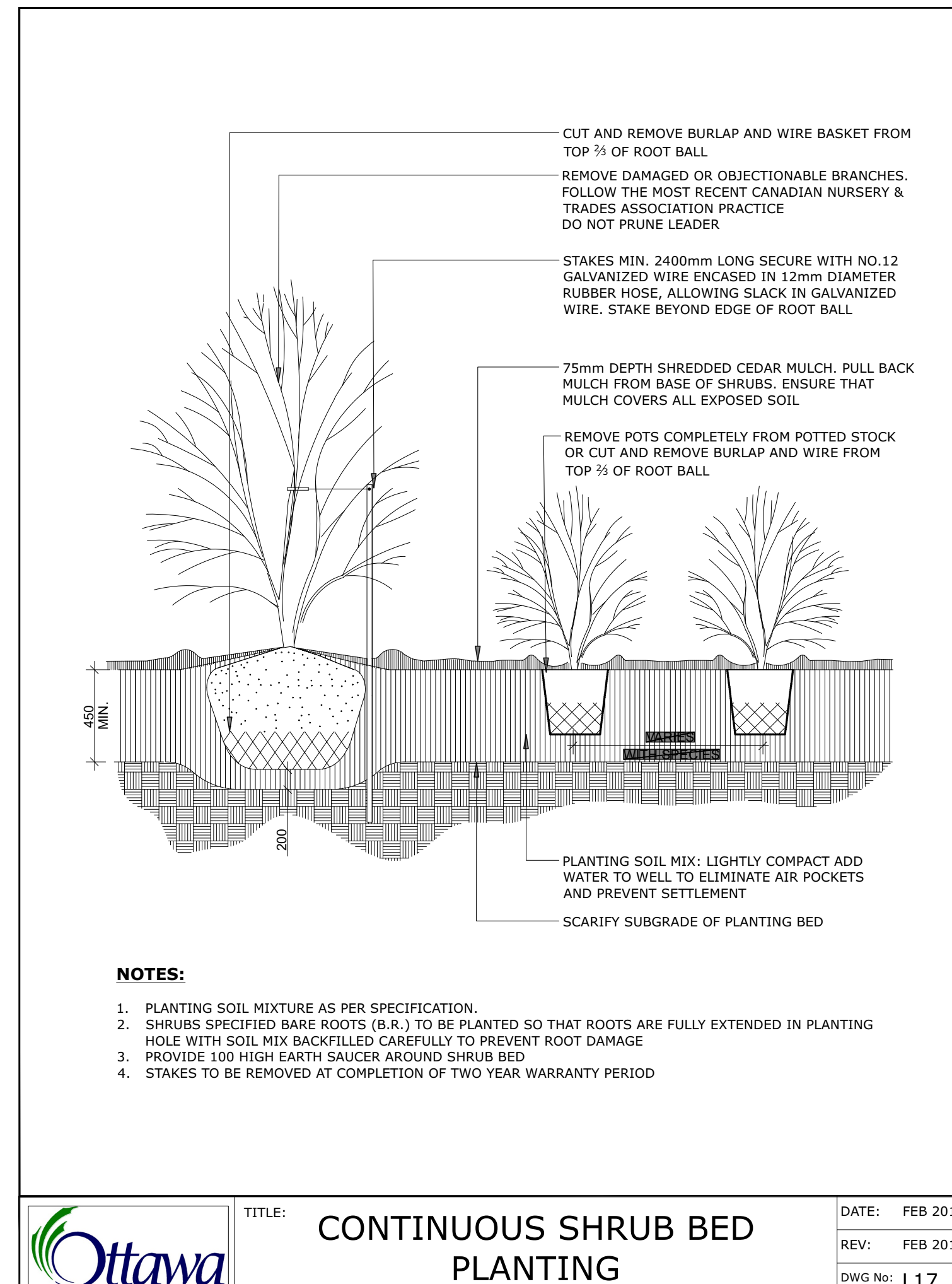
DESIGN: M.R.	DRAWING NO: <b>L-01</b>
DRAWN: M.M.	G-C NO:
CHECKED: M.R.	
PLOTTED:	

**TREE SOIL VOLUME REQUIREMENTS:**

- STANDARD TREE SOIL VOLUMES QUANTITIES INCLUDE THE TOP 900-1000mm OF SOIL/EXISTING SUBSOIL LAYER TO CALCULATE TOTAL SOIL VOLUMES REQUIRED BY CITY OF OTTAWA FOR SUSTAINABLE TREE GROWTH. WHERE LARGER SOFT AREAS ARE AVAILABLE, THE TOP 400-500mm LAYER IS USED TO CALCULATE SOIL VOLUMES.
- WHERE EXISTING MATERIAL BELOW THE SPECIFIED TOPSOIL IS NOT CONDUSIVE TO TREE GROWTH, AN ADDITIONAL LAYER OF PLANTING MEDIUM IS TO BE INSTALLED BELOW SPECIFIED TOPSOIL DEPTH TO OBTAIN 900-1000mm SOIL VOLUME DEPTH REQUIRED.
- REFER TO SOIL VOLUME CHART AND PLANS FOR AREA WHERE TREE SOIL VOLUMES ARE REQUIRED.



**Ottawa** TITLE: PLANTING TRENCH WELL DRAINED SOILS DATE: MAY 2001  
 REV: JAN 2017  
 DWG No: L1



**Ottawa** TITLE: CONTINUOUS SHRUB BED PLANTING DATE: FEB 2013  
 REV: FEB 2014  
 DWG No: L17

*Andrew McCreight*

**ANDREW MCCREIGHT**  
 MANAGER, DEVELOPMENT REVIEW CENTRAL  
 PLANNING, DEVELOPMENT & BUILDING SERVICES  
 DEVELOPMENT DEPARTMENT, CITY OF OTTAWA

**APPROVED**  
 By Andrew McCreight at 11:47 am, Nov 01, 2024

7		
6		
5		
4	Re-issued for Site Plan Control	Oct. 18/24
3	Re-issued for Site Plan Control	Sep. 09/24
2	Re-issued for Site Plan Control	Sep. 13/23
1	Issued for Site Plan Control	Mar. 30/23
No.	ISSUE	DATE

SCALE:

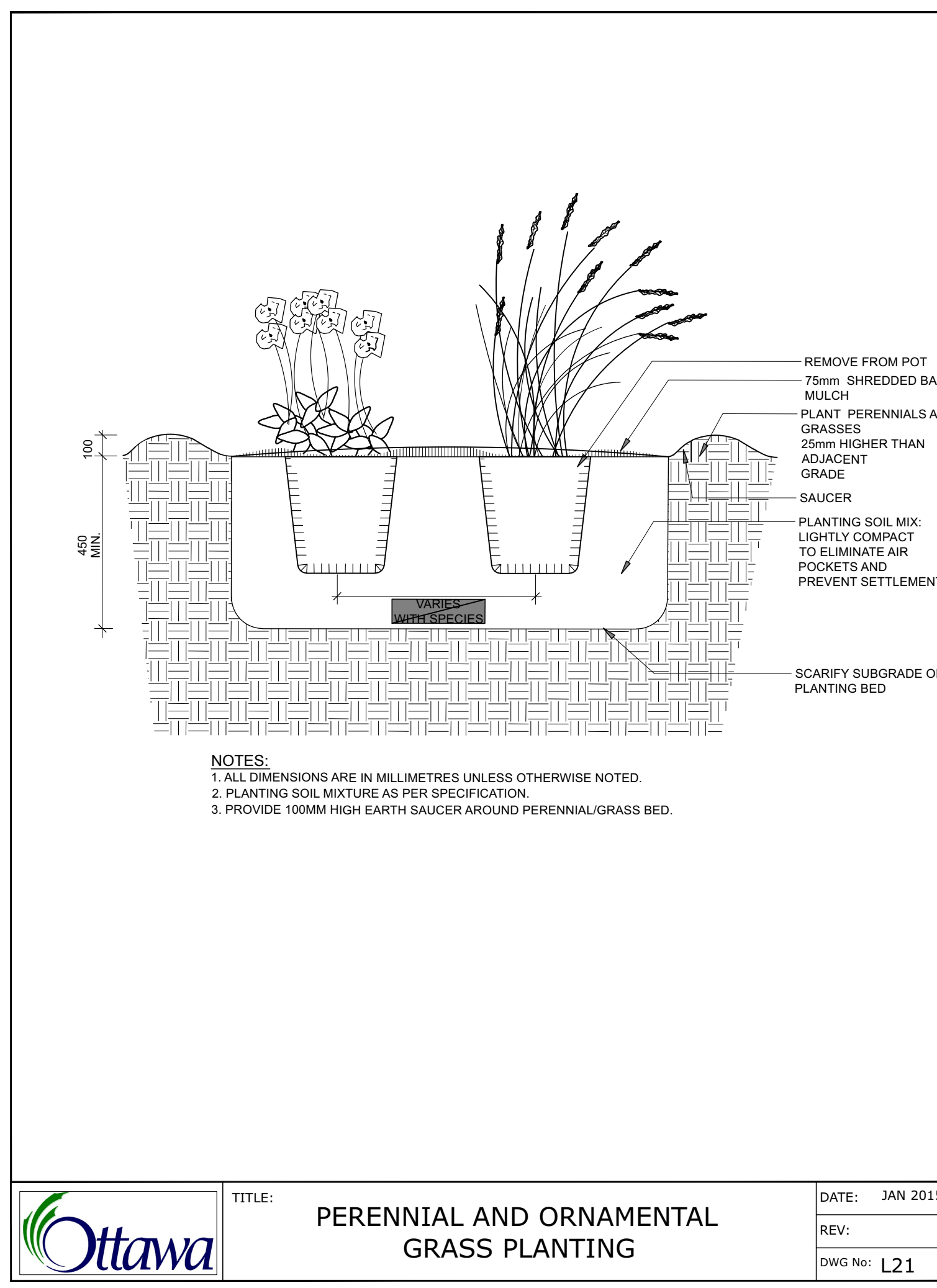
**Ruhland & Associates Ltd**  
 260-1750 Courtwood Crescent, Ottawa, Ontario K2C 1B5  
 P (613) 236-6744 x 200 F (613) 236-1131 info@ruha.ca www.ruha.ca

PROJECT NORTH:	PROFESSIONAL STAMP:
PROFESSIONAL STAMP:	PROFESSIONAL STAMP:
PROJECT:	

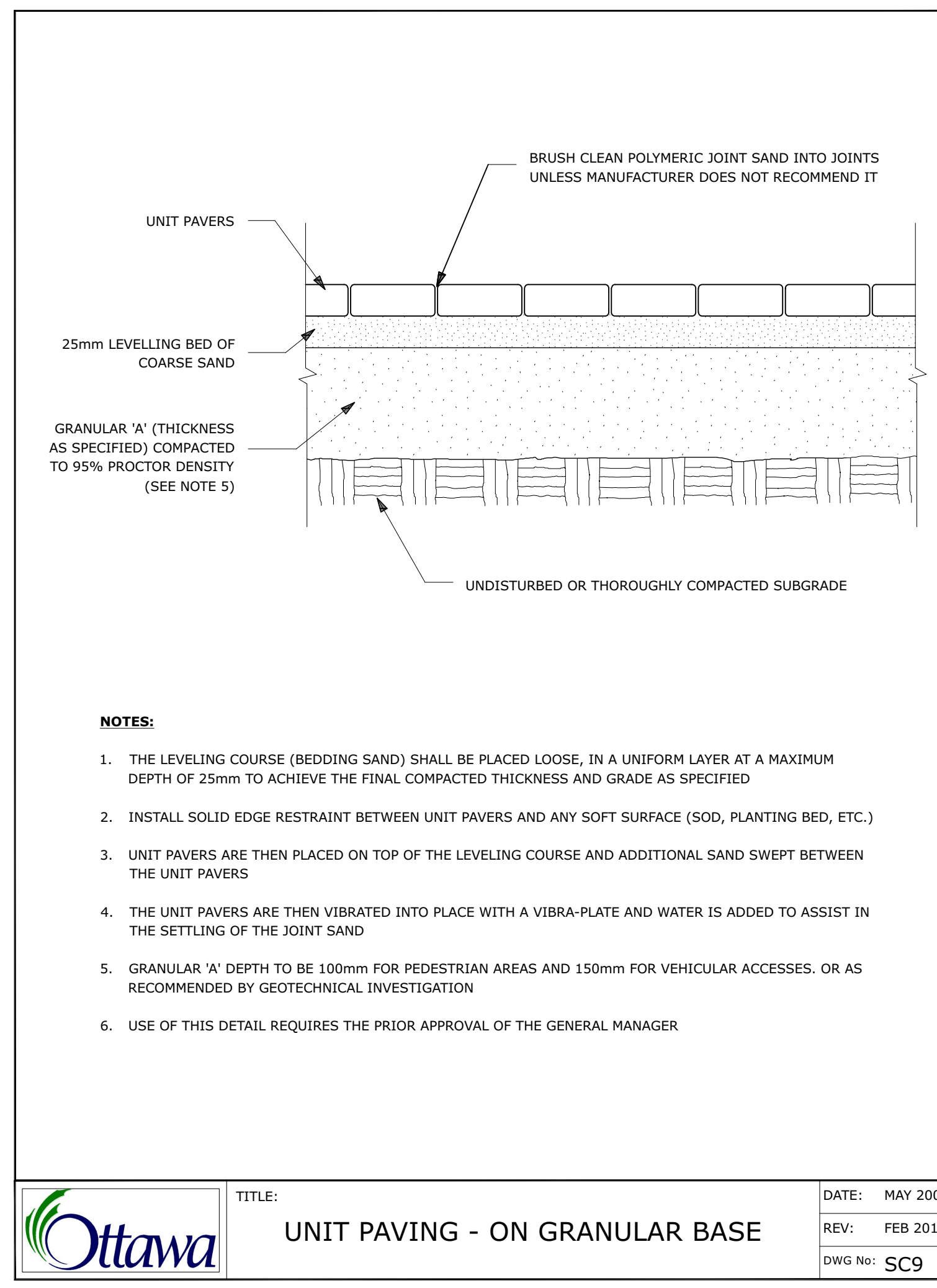
**266 Park Street  
 OTTAWA ON**

**LANDSCAPE DETAILS**

DESIGN:	M.R.	DRAWING NO:	
DRAWN:	M.M.		<b>L-02</b>
CHECKED:	M.R.	G-C NO:	
PLOTTED:			



**Ottawa** TITLE: PERENNIAL AND ORNAMENTAL GRASS PLANTING DATE: JAN 2015  
 REV:  
 DWG No: L21



**Ottawa** TITLE: UNIT PAVING - ON GRANULAR BASE DATE: MAY 2001  
 REV: FEB 2016  
 DWG No: SC9

ADDITIONAL NOTES FOR UNIT PAVING: 150mm DEPTH GRANULAR 'A' TO BE USED ONLY IN PEDESTRIAN WHERE NO OR HAND SNOW REMOVAL IS PLANNED. ALL OTHER PEDESTRIAN AREAS ARE TO RECEIVE 200mm COMPACTED GRANULAR 'A' MINIMUM. FURTHER ADJUSTMENTS TO BE SPECIFIED IN RELATION TO SITE CONDITIONS AND GEOTECHNICAL RECOMMENDATIONS.