

The Contractor shall verify and be responsible for all dimensions. DO NOT locate the drawings - any errors or omissions shall be reported to Stantec without delay.  
The Copyrights to all designs and drawings are the property of Stantec. Reproduction or use for any purpose other than that authorized by Stantec is forbidden.

Legend

- PROPOSED WATERMAIN
- PROPOSED VALVE AND VALVE BOX
- PROPOSED FIRE HYDRANT
- PROPOSED W3 CHAMBER
- PROPOSED REDUCER
- PROPOSED FIRE HYDRANT
- PROPOSED SANITARY SEWER
- PROPOSED STORM SEWER
- PROPOSED CATCHBASIN MANHOLE
- EXISTING WATERMAIN
- EXISTING VALVE AND VALVE BOX
- EXISTING VALVE CHAMBER
- EXISTING REDUCER
- EXISTING FIRE HYDRANT
- EXISTING COMBINED SEWER
- EXISTING STORM SEWER
- EXISTING CATCHBASIN MANHOLE
- EXISTING CATCHBASIN
- PROPOSED DEFERRED CURB LOCATIONS
- PROPOSED BARRIERS CURB
- THERMAL INSULATION ON STORM SEWER WHERE COVER IS LESS THAN 2.0m AND ON SANITARY SEWER WHERE COVER IS LESS THAN 2.5m AS PER S35.
- WATER METER LOCATION AND NUMBER OF METERS
- REMOVE WATER METER LOCATION AND NUMBER OF METERS
- HOSE BIB
- PROPOSED 2HR RATED FIRE WALL LOCATION
- 150mmØ SANITARY SEWER PVC SDR 28 @ 1% MIN
- 3 x 150mmØ PEW WATER SERVICE C/W CURB STOP AND SERVICE POST PER STACK UNLESS OTHERWISE SHOWN
- 200mmØ STORM SEWER PVC SDR 28 @ 1% MIN
- 0.60m BEHIND BACK OF CURB / SIDEWALK AS SHOWN ON PLAN

Notes

- FINAL METER AND REMOVE METER LOCATIONS TO BE CONFIRMED BY MECHANICAL CONSULTANT
- FINAL BUILDING SERVICE SIZES TO BE REVIEWED AND CONFIRMED BY MECHANICAL CONSULTANT.
- THE LOCATION AND ELEVATION OF SEWERS, WATERMAIN AND UTILITIES IS APPROXIMATE ONLY AND THE EXACT LOCATION AND ELEVATIONS SHOULD BE DETERMINED BY CONSULTING THE MUNICIPAL AUTHORITIES AND UTILITY COMPANIES CONCERNED. THE CONTRACTOR SHALL PROVE THE LOCATION AND ELEVATION OF SEWERS, WATERMANS AND UTILITIES AND SHALL BE RESPONSIBLE FOR THEIR PROTECTION AND THE IMPLEMENTATION OF ANY NECESSARY PROCEDURES CALLED FOR IN THE APPROPRIATE STANDARD AND REGULATIONS. ANY DISCREPANCY WITH THE INFORMATION SHOWN ON THESE PLANS SHALL BE REPORTED TO THE ENGINEER PRIOR TO CONTINUING WITH CONSTRUCTION.
- EXISTING SEWER INFORMATION PROVIDED FROM ENGINEERING DESIGN DRAWINGS PREPARED BY IBI. PLAN AND PROFILE DRAWINGS 100, 101, AND 102 REVISION 6, PROJECT NO. 125681

Revision	Issued For	By	App'd.	Date
0	ISSUED FOR SPA	MJS	DT	24.11.11
1				

File Name: 160402058 D8.dwg

Permit Seal	Dwn.	Chkd.	Dgn.	Date
	MJS	DT	MJS	24.10.14
				YY.MM.DD

Client/Project

RICH CRAFT HOMES

RIVERSIDE SOUTH BLOCK 167  
955 BORBRIDGE AVENUE  
OTTAWA, ON

Title

SITE SERVICING PLAN

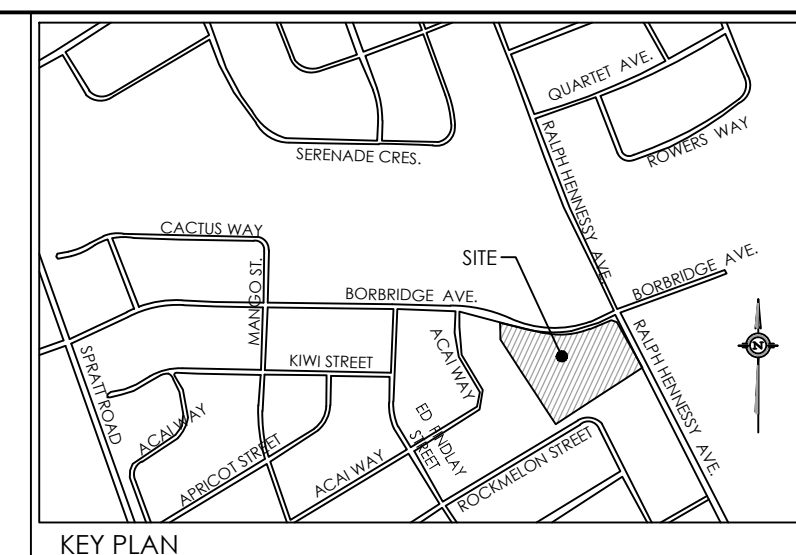
Project No. 160402058

Scale 1:400

Drawing No. Sheet Revision

SSP-1 3 of 7 0

PLAN # 00000



**200mmØ WATERMAIN TABLE A**

STATION	FINISHED GRADE	TOP W/M	ITEM
0+000	97.47	95.274	200mmØ TEE CONNECTION TO EX.300mmØ PVC WATERMAIN
0+008.9	97.70	95.300	200mmØ VALVE AND VALVE BOX
0+013.1	97.75	95.350	11"Ø HORIZONTAL BEND
0+015.1	97.77	95.370	150mmØ FIRE HYDRANT TEE
0+019.1	97.77	95.370	22"Ø HORIZONTAL BEND
0+023.1	97.72	95.320	200mmØ x 200mmØ TEE
0+044.2	97.40	95.200	11"Ø HORIZONTAL BEND
0+048	97.57	95.190	200mmØ x 200mmØ TEE
0+054	97.58	95.180	200mmØ VALVE AND VALVE BOX
0+078	97.45	95.050	200mmØ x 200mmØ TEE
0+080.7	97.43	95.030	150mmØ FIRE HYDRANT TEE
0+093.4	97.34	94.940	22.5" HORIZONTAL BEND
0+101.6	97.28	94.880	22.5" HORIZONTAL BEND
0+108.9	97.29	94.890	45" HORIZONTAL BEND
0+120	97.38	94.960	TOP OF PIPE
0+140	97.55	95.150	TOP OF PIPE
0+148.1	97.45	95.050	150mmØ FIRE HYDRANT TEE
0+150.7	97.41	95.010	200mmØ VALVE AND VALVE BOX
0+153.7	97.38	94.980	200mmØ x 200mmØ TEE
0+160	97.36	94.960	TOP OF PIPE
0+180	97.55	95.150	TOP OF PIPE
0+189.6	97.51	95.110	200mmØ VALVE AND VALVE BOX
0+196.5	97.48	95.080	5" HORIZONTAL BEND
0+202.5	97.51	95.114	200mmØ TEE CONNECTION TO EX.300mmØ PVC WATERMAIN

**200mmØ / 150mmØ WATERMAIN TABLE B**

STATION	FINISHED GRADE	TOP W/M	ITEM
1+000	97.59	95.190	200mmØ x 200mmØ TEE
1+002	97.57	95.170	200mmØ VALVE AND VALVE BOX
1+003.6	97.54	95.140	22"Ø HORIZONTAL BEND
1+020	97.35	94.950	TOP OF PIPE
1+036.7	97.53	95.130	11"Ø HORIZONTAL BEND
1+051.4	97.56	95.160	150mmØ FIRE HYDRANT TEE
1+054.9	97.50	95.100	200mmØ x 200mmØ TEE
1+059.9	97.45	95.050	200mmØ x 150mmØ REDUCER
1+063.7	97.43	95.030	150mmØ VALVE AND VALVE BOX
1+080.2	97.50	95.100	150mmØ CAP AND THRUST BLOCK

**200mmØ WATERMAIN TABLE C**

STATION	FINISHED GRADE	TOP W/M	ITEM
2+000	97.50	95.100	200mmØ x 200mmØ TEE
2+003	97.48	95.080	11"Ø HORIZONTAL BEND
2+009	97.38	94.980	200mmØ VALVE AND VALVE BOX
2+020	97.27	94.870	TOP OF PIPE
2+038	97.35	94.950	200mmØ VALVE AND VALVE BOX
2+041	97.38	94.980	200mmØ x 200mmØ TEE

**200mmØ WATERMAIN TABLE D**

STATION	FINISHED GRADE	TOP W/M	ITEM
3+000	97.62	95.220	200mmØ CAP AND THRUST BLOCK
3+001	97.61	95.210	150mmØ FIRE HYDRANT TEE
3+017	97.40	95.200	200mmØ x 200mmØ TEE
3+035.2	97.78	95.380	11"Ø HORIZONTAL BEND
3+039.7	97.76	95.360	200mmØ VALVE AND VALVE BOX
3+048.7	97.72	95.320	200mmØ x 200mmØ TEE

**200mmØ WATERMAIN TABLE E**

STATION	FINISHED GRADE	TOP W/M	ITEM
4+000	97.53	95.130	200mmØ CAP AND THRUST BLOCK
4+009	97.50	95.050	TOP OF PIPE
4+034.4	97.53	95.130	45" HORIZONTAL BEND
4+041.4	97.57	95.170	200mmØ VALVE AND VALVE BOX
4+043.1	97.40	95.200	200mmØ x 200mmØ TEE

**200mmØ WATERMAIN TABLE F**

STATION	FINISHED GRADE	TOP W/M	ITEM
5+000	97.52	95.120	200mmØ CAP AND THRUST BLOCK
5+002	97.43	95.030	TOP OF PIPE
5+033.3	97.59	95.190	200mmØ VALVE AND VALVE BOX
5+043.8	97.44	95.040	200mmØ x 200mmØ TEE

**ICD TABLE**

CATCHBASIN ID	TRIBUTARY AREA ID	ICD TYPE	2YR HEAD (m)	10YR HEAD (m)	2YR FLOW (L/s)	10YR FLOW (L/s)
CB 103A	L103A	130 mm ORIFICE	1.38	1.66	42.1	46.2
CB 103B	L103B	83 mm ORIFICE	1.38	1.68	16.1	17.8
CB 104A	L104A	102 mm ORIFICE	1.38	1.63	24.3	25.3
CB 106A	L106A	135 mm ORIFICE	1.38	1.68	45.4	50.1
CB 107A	L107A	108 mm ORIFICE	1.38	1.68	27.3	30.1
CB 108A	L108A	102 mm ORIFICE	1.38	1.68	24.3	26.8

**SEWER AND WATER CROSSING TABLE**

CROSSING	STM INV	STM OBV	SAN INV	SAN OBV	WTR TOP	WTR BTM	COMMENTS
▲	93.61(93.53)	94.06(94.14)	91.72	92.02			STORM CROSSING SANITARY
▲	93.63(93.55)	94.08(94.16)	93.39	93.59	95.34L	95.04L	STORM AND SANITARY CROSSING WATERMAIN
▲	93.73(93.65)	94.18(94.26)	94.71	94.91			STORM CROSSING SANITARY
▲	93.79(93.71)	94.24(94.32)	93.52	93.72	95.34	95.14	STORM AND SANITARY CROSSING WATERMAIN
▲	94.04	94.34	93.40	93.80			STORM CROSSING SANITARY
▲	94.07	94.37	993.67	93.87	95.20	95.00	STORM AND SANITARY CROSSING WATERMAIN
▲	94.43	94.81	93.83	94.03	95.51	95.31	STORM AND SANITARY CROSSING WATERMAIN
▲	94.44	94.82	93.91	94.11			STORM CROSSING SANITARY
▲	94.52	94.82	94.05	94.25			STORM CROSSING SANITARY
▲	94.53	94.83	94.01	94.21	95.53	95.33	STORM AND SANITARY CROSSING WATERMAIN
▲	94.27	94.52	94.88	95.08	95.78	95.58	STORM AND SANITARY CROSSING WATERMAIN

\*BRACKETS DENOTE ADJUSTED VALUE WITH CONCRETE PIPE THICKNESS

2024/11/13 10:38 AM design drawing 160402058 D8.dwg  
 ORIGINAL SHEET - ARCH D