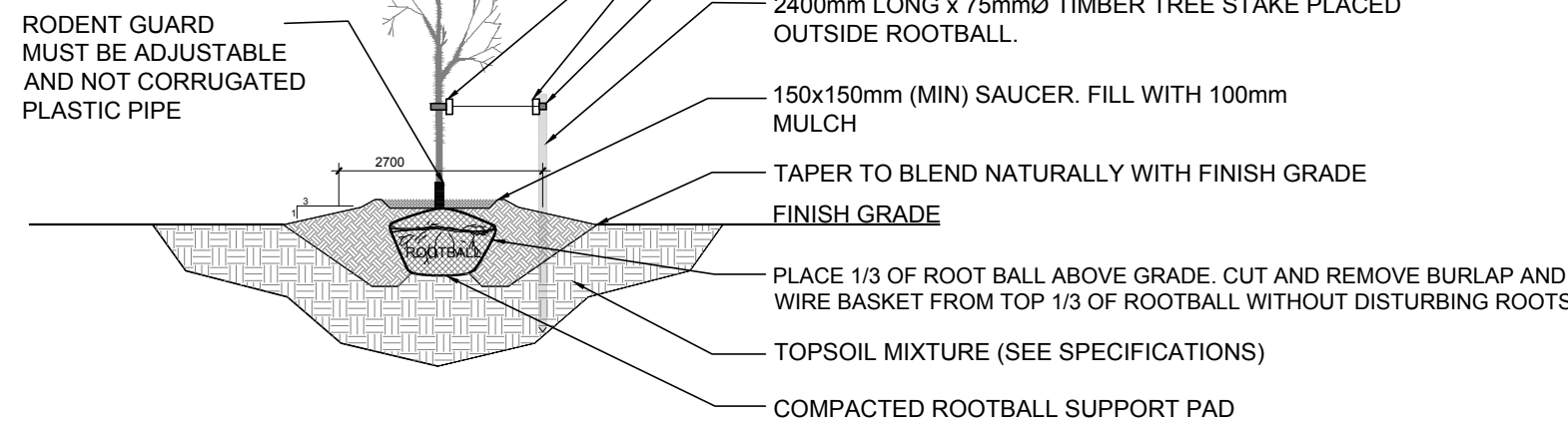


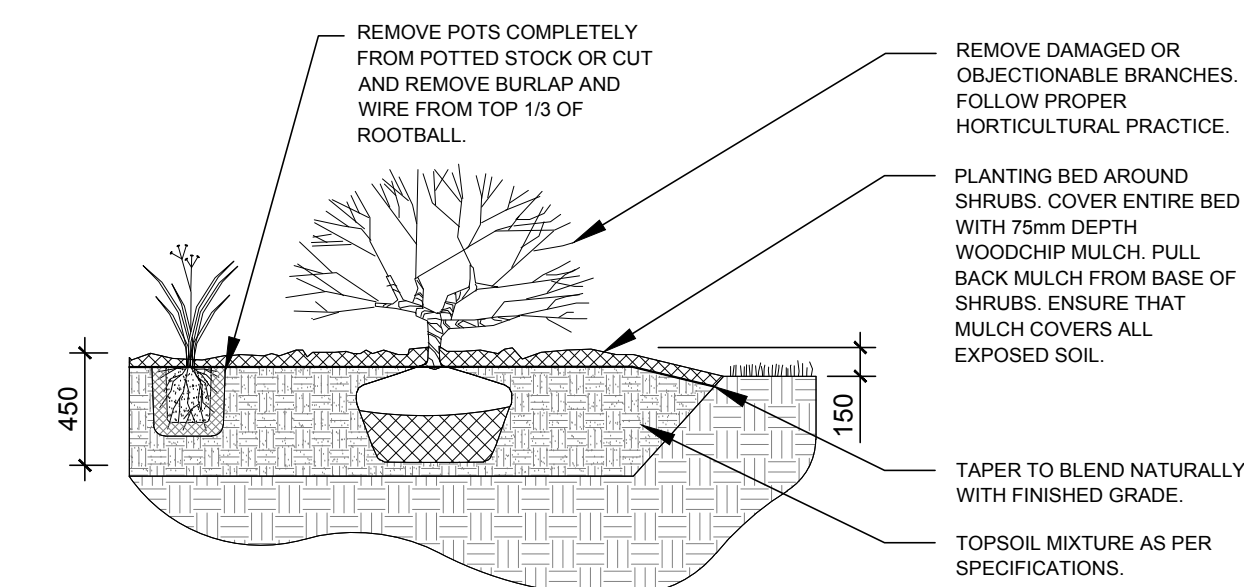
1 LANDSCAPE PLAN
SCALE: 1:200

NOTE:

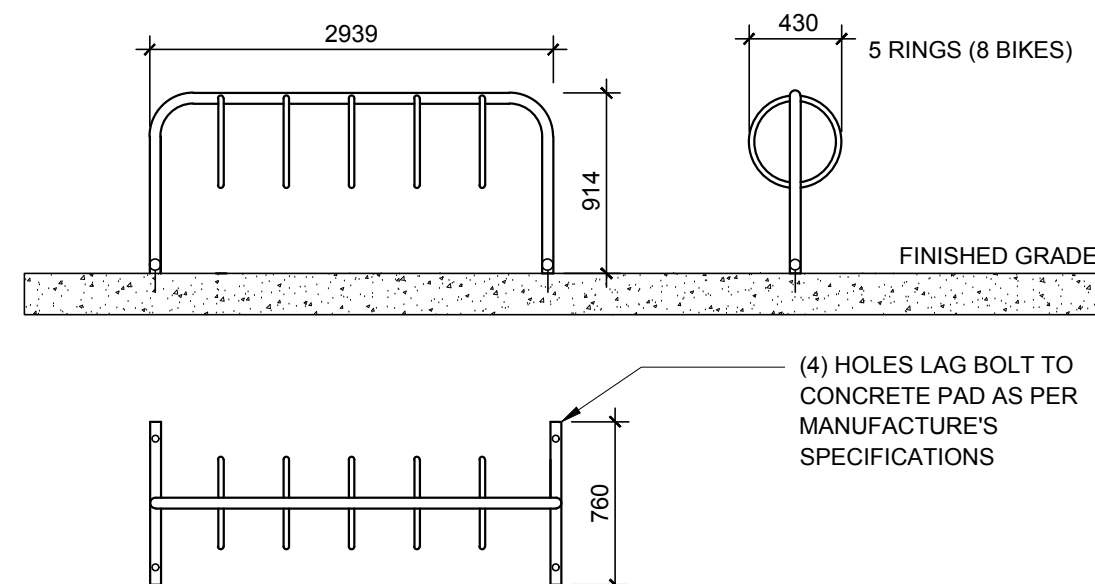
ALL TREE STAKES AND RODENT GUARDS ARE TO BE REMOVED BY THE CONTRACTOR AT THE END OF THE WARRANTY PERIOD



2 DECIDUOUS TREE PLANTING
SCALE: NTS



3 SHRUB / ORNAMENTAL GRASS / PERENNIAL PLANTING
SCALE: NTS

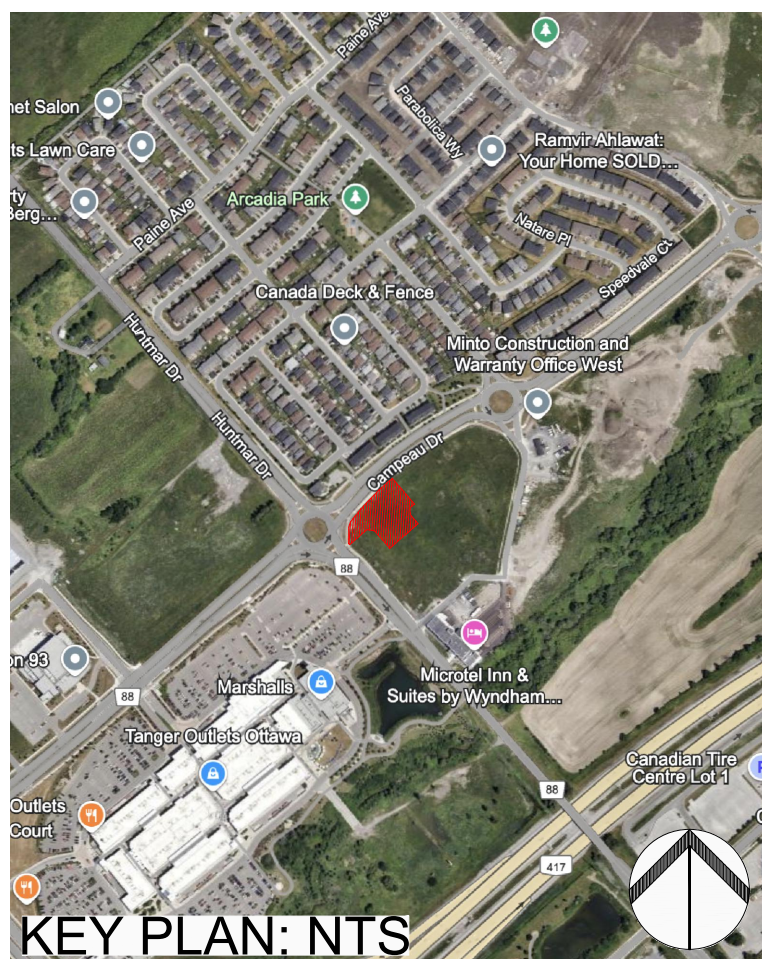


4 MAZEWELD 5 RING BIKE RACK
SCALE: NTS

PROPOSED PLANT LIST						
KEY	QTY	BOTANICAL NAME	COMMON NAME	SIZE	CONDITION	SPACING/REMARKS
DECIDUOUS TREES						
GB	3	Ginkgo biloba	Maidenhair Tree	50mm CAL.	B&B	MALE
HB*	2	Celtis occidentalis	Common Hackberry	50mm CAL.	B&B	
HL	4	Gleditsia triacanthos	Honey Locust	50mm CAL.	B&B	
RO*	1	Quercus rubra	Red Oak	50mm CAL.	B&B	
SB*	9	Amelanchier canadensis	Serviceberry	50mm CAL.	B&B	
SM*	1	Acer saccharum	Sugar Maple	50mm CAL.	B&B	
WB*	1	Betula papyrifera	Multi-stem Paper Birch	50mm CAL.	B&B	3 trunks min.
SHRUBS						
Ah	12	Hydrangea arborescens 'Annabelle'	Annabelle Hydrangea	2 gal. POT	Potted	2000mm O.C.
Cj*	14	Juniperus horizontalis	Creeping Juniper	2 gal. POT	Potted	1500mm O.C.
Fg	26	Rhus aromatica 'Gro-Low'	Low Gro Fragrant Sumac	2 gal. POT	Potted	1500mm O.C.
Mp	2	Pinus mugo var. Pumilo	Dwarf Mugo Pine	2 gal. POT	Potted	2000mm O.C.
Rr	17	Rosa rugosa	Rugosa Rose	2 gal. POT	Potted	1500mm O.C.
Ss	36	Sorbaria sorbifolia 'Sem'	Sem False Spirea	2 gal. POT	Potted	1500mm O.C.
GRASSES						
kf	27	Calamagrostis acutiflora 'Karl Foerster'	Karl Foerster Grass	2 gal. POT	Potted	800mm O.C.
ms*	26	Panicum virgatum	Switch Grass	1 gal. POT	Potted	500mm O.C.
PLANT NOTES:						
1. * DENOTES NATIVE SPECIES						
2. ALL TREES ARE TO BE PLANTED ON PRIVATE PROPERTY						

GENERAL NOTES:

- IT IS THE RESPONSIBILITY OF THE APPROPRIATE CONTRACTOR OR OFFICIAL TO REPORT ANY ERRORS, OMISSIONS OR DISCREPANCIES ON THIS PLAN WITH ACTUAL SITE CONDITIONS TO THE LANDSCAPE ARCHITECT BEFORE PROCEEDING WITH CONSTRUCTION.
- THE CONTRACTOR IS TO NOTIFY ALL UTILITY COMPANIES AND AUTHORITIES PRIOR TO ANY EXCAVATION AND ASCERTAIN LOCATIONS OF UNDERGROUND SERVICES.
- THE CONTRACTOR IS TO REINSTATE ALL AREAS AND ITEMS DAMAGED AS A RESULT OF CONSTRUCTION ACTIVITY.
- THE CONTRACTOR IS TO COMPLY WITH ALL PERTINENT CODES AND BY-LAWS.
- THE CONTRACTOR IS TO MAINTAIN A POSITIVE SURFACE RUN-OFF THROUGHOUT THE ENTIRE CONSTRUCTION PERIOD.
- THE LANDSCAPE ARCHITECT IS NOT RESPONSIBLE FOR SUBSURFACE CONDITIONS.
- THE CONTRACTOR IS TO IDENTIFY ALL EXISTING TREES TO REMAIN ON SITE WITH THE LANDSCAPE ARCHITECT PRIOR TO CONSTRUCTION.
- THE CONTRACTOR IS TO STAKE THE PROPOSED LOCATION OF ALL PLANT MATERIAL IN CONJUNCTION WITH THE LANDSCAPE ARCHITECT PRIOR TO EXCAVATION.
- MINIMUM DISTANCES FOR SELECTED DECIDUOUS TREES ARE AS FOLLOWS:
 - BUILDING FOUNDATIONS - 7.5M
 - SIDEWALKS - 1.5M
 - PUBLIC STREETS - 2.5M
 - UNDERGROUND INFRASTRUCTURE - 2.0M
- ALL TREES WITHIN 1M OF UNDERGROUND UTILITY TRENCHES ARE TO BE EXCAVATED BY HAND.
- REMOVE ALL PROTECTIVE WRAPPING FROM TREE TRUNKS AFTER INSTALLATION.
- STAKING OF TREES SHALL ONLY BE PERFORMED IF NECESSARY.
- ENSURE THAT MULCH IS PULLED BACK A MINIMUM DISTANCE OF 75MM FROM BASE OF TREE TRUNK.
- TREE SOIL VOLUMES ARE TO BE AS FOLLOWS:
 - 30m3 FOR A LARGE DECIDUOUS TREE
 - 25m3 FOR EVERGREEN AND MEDIUM DECIDUOUS TREES
 - 20m3 FOR SMALL DECIDUOUS TREES.



KEY PLAN: NTS

40 YEAR CANOPY CALCULATION:

-6971 m2 site area
- 12 medium trees proposed (79m2 ea) and 10 small trees proposed (7m2 ea)
=1018m2 canopy cover = 14.6% canopy cover
*Large deciduous tree calculated at 14m spread, medium deciduous trees at 10m spread, small deciduous trees at 3m spread, large coniferous trees at 10m spread

CLIENT

MINTO COMMUNITIES
200 180 KENT STREET, OTTAWA, ON, K1P 0B6
T: 613 - 404 - 4235

CONSULTANTS
ARCHITECTS

DCA
A GROUP OF ARCHITECTS

CIVIL
ENGINEERS

ARCADIS

LEGEND

- PROPOSED DECIDUOUS TREE
- 20, 25, or 30m3 SOIL VOLUME (SEE GENERAL NOTES)
- PROPOSED SHRUBS AND GRASSES
- PROPOSED WOOD CHIP MULCH
- PROPOSED SOD
- GRASS ON CITY PROPERTY
- PROPOSED CONCRETE WALKWAY
- PROPOSED PEASTONE
- PROPOSED ACCESSIBLE BENCH
- PROPOSED 5 RING BIKE RACK
- PROPERTY LINE

3	ISSUED FOR SITE PLAN APPROVAL	11/08/2024	CM	JL
2	ISSUED FOR DISCUSSION AND REVIEW	08/30/2024	CM	JL
1	ISSUED FOR DISCUSSION AND REVIEW	06/26/2024	CM	JL
No.	Issue	Date	mm/dd/yyyy	DR CK

JAMES B. LENNOX & ASSOCIATES INC.
LANDSCAPE ARCHITECTS
3332 CARLING AVE. OTTAWA, ONTARIO K2H 5A8
Tel. (613) 722-5168 Fax. (866) 343-3942

PROJECT

MINTO DESIGN CENTER

8555 CAMPEAU DR, KANATA

DRAWING

LANDSCAPE PLAN

STAMP

ASSOCIATION OF LANDSCAPE ARCHITECTS
MEMBER
JAMES B. LENNOX

SCALE

AS SHOWN

START DATE

JUNE, 2024

PROJECT NO.

24MIS2436

PROJECT NORTH

DRAWING NO.

L.1

PLOT SIZE ARCH-D