

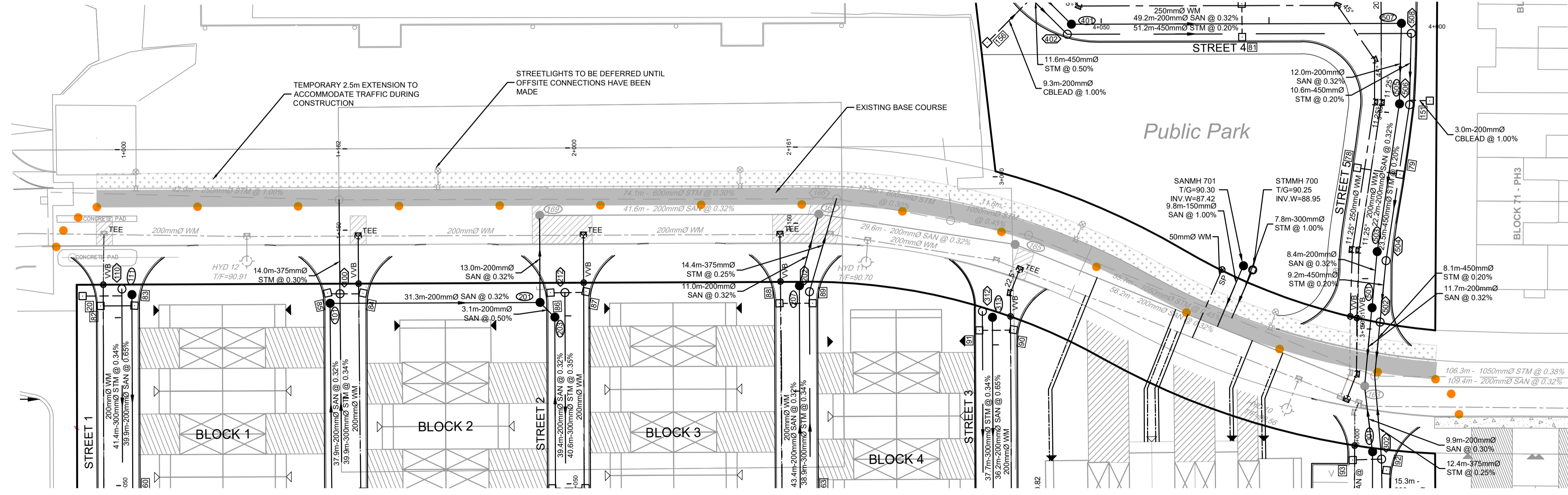
- LEGEND**
- 200mm \varnothing WM PROPOSED WATERMAIN
 - PROPOSED VALVE LOCATION
 - V&VB VALVE & VALVE BOX
 - V&VC VALVE & VALVE CHAMBER
 - HYD \varnothing PROPOSED HYDRANT CW VALVE & LEAD
 - T/F=98.45 PROPOSED TOP OF BOTTOM FLANGE
 - BEND PROPOSED BEND AND THRUSTBLOCK 11.25°, 22.5°, 45° or TEE (SEE PLAN AND PROFILES)
 - PROPOSED SANITARY MH & SEWER
 - PROPOSED STORM MH & SEWER
 - PROPOSED LANDSCAPE TEE CATCHBASIN & PERFORATED SUBDRAIN
 - PROPOSED LANDSCAPE ELBOW CATCHBASIN & PERFORATED SUBDRAIN
 - PROPOSED REAR YARD CATCHBASIN MANHOLE & LEAD
 - PROPOSED REAR YARD CATCHBASIN & LEAD
 - FENCE - PRIVACY
 - FENCE - CHAINLINK
 - FENCE - POST AND RAIL
 - SERVICE CONNECTION STUB
 - 100mm STORM @ 1.0%
 - 19mm WATER
 - 125mm SANITARY @ 1.0%
 - SERVICE CONNECTION STUB- COMMON TRENCH
 - 100mm STORM @ 1.0%
 - 19mm WATER
 - 125mm SANITARY @ 1.0%
 - PROPOSED ROAD CATCHBASIN
 - DIRECTION OF FLOW
 - ROADCUT PER CITY OF OTTAWA R10
 - EXISTING BASE COURSE
 - TEMPORARY EXTENSION OF BASE COURSE
 - TRAFFIC CONES

PRELIMINARY CONSTRUCTION MANAGEMENT CHECKLIST

WILL CONSTRUCTION REQUIRE THE DETOUR OF A BUS ROUTE?	NO
WILL THIS WORK BLOCK A BIKE LANE?	NO
WILL THIS WORK BLOCK A SIDEWALK?	NO
WILL THIS WORK REQUIRE A TRAFFIC LANE TO BE CLOSED?	YES

- CMP NOTES:**
- TRAFFIC CONTROL PLAN WILL BE PREPARED FOR THIS SITE PRIOR TO COMMENCEMENT OF CONSTRUCTION AND ALL NECESSARY ENCROACHMENTS WILL BE COORDINATED WITH THE CITY OF OTTAWA.

OPTION 1: TEMPORARY VEHICULAR TRAFFIC THROUGH LAMARCHE AVANEUE
1:1000

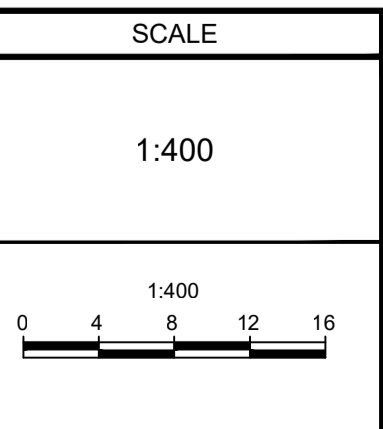


OPTION 2: TEMPORARY TRAFFIC DIVERSION ON VENTUS WAY

NOTE:
THE POSITION OF ALL POLE LINES, CONDUITS, WATERMANS, SEWERS AND OTHER UNDERGROUND AND OVERGROUND UTILITIES AND STRUCTURES IS NOT NECESSARILY SHOWN ON THE CONTRACT DRAWINGS, AND WHERE SHOWN, THE ACCURACY OF THE POSITION OF SUCH UTILITIES AND STRUCTURES IS NOT GUARANTEED. BEFORE STARTING WORK, DETERMINE THE EXACT LOCATION OF ALL SUCH UTILITIES AND STRUCTURES AND ASSUME ALL LIABILITY FOR DAMAGE TO THEM.

PRELIMINARY

No.	REVISION	DATE	BY
1.	ISSUED FOR CITY REVIEW	NOV 1/24	MS



FOR REVIEW ONLY

DESIGN	CV/MS
CHECKED	MS
DRAWN	CV
CHECKED	MS
APPROVED	BHB

NOVATECH
Engineers, Planners & Landscape Architects
Suite 200, 240 Michael Cowpland Drive
Ottawa, Ontario, Canada K2M 1P6
Telephone (613) 254-9643
Facsimile (613) 254-5857
Website www.novatech-eng.com

LOCATION
CITY OF OTTAWA
THE COMMONS - PHASE 4

DRAWING NAME
CONSTRUCTION MANAGEMENT PLAN

PROJECT No. 118224-MD
REV REV # 1
DRAWING No. 18224-CMP-MD

M:\2018\118224\CAD\Design\Medium Density\118224-CMP-MD.dwg, 118224-CMP-MD.dwg, Oct 31, 2024, 4:27pm, brend