

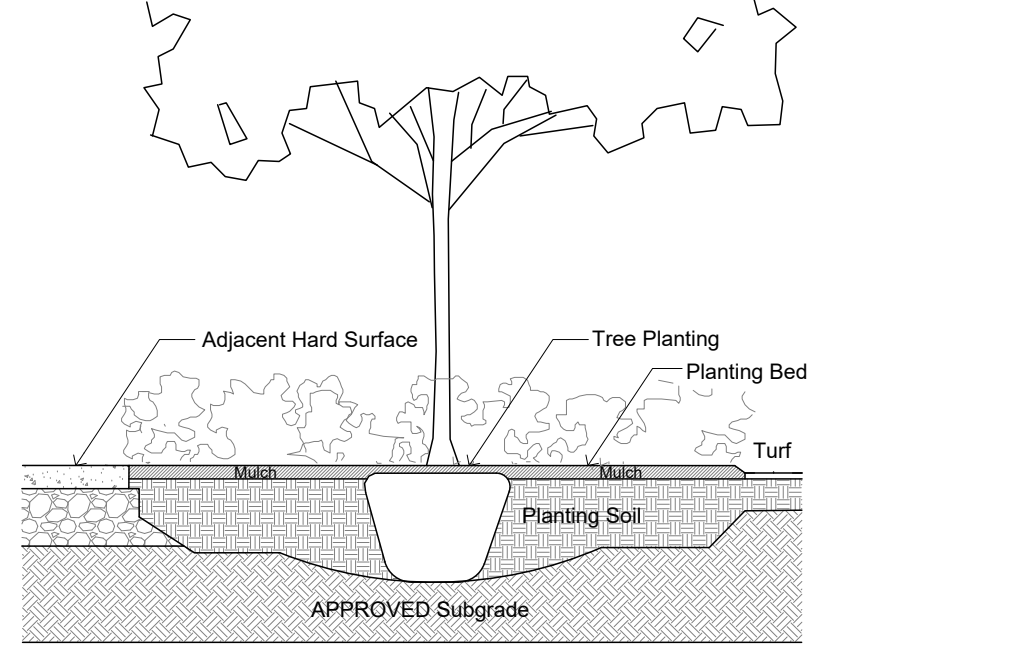
TREE SCHEDULE 2140 BASELINE ROAD MULTI UNIT RESIDENTIAL									
CODE	QUANTITY	BOTANICAL NAME	COMMON NAME	B&B SPECIMEN	NATIVE TO CANADA	FORECASTED SPREAD as per City Ottawa Forestry		Canopy Cover Contribution/Tree in Square Metres	
	PRIVATE	PUBLIC				DIAMETER	RADIUS		
AC	0	3	Amelanchier canadensis	Tree Serviceberry	50mm cal	YES	3.0 m	1.5m	7.0 sq. m.
AR	1	0	Acer rubrum	Red Maple	60mm cal	YES	10.0 m	5.0m	78.5 sq. m.
AS	1	0	Acer saccharum	Sugar Maple	60mm cal	YES	14.0 m	7.0m	154.0 sq. m.
CO	0	1	Celtis occidentalis	Common Hackberry	50mm cal	YES	14.0 m	7.0m	154.0 sq. m.
GB	2	0	Ginkgo biloba Princeton Sentry	Princeton Sentry Ginkgo	60mm cal	YES	10.0 m	5.0m	78.5 sq. m.
QM	0	1	Quercus macrocarpa	Bur Oak	50mm cal	YES	14.0 m	7.0m	154.0 sq. m.
SR	0	3	Syringa reticulata	Japanese Tree Lilac	50mm cal	YES	3.0 m	1.5m	7.0 sq. m.
VL	0	3	Viburnum lentago	Nannyberry	50mm cal	YES	3.0 m	1.5m	7.0 sq. m.
TOTALS	4	11							
AB	1	0	Abies balsamea	Balsam Fir	1.5m Ht.	YES	5.0m	2.5m	20.0 sq. m.
PG	1	0	Picea glauca	White Spruce	1.5m Ht.	YES	5.0m	2.5m	20.0 sq. m.
PS	1	0	Pinus strobus	White Pine	1.5m Ht.	YES	10.0m	5.0m	78.5 sq. m.

TREE CANOPY CALCULATION AS PER EVOLVING CITY OF OTTAWA REQUIREMENTS:

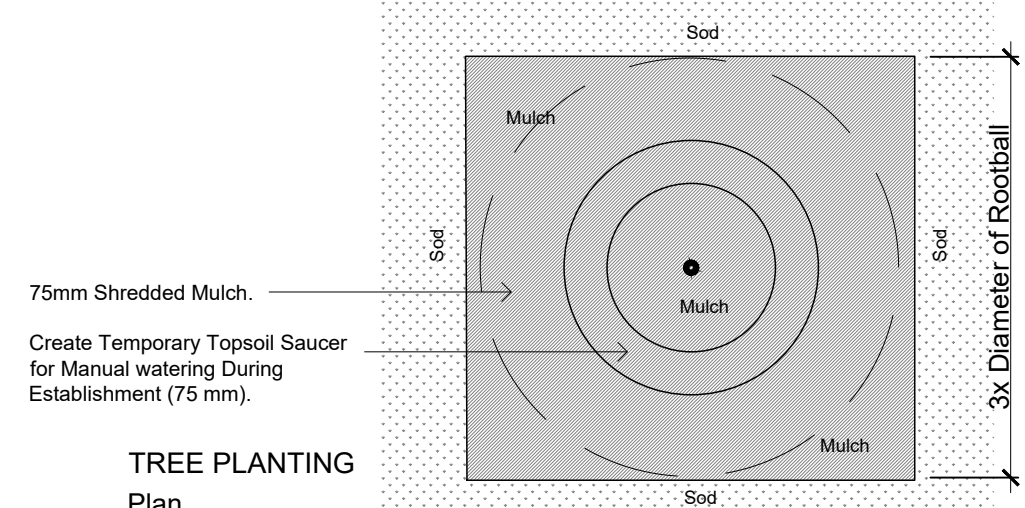
TOTAL SITE AREA: **3 180 SQ. M.**

CALCULATIONS FOR TREE CANOPY
Proposed Trees (Areas of Polygons Hatched in Green, Excluding Overlap.)
TOTAL CANOPY COVER 750 + 42 = **792 SQ. M.**

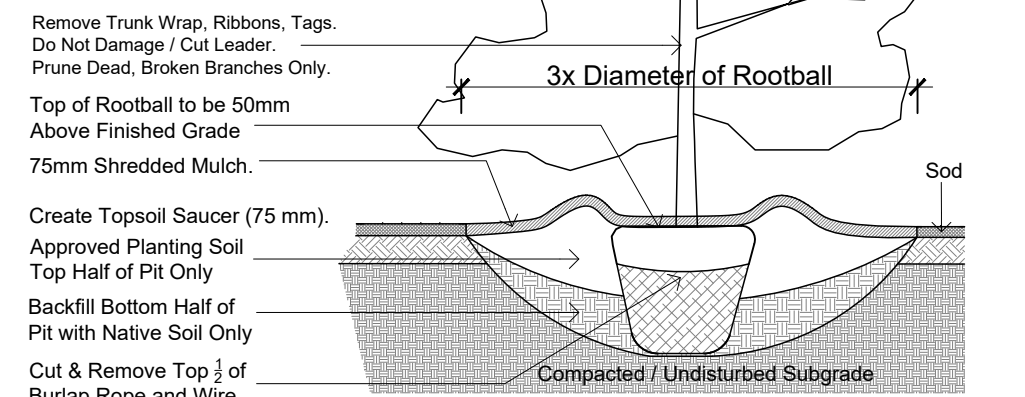
CANOPY COVER AS % OF SITE 792/3180 = **25 %**



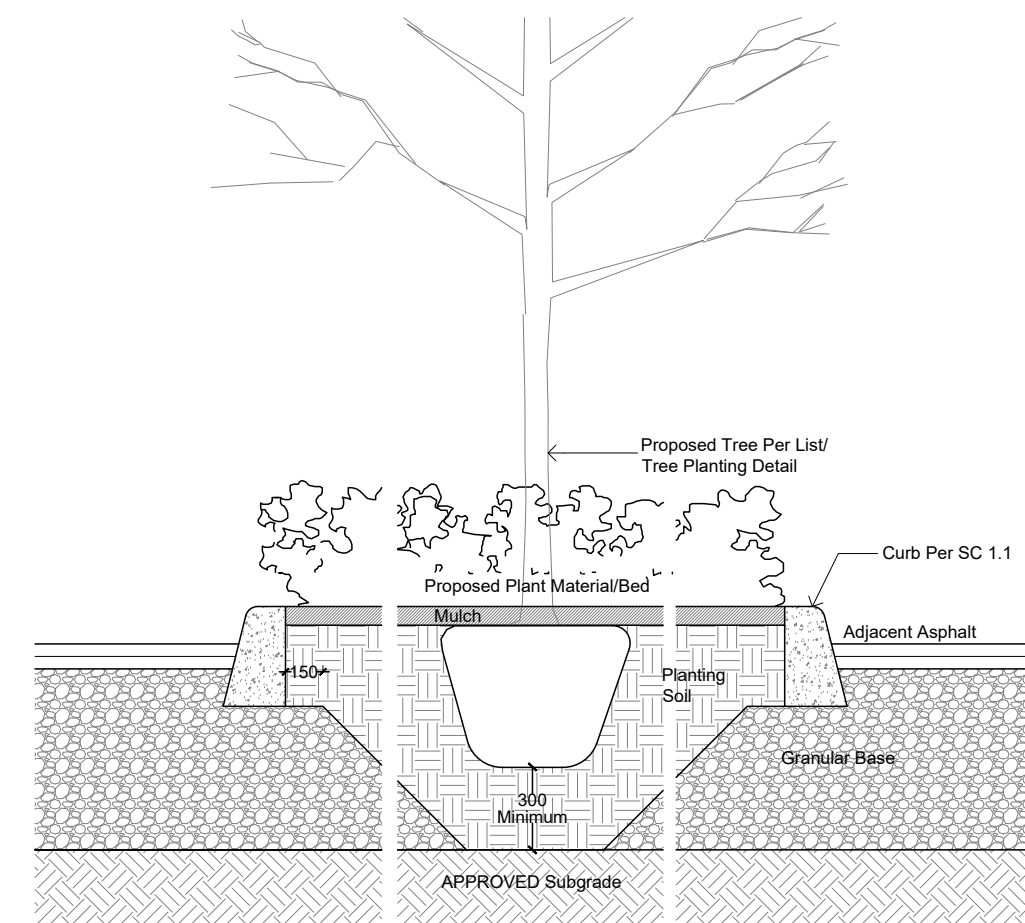
TREE PLANTING IN PLANTING BED NTS



TREE PLANTING Plan



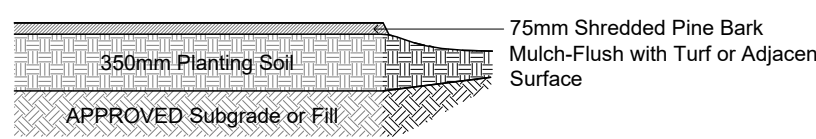
TREE PLANTING Section



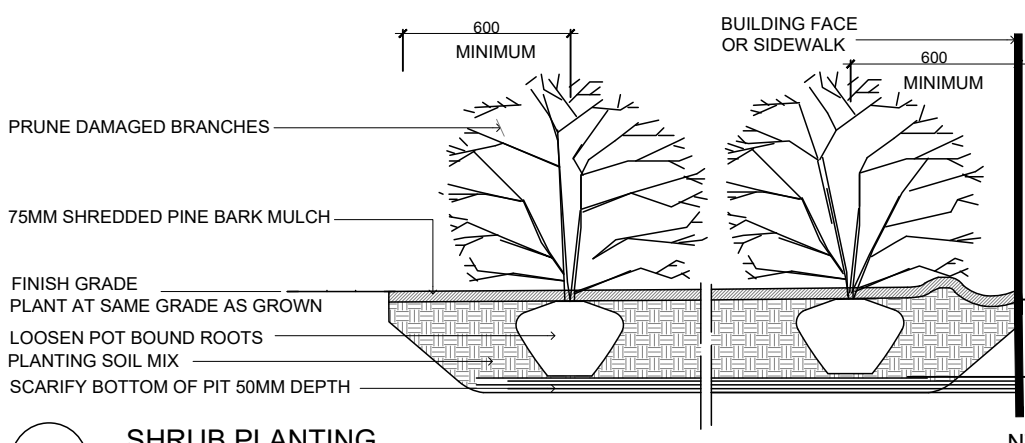
TYPICAL PLANTING IN ISLAND SECTION NTS

Plant List - Shrubs - Apartment Building 2140 Baseline Road				
Code	Qty.	Botanical Name	Common Name	Condition
HK	365	Hypericum kalmianum	St. John's Wort	Pot
SA	215	Spiraea alba	Meadowsweet	Pot

During Excavation/Bed Preparation if Extreme Conditions are Encountered (Water, Rock, Gravel...) Notify GJA INC Immediately.



TYPICAL PLANTING BED NTS

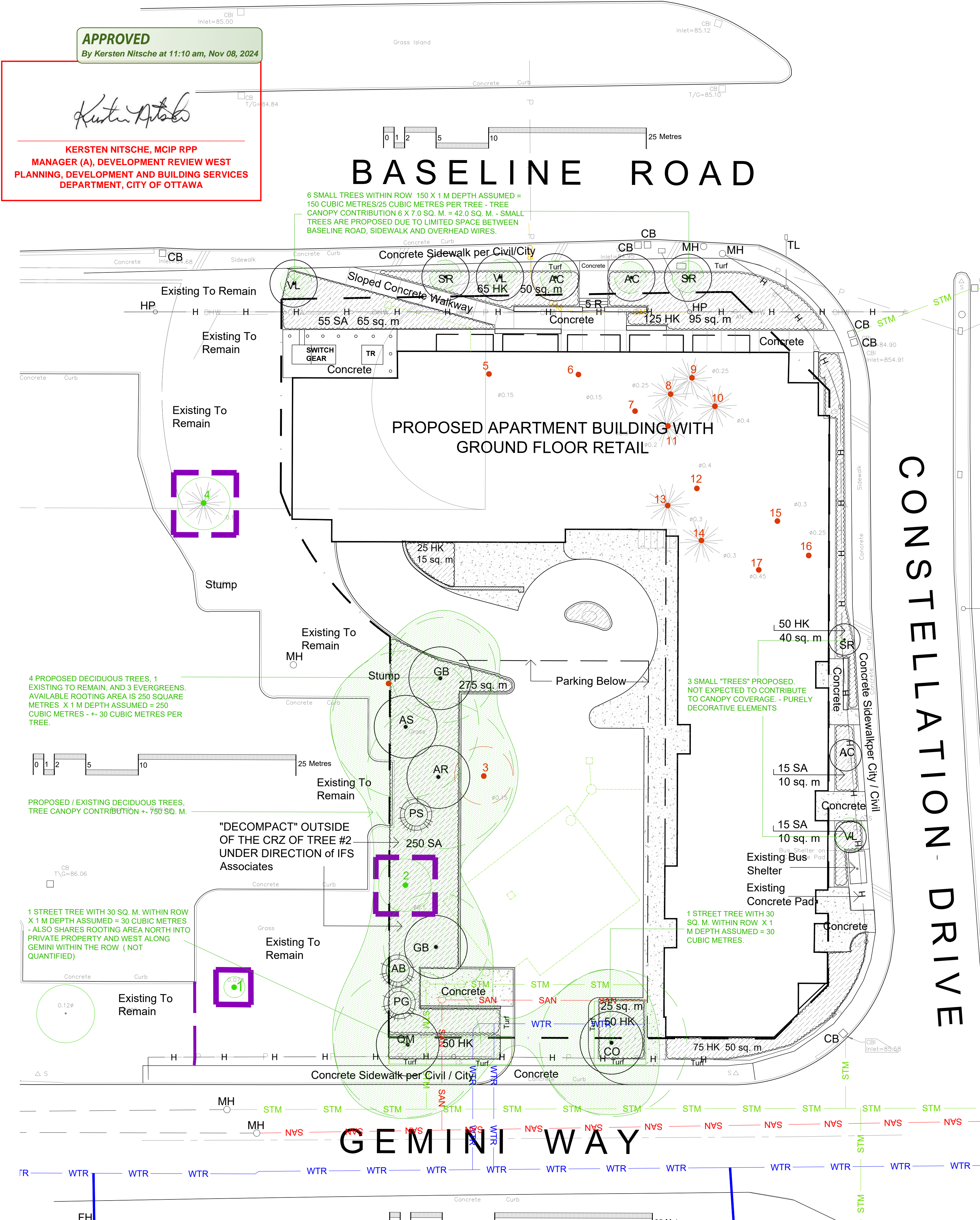


SHRUB PLANTING NTS

APPROVED
By Kersten Nitsche at 11:10 am, Nov 08, 2024

Kersten Nitsche

**KERSTEN NITSCHKE, MCIP RPP
MANAGER (A), DEVELOPMENT REVIEW WEST
PLANNING, DEVELOPMENT AND BUILDING SERVICES
DEPARTMENT, CITY OF OTTAWA**



Drawing Remains the Property of/Copyright Reserved by Gino J. Aiello Landscape Architect. Do Not Use or Reproduce Without Approval of Gino J. Aiello.

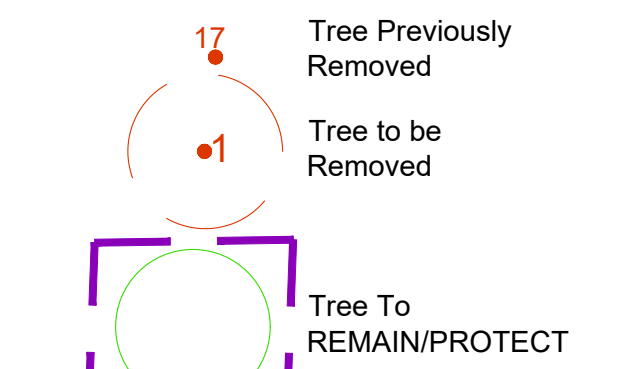
NOT TO BE USED FOR CONSTRUCTION UNLESS INDICATED BY REVISION: "FOR LANDSCAPE CONSTRUCTION"

Contractor is Responsible for Verification of Site Locations of all Utilities. Report any Discrepancies Between Site and Drawing Immediately to Gino J. Aiello. Do Not Proceed Until Clarified.

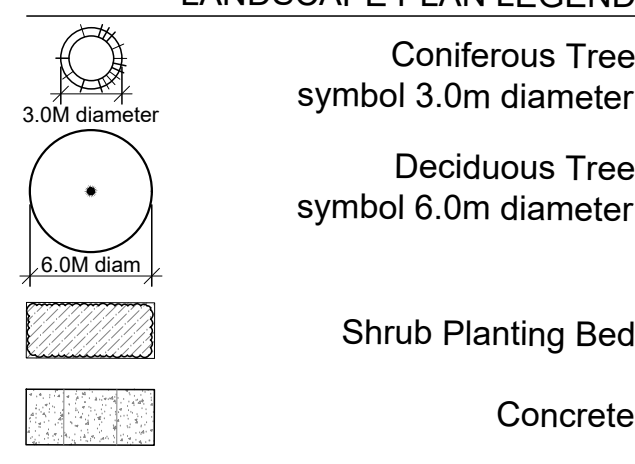
TURF AREAS TO BE SOD CW 150MM DEPTH TOPSOIL ON APPROVED SUBGRADE | SOD TO BE #1 GRADE TURFGRASS NURSERY SOD per NSGA - Fine Fescue/Kentucky Bluegrass Sod | PLANTING MIX TO BE APPROVED BY LANDSCAPE ARCHITECT | PLANT MATERIAL TO MEET CNLA STANDARDS/BE APPROVED BY LANDSCAPE ARCHITECT PRIOR TO PLANTING ALL MATERIALS & WORK TO BE MAINTAINED UNTIL FINAL ACCEPTANCE, (MOWING TURF, WEEDING BEDS, WATERING TURF & PLANTS) & INCLUDE 1 YEAR WARRANTY FROM DATE OF FINAL ACCEPTANCE | PROVIDE WATERING OF ALL PLANT MATERIAL AS REQUIRED FOR PROPER ESTABLISHMENT, UNTIL END OF WARRANTY PERIOD | REFER TO CIVIL ENGINEER'S DRAWING FOR ELEVATIONS / GRADING |

The Landscape Plan is to be read in conjunction with the grading, servicing, site and survey plan | Bare root material to be planted in season only | All plant material locations to be staked on site by the landscape contractor and checked by the landscape architect prior to planting | All trees to be preserved on or directly adjacent to the site will be protected | Plant material are to be installed a minimum of 3.0m away from any part of any hydro transformer, 3.0m corridor between a fire hydrant and the curb, a 2.5m radius beside or behind a fire hydrant, 2.0m from any servicing/utility line or structure |

TCR - REFER TO REPORT BY IFS



LANDSCAPE PLAN LEGEND

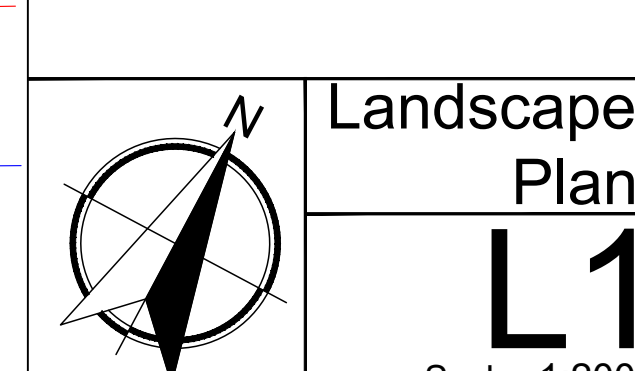


#	Revision	Date
5	per CITY Forestry Comments	2024 10 21
4	per CITY Forestry Comments	2024 10 15
3	per CITY COMMENTS	2024 10 03
2	per Latest TCR JULY 15 2024	2024 08 02
1	per Latest Site/Civil/Boundary	2024 05 14

PROPERTY OWNER
Baseline Constellation Property Inc.

GJA INC.
GINO J. AIELLO | LANDSCAPE ARCHITECT
GJALA.COM | 613 298 5130 | GINO@GJALA.COM
100 BERRY ROAD UNIT # 11 OTTAWA ONTARIO K1R 7S7

APARTMENT BUILDING
2140 BASELINE ROAD



D07-12-18-0084