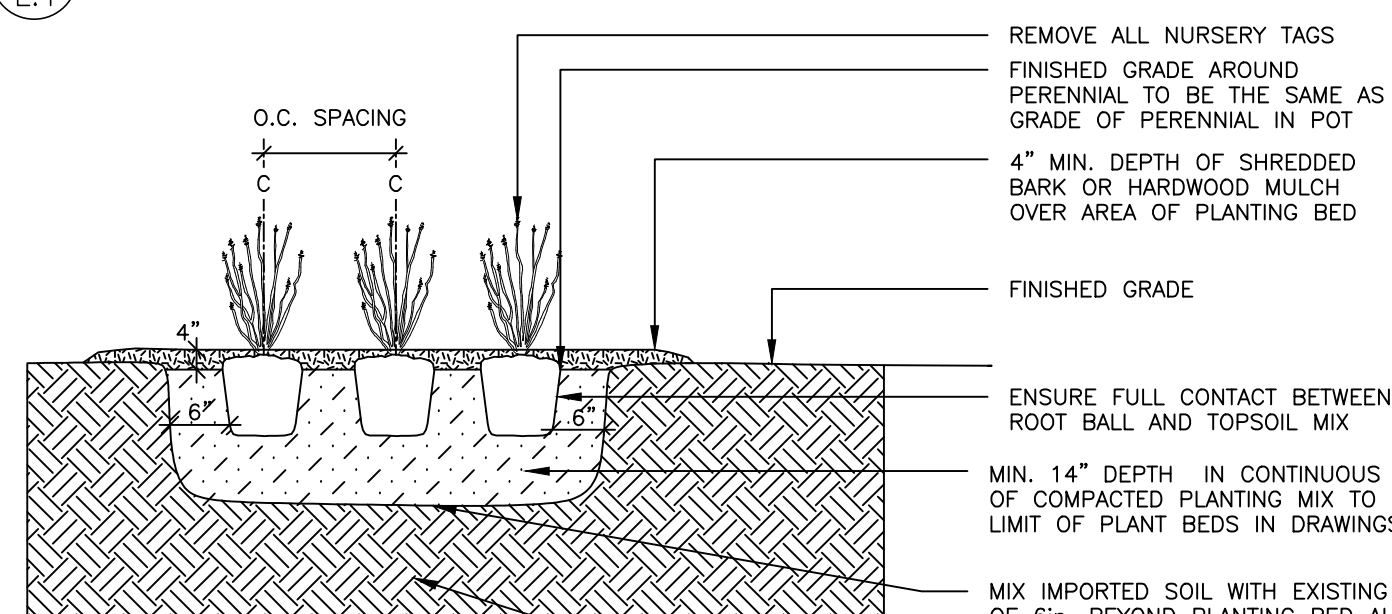


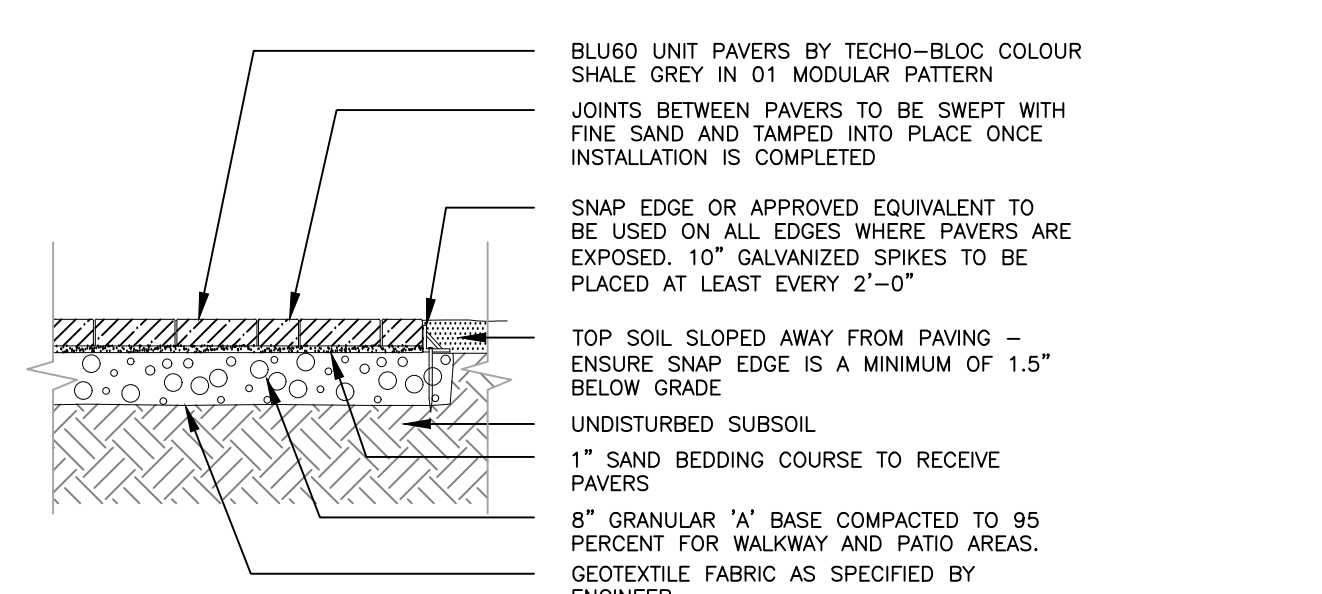
- SPECIFICATIONS:**
1. TOPSOIL MIX. SEE SPEC.
 2. SYNTHETIC BURLAP IS NOT ALLOWED.
 3. WATER THOROUGHLY AFTER INSTALLATION.
 4. CUT & REMOVE TOP 1/3 OF ROPE AND BURLAP FROM ROOT BALL. IF CONTAINER IS NON-ORGANIC REMOVE COMPLETELY.
 5. SCARIFY SUBGRADE PIT BOTTOM AND SIDES TO MIN. 6"

1 SHRUB PLANTING n.t.s.

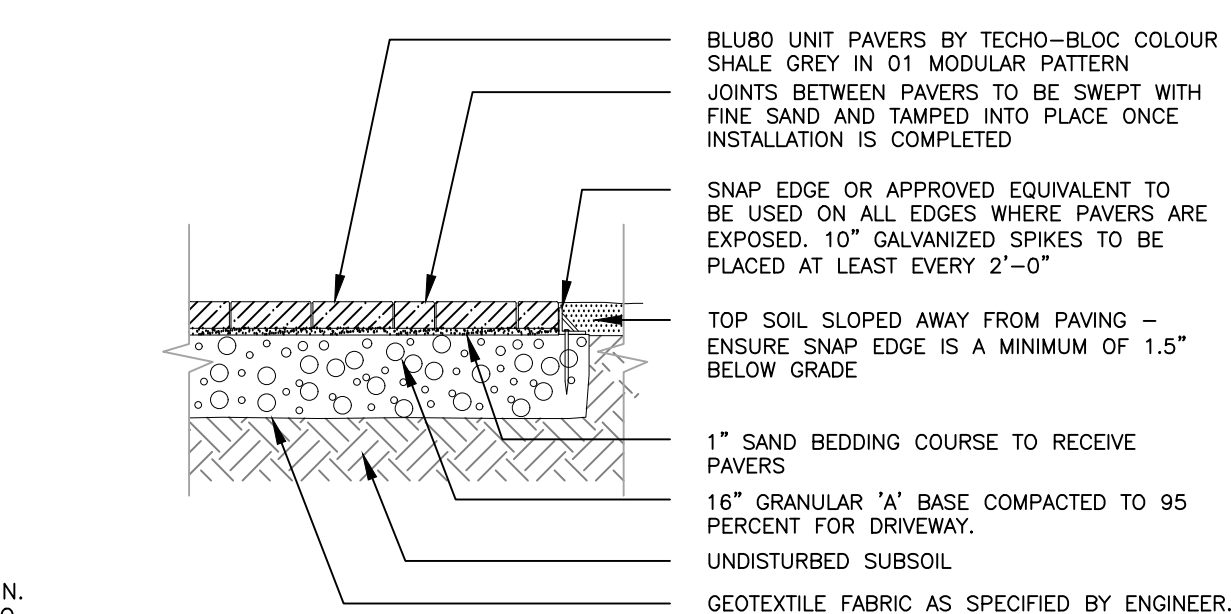


- SPECIFICATIONS:**
1. TOPSOIL MIX. SEE SPEC.
 2. WATER THOROUGHLY AFTER INSTALLATION.
 3. IF CONTAINER IS NON-ORGANIC REMOVE COMPLETELY.

2 PERENNIAL & ORNAMENTAL GRASS PLANTING n.t.s.



3 UNIT PAVING - PATIO & WALKWAYS n.t.s.



4 UNIT PAVING - DRIVEWAY n.t.s.

Plant List 1136 Gabriel Street (on City r.o.w) 31-Oct-24
Orleans ON

| Shrubs | Key | Qty | Botanical Name | Common Name | Size | Cdn | Notes | Revisions |
|--------|-----|-----|-----------------------------------|---------------------------------|--------------|------------|-------|-----------|
| C.POD | 3 | | Physocarpus opulifolius 'Diabolo' | Diabolo Ninebark Shrub Standard | 150 cm ht gr | 15 gal pot | | |
| C.TCN | 6 | | Taxus cuspidata 'Nana Aureoscens' | Dwarf Golden Japanese Yew | | 2 gal pot | | |

| Perennials/Grasses/Groundcovers | Key | No | Botanical Name | Common Name | Size | Cdn | Notes | Revisions |
|---------------------------------|-----|----|-------------------------------|----------------------------|-----------|----------------|-------|-----------|
| C.HH | 12 | | Hemerocallis x 'Stella D'Oro' | Stella Doro Hybrid Daylily | 1 gal pot | plant 18" o.c. | | |
| C.SS* | 11 | | Schizachyrium scoparium | Little Bluestem Grass | 1 gal pot | plant 36" o.c. | | |

* Indicates native plants

Plant List 1136 Gabriel Street (on private property) 31-Oct-24
Orleans ON

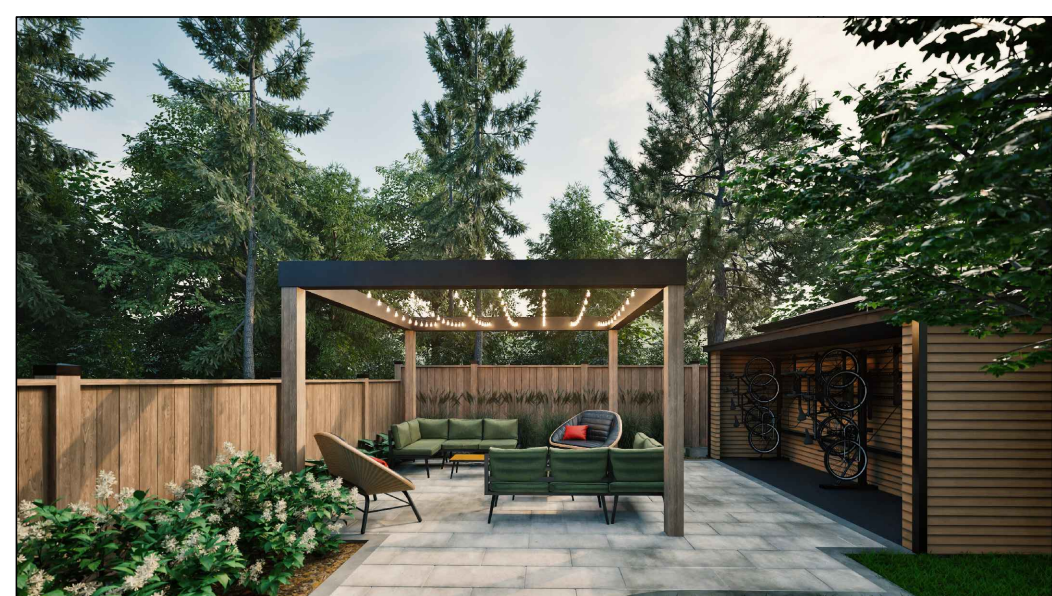
| Shrubs | Key | Qty | Botanical Name | Common Name | Size | Cdn | Notes | Revisions |
|--------|-----|-----|--|--------------------------------|--------------|-----------|-------|-----------|
| HPL | 6 | | Hydrangea arborescens 'Invincible Limonetta' | Invincible Limonetta Hydrangea | | 2 gal pot | | |
| JCD | 6 | | Juniperus communis var 'Depressa' aurea | Canadian Golden Juniper | 50 cm spr | 5 gal pot | | |
| SMP | 2 | | Dwarf Korean Lilac Standard | Syringa meyeri 'Palibin' | 125 cm ht gr | 7 gal pot | | |
| POT | 4 | | Physocarpus opulifolius Tiny Wine | Tiny Wine Ninebark | | 2 gal pot | | |
| SJN | 4 | | Spiraea japonica Neon Flash | Neon Flash Spiraea | 60 cm ht | 3 gal pot | | |

| Perennials/Grasses/Groundcovers | Key | No | Botanical Name | Common Name | Size | Cdn | Notes | Revisions |
|---------------------------------|-----|----|--|----------------------------|-----------|----------------|-------|-----------|
| CAK | 19 | | Calamagrostis acutiflora 'Karl Forester' | Feather Reed Grass | 1 gal pot | plant 32" o.c. | | |
| EP* | 22 | | Echinacea purpurea | Purple Coneflower | 1 gal pot | plant 18" o.c. | | |
| HH | 12 | | Hemerocallis x 'Stella D'Oro' | Stella Doro Hybrid Daylily | 1 gal pot | plant 18" o.c. | | |
| SS* | 20 | | Schizachyrium scoparium | Little Bluestem Grass | 1 gal pot | plant 36" o.c. | | |

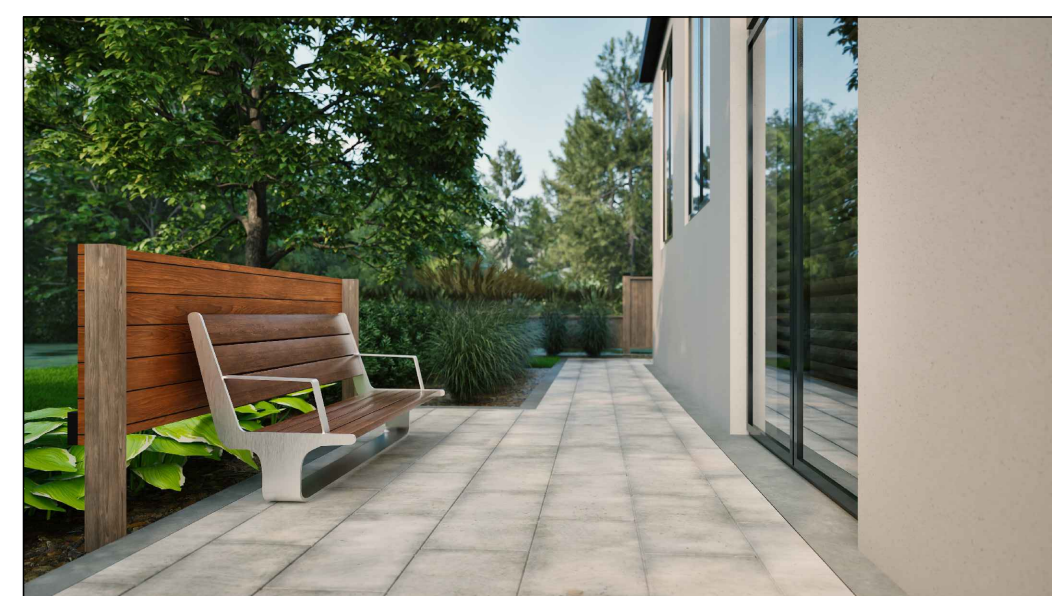
* Indicates native plants



ENTRY SIGN



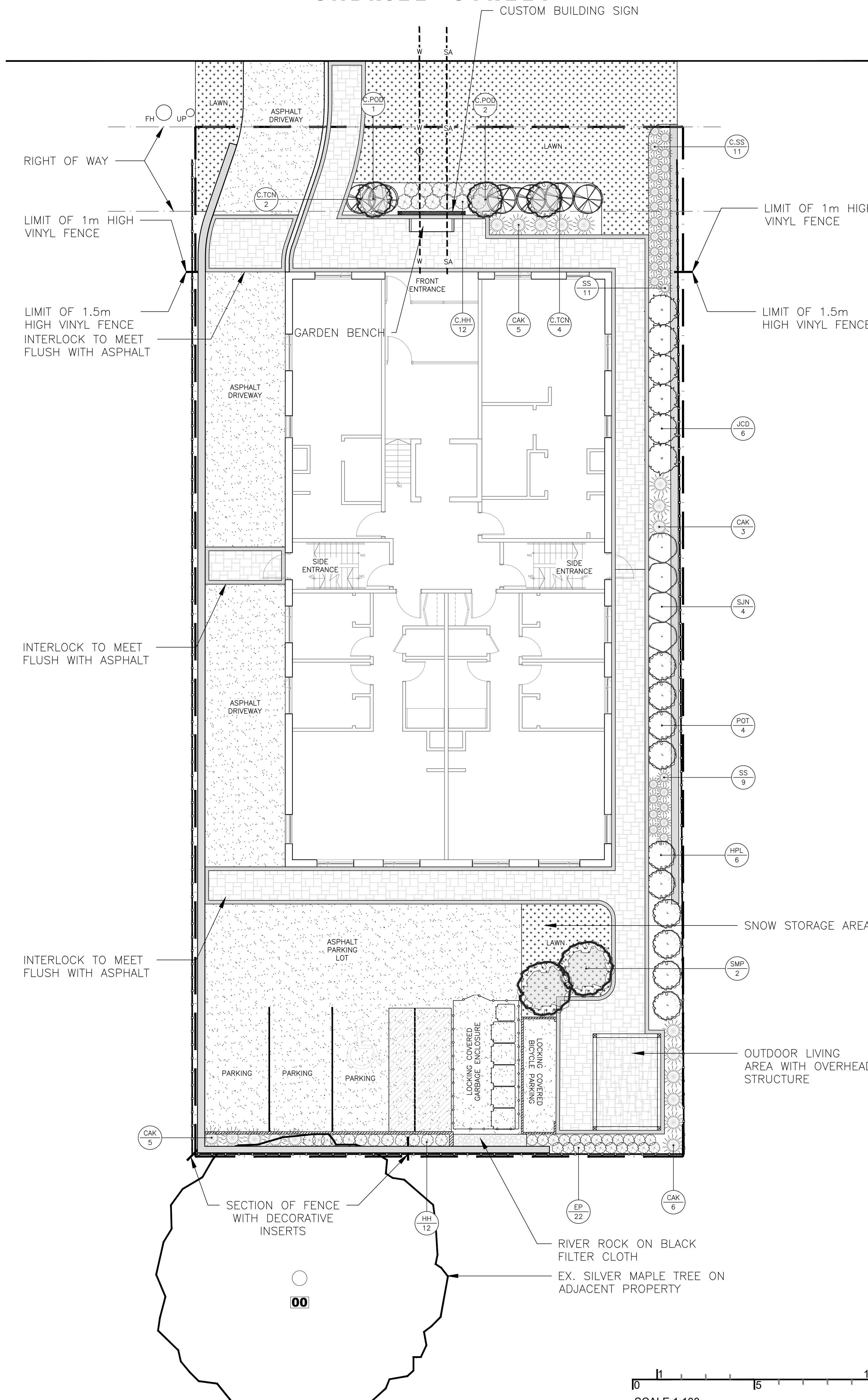
BACKYARD LOUNGE AREA



GENERAL NOTES

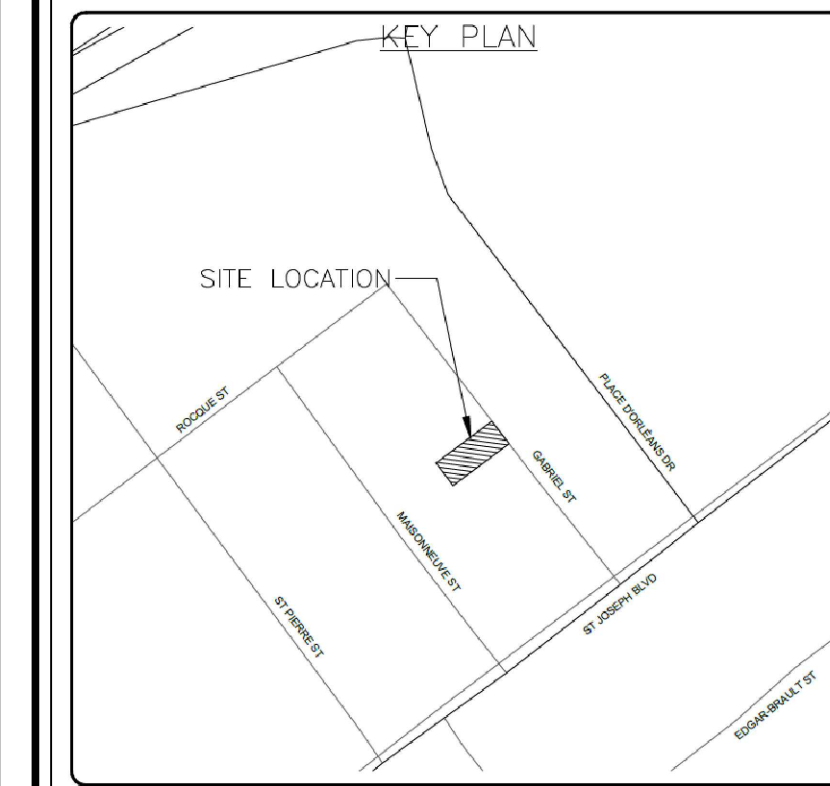
1. THIS PLAN WAS PREPARED IN CONJUNCTION WITH THE GEOTECHNICAL INVESTIGATION FINAL REPORT PREPARED BY EXP SERVICES INC. DATED 2024-07-31.
2. PLEASE NOTE BECAUSE OF THE MEDIUM TO HIGH POTENTIAL FOR SOIL VOLUME CHANGE OF THE SENSITIVE SOILS ON SITE NO TREES ARE INTEGRATED ON THIS PLAN.
3. THIS DRAWING TO BE READ IN CONJUNCTION WITH ARCHITECTURAL DRAWINGS AND OTHER CONSULTANTS DRAWINGS. SPECIFICALLY REFER TO THE TREE CONSERVATION REPORT PREPARED BY DENDRON, GRADING AND SERVICES PLAN AS WELL AS GEO-TECHNICAL INVESTIGATION REPORT ALL PREPARED BY EXP SERVICES INC.
4. IT IS THE RESPONSIBILITY OF THE APPROPRIATE CONTRACTOR OR OFFICIAL TO REPORT ANY ERRORS, OMISSIONS OR DISCREPANCIES IN THIS PLAN WITH ACTUAL CONDITIONS OR OTHER CONSULTANT PLANS PRIOR TO COMMENCING WORK. THE LANDSCAPE ARCHITECT IS NOT RESPONSIBLE FOR SUBSURFACE CONDITIONS.
5. IT IS THE RESPONSIBILITY OF THE APPROPRIATE CONTRACTOR TO OBTAIN ALL REQUIRED PERMITS AND TO OBEY ALL LOCAL BYLAWS AND REGULATIONS.
6. IT IS THE RESPONSIBILITY OF THE APPROPRIATE CONTRACTOR TO DETERMINE THE LOCATION OF ALL UNDERGROUND SERVICES BEFORE THE START TO INCLUDE: TELEPHONE CABLES, CABLE TELEVISION, HYDRO CABLES, LIGHTS AND POWER LINES, WEEPING TILES, STORM AND SANITARY SEWERS, NATURAL GAS LINES, IRRIGATION LINES, ETC.
7. THE CONTRACTOR IS TO REINSTATE ALL AREAS AND ITEMS DAMAGED AS A RESULT OF CONSTRUCTION ACTIVITIES.
8. PLANT SUBSTITUTIONS WILL NOT BE ACCEPTED WITHOUT PRIOR APPROVAL OF THE LANDSCAPE ARCHITECT IN WRITING.
9. POSITIVE DRAINAGE TO BE MAINTAINED AT ALL TIMES AWAY FROM THE BUILDING. THIS DRAWING NOT TO BE USED FOR GRADING. REFER TO ENGINEER'S DRAWING FOR GRADING.
10. BASE INFORMATION FOR THIS PLAN WAS PREPARED USING THE SURVEY PLAN PREPARED BY ANNIS O'SULLIVAN VOLLEBECK LTD. DATED JULY 27, 2023.

GABRIEL STREET



LEGEND

- PROPOSED DECIDUOUS TREE
- PROPOSED SHRUBS
- PROPOSED PERENNIALS
- PROPOSED GRASSES
- LAWN AREA
- INTERLOCKING PAVERS
- ASPHALT
- NEW VINYL FENCE
- PROPERTY LINE



| No. | Date | Revision note |
|-----|------------|-------------------------------|
| 5 | Oct 31/24 | Adjustments to planting |
| 4 | Oct 25/24 | Updates to parking area |
| 3 | Oct 21/24 | Adjustments to bicycle access |
| 2 | Oct 09/24 | Issued for review |
| 1 | July 19/24 | Preliminary issued for review |

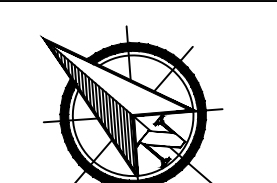
John K. Szczepaniak
LANDSCAPE ARCHITECT
tel: (613) 731-2777 fax: (613) 731-6989
e-mail: jszla@rogers.com



Pulse Societies LTD.
Orleans Development - GBR
1136 Gabriel St.
Ottawa, ON - K1C 1K8

Landscape Plan

CHK: JKS
DRW: EK
DATE: July 08, 2024
ID: 2024-05
SCALE: 1:100



SCALE: 1:100

L1

2024-05-11 11:36 GABRIEL ST 2024-11-01 DWG ISSUED ON November 1, 2024 12:26:05 PM