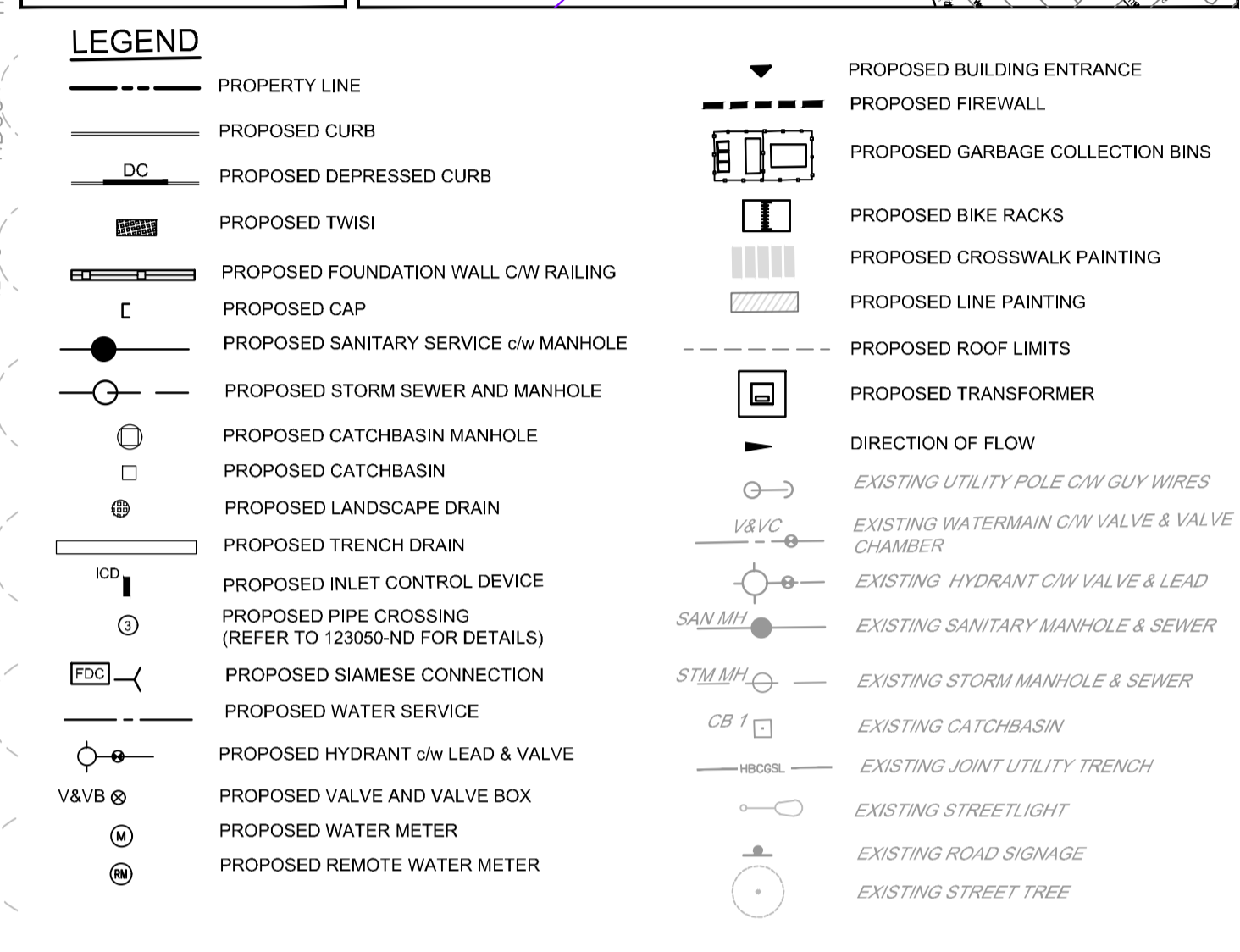
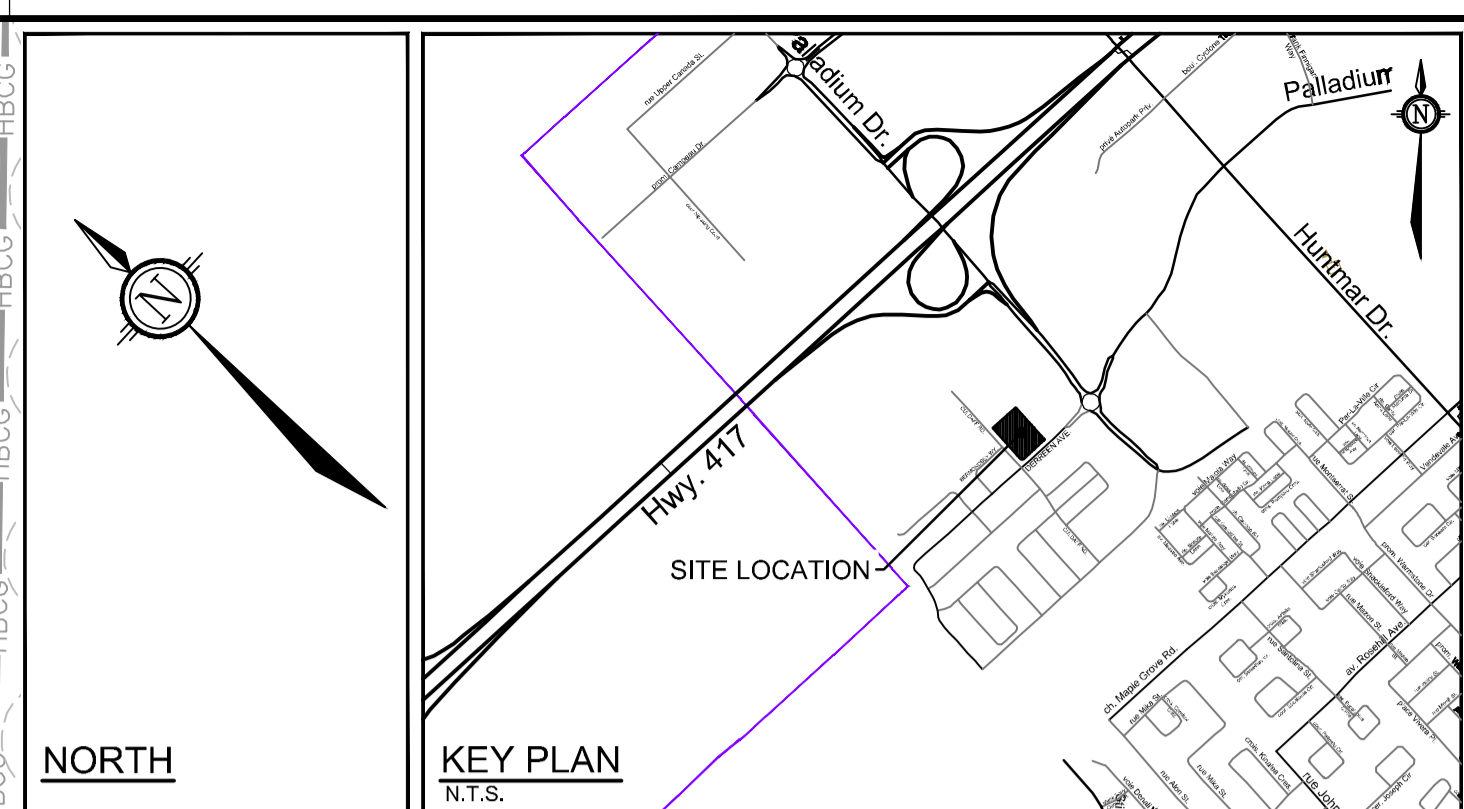


BLOCK 24
(COMMERCIAL)



| CROSSING | LOWER PIPE | HIGHER PIPE | CLEARANCE |
|----------|--------------------------|--------------------------|-----------|
| 1 | 200mm Ø WM OBV = 105.91 | 250mm Ø STM INV = 106.41 | ±0.50m |
| 2 | 250mm Ø SAN OBV = 105.08 | 250mm Ø STM INV = 106.24 | ±1.16m |
| 3 | 200mm Ø WM OBV = 105.76 | 250mm Ø STM INV = 106.26 | ±0.50m |

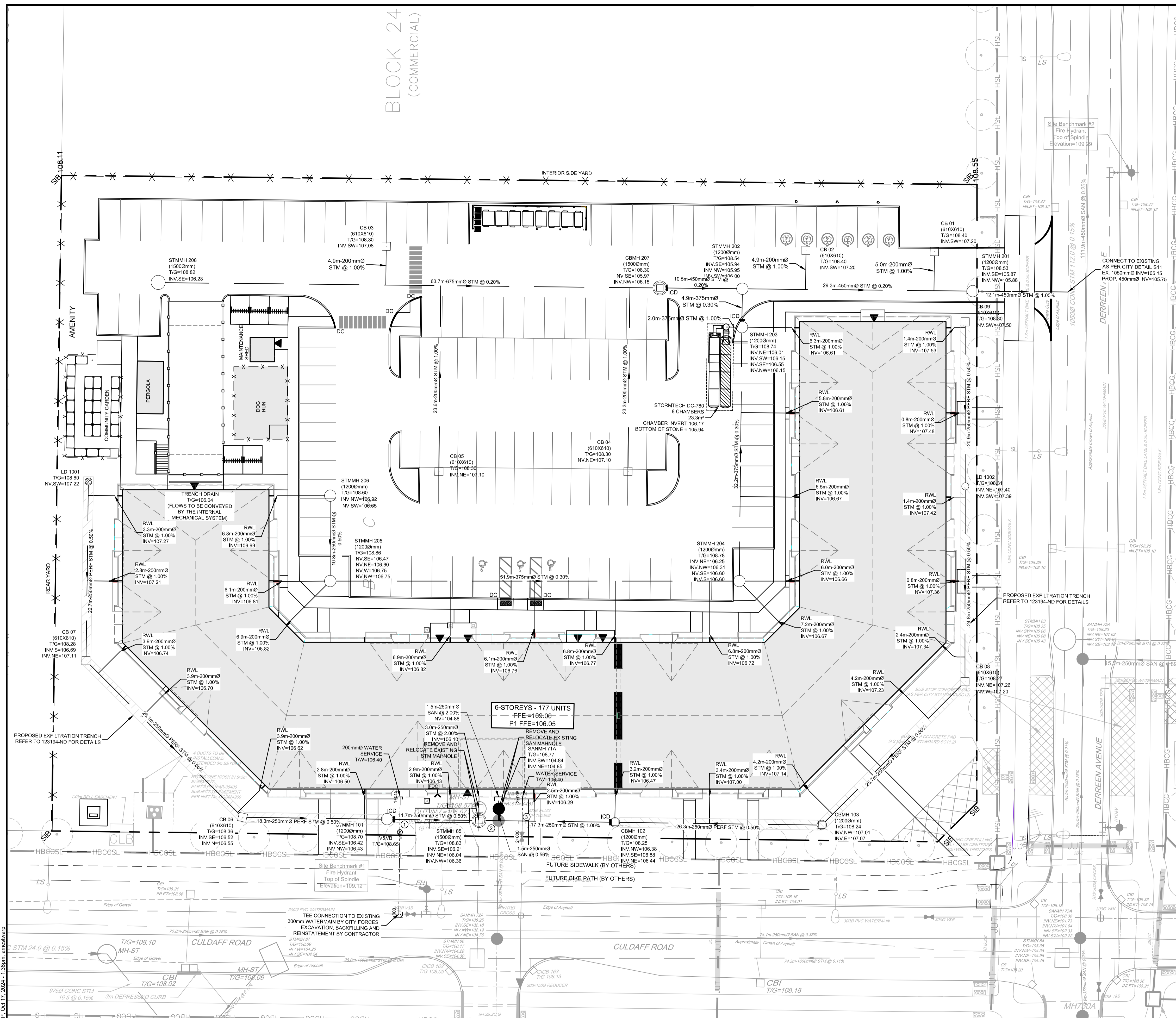
| STATION | SURFACE ELEVATION | T/WM ELEVATION | COMMENTS |
|----------|-------------------|----------------|---|
| 1+000.00 | 108.32 | 105.85* | CONNECTION TO EXISTING 300mm Ø WATERMAIN |
| 1+010.39 | 108.65 | 106.25 | PROPOSED VALVE AND VALVE BOX |
| 1+012.01 | 108.72 | 105.91 | CROSS BELOW 250mm STM AS PER CITY OF OTTAWA DETAIL W25 (CLEARANCE = ±0.50m) |
| 1+014.88 | 108.80 | 78.40 | CAP SERVICE 1.0m FROM THE FOUNDATION WALL |

| STATION | SURFACE ELEVATION | T/WM ELEVATION | COMMENTS |
|----------|-------------------|----------------|---|
| 2+000.0 | 108.63 | 106.23* | CONNECTION TO EXISTING 200mm VALVE EXISTING CAP AND PIPE PAST VALVE TO BE REMOVED |
| 2+002.0 | 108.70 | 105.76 | CROSS ABOVE 300mm STM AS PER CITY OF OTTAWA DETAIL W25.2 (CLEARANCE = ±0.50m) |
| 2+005.06 | 80.80 | 78.40 | CAP SERVICE 1.0m FROM THE FOUNDATION WALL |

CONTRACTOR TO CONFIRM THE ELEVATION OF THE EXISTING WATER STUB AND NOTIFY THE ENGINEER IF DIFFERENT

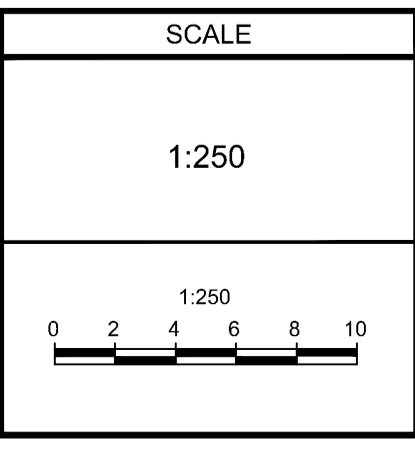
| STRUCTURE | ORIFICE ICD SIZE | ICD INVERT (m) | T/G (m) | 100-yr HGL (m) | 100-yr HEAD (m) | 100-yr RELEASE RATE (L/s) |
|-----------|------------------|----------------|---------|----------------|-----------------|---------------------------|
| STMMH 101 | 94mm PLATE | 106.42 | 108.70 | 107.74 | 1.19 | 20.8 |
| CBMH 102 | 94mm PLATE | 106.38 | 108.25 | 107.95 | 1.44 | 22.8 |
| STMMH 203 | 94mm PLATE | 106.01 | 108.74 | 108.03 | 1.83 | 26.0 |
| CBMH 207 | 127mm PLATE | 105.97 | 108.30 | 108.53 | 2.34 | 53.5 |

- NOTE:
- ALL SERVICE CONNECTIONS AND CATCHBASIN CONNECTIONS TO BE MADE PER CITY OF OTTAWA DETAIL S11, S11.2, AND S11.2.1.
 - BACKWATER VALVES TO BE PROVIDED ON ALL STORM AND SANITARY LATERALS AS PER CITY OF OTTAWA DETAILS S14, S14.1, AND S14.2. DOWNSTREAM OF ANY GRAVITY OUTLET FROM THE BUILDING. REFER TO MECHANICAL PLANS FOR DETAIL.
 - ALL FLOWS FROM THE UNDERGROUND PARKING GARAGE ARE TO BE CONVEYED TO THE SANITARY SERVICE SANITARY FLOWS ARE TO BE PUMPED TO THE PROPOSED SANITARY SERVICE (TYP).
 - PROPOSED SERVICES TO BE SLEEVED THROUGH FOUNDATION WALL. FOUNDATION DRAINS TO BE PUMPED TO STORM SERVICE.
 - PROPOSED TRENCHDRAINS ARE TO BE CONVEYED TO THE FREE FLOWING STM OUTLET CONNECTION TO STMMH 85, REFER TO THE MECHANICAL DRAWINGS FOR DETAILS.
 - ROOF DOWNSPOUTS ARE TO BE DIRECTLY CONNECTED TO THE PROPOSED STORMWATER MANAGEMENT SYSTEM. REFER TO ARCHITECT AND MECHANICAL PLANS FOR DETAILS. REFER TO MECHANICAL DRAWINGS FOR FURTHER DETAILS ON INTERNAL PLUMBING (TYP).
- REFER TO 123194-ND FOR ADDITIONAL NOTES & DETAILS



NOTE:
THE POSITION OF ALL POLE LINES, CONDUITS, WATERMANS, SEWERS AND OTHER UNDERGROUND AND OVERGROUND UTILITIES AND STRUCTURES IS NOT NECESSARILY SHOWN ON THE CONTRACT DRAWINGS, AND WHERE SHOWN, THE ACCURACY OF THE POSITION OF SUCH UTILITIES AND STRUCTURES IS NOT GUARANTEED, BEFORE STARTING WORK, DETERMINE THE EXACT LOCATION OF ALL SUCH UTILITIES AND STRUCTURES AND ASSUME ALL LIABILITY FOR DAMAGE TO THEM.

| No. | REVISION | DATE | BY |
|-----|---------------------------------|-----------|-----|
| 1. | ISSUED FOR SITEPLAN APPLICATION | OCT/17/24 | ARM |



DESIGN: ARM
CHECKED: GJM
DRAWN: MF/ARM
CHECKED: ARM
APPROVED: GJM

FOR REVIEW ONLY

PROFESSIONAL ENGINEER
A.R. MESTWAP
100201604
OCT 17, 2024
PROVINCE OF ONTARIO

PROFESSIONAL ENGINEER
G.J. MacDONALD
OCT 17, 2024
PROVINCE OF ONTARIO

NOVATECH
Engineers, Planners & Landscape Architects
Suite 200, 240 Michael Coppland Drive
Ottawa, Ontario, Canada K2M 1P6
Telephone: (613) 254-9643
Facsimile: (613) 254-5867
Website: www.novatech-eng.com

LOCATION:
CITY OF OTTAWA
425 CULDAFF ROAD

DRAWING NAME:
GENERAL PLAN OF SERVICES

PROJECT No.: 123194
REV: REV#1
DRAWING No.: 123194-GP