

**PROJECT TEAM**

**Developer/Owner/Applicant**  
 Morley Hoppner  
 1815 Drabing Side Road  
 Ottawa, ON K2M 1L2  
 T: 613-831-2490

**Colonnade Design/For**  
 Kelly Riederer  
 18 Commerce Gate, Suite 200  
 Ottawa, ON K2E 7S0  
 T: 343-900-4175

**Architect**  
 Hobin Architecture Inc.  
 Patrick Flemer  
 63 Pamela Street  
 Ottawa, ON K1S 3K7

**CM**  
 Neustach  
 Francois Theriault  
 240 Mutual Corporate Drive, Suite 200  
 Ottawa, ON K2M 1P0  
 T: 613-254-8643

**Transportation**  
 Neustach  
 Chad Dyckie  
 240 Mutual Corporate Drive, Suite 200  
 Ottawa, ON K2M 1P0  
 T: 613-254-8643

**Landscape Architect**  
 G.P.A. Inc.  
 Greg Aulis  
 1100 Oakbury Road, Unit #19  
 Ottawa, ON K2T 0C2  
 T: 613-226-5130

**Environmental**  
 Paterson Group  
 Mark Dring  
 9 Auriga Drive  
 Ottawa, ON K2E 7T8  
 T: 613-228-7361

**Geotechnical**  
 Paterson Group  
 Scott Dennis  
 9 Auriga Drive  
 Ottawa, ON K2E 7T8  
 T: 613-228-7361

**Wild & Snow**  
 Gradient Wint  
 David Wilton and Joshua Foster  
 127 Wainwright Road, Ottawa, ON K0A 1L0  
 T: 613-836-0954

**Survey**  
 Skurter Geomatics Ltd.  
 Brian Wilson  
 1351 Cyrie Avenue, Suite 400  
 Ottawa, ON K2E 5G4  
 T: 613-722-4420

NOT FOR CONSTRUCTION

no.	date	revision
1	241101	Issued for SPC
2	240920	Issued for ZBLA
3	240731	Issued for SPC

IT IS THE RESPONSIBILITY OF THE APPROPRIATE CONTRACTOR TO CHECK AND VERIFY ALL DIMENSIONS ON SITE AND REPORT ALL ERRORS AND/OR OMISSIONS TO THE ARCHITECT.

ALL CONTRACTORS MUST COMPLY WITH ALL PERTINENT CODES AND BY-LAWS.

DO NOT SCALE DRAWINGS.

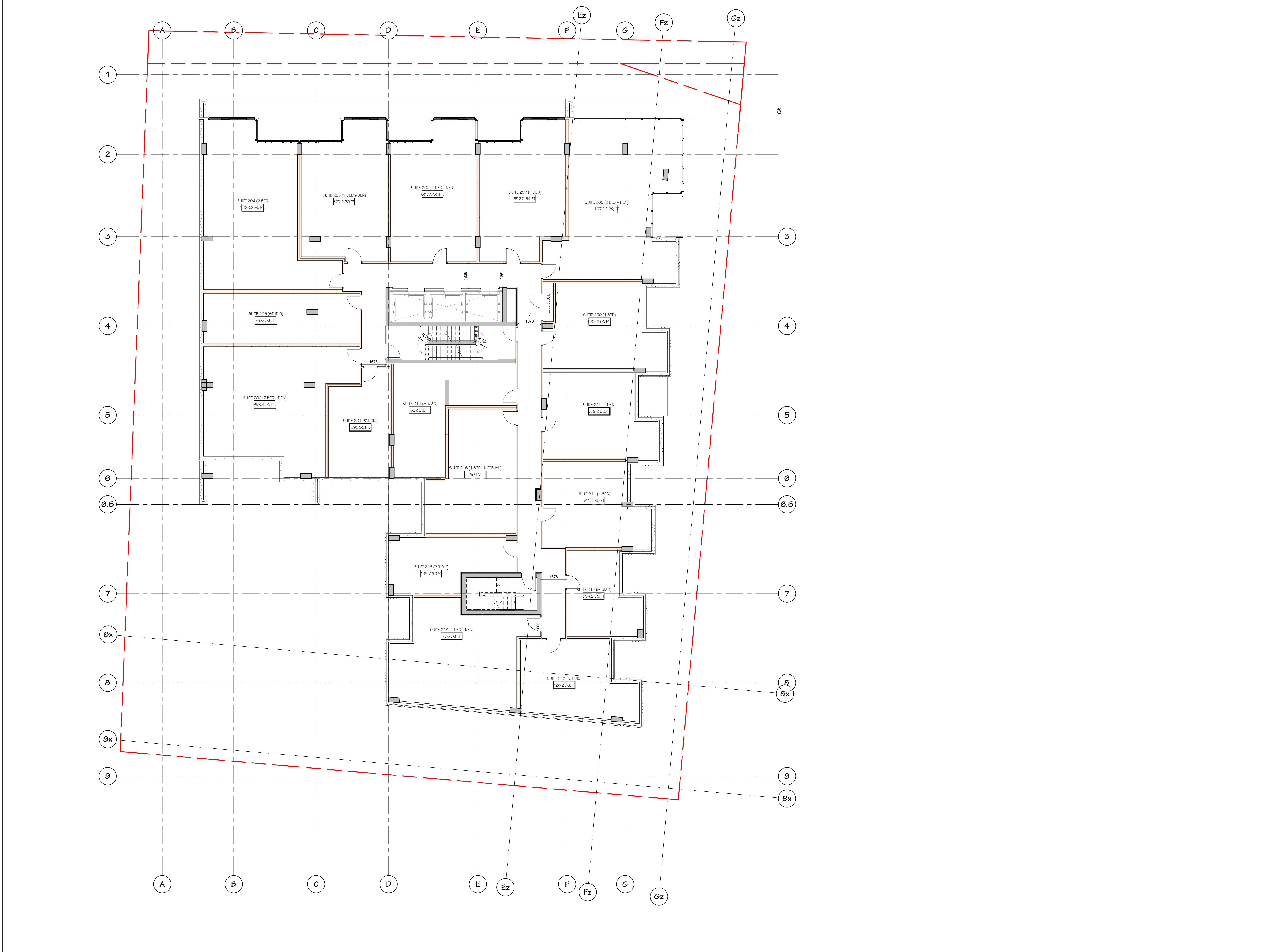
COPYRIGHT RESERVED.

**Hobin Architecture Incorporated**  
 63 Pamela Street  
 Ottawa, Ontario  
 Canada K1S 3K7  
 T: 613-238-7200  
 F: 613-235-2655  
 E: mail@hobinarc.com  
 hobinarc.com

**PROJECT**  
 1950 SCOTT STREET

**DRAWING TITLE**  
 FLOOR PLAN - LEVELS 2-4 - TYPICAL PODIUM 1

<b>DRAWN</b> PB	<b>DATE</b> 07/31/2024	<b>SCALE</b> 1:100
<b>PROJECT</b> 2128	<b>DRAWING NO.</b> SPA - A2.03	<b>REVISION NO.</b> 3049



1 02-LEVEL 2-4 - SPA  
 SPA - A2.03 SCALE: 1:100