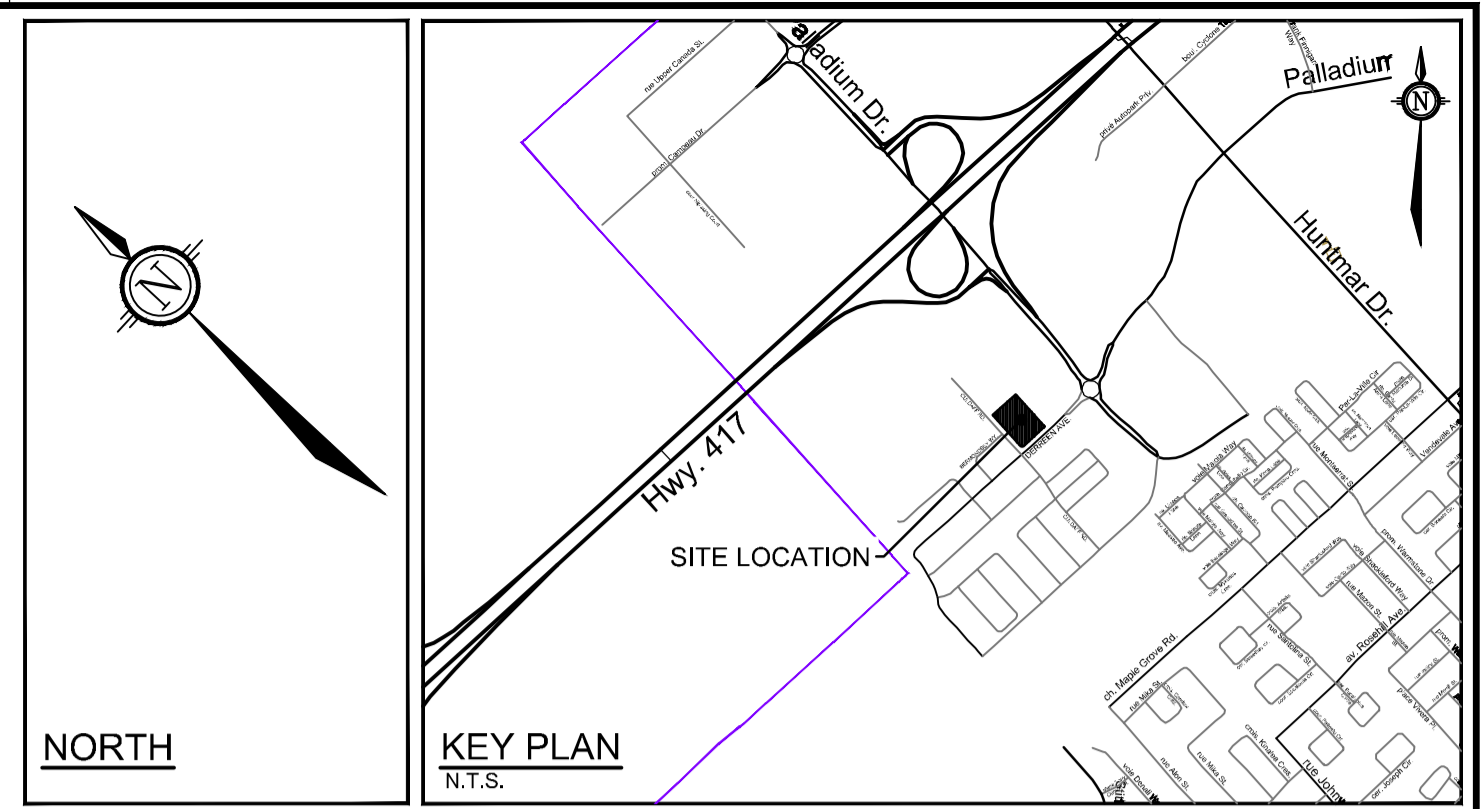
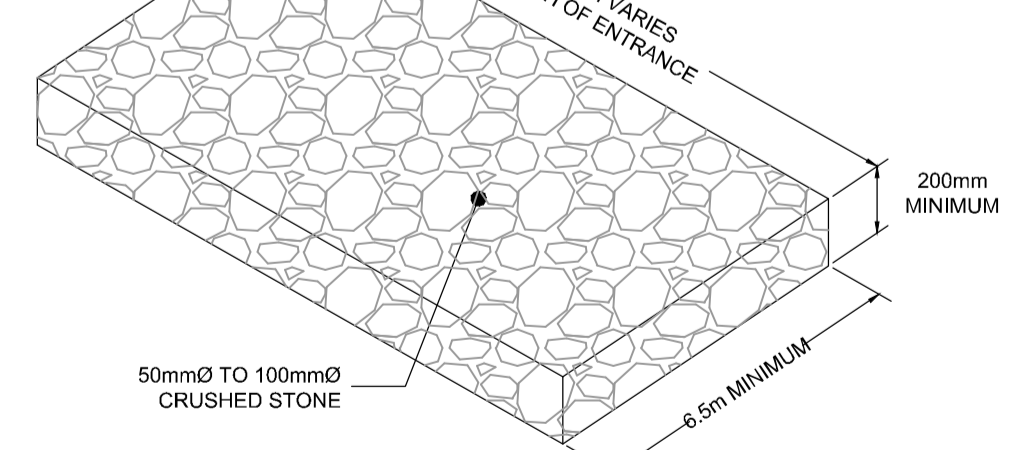
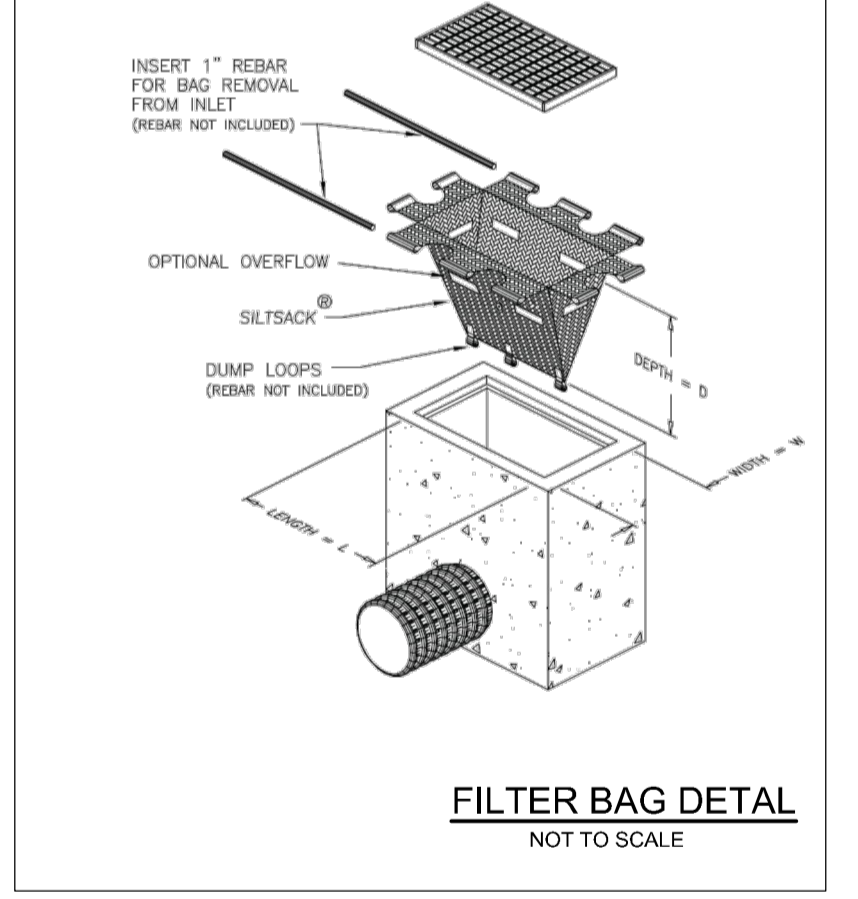


BLOCK 242
(COMMERCIAL)

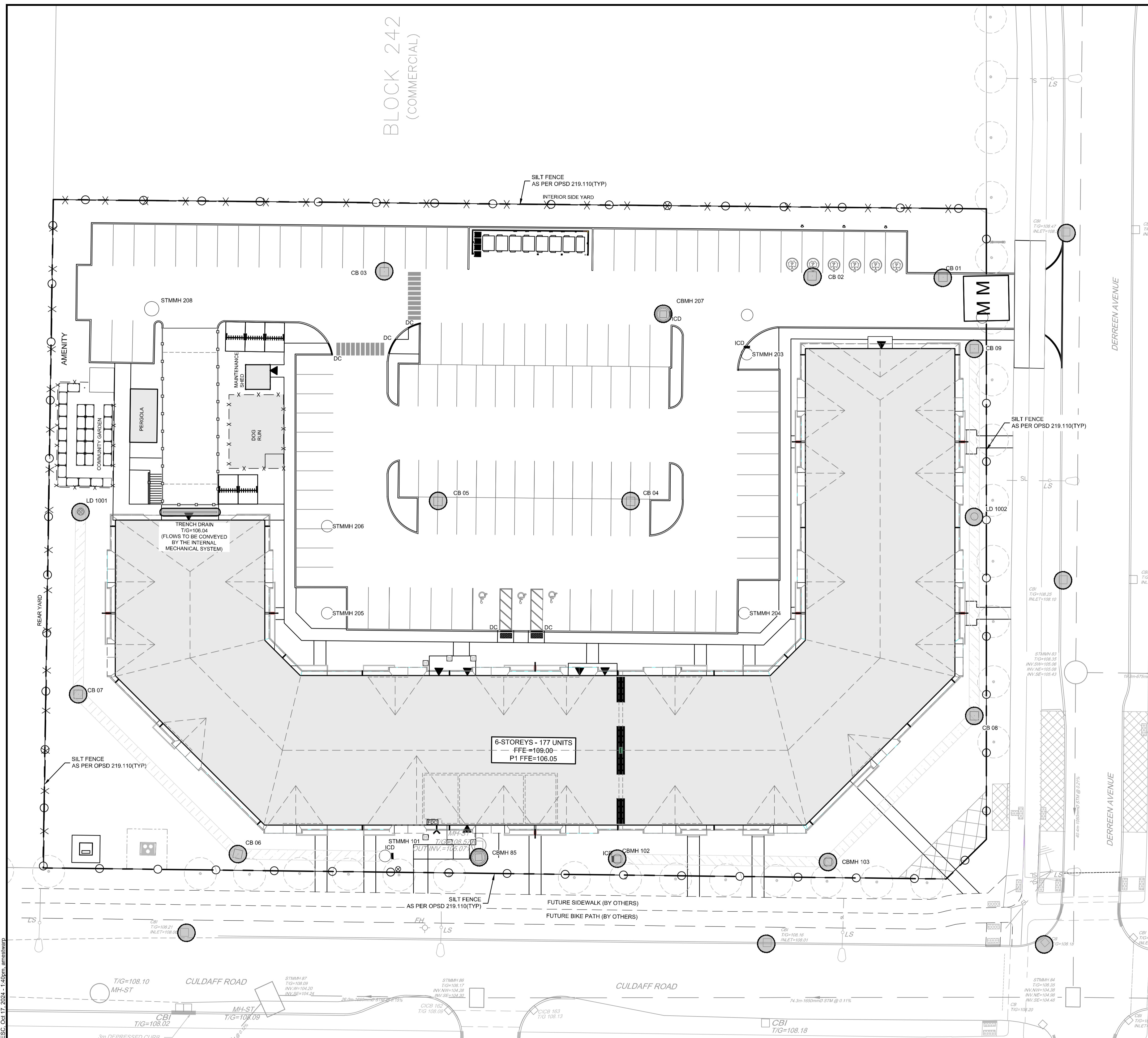


- LEGEND**
- PROPERTY LINE
 - PROPOSED CURB
 - DC PROPOSED DEPRESSED CURB
 - PROPOSED FOUNDATION WALL CW RAILING
 - PROPOSED CAP
 - PROPOSED STORM SEWER AND MANHOLE
 - PROPOSED CATCHBASIN MANHOLE
 - PROPOSED CATCHBASIN
 - PROPOSED LANDSCAPE DRAIN
 - PROPOSED TRENCH DRAIN
 - PROPOSED BUILDING ENTRANCE
 - SWALE c/w SUBDRAIN AND DIRECTION OF FLOW
 - TERRACING 3:1 SLOPE MAX (UNLESS OTHERWISE INDICATED)
 - PROPOSED FIREWALL
 - PROPOSED ROOF LIMITS
 - PROPOSED TRANSFORMER
 - PROPOSED FILTER BAGS AT CATCHBASIN, CATCHBASIN MANHOLES AND TRENCHDRAINS
 - PROPOSED MUD MAT
 - LIGHT DUTY SILT FENCE (OPSD 219.110)
 - EXISTING STORM MANHOLE
 - EXISTING CATCHBASIN
 - EXISTING LIGHT STANDARD
 - EXISTING FENCE

- EROSION AND SEDIMENT CONTROL NOTES:**
- THE CONTRACTOR SHALL IMPLEMENT BEST MANAGEMENT PRACTICES, TO PROVIDE FOR PROTECTION OF THE AREA DRAINAGE SYSTEM AND THE RECEIVING WATERCOURSE, DURING CONSTRUCTION ACTIVITIES. THE CONTRACTOR ACKNOWLEDGES THAT FAILURE TO IMPLEMENT APPROPRIATE EROSION AND SEDIMENT CONTROL MEASURES MAY BE SUBJECT TO PENALTIES IMPOSED BY ANY APPLICABLE REGULATORY AGENCY.
- 1) THE OWNER AGREES TO PREPARE AND IMPLEMENT AN EROSION AND SEDIMENT CONTROL PLAN TO THE SATISFACTION OF THE CITY OF OTTAWA, APPROPRIATE TO THE SITE CONDITIONS, PRIOR TO UNDERTAKING ANY SITE ALTERATIONS (FILLING, GRADING, REMOVAL OF VEGETATION, ETC.) AND DURING ALL PHASES OF SITE PREPARATION AND CONSTRUCTION IN ACCORDANCE WITH THE CURRENT BEST MANAGEMENT PRACTICES FOR EROSION AND SEDIMENT CONTROL SUCH AS BUT NOT LIMITED TO INSTALLING FILTER CLOTHS ACROSS MANHOLE/CATCHBASIN LIDS TO PREVENT SEDIMENTS FROM ENTERING STRUCTURES AND INSTALL AND MAINTAIN A LIGHT DUTY SILT FENCE BARRIER AS REQUIRED.
 - 2) THE CONTRACTOR SHALL PLACE FILTER BAGS UNDER THE CATCHBASIN AND MANHOLE GRATES FOR THE DURATION OF CONSTRUCTION AND WILL REMAIN IN PLACE DURING ALL PHASES OF CONSTRUCTION.
 - 3) SILT FENCING FOR ENTIRE PERIMETER OF SITE, SHALL BE UTILIZED TO CONTROL EROSION FROM THE SITE DURING CONSTRUCTION.
 - 4) THE CONTRACTOR ACKNOWLEDGES THAT FAILURE TO IMPLEMENT EROSION AND SEDIMENT CONTROL MEASURES MAY BE SUBJECT TO PENALTIES IMPOSED BY ANY APPLICABLE REGULATORY AGENCY.
 - 5) PROVIDE MUD MATS AT ALL CONSTRUCTION ACCESS POINTS TO MINIMIZE SEDIMENT TRANSPORT OFFSITE.
 - 6) EROSION AND SEDIMENT CONTROL MEASURES MAY BE MODIFIED IN THE FIELD AT THE DISCRETION OF THE CITY OF OTTAWA SITE INSPECTOR OR CONSERVATION AUTHORITY.



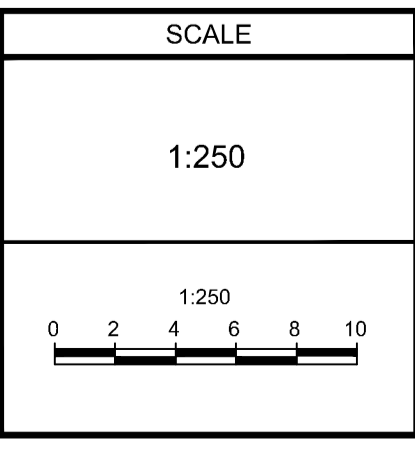
REFER TO 123194-ND FOR ADDITIONAL NOTES & DETAILS



NOTE:
THE POSITION OF ALL POLE LINES, CONDUITS, WATERMANS, SEWERS AND OTHER UNDERGROUND AND OVERGROUND UTILITIES AND STRUCTURES IS NOT NECESSARILY SHOWN ON THE CONTRACT DRAWINGS, AND WHERE SHOWN, THE ACCURACY OF THE POSITION OF SUCH UTILITIES AND STRUCTURES IS NOT GUARANTEED. BEFORE STARTING WORK, DETERMINE THE EXACT LOCATION OF ALL SUCH UTILITIES AND STRUCTURES AND ASSUME ALL LIABILITY FOR DAMAGE TO THEM.

NOT FOR CONSTRUCTION

No.	REVISION	DATE	BY
1.	ISSUED FOR SITEPLAN APPLICATION	OCT/17/24	ARM



FOR REVIEW ONLY

DESIGN: ARM
CHECKED: GJM
DRAWN: MF/ARM
CHECKED: ARM
APPROVED: GJM

LICENSED PROFESSIONAL ENGINEER
A.R. MESTWARP
100201604
OCT. 17, 2024
PROVINCE OF ONTARIO

LICENSED PROFESSIONAL ENGINEER
G.J. McDONALD
OCT. 17, 2024
PROVINCE OF ONTARIO

NOVATECH
Engineers, Planners & Landscape Architects
Suite 200, 240 Michael Cowpland Drive
Ottawa, Ontario, Canada K2M 1P6
Telephone: (613) 254-9643
Facsimile: (613) 254-5867
Website: www.novatech-eng.com

LOCATION CITY OF OTTAWA 425 CULDAFF ROAD	PROJECT No. 123194
DRAWING NAME EROSION AND SEDIMENT CONTROL PLAN	REV#1 REV#1
	DRAWING No. 123194-ESC

M:\2023\123194\CAD\Civil\123194-ESC.dwg, ESC, Oct 17, 2024, 1:40pm, armestwarp