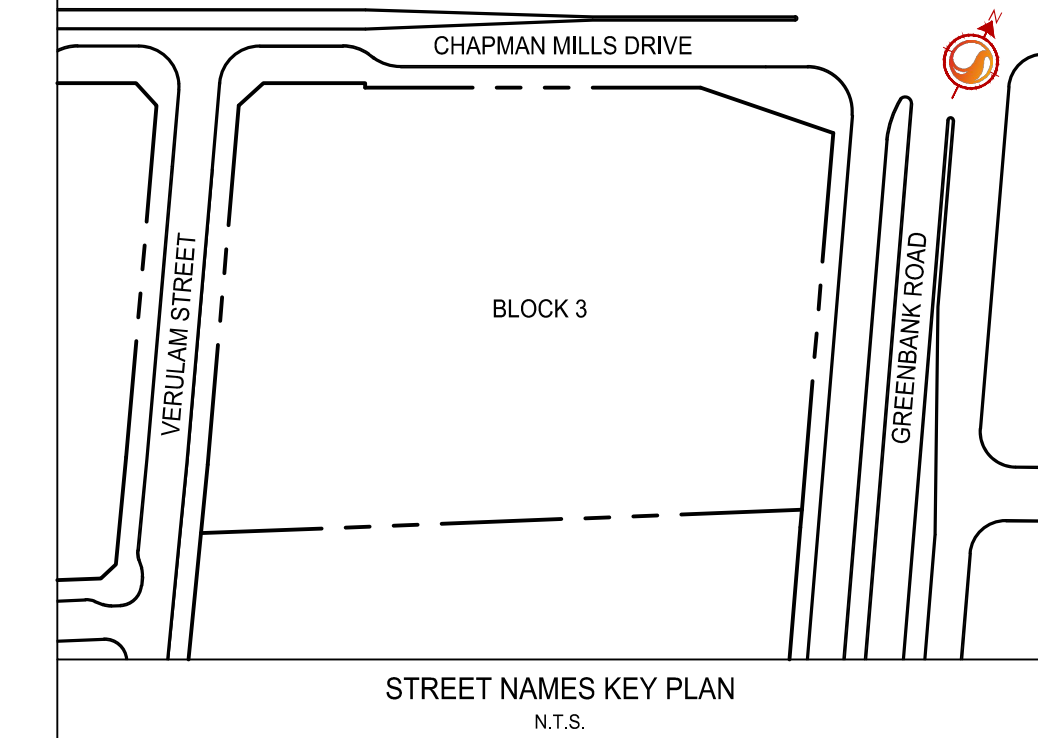
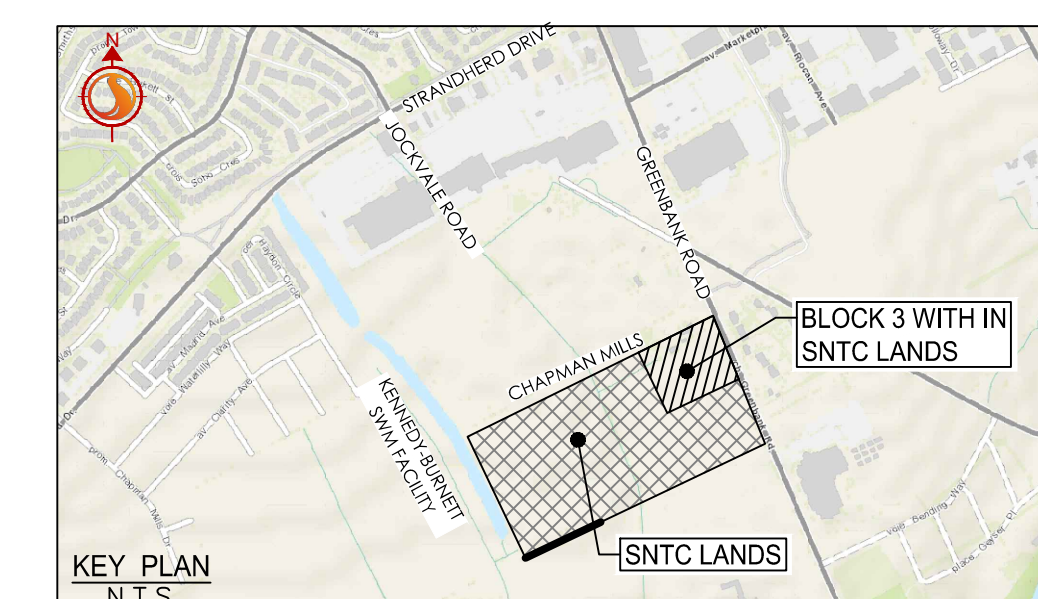
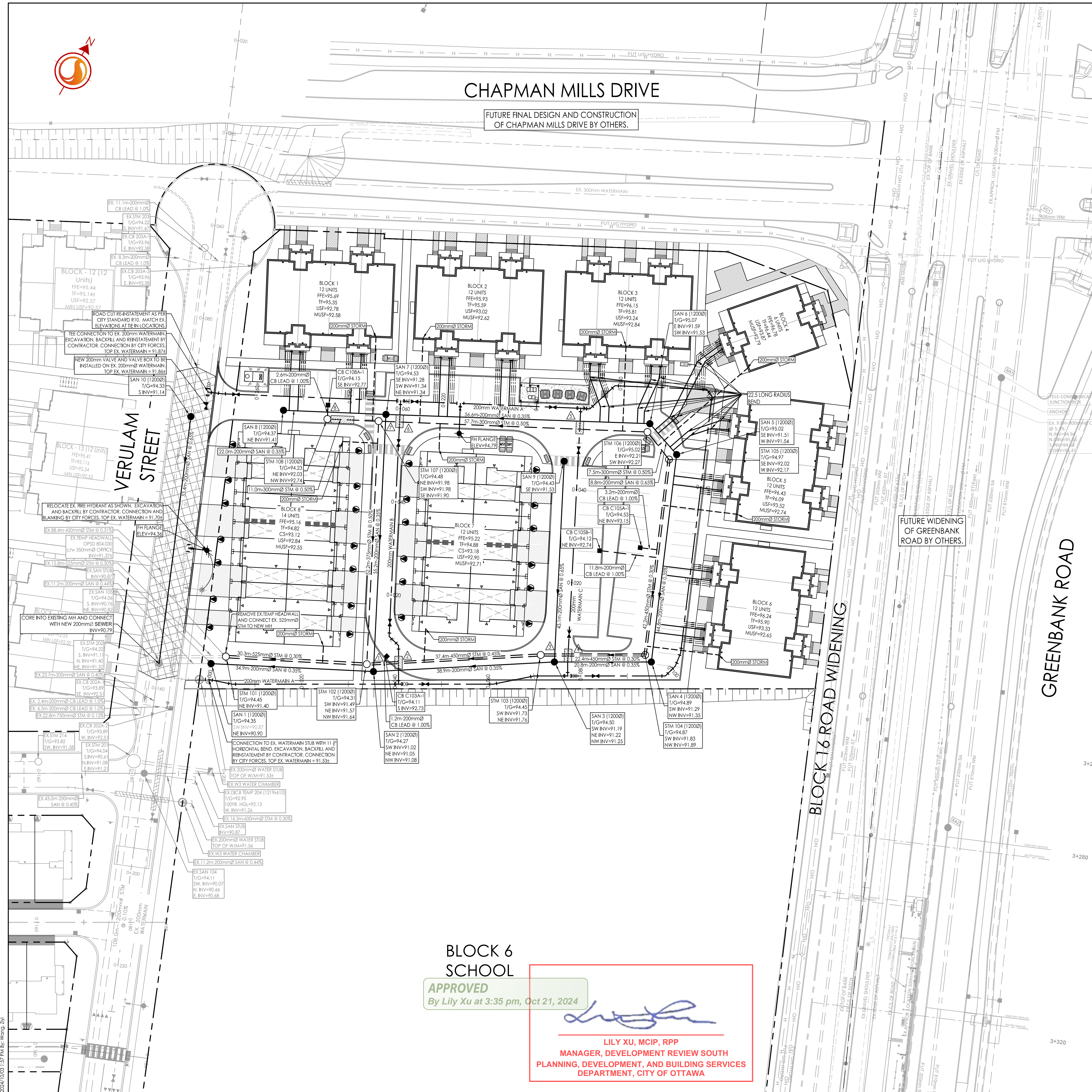




CHAPMAN MILLS DRIVE

FUTURE FINAL DESIGN AND CONSTRUCTION OF CHAPMAN MILLS DRIVE BY OTHERS.



Stantec Consulting Ltd.
400 - 1331 Clyde Avenue
Ottawa ON
Tel. 613.722.4420
www.stantec.com

Copyright Reserved
The Contractor shall verify and be responsible for all dimensions. DO NOT scale the drawings - any errors or omissions shall be reported to Stantec without delay.
The Copyrights to all designs and drawings are the property of Stantec. Reproduction or use for any purpose other than that authorized by Stantec is forbidden.

Legend

- PROPOSED WATERMAIN
- PROPOSED W3 CHAMBER
- PROPOSED VALVE AND VALVE BOX
- PROPOSED VALVE CHAMBER
- PROPOSED REDUCER
- PROPOSED FIRE HYDRANT
- PROPOSED SANITARY SEWER
- PROPOSED STORM SEWER
- PROPOSED CATCHBASIN MANHOLE
- PROPOSED CATCHBASIN
- EXISTING WATERMAIN
- EXISTING W3 CHAMBER
- EXISTING VALVE AND VALVE BOX
- EXISTING VALVE CHAMBER
- EXISTING REDUCER
- EXISTING FIRE HYDRANT
- EXISTING COMBINED SEWER
- EXISTING STORM SEWER
- EXISTING CATCHBASIN MANHOLE
- EXISTING CATCHBASIN
- EXISTING INSULATION ON STORM SEWER WHERE COVER IS LESS THAN 2.0m. THERMAL INSULATION ON WATERMAIN WHERE COVER IS LESS THAN 2.4m AS PER W22.
- PROPOSED 2hr RATED FIRE WALL LOCATION (BLOCKS 7 AND 8)
- BACK TO BACK TERRACE HOME SERVICES
- 200mm STORM SERVICE PVC SDR 26 @ 1% MIN (1 PER BLOCK)
- 150mm SANITARY SERVICE PVC SDR 26 @ 1% MIN (PER STACK)
- 19mm PEX TUBING WATER SERVICE C/W CURB STOP AND SERVICE POST, METER AND REMOTE METER, (PER UNIT)
- STANDPOST ON PRIVATE SIDE TO BE LOCATED 0.9m BEHIND FACE OF CURB OR BACK OF SIDEWALK. STANDPOST ON PUBLIC SIDE TO BE ON PROPERTY LINE.
- ROAD CUT RE-INSTATEMENT AS PER CITY STANDARD R10.

200mm WATERMAIN A

STATION	FINISHED GRADE	TOP W/M	ITEM
0+000	94.18	91.53*	CONNECT TO EX. 200mm WATER STUB WITH 11 1/4" BEND
0+005.1	94.21	91.810	11 1/4" HORIZONTAL BEND
0+020	94.28	91.880	TOP OF WATERMAIN
0+040.8	94.35	91.950	200mm x 200mm TEE
0+046.5	94.36	91.960	200mm VALVE AND VALVE BOX
0+061.1	94.61	92.210	11 1/4" HORIZONTAL BEND
0+070	94.43	92.030	11 1/4" HORIZONTAL BEND
0+077.2	94.56	92.160	200mm x 200mm TEE
0+083.2	94.66	92.260	200mm VALVE AND VALVE BOX
0+098.2	94.94	92.540	45° HORIZONTAL BEND
0+101.2	94.97	92.570	22 1/2" HORIZONTAL BEND
0+104.2	94.96	92.560	11 1/4" HORIZONTAL BEND
0+120	94.88	92.480	TOP OF WATERMAIN
0+140	95.03	92.630	TOP OF WATERMAIN
0+159.7	95.52	93.120	45° HORIZONTAL BEND
0+161.6	95.50	93.100	45° HORIZONTAL BEND
0+181.2	95.21	92.810	45° HORIZONTAL BEND
0+188.5	94.99	92.590	45° HORIZONTAL BEND
0+190.5	94.95	92.550	200mm x 200mm TEE
0+196.5	94.81	92.410	200mm VALVE AND VALVE BOX
0+216.3	94.69	92.290	FIRE HYDRANT TEE
0+226.3	94.67	92.270	200mm VALVE AND VALVE BOX
0+229.2	94.62	92.220	200mm x 200mm TEE
0+240	94.34	91.940	TOP OF WATERMAIN
0+244.5	94.37	91.970	200mm VALVE AND VALVE BOX
0+247.5	94.30	91.900	5° HORIZONTAL BEND
0+270.5	94.27	91.87*	CONNECT TO EX. WATERMAIN 200mm X 200mm TEE

200mm WATERMAIN B

STATION	FINISHED GRADE	TOP W/M	ITEM
0+000	94.35	91.950	200mm x 200mm TEE
0+002.3	94.28	91.880	45° VERTICAL BEND
0+003.3	94.25	91.820	45° VERTICAL BEND
0+006	94.14	91.820	45° VERTICAL BEND
0+007	94.14	91.740	45° VERTICAL BEND
0+008.3	94.14	91.740	45° HORIZONTAL BEND
0+011.1	94.16	91.760	45° HORIZONTAL BEND
0+014.1	94.19	91.790	200mm VALVE AND VALVE BOX
0+020	94.25	91.850	TOP OF WATERMAIN
0+040	94.45	92.050	TOP OF WATERMAIN
0+052.7	94.50	92.100	200mm VALVE AND VALVE BOX
0+054.9	94.50	92.100	45° VERTICAL BEND
0+055.9	94.51	93.010	45° VERTICAL BEND
0+058.7	94.56	93.010	45° VERTICAL BEND
0+059.7	94.58	92.180	45° VERTICAL BEND
0+061.7	94.62	92.280	200mm x 200mm TEE

200mm WATERMAIN C

STATION	FINISHED GRADE	TOP W/M	ITEM
0+000	94.56	92.160	200mm x 200mm TEE
0+002	94.57	92.170	45° VERTICAL BEND
0+003	94.56	93.000	45° VERTICAL BEND
0+005.8	94.55	93.000	45° VERTICAL BEND
0+006.8	94.55	92.150	45° VERTICAL BEND
0+009	94.54	92.140	200mm VALVE AND VALVE BOX
0+020	94.38	91.980	TOP OF WATERMAIN
0+040	94.47	92.070	TOP OF WATERMAIN
0+048.5	94.65	92.250	200mm VALVE AND VALVE BOX
0+051	94.74	92.340	45° VERTICAL BEND
0+052	94.78	93.200	45° VERTICAL BEND
0+054.7	94.88	93.200	45° VERTICAL BEND
0+055.7	94.92	92.520	45° VERTICAL BEND
0+057.5	94.95	92.550	200mm x 200mm TEE

ICD TABLE

STRUCTURE ID	TRIBUTARY AREA ID	ICD TYPE	2YR HEAD (m)	100YR HEAD (m)	2YR FLOW (L/s)	100YR FLOW (L/s)
CB C103A-1	C103A	127mm ORFFICE	1.41	1.58	37.30	39.60
CB C105A-1	C105A	121mm ORFFICE	1.41	1.61	33.89	36.33
CB C108B-1	C108B	152mm ORFFICE	1.31	1.62	51.10	57.14
CB C108A-1	C108A	121mm ORFFICE	0.71	1.58	23.49	35.97

SEWER AND WATERMAIN CROSSING TABLE

CROSSING	STM INV	STM OBV	SAN INV	SAN OBV	WTR TOP	WTR BTM	CB INV	CB OBV
▲	91.57(91.50)	92.02(92.09)	91.09	91.26				
▲	91.60(91.53)	92.05(92.12)			92.82	92.62		
▲	91.77(91.70)	92.22(92.29)	91.26	91.46				
▲	91.78(91.71)	92.23(92.30)	91.23	91.43	93.00	92.80		
▲	92.20	92.50	91.49	91.69	93.20	93.00		
▲	92.01	92.31	91.35	91.55	93.01	92.81		
▲	91.99	92.29	91.27	91.47				
▲			91.39	91.59			92.76	92.96

*BRACKETS DENOTE ADJUSTED VALUE WITH CONCRETE PIPE THICKNESS

BLOCK 6 SCHOOL

APPROVED
By Lily Xu at 3:35 pm, Oct 21, 2024

Lily Xu

LILY XU, MCIP, RPP
MANAGER, DEVELOPMENT REVIEW SOUTH
PLANNING, DEVELOPMENT, AND BUILDING SERVICES
DEPARTMENT, CITY OF OTTAWA

- Notes**
- FINAL SERVICE LATERAL SIZES TO BE CONFIRMED BY MECHANICAL CONSULTANT.
 - PRESSURE REDUCING VALVES (PRVs) ON ALL UNITS TO BE INSTALLED AS PER ONTARIO PLUMBING CODE
 - MAINTENANCE HOLES LOCATED IN PONDING AREAS SHALL HAVE WATER TIGHT FRAME AND COVERS AS PER CITY STANDARD S24, S24.1 AND S25. (STM MHs 102 AND 108, SAN MHs 2 AND 8)
 - HALF OF BLOCK 8 UNITS WILL BE SERVICED THROUGH SNTC LANDS SUBDIVISION EXISTING SANITARY SEWER AND WATERMAIN IN VERULAM STREET.
 - BLOCKS 1 TO 6 HAVE FULL BASEMENTS, BLOCKS 7 TO 8 HAVE A CRAWL SPACE.
 - ALL STORM AND SANITARY SERVICES TO BE EQUIPPED WITH APPROVED BACKWATER VALVES AS PER CITY STANDARD (S14, S14.1, AND S14.2).

Revision

NO.	REVISION	DATE	BY	APP'D.	
5	REVISED AS PER SITE PLAN	ZW	KS	24.10.03	
4	ISSUED FOR APPROVAL	ZW	KS	24.08.26	
3	REVISED AS PER SITE PLAN AND CITY COMMENTS	MJS	KS	24.04.26	
2	REVISED AS PER SITE PLAN	MJS	KS	24.03.19	
1	ISSUED FOR SPA	WAJ	KS	23.09.28	
			By	App'd.	YY.MM.DD

File Name: 160401845 BLC3 D8.dwg
Dwn. Chkd. Dsgn.
MJS KS MJS
Dwn. Chkd. Dsgn. YY.MM.DD

Permit-Seal

Client/Project
NEPEAN TOWN CENTRE DEVELOPMENT CORPORATION
2934 BASELINE ROAD, SUITE 302, OTTAWA, ON, K2H 1B2
PH: (613) 518-1864
SNTC LANDS
BLOCK 3
OTTAWA, ON

Title
SITE SERVICING PLAN

Project No. 160401845
Drawing No. SSP-1
Scale 1:400
Sheet 3 of 7
Revision 4