




330 LAURIER AVE. E
 PROPOSED 9 STOREY RESIDENTIAL BUILDING C/W
 2 LEVELS OF UNDERGROUND PARKING
 111 CONDOMINIUM SUITES

BLACKBURN AVE.


 Rb-51 (OTM)
 NO PARKING
 300mmx300mm

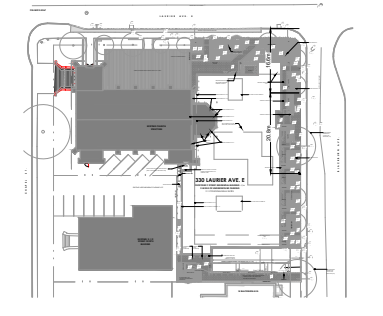

 Rb-53 (OTM)
 PARKING RESTRICTED
 (15min DURATION)
 300mmx450mm


 Rb-53 (OTM)
 PARKING RESTRICTED
 (15 MINUTE DURATION)
 300mmx450mm


 Rb-53(B) (OTM)
 PARKING RESTRICTED
 (1 HOUR DURATION
 8AM-6PM MON-FRI)
 300mmx450mm
 WITH "PERMIT
 HOLDERS
 EXEMPTED" TAB
 (BILINGUAL)
 300mmx450mm

Notes:

Key Plan:



03	Issued for Review:	AN	2024-08-09
REV:	DESCRIPTION:	BY:	DATE:
STATUS:			



CGH Transportation
 6 Plaza Court
 Ottawa, ON
 K2H 7W1
 (343) 999-9117

CLIENT: Windmill Developments

ARCHITECT:

SITE:
 315 Chapel Street

TITLE:
 Signage Plan

SCALE AT A3: NTS	DATE: 2024-08-09	DRAWN: AN	CHECKED: JK
PROJECT NO: 2023-022	DRAWING NO: 001	REVISION: 03	