



# EVERGREEN

## 330 LAURIER ANENUE EAST

CLIENT: ALL SAINTS DEVELOPMENT LP.

2024/09/23

Project Number: 160401789



**LOCATION PLAN**

### LIST OF DRAWINGS

**LANDSCAPE DRAWINGS:**

- L100 LANDSCAPE PLAN
- L101 PLANTING PLAN
  
- L200 GREEN ROOF LANDSCAPE PLAN
  
- L600 LANDSCAPE DETAILS & NOTES - I
- L601 LANDSCAPE DETAILS & NOTES - II
- L602 LANDSCAPE DETAILS & NOTES - III



Copyright Reserved

The Contractor shall verify and be responsible for all dimensions. DO NOT scale the drawing - any errors or omissions shall be reported to Stantec without delay.  
The Copyrights to all designs and drawings are the property of Stantec. Reproduction or use for any purpose other than that authorized by Stantec is forbidden.

Legend

- EXISTING TREE
- PROPOSED LARGE DECIDUOUS TREE
- PROPOSED MEDIUM DECIDUOUS TREE
- PROPOSED COLUMNAR DECIDUOUS TREE
- PROPOSED PLANTING BED
- PROPOSED SOD
- PROPOSED SIDEWALK WITH SOIL CELLS
- PROPOSED BENCH
- PROPOSED STONE RETAINING WALL MAX. 900mm ht.
- PROPOSED LOW LANDSCAPE STONE WALL MAX. 500mm ht.
- PROPOSED PRIVACY SCREEN
- ARCHITECTURAL FENCE
- PROPOSED VENTILATION GRATE
- PROPOSED RIVERWASHED STONES
- PROPOSED CONCRETE RETAINING WALL
- PROPOSED CONCRETE CURB
- PROPOSED 1.5m WIDE WALKWAY
- PROPOSED PAVERS TYPE 1
- PROPOSED BIKE RACK
- 150mm X150mm AREA DRAIN
- PROPOSED WALL-MOUNTED LIGHT
- PROPERTY LINE

Notes

5	ISSUED FOR CITY REVIEW	TA	KP	24.05.24
4	ISSUED FOR CITY REVIEW	CA	KP	24.01.31
3	RE-ISSUED FOR ZBLA	CA	KP	23.11.14
2	ISSUED FOR ZBLA	CA	KP	23.08.18
6	ISSUED FOR CITY REVIEW	TA	KP	24.09.23

Revision		By	Appd.	YY.MM.DD
File Name:	160410406	CA	KP	KP
		Dwn.	Chkd.	Dgn.
				YY.MM.DD

Permit-Seal



Client/Project  
ALL SAINTS DEVELOPMENT LP

WINDMILL  
330 LAURIER ANENUE EAST  
OTTAWA, ON

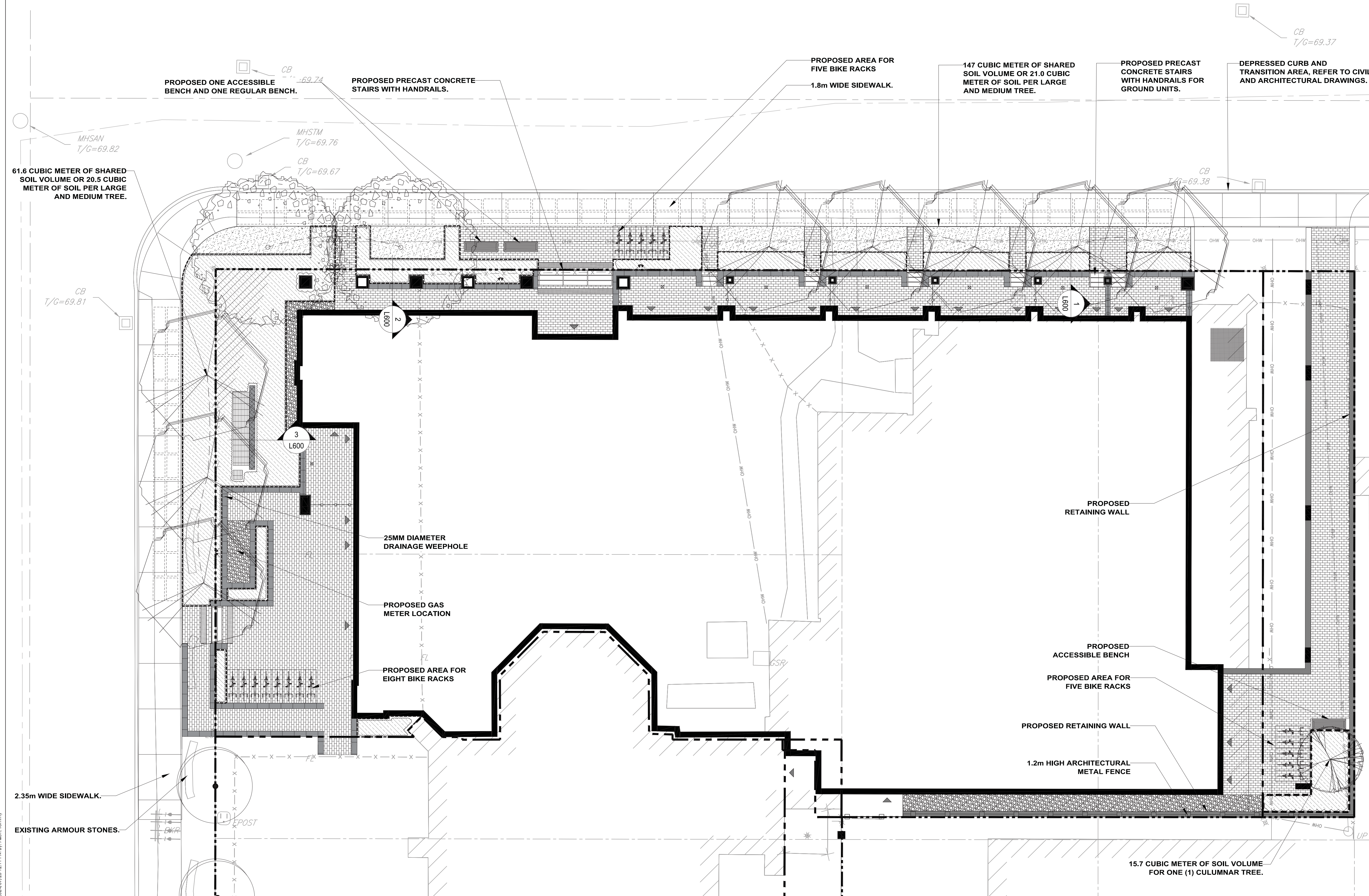
Title  
LANDSCAPE PLAN

Project No.	Scale	0 1 2 3 5m
160401789	1:100	
Drawing No.	Sheet	Revision
L100	1 of 6	6

SOIL VOLUME CALCULATION SCHEDULE			
TREE TYPE/SIZE	SINGLE TREE VOLUME REQUIRED (m3)	MULTIPLE TREE VOLUME REQUIRED (m3/TREE)	ACTUAL TREE SOIL VOLUME (m3/TREE)
BLACKBURN AVE 7x (LARGE/MEDIUM)	-	18	21.0
LAURIER AVE 3x (LARGE/MEDIUM)	-	18	20.5
COLUMNAR 1x	15	-	15.7

GENERAL LANDSCAPE NOTES

- REFER TO TREE CONSERVATION REPORT FOR INFORMATION RELATED TO TREE REMOVAL / TREE PROTECTION DIRECTIONS. EXISTING VEGETATED AREAS ON ADJACENT PROPERTIES SHALL REMAIN AND BE PROTECTED BEFORE, DURING, AND AFTER CONSTRUCTION.
- REFER TO ENGINEERING DRAWINGS FOR PROPOSED GRADING, AND SITE SERVICING.
- EXISTING VEGETATED AREAS ON ADJACENT PROPERTIES SHALL REMAIN AND BE PROTECTED BEFORE, DURING, AND AFTER CONSTRUCTION.
- SOD SHALL BE KENTUCKY BLUEGRASS SOD INSTALLED OVER 135MM OF TOPSOIL. SOD SHALL BE INSTALLED WHERE INDICATED ON THE LANDSCAPE PLANS AND IN ALL DISTURBED AREAS. INSTALL SOD AS PER OPSS 803.
- CONTRACTOR TO LOCATE AND STAKE ALL UTILITIES PRIOR TO ANY WORK ON THE SITE AND TO OBTAIN CLEARANCE FROM ALL APPLICABLE UTILITIES. DO NOT PLANT DIRECTLY ABOVE UNDERGROUND UTILITIES. REPORT CONFLICTS AND ANY DISCREPANCIES TO THE LANDSCAPE ARCHITECT FOR DIRECTION.
- NO TREES SHALL BE PLANTED ON PROPERTY / LOT LINES OR WITHIN DRAINAGE EASEMENTS.
- NO TREES SHALL BE PLANTED UNDER OVERHEAD WIRES.
- FOR TREES, MAINTAIN A MINIMUM DISTANCE OF 1500mm FROM ALL UNDERGROUND UTILITIES.
- FOR TREES, MAINTAIN A MINIMUM DISTANCE OF 4500mm FROM ALL BUILDINGS.
- FOR TREES, MAINTAIN A MINIMUM DISTANCE OF 4000mm FROM ALL HYDRO TRANSFORMERS.
- FOR TREES, MAINTAIN A MINIMUM OF 1000mm FROM SIDEWALKS, PATHWAYS, AND DRIVEWAYS.
- THE LANDSCAPE ARCHITECT MAY ADJUST THE LOCATION OF PLANTING PRIOR TO PLANTING TO MINIMIZE CONFLICTS WITH UTILITIES, DRIVEWAYS AND INTERSECTION VISIBILITY.
- CONTRACTOR SHALL SUPPLY ALL MATERIALS IN QUANTITIES SUFFICIENT TO COMPLETE WORK SHOWN ON THESE DRAWINGS. ANY DISCREPANCIES SHALL BE REPORTED TO THE LANDSCAPE ARCHITECT FOR DIRECTION.
- DO NOT MAKE SUBSTITUTIONS OF MATERIALS, PRODUCTS OR QUANTITIES WITHOUT PRIOR WRITTEN PERMISSION OF THE LANDSCAPE ARCHITECT.
- PLANT MATERIAL QUALITY STANDARDS:
- ALL PLANT MATERIAL TO CONFORM TO THE CANADIAN NURSERY TRADES ASSOCIATION AND THE CANADIAN STANDARDS FOR NURSERY STOCK AS TO SPECIES, SIZE AND CONDITION.
- PLANT MATERIAL COLLECTED FROM WILD SOURCES ARE NOT ACCEPTABLE.
- THE LANDSCAPE ARCHITECT RESERVES THE RIGHT TO REFUSE ACCEPTANCE OF ANY PLANT DISPLAYING POOR GROWTH HABITS APPROPRIATE TO SPECIES, DISEASE OR DAMAGE FROM POOR HANDLING DURING TRANSPORT, ON SITE STORAGE, INSTALLATION OR MAINTENANCE.
- ANY PLANTS THAT DO NOT CONFORM TO THESE STANDARDS WILL BE PROMPTLY REMOVED FROM THE SITE BY THE CONTRACTOR AND REPLACED WITH MATERIAL OF ACCEPTABLE QUALITY AT NO ADDITIONAL COST TO THE PROJECT.
- THE CONTRACTOR TO MAKE GOOD TO THE SATISFACTION OF THE LANDSCAPE ARCHITECT ANY AREAS DAMAGED BY THE WORK.
- PRUNING - TO SUIT SPECIES - PRUNE BRANCHES BY 1/3 TO REMOVE DAMAGED OR OBJECTIONABLE BRANCHES FOLLOWING PROPER HORTICULTURAL PRACTICE. DO NOT PRUNE LEADERS.
- UPON THE COMPLETION OF WORK EACH DAY, REMOVE ALL DEBRIS, GARBAGE AND SURPLUS MATERIALS FROM THE SITE. KEEP THE SITE CLEAN AND USEABLE AT ALL TIMES.
- ALL WORKMANSHIP AND MATERIALS (INCLUDING PLANTS) TO BE GUARANTEED FOR ONE FULL YEAR FOLLOWING FINAL ACCEPTANCE OF THE PROJECT BY THE LANDSCAPE ARCHITECT.
- THE CONTRACTOR SHALL REMOVE ALL TREE STAKES AND TREE SUPPORTS PRIOR TO ASSUMPTION BY THE OWNER.
- AT THE TIME OF INSPECTION FOR ACCEPTANCE ALL TREE PITS SHALL BE CULTIVATED, FREE OR WEEDS, LEAVES, BROKEN BRANCHES AND DEBRIS.



W:\active\16041789\plan\landscaping\160401789\_LB.dwg  
 2024/09/23 12:11 PM By: Allen, Tommy  
 ORIGINAL SHEET - ARCH-D



**PLANTING SCHEDULE - L101**

QUANTITIES	KEY	BOTANICAL NAME	COMMON NAME	SIZE AT PLANTING	REMARKS
<b>DECIDUOUS TREES - REFER TO DETAIL 1/L602</b>					
8	AR	<i>Acer rubrum</i> 'Bowhall'	Bowhall Red Maple	60mm (cal.)	W.B.
2	AS	<i>Acer saccharum</i> 'Legacy'	Legacy Sugar Maple	60mm (cal.)	W.B.
1	ASC	<i>Acer saccharum</i> 'Columnare'	Columnar Sugar Maple	60mm (cal.)	W.B.
<b>DECIDUOUS SHRUBS - REFER TO DETAIL 3/L602 &amp; 4/L602</b>					
3	DL	<i>Dierilla lonicera</i>	Bush Honeysuckle	500mm (ht.)	Potted; Plant at 1000mm o.c.
111	HK	<i>Hypericum kalmianum</i>	Pot O'Gold	2 Gallon	Potted; Plant at 500mm o.c.
11	HP	<i>Hypericum prolificum</i>	Shrubby St. John's Wort	400mm (ht.)	Potted; Plant at 800mm o.c.
8	PFF	<i>Potentilla fruticosa</i> 'Farreri'	Golddrop cinquefoil	2 Gallon	Potted; Plant at 500mm o.c.
3	POC	<i>Physocarpus opulifolius</i> 'Center Glow'	Center Glow Ninebark	500mm (ht.)	Potted; Plant at 1750mm o.c.
12	RAG	<i>Rhus aromatica</i> 'Gro-Low'	Gro-Low Fragrant Sumac	500mm (ht.)	Potted; Plant at 750mm o.c.
6	SA	<i>Symphoricarpos albus</i>	Snowberry	3 Gallon	Potted; Plant at 1000mm o.c.

**PLANTING SCHEDULE - L101**

QUANTITIES	KEY	BOTANICAL NAME	COMMON NAME	SIZE AT PLANTING	REMARKS
<b>PERENNIALS &amp; ORNAMENTAL GRASSES - REFER TO DETAIL 5/L602 &amp; 6/L602</b>					
40	DCB	<i>Deschampsia cespitosa</i> 'Bronze Veil'	Bronze Tufted Hair Grass	1 Gallon	Potted; Plant at 500mm o.c.
86	DCN	<i>Deschampsia cespitosa</i> 'Northern Lights'	Variegated Tufted Hair Grass	1 Gallon	Potted; Plant at 400mm o.c.
3	EMG	<i>Eupatorium maculatum</i> 'Gateway'	Joe Pye Weed	1 Gallon	Potted; Plant at 1000mm o.c.
42	EPA	<i>Echinacea pallida</i>	Pale Purple Coneflower	1 Gallon	Potted; Plant at 500mm o.c.
42	EPP	<i>Echinacea purpurea</i> 'Prairie Splendor'	Prairie Splendor Coneflower	1 Gallon	Potted; Plant at 400mm o.c.
164	GMA	<i>Geranium maculatum</i>	Wild Geranium	1 Gallon	Potted; Plant at 250mm o.c.
44	NFC	<i>Nepeta faassenii</i> 'Cat's Meow'	Catmint	1 Gallon	Potted; Plant at 500mm o.c.
80	RHA	<i>Rudbeckia hirta</i> 'Autumn Colours'	Autumn Colours Gloriosa Daisy	1 Gallon	Potted; Plant at 300mm o.c.
102	RHI	<i>Rudbeckia hirta</i>	Gloriosa Daisy	1 Gallon	Potted; Plant at 300mm o.c.

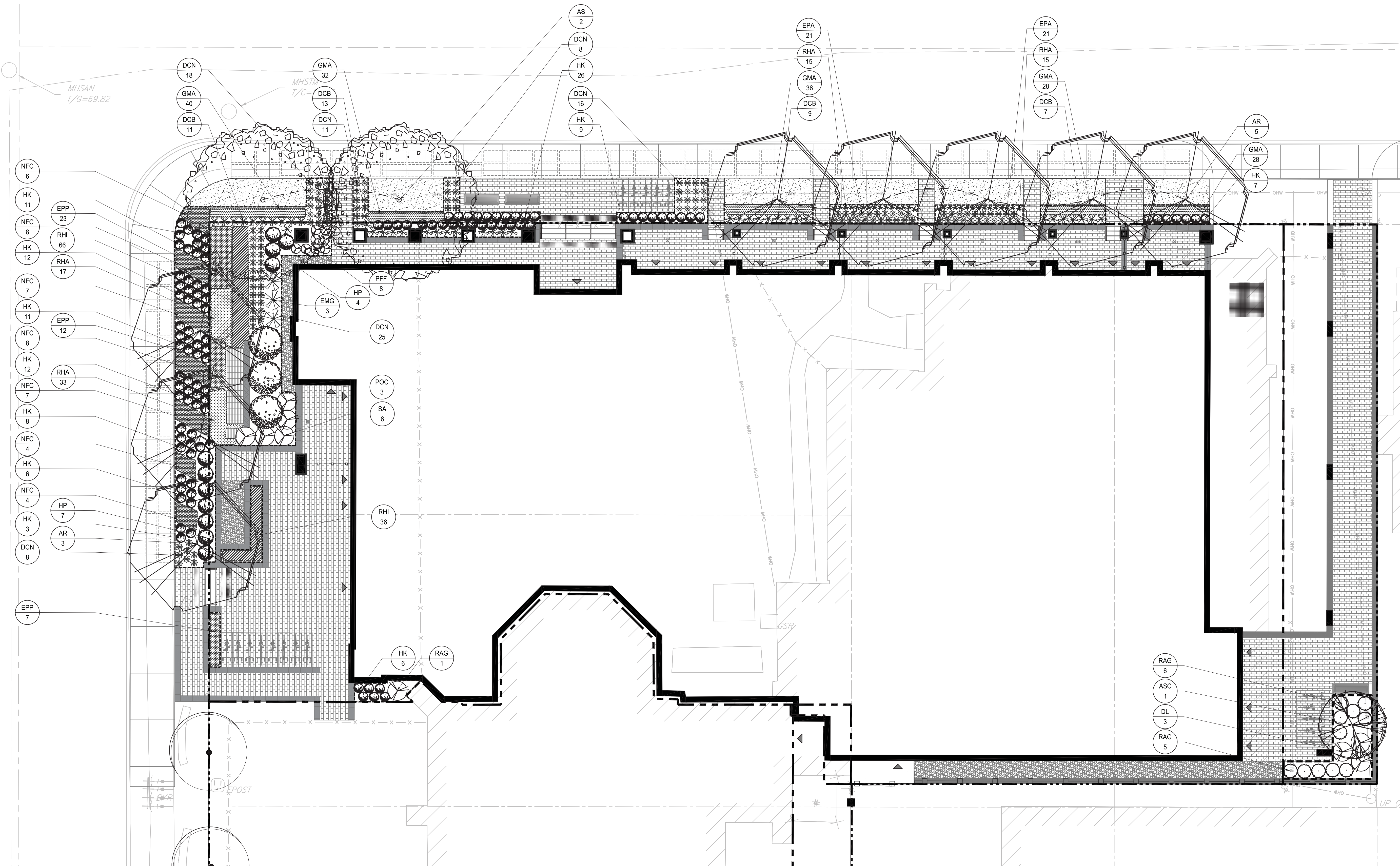


Stantec Consulting Ltd.  
300 - 1331 Clyde Avenue  
Ottawa ON  
Tel. 613.722.4420  
www.stantec.com

Copyright Reserved  
The Contractor shall verify and be responsible for all dimensions. DO NOT scale the drawing - any errors or omissions shall be reported to Stantec without delay. The Copyrights to all designs and drawings are the property of Stantec. Reproduction or use for any purpose other than that authorized by Stantec is forbidden.

**Legend**

- EXISTING TREE
- PROPOSED DECIDUOUS TREE
- PROPOSED DECIDUOUS SHRUBS
- PROPOSED CONIFEROUS & BROADLEAF SHRUBS
- PROPOSED PERENNIALS & ORNAMENTAL GRASSES
- PROPOSED PLANTING BED
- PROPOSED SOD
- PROPOSED SIDEWALK WITH SOIL CELLS
- PROPERTY LINE



**Notes**

Revision	By	Appd.	YY.MM.DD
5	TA	KP	24.05.24
4	CA	KP	24.01.31
3	CA	KP	23.11.14
2	CA	KP	23.08.18
6	TA	KP	24.09.23

File Name: 160410406  
Dwn. Chkd. Dsgn. YY.MM.DD

**Permit-Seal**



Client/Project  
ALL SAINTS DEVELOPMENT LP

WINDMILL  
330 LAURIER ANENUE EAST  
OTTAWA, ON

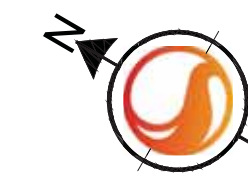
Title  
PLANTING PLAN

Project No. 160401789	Scale 1:100	Sheet 2 of 6	Revision 6
--------------------------	----------------	-----------------	---------------



**PLANTING SCHEDULE - L200**

QUANTITIES KEY	BOTANICAL NAME	COMMON NAME	SIZE AT PLANTING	REMARKS
<b>ORNAMENTAL GRASSES - REFER TO DETAIL 6/L602</b>				
10	PVC <i>Panicum virgatum</i> "Cheyenne Sky"	Cheyenne Sky Switchgrass	1 Gallon	Potted; Plant at 500mm o.c.
<b>GREENROOF PERENNIALS - REFER TO DETAIL 2/L602</b>				
78.5 Sqm	M1 <i>Sedum spp.</i>	Stonecrop	Plug	80% Red color sedum
120.2 Sqm	M2 <i>Sedum spp.</i>	Stonecrop	Plug	70% purple color sedum
35.5 Sqm	M3 <i>Sedum spp.</i>	Stonecrop	Plug	80% yellow color sedum
115 Sqm	M4 <i>Sedum spp.</i>	Stonecrop	Plug	80% green color sedum

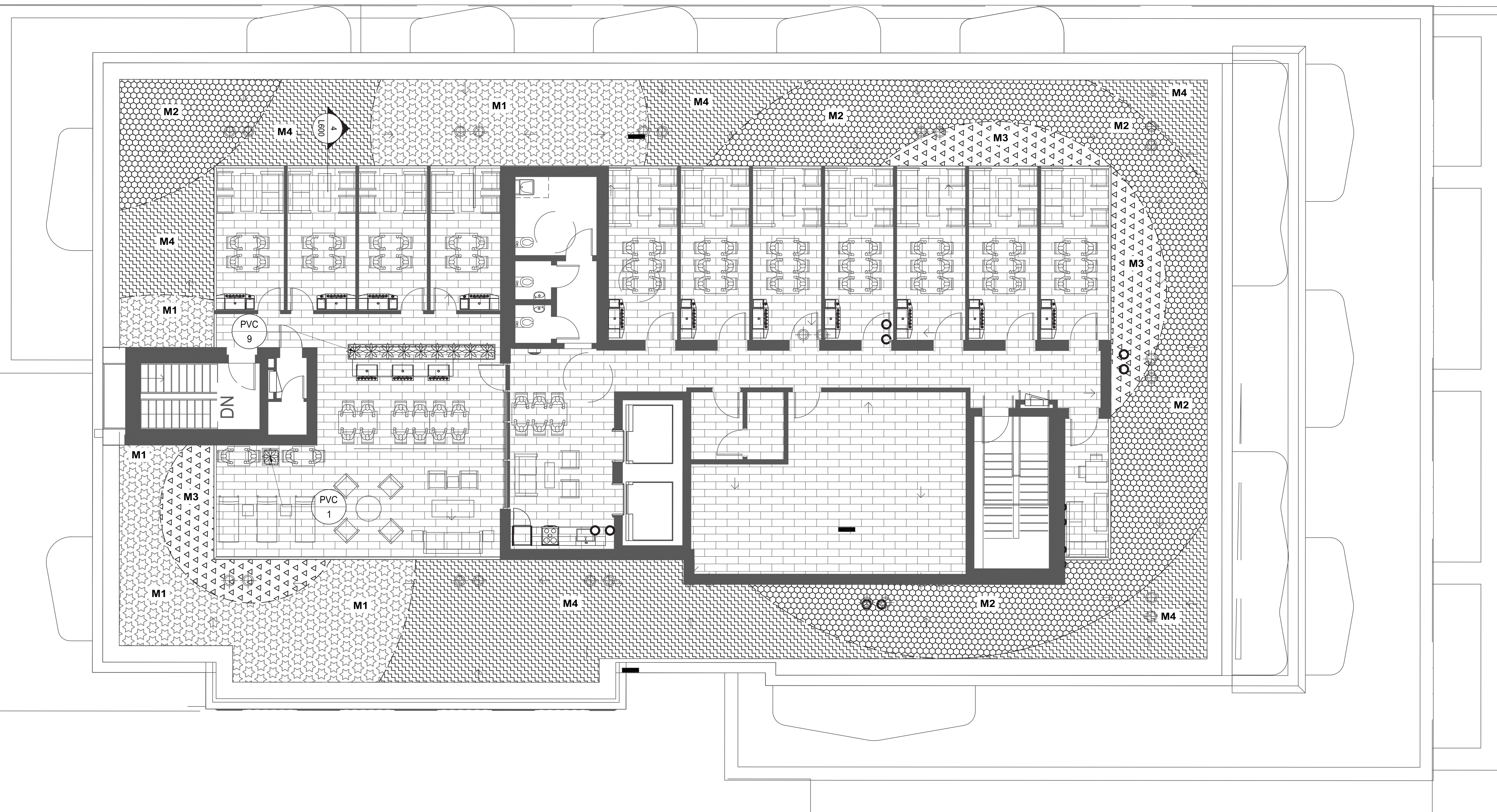


Stantec Consulting Ltd.  
 300 - 1331 Clyde Avenue  
 Ottawa ON  
 Tel. 613.722.4420  
 www.stantec.com

**Copyright Reserved**  
 The Contractor shall verify and be responsible for all dimensions. DO NOT scale the drawing - any errors or omissions shall be reported to Stantec without delay.  
 The Copyrights to all designs and drawings are the property of Stantec. Reproduction or use for any purpose other than that authorized by Stantec is forbidden.

**Legend**

- PROPOSED PLANT MIX 1
- PROPOSED PLANT MIX 2
- PROPOSED PLANT MIX 3
- PROPOSED PLANT MIX 4
- PROPOSED ORNAMENTAL GRASSES
- PROPOSED PAVERS TYPE 2



**Notes**

5	ISSUED FOR CITY REVIEW	TA	KP	24.05.24
4	ISSUED FOR CITY REVIEW	CA	KP	24.01.31
3	RE-ISSUED FOR ZBLA	CA	KP	23.11.14
2	ISSUED FOR ZBLA	CA	KP	23.08.18
6	ISSUED FOR CITY REVIEW	TA	KP	24.09.23
<b>Revision</b>		By	Appd.	YY.MM.DD
File Name:	160410406	CA	KP	KP
		Dwn.	Chkd.	Dsgn.
				YY.MM.DD

**Permit-Seal**



Client/Project  
 ALL SAINTS DEVELOPMENT LP

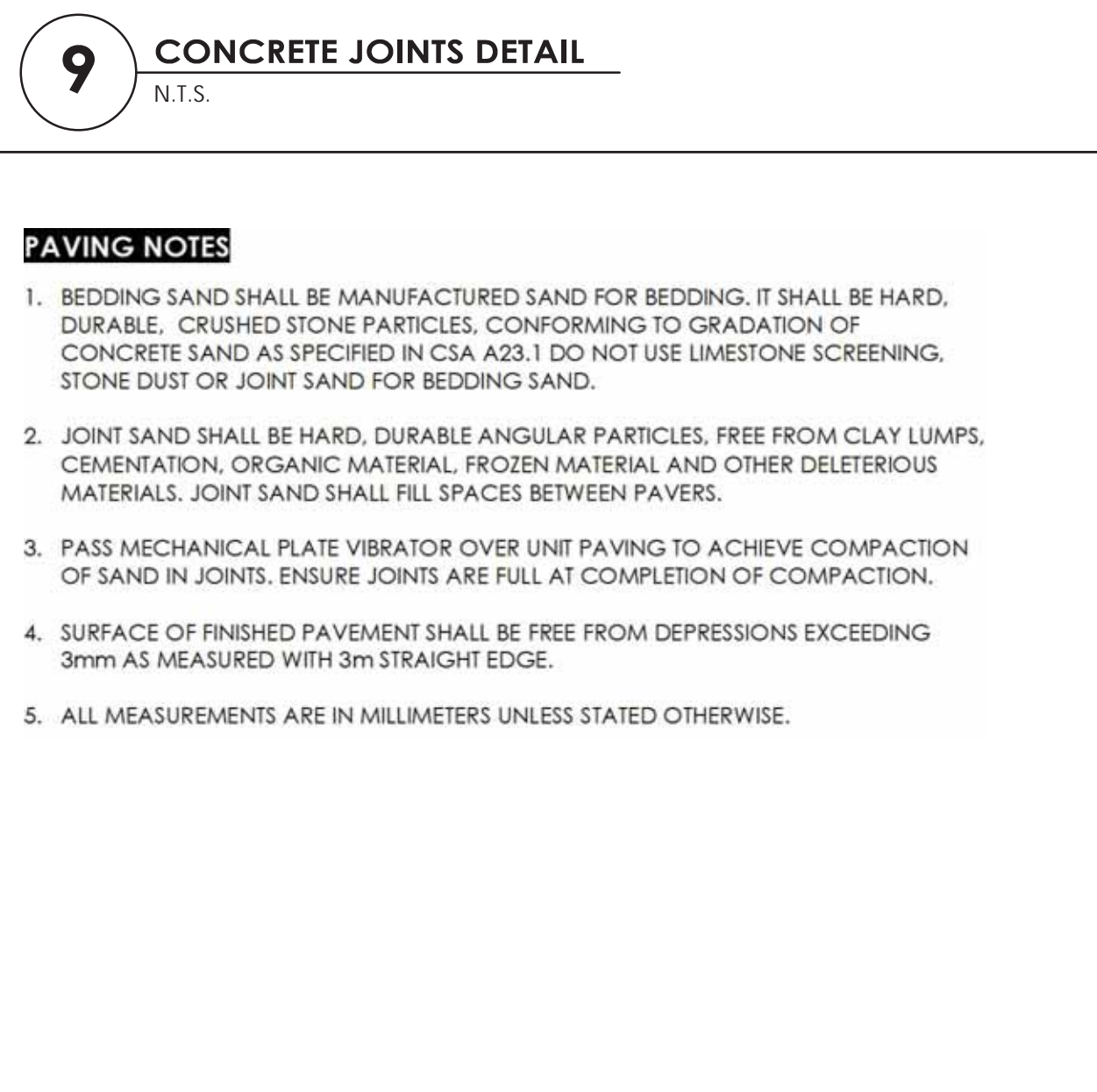
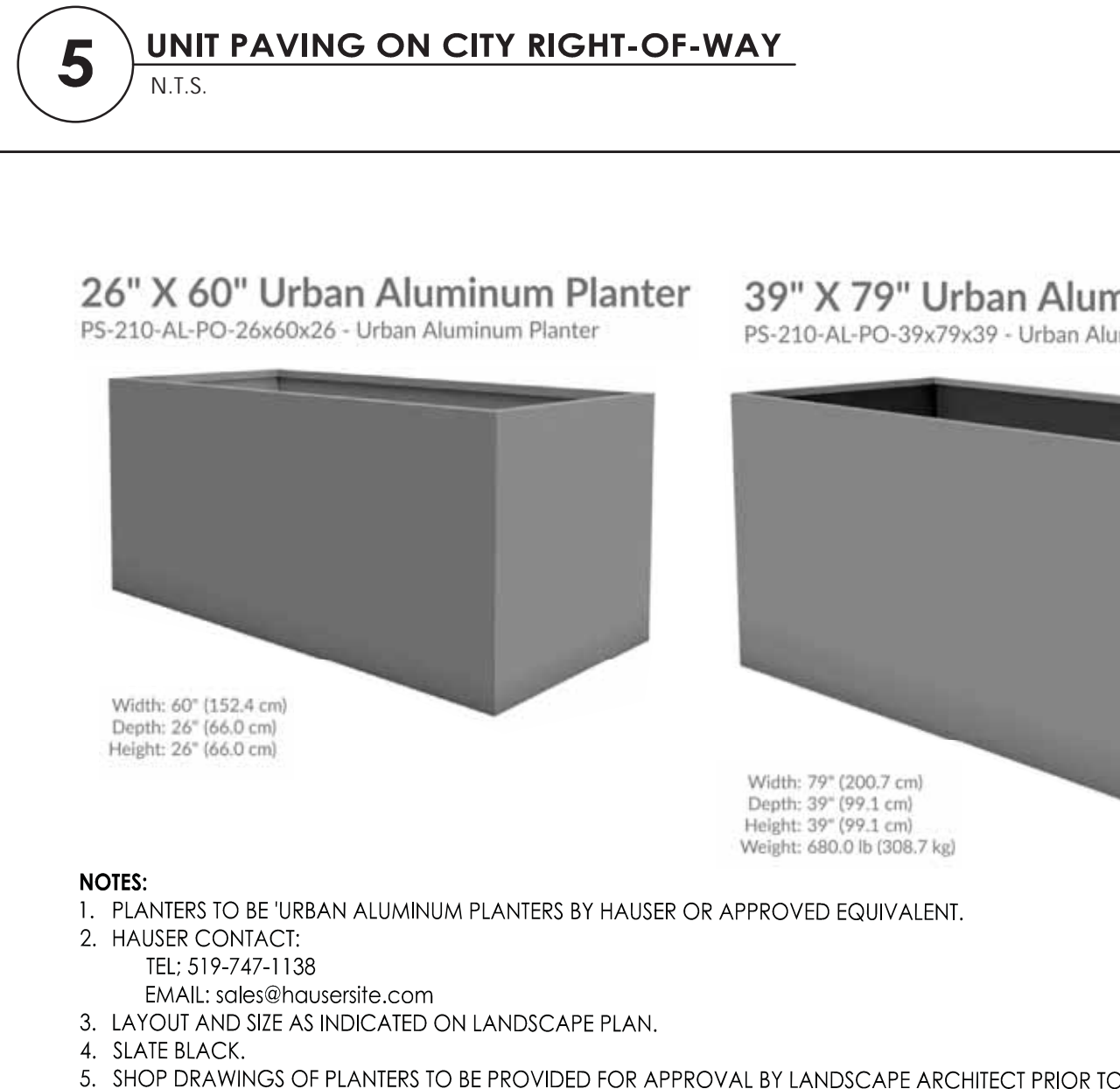
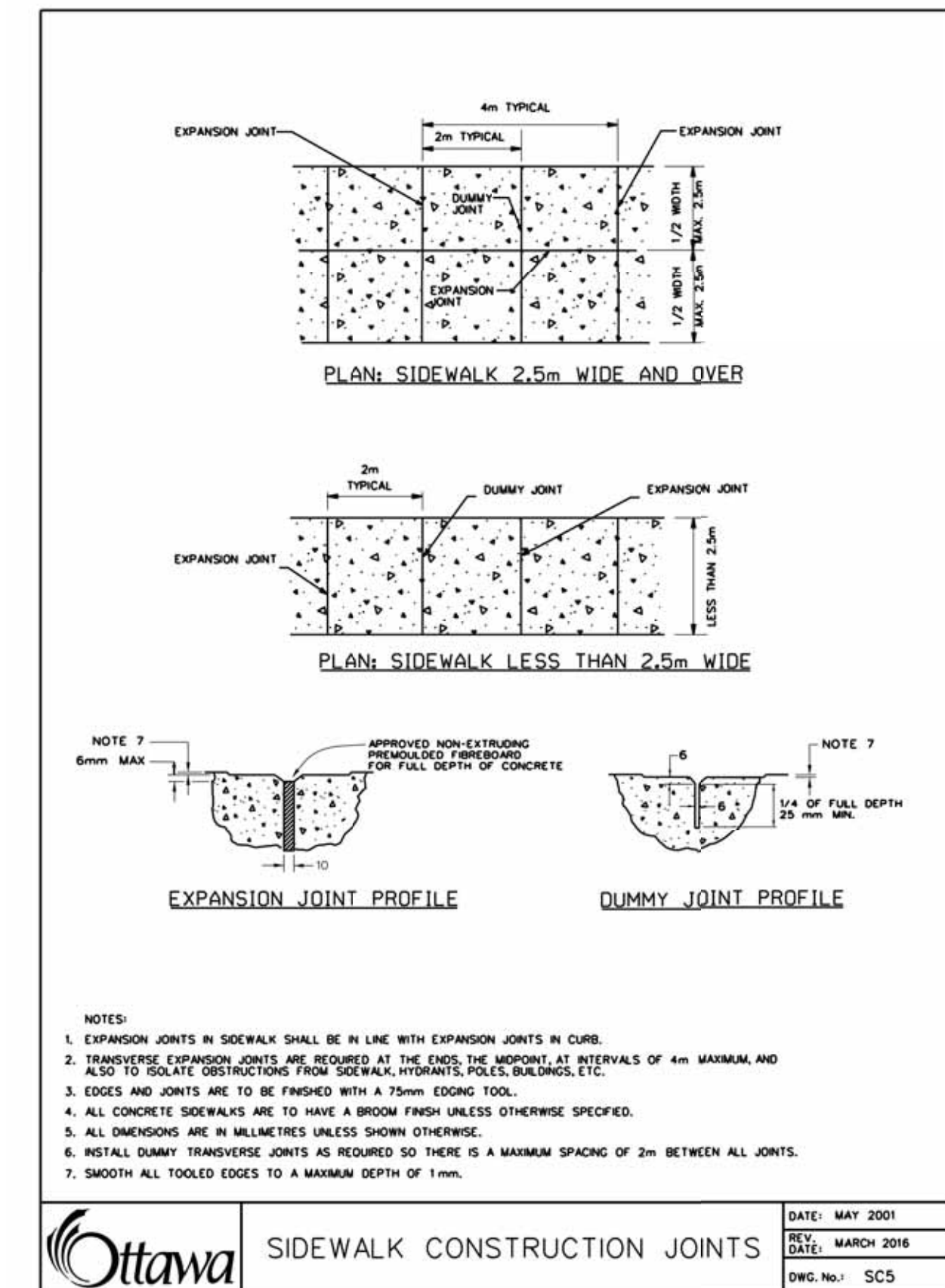
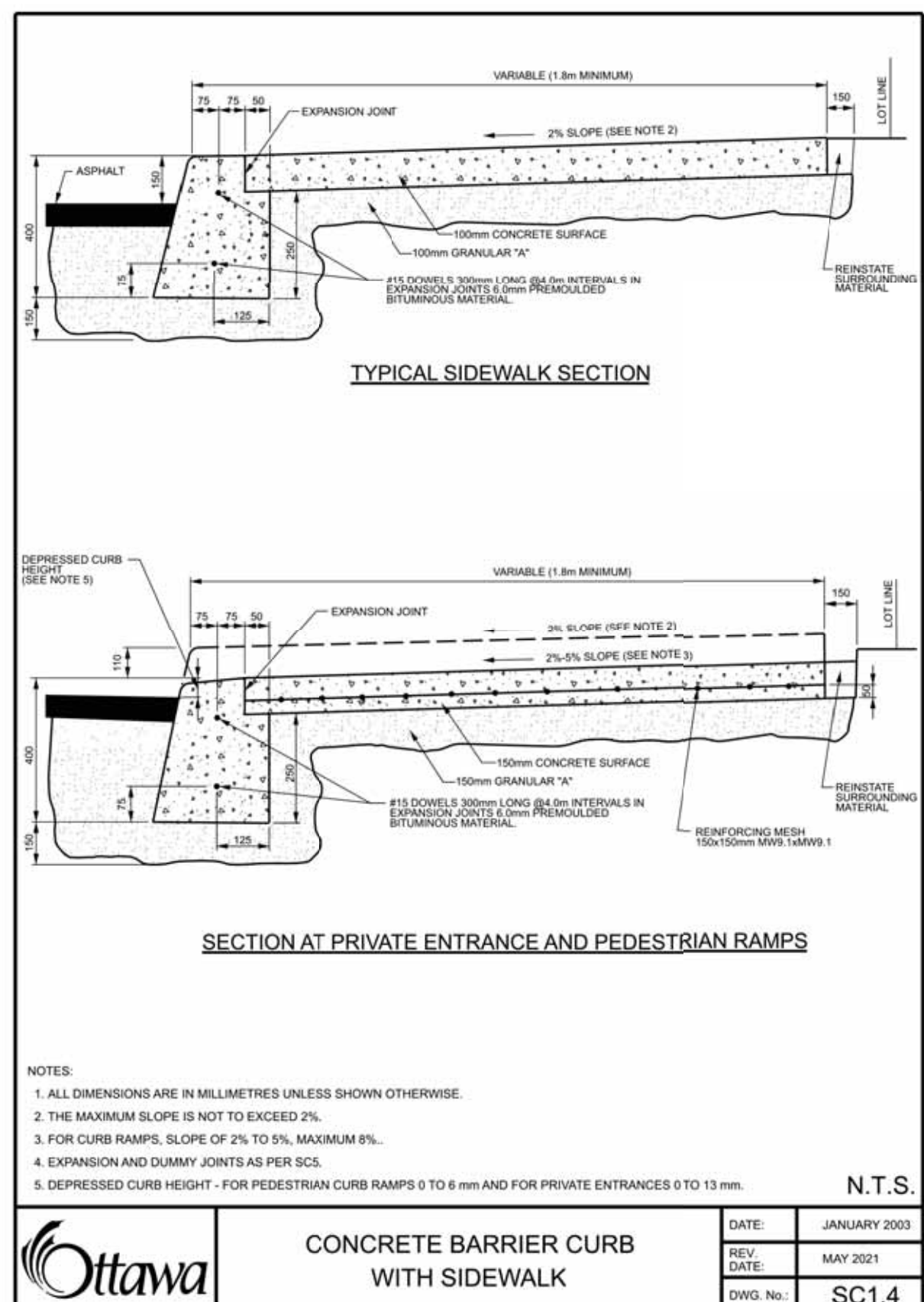
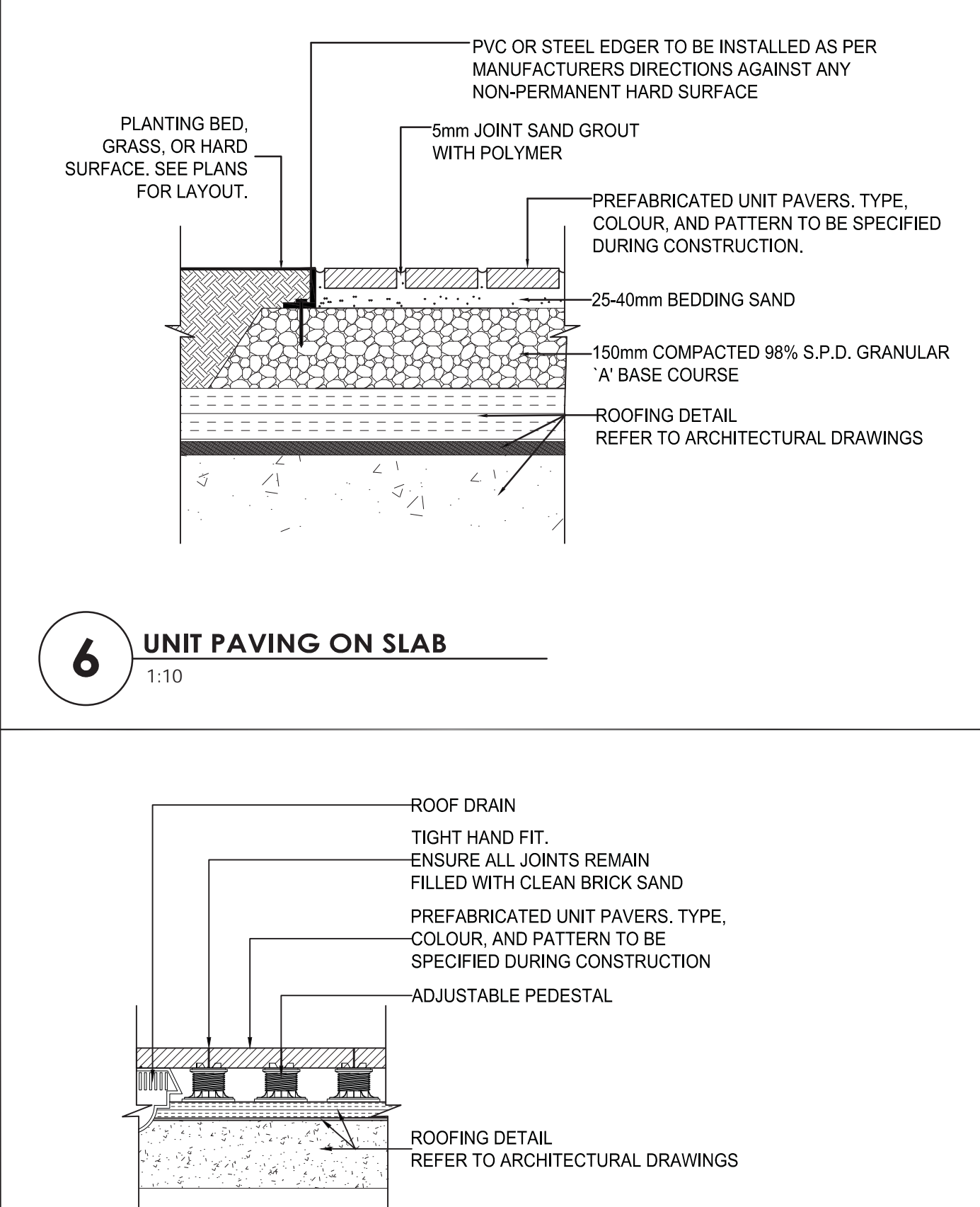
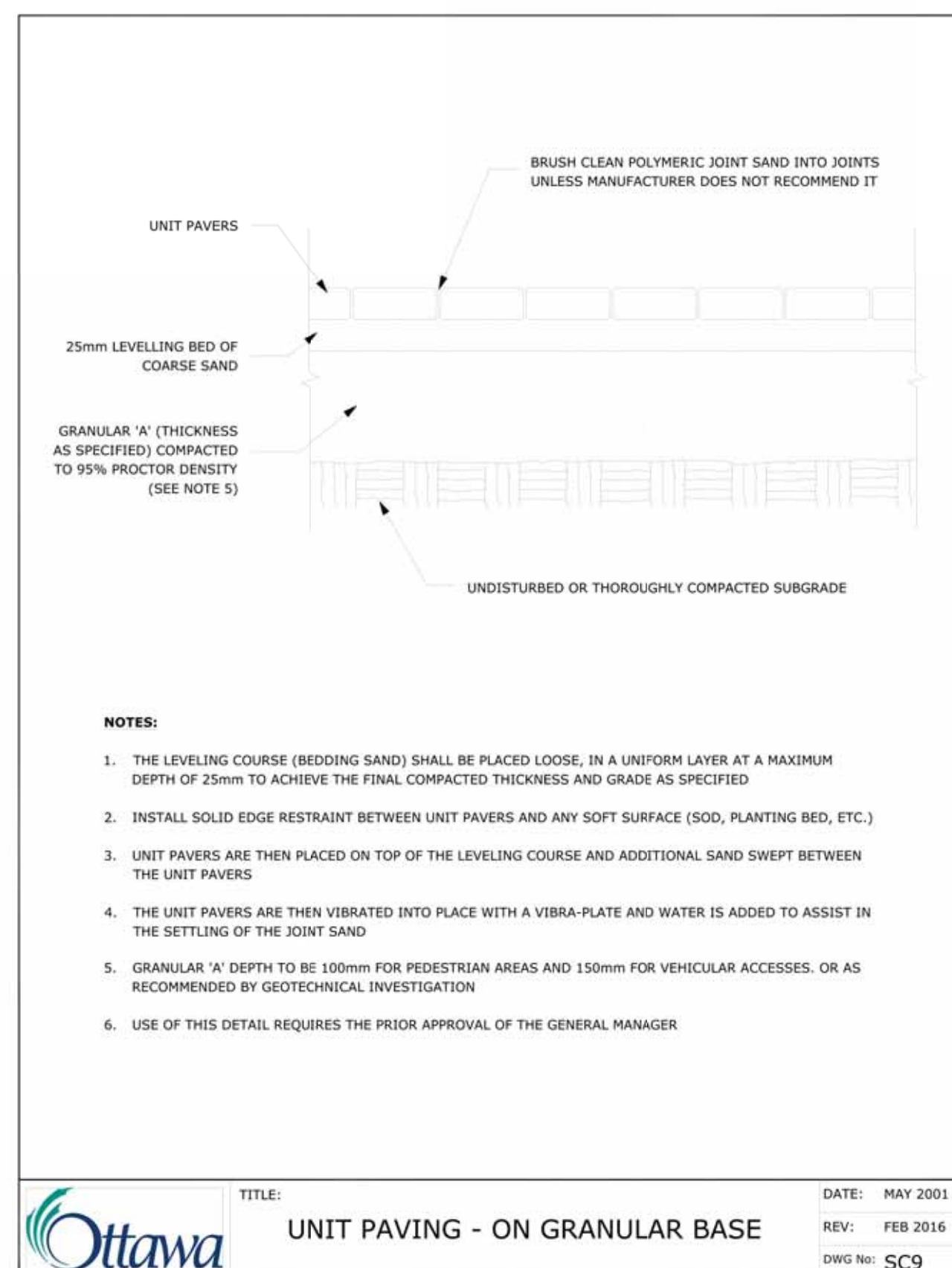
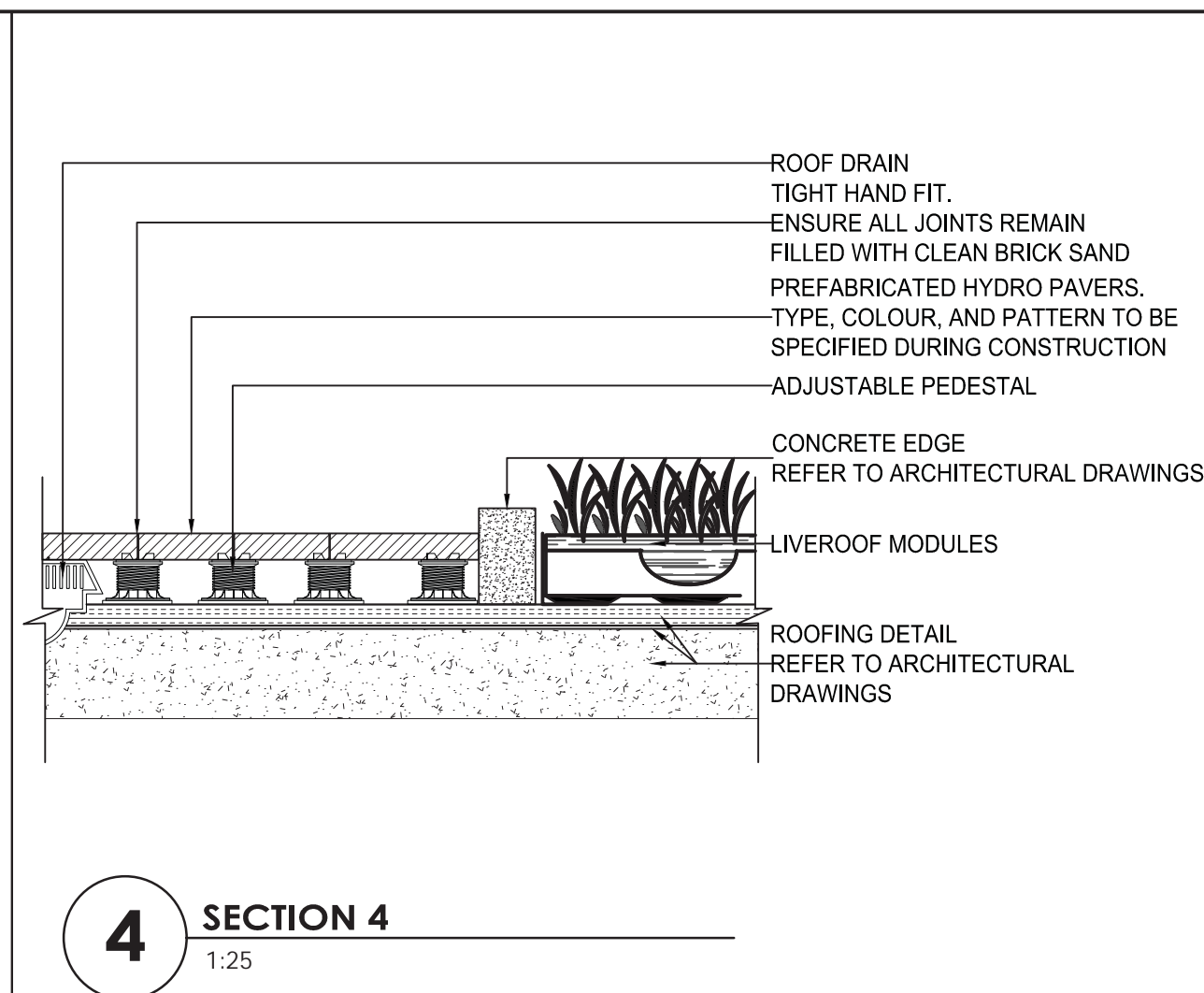
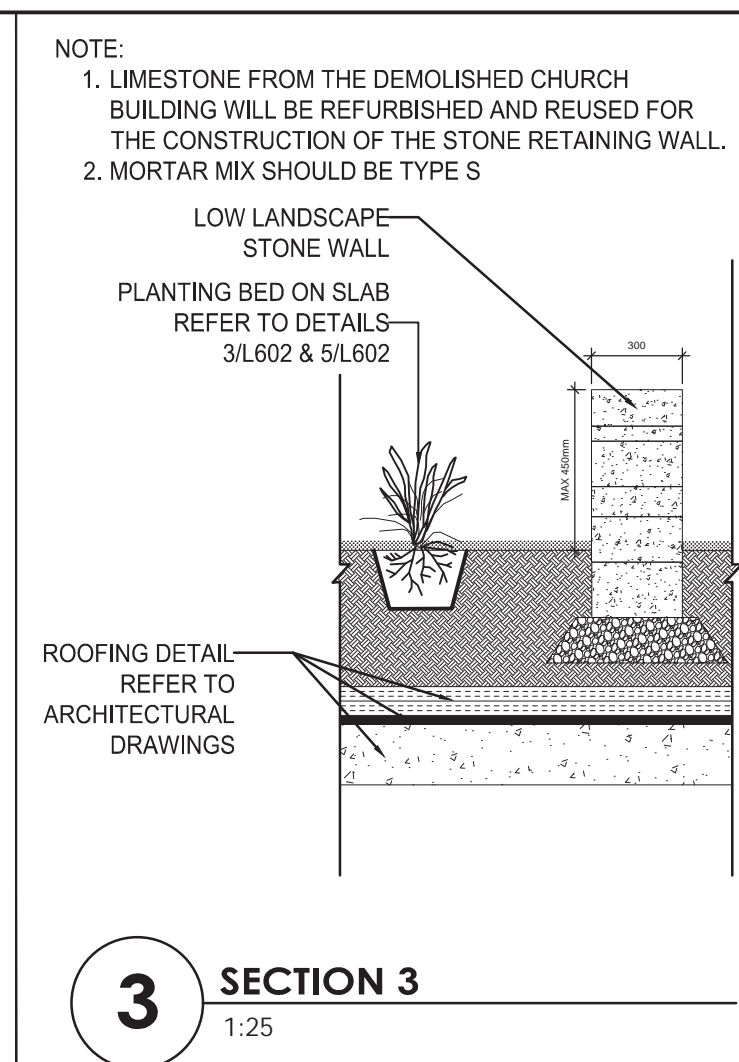
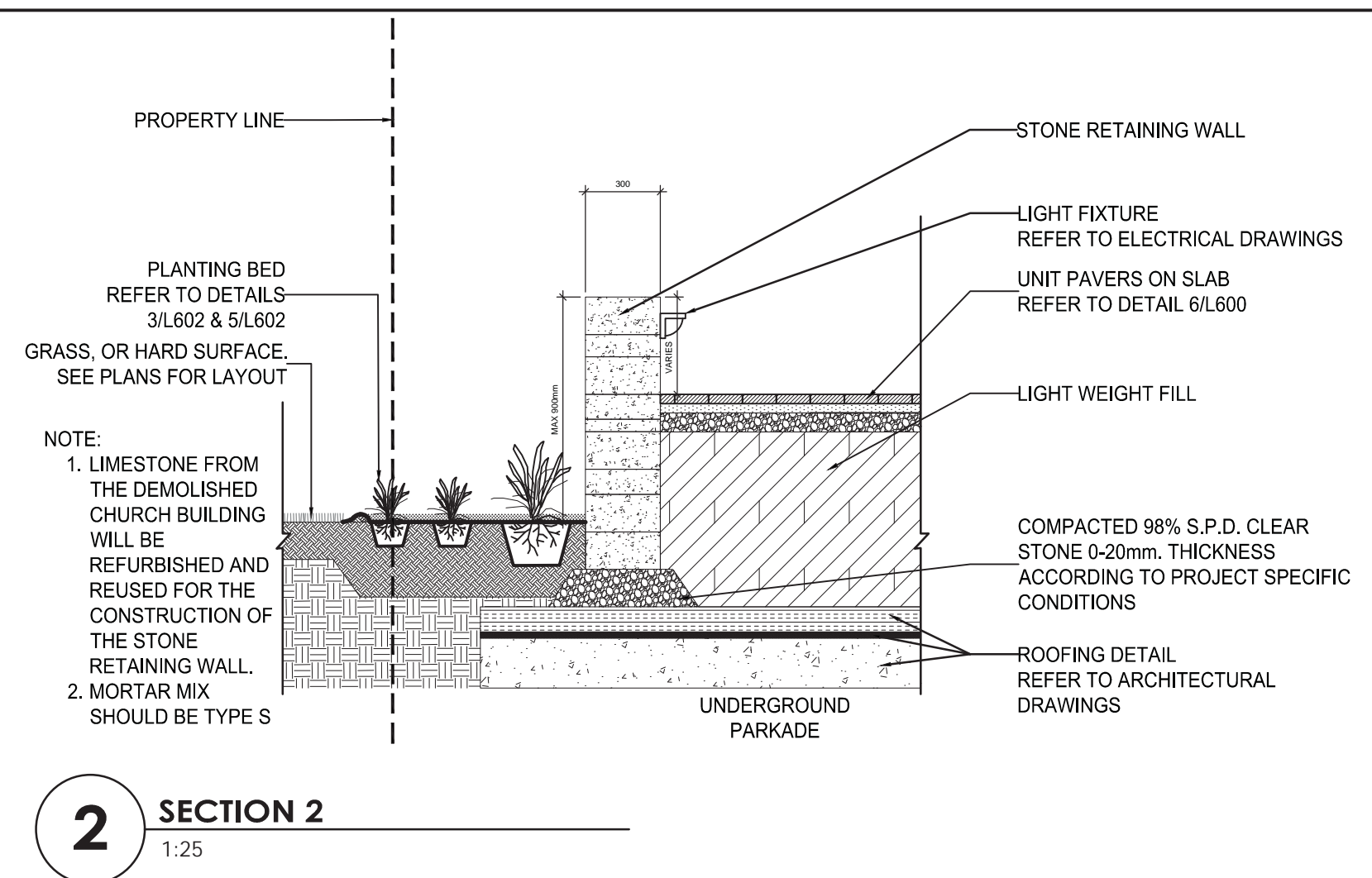
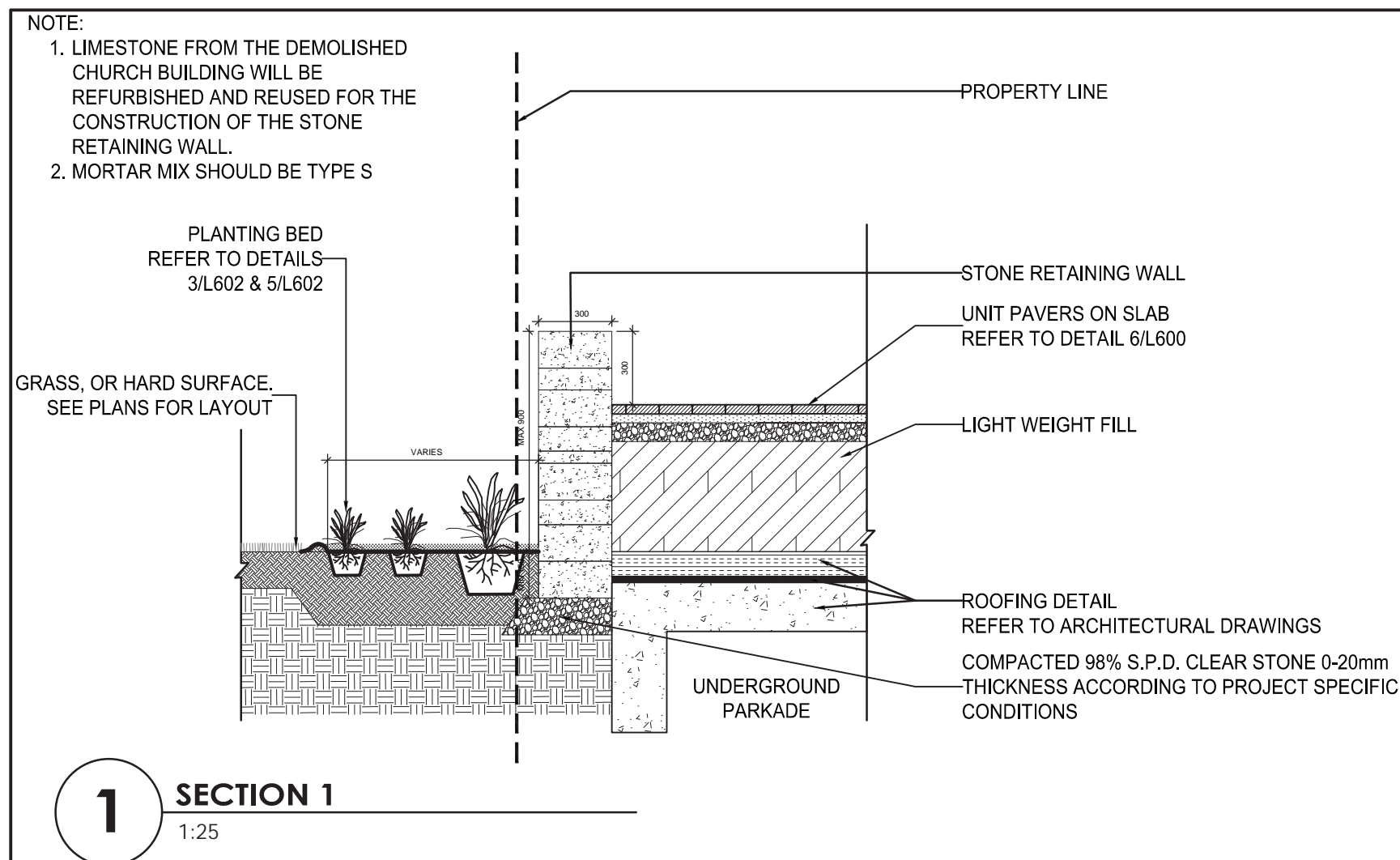
WINDMILL  
 330 LAURIER ANENUE EAST  
 OTTAWA, ON

Title  
 GREEN ROOF  
 LANDSCAPE PLAN

Project No. 160401789  
 Scale 1:75  
 Sheet 3 of 6  
 Revision 6

L200 3 of 6 6





4	ISSUED FOR CITY REVIEW	TA	KP	24.09.23
3	ISSUED FOR CITY REVIEW	TA	KP	24.05.24
2	ISSUED FOR CITY REVIEW	CA	KP	24.01.31
1	ISSUED FOR 66% SUBMISSION	CA	KP	23.01.15
Revision		By	Appd.	YY.MM.DD
File Name:	160410406	CA	KP	23.04.25
		Dwn.	Chkd.	Dgn.
				YY.MM.DD



Client/Project  
ALL SAINTS DEVELOPMENT LP

WINDMILL  
330 LAURIER ANENUE EAST  
OTTAWA, ON

Title  
LANDSCAPE DETAILS & NOTES - I

Project No. 160401789 Scale AS NOTED  
Drawing No. Sheet Revision  
L600 4 of 6 4



- (A) SILVA CELL SYSTEM (DECK, BASE, AND POSTS)
- (B) SUBGRADE, COMPACTED
- (C) GEOTEXTILE FABRIC, PLACED ABOVE SUBGRADE
- (D) 100 MM MIN AGGREGATE SUB BASE, COMPACTED TO 95% PROCTOR
- (E) SILVA CELL BASE SLOPE, 10% MAX
- (F) 25 TO 150 MM SPACING BETWEEN SILVA CELLS AT BASE
- (G) ANCHORING SPIKES - CONTACT DEEPROOT FOR ALTERNATIVE
- (H) GEOGRID, WRAPPED AROUND PERIMETER OF SYSTEM, WITH 150 MM TOE (OUTWARD FROM BASE) AND 300 MM EXCESS (OVER TOP OF DECK)
- (I) CABLE TIE, ATTACHING GEOGRID TO SILVA CELL AT BASE OF UPPER LEG FLARE, AS NEEDED

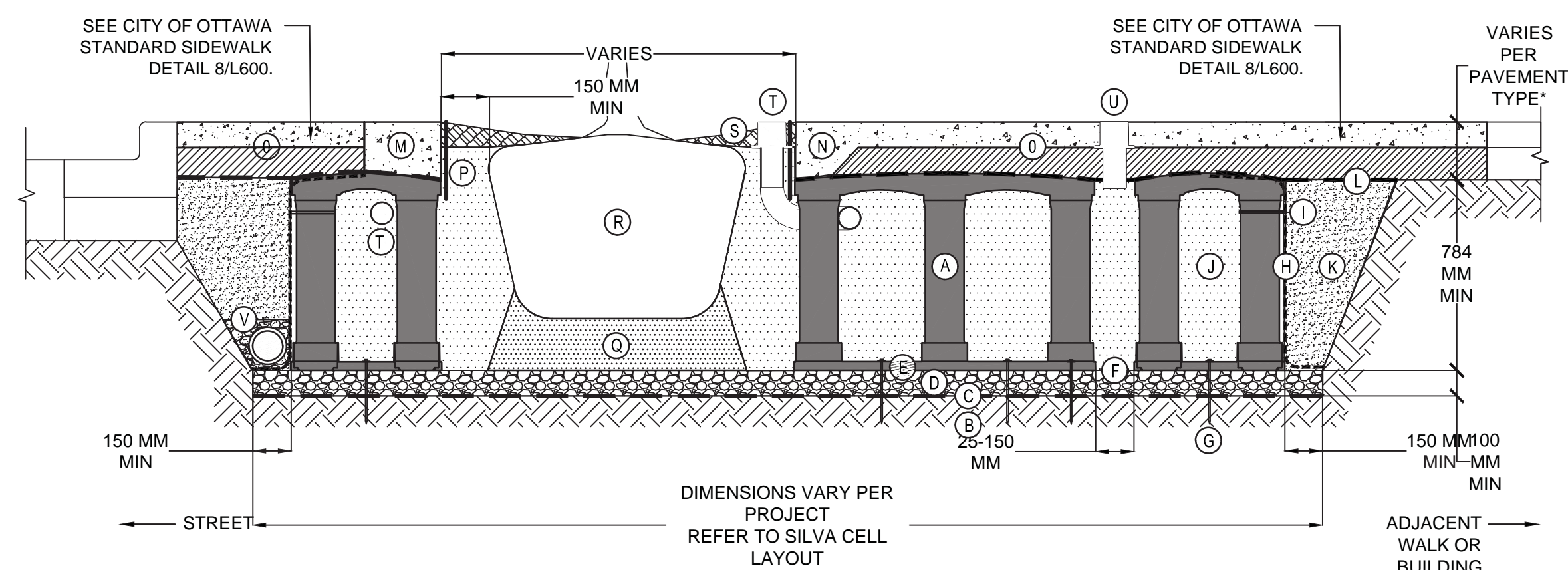
- (J) PLANTING SOIL, PER PROJECT SPECIFICATIONS, PLACED IN LIFTS AND WALK-IN COMPACTED TO 75-85% PROCTOR
- (K) COMPACTED BACKFILL, PER PROJECT SPECIFICATIONS
- (L) GEOTEXTILE FABRIC TO EDGE OF EXCAVATION
- (M) RIBBON CURB AT TREE OPENING (TO BE USED WITH PAVERS OR ASPHALT)
- (N) THICK PAVEMENT EDGE AT TREE OPENING (TO BE USED WITH CONCRETE)
- (O) SEE CITY OF OTTAWA STANDARD SIDEWALK DETAIL 8/L600.

- (P) DEEPROOT ROOT BARRIER, 300 OR 450 MM, DEPTH DETERMINED BY THICKNESS OF PAVEMENT SECTION, INSTALL DIRECTLY ADJACENT TO CONCRETE EDGE RESTRAINT
- (Q) PLANTING SOIL BELOW ROOT BALL, COMPACTED WELL TO PREVENT SETTLING
- (R) ROOT BALL
- (S) TREE OPENING TREATMENT, PER PROJECT SPECIFICATIONS
- (T) DEEPROOT WATER AND AIR VENT-ROOTBALL, WHEN REQUIRED

- (U) DEEPROOT WATER AND AIR VENT, WHEN REQUIRED
- (V) UNDERDRAIN SYSTEM, WHEN REQUIRED (LOCATION AND DETAILS BY OTHERS)

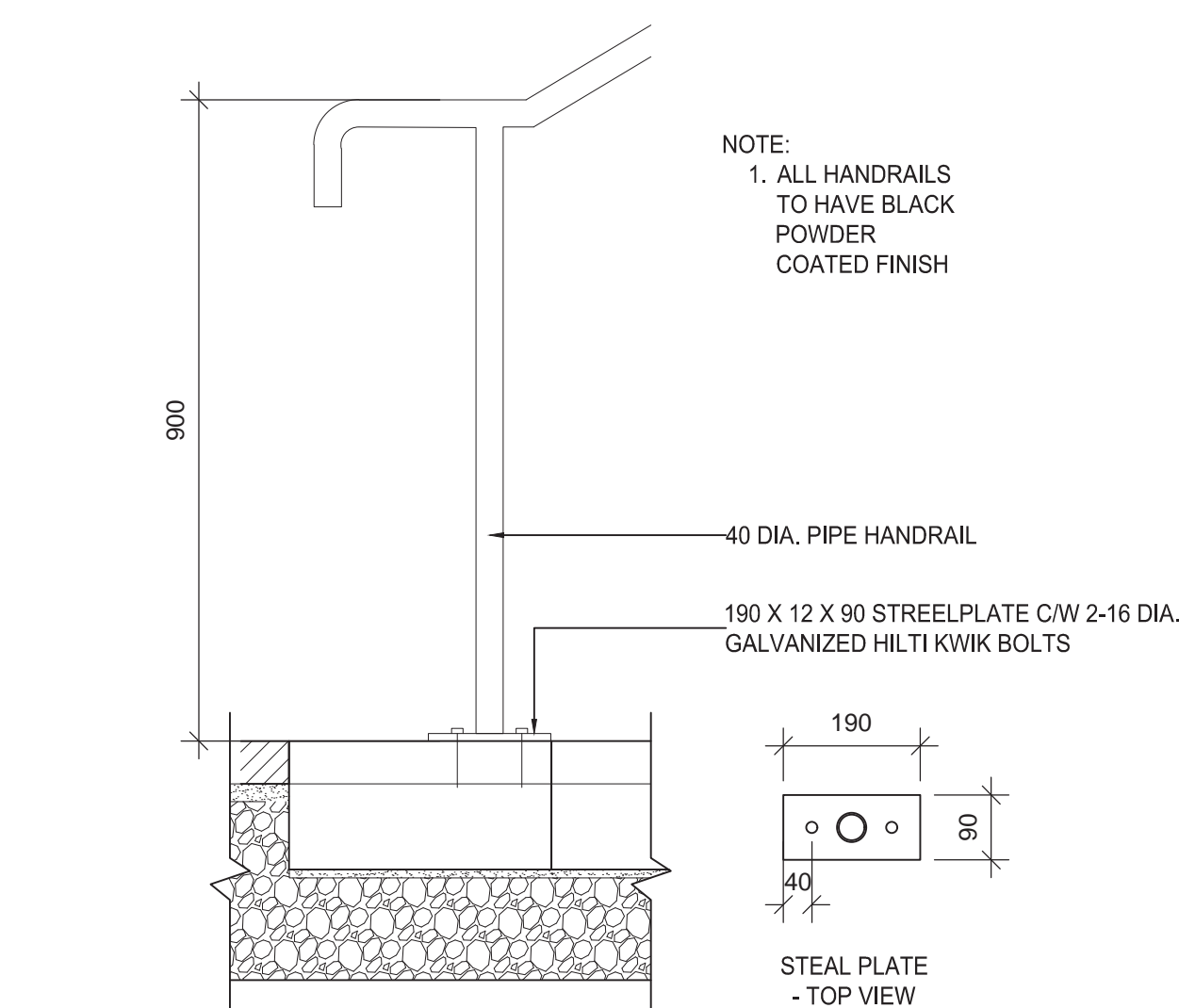
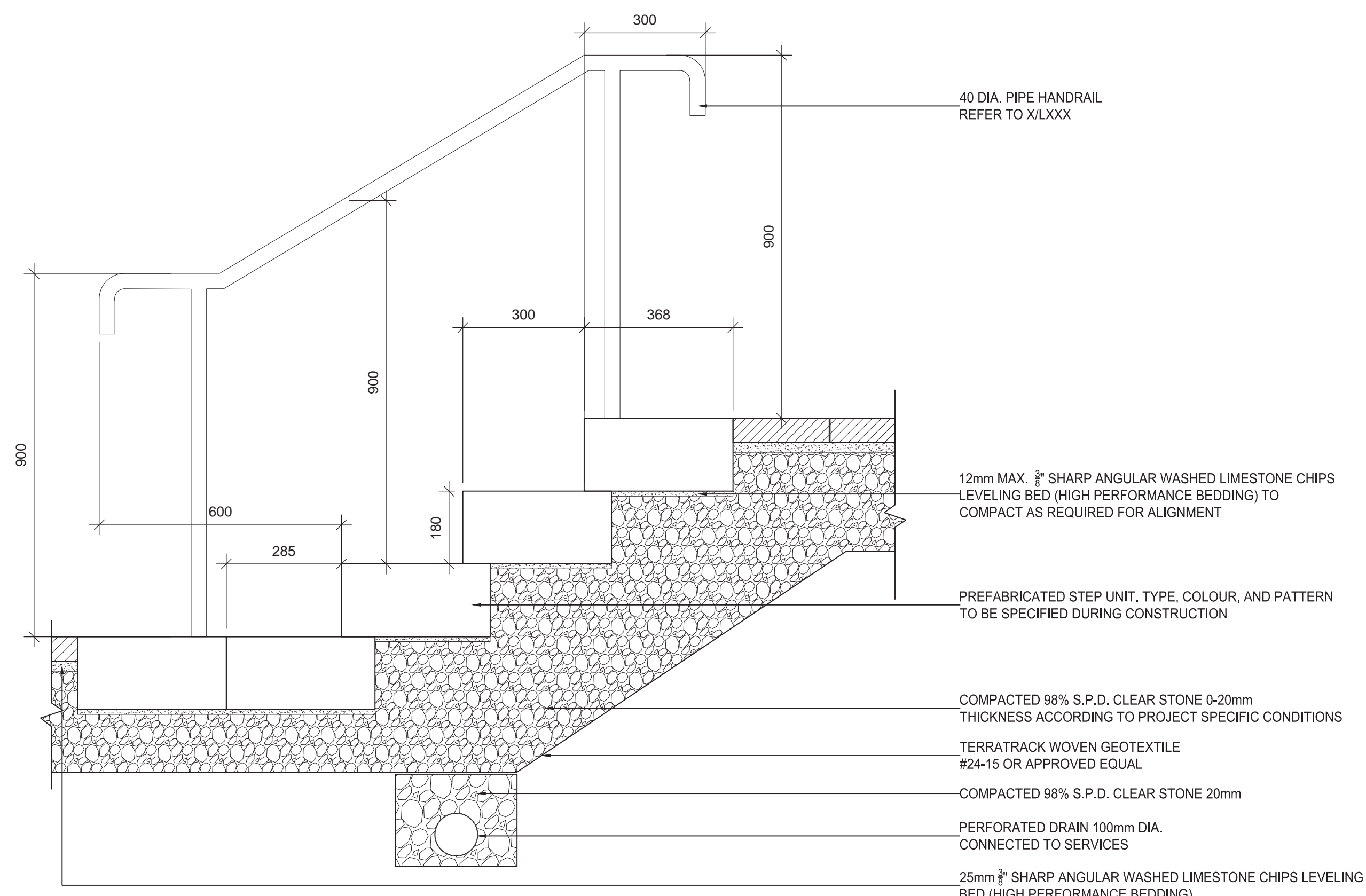
**NOTES**

1. EXCAVATION SHALL BE DONE IN ACCORDANCE WITH ALL APPLICABLE HEALTH AND SAFETY REGULATIONS
2. INSTALLATION TO BE COMPLETED IN ACCORDANCE WITH MANUFACTURER'S SPECIFICATIONS
3. PROVIDE SUPPLEMENTAL IRRIGATION
4. DO NOT SCALE DRAWINGS



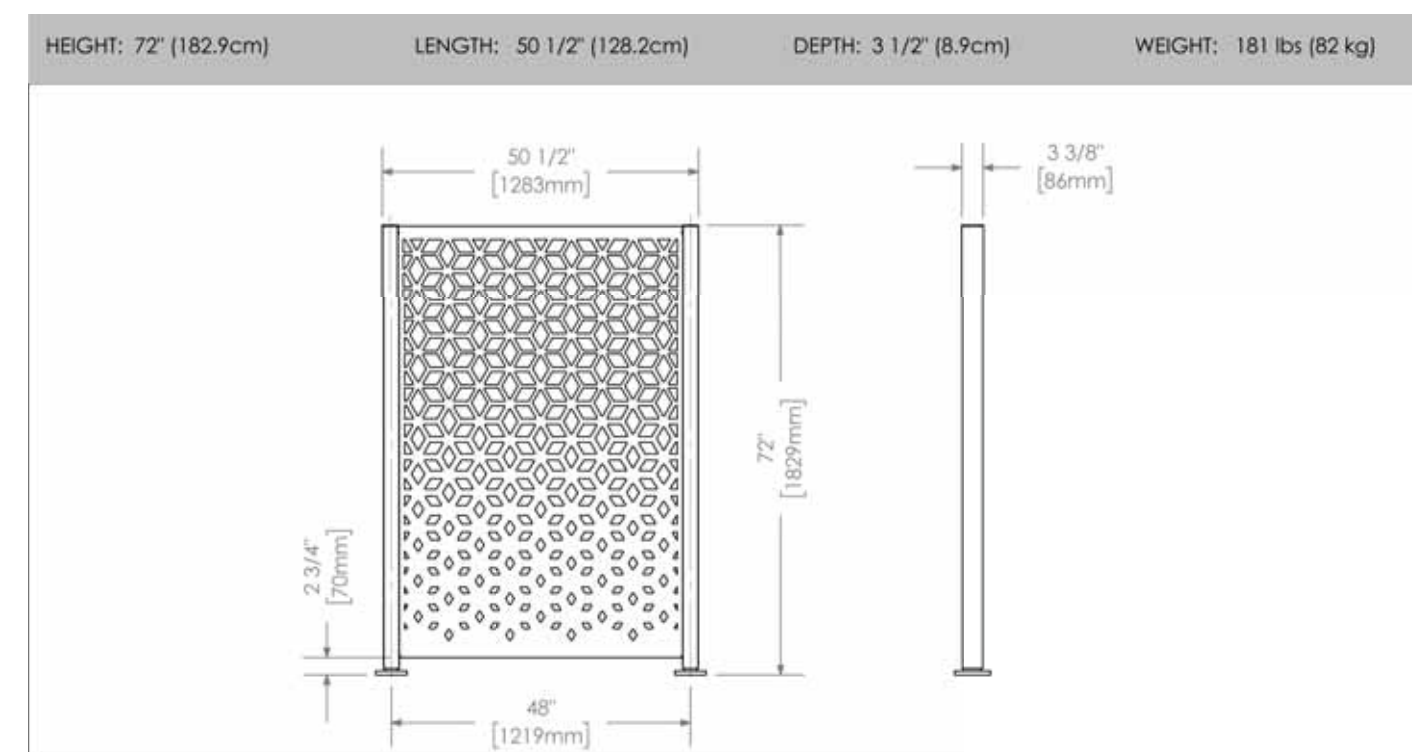
**1 SYLVA CELL SYSTEM 2X**  
N.T.S.

**2 PRECAST STEP UNIT DETAIL**  
1:10



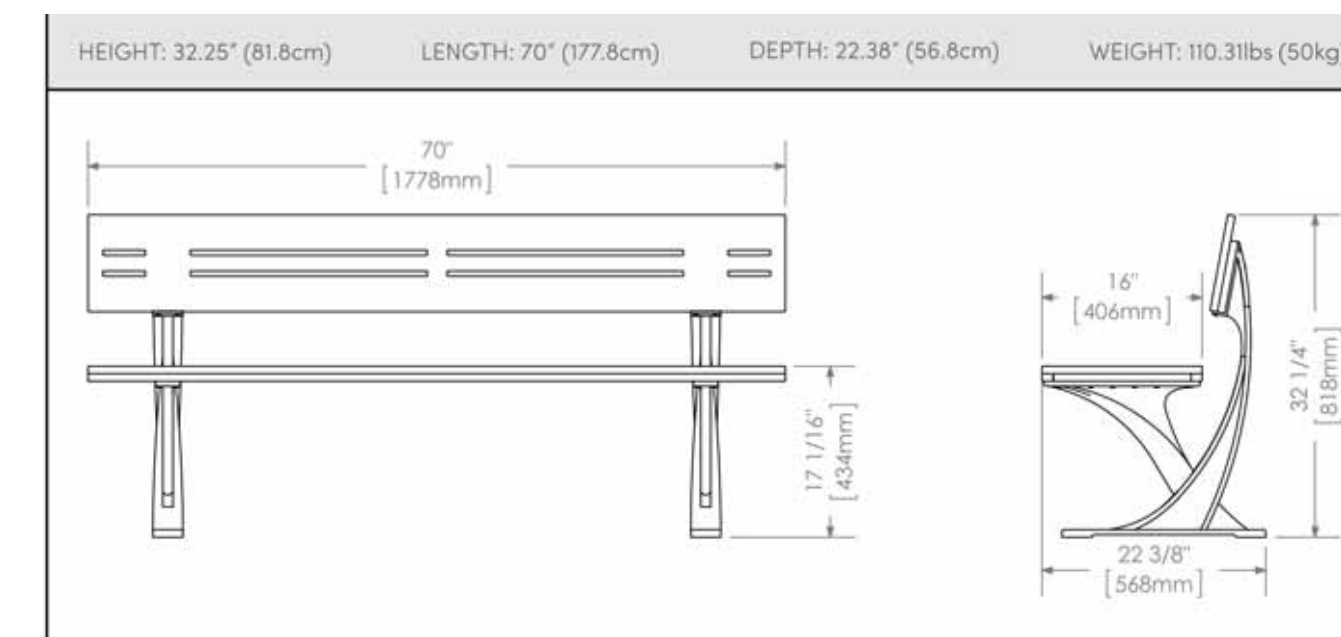
NOTE:  
1. ALL HANDRAILS TO HAVE BLACK POWDER COATED FINISH

**3 STAIR HANDRAIL**  
1:10



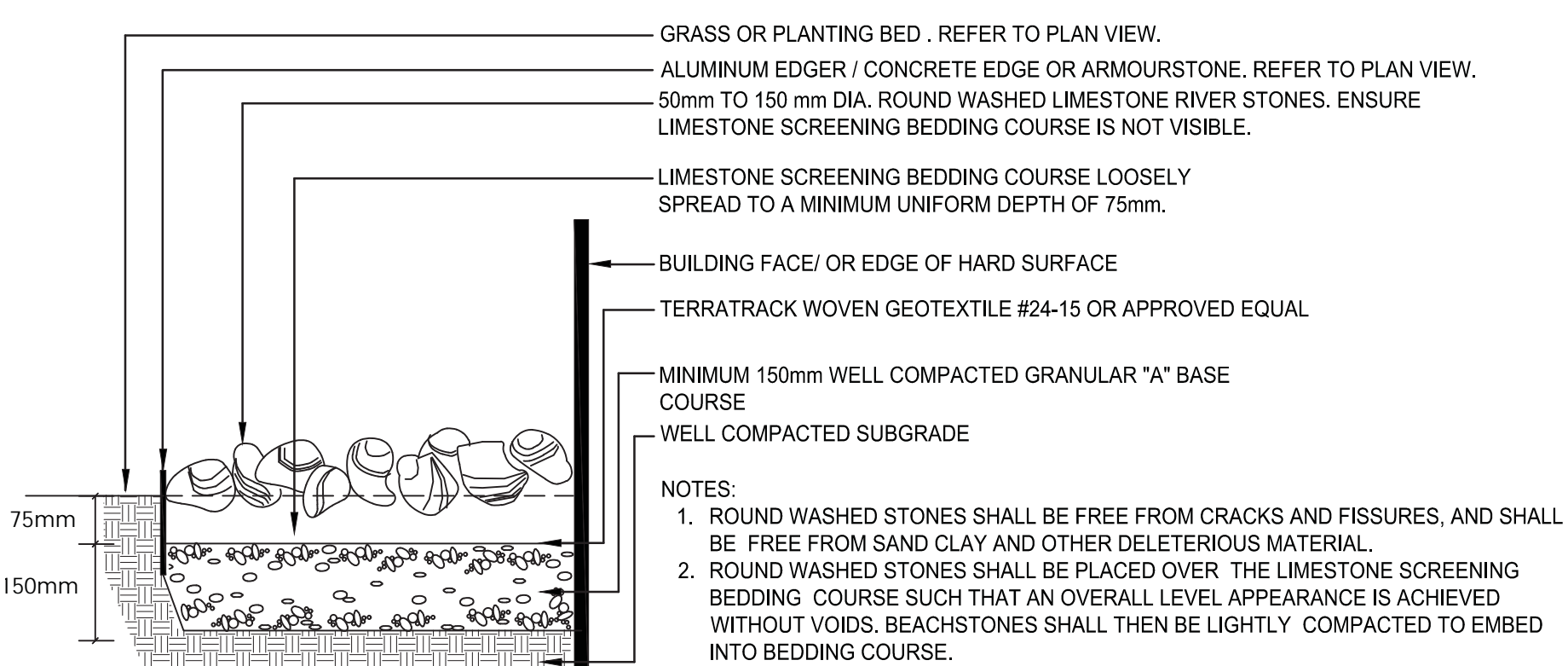
NOTES:  
1. Privacy Screen to be 'Flex Panels' by Maglin or approved equivalent  
2. MAGLIN CONTACT: TEL: 1-800-716-5506 EMAIL: sales@maglin.com  
3. Layout and size as indicated on Landscape Plan, panels to be used to be 1.8m high.  
4. Pattern: Fusion  
5. Colour: Black  
6. Finish: Matte  
7. Installation: Surface Mounted  
8. Shop drawings of privacy screen to be provided for approval by Landscape Architect prior to place order.

**4 PRIVACY SCREEN**  
N.T.S.



NOTES:  
1. Bench to be 'MTE-1200-00018' with end arm rests by Maglin or approved equivalent  
2. MAGLIN CONTACT: TEL: 1-800-716-5506 EMAIL: sales@maglin.com  
3. Colour: Metal: Black; Slats: Wood  
4. Finish: Matte  
5. Installation: Surface Mounted  
6. Shop drawings of planters to be provided for approval by Landscape Architect prior to place order.

**5 BENCH**  
N.T.S.



NOTES:  
1. ROUND WASHED STONES SHALL BE FREE FROM CRACKS AND FISSURES, AND SHALL BE FREE FROM SAND CLAY AND OTHER DELETERIOUS MATERIAL.  
2. ROUND WASHED STONES SHALL BE PLACED OVER THE LIMESTONE SCREENING BEDDING COURSE SUCH THAT AN OVERALL LEVEL APPEARANCE IS ACHIEVED WITHOUT VOIDS. BEACHSTONES SHALL THEN BE LIGHTLY COMPACTED TO EMBED INTO BEDDING COURSE.

**6 RIVERWASHED STONES**  
1:10

4	ISSUED FOR CITY REVIEW	TA	KP	24.09.23
3	ISSUED FOR CITY REVIEW	TA	KP	24.05.24
2	ISSUED FOR CITY REVIEW	CA	KP	24.01.31
1	ISSUED FOR 66% SUBMISSION	CA	KP	23.01.15
Revision		By	Appd.	YY.MM.DD
File Name:	160410406	CA	KP	KP
		Dwn.	Chkd.	Dgn.
				YY.MM.DD

Permit-Seal



Client/Project  
ALL SAINTS DEVELOPMENT LP

WINDMILL  
330 LAURIER ANENUE EAST  
OTTAWA, ON

Title  
LANDSCAPE DETAILS & NOTES - II

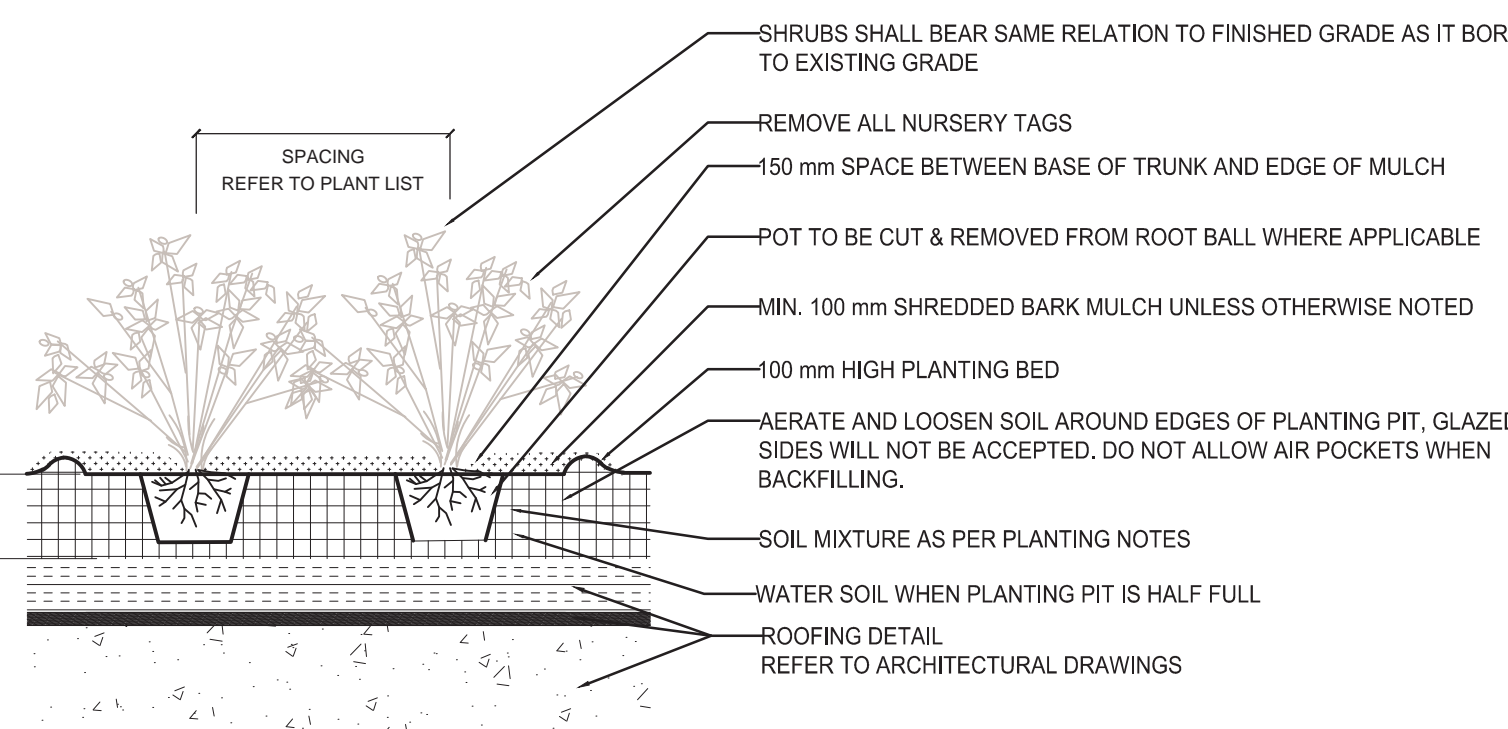
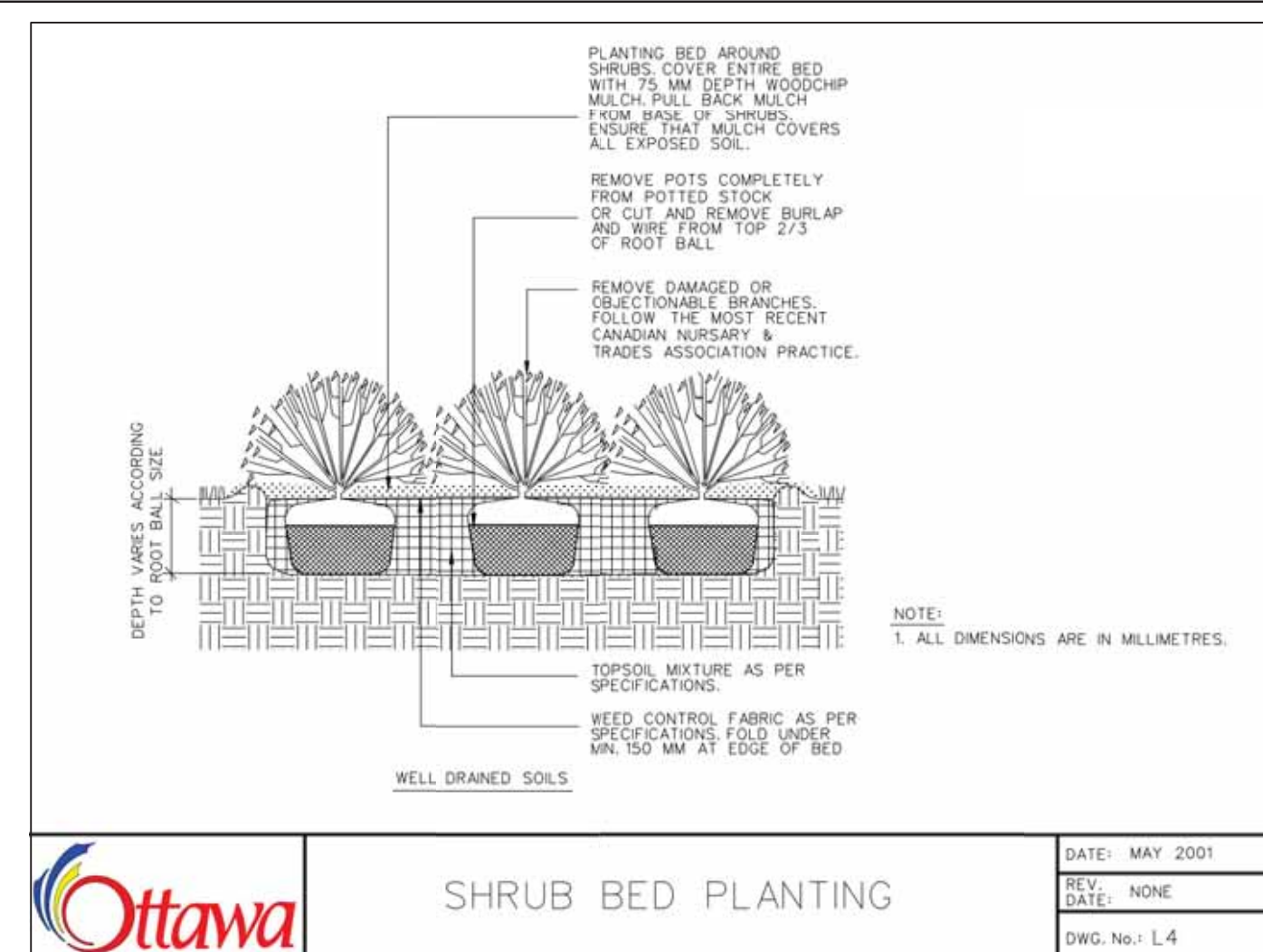
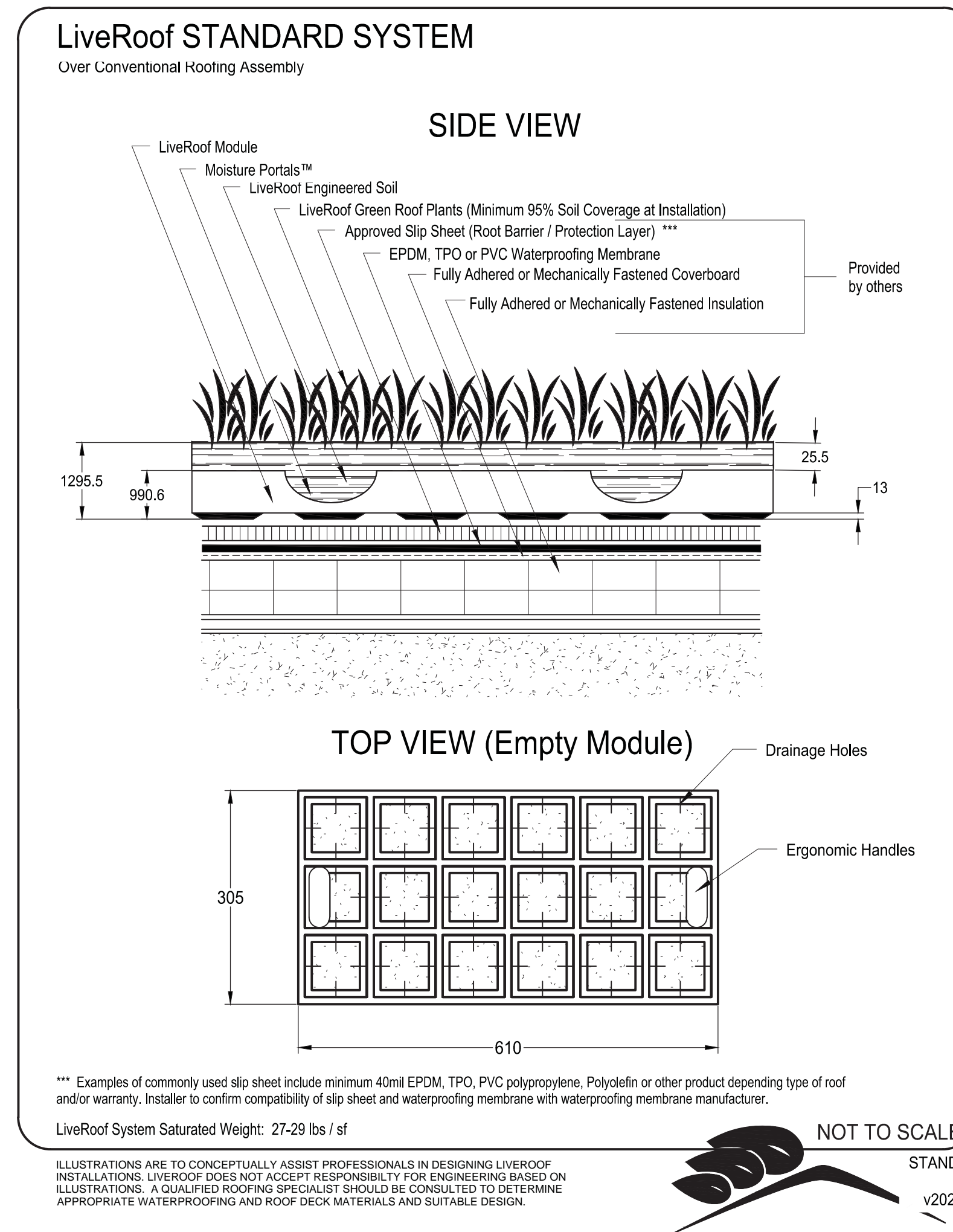
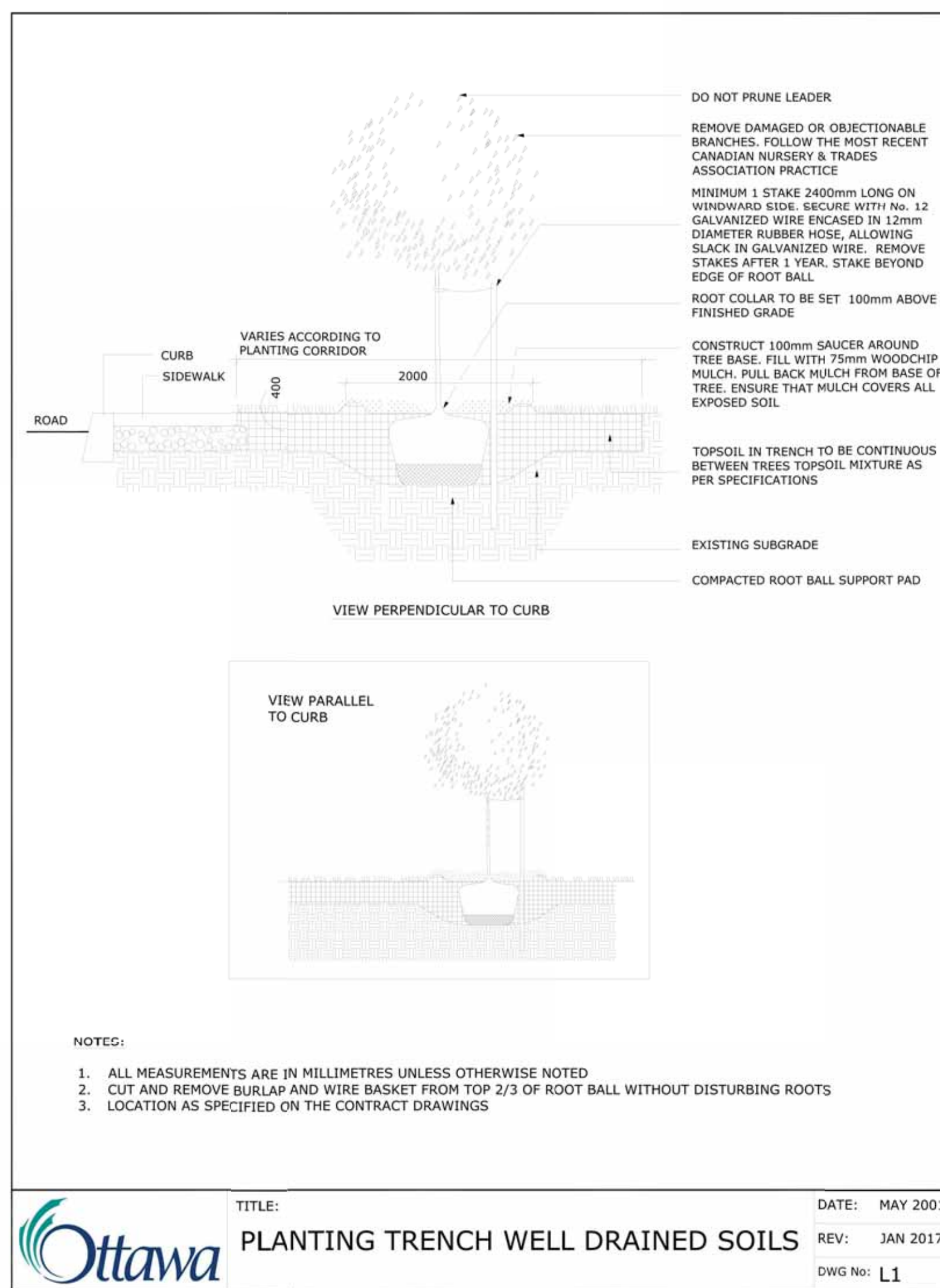
Project No.	Scale	
160401789	AS NOTED	
Drawing No.	Sheet	Revision
L601	5 of 6	4



Copyright Reserved

The Contractor shall verify and be responsible for all dimensions. DO NOT scale the drawing - any errors or omissions shall be reported to Stantec without delay. The Copyrights to all designs and drawings are the property of Stantec. Reproduction or use for any purpose other than that authorized by Stantec is forbidden.

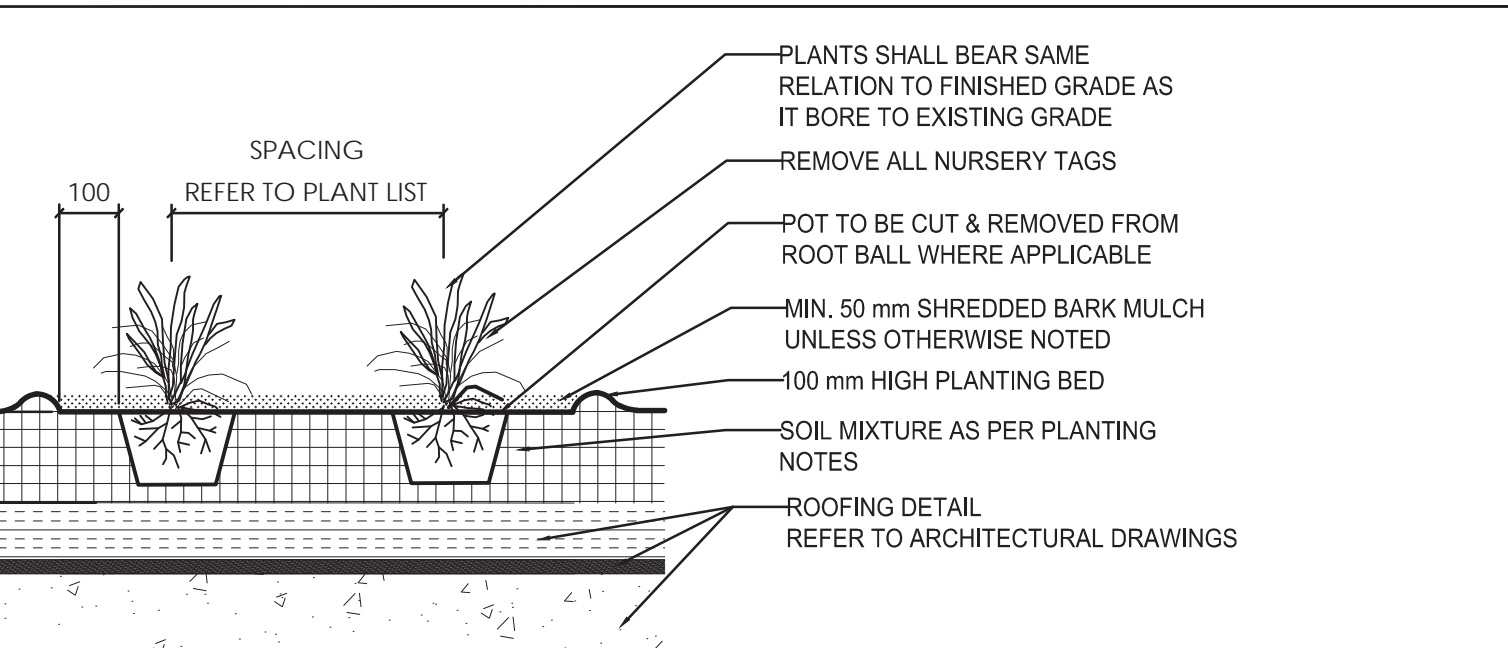
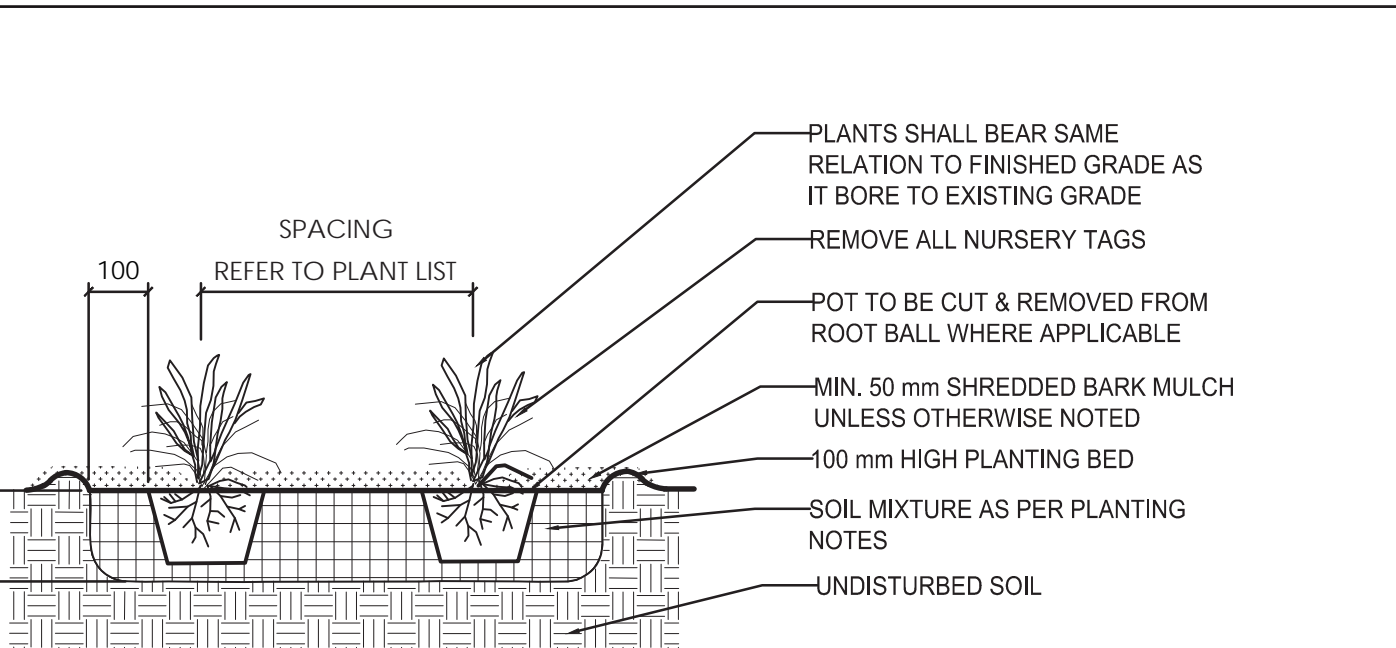
Legend



**PLANTING NOTES**

- THE DETAILS ON THIS SHEET DO NOT REPRESENT ANY PARTICULAR SPECIES.
- TREES AND SHRUBS AS INDICATED IN THE DETAILS REPRESENT BOTH CONIFEROUS AND DECIDUOUS SPECIES.
- MATERIAL PLANTED IN GROUP SHALL BE SET IN CONTINUOUS PLANTING BEDS.
- CENTRE LINE OF SHRUBS SHALL NOT BE CLOSER THAN 2.4m FROM BUILDING FACE TO PROTECT BUILDING FOOTINGS AND INSULATION.
- PRUNING - TO SUIT SPECIES - PRUNE BRANCHES BY 1/3 TO REMOVE DAMAGED OR OBJECTIONABLE BRANCHES FOLLOWING PROPER HORTICULTURAL PRACTICE. DO NOT PRUNE LEADERS.
- FIRMLY COMPACT BACKFILLED PLANTING MIXTURE TO ELIMINATE AIR POCKETS OR PREVENT SETTLEMENT.
- PLANTING MATERIAL QUALITY STANDARDS:  
7.1. ALL PLANT MATERIALS TO CONFORM TO THE CANADIAN NURSERY LANDSCAPE ASSOCIATION FOR VARIETY, SIZE AND CONDITION.  
7.2. PLANT MATERIAL COLLECTED FROM WILD SOURCES WILL NOT BE ACCEPTED.

- LANDSCAPE ARCHITECT RESERVES THE RIGHT TO REFUSE ACCEPTANCE OF ANY PLANT DISPLAYING POOR GROWTH HABITS, INJURY OR DISEASE.
- ANY PLANTS THAT DO NOT CONFORM TO THE ABOVE STANDARDS WILL BE PROMPTLY REMOVED FROM THE SITE BY THE CONTRACTOR AND REPLACED WITH MATERIAL OF ACCEPTABLE QUALITY AT NO ADDITIONAL COST TO THE PROJECT.
- TOPSOIL:  
8.1. SOIL TEXTURE BASED ON THE CANADIAN SYSTEM OF SOIL CLASSIFICATION TO CONSIST OF:  
  - CLAY: 14-20%
  - SILT: 0-35%
  - SAND: 45-70%
  - ORGANIC MATERIAL: 4-10%
  - pH: 6-8
- SPREAD TOPSOIL TO FOLLOWING MINIMUM DEPTHS AFTER SETTLEMENTS UNLESS OTHERWISE NOTED ON DETAILS:  
  - 300mm FOR PERENNIALS
  - 500mm FOR SHRUB BEDS
  - 1000mm FOR TREE PLANTING
- MULCH:  
  - MULCH SHALL BE SHREDDED WOOD VARYING IN SIZE FROM 25-125mm IN LENGTH FROM CONIFEROUS TREES.



Client/Project  
ALL SAINTS DEVELOPMENT LP

WINDMILL  
330 LAURIER ANENUE EAST  
OTTAWA, ON

Title  
LANDSCAPE DETAILS & NOTES - III

Project No.	Scale	
160401789	AS NOTED	
Drawing No.	Sheet	Revision
L602	6 of 6	4

