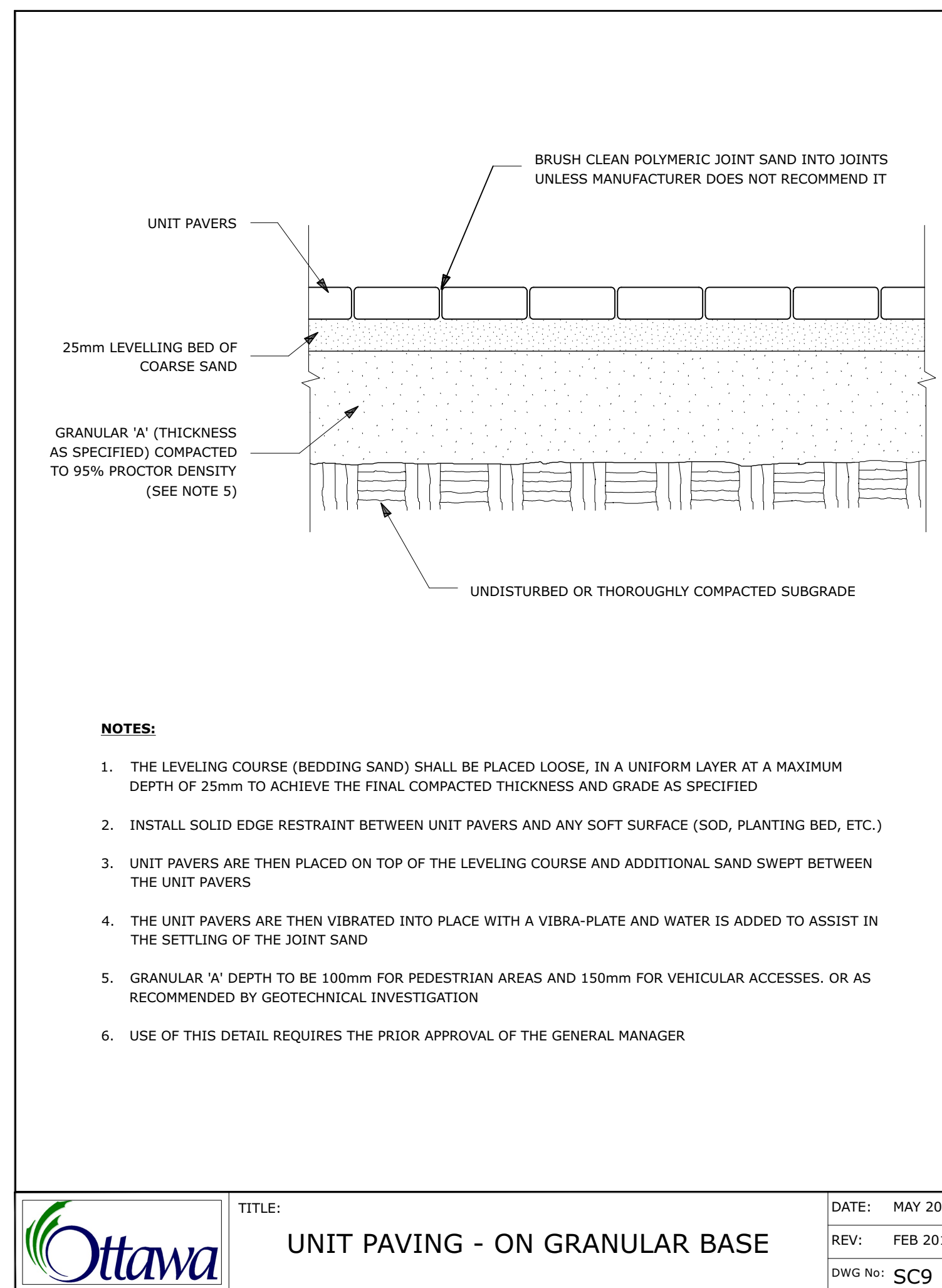
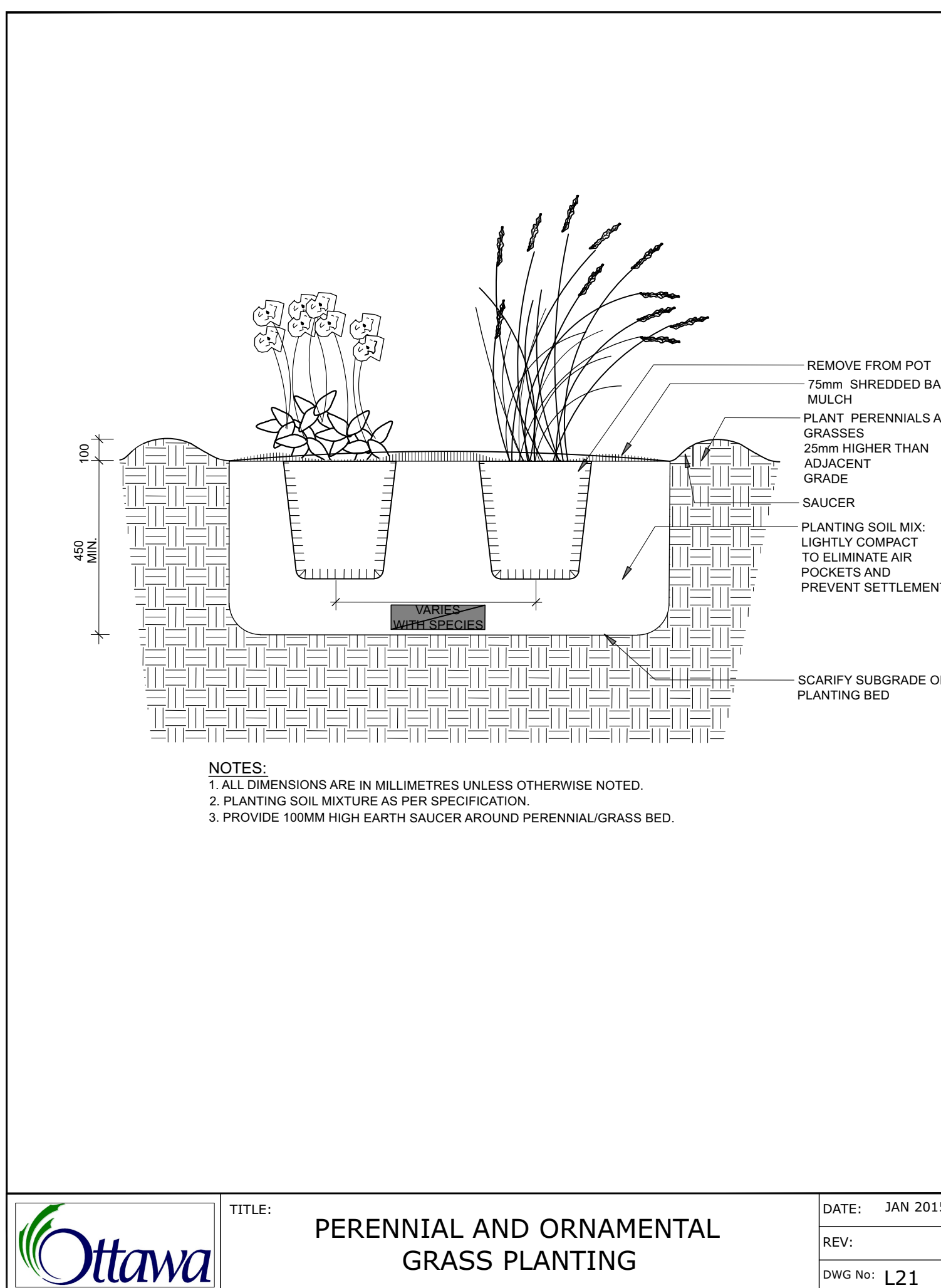
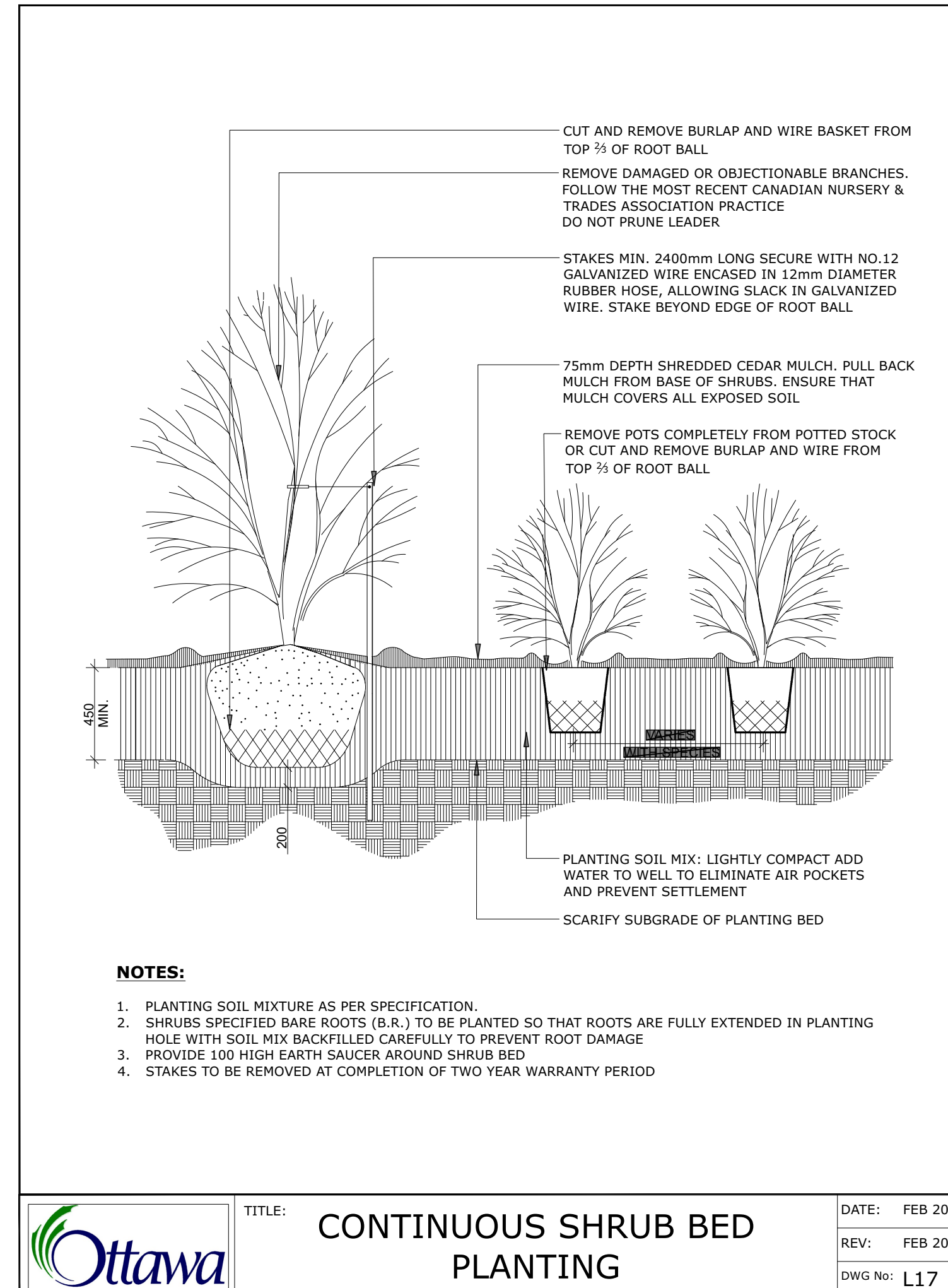
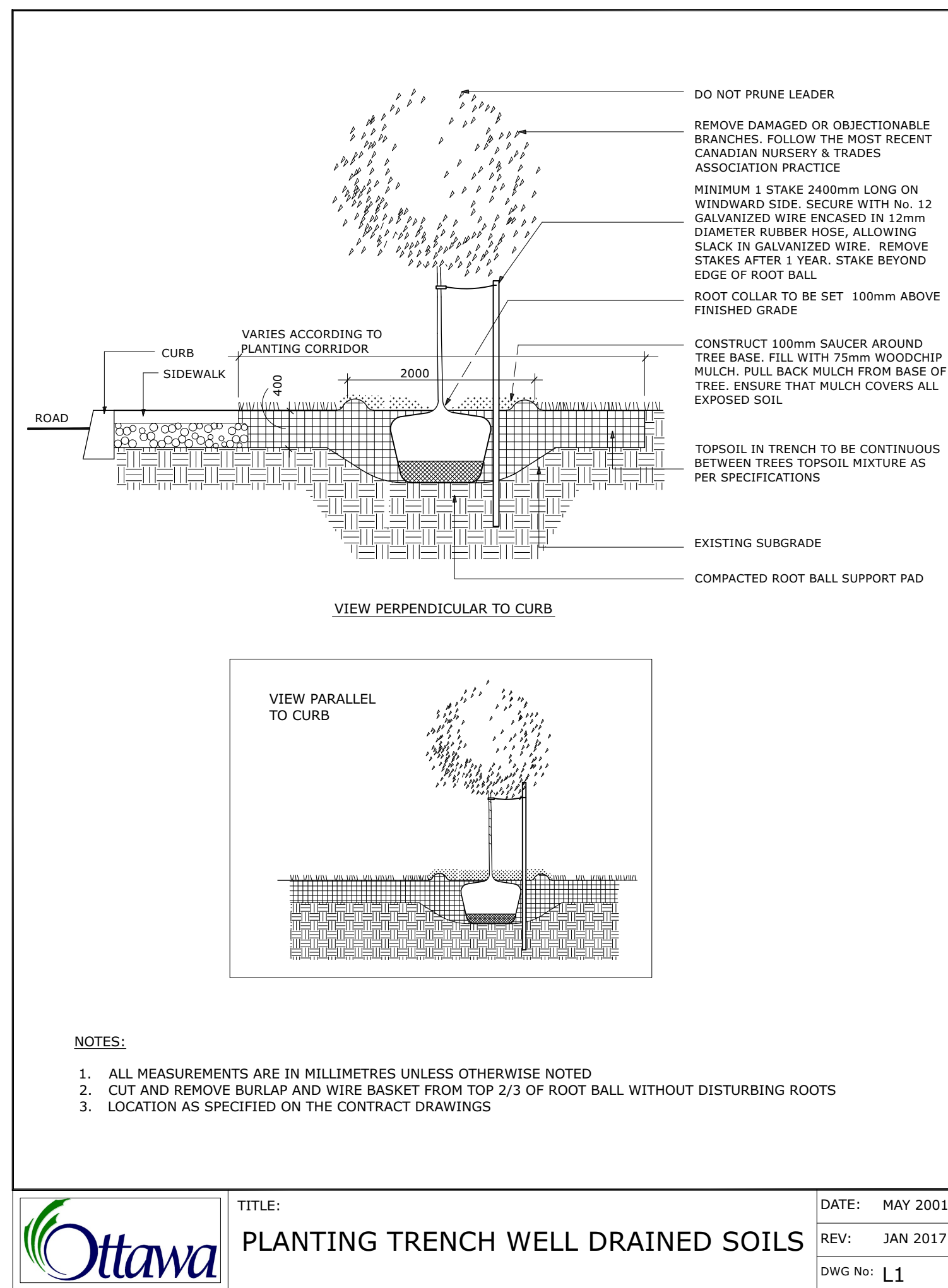


TREE SOIL VOLUME REQUIREMENTS:

- STANDARD TREE SOIL VOLUMES QUANTITIES INCLUDE THE TOP 900-1000mm OF SOIL/EXISTING SUBSOIL LAYER TO CALCULATE TOTAL SOIL VOLUMES REQUIRED BY CITY OF OTTAWA FOR SUSTAINABLE TREE GROWTH. WHERE LARGER SOFT AREAS ARE AVAILABLE, THE TOP 400-500mm LAYER IS USED TO CALCULATE SOIL VOLUMES.
- WHERE EXISTING MATERIAL BELOW THE SPECIFIED TOPSOIL IS NOT CONDUSIVE TO TREE GROWTH, AN ADDITIONAL LAYER OF PLANTING MEDIUM IS TO BE INSTALLED BELOW SPECIFIED TOPSOIL DEPTH TO OBTAIN 900-1000mm SOIL VOLUME DEPTH REQUIRED.
- REFER TO SOIL VOLUME CHART AND PLANS FOR AREA WHERE TREE SOIL VOLUMES ARE REQUIRED.



ADDITIONAL NOTES FOR UNIT PAVING: 150mm DEPTH GRANULAR 'A' TO BE USED ONLY IN PEDESTRIAN WHERE NO OR HAND SNOW REMOVAL IS PLANNED. ALL OTHER PEDESTRIAN AREAS ARE TO RECEIVE 200mm COMPACTED GRANULAR 'A' MINIMUM. FURTHER ADJUSTMENTS TO BE SPECIFIED IN RELATION TO SITE CONDITIONS AND GEOTECHNICAL RECOMMENDATIONS.

7		
6		
5		
4	Re-issued for Site Plan Control	Oct. 18/24
3	Re-issued for Site Plan Control	Sep. 09/24
2	Re-issued for Site Plan Control	Sep. 13/23
1	Issued for Site Plan Control	Mar. 30/23
No.	ISSUE	DATE

SCALE:

Ruhland & Associates Ltd
 260-1750 Courtwood Crescent, Ottawa, Ontario K2C 1B5
 P (613) 238-4744 x 320 F (613) 238-1151 info@ruha.ca www.ruha.ca

PROJECT NORTH:	PROFESSIONAL STAMP:
PROFESSIONAL STAMP:	PROFESSIONAL STAMP:

PROJECT:
**266 Park Street
 OTTAWA ON**

DRAWING:
LANDSCAPE DETAILS

DESIGN:	M.R.	DRAWING NO:	L-02
DRAWN:	M.M.	G-C NO:	
CHECKED:	M.R.		
PLOTTED:			