

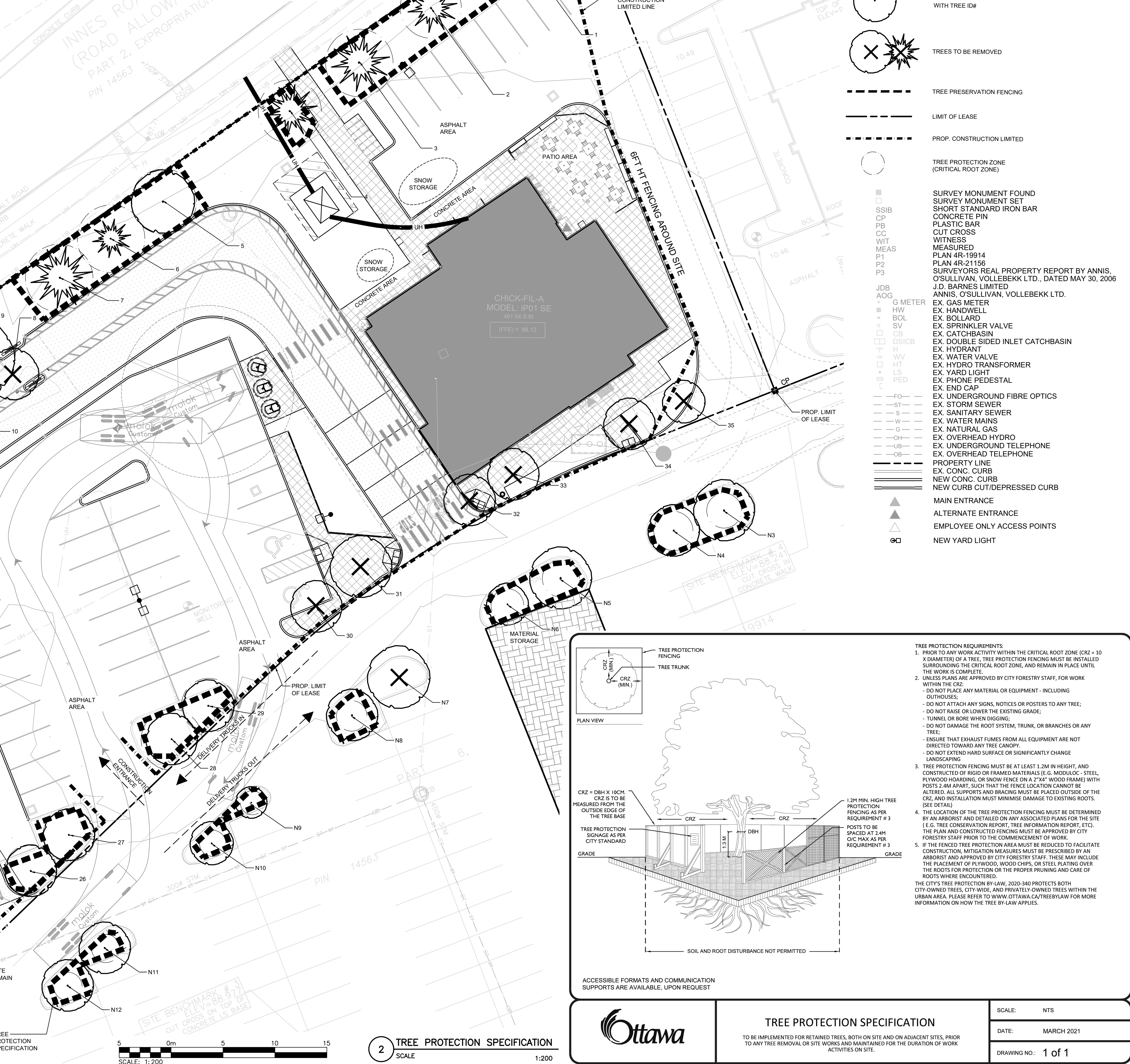
E:\BRM\BRM-230202042-H0160 Execution\65 Drawings\230202042-H0-TPP-RA.dwg
4 October 2024

Project: CFA Orleans		Date of Field Work: August 23, 2023									
Tree ID#	Botanical name	Common name	Quantity	DBH (cm)	Crown (m)	CRZ=10xDim (m)	Ownership	Condition	Action	Reasons for Removal	
1	Tilia cordata	Littleleaf Linden	1	30	6	3	Private onsite	Good	Protect		
2	Picea pungens	Blue Spruce	1	28	5	2.8	Private onsite	Good	Protect		
3	Picea pungens	Blue Spruce	1	31	6	3.1	Private onsite	Fair	Protect		
4	Picea pungens	Blue Spruce	1	29	5	2.9	Private onsite	Good	Protect		
5	Tilia cordata	Littleleaf Linden	1	30	6	3	Private onsite	Fair	Protect		
6	Picea pungens	Blue Spruce	1	31	4	3.1	Private onsite	Good	Protect		
7	Picea pungens	Blue Spruce	1	31	6	3.1	Private onsite	Good	Protect		
8	Gleditsia triacanthos	Honey Locust	1	20	5	2	Private onsite	Good	Remove	Construction	
9	Tilia cordata	Littleleaf Linden	1	27	8	2.7	Private onsite	Good	Remove	Construction	
10	Gleditsia triacanthos	Honey Locust	1	28	5	2.8	Private onsite	Good	Remove	Construction	
11	Tilia cordata	Littleleaf Linden	1	24	7	2.4	Private onsite	Good to Fair	Remove	Construction	
12	Picea pungens	Blue Spruce	1	28	4	2.8	Private onsite	Good	Protect		
13	Picea pungens	Blue Spruce	1	26	3	2.6	Private onsite	Fair	Protect		
14	Picea pungens	Blue Spruce	1	25	5	2.5	Private onsite	Fair	Protect		
15	Picea pungens	Blue Spruce	1	36	4	3.6	Private onsite	Good	Protect		
16	Gleditsia triacanthos	Honey Locust	1	20	5	2	Private onsite	Fair	Protect		
17	Gleditsia triacanthos	Honey Locust	1	20	5	2	Private onsite	Fair	Protect		
18	Gleditsia triacanthos	Honey Locust	1	14	3	1.4	Private onsite	Good	Protect		
19	Gleditsia triacanthos	Honey Locust	1	16	4	1.6	Private onsite	Good	Protect		
20	Gleditsia triacanthos	Honey Locust	1	16	5	1.6	Private onsite	Good	Protect		
21	Gleditsia triacanthos	Honey Locust	1	14	4	1.4	Private onsite	Good	Protect		
22	Gleditsia triacanthos	Honey Locust	1	13	4	1.3	Private onsite	Fair	Protect		
23	Gleditsia triacanthos	Honey Locust	1	16	4	1.6	Private onsite	Good	Protect		
24	Gleditsia triacanthos	Honey Locust	1	13	6	1.3	Private onsite	Fair	Protect		
25	Gleditsia triacanthos	Honey Locust	1	15	6	1.5	Private on Adjoining Site	Good	Protect		
26	Gleditsia triacanthos	Honey Locust	1	24	5	2.4	Private onsite	Good	Protect		
27	Gleditsia triacanthos	Honey Locust	1	24	5	2.4	Private onsite	Good	Protect		
28	Gleditsia triacanthos	Honey Locust	1	28	5	2.8	Private onsite	Good	Protect		
29	Gleditsia triacanthos	Honey Locust	1	25	5	2.5	Private onsite	Good	Protect		
30	Gleditsia triacanthos	Honey Locust	1	27	5	2.7	Private onsite	Good to Fair	Remove	Construction	
31	Gleditsia triacanthos	Honey Locust	1	25	6	2.5	Private onsite	Fair to Poor	Remove	Construction	
32	Gleditsia triacanthos	Honey Locust	1	25	5	2.5	Private onsite	Good	Remove	Construction	
33	Gleditsia triacanthos	Honey Locust	1	25	5	2.5	Private onsite	Good to Fair	Remove	Construction	
34	Gleditsia triacanthos	Honey Locust	1	24	5	2.4	Private onsite	Fair to Poor	Remove	Construction	
35	Gleditsia triacanthos	Honey Locust	1	25	4	2.5	Private onsite	Fair	Remove	Construction	

TREE REMOVAL COMPENSATION REQUIREMENTS												
Existing Tree ID#	8	9	10	11	30	31	32	33	34	35	N7	Total Trees Required for Compensation
Existing Tree DBH (cm)	20	27	28	24	27	25	25	25	24	25	16	
Existing Tree Conditions	Good	Good	Good	Good to Fair	Good to Fair	Fair to Poor	Good	Good to Fair	Fair to Poor	Fair	Good	
Action	Remove	Remove	Remove	Remove	Remove	Remove	Remove	Remove	Remove	Remove	Remove	
Trees Required for Compensation	1	1	1	1	1	1	1	1	1	1	1	11

BASED ON THE CITY OF OTTAWA TREE PROTECTION BY-LAW NO. 2020-340, THE DBH OF ALL PROPOSED REMOVED TREE IS LESS THAN 30 CM, REPLACEMENT OF THE TREE AT A 1:1 RATIO WILL BE REQUIRED, FOR PRIVATE PROPERTY IN THE SUBURBAN AREA, SITE AREA (APPROX. 4740 SQM), LESS THAN 1 HECTARE.

NEIGHBOR TREES										
N1	Gleditsia triacanthos	Honey Locust	1	13	3	1.3	Private on Adjoining Site	Good	Retain	
N2	Gleditsia triacanthos	Honey Locust	1	16	6	1.6	Private on Adjoining Site	Fair	Retain	
N3	Gleditsia triacanthos	Honey Locust	1	16	6	1.6	Private on Adjoining Site	Fair	Protect	
N4	Gleditsia triacanthos	Honey Locust	1	18	5	1.8	Private on Adjoining Site	Fair	Protect	
N5	Gleditsia triacanthos	Honey Locust	1	17	6	1.7	Private on Adjoining Site	Fair	Protect	
N6	Gleditsia triacanthos	Honey Locust	1	15	4	1.5	Private on Adjoining Site	Good to Fair	Protect	
N7	Gleditsia triacanthos	Honey Locust	1	16	6	1.6	Private on Adjoining Site	Good	Remove	Construction Access Route
N8	Gleditsia triacanthos	Honey Locust	1	14	5	1.4	Private on Adjoining Site	Good to Fair	Protect	
N9	Gleditsia triacanthos	Honey Locust	1	11	3	1.1	Private on Adjoining Site	Good	Protect	
N10	Gleditsia triacanthos	Honey Locust	1	12	4	1.2	Private on Adjoining Site	Fair	Protect	
N11	Gleditsia triacanthos	Honey Locust	1	13	5	1.3	Private on Adjoining Site	Fair	Protect	
N12	Gleditsia triacanthos	Honey Locust	1	13	5	1.3	Private on Adjoining Site	Fair	Protect	



LEGEND

- EXISTING CONIFEROUS TREES WITH TREE ID#
- EXISTING DECIDUOUS TREES WITH TREE ID#
- TREES TO BE REMOVED
- TREE PRESERVATION FENCING
- LIMIT OF LEASE
- PROP. CONSTRUCTION LIMITED
- TREE PROTECTION ZONE (CRITICAL ROOT ZONE)
- SURVEY MONUMENT FOUND
- SSIB
- CP
- PB
- CC
- WIT
- MEAS
- P1
- P2
- P3
- JDB
- AOG
- G METER
- HW
- BOL
- SV
- CB
- DSICB
- H
- WV
- HT
- LS
- PED
- FO
- ST
- US
- W
- G
- OH
- UB
- OB
- PROPERTY LINE
- EX. CONC. CURB
- NEW CONC. CURB
- NEW CURB CUT/DEPRESSED CURB
- MAIN ENTRANCE
- ALTERNATE ENTRANCE
- EMPLOYEE ONLY ACCESS POINTS
- NEW YARD LIGHT

Chick-fil-A
5200 Buffington Road
Atlanta, Georgia 30349-2998

exp Services Inc.
t: +1.905.793.9800 | f: +1.905.793.0641
1595 Clark Boulevard
Brampton, ON L6T 4V1
Canada
www.exp.com

exp.

BUILDINGS • EARTH & ENVIRONMENT • ENERGY • INDUSTRIAL • INFRASTRUCTURE • SUSTAINABILITY

CHICK-FIL-A
ORLEANS
4270 Innes Road
Ottawa, ON

FSR#30038
BUILDING TYPE / SIZE: IP01 SE
RELEASE: XXXXXXXX

REVISION SCHEDULE

NO.	DATE	DESCRIPTION
A	2024/10/04	ISSUED FOR SPA

CONSULTANT PROJECT # BRM00230202042-H0
PROJECT STATUS SPA
DATE MAY 2023
DRAWN BY L.Z.

Information contained on this drawing and in all digital files produced for above named project may not be reproduced in any manner without express written or verbal consent from authorized project representatives.

TREE PROTECTION PLAN
SHEET NUMBER
TPP

1 TREE PROTECTION PLAN
SCALE 1:200

2 TPP
TREE PROTECTION SPECIFICATION
SCALE 1:200

2 TREE PROTECTION SPECIFICATION
SCALE 1:200

Ottawa

TREE PROTECTION SPECIFICATION
TO BE IMPLEMENTED FOR RETAINED TREES, BOTH ON SITE AND ON ADJACENT SITES, PRIOR TO ANY TREE REMOVAL OR SITE WORKS AND MAINTAINED FOR THE DURATION OF WORK ACTIVITIES ON SITE.

SCALE: NTS
DATE: MARCH 2021
DRAWING NO.: 1 of 1