



Chick-fil-A

Chick-fil-A
5200 Buffington Road
Atlanta, Georgia 30349-2998

exp Services Inc.
1595 Clark Boulevard
Brampton, ON L6T 4V1
Canada
www.exp.com



• BUILDINGS • EARTH & ENVIRONMENT • ENERGY •
• INDUSTRIAL • INFRASTRUCTURE • SUSTAINABILITY

10/04/2024

CHICK-FIL-A ORLEANS

4270 Innes Road
Ottawa, ON

FSR#30038

BUILDING TYPE / SIZE: IP01 SE
RELEASE: XXXXXXXX

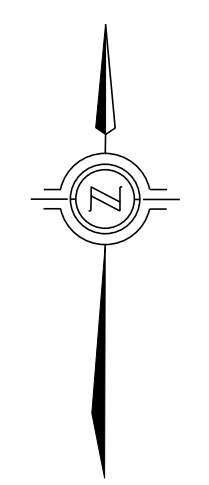
REVISION SCHEDULE		
NO.	DATE	DESCRIPTION
A	2024-10-04	FOR SPA

CONSULTANT PROJECT #	BRM0023002042-H0
PROJECT STATUS	SPA
DATE	OCTOBER 2024
DRAWN BY	K.J.

Information contained on this drawing and in all digital files produced for above named project may not be reproduced in any manner without express written or verbal consent from authorized project representatives.

SHEET
SITE GRADING PLAN

SHEET NUMBER
CS100



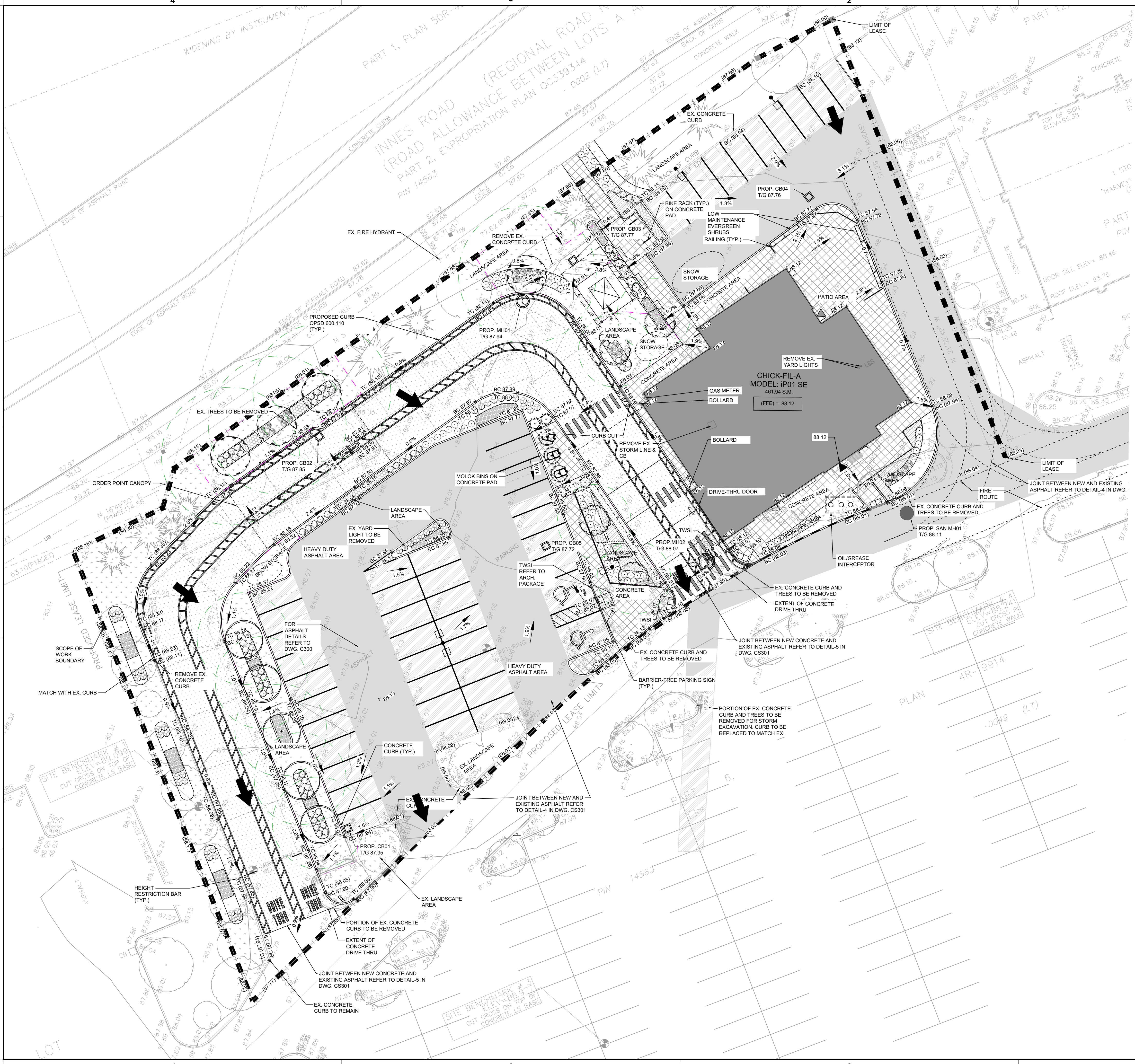
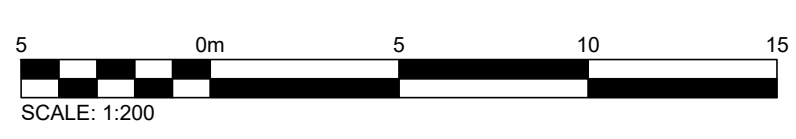
GENERAL NOTES:

- SURVEY INFORMATION PROVIDED BY J.D BARNES DATED 2023-06-12. GRID BEARINGS ARE UTM GRID, DERIVED FROM REAL TIME NETWORK (RTN) OBSERVATIONS, VIM LONE 18, NAD83 (CSRS) (2010.0). DISTANCES ARE GROUND AND CAN BE CONVERTED TO GRID BY MULTIPLYING BY THE COMBINED SCALE FACTOR OF 0.999610. FOR BEARING COMPARISONS, A ROTATION OF 10407° CLOCKWISE WAS APPLIED TO BEARINGS ON PLAN P1, P2 AND P3 TO ROTATE TO NAD83 UTM 18.
- GENERAL CONTRACTOR IS RESPONSIBLE FOR ALL LOCATES PRIOR TO COMMENCEMENT OF CONSTRUCTION/DEMOLITION.
- ALL WORK TO BE DONE BY THE GENERAL CONTRACTOR UNLESS NOTED OTHERWISE - WITHIN PROPERTY LEASE LINES.
- GEO TECHNICAL INVESTIGATION PROPOSED CHICK-FIL-A RESTAURANT #30042 BY BLUE FROG DATED AUGUST 22, 2024

LEGEND:

- EX. LIGHT POLE
- EX. YARD LIGHT
- EX. JUNCTION BOX
- ▭ PROP. BACKFLOW PREVENTER
- PROP. WATER METER
- EX. WATER METER
- EX. HYDRO POLE
- EX. GUY WIRE AND ANCHOR
- EX. TRAFFIC SIGNAL
- EX. GAS VALVE
- EX. SIGN
- EX. MONITORING WELL
- EX. IRON PIN
- EX. FOUND LEAD PIN
- FOUND IRON BAR
- EX. FIRE HYDRANT
- EX. STORM MH
- NEW STORM MH
- EX. SANITARY MH
- NEW SANITARY MH
- EX. STORM CB
- NEW STORM CB
- NEW STORM CBMH
- EX. WATER VALVE
- EX. HYDRO POLE
- EX. GUY WIRE AND ANCHOR
- DOOR
- EX. CONTROL MONUMENT
- PROPERTY LINE
- EX. FENCE LINE
- EX. CONC. CURB
- NEW CONC. CURB
- CONC. CURB REMOVAL
- × XXXX.XX EX. ELEVATION
- × (XXX.XX) MATCH EX. ELEVATION
- + XXX.XX PROP. ELEVATION
- + TCXXX.XX PROP. TOP OF CURB ELEVATION
- + BCXXX.XX PROP. BOTTOM OF CURB ELEVATION
- ▲ PROP. SLOPE
- ▲ EX. SLOPE
- ▲ EX. OVERLAND FLOW
- ➔ PROPOSED OVERLAND FLOW
- EX. CONC. CURB
- NEW CONC. CURB
- NEW CONC. CUT
- PROPOSED SWALE
- PROPOSED SUBDRAIN
- MATCH TO EXISTING
- MAX 3:1 SLOPING
- SCOPE OF WORK BOUNDARY
- ▨ LIGHT DUTY ASPHALT
- ▨ HEAVY DUTY CONCRETE
- ▨ LIGHT DUTY CONCRETE
- ▨ HEAVY DUTY ASPHALT

A SITE GRADING PLAN
SCALE 1:200



E:\BRM\BRM-23002042-H0\60 Execution\65 Drawings\23002042-H0-CS100-RA.dwg
3 October 2024
XREF-CFA-TBLK.dwg - CS100

Issued for SPA