

PLAN OF SURVEY OF  
**PART OF LOT 1**  
**CONCESSION 11**  
 GEOGRAPHIC TOWNSHIP OF CUMBERLAND  
 CITY OF OTTAWA

SCALE 1 : 250

J.D. BARNES LIMITED  
 © COPYRIGHT 2023

ALL DISTANCES AND/OR COORDINATES SHOWN ON THIS PLAN ARE IN METRIC UNITS AND CAN BE CONVERTED TO FEET BY DIVIDING BY 0.3048.

**NOTES**

BEARINGS ARE UTM GRID, DERIVED FROM REAL TIME NETWORK (RTN) OBSERVATIONS, UTM ZONE 18, NAD83 (2011).

DISTANCES ARE GROUND AND CAN BE CONVERTED TO GRID BY MULTIPLYING BY THE COMBINED SCALE FACTOR OF 0.999974.

FOR BEARING COMPARISONS, A ROTATION OF 1.9477° CLOCKWISE WAS APPLIED TO BEARINGS ON PLAN P1, P2 AND P3 TO ROTATE TO NAD83 UTM 18.

**ELEVATIONS**

ELEVATIONS SHOWN ON THIS PLAN ARE RELATED TO GEOIDIC DATUM (CGD2011) AND ARE DERIVED FROM THE FURNISHED BENCH MARK NO. 00195530238 HAVING A PUBLISHED ELEVATION OF 86.647 METRES.

**LEGEND**

- DENOTES SURVEY MONUMENT FOUND
- DENOTES SURVEY MONUMENT SET
- DENOTES SHORT STANDARD IRON BAR
- DENOTES CONCRETE PIN
- DENOTES PLASTIC BAR
- DENOTES CUT CROSS
- DENOTES CUT CROSS
- DENOTES METRESS
- DENOTES MEASURED
- DENOTES MEASURED
- DENOTES SURVEYORS REAL PROPERTY REPORT BY ANUS, J.D. BARNES LIMITED
- DENOTES OTTAWA, VOLLEBROEK LTD., DATED MAY 30, 2006
- DENOTES ANNE, OTTAWA, VOLLEBROEK LTD.
- DENOTES GAS METER
- DENOTES BOLLARD
- DENOTES BOLLARD
- DENOTES VALVE
- DENOTES UNDERGROUND STORM SEWER
- DENOTES UNDERGROUND WALKING LINE
- DENOTES UNDERGROUND HYDRO LINE
- DENOTES UNDERGROUND FIBRE OPTIC LINE
- DENOTES UNDERGROUND CABLE TELEVISION
- DENOTES FIRE HYDRANT
- DENOTES HYDRO TRANSFORMER
- DENOTES METRE
- DENOTES METRE
- DENOTES DEODOROUS TREE
- DENOTES CONIFEROUS TREE

CONTOUR INTERVALS ARE SHOWN AS 1m FOR ELEVATIONS 5m OR MORE ABOVE FINISH GRADE AND 0.5m FOR ELEVATIONS BELOW FINISH GRADE.

ALL SET POINT MONUMENTS WERE USED DUE TO LACK OF OVERBURDEN AND TO PROVIDE ACCURATE BEARING AND DISTANCE DATA IN ACCORDANCE WITH SECTION 11(4) OF OREG. 325/91.

**SEWER INVERT DATA TABLE**

INVERT	DIRECTION	DIAMETER	INVERT	INVERT ELEVATION	NOTES
CRP1	NE	300	1.87	87.76	88.80
CRP2	S	200	1.86	87.73	88.87
CRP3	SE	200	1.47	88.09	88.62
CRP4	SE	200	1.47	87.66	88.19
CRP5	SW	200	1.47	87.66	88.19
CRP6	SW	200	1.47	87.66	88.19
CRP7	SW	200	1.47	87.66	88.19
CRP8	SW	200	1.47	87.66	88.19
CRP9	SW	200	1.47	87.66	88.19
CRP10	SW	200	1.47	87.66	88.19
CRP11	SW	200	1.47	87.66	88.19
CRP12	SW	200	1.47	87.66	88.19
CRP13	SW	200	1.47	87.66	88.19
CRP14	SW	200	1.47	87.66	88.19
CRP15	SW	200	1.47	87.66	88.19
CRP16	SW	200	1.47	87.66	88.19
CRP17	SW	200	1.47	87.66	88.19
CRP18	SW	200	1.47	87.66	88.19
CRP19	SW	200	1.47	87.66	88.19
CRP20	SW	200	1.47	87.66	88.19

**SEWER INVERT NOTE:**

SEWER INVERT DEPTHS WERE MANUALLY MEASURED FROM THE UGROUPE OF THE OVER EXPOSURE.

ANNOTATIONS DISPLAYED AS \*INDICATED WITH AN ASTERISK HAVE BEEN INTERPOLATED FROM RECORDS AND WERE NOT FIELD VERIFIED BY DIGITE LOCATED LTD.

INVERT DEPTH MEASUREMENTS ARE FROM THE ASSUMED BOTTOM OF THE FACILITY STRUCTURE.

DEPTH MEASUREMENTS ARE NOT SUITABLE FOR EXCAVATION PURPOSES. SEWER NETWORK LOCATIONS WERE SAMPLED WHERE FIELD VERIFICATION WAS CONSIDERED WITH AS-BUILT RECORDS.

WHERE NO DEPTH INFORMATION COULD BE OBTAINED, UTILITIES ARE ASSUMED TO BE AT STANDARD INSTALLATION DEPTH FOR THE SPECIFIC TYPE OF UTILITY.

THE MOST RELIABLE WAY TO PRECISELY DETERMINE THE HORIZONTAL AND VERTICAL LOCATION OF AN UNDERGROUND UTILITY IS THROUGH PROSPECT EXPOSURE USING EXCAVATION TECHNIQUES (COMMONLY PERFORMED WITH HYDRO VACUUM EXCAVATION).

INVERT DEPTH MEASUREMENTS HEREON ARE PROVIDED IN METRES AND CAN BE CONVERTED TO FEET BY DIVIDING BY 0.3048.

**UNDERGROUND UTILITY NOTES**

THE UTILITY DATA SHOWN ON THIS DRAWING WERE ACCURATE IN ACCORDANCE WITH OREG. 325/91, SECTION 11(4) OF OREG. 325/91, AND THE INFORMATION IS SHOWN BY ATTRIBUTED QUALITY LEVELS WHICH ARE DEFINED AS FOLLOWS:

**DATA QUALITY LEVEL**

- HIGHEST QUALITY
- QUALITY LEVEL A
- QUALITY LEVEL B
- QUALITY LEVEL C
- QUALITY LEVEL D
- QUALITY LEVEL E
- LOWEST QUALITY

QUALITY LEVEL "A" - INFORMATION OBTAINED BY ACTUAL PHYSICAL EXPOSURE AND MEASUREMENT OF THE UTILITY OR A PORTION OF THE EXPOSURE.

QUALITY LEVEL "B" - INFORMATION OBTAINED USING GEOPHYSICAL LOCATE POSITION OF THE DESIGNATED UTILITIES.

QUALITY LEVEL "C" - INFORMATION OBTAINED BY SURVEYING AND PLOTTING USING THE INFORMATION FROM THE DESIGNATED UTILITY RECORDS.

QUALITY LEVEL "D" - INFORMATION DERIVED FROM UTILITY RECORDS OR VERBAL COLLECTIONS.

ALL REFERENCES ARE QUALITY OF ANALYSIS NOTED OTHERWISE.

LEVEL "E" RECORD INFORMATION SHOWN ON THIS PLAN HAS BEEN PLOTTED WITHIN THE 1:250 SCALE FOR THE RECORD PURPOSES AND SHOULD NOT BE USED FOR ANY OTHER PURPOSES.

IT IS SUGGESTED THAT LEVEL "E" METHODOLOGIES BE EMPLOYED.

LOC. SYMBOL - DENOTES A POINT WHERE O.G. METHODS COULD NO LONGER ASCERTAIN THE HORIZONTAL POSITION OF A FACILITY.

QUALITY LEVEL "F" INFORMATION COMPILED FROM RECORDS PROVIDED BY CITY OF OTTAWA FILE NAME 23-0774\_020\_1000\_000000.

**CAUTION: CALL BEFORE YOU DIG**

THIS PLAN IS INTENDED FOR DESIGN PURPOSES ONLY. OTHER BURIED UTILITIES MAY EXIST WHICH ARE NOT SHOWN ON THIS PLAN. FOR INFORMATION OF THE PROPERTY OWNER, CONTACT THE UTILITY OWNERS OF UNDERGROUND UTILITIES PRIOR TO ANY EXCAVATION WORK TO ENSURE THE APPROPRIATE LEGAL REQUIREMENTS ARE MET.

**SURVEYOR'S CERTIFICATE**

I CERTIFY THAT:

- THIS SURVEY AND PLAN ARE CORRECT AND IN ACCORDANCE WITH THE SURVEY ACT, THE SURVEYORS ACT AND THE REGULATIONS MADE UNDER THEM.
- THE SURVEY WAS COMPLETED ON JUNE 5, 2023.

JUNE 13, 2023  
 DATE

OTARIO LAND SURVEYOR

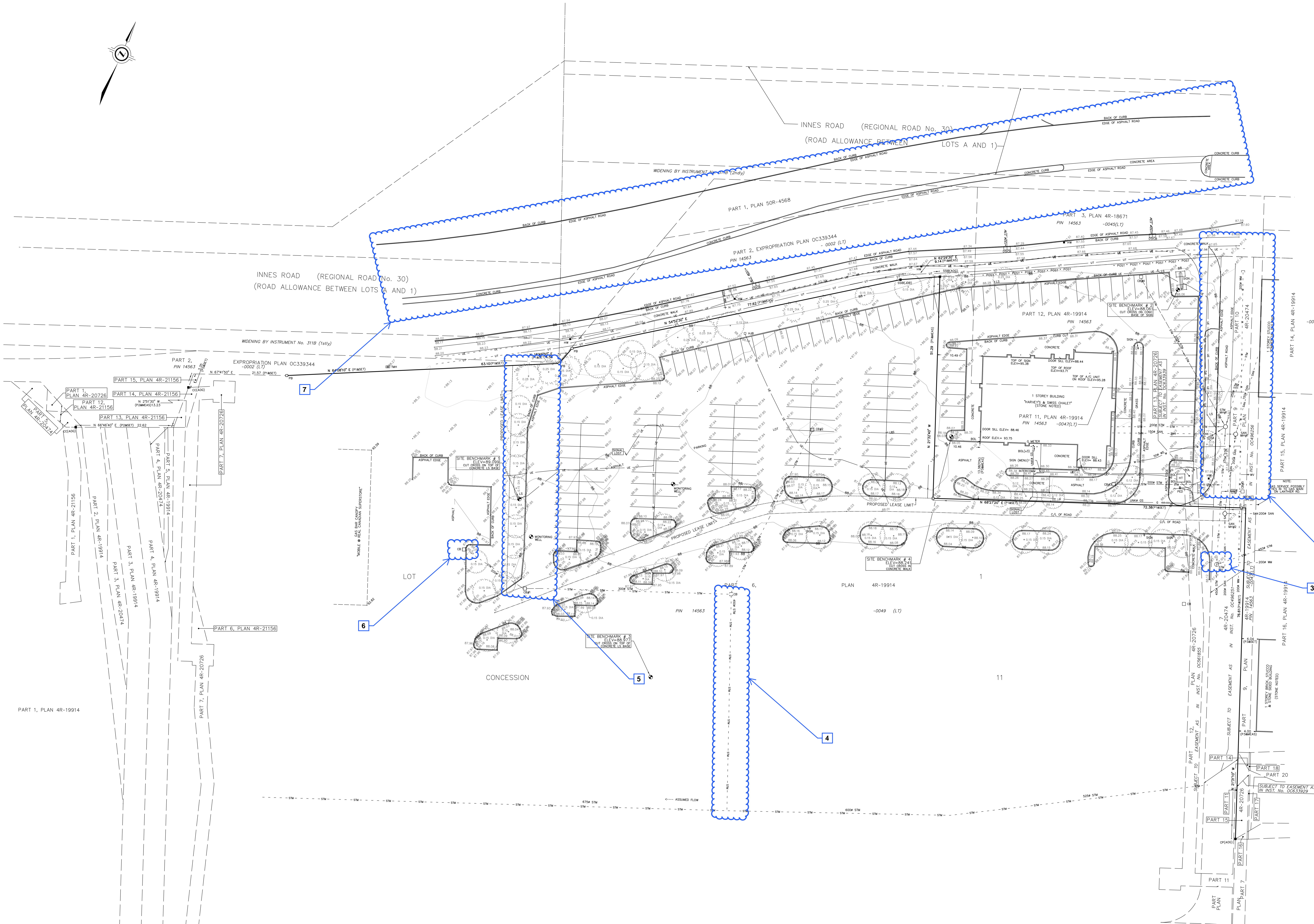
THIS PLAN OF SURVEY RELATES TO AOLS PLAN SUBMISSION FORM NUMBER V-42142.

SUBSURFACE UTILITY FIELD WORK WAS COMPLETED ON THE 30TH DAY OF MAY, 2023.

**J.D. BARNES** SURVEYING & MAPPING  
 LAND INFORMATION SPECIALISTS

ESTABLISHED 1976, 5555 BELLAIR AVENUE, SUITE 100, OTTAWA, ONTARIO, CANADA  
 T4R 1S1 (416) 753-7284 F (416) 753-4400 www.jdbarnes.com

DRAWN BY: CE CHECKED BY: SL REFERENCE NO.: 23-10-038-00  
 PLOTTED: 28/06/2023 DATE: 06/12/23



REVISION 1 (2023/06/28): OPPOSITE AND CENTRAL CURBS ON INNES RD ADDED. UNDERGROUND UTILITIES AND SEWER INVERT DATA TABLE HAVE BEEN UPDATED.