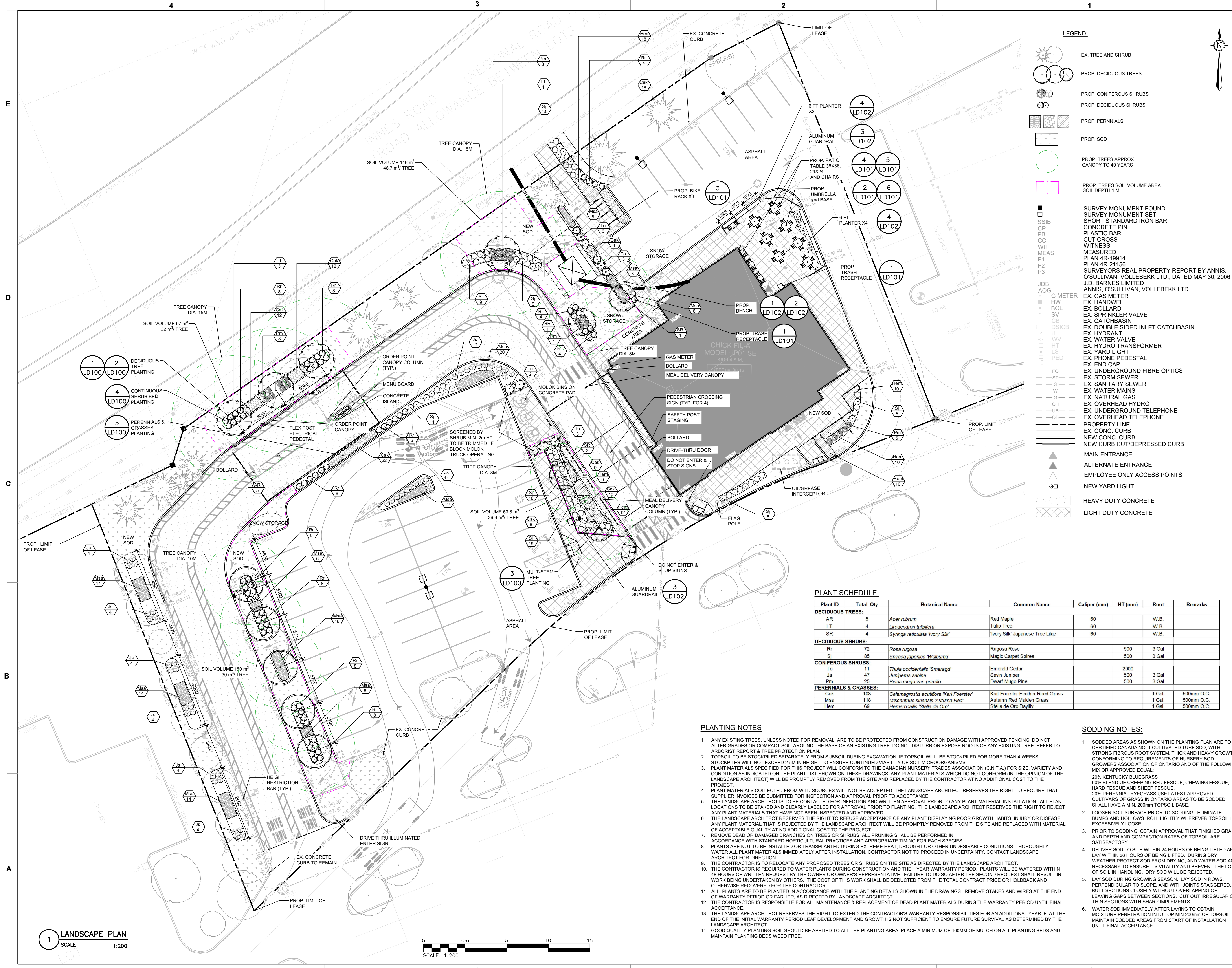


E:\BIM\BIM-230202042-H0160 Execution\65 Drawings\230202042-H0-L-100-RB.dwg  
4 October 2024



**LEGEND:**

- EX. TREE AND SHRUB
- PROP. DECIDUOUS TREES
- PROP. CONIFEROUS TREES
- PROP. DECIDUOUS SHRUBS
- PROP. PERENNIALS
- PROP. SOD
- PROP. TREES APPROX. CANOPY TO 40 YEARS
- PROP. TREES SOIL VOLUME AREA SOIL DEPTH 1 M
- SURVEY MONUMENT FOUND
- SURVEY MONUMENT SET
- SHORT STANDARD IRON BAR
- CONCRETE PIN
- PLASTIC BAR
- CUT CROSS
- WITNESS
- MEAS P1
- P2
- P3
- JDB
- AOG
- G METER
- HW
- BOL
- SV
- CB
- DSICB
- H
- WW
- LS
- PED
- FO
- ST
- S
- W
- G
- OH
- EX. OVERHEAD HYDRO
- EX. UNDERGROUND TELEPHONE
- EX. OVERHEAD TELEPHONE
- PROPERTY LINE
- EX. CONC. CURB
- NEW CONC. CURB
- NEW CURB CUT/DEPRESSED CURB
- MAIN ENTRANCE
- ALTERNATE ENTRANCE
- EMPLOYEE ONLY ACCESS POINTS
- NEW YARD LIGHT
- HEAVY DUTY CONCRETE
- LIGHT DUTY CONCRETE

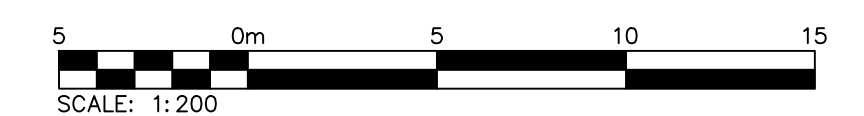
**PLANT SCHEDULE:**

Plant ID	Total Qty	Botanical Name	Common Name	Caliper (mm)	HT (mm)	Root	Remarks
<b>DECIDUOUS TREES:</b>							
AR	5	<i>Acer rubrum</i>	Red Maple	60		W.B.	
LT	4	<i>Liriodendron tulipifera</i>	Tulip Tree	60		W.B.	
SR	4	<i>Syringa reticulata 'Ivory Silk'</i>	Ivory Silk Japanese Tree Lilac	60		W.B.	
<b>DECIDUOUS SHRUBS:</b>							
Rr	72	<i>Rosa rugosa</i>	Rugosa Rose		500	3 Gal	
Sj	85	<i>Spiraea japonica 'Walburna'</i>	Magic Carpet Spirea		500	3 Gal	
<b>CONIFEROUS SHRUBS:</b>							
Tt	11	<i>Thuja occidentalis 'Smeragd'</i>	Emerald Cedar		2000		
Js	47	<i>Juniperus sabinia</i>	Savin Juniper		500	3 Gal	
Pm	25	<i>Pinus mugo var. pumilio</i>	Dwarf Mugo Pine		500	3 Gal	
<b>PERENNIALS &amp; GRASSES:</b>							
Cak	103	<i>Calamagrostis acutiflora 'Karl Foerster'</i>	Karl Foerster Feather Reed Grass		1 Gal	500mm O.C.	
Msa	118	<i>Miscanthus sinensis 'Autumn Red'</i>	Autumn Red Maiden Grass		1 Gal	500mm O.C.	
Hem	69	<i>Hemerocallis 'Stella de Oro'</i>	Stella de Oro Daylily		1 Gal	500mm O.C.	

- PLANTING NOTES:**
- ANY EXISTING TREES, UNLESS NOTED FOR REMOVAL, ARE TO BE PROTECTED FROM CONSTRUCTION DAMAGE WITH APPROVED FENCING. DO NOT ALTER GRADES OR COMPACT SOIL AROUND THE BASE OF AN EXISTING TREE. DO NOT DISTURB OR EXPOSE ROOTS OF ANY EXISTING TREE. REFER TO ARBORIST REPORT & TREE PROTECTION PLAN.
  - TOPSOIL TO BE STOCKPILED SEPARATELY FROM SUBSOIL DURING EXCAVATION. IF TOPSOIL WILL BE STOCKPILED FOR MORE THAN 4 WEEKS, STOCKPILES WILL NOT EXCEED 2.5M IN HEIGHT TO ENSURE CONTINUED VIABILITY OF SOIL MICROORGANISMS.
  - PLANT MATERIALS SPECIFIED FOR THIS PROJECT WILL CONFORM TO THE CANADIAN NURSERY TRADES ASSOCIATION (C.N.T.A.) FOR SIZE, VARIETY AND CONDITION AS INDICATED ON THE PLANT LIST SHOWN ON THESE DRAWINGS. ANY PLANT MATERIALS WHICH DO NOT CONFORM (IN THE OPINION OF THE LANDSCAPE ARCHITECT) WILL BE PROMPTLY REMOVED FROM THE SITE AND REPLACED BY THE CONTRACTOR AT NO ADDITIONAL COST TO THE PROJECT.
  - PLANT MATERIALS COLLECTED FROM WILD SOURCES WILL NOT BE ACCEPTED. THE LANDSCAPE ARCHITECT RESERVES THE RIGHT TO REQUIRE THAT SUPPLIER INVOICES BE SUBMITTED FOR INSPECTION AND APPROVAL PRIOR TO ACCEPTANCE.
  - THE LANDSCAPE ARCHITECT RESERVES THE RIGHT TO REFUSE ACCEPTANCE OF ANY PLANT MATERIAL INSTALLATION. ALL PLANT LOCATIONS TO BE STAKED AND CLEARLY LABELED FOR APPROVAL PRIOR TO PLANTING. THE LANDSCAPE ARCHITECT RESERVES THE RIGHT TO REJECT ANY PLANT MATERIALS THAT HAVE NOT BEEN INSPECTED AND APPROVED.
  - THE LANDSCAPE ARCHITECT RESERVES THE RIGHT TO REFUSE ACCEPTANCE OF ANY PLANT DISPLAYING POOR GROWTH HABITS, INJURY OR DISEASE. ANY PLANT MATERIAL THAT IS REJECTED BY THE LANDSCAPE ARCHITECT WILL BE PROMPTLY REMOVED FROM THE SITE AND REPLACED WITH MATERIAL OF ACCEPTABLE QUALITY AT NO ADDITIONAL COST TO THE PROJECT.
  - REMOVE DEAD OR DAMAGED BRANCHES ON TREES OR SHRUBS. ALL PRUNING SHALL BE PERFORMED IN ACCORDANCE WITH STANDARD HORTICULTURAL PRACTICES AND APPROPRIATE TIMING FOR EACH SPECIES.
  - PLANTS ARE NOT TO BE INSTALLED OR TRANSPLANTED DURING EXTREME HEAT, DROUGHT OR OTHER UNDESIRABLE CONDITIONS. THOROUGHLY WATER ALL PLANT MATERIALS IMMEDIATELY AFTER INSTALLATION. CONTRACTOR NOT TO PROCEED IN UNCERTAINTY. CONTACT LANDSCAPE ARCHITECT FOR DIRECTION.
  - THE CONTRACTOR IS TO RELOCATE ANY PROPOSED TREES OR SHRUBS ON THE SITE AS DIRECTED BY THE LANDSCAPE ARCHITECT.
  - THE CONTRACTOR IS REQUIRED TO WATER PLANTS DURING CONSTRUCTION AND THE 1 YEAR WARRANTY PERIOD. PLANTS WILL BE WATERED WITHIN 48 HOURS OF WRITTEN REQUEST BY THE OWNER OR OWNER'S REPRESENTATIVE. FAILURE TO DO SO AFTER THE SECOND REQUEST SHALL RESULT IN WORK BEING UNDERTAKEN BY OTHERS. THE COST OF THIS WORK SHALL BE DEDUCTED FROM THE TOTAL CONTRACT PRICE OR HOLDBACK AND OTHERWISE RECOVERED FOR THE CONTRACTOR.
  - ALL PLANTS ARE TO BE PLANTED IN ACCORDANCE WITH THE PLANTING DETAILS SHOWN IN THE DRAWINGS. REMOVE STAKES AND WIRES AT THE END OF WARRANTY PERIOD OR EARLIER, AS DIRECTED BY LANDSCAPE ARCHITECT.
  - THE CONTRACTOR IS RESPONSIBLE FOR ALL MAINTENANCE & REPLACEMENT OF DEAD PLANT MATERIALS DURING THE WARRANTY PERIOD UNTIL FINAL ACCEPTANCE.
  - THE LANDSCAPE ARCHITECT RESERVES THE RIGHT TO EXTEND THE CONTRACTOR'S WARRANTY RESPONSIBILITIES FOR AN ADDITIONAL YEAR IF, AT THE END OF THE INITIAL WARRANTY PERIOD LEAF DEVELOPMENT AND GROWTH IS NOT SUFFICIENT TO ENSURE FUTURE SURVIVAL AS DETERMINED BY THE LANDSCAPE ARCHITECT.
  - GOOD QUALITY PLANTING SOIL SHOULD BE APPLIED TO ALL THE PLANTING AREA. PLACE A MINIMUM OF 100MM OF MULCH ON ALL PLANTING BEDS AND MAINTAIN PLANTING BEDS WEED FREE.

- SODDING NOTES:**
- SODDED AREAS AS SHOWN ON THE PLANTING PLAN ARE TO BE CERTIFIED CANADA NO. 1 CULTIVATED TURF SOD, WITH STRONG FIBROUS ROOT SYSTEM, THICK AND HEAVY GROWTH CONFORMING TO REQUIREMENTS OF NURSERY SOD GROWERS ASSOCIATION OF ONTARIO AND OF THE FOLLOWING MIX OR APPROVED EQUAL:  
20% KENTUCKY BLUEGRASS  
60% BLEND OF CREEPING RED FESCUE, CHEWING FESCUE, HARD FESCUE AND SHEEP FESCUE.  
20% PERENNIAL RYEGRASS USE LATEST APPROVED CULTIVARS OF GRASS IN ONTARIO AREAS TO BE SODDED SHALL HAVE A MIN. 200mm TOPSOIL BASE.
  - LOOSEN SOIL SURFACE PRIOR TO SODDING. ELIMINATE BUMPS AND HOLLOWES. ROLL LIGHTLY WHEREVER TOPSOIL IS EXCESSIVELY LOOSE.
  - PRIOR TO SODDING, OBTAIN APPROVAL THAT FINISHED GRADE AND DEPTH AND COMPACTATION RATES OF TOPSOIL ARE SATISFACTORY.
  - DELIVER SOD TO SITE WITHIN 24 HOURS OF BEING LIFTED AND LAY WITHIN 36 HOURS OF BEING LIFTED. DURING DRY WEATHER PROTECT SOD FROM DRYING, AND WATER SOD AS NECESSARY TO ENSURE ITS VITALITY AND PREVENT THE LOSS OF SOIL IN HANDLING. DRY SOD WILL BE REJECTED.
  - LAY SOD DURING GROWING SEASON. LAY SOD IN ROWS, PERPENDICULAR TO SLOPE, AND WITH JOINTS STAGGERED. BUTT SECTIONS CLOSELY WITHOUT OVERLAPPING OR LEAVING GAPS BETWEEN SECTIONS. CUT OUT IRREGULAR OR THIN SECTIONS WITH SHARP IMPLEMENTS.
  - WATER SOD IMMEDIATELY AFTER LAYING TO OBTAIN MOISTURE PENETRATION INTO TOP MIN 200mm OF TOPSOIL. MAINTAIN SODDED AREAS FROM START OF INSTALLATION UNTIL FINAL ACCEPTANCE.

**1 LANDSCAPE PLAN**  
SCALE 1:200



**Chick-fil-A**  
5200 Buffington Road  
Atlanta, Georgia 30349-2998

exp Services Inc.  
T: +1.905.793.9800 | F: +1.905.793.0641  
1595 Clark Boulevard  
Brampton, ON L6T 4V1  
Canada  
www.exp.com



- BUILDINGS • EARTH & ENVIRONMENT • ENERGY •
- INDUSTRIAL • INFRASTRUCTURE • SUSTAINABILITY

**CHICK-FIL-A**  
**ORLEANS**  
4270 Innes Road  
Ottawa, ON

**FSR#30038**

BUILDING TYPE / SIZE: IP01 SE  
RELEASE: XXXXXXXX  
**REVISION SCHEDULE**  
NO. DATE DESCRIPTION  
A 2024-10-04 ISSUED FOR SPA

**Issued for SPA**

CONSULTANT PROJECT # BLM0023002042-H0  
PROJECT STATUS SPA  
DATE MAY 2023  
DRAWN BY L.Z.

Information contained on this drawing and in all digital files produced for above named project may not be reproduced in any manner without express written or verbal consent from authorized project representatives.  
SHEET  
LANDSCAPE PLAN  
SHEET NUMBER  
**L100**