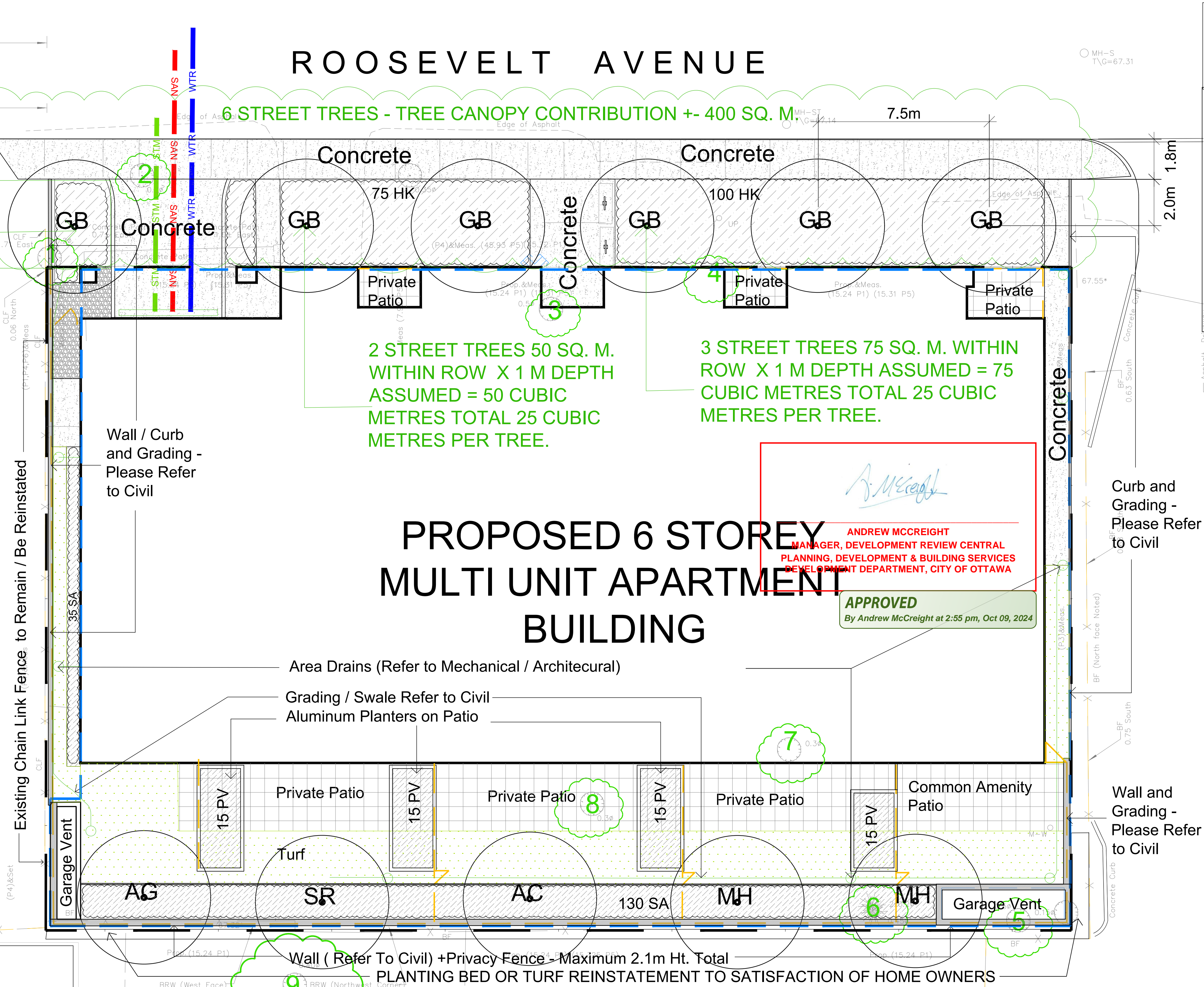


1 STREET TREE 25 SQ. M. WITHIN ROW X 1 M DEPTH ASSUMED = 25 CUBIC METRES. (15 OF THE 25 Provided by 396 Roosevelt

CONCRETE AND PLANTING DETAILS WITHIN THE CITY ROW TO MEET OR EXCEED CITY STANDARD DETAILS SC2 Monolithic Curb and Sidewalk, L3 Planting Pit, L4 Shrub Bed, L5 Continuous Planting Bed AS REQUESTED BY THE CITY OF OTTAWA



Drawing Remains the Property of/Copyright Reserved by GJA INC. Do Not Use or Reproduce Without Approval of GJA INC. NOT To Be Used For Construction Unless Indicated by Revision: **FOR LANDSCAPE CONSTRUCTION**. Contractor is Responsible for Verification of Site Locations of all Utilities. Report any Discrepancies Between Site and Drawing Immediately to GJA INC. Do NOT Proceed Until Clarified.

PLANTING MIX TO BE APPROVED BY LANDSCAPE ARCHITECT | PLANT MATERIAL TO MEET CNLA STANDARDS/BE APPROVED BY LANDSCAPE ARCHITECT PRIOR TO PLANTING | ALL MATERIALS & WORK TO BE MAINTAINED UNTIL FINAL ACCEPTANCE & INCLUDE 1 YEAR WARRANTY FROM DATE OF FINAL ACCEPTANCE | PROVIDE WATERING OF ALL PLANT MATERIAL AS REQUIRED FOR PROPER ESTABLISHMENT UNTIL END OF WARRANTY PERIOD | REFER TO CIVIL ENGINEER'S DRAWING FOR ELEVATIONS / GRADING | The Landscape Plan is to be read in conjunction with the grading, servicing, site and survey plan | Bare root material to be planted in season only | All plant material locations to be staked on site by the landscape contractor and checked by the landscape architect prior to planting | All trees to be preserved on or directly adjacent to the site will be protected | Plant material are to be installed a minimum of: 3.0m away from any part of any hydro transformer, 3.0m corridor between a fire hydrant and the curb, a 2.5m radius beside or behind a fire hydrant, 2.0m from any servicing/utility line or structure |

- LANDSCAPE PLAN LEGEND**
- Proposed Pedestrian Pavement
 - Proposed Concrete Pavement
 - Proposed Deciduous Tree
 - Proposed Planting Bed
 - Proposed Riverwash Stone On Filter Cloth
 - Proposed Custom Aluminum Privacy Screen
 - BELOW GRADE SERVICES REFER TO CIVIL /CUP
 - U/W Water Service
 - U/W Storm Service
 - U/W Sanitary Service
 - FD Siamese Connection REFER TO TCR BY IFS
 - Existing Tree - Refer TO TCR by IFS for Details/Actions

#	Revision	Date
11	REVISED PER CITY COMMENTS	2024 09 16
10	PHASE 3 PRE CONSULT RESPONSE	2024 07 29
9	PHASE 3 PRE CONSULT RESPONSE	2024 06 18
8	REVISED SITE/GROUND FLOOR PLAN	2024 05 01
7	CITY ROW DETAILS ADDED	JUNE 29 2022
6	FOR BUILDING PERMIT	JUNE 10 2022
5	SITE PLAN CONTROL SUBMISSION 4	MAY 12 2022
4	FOR TENDER REVIEW	APRIL 27 2022
3	SITE PLAN CONTROL SUBMISSION 3	MARCH 31 2022
2	SITE PLAN CONTROL SUBMISSION 2	JANUARY 17 2022
1	SITE PLAN CONTROL SUBMISSION 1	DECEMBER 10 2021
0	REVIEW/COORDINATION	NOVEMBER 2021

TREE SCHEDULE 398 ROOSEVELT

CODE	QUANTITY	BOTANICAL NAME	COMMON NAME	B&B SPECIMEN	SPREAD	NATIVE
AG	1	Aesculus glabra	Ohio Buckeye	50mm cal	10M	YES
AC	1	Amelanchier canadensis	Tree Serviceberry	50mm cal	6M	YES
GB	0	Ginkgo biloba	Maidenhair Tree	50mm cal	12M	
MH	2	Malus 'Harvest Gold'	Harvest Gold Crabapple	50mm cal	5M	
SR	1	Syringa reticulata	Japanese Tree Lilac	50mm cal	6M	
TOTALS	5	6				

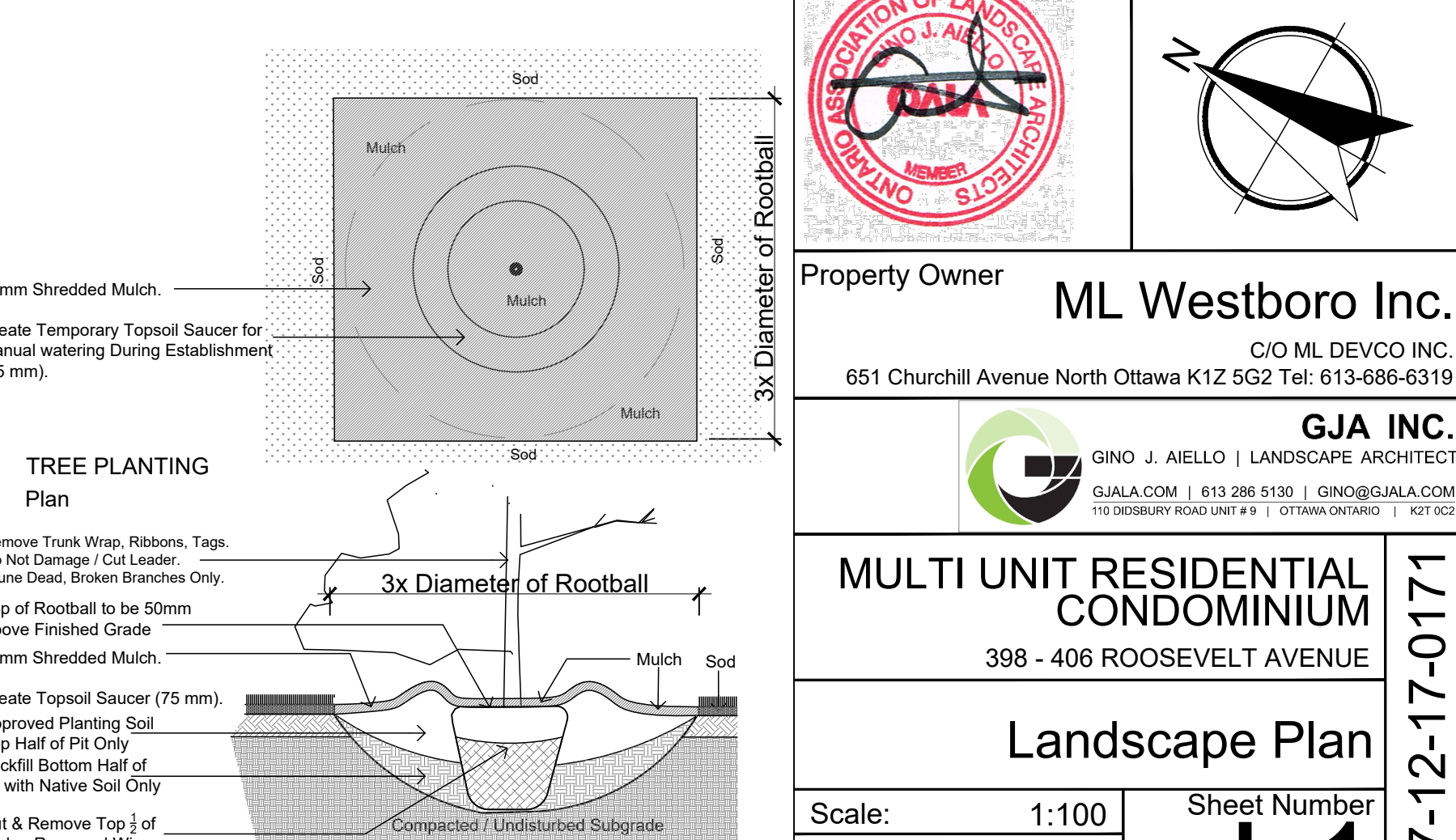
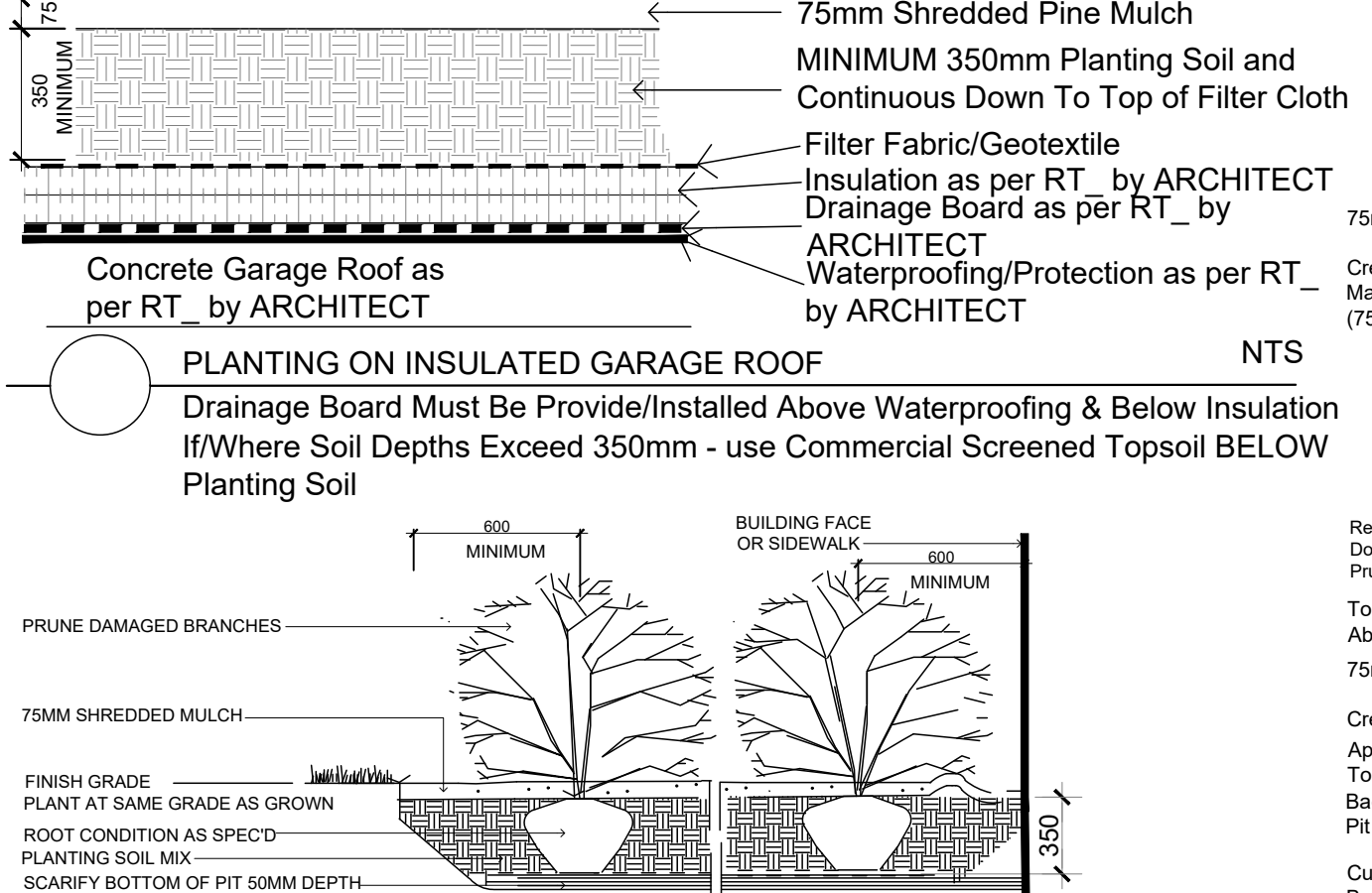
SHRUBS - 398-406 ROOSEVELT

Code	Qty.	Botanical Name	Common Name	Size	Condition
HK	175	Hypericum kalmianum	St. John's Wort	40cm Ht.	Pot
SA	165	Spiraea alba	Meadowsweet	60cm Ht.	Pot
PV	75	Panicum virgatum	Switch Grass	9cm Pot	

PERENNIALS GROUNDCOVERS ORNAMENTAL GRASS 398-406 ROOSEVELT THE WESTMOUNT

Code	Qty.	Botanical Name	Common Name	Condition
25	Hypericum kalmianum	St. John's Wort	40cm Ht.	Pot
15	Spiraea alba	Meadowsweet	60cm Ht.	Pot
50	Calamagrostis acutiflora 'Overdam'	Feather Reed Grass	9cm Pot	
250	Geranium macrorrhizum	Bigroot Geranium	9cm Pot	
250	Geranium psilostemon 'Gerwat'	Rozanne Geranium	9cm Pot	
50	Parthenocissus tricuspidata	Boston Ivy	9cm Pot	
50	Panicum virgatum	Switch Grass	9cm Pot	

Ensure Filter Fabric is in Place over Insulation, with 500mm Overlap at Seams, and Continuous up and over any Upstands, Drains etc. Notify GJA INC. When Fabric Placement is Ready For Inspection Prior To ANY Soil Placement.



Property Owner
 ML Westboro Inc.
 C/O ML DEVCO INC.
 651 Churchhill Avenue North Ottawa K1Z 5G2 Tel: 613-686-6319

GJA INC.
 GJALA.COM | 613 286 5130 | GJALOGJALA.COM
 115 DOBRYNIA ROAD UNIT # 8 | OTTAWA, ONTARIO | K1T 0G2

MULTI UNIT RESIDENTIAL CONDOMINIUM
 398 - 406 ROOSEVELT AVENUE

Landscape Plan

Scale: 1:100
 City of Ottawa
 Dwg - 18647

Sheet Number
L1
 D07-12-17-0171