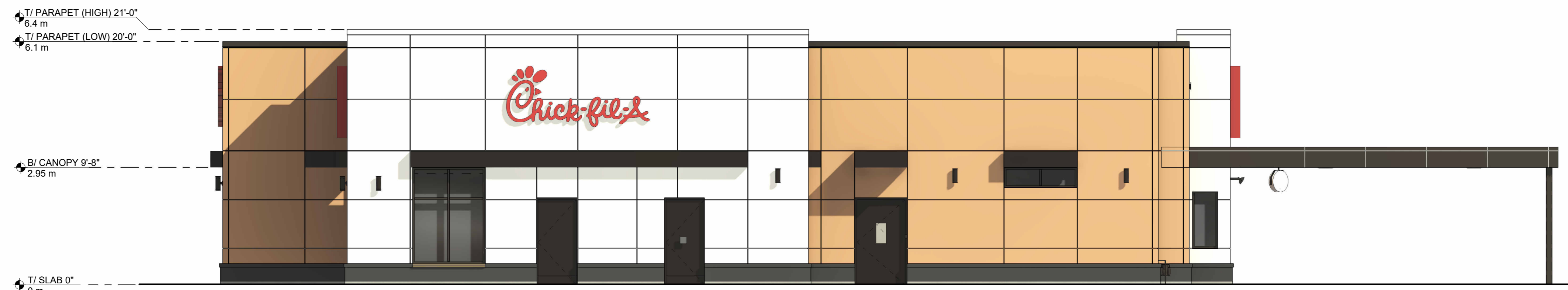


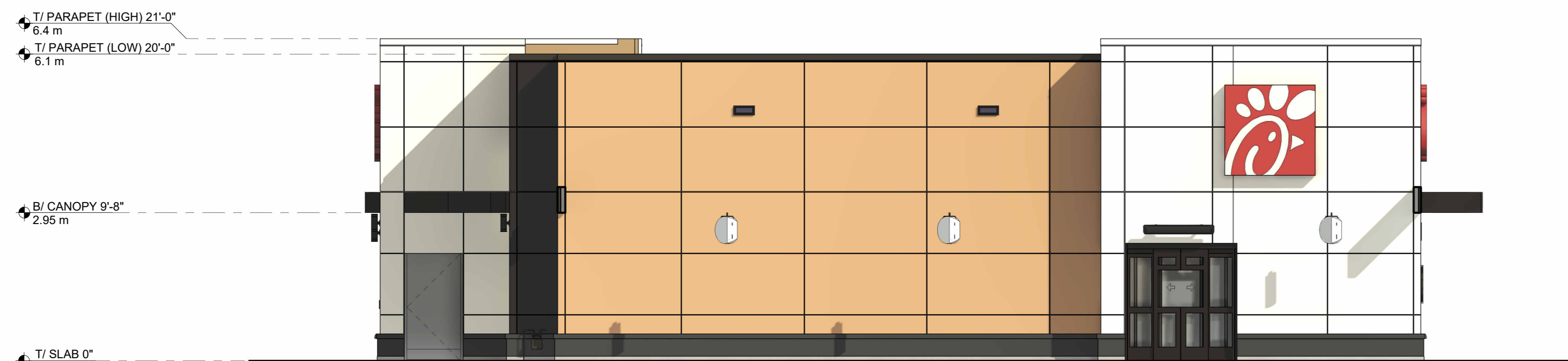
2024-10-04 9:41:00 AM C:\Users\ashelk\Documents\00000\_NewStore\_SE\_ARC\_CA\_kris.kirkpatrick\SSPHM\_Ashelk\HMSFCF.rvt  
SE-30042-SPA-2-EXTERIOR ELEVATIONS



4 EXTERIOR ELEVATION - NORTH  
1:70



3 EXTERIOR ELEVATION - EAST  
1:70



2 EXTERIOR ELEVATION - WEST  
1:70



1 EXTERIOR ELEVATION - SOUTH  
1:70

EXTERIOR FINISHES

 ACM-1 SOLID COLORED PANEL COLOR: JBR BRONZE	 ACM-3 SOLID COLORED PANEL COLOR: QBV ORIENTAL CANE
 ACM-2 SOLID COLORED PANEL COLOR: BNT BONE WHITE	 ACM-4 SOLID COLORED PANEL (ALTERNATE) COLOR: ZEBRAWOOD
 EC-1 PREFINISHED METAL COPING COLOR: MIDNIGHT BRONZE	 EXTERIOR PAINT COLOR: IRON GATE FINISH: SEMI-GLOSS
 ST-1 STOREFRONT COLOR: DARK BRONZE	



Chick-fil-A

Chick-fil-A  
5200 Buffington Road  
Atlanta, Georgia  
30349-2998

PETROFF PARTNERSHIP ARCHITECTS  
**PETROFF**

260 TOWN CENTRE BLVD. SUITE 300  
MARKHAM ONTARIO CANADA L3R 9H5  
TEL. 905.470.7000. FAX. 905.470.2500

**CHICK-FIL-A**  
**ORLEANS**

4270 Innes Road  
Ottawa, ON, K4A 5E6

**FSR#30042**

BUILDING TYPE / SIZE: IP01 SE  
RELEASE: 24.05  
PRINTED FOR

PROJECT STATUS

REVISION SCHEDULE		
NO.	DATE	DESCRIPTION
1	2024-08-20	ISSUED FOR SPA

CONSULTANT PROJECT #	####
DATE	08/20/24
DRAWN BY	AS

Information contained on this drawing and in all digital files produced for above named project may not be reproduced in any manner without express written or verbal consent from authorized project representatives.

SHEET  
EXTERIOR ELEVATIONS

SHEET NUMBER

**SPA-2**