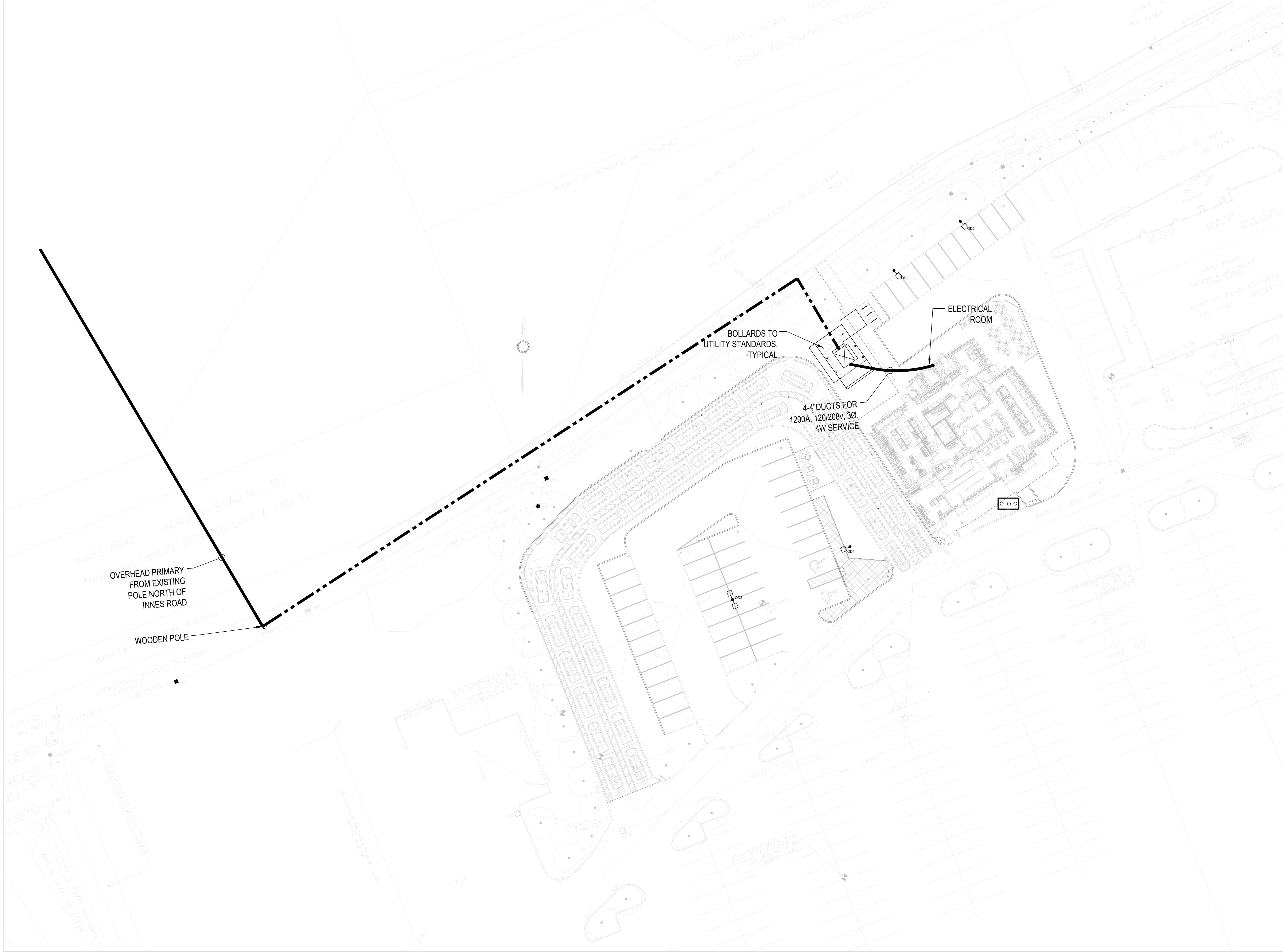


DO NOT SCALE DRAWINGS. OBTAIN INFORMATION INVOLVING ACCURATE DIMENSIONS TO STRUCTURE FROM DIMENSIONS SHOWN ON ARCHITECTURAL AND STRUCTURAL DRAWINGS, OR BY SITE MEASUREMENTS. SITE PLAN LAYOUT TO BE OBTAINED FROM ARCHITECT OR CIVIL ENGINEER. CONSULT GENERAL CONSTRUCTION DRAWINGS AS WELL AS DETAIL DRAWINGS TO BECOME FAMILIAR WITH ALL CONDITIONS AFFECTING THE WORK, AND VERIFY SPACES IN WHICH THE WORK WILL BE INSTALLED.

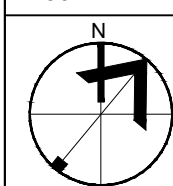


#	DATE	DESCRIPTION	BY
1	2024-05-09	ISSUED FOR REVIEW	MR
2	2024-09-25	ISSUED FOR SPA	MR

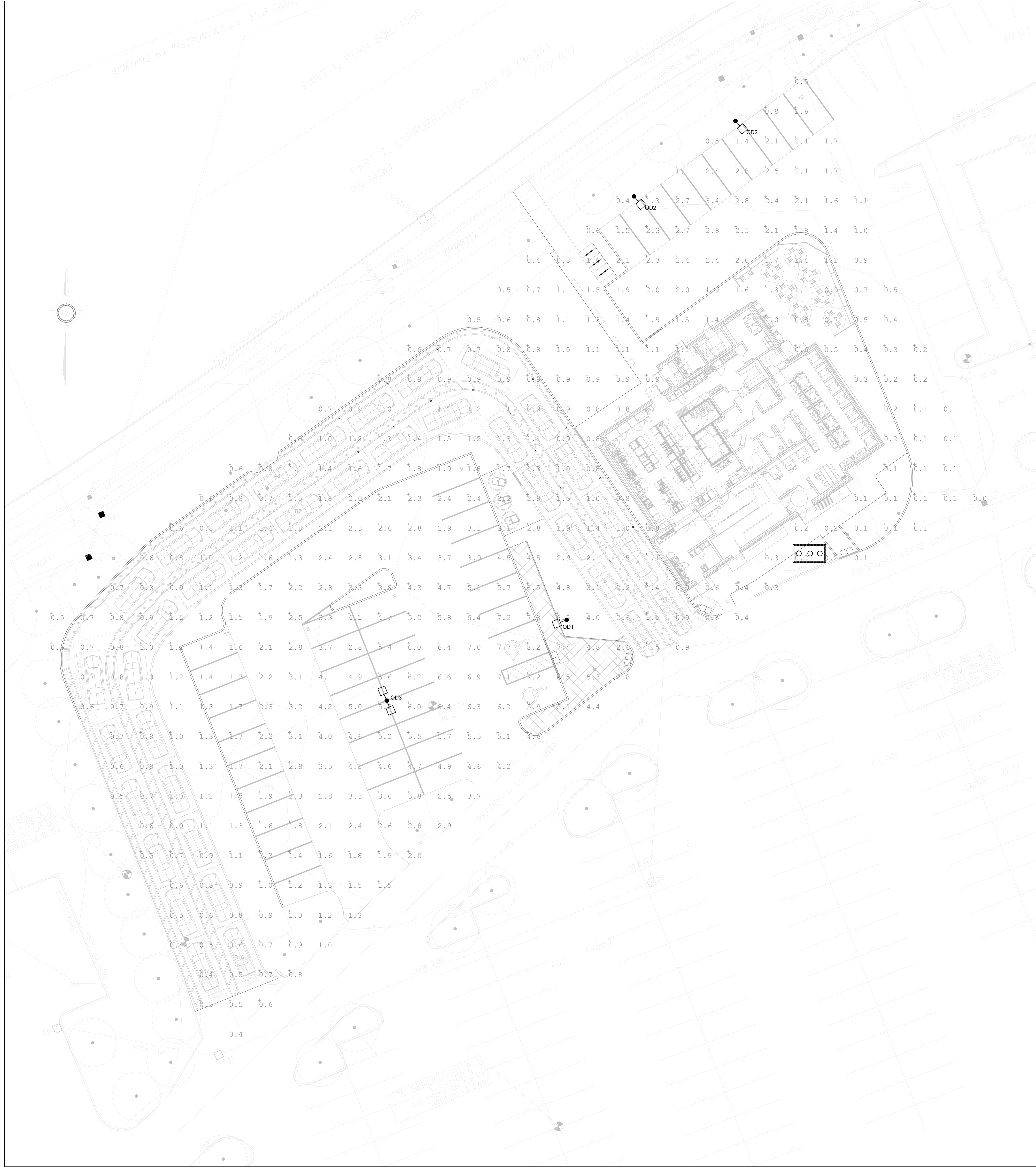
PROJECT
**CHICK-FIL-A
 ORLEANS - 4270 INNES ROAD,
 OTTAWA, ONTARIO**

DRAWING
ELECTRICAL SITE PLAN

PROJECT NO.
24-002-005
 PROJECT DATE
MAY 2024
 DRAWN BY
U.N.
 CHECKED BY
M.R.
 SCALE
1:250



DRAWING NO.
E1.1

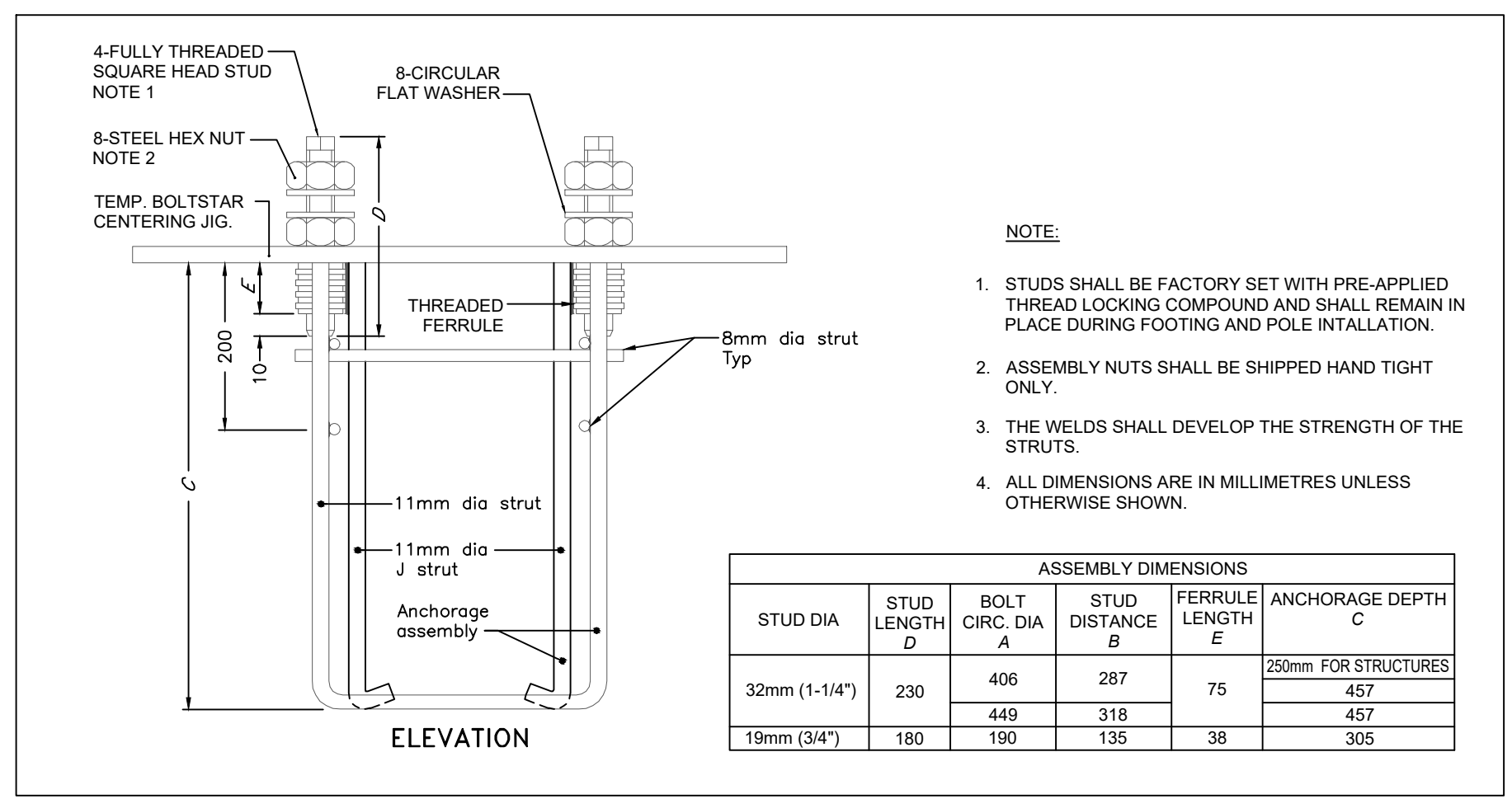


LUMINAIRE SCHEDULE

TYPE	DESCRIPTION	LUMENS	WATTAGE	LLF
001	POLE MOUNTED LED LUMINAIRE. LUMINAIRE TO BE C/W TYPE 3 MEDIUM DISTRIBUTION, 70CRI, 3000°K, AND TO OPERATE AT 120V. LIGHTING TO BE MOUNTED AT 30'-0" A.F.F. C/W 27'-0" HIGH AND 5'Ø POLE. POLE TO BE ROUND STEEL TYPE. SIGNIFY GARCCO - OPF-L-A16-73U 0-T3M-120 BUG RATING: B1-U0-G2	35717	194.62	0.9
002	POLE MOUNTED LED LUMINAIRE. LUMINAIRE TO BE C/W BACK LIGHT CONTROL, 70CRI, 3000°K, AND TO OPERATE AT 120V. LIGHTING TO BE MOUNTED AT 30'-0" A.F.F. C/W 27'-0" HIGH AND 5'Ø POLE. POLE TO BE ROUND STEEL TYPE. SIGNIFY GARCCO - OPF-M-A08-730-BLC-120 BUG RATING: B3-U0-G2	9578	74.41	0.9
003	BACK-BACK POLE MOUNTED (@180) LED LUMINAIRE. LUMINAIRE TO BE C/W TYPE 5 WIDE DISTRIBUTION, 70CRI, 3000°K, AND TO OPERATE AT 120V. LIGHTING TO BE MOUNTED AT 30'-0" A.F.F. C/W 27'-0" HIGH AND 5'Ø POLE. POLE TO BE ROUND STEEL TYPE. SIGNIFY GARCCO - OPF-L-A16-730-T5W-120 BUG RATING: B4-U0-G2	35669	194.62	0.9

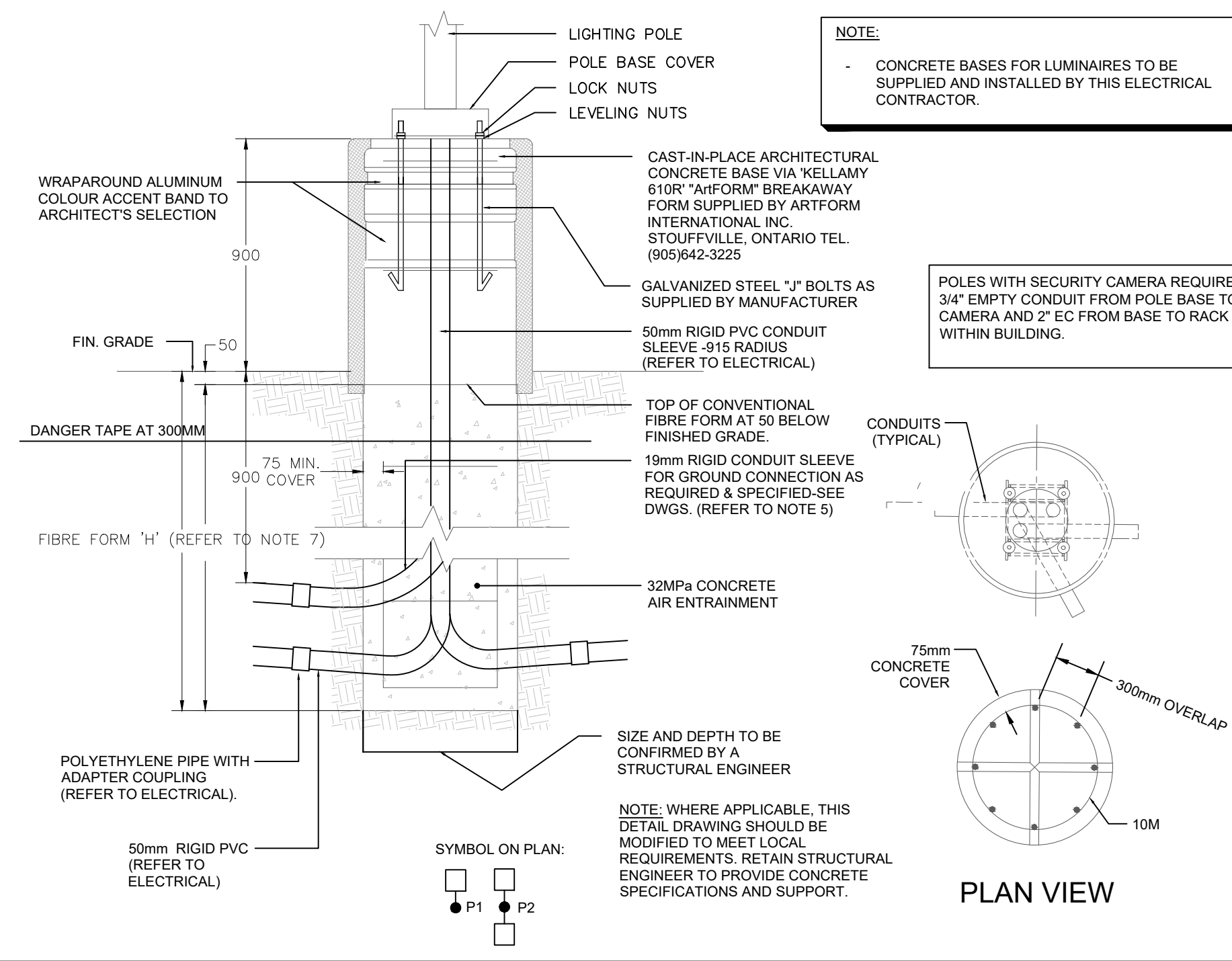
Calculation Summary

Label	CalcType	Units	Avg	Max	Min	Avg/Min	Max/Min
HANDICAP PARKING	Illuminance	Fc	6.75	8.2	5.1	1.32	1.60
DRIVE-THRU	Illuminance	Fc	1.06	3.1	0.3	3.53	10.33
PARKING LOTS	Illuminance	Fc	3.69	8.2	1.2	3.08	6.83



- NOTES:**
- ALL DIMENSIONS ARE IN MILLIMETRES OR METRES.
 - CLASS OF CONCRETE SHALL BE 32MPa AIR ENTRAINMENT.
 - MINIMUM OF TWO SLEEVES REQUIRED FOR EACH CONC. FOUNDATION UNLESS OTHERWISE SHOWN.
 - CONTRACTOR TO VERIFY OPENING SIZE IN POLE BASE PLATE PRIOR TO SETTING CONDUIT SLEEVES. CONTRACTOR TO PROVIDE STRUCTURAL ENGINEER APPROVAL FOR BASE DESIGN.
 - SUBJECT TO SOIL CONDITIONS, REFER TO SOIL REPORT.
 - FORM RELEASE AGENT HAS BEEN FACTORY-APPLIED TO INSIDE SURFACE OF "A"FORM".

POLE LENGTH m	BURIAL DEPTH H m	ROD LENGTH m	A mm	NO. OF 10M TIES @450mm C/C	BOLT CIRCLE DIA FOR METAL POLES		
					ALUMINUM	STEEL	SECTIONAL STEEL
5.6	2.15	2.00	100	3	N/A	N/A	449
7.0	2.15	2.00	100	3	N/A	N/A	449
7.5	2.15	2.00	100	3	406	406	N/A
8.7	2.45	2.30	250	3	N/A	N/A	449
9.0	2.45	2.30	0	4	406	406	N/A
10.5	2.60	2.45	100	4	406	406	449
12.0	2.75	2.60	150	4	406	406	N/A
13.6	2.90	2.75	0	5	406	406	N/A
15.1	3.05	2.90	100	5	406	406	N/A



DO NOT SCALE DRAWINGS. OBTAIN INFORMATION INVOLVING ACCURATE DIMENSIONS TO STRUCTURE FROM DIMENSIONS SHOWN ON ARCHITECTURAL AND STRUCTURAL DRAWINGS, OR BY SITE MEASUREMENTS. SITE PLAN LAYOUT TO BE OBTAINED FROM ARCHITECT OR CIVIL ENGINEER. CONSULT GENERAL CONSTRUCTION DRAWINGS AS WELL AS DETAIL DRAWINGS TO BECOME FAMILIAR WITH ALL CONDITIONS AFFECTING THE WORK, AND VERIFY SPACES IN WHICH THE WORK WILL BE INSTALLED.

#	DATE	DESCRIPTION	BY
1	2024-05-09	ISSUED FOR REVIEW	MR
2	2024-09-25	ISSUED FOR SPA	MR

PROJECT: **CHICK-FIL-A ORLEANS - 4270 INNES ROAD, OTTAWA, ONTARIO**

DRAWING: **ELECTRICAL SITE PLAN PHOTOMETRIC AND DETAILS**

PROJECT NO: 24-002-005
 PROJECT DATE: MAY 2024
 DRAWN BY: U.N.
 CHECKED BY: M.R.
 SCALE: AS SHOWN

