



Chick-fil-A

Chick-fil-A  
5200 Buffington Road  
Atlanta, Georgia 30349-2998

exp Services Inc.  
T: +1.905.793.9800 | F: +1.905.793.0641  
1595 Clark Boulevard  
Brampton, ON L6T 4V1  
Canada  
www.exp.com



• BUILDINGS • EARTH & ENVIRONMENT • ENERGY •  
• INDUSTRIAL • INFRASTRUCTURE • SUSTAINABILITY

10/04/2024

# CHICK-FIL-A ORLEANS

4270 Innes Road  
Ottawa, ON

## FSR#30038

BUILDING TYPE / SIZE: IP01 SE  
RELEASE: XXXXXXXX

REVISION SCHEDULE		
NO.	DATE	DESCRIPTION
A	2024-10-02	FOR SPA

CONSULTANT PROJECT #	BRM0023002042-HO
PROJECT STATUS	SPA
DATE	MAY 2023
DRAWN BY	T.M.

Information contained on this drawing and in all digital files produced for above named project may not be reproduced in any manner without express written or verbal consent from authorized project representatives.

SHEET  
CONSTRUCTION  
MANAGEMENT PLAN

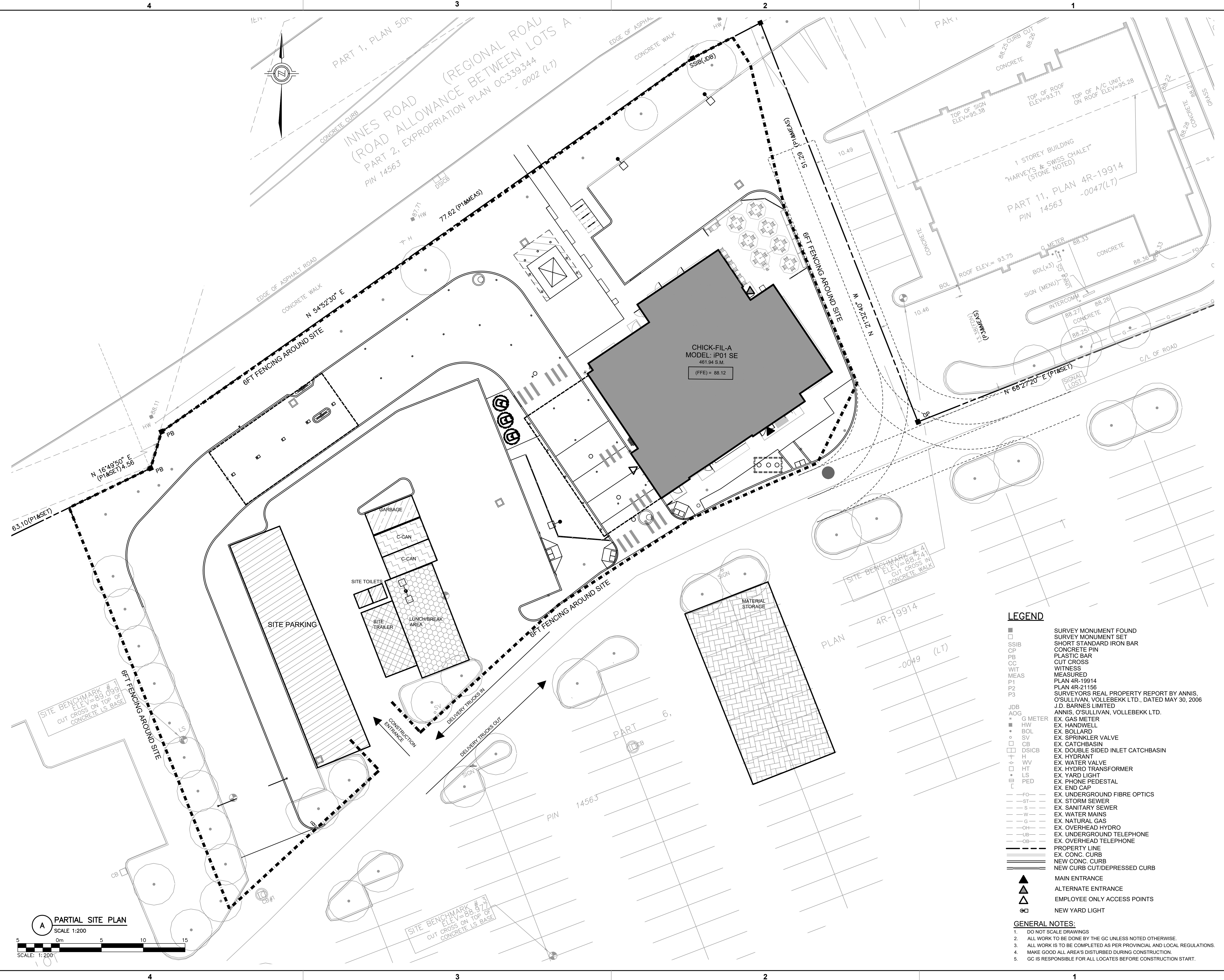
SHEET NUMBER

# CMP1

Issued for SPA

LEGEND	
■	SURVEY MONUMENT FOUND
□	SURVEY MONUMENT SET
OP	SHORT STANDARD IRON BAR
CP	CONCRETE PIN
PB	PLASTIC BAR
CC	CUT CROSS
WIT	WITNESS
MEAS	MEASURED
P1	PLAN 4R-19914
P2	PLAN 4R-21156
P3	SURVEYORS REAL PROPERTY REPORT BY ANNIS, O'SULLIVAN, VOLLEBEKK LTD., DATED MAY 30, 2006
JDB	J.D. BARNES LIMITED
AOG	ANNIS, O'SULLIVAN, VOLLEBEKK LTD.
•	EX. GAS METER
■	EX. HANDWELL
•	EX. BOLLARD
•	EX. SPRINKLER VALVE
□	EX. CATCHBASIN
□	EX. DOUBLE SIDED INLET CATCHBASIN
•	EX. HYDRANT
•	EX. WATER VALVE
□	EX. HYDRO TRANSFORMER
•	EX. YARD LIGHT
•	EX. PHONE PEDESTAL
•	EX. END CAP
---	EX. UNDERGROUND FIBRE OPTICS
---	EX. STORM SEWER
---	EX. SANITARY SEWER
---	EX. WATER MAINS
---	EX. NATURAL GAS
---	EX. OVERHEAD HYDRO
---	EX. OVERGROUND TELEPHONE
---	EX. OVERHEAD TELEPHONE
---	PROPERTY LINE
---	EX. CONC. CURB
---	NEW CONC. CURB
---	NEW CURB CUT/DEPRESSED CURB
▲	MAIN ENTRANCE
▲	ALTERNATE ENTRANCE
▲	EMPLOYEE ONLY ACCESS POINTS
□	NEW YARD LIGHT

- GENERAL NOTES:**
- DO NOT SCALE DRAWINGS
  - ALL WORK TO BE DONE BY THE GC UNLESS NOTED OTHERWISE.
  - ALL WORK IS TO BE COMPLETED AS PER PROVINCIAL AND LOCAL REGULATIONS.
  - MAKE GOOD ALL AREAS DISTURBED DURING CONSTRUCTION.
  - GC IS RESPONSIBLE FOR ALL LOCATES BEFORE CONSTRUCTION START.



**A PARTIAL SITE PLAN**  
SCALE 1:200



E:\BRM\BRM-23002042-HO\60\_Execution\65\_Drawings\23002042-HO-CMP1-RA.dwg  
3 October 2024