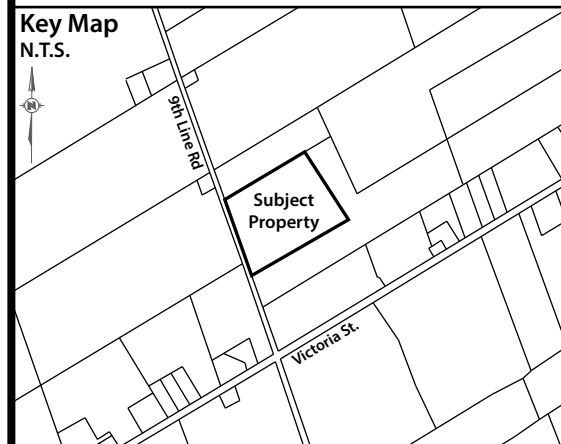


ASB Greenworld Site and Landscape Plan - Additional Information Sheet

2545 9th Line Road
 Part Lots 19 and 20, Concession 9
 Geographic Township of Osgoode
 CITY OF OTTAWA



REV#	Revision	By	Date (YY/MM/DD)
1	Site & Landscape Plan Additional Info Sheet for Review	C. Clarke	24/07/19
2	Site & Landscape Plan Additional Info Sheet for Review	C. Clarke	24/10/19

Owner: ASB Greenworld Ltd.
 332911 Plank Line Rd
 Mount Elgin, ON N0J1N0

Engineer: GHD Limited
 179 Colonnade Road South
 Suite 400
 Ottawa, Ontario K2E 7J4

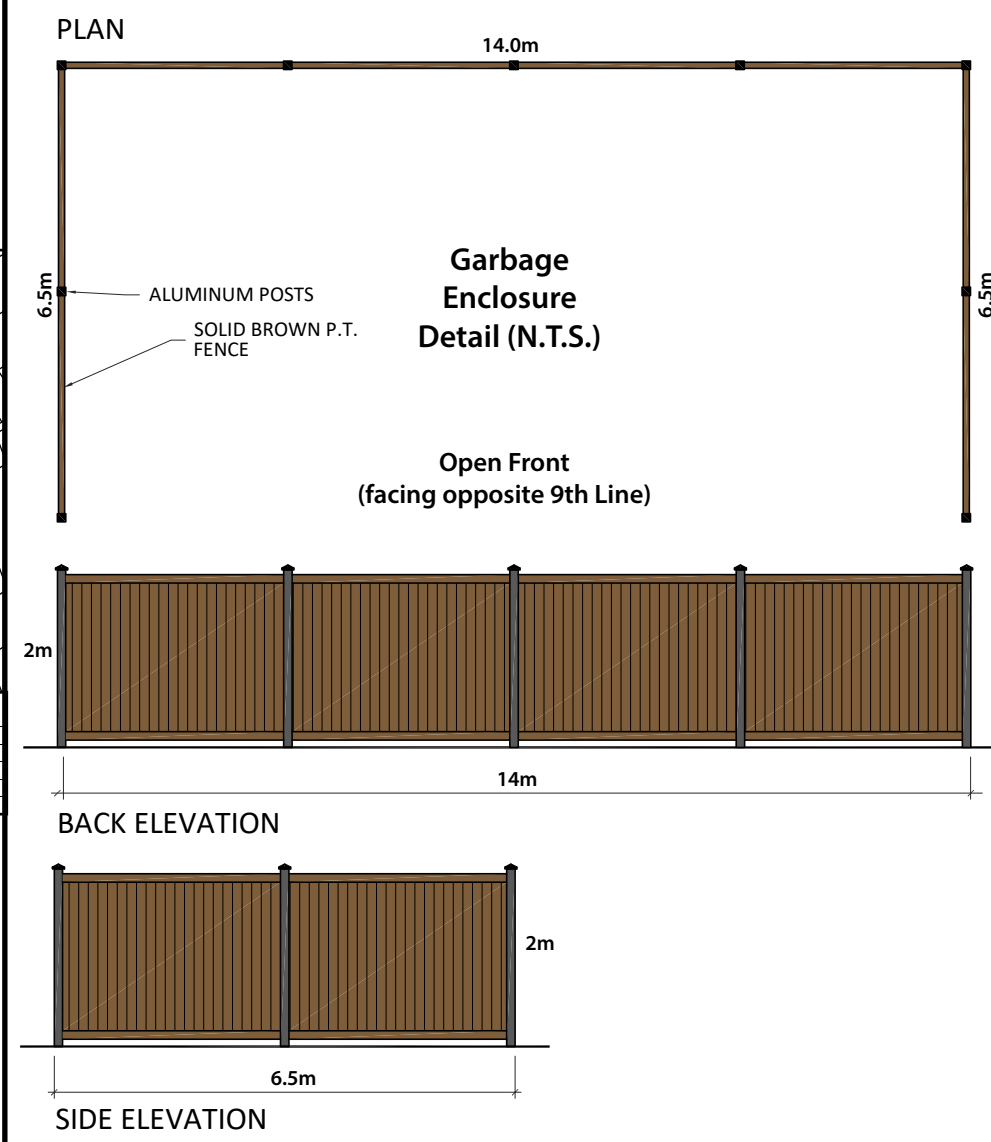
Surveyor: Callon Dietz Inc.
 19 Roe Street
 Carleton Place, ON K7C 0N3

Notes:
 1. This additional information sheet has been provided in support of the Site and Landscape Plan to provide details for various site features like garbage, bicycle parking, fencing design, and proposed vegetation for the site.

Version Date: October 19, 2024
 File No. 22-130 Drawn By: CC

ZANDERPLAN
 Your rural land planning experts
 40 Sunset Boulevard, Perth, ON K7H 2Y4 613-264-9600

Garbage Enclosure Design Details



Planting List Table and Details

Planting Lit Table for 2545 9 th Line Road				
Common Name	Botanical Name	Size	Letter on Site Plan	Special Requirements
Eastern White Cedar	Thuja occidentalis	Up to 15m at Full Maturity	A	- Remove tree from container at planting and dig hole twice the width of the root bulb - Proposed locations will provide for at least 6 hours of sunlight
White Spruce	Picea glauca	Up to 30m at Full Maturity	B	- Remove tree from container at planting and dig hole twice the width of the root bulb - Proposed locations will provide for at least 6 hours of sunlight
Bur Oak	Quercus macrocarpa	Up to 30m at Full Maturity	C	- Remove tree from container at planting and dig hole twice the width of the root bulb - For burlapped trees, place the root ball in the hole and gently cut away burlap.
Freeman Maple	Acer freemanii	Up to 15-20m at Full Maturity	D	- Remove tree from container at planting and dig hole twice the width of the root bulb - For burlapped trees, place the root ball in the hole and gently cut away burlap.

Bike Rack Design Details

