

*****ADDITIONAL LANDSCAPE PLAN NOTES*****
 LANDSCAPING ON CITY OF OTTAWA PROPERTY TO BE TO CITY OF OTTAWA DETAILS / STANDARDS. L1-L6, L17
 TREES ON CITY OF OTTAWA PROPERTY TO CARRY A 2 YEAR WARRANTY.
 REFER TO SITE PLAN FOR LOCATIONS AND DIMENSIONS OF BUILDING, ROADS, PARKING, CURBS, SETBACKS,
 EASEMENTS, LEGAL DESCRIPTION.
 EXISTING AND PROPOSED SITE SERVICING IS SHOWN ON THE LANDSCAPE PLAN TO PROVIDE AN AWARENESS TO
 REVIEWERS AND CONTRACTORS OF THEIR INTENDED LOCATION AND SEPARATION OF TREES/SERVICES/PROPOSED
 LANDSCAPING. DETERMINE AS BUILT LOCATIONS OF SERVICES PRIOR TO PLANTING AND ADJUST ACCORDINGLY TO
 REQUIRED SETBACKS

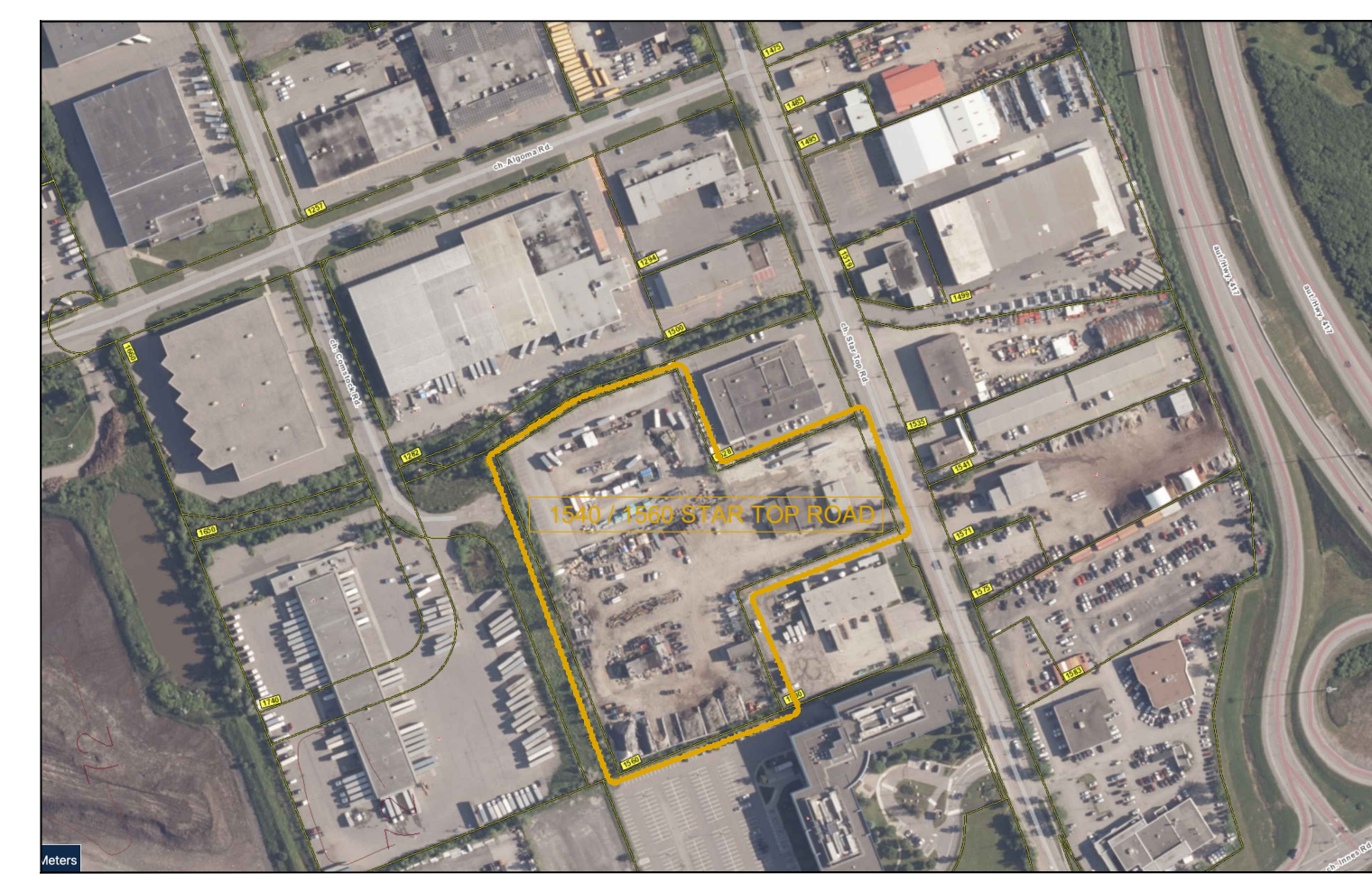
CONSULTANT TEAM

DESIGN BUILDER: BBS CONSTRUCTION INC.	(513) 228-8630
ARCHITECT: DESIGNING ARCHITECTURE & INTERIOR DESIGN	(613) 697-6113
TRANSFORMATION, PLANNING AND CIVIL: MONTOSH PERRY CONSULTING ENGINEERS	(613) 836-2154
LANDSCAPE ARCHITECT: GJA INC.	(613) 296-5130
GEOTECHNICAL AND ENVIRONMENTAL: PATERSON GROUP INC.	(613) 226-7381
SURVEYOR: MONTOSH PERRY SURVEYING INC.	(613) 287-6524
ENVIRONMENTAL PLANNING: MUNCASTER ENVIRONMENTAL PLANNING INC.	(613) 748-3753

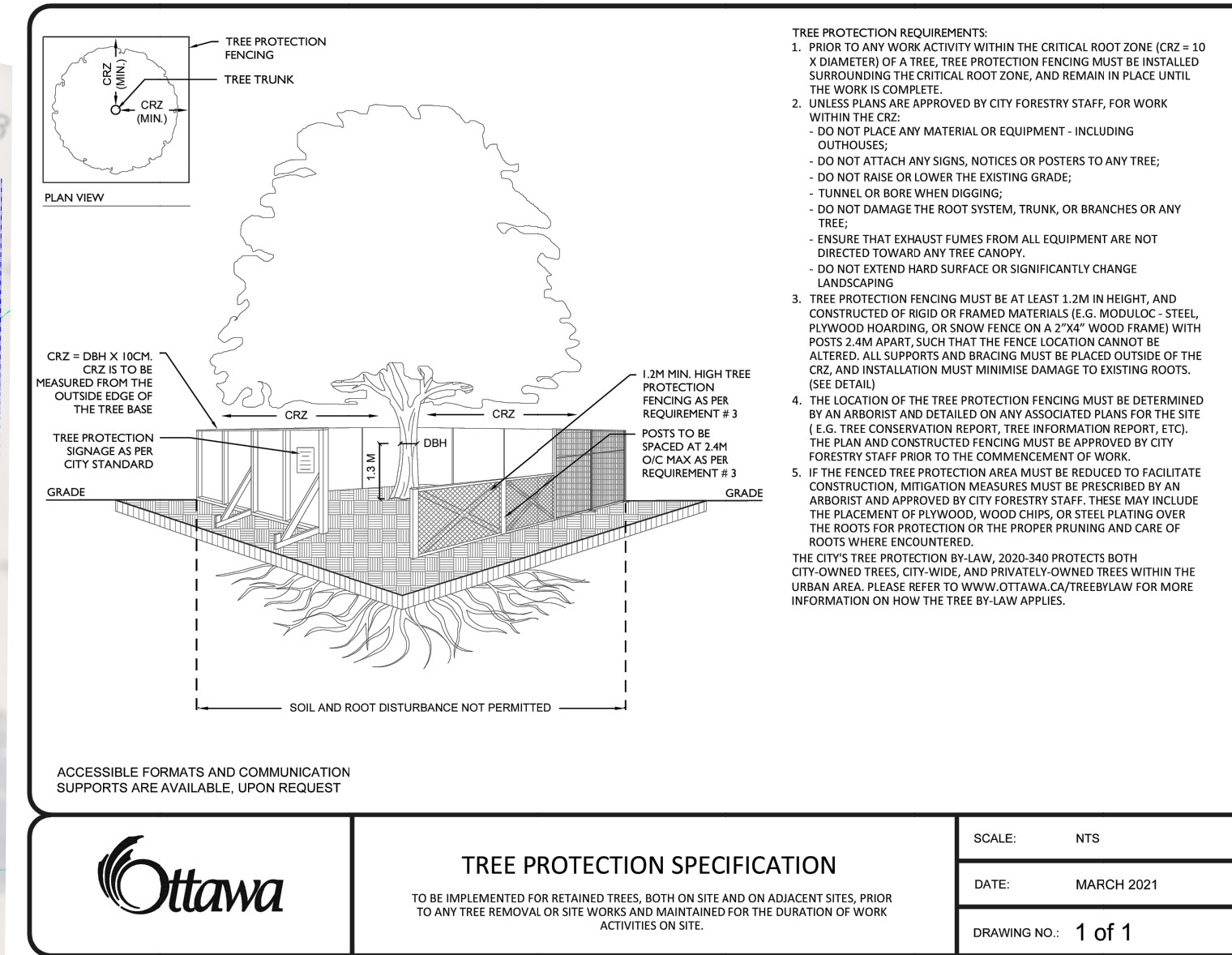
**CITY OF OTTAWA
LANDSCAPING STANDARD DETAIL DRAWINGS**

TABLE OF CONTENTS

L1	Planting Symbols
L2	Planting Details
L3	Planting Details
L4	Planting Details
L5	Planting Details
L6	Planting Details
L7	Planting Details
L8	Planting Details
L9	Planting Details
L10	Planting Details
L11	Planting Details
L12	Planting Details
L13	Planting Details
L14	Planting Details
L15	Planting Details
L16	Planting Details
L17	Planting Details
L18	Planting Details
L19	Planting Details
L20	Planting Details
L21	Planting Details
L22	Planting Details
L23	Planting Details
L24	Planting Details
L25	Planting Details
L26	Planting Details
L27	Planting Details
L28	Planting Details
L29	Planting Details
L30	Planting Details
L31	Planting Details
L32	Planting Details
L33	Planting Details
L34	Planting Details
L35	Planting Details
L36	Planting Details
L37	Planting Details
L38	Planting Details
L39	Planting Details
L40	Planting Details
L41	Planting Details
L42	Planting Details
L43	Planting Details
L44	Planting Details
L45	Planting Details
L46	Planting Details
L47	Planting Details
L48	Planting Details
L49	Planting Details
L50	Planting Details
L51	Planting Details
L52	Planting Details
L53	Planting Details
L54	Planting Details
L55	Planting Details
L56	Planting Details
L57	Planting Details
L58	Planting Details
L59	Planting Details
L60	Planting Details
L61	Planting Details
L62	Planting Details
L63	Planting Details
L64	Planting Details
L65	Planting Details
L66	Planting Details
L67	Planting Details
L68	Planting Details
L69	Planting Details
L70	Planting Details
L71	Planting Details
L72	Planting Details
L73	Planting Details
L74	Planting Details
L75	Planting Details
L76	Planting Details
L77	Planting Details
L78	Planting Details
L79	Planting Details
L80	Planting Details
L81	Planting Details
L82	Planting Details
L83	Planting Details
L84	Planting Details
L85	Planting Details
L86	Planting Details
L87	Planting Details
L88	Planting Details
L89	Planting Details
L90	Planting Details
L91	Planting Details
L92	Planting Details
L93	Planting Details
L94	Planting Details
L95	Planting Details
L96	Planting Details
L97	Planting Details
L98	Planting Details
L99	Planting Details
L100	Planting Details



Drawing Represents the Property of/Ownership Reserved by GJA INC. Do Not Use or Reproduce Without Approval of Gino J. Aiello.
Contractor is Responsible for Verification of Site Locations of all Utilities. Report any Discrepancies Between Site and Drawing Immediately to
 Gino J. Aiello. Do NOT Proceed Until Clarified.
 TURF AREAS TO BE 500 CW 150MM DEPTH TOPSOIL ON APPROVED SUBGRADE | SOD TO BE #1 GRADE TURFGRASS NURSERY SOD per NSGA - Fine Fescue/Kentucky Bluegrass Sod | PLANTING MIX TO BE APPROVED BY LANDSCAPE ARCHITECT | PLANT MATERIAL TO MEET CANL STANDARDS/BE APPROVED BY LANDSCAPE ARCHITECT PRIOR TO PLANTING | ALL MATERIALS & WORK TO BE MAINTAINED UNTIL FINAL ACCEPTANCE. (MOWING TURF, WEEDING BEDS, WATERING TURF & PLANTS) & INCLUDE 1 YEAR WARRANTY FROM DATE OF FINAL ACCEPTANCE | PROVIDE WATERING OF ALL PLANT MATERIAL AS REQUIRED FOR PROPER ESTABLISHMENT, UNTIL END OF WARRANTY PERIOD | REFER TO CIVIL ENGINEER'S DRAWING FOR ELEVATIONS / GRADING |
 The Landscape Plan is to be read in conjunction with the grading, servicing, site and survey plan | Bare root material to be planted in season only | All plant material locations to be staked on site by the landscape contractor and checked by the landscape architect prior to planting | All trees to be preserved or directly adjacent to the site will be protected | Plant material are to be installed a minimum of 3.0m away from any part of any hydro transformer, 3.0m corridor between a fire hydrant and the curb, a 2.5m radius beside or behind a fire hydrant, 2.0m from any servicing/utility line or structure |



TREE PROTECTION SPECIFICATION

SCALE: NTS
 DATE: MARCH 2021
 DRAWING NO.: 1 of 1

TREE SCHEDULE - BBS CONSTRUCTION 1540 / 60 STARTOP ROAD BOONE WAREHOUSE

CODE	QTY	BOTANICAL NAME	COMMON NAME	B&B SPECIMEN	SPREAD	NATIVE
AR	8	Acer rubrum	Red Maple	50mm cal	12M	YES
AS	8	Acer saccharum	Sugar Maple	50mm cal	15M	YES
AG	3	Aesculus glabra	Ohio Buckeye	50mm cal	10M	YES
BP	1	Betula papyrifera	Paper Birch	50mm cal	10M	YES
CO	7	Celtis occidentalis	Common Hackberry	50mm cal	18M	YES
GD	3	Gymnocladus dioica	Kentucky Coffee Tree	50mm cal	12M	YES
QM	2	Quercus macrocarpa	Bur Oak	50mm cal	20M	YES
QR	6	Quercus rubra	Red Oak	50mm cal	15M	YES
TOTALS	38	4				
AB	1	Abies balsamea	Balsam Fir	1.5m Ht.	N/A	YES
JV	5	Juniperus virginiana	Eastern Red Cedar	1.5m Ht.	N/A	YES
LL	1	Larix laricina	Eastern Larch / Tamarack	1.5m Ht.	N/A	YES
PS	1	Pinus strobus	White Pine	1.5m Ht.	N/A	YES

TCR - REFER TO REPORT BY IFS

Existing Tree to Remain
 Existing Tree to Remove
 Protection for Existing Trees

LANDSCAPE PLAN LEGEND

- Coniferous Tree symbol 3.0m diameter
- Deciduous Tree symbol 6.0m diameter
- 40 Year Outlook according to Michael A. Dirr, Manual of Woody Landscape Plants
- Planting Bed
- Shrub Planting Bed
- Turf
- Concrete Monolithic Curb
- Concrete
- Retaining Wall
- Fence
- Bike Rack Anchor to Concrete
- Fire Hydrant
- FD Siamese Connection
- Light Standard

BELOW GRADE SERVICES REFER TO CIVIL/CUP

- WTR U/G Water Service
- STM U/G Storm Service
- SAN U/G Sanitary Service
- GAS U/G Gas Service
- BC U/G TelCo Service
- H U/G Hydro Service
- OHW O/H Hydro Service

PROPERTY LINE
 EASEMENT LINE

ORIGINAL DATE OF PLAN 2023 07 01

7	per Servicing of 24 10 03	2024 10 08
6	per Servicing of 24 08 14	2024 09 26
5	LATEST	2024 08 15
4	SPC SUBMISSION 3	2024 04 15
3	SPC SUBMISSION 3	2023 12 18
2	SPC SUBMISSION 2	2023 11 13
1	SPC SUBMISSION 1	2023 08 04
0	REVIEW/COORDINATION	2023 07 01
#	Revision	Date

PROPERTY OWNER
4457315 CANADA INC.
 1282 ALGOMA ROAD GLOUCESTER ONTARIO K1B 3W8

GJA INC.
 GINO J. AIELLO | LANDSCAPE ARCHITECT
 GJAL.COM | 613 286 5130 | GINO@GJAL.COM
 115 BROADVIEW ROAD UNIT # 1, OTTAWA ONTARIO K1P 1K7

NEW WAREHOUSE BOONE

1540 / 1560 STAR TOP ROAD OTTAWA

Landscape Plan
 Scale: 1:400
L1
 DWG # 19125

RIPARIAN PLANTING PER EIS BOONE WAREHOUSE STARTOP

Code	Qty.	Botanical Name	Common Name	Size	Condition	NATIVE
ac	5	Amelanchier canadensis	Tree Serviceberry	1.0m Ht.	Pot	YES
as	5	Acer saccharum	Sugar Maple	1.0m Ht.	Pot	YES
cr	5	Cornus racemosa	Grey Dogwood	1.0m Ht.	Pot	YES
vt	5	Viburnum lentago	Nannyberry	1.0m Ht.	Pot	YES
ta	5	Tilia americana	Basswood	1.0m Ht.	Pot	YES
ab	5	Abies balsamea	Balsam Fir	0.5m Ht.	Pot	YES
pg	5	Picea glauca	White Spruce	0.5m Ht.	Pot	YES

SHRUBS BOONE WAREHOUSE STARTOP

Code	Qty.	Botanical Name	Common Name	Size	Condition	Condition
HK	75	Hypericum kalmianum	Kalm St. John's Wort	30cm	Pot	YES
HP	400	Hypericum prolificum	Shrubby St. John's Wort	40cm	Pot	YES
RP	350	Rosa palustris	Swamp Rose	50cm	Pot	YES
SA	150	Spiraea alba	Meadowsweet	60cm	Pot	YES

Circum Bicycle Rack
 PS-76-101-TP - Circum Bike Rack

Depth: 2" (5.1cm)
 Diameter: 24" (61.0cm)
 Height: 33" (83.8cm)
 Weight: 21.2 (46.8 lb)

Our Circum Bicycle Rack features a welded tubular and flat-bar steel construction. It is available in your choice of Hauser's QTE powdercoat finishes or Hauser's ELD Thermoplastic finishes.

HAUSER SITE FURNITURE
 sales@hausersite.com
 800-268-7328
 hausersite.com

