

KEY PLAN: NTS

40 YEAR CANOPY CALCULATION:

-5,729 m2 site area

-2 Large coniferous trees proposed (79m2 ea.) & 25 small trees proposed (7m2 ea)

=333m2 canopy cover =5.8% canopy cover

***Large coniferous tree calculated at 10m, small deciduous trees at 3m.**

Tree planting opportunities are limited on site due to the presence of Marine Clay Soil.

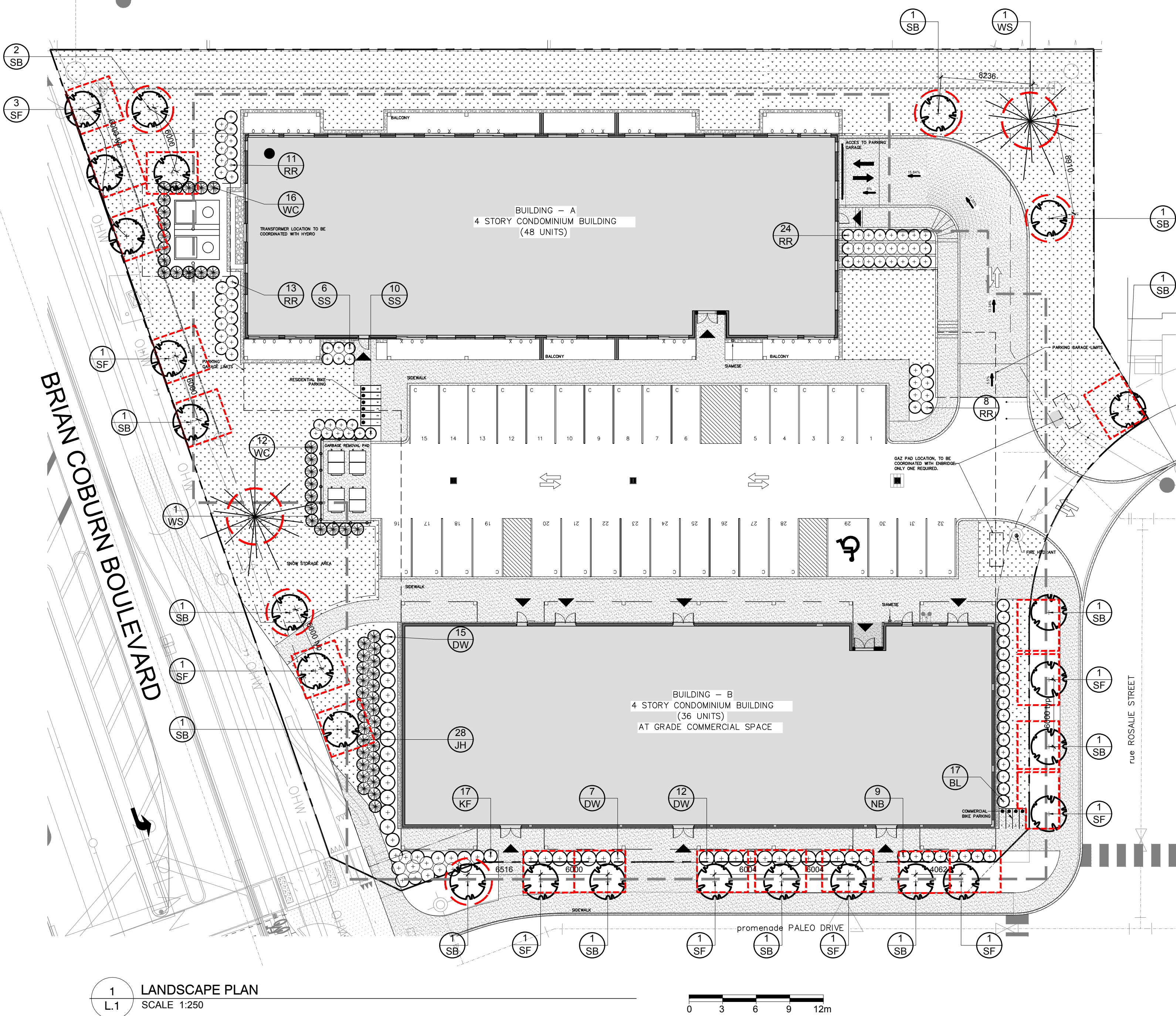
GENERAL NOTES:

- It is the responsibility of the appropriate contractor or official to report any errors, omissions or discrepancies on this plan with actual site conditions to the Landscape Architect before proceeding with construction.
- The contractor is to notify all utility companies and authorities prior to any excavation and ascertain locations of underground services.
- The contractor is to reinstate all areas and items damaged as a result of construction activity.
- The contractor is to comply with all pertinent codes and by-laws.
- The contractor is to maintain a positive surface run-off throughout the entire construction period.
- The Landscape Architect is not responsible for subsurface conditions.
- The contractor is to identify all existing trees to remain on site with the Landscape Architect prior to construction.
- The contractor is to stake the proposed location of all plant material in conjunction with the Landscape Architect prior to excavation.
- Minimum distances for selected deciduous trees are as follows:
 - Building Foundations 7.5m
 - Sidewalks 1.5m
 - Public Streets 2.5m
 - Underground Infrastructure 1.5m
- All trees within 1m of underground utility trenches are to be excavated by hand.
- Remove all protective wrapping from tree trunks after installation.
- Staking of trees shall only be performed if necessary.
- Ensure that mulch is pulled back a min. distance of 75mm from base of tree trunk.

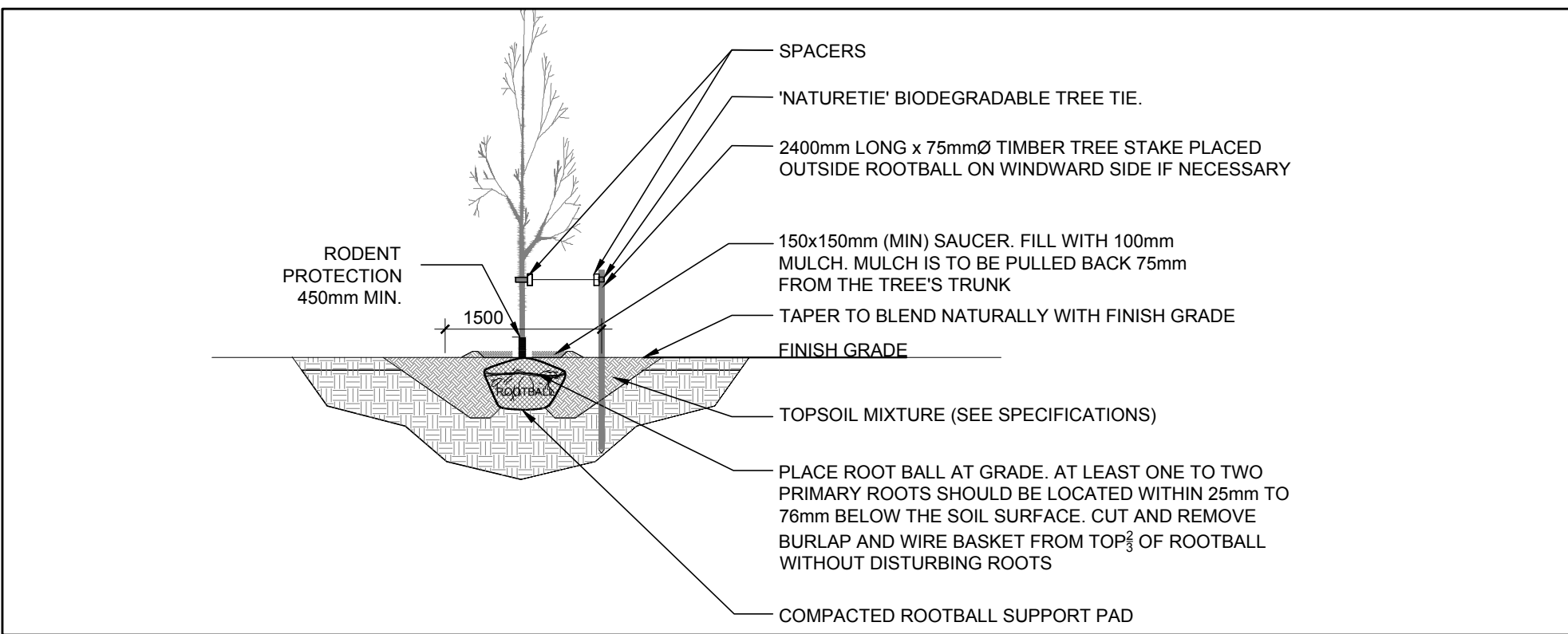
PROPOSED PLANT LIST

KEY	QTY.	BOTANICAL NAME	COMMON NAME	SIZE	CONDITION	REMARKS
PROPOSED TREES						
* SB	14	Amelanchier canadensis	Shadblow Serviceberry	50mm cal.	B&B	
* SF	11	Amelanchier laevis	Allegheny Serviceberry	50mm cal.	B&B	
* WS	2	Picea glauca	White Spruce	2.0m ht.	B&B	
SHRUBS						
* DW	34	Cornus sericea	Red Osier Dogwood	600 mm ht.	Potted	1000 mm o.c.
JH	28	Juniperus horizontalis 'Bar Harbor'	Bar Harbor Juniper	600 mm spr.	Potted	1000 mm o.c.
* NB	9	Physocarpus opulifolius	Ninebark	600 mm ht.	Potted	1000 mm o.c.
RR	58	Rosa rugosa	Rugosa Rose	600 mm ht.	Potted	1000 mm o.c.
* SS	16	Rubus odoratus	Flowering Raspberry	600 mm ht.	Potted	1000 mm o.c.
* WC	28	Thuja occidentalis	White Cedar	2000 mm ht.	Potted	1000 mm o.c.
ORNAMENTAL GRASSES						
BL	17	Leymus arenarius 'Blue Dune'	Blue Dune Grass	250mm pot	Potted	800 mm o.c.
KF	17	Calamagrostis 'Karl Foerster'	Karl Foerster Grass	250mm pot	Potted	800 mm o.c.
* NATIVE TO ONTARIO						

NOTE: ALL TREES ARE PROPOSED ON PRIVATE PROPERTY WITH THE EXCEPTION OF THE EIGHT (8) TREES PROPOSED ON THE PALEO DRIVE R.O.W. AND THE FOUR (4) TREES PROPOSED ON THE ROSEDALE STREET R.O.W.

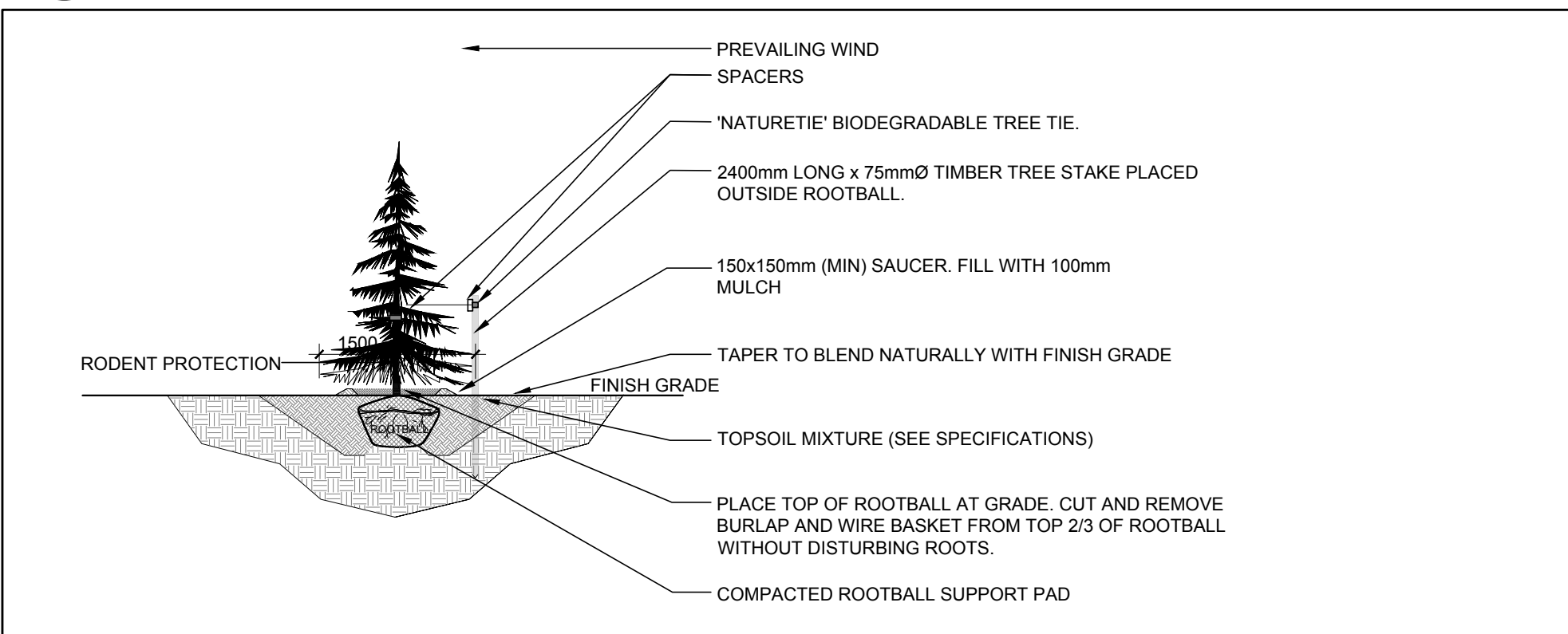


1 LANDSCAPE PLAN
SCALE 1:250



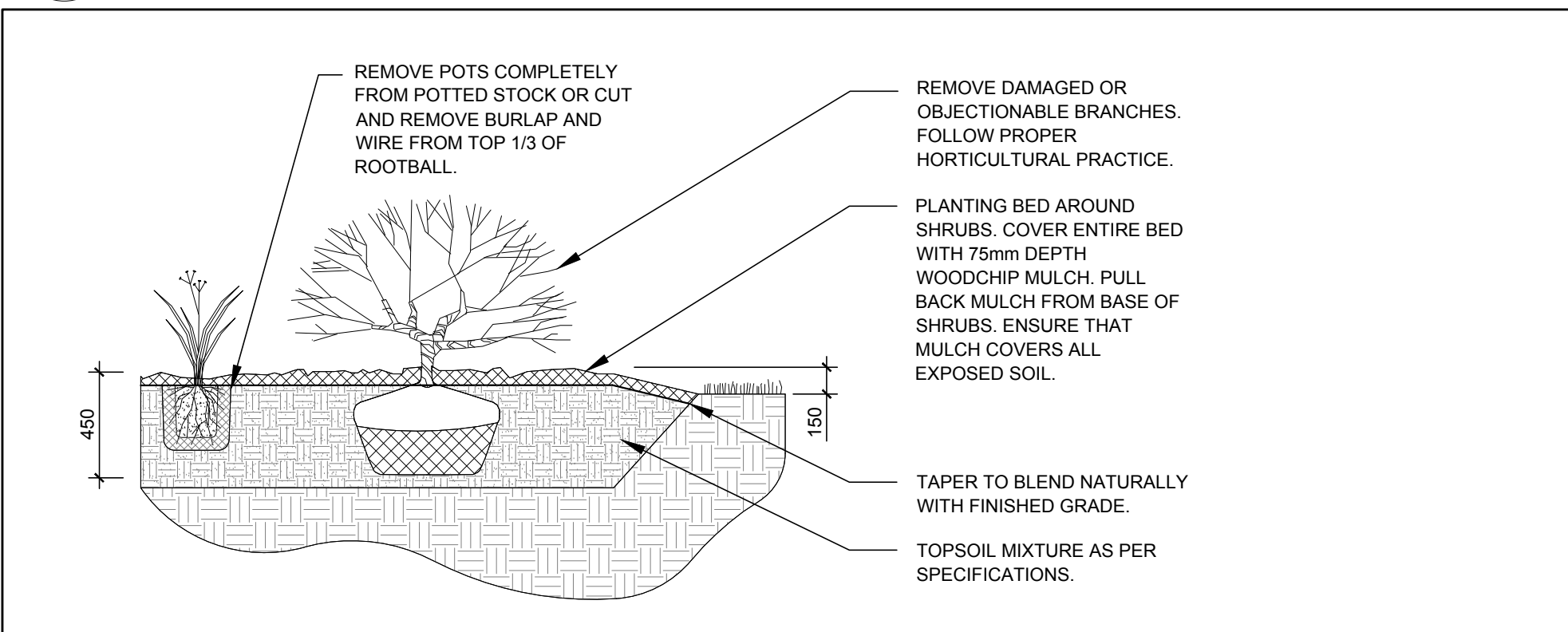
2 DECIDUOUS TREE PLANTING

L.1 SCALE: NTS



3 CONIFEROUS TREE PLANTING

L.1 SCALE: NTS



4 PROPOSED SHRUB / ORNAMENTAL GRASS PLANTING

L.1 SCALE: NTS

CLIENT:

788 BOUL. SAINT-JOSEPH, SUITE 100
GATINEAU, QC J8Y 4B8

ARCHITECTURAL

(418) 851-8954
INFO@PMAARCHITECTES.COM

3070, CHEMIN DES QUATRE-SOURSOIS
QUÉBEC (QC) G1W 3K4
PMAARCHITECTES.COM

53 BOUL. SAINT-RAYMOND,
GATINEAU, QC J8Y 1R8

ENGINEERS / PLANNER

1565 CARLING AVENUE, SUITE 700,
OTTAWA, ON K1Z 8R1

SURVEYOR

1331 CLYDE AVENUE, SUITE 400,
OTTAWA, ON K2C 3G4

LEGEND

40 YEAR CANOPY PROJECTION
PROPOSED DECIDUOUS TREE
REQUIRED SOIL VOLUME (25m3)

40 YEAR CANOPY PROJECTION
PROPOSED CONIFEROUS TREE
REQUIRED SOIL VOLUME (30m3)

PROPOSED SHRUBS / ORNAMENTAL
GRASSES

PROPOSED SOD

PROPOSED RIVERSTONE

4.5m SETBACK

4	NOTE REVISED RE: TREE PLANTING	03/04/2024	ML	JL
3	REVISED PER CITY COMMENTS	03/01/2024	ML	JL
2	REVISED PER CITY COMMENTS	02/28/2024	ML	JL
1	ISSUED FOR SITE PLAN CONTROL	12/15/2023	ML	JL

JAMES B. LENNOX & ASSOCIATES INC.
LANDSCAPE ARCHITECTS
3332 CARLING AVE. OTTAWA, ONTARIO K2H 5A8
Tel. (613) 722-5168 Fax. (613) 722-3942

PROJECT
NAVAN ROAD DEVELOPMENT- BUILDINGS "A"
AND "B"
NAVAN ROAD, ORLEANS ON

DRAWING
LANDSCAPE PLAN

STAMP

SCALE
AS SHOWN

START DATE
NOVEMBER 2023

PROJECT NO.

PROJECT NORTH

DRAWING NO.
L.1

PLOT SIZE ARCH-D