

Andrew McCreight
ANDREW MCCREIGHT
 MANAGER, DEVELOPMENT REVIEW CENTRAL
 PLANNING, DEVELOPMENT & BUILDING SERVICES
 DEVELOPMENT DEPARTMENT, CITY OF OTTAWA

APPROVED
 By Andrew McCreight at 10:10 am, Oct 15, 2024



EXTERIOR MATERIALS LEGEND

MASONRY

1.1 MASONRY
FINISH : GREY (COLOR CODE TBC)

1.2 MASONRY
FINISH : GREY (COLOR CODE TBC)

METAL CLADDING

2.1 PRE-PAINTED METAL PANEL
FINISH : OFF-WHITE (COLOR CODE TBC)

2.2 PRE-PAINTED METAL PANEL
FINISH : GREY (COLOR CODE TBC)

2.3 PRE-PAINTED METAL FLASHING
FINISH : GREY (COLOR CODE TBC)

2.4 PRE-PAINTED METAL FLASHING
FINISH : OFF-WHITE (COLOR CODE TBC)

2.5 PRE-PAINTED METAL PANEL
FINISH : OFF-WHITE (COLOR CODE TBC)

WINDOWS, DOORS AND CURTAIN WALLS

4.1 WINDOWS, CURTAIN WALLS AND DOORS : PRE-PAINTED ALUMINIUM & CLEAR TEMPERED GLASS
FINISH : PALE CHARCOAL (COLOR CODE TBC)

4.2 DOOR : PAINTED STEEL
FINISH : PALE CHARCOAL (COLOR CODE TBC)

4.3 DOOR : PAINTED STEEL
FINISH : OFF-WHITE (COLOR CODE TBC)

RAILINGS AND SCREENS

5.1 ANODIZED ALUMINIUM FRAME & NATURAL CLEAR GLASS
FINISH : OFF-WHITE (COLOR CODE TBC)

5.2 ANODIZED ALUMINIUM FRAME & PATTERNED GLASS
FINISH : OFF-WHITE (COLOR CODE TBC)

GENERAL NOTES / NOTES GÉNÉRALES

1. These architectural documents are the exclusive property of NEUF architect(e)s and cannot be used, copied or reproduced without written pre-authorization. / Ces documents d'architecture sont la propriété exclusive de NEUF architect(e)s et ne pourront être utilisés, reproduits ou copiés sans autorisation écrite préalable.

2. All dimensions which appear on the documents must be verified by the contractor before to start the work. / Les dimensions apparaissant aux documents devront être vérifiées par l'entrepreneur avant le début des travaux.

3. The architect must be notified of all errors, omissions and discrepancies between these documents and those of the others professionals. / Veuillez aviser l'architecte de toute dimension erreur et/ou divergences entre ces documents et ceux des autres professionnels.

4. The dimensions on these documents must be read and not measured. / Les dimensions sur ces documents doivent être lues et non mesurées.

STRUCTURE Structure
D+M Structural inc.
 333 Preston St. Suite 110, Ottawa, ON K1S 5N4
 T 613 651 9490

LANDSCAPE ARCHITECT Architecture de Paysage
James B. Lennox & Associate inc.
 3302 Carling Ave. Ottawa, ON K2H 5A8
 T 613 722 5168

CIVIL Civil
WSP
 1600 Boul. René-Lévesque O 11 étage, Montréal, QC H3H 1P9
 T 514 340 0046

MECHANICAL/ELECTRICAL Mécanique/Électrique
Jain Sustainability Consultants
 7405 East Danbro Crescent Mississauga, Ontario L5N 6P8
 T 905 285 9900

URBAN PLANNER Urbaniste
Fotenn
 396 Cooper St Suite 300, Ottawa, ON K2P 2H7
 T 613 730 5709

ARCHITECT Architectes
NEUF architect(e)s
 630, boul. René-Lévesque O, 32e étages, Montréal QC H3B 1S6
 T 514 847 1117 NEUFarchitectes.com

SCEAU / Seal

NORTH ELEVATION
 1
 1 : 200
 SPC-14



EAST ELEVATION
 2
 1 : 200
 SPC-14

FILE NUMBER: D07-12-21-0015
 PLAN NUMBER: 18597

NEUF
 ARCHITECT(E)S

SMART LIVING PROPERTIES
 226 Argyle Avenue, Ottawa, Ontario K2P 1B9

112 NELSON
 NO PROJET No: 13368
 EMPLACEMENT Location: 112 & 134 NELSON STREET, OTTAWA

NO	REVISION	DATE (aa.mm.jj)
1	SPC SUBMISSION	2024.07.10
2	SPC SUBMISSION RV.2	2024.09.11

DESSINÉ PAR Drawn by: S.W.
 DATE (aa.mm.jj): 2024.09.11
 TITRE DU DESSIN Drawing Title: NORTH & EAST ELEVATIONS

VÉRIFIÉ PAR Checked by: M.M., H.G.
 ÉCHELLE Scale: As indicated

NORTH & EAST ELEVATIONS

REVISION Revision: 2
 NO. DESSIN Dwg Number: SPC-14

Andrew McCreight
ANDREW MCCREIGHT
 MANAGER, DEVELOPMENT REVIEW CENTRAL
 PLANNING, DEVELOPMENT & BUILDING SERVICES
 DEVELOPMENT DEPARTMENT, CITY OF OTTAWA

APPROVED
 By Andrew McCreight at 10:10 am, Oct 15, 2024



EXTERIOR MATERIALS LEGEND	
MASONRY	
①.1	MASONRY FINISH : GREY (COLOR CODE TBC)
①.2	MASONRY FINISH : GREY (COLOR CODE TBC)
METAL CLADDING	
②.1	PRE-PAINTED METAL PANEL FINISH : OFF-WHITE (COLOR CODE TBC)
②.2	PRE-PAINTED METAL PANEL FINISH : GREY (COLOR CODE TBC)
②.3	PRE-PAINTED METAL FLASHING FINISH : GREY (COLOR CODE TBC)
②.4	PRE-PAINTED METAL FLASHING FINISH : OFF-WHITE (COLOR CODE TBC)
②.5	PRE-PAINTED METAL PANEL FINISH : OFF-WHITE (COLOR CODE TBC)
WINDOWS, DOORS AND CURTAIN WALLS	
④.1	WINDOWS, CURTAIN WALLS AND DOORS : PRE-PAINTED ALUMINIUM & CLEAR TEMPERED GLASS FINISH : PALE CHARCOAL (COLOR CODE TBC)
④.2	DOOR : PAINTED STEEL FINISH : PALE CHARCOAL (COLOR CODE TBC)
④.3	DOOR : PAINTED STEEL FINISH : OFF-WHITE (COLOR CODE TBC)
RAILINGS AND SCREENS	
⑤.1	ANODIZED ALUMINIUM FRAME & NATURAL CLEAR GLASS FINISH : OFF-WHITE (COLOR CODE TBC)
⑤.2	ANODIZED ALUMINIUM FRAME & PATTERNED GLASS FINISH : OFF-WHITE (COLOR CODE TBC)

GENERAL NOTES / NOTES GÉNÉRALES

- These architectural documents are the exclusive property of NEUF architect(e)s and cannot be used, copied or reproduced without written pre-authorization. / Ces documents d'architecture sont la propriété exclusive de NEUF architect(e)s et ne pourront être utilisés, reproduits ou copiés sans autorisation écrite préalable.
- All dimensions which appear on the documents must be verified by the contractor before to start the work. / Les dimensions apparaissant sur ces documents doivent être vérifiées par l'entrepreneur avant le début des travaux.
- The architect must be notified of all errors, omissions and discrepancies between these documents and those of the others professionals. / Veuillez aviser l'architecte de toute dimension erreur ou divergence entre ces documents et ceux des autres professionnels.
- The dimensions on these documents must be read and not measured. / Les dimensions sur ces documents doivent être lues et non mesurées.

STRUCTURE Structure
D+M Structural inc.
 333 Preston St. Suite 110, Ottawa, ON K1S 5N4
 T 613 651 9490

LANDSCAPE ARCHITECT Architecture de Paysage
James B. Lennox & Associate inc.
 3332 Carling Ave. Ottawa, ON K2H 5A8
 T 613 722 5168

CIVIL Civil
WSP
 1600 Boul. René-Lévesque O 11 étage, Montréal, QC H3H 1P9
 T 514 340 0046

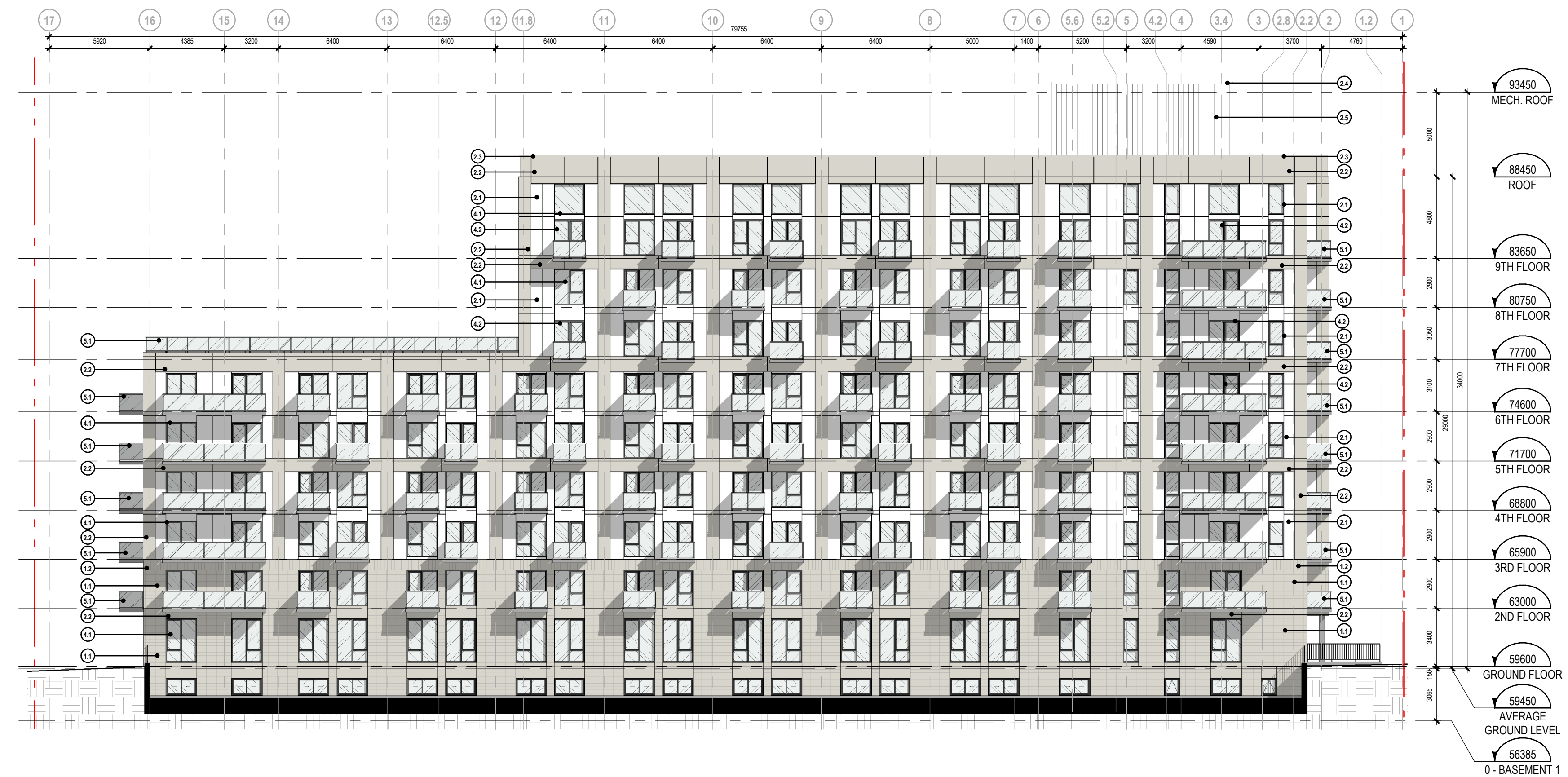
MECHANICAL/ELECTRICAL Mécanique/Électrique
Jain Sustainability Consultants
 7405 East Danbro Crescent Mississauga, Ontario L5N 6P8
 T 905 285 9900

URBAN PLANNER Urbaniste
Fotenn
 396 Cooper St Suite 300, Ottawa, ON K2P 2H7
 T 613 730 5709

ARCHITECT Architectes
NEUF architect(e)s
 630, boul. René-Lévesque O, 32e étages, Montréal QC H3B 1S6
 T 514 847 1117 NEUFarchitectes.com

SCEAU / Seal

SOUTH ELEVATION ②
 1 : 200
 5m 20m



WEST ELEVATION ①
 1 : 200
 5m 20m

FILE NUMBER: D07-12-21-0015
 PLAN NUMBER: 18597

NEUF
 ARCHITECT(E)S

CLIENT Client

SMART LIVING
 PROPERTIES
 226 Argyle Avenue, Ottawa, Ontario K2P 1B9

OUVRAGE Project
112 NELSON

EMPLACEMENT Location NO PROJET No.
112 & 134 NELSON STREET, OTTAWA 13368

NO	REVISION	DATE (aa.mm.jj)
1	SPC SUBMISSION	2024.07.10
2	SPC SUBMISSION RV.2	2024.09.11

DESSINÉ PAR Drawn by S.W. VÉRIFIÉ PAR Checked by M.M., H.G.
 DATE (aa.mm.jj) 2024.09.11 ÉCHELLE Scale As indicated
 TITRE DU DESSIN Drawing Title

SOUTH & WEST ELEVATIONS

REVISION Revision NO. DESSIN Dwg Number
2 SPC-15