

Ottawa (Head Office)

1800 Bantree Street
Ottawa, Ontario K1B 5L6

☎ 613.745.2444
☎ 613.745.9994

www.cwwcanada.com
1.866.695.0155

Montreal

7562, Côte-de-Liesse
St-Laurent, Quebec H4T 1E7

☎ 514.738.2666
☎ 514.738.9762



INTEGRATED SEWER SOLUTIONS

ALL SAINTS DEVELOPEMENT

384 ARLINGTON
Ottawa, Ontario

SEWER CCTV INSPECTION REPORT

Report ID
137920CO1

Sewer Use
Combined

Completion Date
May 06, 2024

Inspected Length
73.00 meters

THE WAY IS CLEAR™

- Watermain Swabbing
- Hydro Vacuum Excavation
- CCTV Inspection of Sewers
- Plumbing & Drain Services
- Structural Rehabilitation of Manholes
- Cured-in-Place-Pipe Lining & Spot Repairs
- Grouting, Test & Seal Joints, Manholes & Services
- Lateral Sewer Inspection & Locates From Main
- Sewer Cleaning, Flushing & Pumping

Table of contents



	Page
1. Index of pipes	2
2. Structural rating	3
3. O&M rating	4
4. Pipe summary and condition details	5
5. Vision Report© Legend	8

1. Index of pipes

1 item

Inspected length : 73.00

Total length : 73.00

Pipe	Start/End	Direction	Road	Date	Inspected	Total	Page
MHCH10777 MHCH10778	MHCH10778 -> MHCH10777	Against flow	384 ARLINGTON AVE	06/05/2024 8:03 AM	73	73	5

2. Structural rating

1 item

0 - No Defects (1 of 1 items)

Score	Quick	Index	Pipe	Start/End	Direction	Road	Page
0	0000	0	MHCH10777 MHCH10778	MHCH10778 --> MHCH10777	Against flow	384 ARLINGTON AVE	5

3. O&M rating

1 item

0 - No Defects (1 of 1 items)

Score	Quick	Index	Structural	Pipe	Start/End	Direction	Road	Page
0	0000	0	0	MHCH10777 MHCH10778	MHCH10778 --> MHCH10777	Against flow	384 ARLINGTON AVE	5

4. Pipe summary and condition details

Pipe identification

Pipe:	MHCH10777 MHCH10778	Direction of inspection:	MHCH10778 --> MHCH10777
Direction of flow:	MHCH10777 --> MHCH10778	Direction:	Against flow

Pipe location

Road:	384 ARLINGTON AVE	<u>UPSTREAM</u>	<u>DOWNSTREAM</u>
Crossroad:		Easting (X):	Easting (X):
Drainage Area:		Northing (Y):	Northing (Y):
City:	OTTAWA ON	Elevation (Z):	Elevation (Z):
Location:	Light Highway	GPS Accuracy:	
Owner:	CITY OF OTTAWA	Corrdinate System:	
Road segment:		Vertical Datum:	

Pipe characteristics

Sewer Use:	Combined	Inspected length:	73
Height:	300	Total length:	73
Width:		Rim/Inv.:	
Shape:	Circular	Grade/Inv.:	
Material:	Polyvinyl Chloride	Rim/Grade:	
Lining:		Rim/Inv.:	
Joint length:	4	Grade/Inv.:	
Year laid:		Rim/Grade:	
Year renewed:		Sewer category:	

Additional details

Inspection standard:	PACP 6.0	Location details:	
Date:	06/05/2024 8:03 AM	Surveyed by:	Derek B
Project Number:		Certificate #:	U-815--07000446
Customer:	ALL SAINTS DEVELOPMENT	Pre-Cleaning:	Jetting
PO number:		Date cleaned:	
Work order:	137920	Unit of measurement:	Metric
Purpose:	Pre-Rehabilitation Survey	Media label:	
Weather:	Dry	Sheet #:	
Flow control:	Not Controlled		

Structural rating

O&M rating

Overall rating

Peak:	0	Peak:	0	Peak:	0
Quick rating:	0000	Quick rating:	0000	Quick rating:	0000
Score:	0	Score:	0	Score:	0
Index:	0	Index:	0	Index:	0

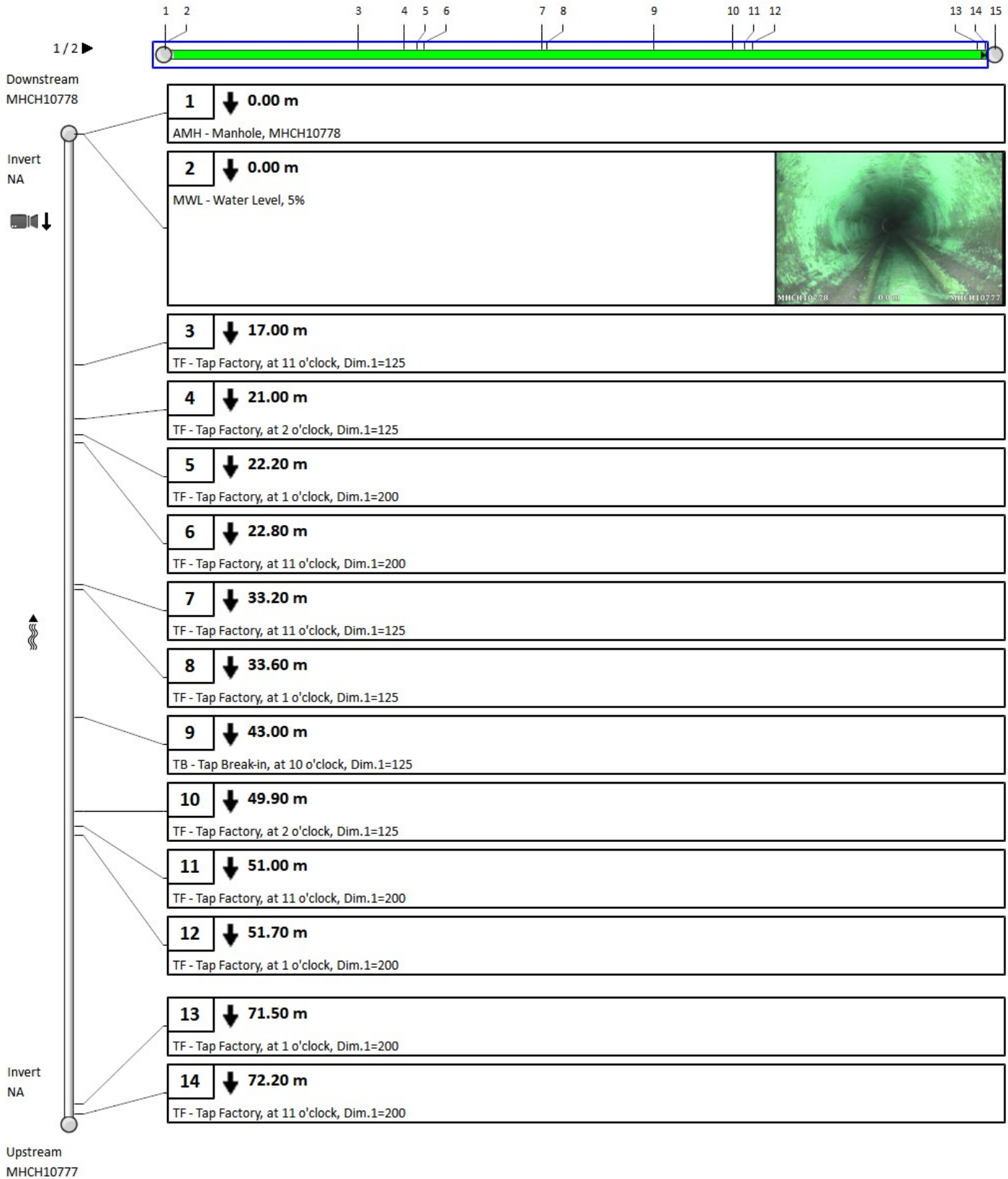
Additional information

--

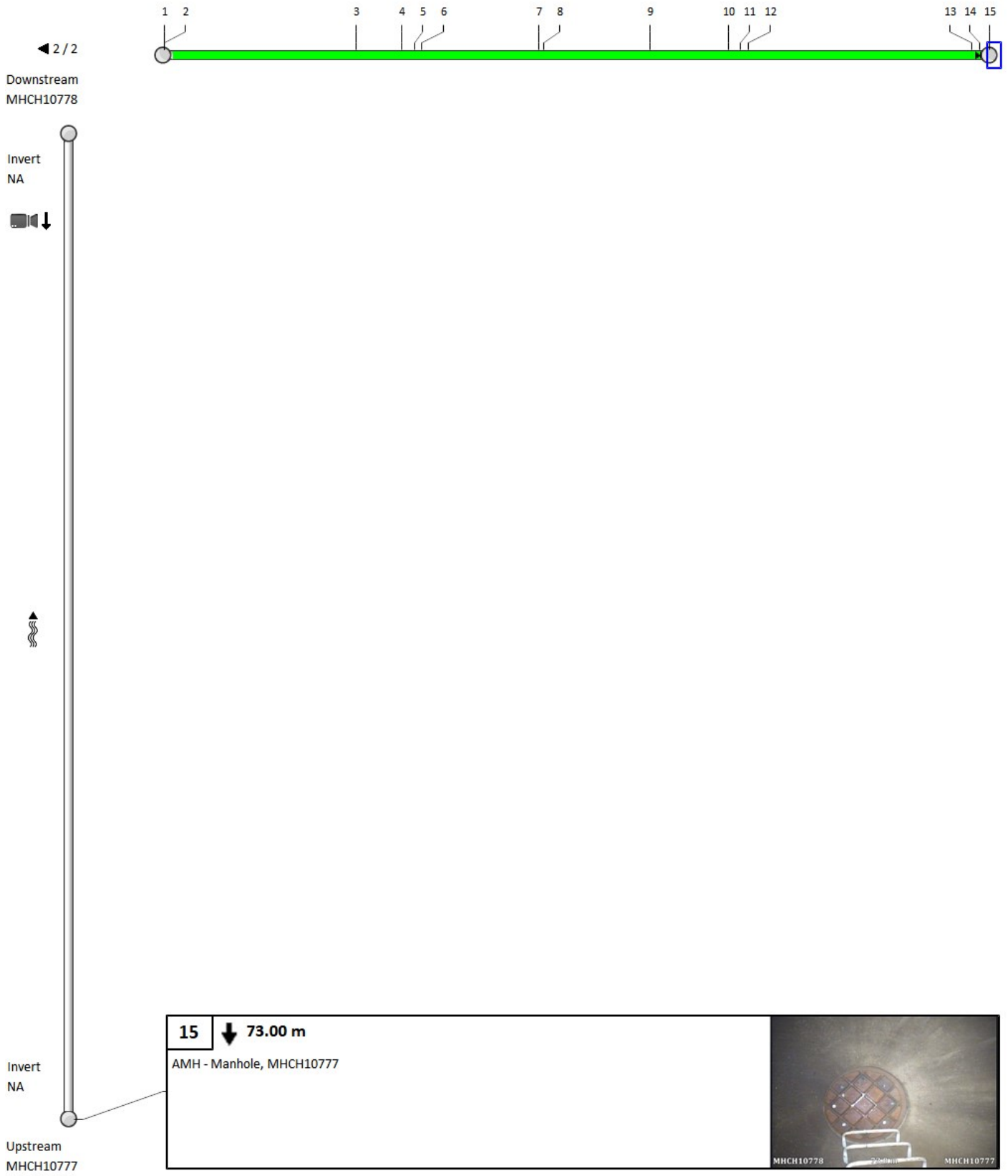
Other information

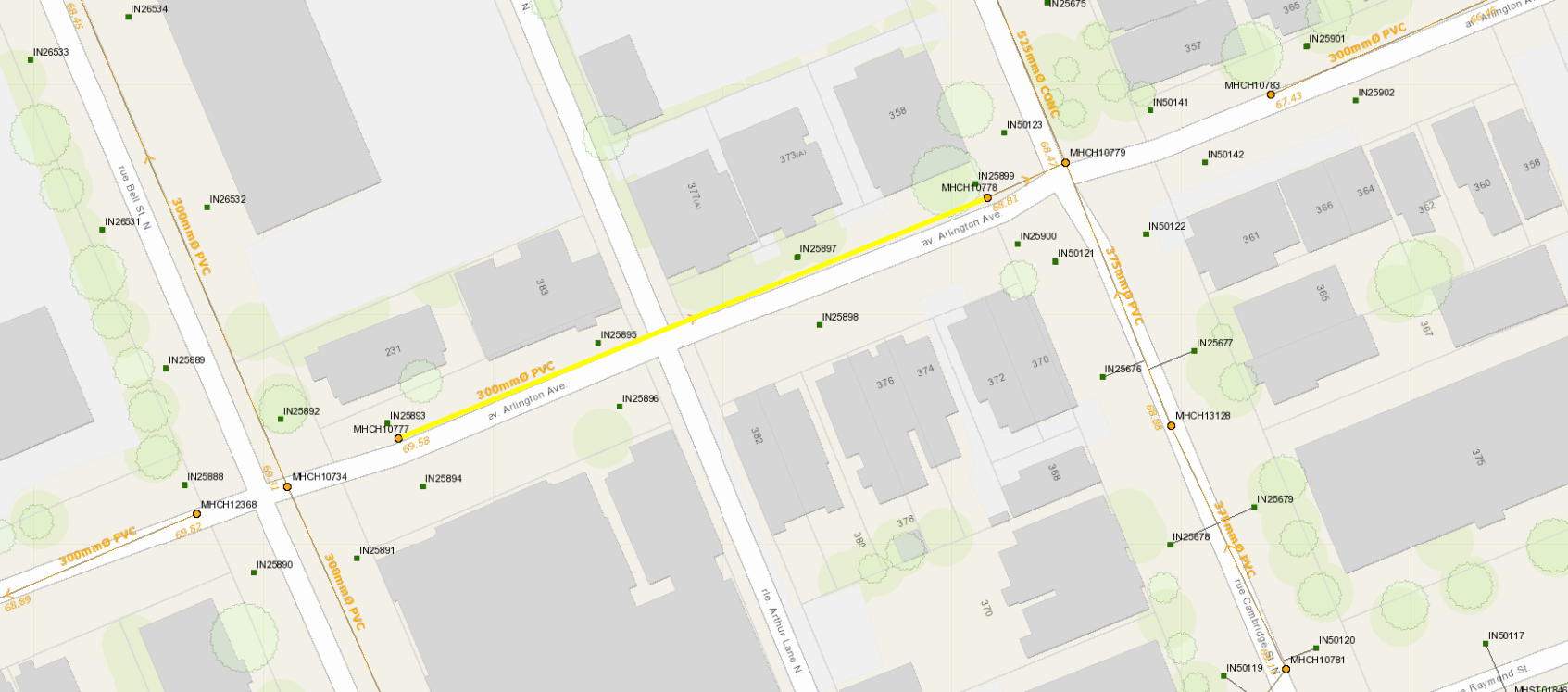
Report ID:	137920CO1	Other 6:	
Other 2:		Other 7:	
Other 3:		Other 8:	
Other 4:		Other 9:	
Other 5:		Other 10:	

4. Pipe summary and condition details

















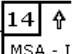


4. Pipe summary and condition details





Vision Report© Legend

	The numbers sequentially identify each observation. They allow you to find complete descriptions and related photos throughout the pages. Note that when the pipe contains too many observations, the Vision© report hides the least important observations to optimize the display*.
60	A number with neither a square nor circle indicates a general observation.
	A circled number indicates a structural anomaly. The color of the circle indicates the severity of the anomaly on a scale of 1 to 5, 5 being the most severe: green=1, blue=2, magenta=3, orange=4 and red=5.
	A number in a square indicates an operation and maintenance anomaly. The color of the square indicates the severity of the anomaly on a scale of 1 to 5, 5 being the most severe: green=1, blue=2, magenta=3, orange=4 and red=5.
◀ 3 / 31 ▶	Indicates the current page number of the inspection report.
	The blue square indicates a section of the pipe; this section is covered in detail on the current page of the report.
	The green line indicates the inspected part of the pipe. The remaining white line indicates the uninspected part of the pipe.
	Indicates the hold points on the camera during an inspection.
	Indicates the hold points on the camera during the reverse inspection.
	Indicates that a reverse inspection was carried out, however the camera did not reach the initial inspection hold point. (the hold point of the initial inspection)
	Indicates that a reverse inspection was carried out and that it has joined (has arrived at) the initial inspection hold point.
401-059B 	Identifies the start manhole number. Note that this manhole is not necessarily the upstream manhole of the pipe.
401-631 	Identifies the end manhole number. Note that this manhole is not necessarily the downstream manhole of the pipe.
 ou 	A downward arrow indicates that the inspection was carried out in the direction of the current, whereas an upward arrow indicates an inspection against the current. Note that the manhole located on the upper left of the page is always the start manhole, but not necessarily the upstream manhole of the pipe.
	This camera followed by a downward arrow is located on the upper left of the vertical pipe; it indicates that an inspection was done from this manhole.
	When the second camera appears on the bottom left page it means that a reverse inspection was carried out. Information about the reverse inspection is included in the report, thereby combining both inspections.
Invert 3.40	The measurement shown under the word <Invert> indicates the measurements between the frame and the pipe captured during the inspection. This measurement is available at the top left for the start manhole and the bottom left for the end manhole. If the invert was not measured during the inspection, an <NA> mark will be displayed.
 AMH - R	The downward bold arrow to the right of the observation number indicates that this observation was captured during the initial inspection.
 MSA - I	The blank arrow pointing upwards and located to the right of the observation number indicates that this observation was taken during the reverse inspection period, thereby confirming that this report combined both inspections.
18.40 m	Located to the right of the observation number is a number identifying the observation distance in relation to the start of the pipe.
SRV - Armature visible	A full description of the observation code according to the protocol used.

*Any hidden observations are readily accessible from the database as well as in other CTSpec report templates.

** CTSpec inc. reserves the right to modify, eliminate or add to the product features described in this pamphlet without notice.

© 2012 CTSpec inc. All rights reserved.