

APPROVED UNDER SECTION 51 OF THE PLANNING ACT  
BY THE CITY OF OTTAWA  
THIS 28th DAY OF March, 2023

*Joanne Hanson*  
DON WHEATLEY, INC. P. ENG.  
ACTING GENERAL MANAGER  
PLANNING, REAL ESTATE AND ECONOMIC  
DEVELOPMENT DEPARTMENT  
CITY OF OTTAWA

**PLAN 4M-1718**

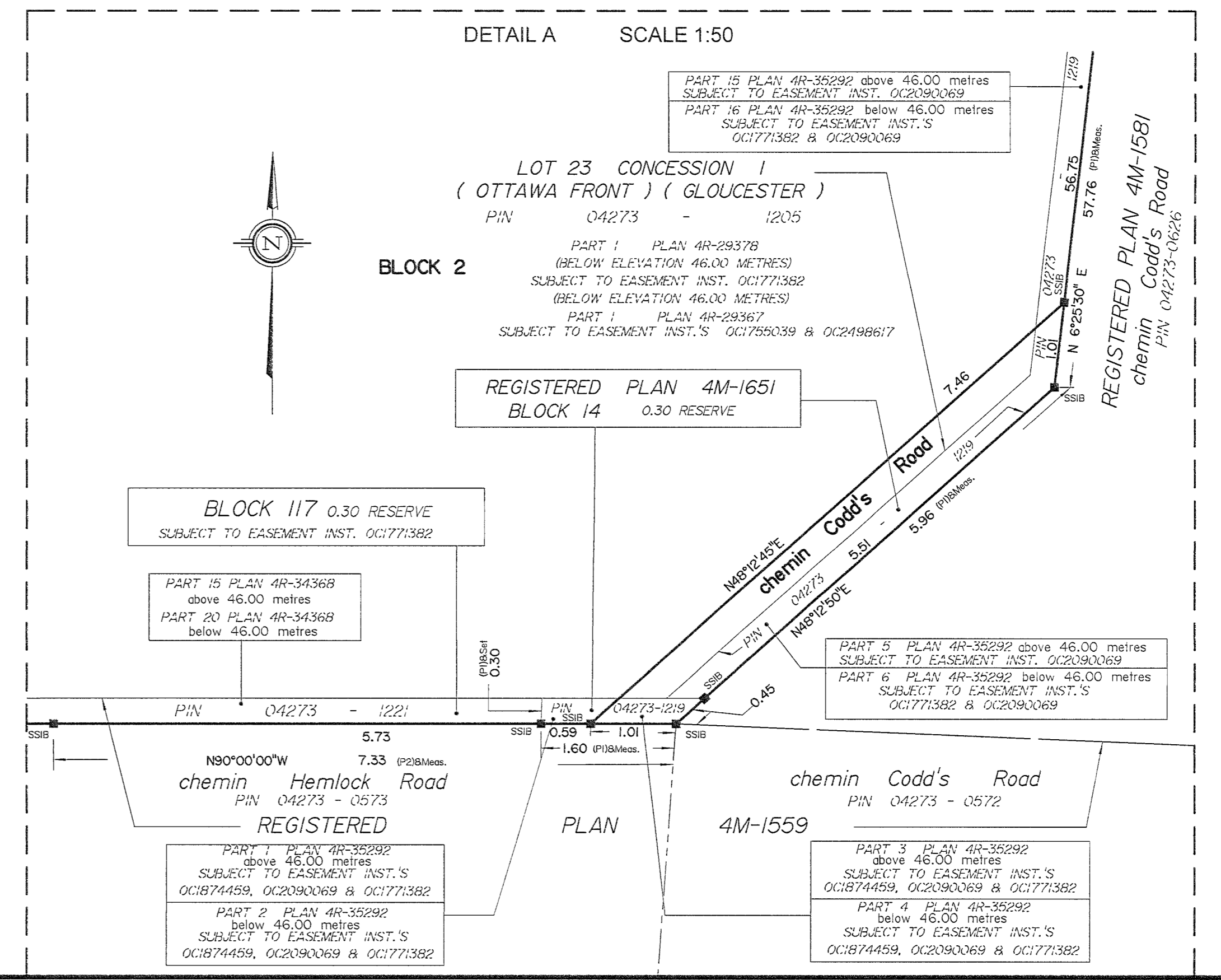
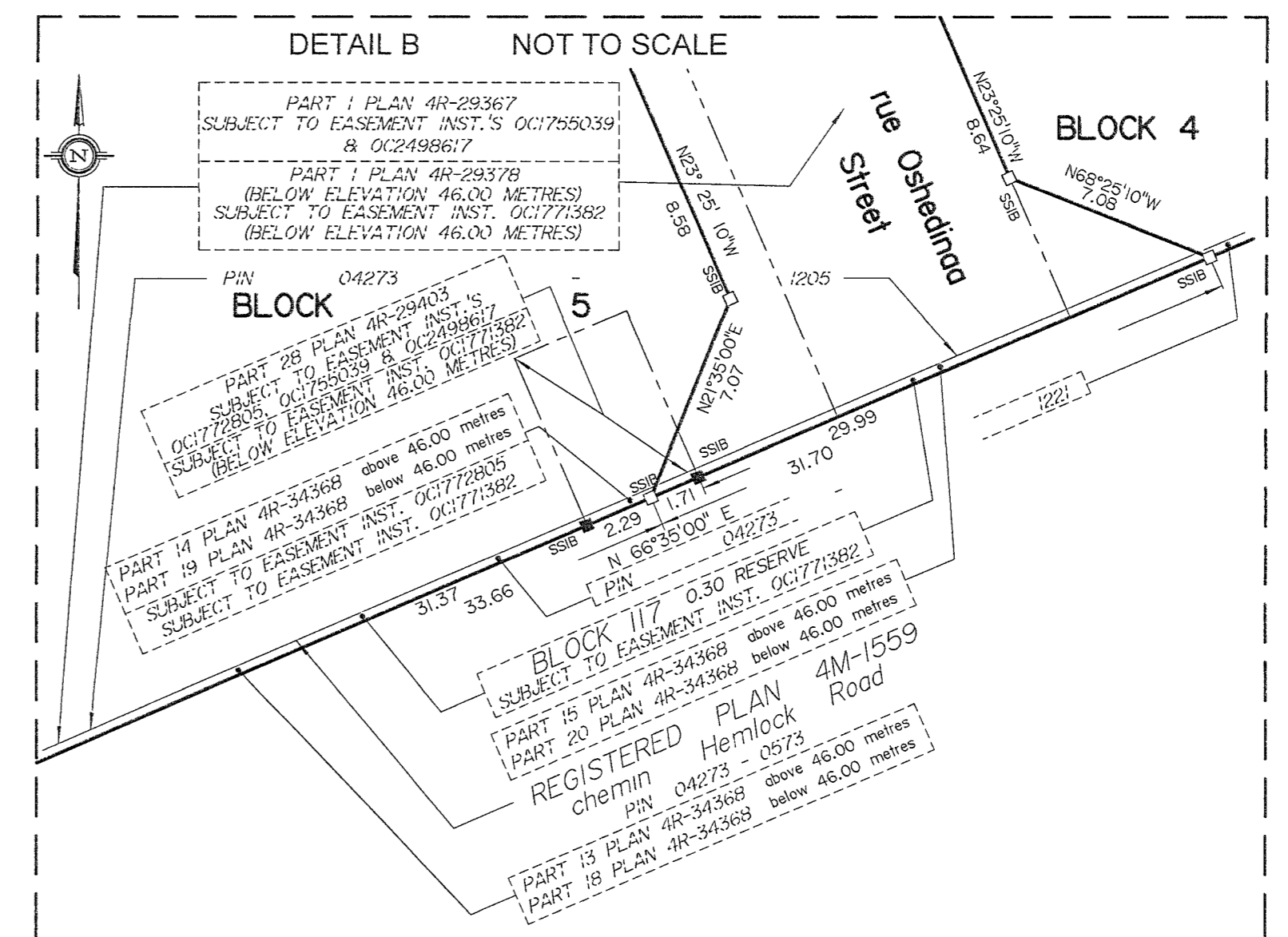
I CERTIFY THAT THIS PLAN  
IS REGISTERED IN THE LAND REGISTRY OFFICE  
FOR THE LAND TITLES DIVISION OF OTTAWA-CARLETON NO. 4  
AT 14:44 O'CLOCK ON THE 31<sup>ST</sup> DAY OF March, 2023  
AND ENTERED IN THE PARCEL REGISTER FOR  
PROPERTY IDENTIFIERS **04273 - 1205, 04273-1219**  
and **04273-1221**  
AND THE REQUIRED CONSENTS ARE REGISTERED AS  
PLAN DOCUMENT NO. **OC2586273**

*Joanne Hanson*  
LAND REGISTRAR

This plan comprises part of PIN 04273-1205 and all of PINs 04273-1219 and 04273-1221.

**NOTES AND LEGEND**

□ denotes Survey Monument Planted.  
-■- Survey Monument Found  
SIB Standard Iron Bar  
SSIB Short Standard Iron Bar  
IB Iron Bar  
(AOG) Annis, O'Sullivan, Vollebek Ltd.  
(P1) Registered Plan 4M-1651  
(P2) Registered Plan 4M-1559  
(P3) Plan 4R-29367  
(P4) Plan 4R-35292  
HCM Horizontal Control Monument



PART OF BLOCKS 1 TO 8 (both inclusive), PART OF RUE OSHEDINAA STREET, PART OF RUE WINISK STREET AND PART OF CHEMIN CODD'S ROAD ARE SUBJECT TO EASEMENT INST. OC1771382

BLOCKS 6 TO 8 (both inclusive), PART OF BLOCKS 1 TO 5 (both inclusive), PART OF RUE WINISK STREET, PART OF RUE OSHEDINAA STREET AND PART OF CHEMIN CODD'S ROAD ARE SUBJECT TO EASEMENT INST.'S OC1755039 & OC2498617.

PART OF BLOCK 5 AND PART OF RUE OSHEDINAA STREET ARE SUBJECT TO EASEMENT INST. OC1772805

PART OF BLOCK 2 AND PART OF CHEMIN CODD'S ROAD ARE SUBJECT TO EASEMENT INST. OC2090069.

PART OF BLOCK 2 AND PART OF CHEMIN CODD'S ROAD ARE SUBJECT TO EASEMENT INST. OC1874459.

**PLAN OF SUBDIVISION**  
**PART OF LOTS 23 AND 24**  
**CONCESSION 1 (OTTAWA FRONT)**  
**Geographic Township of Gloucester**  
and  
**PART OF RESERVE BLOCK 14**  
**REGISTERED PLAN 4M-1651**  
and  
**PART OF RESERVE BLOCK 117**  
**REGISTERED PLAN 4M-1559**  
**CITY OF OTTAWA**  
Surveyed by Annis, O'Sullivan, Vollebek Ltd.

Scale 1 : 750

Metric  
DISTANCES AND COORDINATES SHOWN ON THIS PLAN  
ARE IN METRES AND CAN BE CONVERTED TO FEET BY  
DIVIDING BY 0.3048.

**Surveyor's Certificate**  
I CERTIFY THAT:  
1. This survey and plan are correct and in accordance with the Surveys Act, the Surveyors Act and the Land Titles Act and the regulations made under them.  
2. The survey was completed on the 30th day of January, 2023.

March 23, 2023 *A.J. Broxham*  
Date Andrew J Broxham  
Ontario Land Surveyor

This plan of survey relates to **Meas Plan Submission Form Number V-45070**

**OWNER'S CERTIFICATE**  
THIS IS TO CERTIFY THAT:  
1. Blocks 1 to 8, both inclusive, the Streets, namely, rue Oshedinna Street, chemin Codd's Road and rue Winisk Street have been laid out in accordance with our instructions.  
2. The Streets are dedicated to City of Ottawa as public highways.

Dated the 28th day of MARCH, 2023 *Tara Dinsmore*  
Tara Dinsmore, Vice President, Real Estate (National Capital Region, Atlantic and Acquisitions) Canada Lands Company CLC Limited I have authority to bind the corporation.

Dated the 28th day of MARCH, 2023 *Mary-Jean's*  
Mary-Jean's, Senior Director, Real Estate (National Capital Region, Atlantic and Acquisitions) Canada Lands Company CLC Limited I have authority to bind the corporation.

All found survey monuments are (AOG), unless otherwise noted.  
Distances shown on curved limits are Arc distances unless otherwise noted.

Distances shown on this plan are ground distances and can be converted to grid distances by multiplying by the combined scale factor of 0.999947.

Bearings are grid, derived from Specified Control Points 019188434761 and 01918860146 having a resultant bearing of N 71°28'55" E and are referred to the Central Meridian of MTM Zone 9 (78°30' West Longitude) NAD-83 (original).

Coordinates are referred to the Central Meridian of MTM Zone 9 (78°30' West Longitude) NAD-83 (original).

Coordinate values are to urban accuracy in accordance with O. Reg. 216/10

.019188434761 Northing 5036178.12 Easting 372436.11  
.01918860146 Northing 5035456.42 Easting 372436.81

Caution: Coordinates cannot, in themselves, be used to re-establish corners or boundaries shown on this plan.

**ANNIS, O'SULLIVAN, VOLLEBEK LTD.**  
14 Cochrane Gate, Suite 502  
Nepean, Ont. K2E 7S6  
Phone: (613) 727-0830 Fax: (613) 727-1078  
Email: info@anniso.com

Ontario Land Surveyors (Reg. No. 218-20 Q.C.P. Lts 22-24 C. Of G. S.B. P4 F. /N/A)