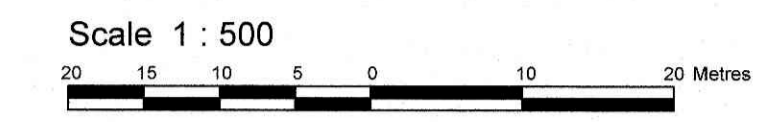


TOPOGRAPHICAL PLAN OF
**PART OF LOT 29
 CONCESSION 1 (OLD SURVEY)**
 Geographic Township of Cumberland
 CITY OF OTTAWA
 Prepared by Annis, O'Sullivan, Vollebakk Ltd.



Metric
 DISTANCES SHOWN ON THIS PLAN ARE IN METRES AND
 CAN BE CONVERTED TO FEET BY DIVIDING BY 0.3048.

May 13, 2022
 Date: E.H. Herweyer O.L.S.

Notes & Legend

Denotes	
○ M+ST	Maintenance Hole (Sanitary)
○ M+S	Maintenance Hole (Storm Sewer)
⊙ VC	Valve Chamber (Watermain)
○ LS	Light Standard
□ CB	Catch Basin
□ DI	Ditch Inlet
CSP	Corrugated Steel Pipe
CCP	Concrete Pipe
PO-W	Wooden Pole
PO-C	Concrete Pole
AN	Anchor
○ FH	Fire Hydrant
⊙ WV	Water Valve
Inv.	Invert
T/G	Top of Grate
T/P	Top of Pipe
□ TB-T	Traffic Terminal Box
□ TB-C	Cable Terminal Box
□ HH	Handhole
★	Coniferous Tree
△ S	Sign
CLF	Chain Link Fence
P&W	Post and Wire Fence
⊙ BH	Borehole
∅	Diameter
+ 65.00	Location of Elevations
+ 66.00	Top of Concrete Curb Elevation
C/L	Centreline
EP	Edge of Pavement
EG	Edge of Gravel
C/L	Centreline
—	Property Line
○ M+T	Maintenance Hole (Traffic)

AREAS
 Part 1 Plan 4R-25378 = 1.300 Hectares
 Part 2 Plan 4R-25378 = 1.214 Hectares
TOTAL SITE AREA = 2.514 Hectares

BOUNDARY INFORMATION COMPILED FROM PLAN 4R-23578 AND
 OFFICE RECORDS.

ELEVATION NOTES

- Elevations shown are referred to geodetic datum.
- It is the responsibility of the user of this information to verify that the job benchmark has not been altered or disturbed and that its relative elevation and description agrees with the information shown on this drawing.

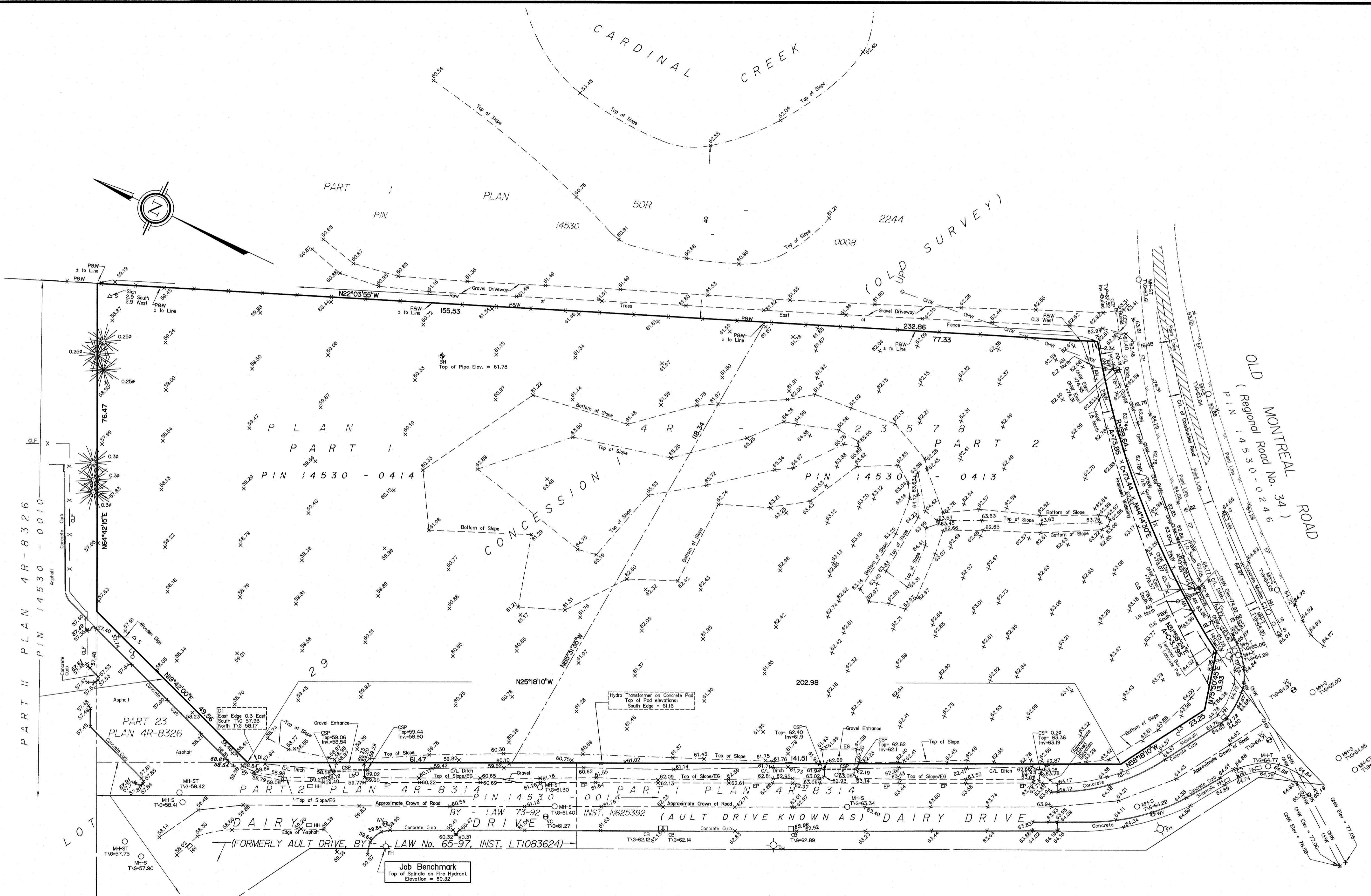
UTILITY NOTES

- This drawing cannot be accepted as acknowledging all of the utilities and it will be the responsibility of the user to contact the respective utility authorities for confirmation.
- Only visible surface utilities were located.
- A field location of underground plant by the pertinent utility authority is mandatory before any work involving breaking ground, probing, excavating etc.

© Annis, O'Sullivan, Vollebakk Ltd. 2013. THIS PLAN IS PROTECTED BY COPYRIGHT.

ANNIS, O'SULLIVAN, VOLLEBEKK LTD.
 14 Concourse Gate, Suite 500
 Nepean, Ont. K2E 7S6
 Phone: (613) 727-0850 / Fax: (613) 727-1079
 Email: Nepean@aovltd.com

Ontario
 Land Surveyors Job No. E2503-22 Pt. L129 Cl. OS CU T. DI



PART I PLAN 4R-8326
 PIN 14530 - 0010

PART II PLAN 4R-8326
 PIN 14530 - 0010

PART 23 PLAN 4R-8326

PART 2 PLAN 4R-8314
 PIN 14530

DAIRY DRIVE
 (FORMERLY AULT DRIVE, BY LAW No. 65-97, INST. L1083624)

OLD MONTREAL ROAD
 (Regional Road No. 34)
 PIN 14530 - 0246

CARDINAL CREEK

CONCESSION 1 (OLD SURVEY)

CONCESSION 1

CONCESSION 2

CONCESSION 3

CONCESSION 4

CONCESSION 5

CONCESSION 6

CONCESSION 7

CONCESSION 8

CONCESSION 9

CONCESSION 10

CONCESSION 11

CONCESSION 12

CONCESSION 13

CONCESSION 14

CONCESSION 15

CONCESSION 16

CONCESSION 17

CONCESSION 18

CONCESSION 19

CONCESSION 20

CONCESSION 21

CONCESSION 22

CONCESSION 23

CONCESSION 24

CONCESSION 25

CONCESSION 26

CONCESSION 27

CONCESSION 28

CONCESSION 29

CONCESSION 30

CONCESSION 31

CONCESSION 32

CONCESSION 33

CONCESSION 34

CONCESSION 35

CONCESSION 36

CONCESSION 37

CONCESSION 38

CONCESSION 39

CONCESSION 40

CONCESSION 41

CONCESSION 42

CONCESSION 43

CONCESSION 44

CONCESSION 45

CONCESSION 46

CONCESSION 47

CONCESSION 48

CONCESSION 49

CONCESSION 50

CONCESSION 51

CONCESSION 52

CONCESSION 53

CONCESSION 54

CONCESSION 55

CONCESSION 56

CONCESSION 57

CONCESSION 58

CONCESSION 59

CONCESSION 60

CONCESSION 61

CONCESSION 62

CONCESSION 63

CONCESSION 64

CONCESSION 65

CONCESSION 66

CONCESSION 67

CONCESSION 68

CONCESSION 69

CONCESSION 70

CONCESSION 71

CONCESSION 72

CONCESSION 73

CONCESSION 74

CONCESSION 75

CONCESSION 76

CONCESSION 77

CONCESSION 78

CONCESSION 79

CONCESSION 80

CONCESSION 81

CONCESSION 82

CONCESSION 83

CONCESSION 84

CONCESSION 85

CONCESSION 86

CONCESSION 87

CONCESSION 88

CONCESSION 89

CONCESSION 90

CONCESSION 91

CONCESSION 92

CONCESSION 93

CONCESSION 94

CONCESSION 95

CONCESSION 96

CONCESSION 97

CONCESSION 98

CONCESSION 99

CONCESSION 100

Job Benchmark
 Top of Spindle on Fire Hydrant
 Elevation = 60.32