

SCHEDULE OF PARTS

PART	LOCATED ON SHEET								PART
	1	2	3	4	5	6	7	8	
1									1
2									2
3									3
4									4
5									5
6									6
7									7
8									8
9									9
10									10
11									11
12									12
13									13
14									14
15									15
16									16
17									17

SCHEDULE

PART	LOT	REGISTERED PLAN	PIN
1	Part of 18 (South York Street)		Part of PIN 04214-0207
2	Part of 19 (South York Street)		Part of PIN 04214-0208
3	Part of 20 (South York Street)		Part of PIN 04214-0120
4	Part of 19 (South York Street)		Part of PIN 04214-0208
5	Part of 20 (South York Street)		Part of PIN 04214-0120
6	Part of 18, 19 (North George Street)		Part of PIN 04214-0208
7	Part of 20 (South York Street)		Part of PIN 04214-0120
8	Part of 20 (North George Street)	42482	Part of PIN 04214-0121
9	Part of 18, 19 (South York Street)		Part of PIN 04214-0207
10	Part of 19 (South York Street)		Part of PIN 04214-0208
11	Part of 20 (South York Street)		Part of PIN 04214-0120
12	Part of 19 (North George Street)		Part of PIN 04214-0208
13	Part of 20 (South York Street)		Part of PIN 04214-0120
14	Part of 19 (North George Street)		Part of PIN 04214-0208
15	Part of 20 (North George Street)		Part of PIN 04214-0121
16	Part of 20 (South York Street)	4797	Part of PIN 04214-0120
17	Part of 18 (South York Street)		Part of PIN 04214-0116

Part 17: Subject to easement inst. OC1803228.

- Notes & Legend**
- IB - Survey Monument Planted
 - IB - Survey Monument Found
 - SIB - Standard Iron Bar
 - SIB - Short Standard Iron Bar
 - CC - Cut Cross
 - CP - Concrete Pin
 - (WIT) - Witness
 - Mess - Measured
 - (AOG) - Annis, O'Sullivan, Vollebek Ltd.
 - (P) - Registered Plan 42482
 - (PI) - Plan 4R-27331
 - (PS) - Plan 5R-13174
 - (P3) - Plan 5R-11443
 - (P4) - Plan 5R-9854
 - (P5) - (STANTEC) Plan dated June 22, 2012
 - (P6) - (STANTEC) Plan dated March 10, 2015
 - (P7) - (AOG) Plan dated November 20, 2017
 - (P8) - (AOG) Plan dated August 25, 2020
 - (P9) - Ref File No. 20814-20
 - (P10) - (AOG) Plan dated September 26, 1988
 - (P10) - (AOG) Plan dated March 27, 2023
 - RW - Retaining Wall
 - U.P. - Utility Pole
 - Acc. - Accepted
 - Elev. - Elevation
 - Vertical Plane - Vertical Plane
 - Horizontal Plane - Horizontal Plane
 - Inclined Plane - Inclined Plane

STRATA PLAN OF SURVEY OF PART OF LOT 18 AND ALL OF LOTS 19 AND 20 (South York Street) AND PART OF LOT 18 AND ALL OF LOTS 19 AND 20 (North George Street) REGISTERED PLAN 42482 CITY OF OTTAWA
 Surveyed by Annis, O'Sullivan, Vollebek Ltd.

Scale 1 : 200
 The intended plot size of the plan is 1219 mm in width by 610 mm in height when plotted at a scale of 1:200.

Metric
 DISTANCES AND COORDINATES SHOWN ON THIS PLAN ARE IN METRES AND CAN BE CONVERTED TO FEET BY DIVIDING BY 0.3048.

Surveyor's Certificate
 I CERTIFY THAT:
 1. This survey and plan comprising sheets 1 to 5 are correct and in accordance with the Surveyors Act, the Surveyors Act and the Land Titles Act and the regulations made under them.
 2. The survey was completed on the 10th day of June, 2024.

MMM DD YYYY Date
 Andrew J. Broxham
 Ontario Land Surveyor
 This plan of survey relates to AOLS Plan Submission Form Number V-

Coordinates are derived from Can-Net 2016 Real Time Network GPS observations referenced to Specified Control Points 01919680005 and 01919680105, MTM Zone 9 (76°30' West Longitude) NAD-83 (original).
 Coordinate values are to urban accuracy in accordance with O. Reg. 216/10.
 .01919680005 Northing 5027191.26 Easting 361496.78
 .01919680105 Northing 5024815.16 Easting 378971.65
 .Point A Northing 5032338.31 Easting 368178.94
 .Point B Northing 5032479.25 Easting 368212.49
 Caution: Coordinates cannot, in themselves, be used to re-establish corners or boundaries shown on this plan.

Elevations are geoidic and are derived from vertical control monument 00119544001, having a published value of 71.174 metres and are referred to the CGVD28 geoidic datum. Elevations can be converted to the CGVD2013 datum by subtracting 0.301 metres.

It is the responsibility of the user of this information to verify that the job bench mark has not been altered or disturbed and that its relative elevation and description agrees with the information shown on this drawing.



DIAGRAM E - TO ILLUSTRATE CONFIGURATION OF PARTS AT GRADE ARCHITECTURAL GROUND FLOOR (Elevation 62.05)

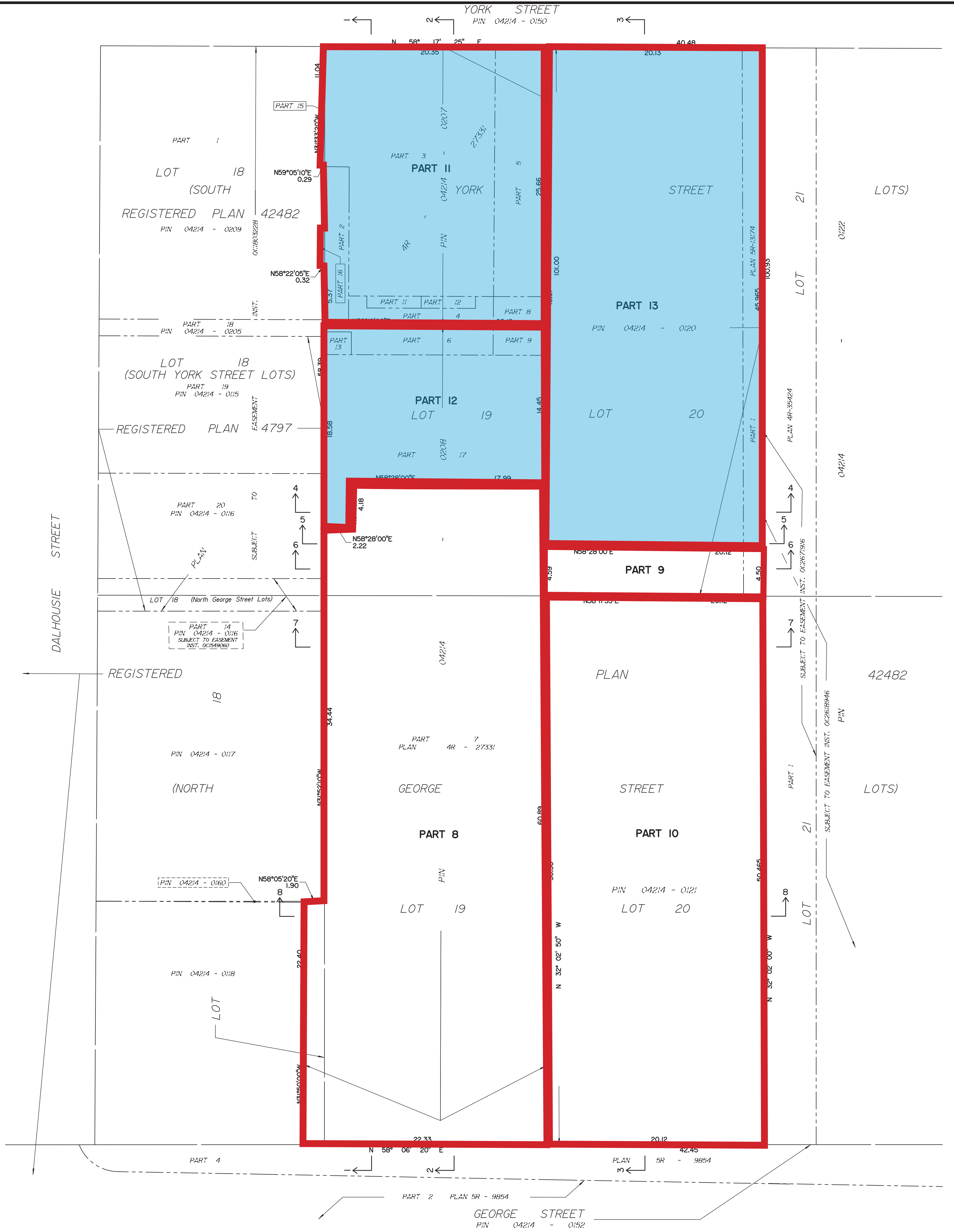


DIAGRAM A - TO ILLUSTRATE CONFIGURATION OF PARTS BELOW FOUNDATION (Elevation 50.0)

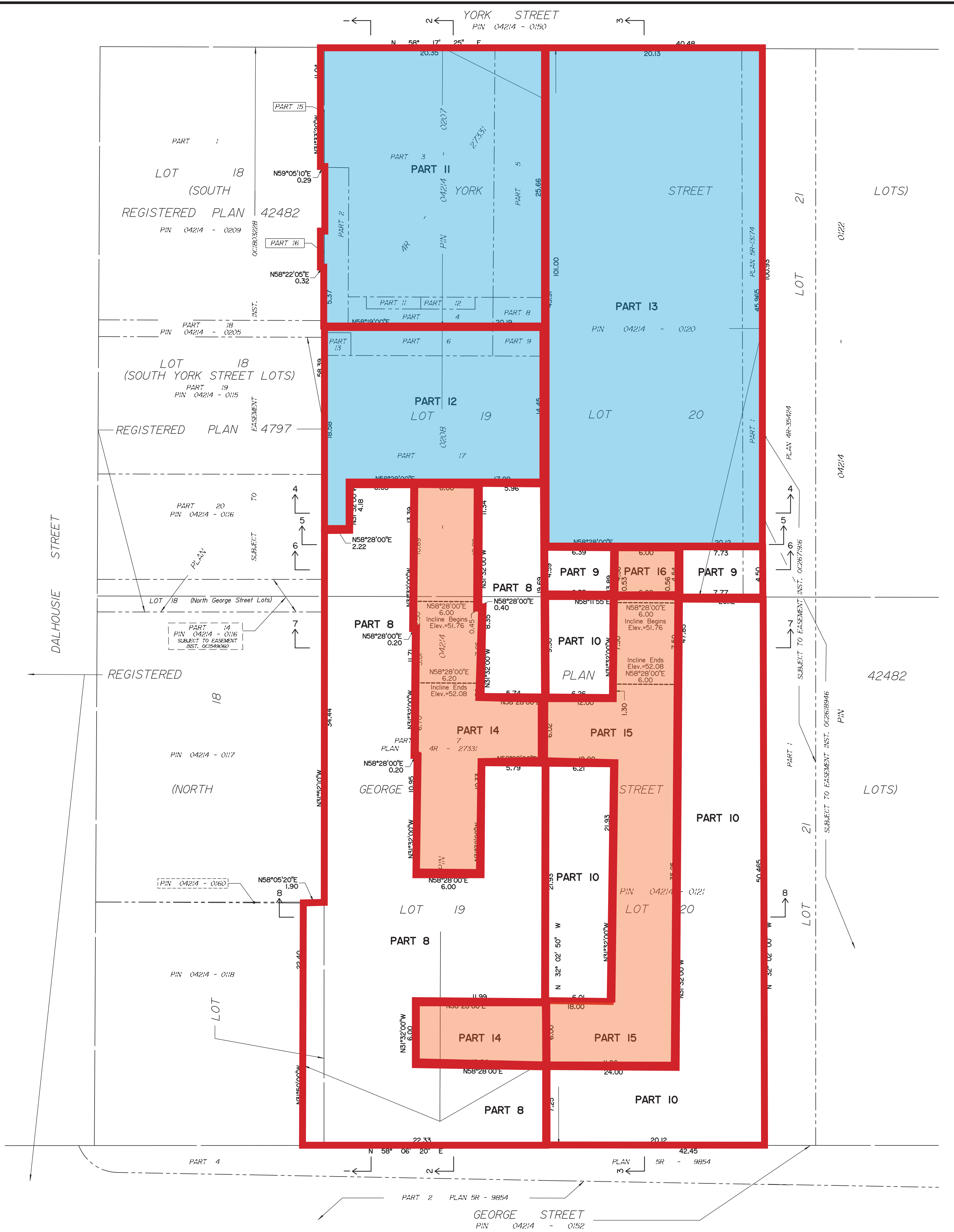
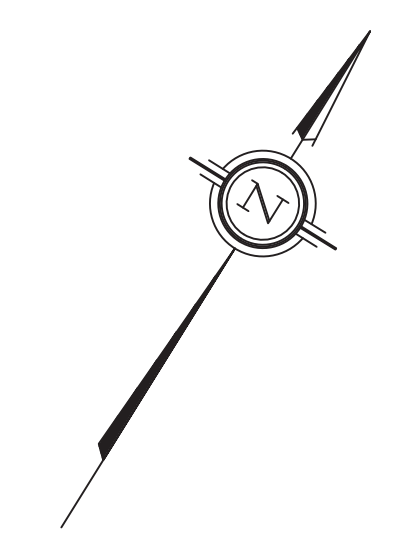


DIAGRAM B - TO ILLUSTRATE CONFIGURATION OF PARTS AT PARKING LEVEL P3 (Elevation 52.35)



Surveyed by Annis, O'Sullivan, Vollebek Ltd.

Scale 1 : 200
 0 0.0 2.0 4.0 6.0 8.0 Metres
 The intended plot size of the plan is 1219 mm in width by 610 mm in height when plotted at a scale of 1:200.

Metric
 DISTANCES AND COORDINATES SHOWN ON THIS PLAN ARE IN METRES AND CAN BE CONVERTED TO FEET BY DIVIDING BY 0.3048.

- Notes & Legend
- Denotes Survey Monument Planted
 - Survey Monument Found
 - IB Iron Bar
 - SIB Standard Iron Bar
 - SSIB Short Standard Iron Bar
 - CC Cut Cross
 - CP Concrete Pin
 - (WIT) Witness
 - Meas. Measured
 - (AOG) Annis, O'Sullivan, Vollebek Ltd.
 - (PI) Registered Plan 42482
 - (PI) Plan 4R-27331
 - (P2) Plan SR-13174
 - (P3) Plan SR-11443
 - (P4) Plan SR-2854
 - (P5) (STANTEC) Plan dated June 22, 2012
 - (P6) (STANTEC) Plan dated March 10, 2015
 - (P7) (AOG) Plan dated November 20, 2017
 - (P8) (AOG) Plan dated August 25, 2020
 - (P8) Ref File No. 20814-20
 - (P9) (AOG) Plan dated September 26, 1988
 - (P10) (AOG) Plan dated March 27, 2023
 - RW Retaining Wall
 - U/P Utility Pole
 - Acc. Accepted
 - Elev. Elevation
 - (H) Horizontal Plane
 - (V) Vertical Plane
 - (I) Inclined Plane

- ↑ See Diagram A
- ↑ See Section 1
- ↑ Upward without limit
- ↓ Downward without limit

All set monumentation are CP's unless otherwise noted.
 Survey monuments set or witnessed where site conditions permitted.
 Distances shown on this plan are ground distances and can be converted to grid distances by multiplying by the combined scale factor of 0.99994.
 Bearings are grid, derived from the southerly limit of York Street shown to be N58°17'25"E on Plan 4R-27331, and are referred to the Central Meridian MTM Zone 9 (76°30' West Longitude) NAD-83 (original).
 Coordinates are derived from Can-Net 2016 Real Time Network GPS observations referenced to Specified Control Points 01919680005 and 01919680105, MTM Zone 9 (76°30' West Longitude) NAD-83 (original).
 Coordinate values are to urban accuracy in accordance with O. Reg. 216/10.

.01919680005	Northing	5027191.26	Easting	361496.76
.01919680105	Northing	5024915.16	Easting	373971.65
.Point A	Northing	5032338.31	Easting	368178.94
.Point B	Northing	5032479.25	Easting	368212.49

Caution: Coordinates cannot, in themselves, be used to re-establish corners or boundaries shown on this plan.

Elevations are geodetic and are derived from vertical control monument 0011954001, having a published value of 71.174 metres and are referred to the CGVD28 geodetic datum. Elevations can be converted to the CGVD2013 datum by subtracting 0.301 metres.

It is the responsibility of the user of this information to verify that the job benchmark has not been altered or disturbed and that its relative elevation and description agrees with the information shown on this drawing.

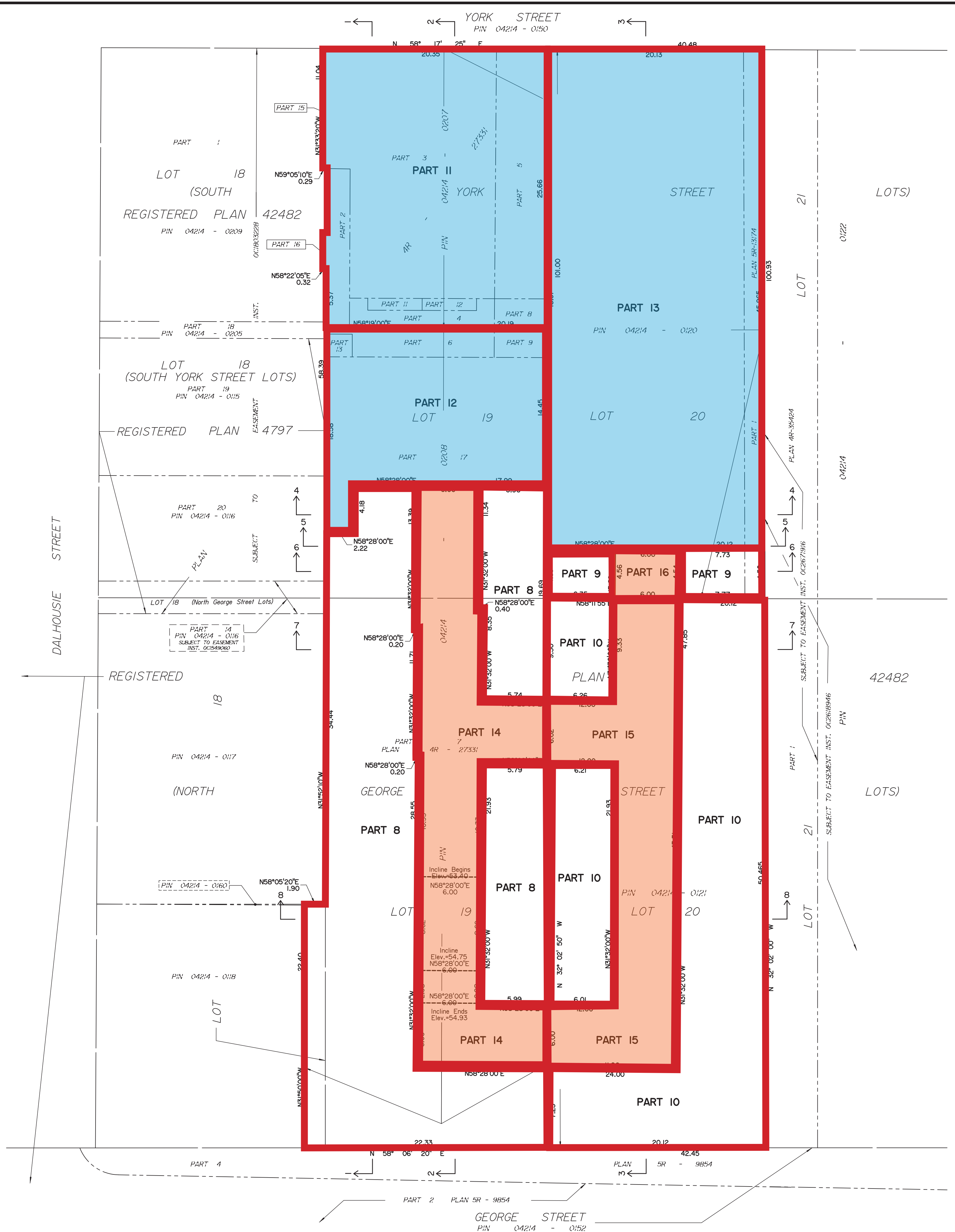


DIAGRAM C - TO ILLUSTRATE CONFIGURATION OF PARTS AT PARKING LEVEL P2 (Elevation 55.20)

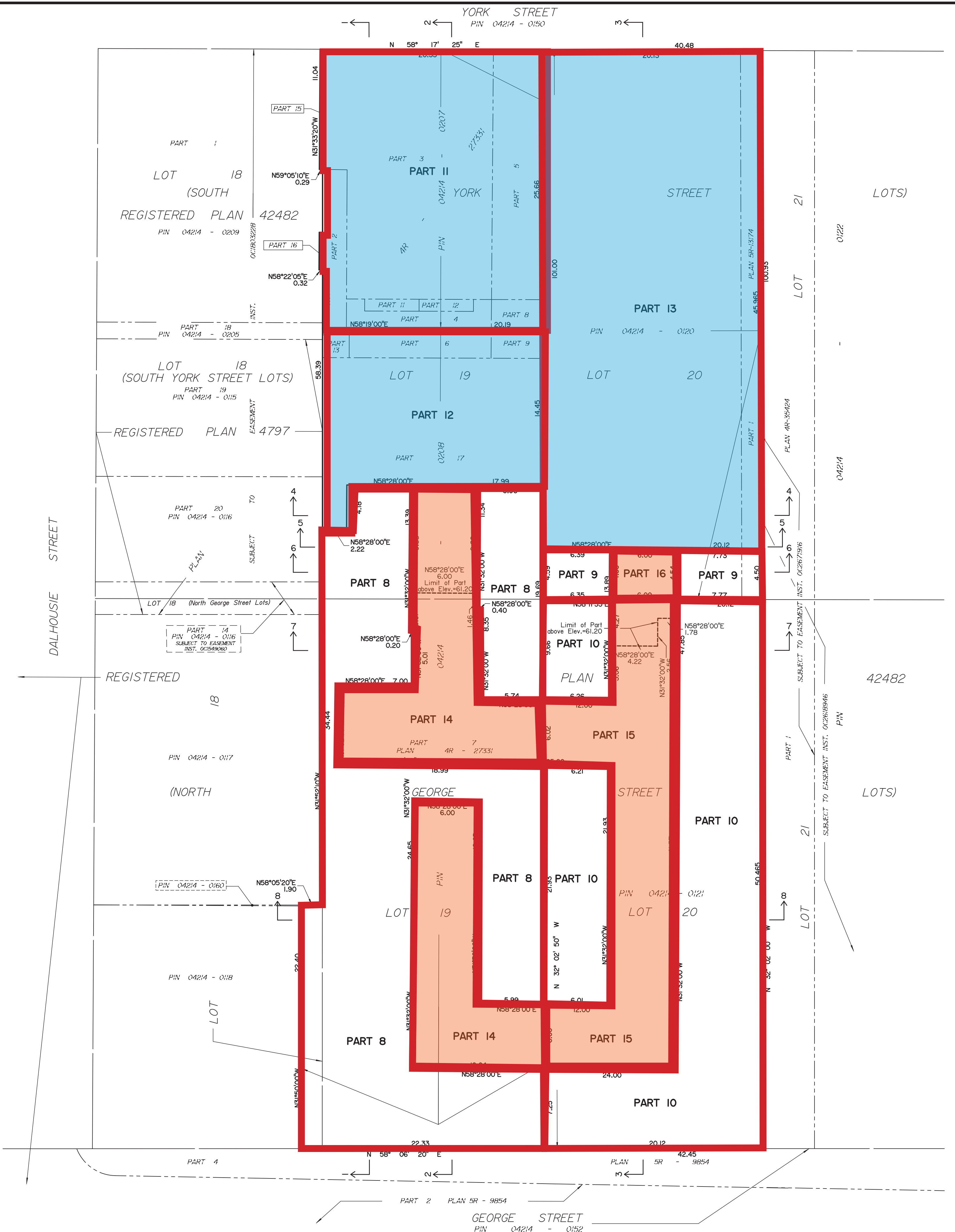
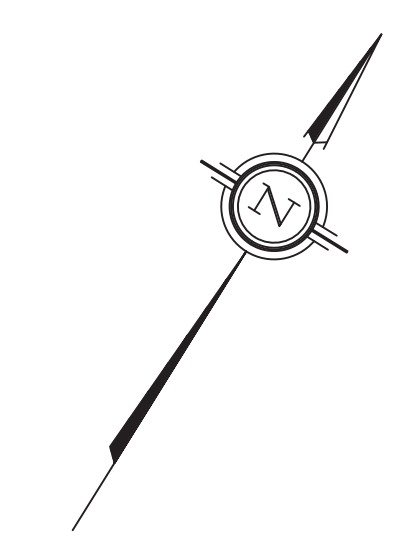


DIAGRAM D - TO ILLUSTRATE CONFIGURATION OF PARTS AT PARKING LEVEL P1 (Elevation 58.05)



Surveyed by Annis, O'Sullivan, Vollebek Ltd.

Scale 1:200

The intended plot size of the plan is 1219 mm in width by 610 mm in height when plotted at a scale of 1:200.

Metric DISTANCES AND COORDINATES SHOWN ON THIS PLAN ARE IN METRES AND CAN BE CONVERTED TO FEET BY DIVIDING BY 0.3048.

- Notes & Legend**
- Denotes Survey Monument Planted
 - Survey Monument Found
 - IB Iron Bar
 - SIB Standard Iron Bar
 - SSIB Short Standard Iron Bar
 - CC Cut Cross
 - CP Concrete Pin
 - (WIT) Witness
 - Meas. Measured
 - (AOG) Annis, O'Sullivan, Vollebek Ltd.
 - (P1) Registered Plan 42482
 - (P1) Plan 4R-27331
 - (P2) Plan SR-13174
 - (P3) Plan SR-14443
 - (P4) Plan SR-8654
 - (P5) (STANTEC) Plan dated June 22, 2012
 - (P6) (STANTEC) Plan dated November 20, 2015
 - (P7) (AOG) Plan dated August 25, 2020
 - (P8) (AOG) Plan dated September 26, 1988
 - (P9) (AOG) Plan dated March 27, 2023
 - (P10) Retaining Wall
 - UP Utility Pole
 - Acc. Accepted
 - Elev. Elevation
 - HP Horizontal Plane
 - VP Vertical Plane
 - IP Inclined Plane

- ↑ See Diagram A
- ↑ See Section 1
- ↑ Upward without limit
- ↓ Downward without limit

All set monumentation are CP's unless otherwise noted.
 Survey monuments set or witnessed where site conditions permitted.
 Distances shown on this plan are ground distances and can be converted to grid distances by multiplying by the combined scale factor of 0.99994.
 Bearings are grid, derived from the southerly limit of York Street shown to be N58°17'25"E on Plan 4R-27331, and are referred to the Central Meridian MTM Zone 9 (76°30' West Longitude) NAD-83 (original).
 Coordinates are derived from Can-Net 2016 Real Time Network GPS observations referenced to Specified Control Points 01919680005 and 01919680105, MTM Zone 9 (76°30' West Longitude) NAD-83 (original).
 Coordinate values are to urban accuracy in accordance with O. Reg. 216/10.

.01919680005	Northing	5027191.26	Easting	361496.76
.01919680105	Northing	5024915.16	Easting	373971.65
.Point A	Northing	5032338.31	Easting	368178.94
.Point B	Northing	5032479.25	Easting	369212.49

Caution: Coordinates cannot, in themselves, be used to re-establish corners or boundaries shown on this plan.

Elevations are geodetic and are derived from vertical control monument 00119544001, having a published value of 71.174 metres and are referred to the CGVD28 geodetic datum. Elevations can be converted to the CGVD2013 datum by subtracting 0.301 metres.

It is the responsibility of the user of this information to verify that the job benchmark has not been altered or disturbed and that its relative elevation and description agrees with the information shown on this drawing.

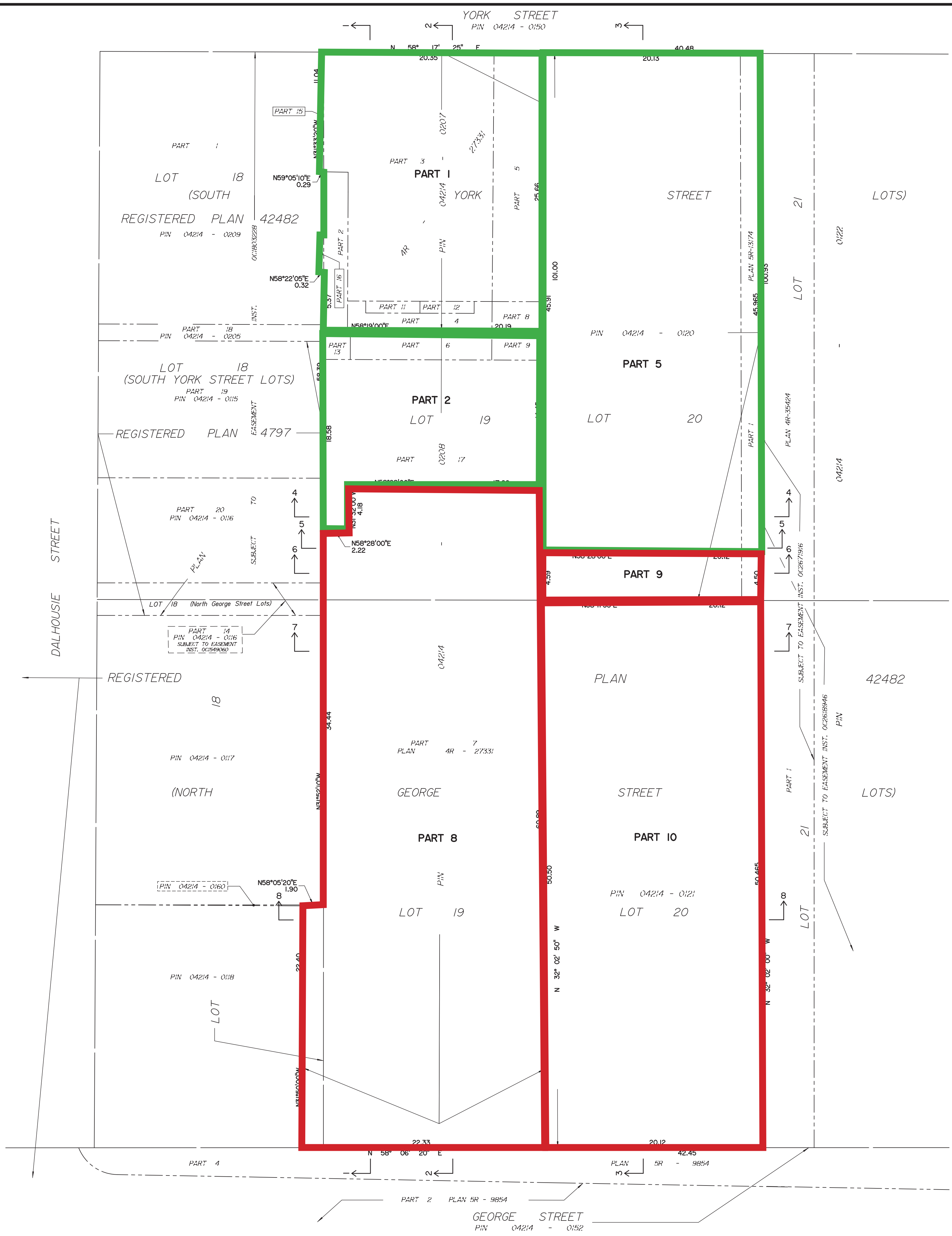
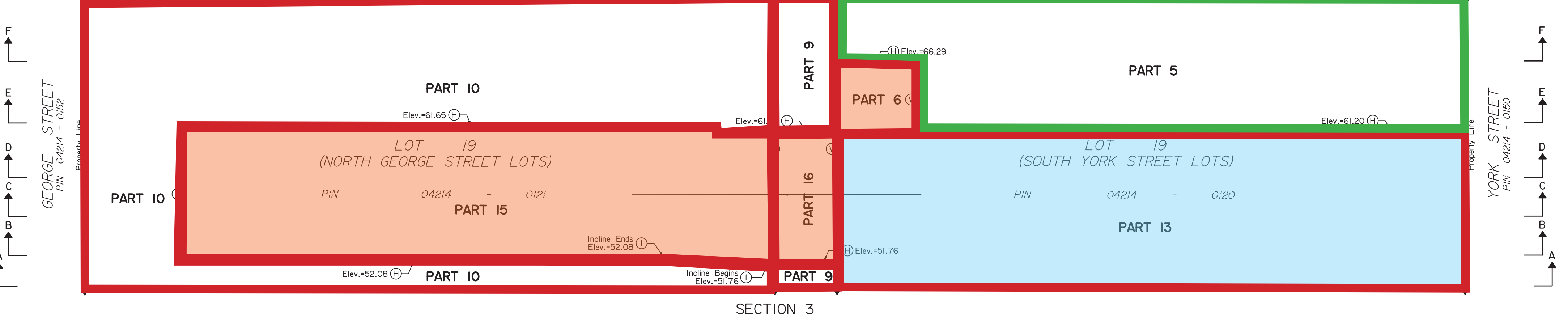
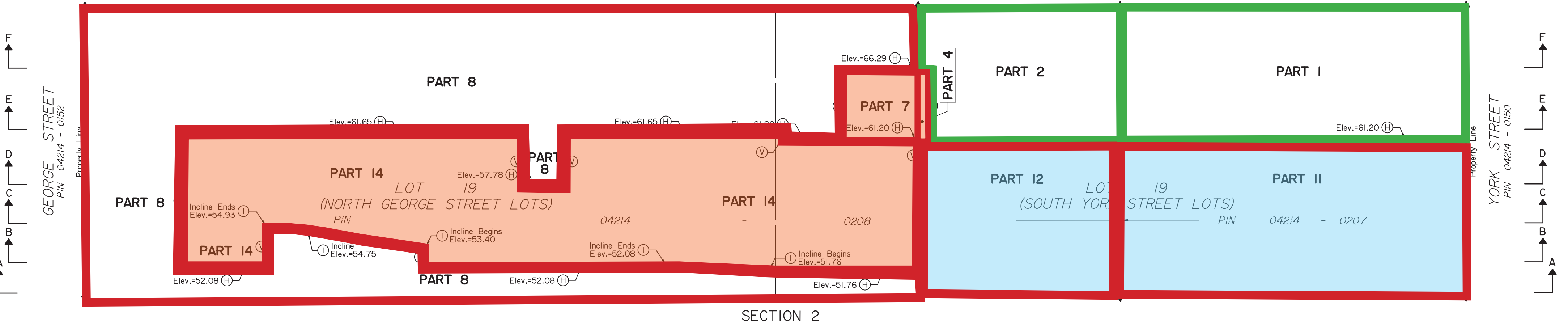
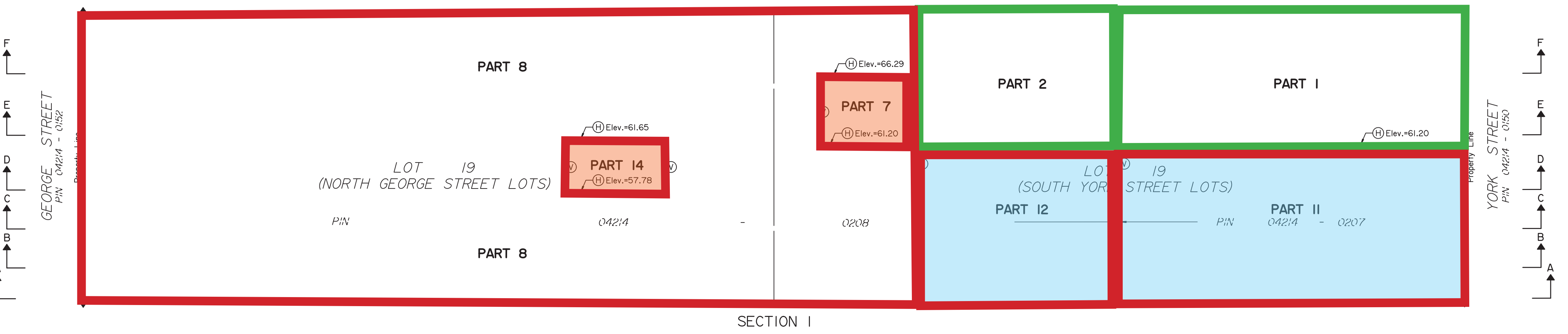
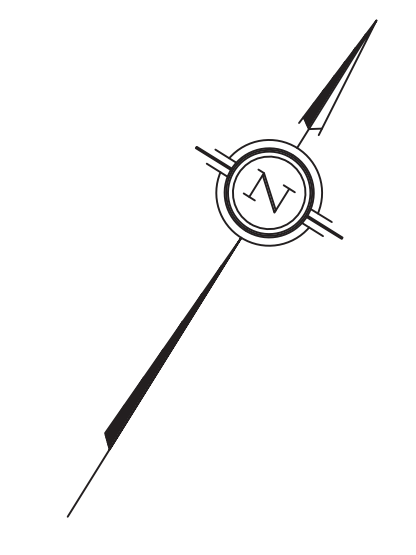


DIAGRAM F - TO ILLUSTRATE CONFIGURATION OF PARTS AT SECOND FLOOR (Elevation 66.55)



Surveyed by Annis, O'Sullivan, Vollebek Ltd.

Scale 1:200

The intended plot size of the plan is 1219 mm in width by 610 mm in height when plotted at a scale of 1:200.

Metric DISTANCES AND COORDINATES SHOWN ON THIS PLAN ARE IN METRES AND CAN BE CONVERTED TO FEET BY DIVIDING BY 0.3048.

Notes & Legend

- Denotes Survey Monument Planted
- Denotes Survey Monument Found
- IB - Iron Bar
- SIB - Standard Iron Bar
- SSIB - Short Standard Iron Bar
- CC - Cut Cross
- CP - Concrete Pin
- (WIT) - Witness
- Mes. - Measured
- (AOG) - Annis, O'Sullivan, Vollebek Ltd.
- (P1) - Registered Plan 42482
- (P2) - Plan 4R-27331
- (P3) - Plan SR-13174
- (P4) - Plan SR-11443
- (P5) - Plan SR-9854
- (P6) - (STANTEC) Plan dated June 22, 2012
- (P7) - (STANTEC) Plan dated March 10, 2015
- (P8) - (AOG) Plan dated November 20, 2017
- (P9) - (AOG) Plan dated August 25, 2020
- (P10) - (AOG) Plan dated September 26, 1988
- (P11) - (AOG) Plan dated March 27, 2023
- RW - Retaining Wall
- UP - Utility Pole
- Acc. - Accepted
- Elev. - Elevation
- HP - Horizontal Plane
- VP - Vertical Plane
- IP - Inclined Plane
- ↑ - See Diagram A
- ↕ - See Section 1
- ↑ - Upward without limit
- ↓ - Downward without limit

All set monumentation are CP's unless otherwise noted.

Survey monuments set or witnessed where site conditions permitted.

Distances shown on this plan are ground distances and can be converted to grid distances by multiplying by the combined scale factor of 0.9994.

Bearings are grid, derived from the southerly limit of York Street shown to be N58°17'25"E on Plan 4R-27331, and are referred to the Central Meridian MTM Zone 9 (76°30' West Longitude) NAD-83 (original).

Coordinates are derived from Can-Net 2016 Real Time Network GPS observations referenced to Specified Control Points 01919680005 and 01919680105, MTM Zone 9 (76°30' West Longitude) NAD-83 (original).

Coordinate values are to urban accuracy in accordance with O. Reg. 216/10.

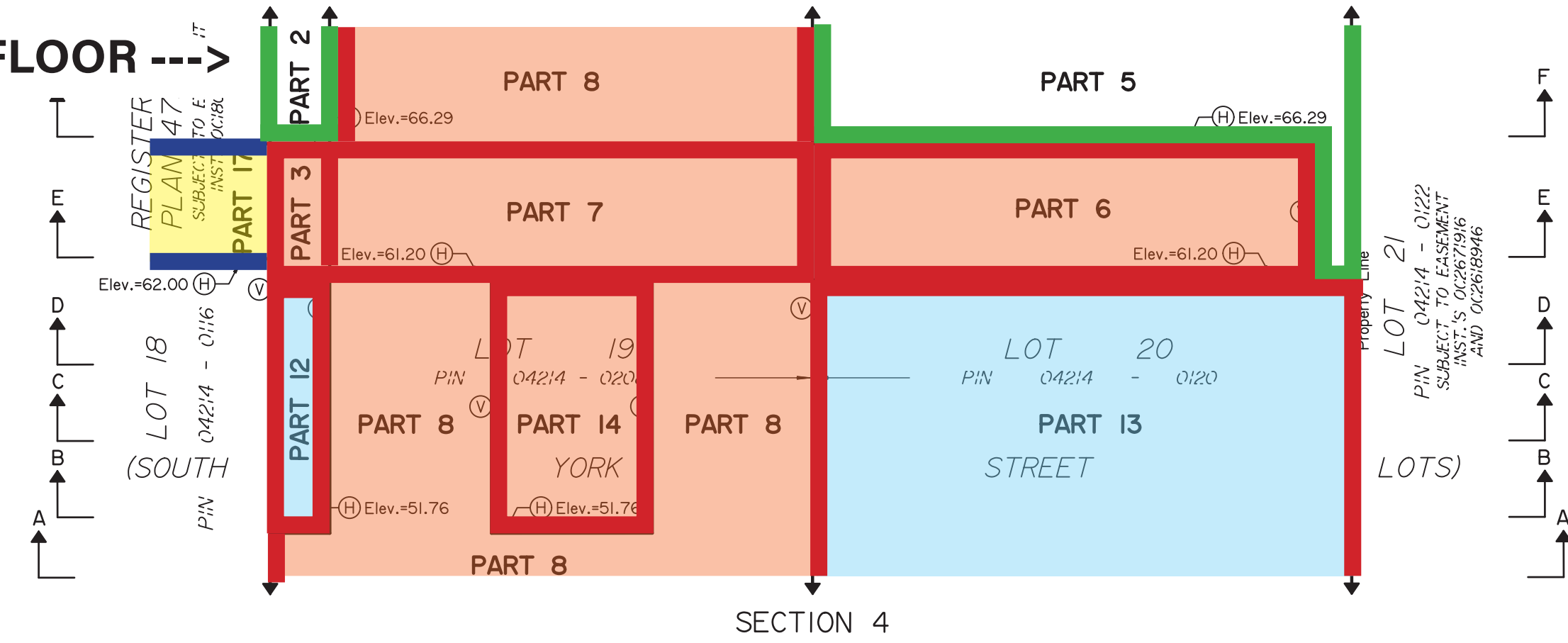
01919680005	Northing	5027191.26	Eastings	361496.76
01919680105	Northing	5024915.16	Eastings	373971.65
Point A	Northing	5032338.31	Eastings	368178.94
Point B	Northing	5032479.25	Eastings	369212.49

Caution: Coordinates cannot, in themselves, be used to re-establish corners or boundaries shown on this plan.

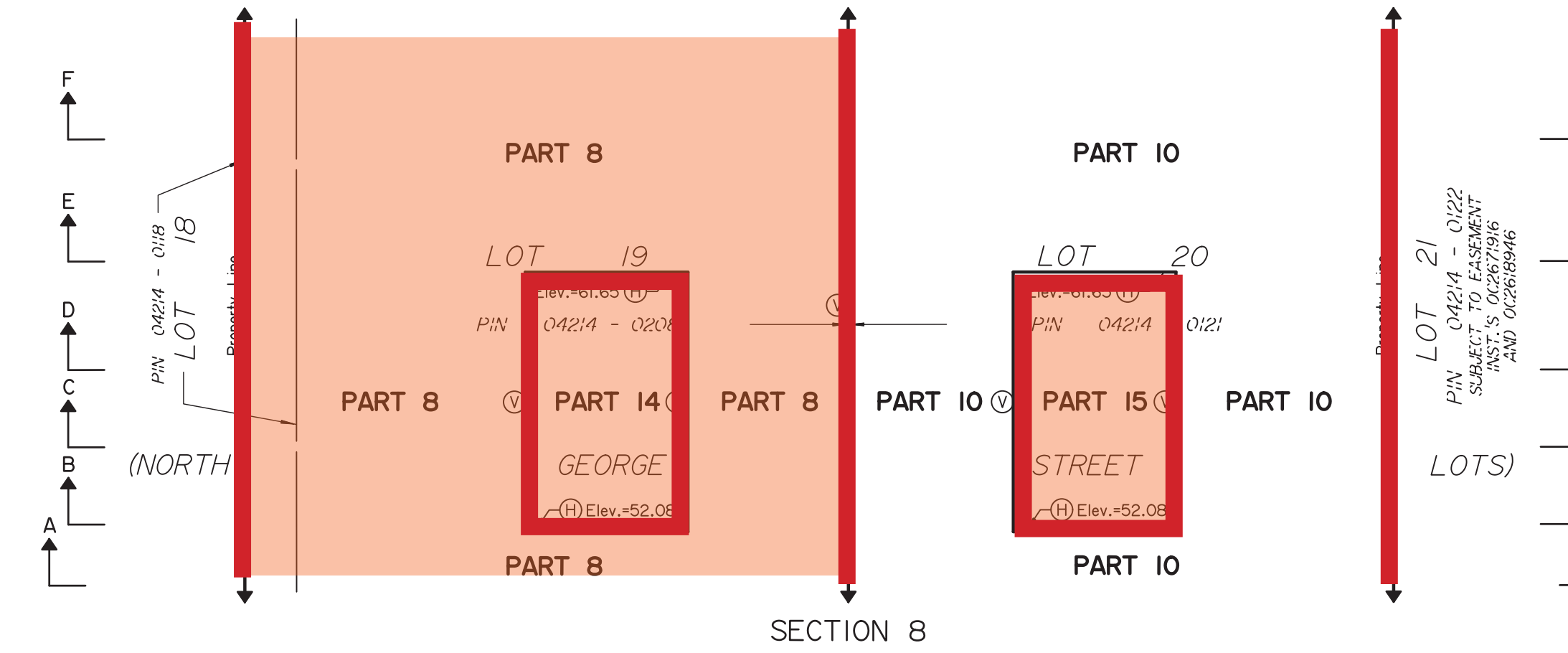
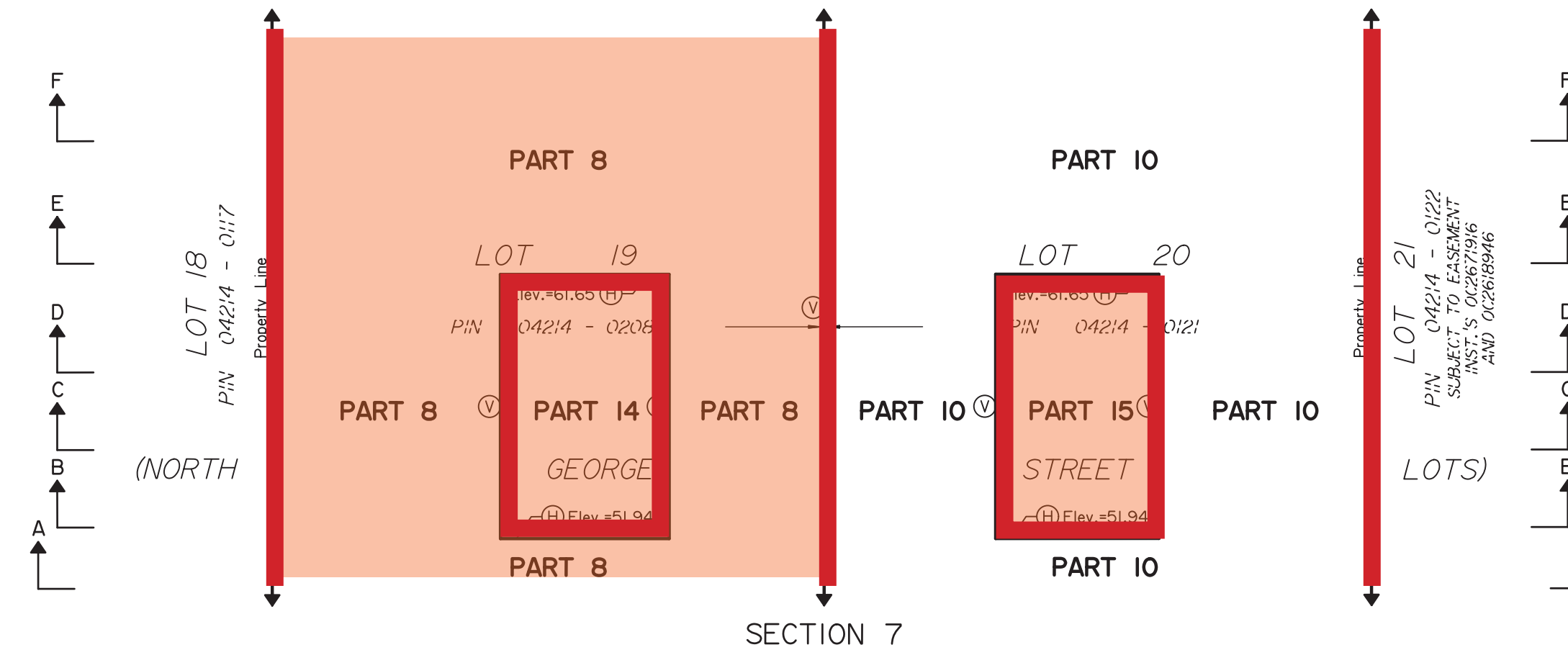
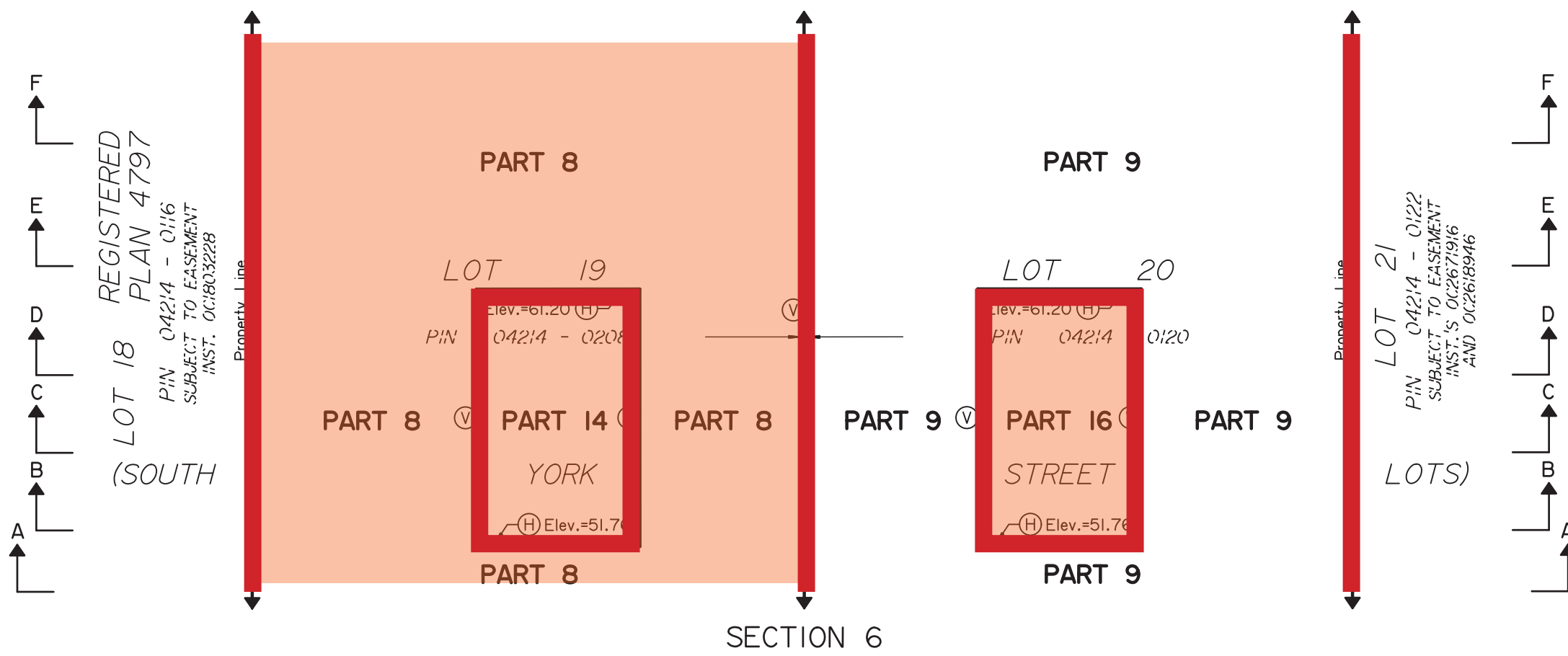
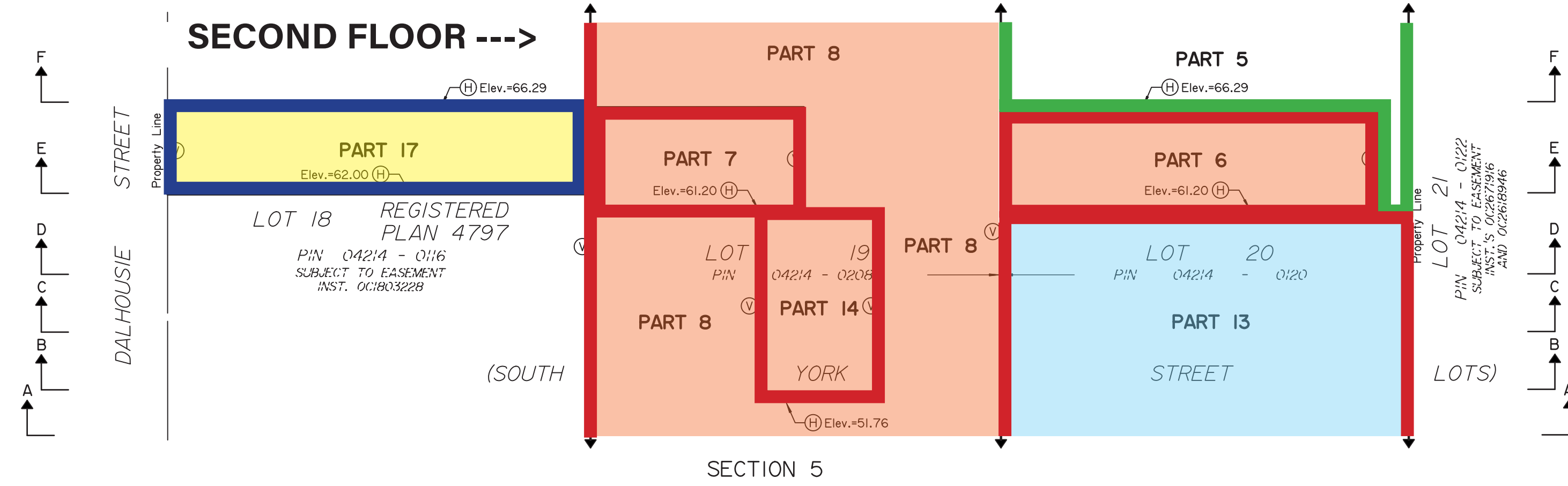
Elevations are geodetic and are derived from vertical control monument 00119544001, having a published value of 71.174 metres and are referred to the CGVD2013 geodetic datum. Elevations can be converted to the CGVD2013 datum by subtracting 0.301 metres.

It is the responsibility of the user of this information to verify that the job benchmark has not been altered or disturbed and that its relative elevation and description agrees with the information shown on this drawing.

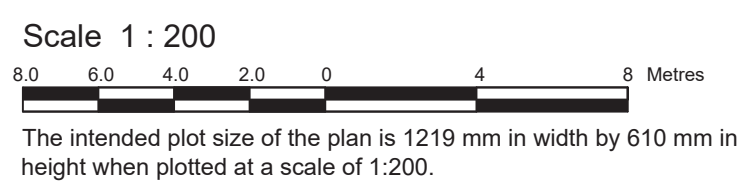
SECOND FLOOR



SECOND FLOOR



Surveyed by Annis, O'Sullivan, Vollebek Ltd.



The intended plot size of the plan is 1219 mm in width by 610 mm in height when plotted at a scale of 1:200.
Metric DISTANCES AND COORDINATES SHOWN ON THIS PLAN ARE IN METRES AND CAN BE CONVERTED TO FEET BY DIVIDING BY 0.3048.

Notes & Legend

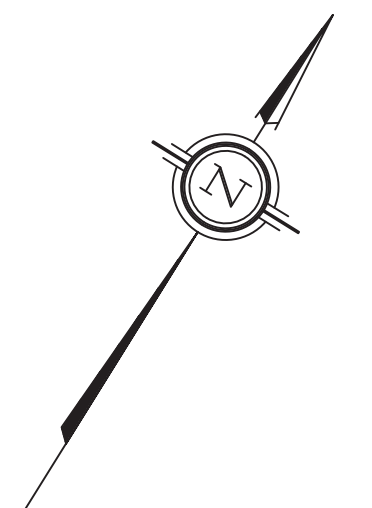
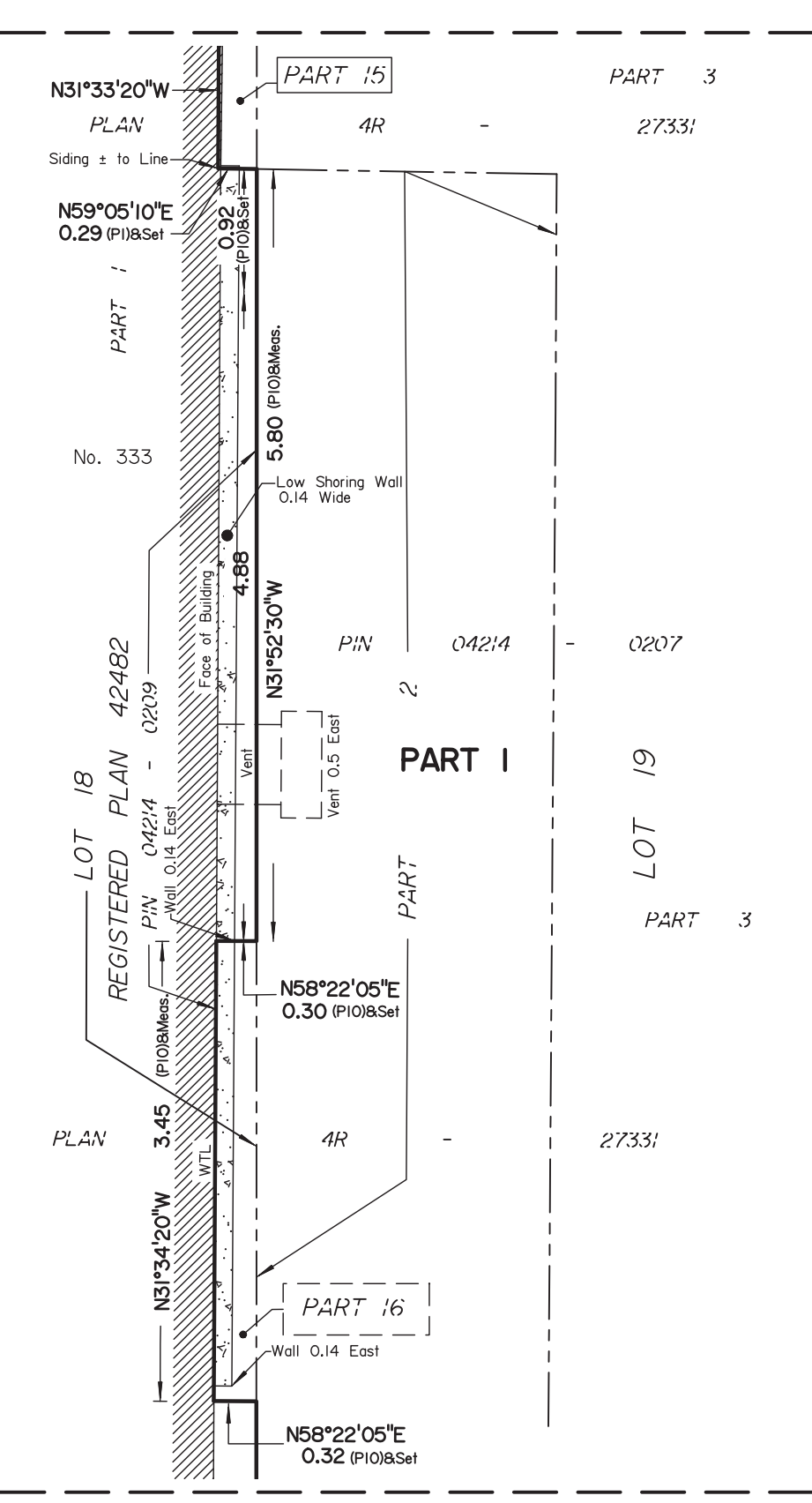
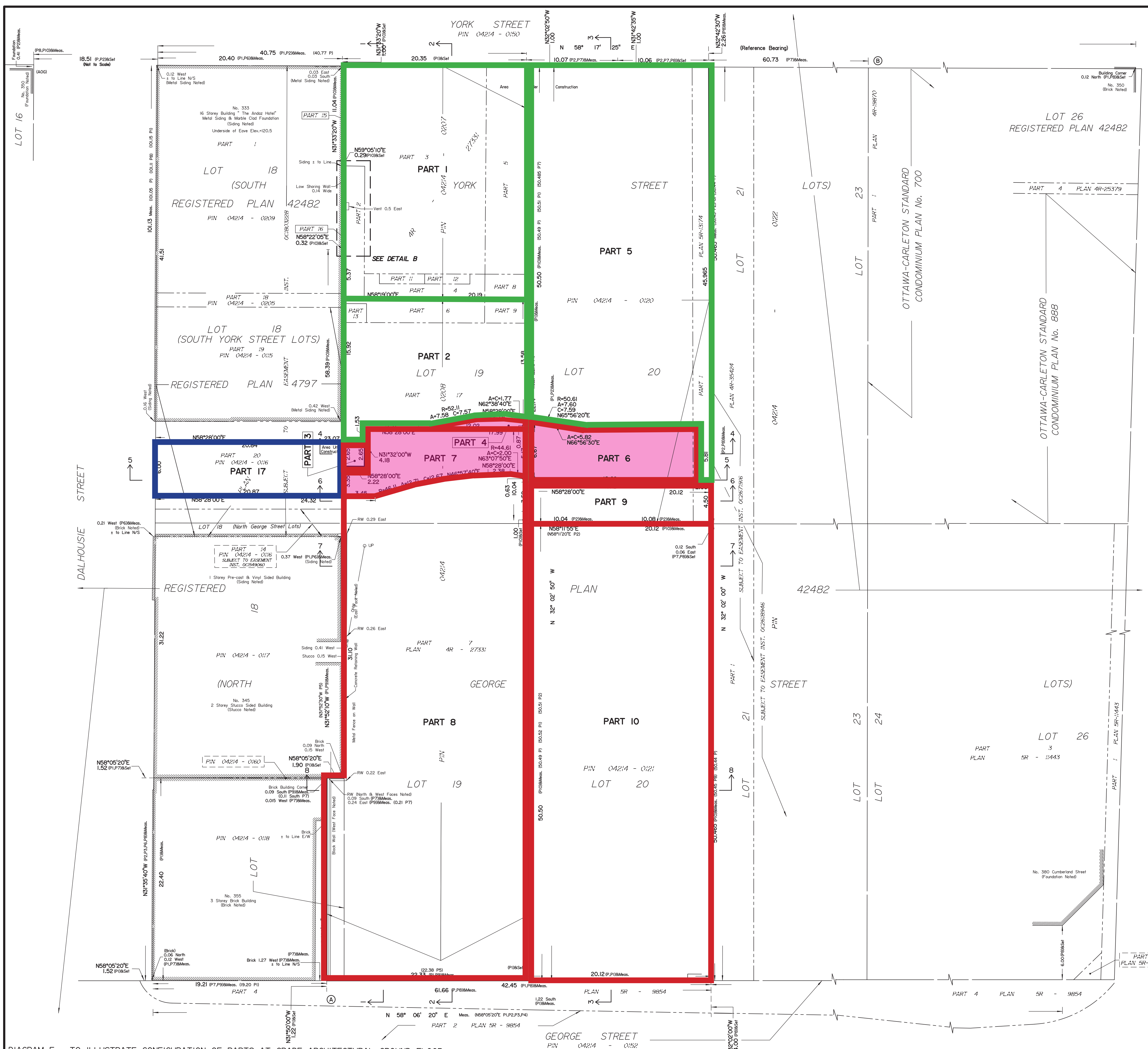
- Denotes Survey Monument Planted
- Survey Monument Found
- IB - Iron Bar
- SIB - Standard Iron Bar
- SSIB - Short Standard Iron Bar
- CC - Cut Cross
- CP - Concrete Pin
- (WIT) Witness
- Meas. - Measured
- (AOG) - Annis, O'Sullivan, Vollebek Ltd.
- (P1) - Registered Plan 42482
- (P1) - Plan SR-27331
- (P2) - Plan SR-13174
- (P3) - Plan SR-11443
- (P4) - Plan SR-9884
- (P5) - (STANTEC) Plan dated June 22, 2012
- (P6) - (STANTEC) Plan dated March 10, 2015
- (P7) - (AOG) Plan dated November 20, 2017
- (P8) - (AOG) Plan dated August 25, 2020
- (P9) - (AOG) Plan dated September 26, 1988
- (P10) - (AOG) Plan dated March 27, 2023
- RW - Retaining Wall
- UP - Utility Pole
- Acc. - Accepted
- Elev. - Elevation
- HP - Horizontal Plane
- VP - Vertical Plane
- IP - Inclined Plane
- - See Diagram A
- - - - - See Section 1
- ↑ - Upward without limit
- ↓ - Downward without limit

All set monumentation are CP's unless otherwise noted.
Survey monuments set or witnessed where site conditions permitted.
Distances shown on this plan are ground distances and can be converted to grid distances by multiplying by the combined scale factor of 0.99994.
Bearings are grid, derived from the southerly limit of York Street shown to be N81°1'22"E on Plan SR-27331, and are referred to the Central Meridian MTM Zone 9 (76°30' West Longitude) NAD-83 (original).
Coordinates are derived from Can-Net 2016 Real Time Network GPS observations referenced to Specified Control Points 01919680005 and 01919680105, MTM Zone 9 (76°30' West Longitude) NAD-83 (original).
Coordinate values are to urban accuracy in accordance with O. Reg. 216/10.

.01919680005	Northing	5027191.26	Easting	361496.76
.01919680105	Northing	5024915.16	Easting	373971.65
.Point A	Northing	5032338.31	Easting	368176.94
.Point B	Northing	5032479.25	Easting	368212.49

Caution: Coordinates cannot, in themselves, be used to re-establish corners or boundaries shown on this plan.
Elevations are geodetic and are derived from vertical control monument 00119544001, having a published value of 71.174 metres and are referred to the CGVD28 geodetic datum. Elevations can be converted to the CGVD2013 datum by subtracting 0.301 metres.

It is the responsibility of the user of this information to verify that the job benchmark has not been altered or disturbed and that its relative elevation and description agrees with the information shown on this drawing.



SCHEDULE OF PARTS																
LOCATED ON SHEET																
DIAGRAM TO SHOW PLAN VIEW OF PARTS																
SECTION TO SHOW VERTICAL EXTENT OF PARTS																
1	2	3	4	5	6	7	8	9	10	11	12	13	14	15	16	17
1	2	3	4	5	6	7	8	9	10	11	12	13	14	15	16	17

SCHEDULE			
PART	LOT	REGISTERED PLAN	PIN
1	Part of 18 (South York Street)		Part of PIN 04214-0207
2	Part of 19 (South York Street)		Part of PIN 04214-0208
3	Part of 20 (South York Street)		Part of PIN 04214-0120
4	Part of 19 (South York Street)		Part of PIN 04214-0208
5	Part of 20 (South York Street)		Part of PIN 04214-0120
6	Part of 18, 19 (North George Street)		Part of PIN 04214-0208
7	Part of 18, 19 (South York Street)		Part of PIN 04214-0208
8	Part of 20 (South York Street)		Part of PIN 04214-0120
9	Part of 20 (North George Street)	42482	Part of PIN 04214-0121
10	Part of 18, 19 (South York Street)		Part of PIN 04214-0207
11	Part of 19 (South York Street)		Part of PIN 04214-0208
12	Part of 20 (South York Street)		Part of PIN 04214-0120
13	Part of 19 (North George Street)		Part of PIN 04214-0208
14	Part of 20 (North George Street)		Part of PIN 04214-0121
15	Part of 18 (South York Street)		Part of PIN 04214-0120
16	Part of 20 (South York Street)	4797	Part of PIN 04214-0116
17	Part of 18 (South York Street)		Part of PIN 04214-0116

Part 17: Subject to easement inst. OC1803228.

- Notes & Legend**
- IB - Survey Monument Planted
 - IB - Survey Monument Found
 - SIB - Standard Iron Bar
 - SIB - Short Standard Iron Bar
 - CC - Cut Cross
 - CP - Concrete Pin
 - (WIT) - Witness
 - Mess - Measured
 - (AOG) - Annis, O'Sullivan, Vollebek Ltd.
 - (P) - Registered Plan 42482
 - (PI) - Plan 4R-27331
 - (PS) - Plan 5R-13174
 - (P3) - Plan 5R-11443
 - (P4) - Plan 5R-9854
 - (P5) - (STANTEC) Plan dated June 22, 2012
 - (P6) - (STANTEC) Plan dated March 10, 2015
 - (P7) - (AOG) Plan dated November 20, 2017
 - (P8) - (AOG) Plan dated August 25, 2020
 - (P9) - Ref File No. 20814-20
 - (P10) - (AOG) Plan dated September 26, 1988
 - (AOG) Plan dated March 27, 2023
 - RW - Retaining Wall
 - U.P. - Utility Pole
 - Acc. - Accepted
 - Elev. - Elevation
 - Vertical Plane - Vertical Plane
 - Horizontal Plane - Horizontal Plane
 - Inclined Plane - Inclined Plane

STRATA PLAN OF SURVEY OF PART OF LOT 18 AND ALL OF LOTS 19 AND 20 (South York Street) AND PART OF LOT 18 AND ALL OF LOTS 19 AND 20 (North George Street) REGISTERED PLAN 42482 CITY OF OTTAWA
 Surveyed by Annis, O'Sullivan, Vollebek Ltd.

Scale 1 : 200
 The intended plot size of the plan is 1219 mm in width by 610 mm in height when plotted at a scale of 1:200.

Metric
 DISTANCES AND COORDINATES SHOWN ON THIS PLAN ARE IN METRES AND CAN BE CONVERTED TO FEET BY DIVIDING BY 0.3048.

Surveyor's Certificate
 I CERTIFY THAT:
 1. This survey and plan comprising sheets 1 to 5 are correct and in accordance with the Surveyors Act, the Surveyors Act and the Land Titles Act and the regulations made under them.
 2. The survey was completed on the 10th day of June, 2024.

MMM DD YYYY Date
 Andrew J. Broxham
 Ontario Land Surveyor
 This plan of survey relates to AOLS Plan Submission Form Number V-

Coordinates are derived from Can-Net 2016 Real Time Network GPS observations referenced to Specified Control Points 01919680005 and 01919680105, MTM Zone 9 (76°30' West Longitude) NAD-83 (original).
 Coordinate values are to urban accuracy in accordance with O. Reg. 216/10.
 .01919680005 Northing 5027191.26 Easting 361496.78
 .01919680105 Northing 5024815.16 Easting 378971.65
 .Point A Northing 5032338.31 Easting 368178.94
 .Point B Northing 5032479.25 Easting 368212.49
 Caution: Coordinates cannot, in themselves, be used to re-establish corners or boundaries shown on this plan.

Elevations are geoidic and are derived from vertical control monument 00119544001, having a published value of 71.174 metres and are referred to the CGVD28 geoidic datum. Elevations can be converted to the CGVD2013 datum by subtracting 0.301 metres.

It is the responsibility of the user of this information to verify that the job bench mark has not been altered or disturbed and that its relative elevation and description agrees with the information shown on this drawing.



DIAGRAM E - TO ILLUSTRATE CONFIGURATION OF PARTS AT GRADE ARCHITECTURAL GROUND FLOOR (Elevation 62.05)

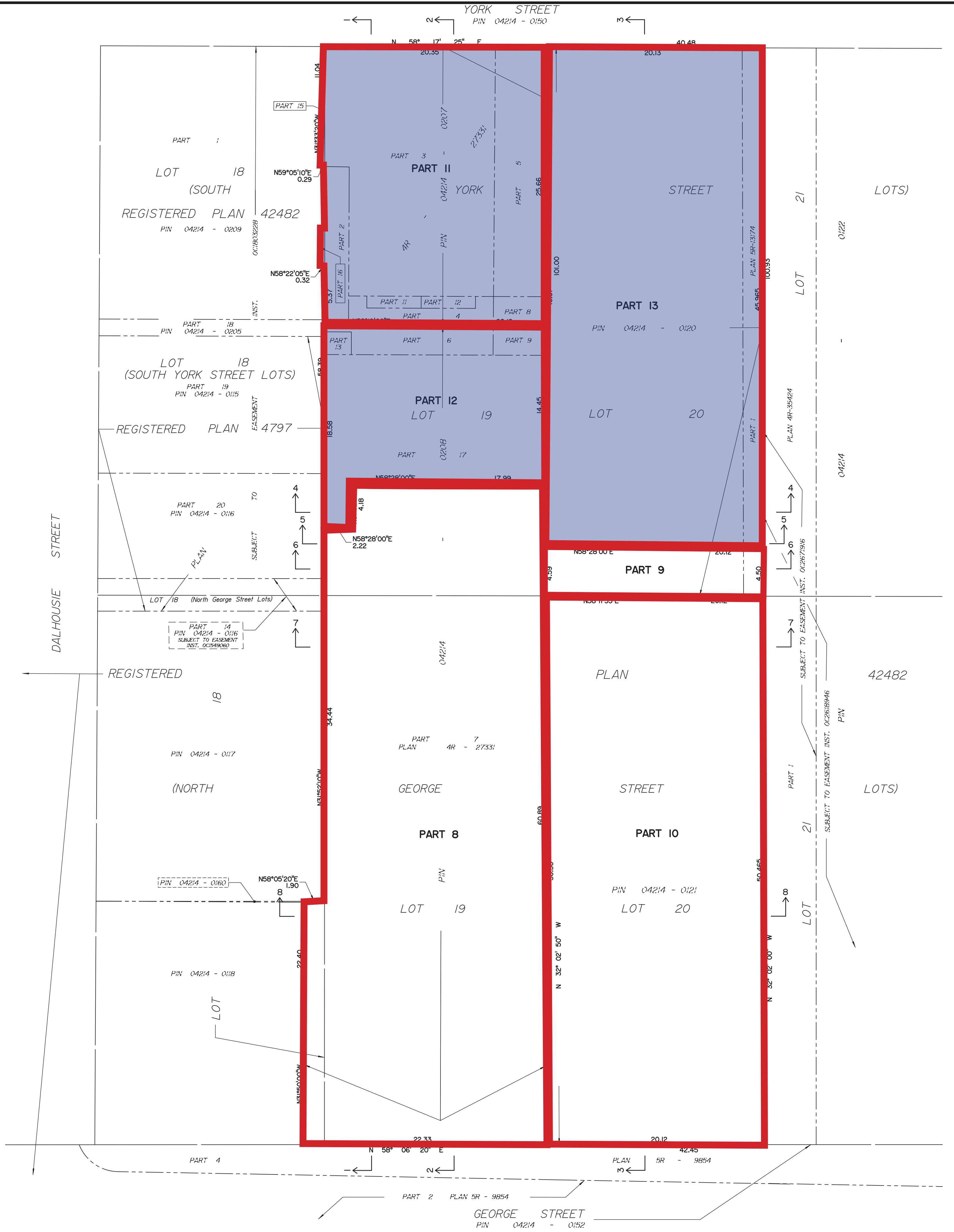


DIAGRAM A - TO ILLUSTRATE CONFIGURATION OF PARTS BELOW FOUNDATION (Elevation 50.0)

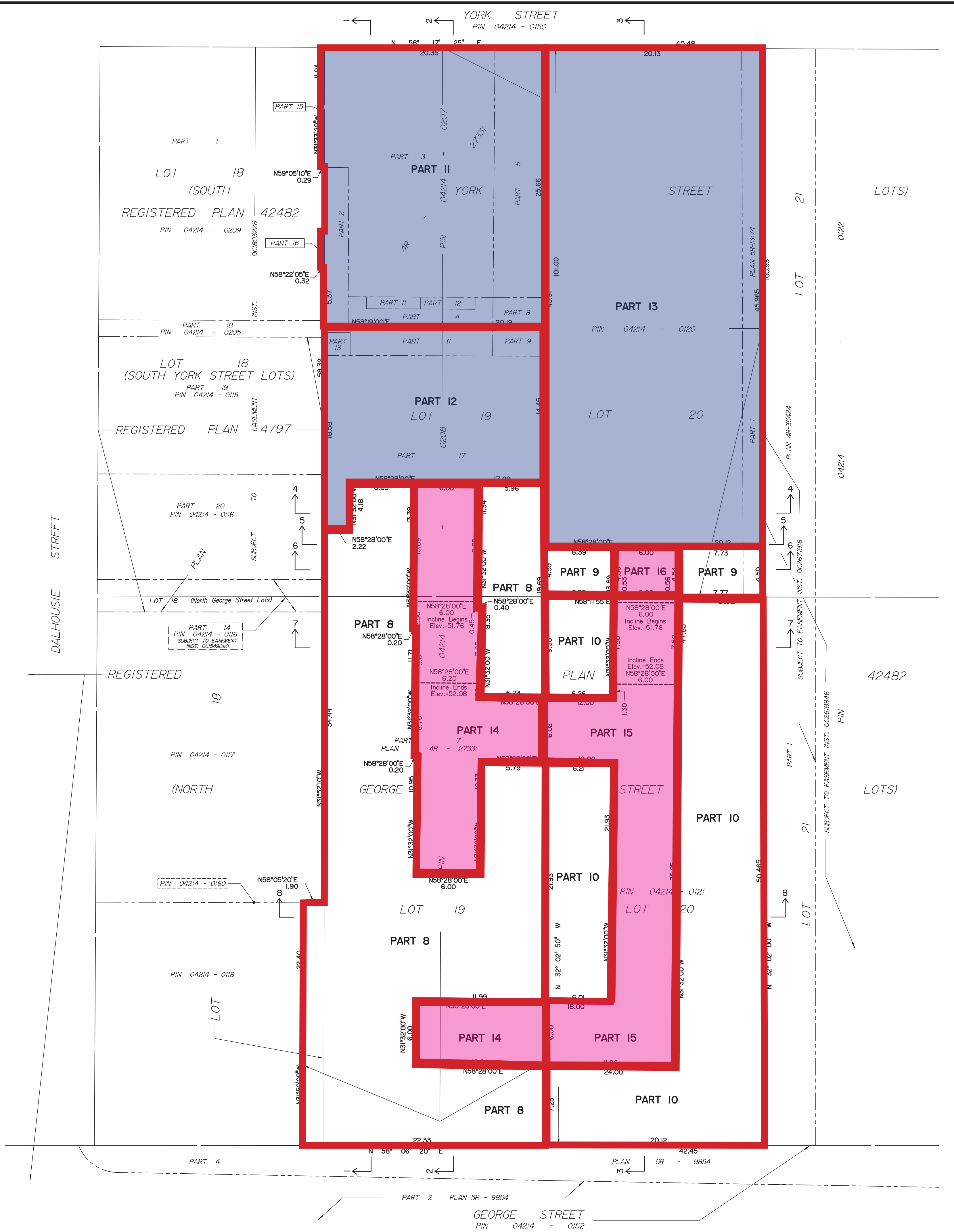
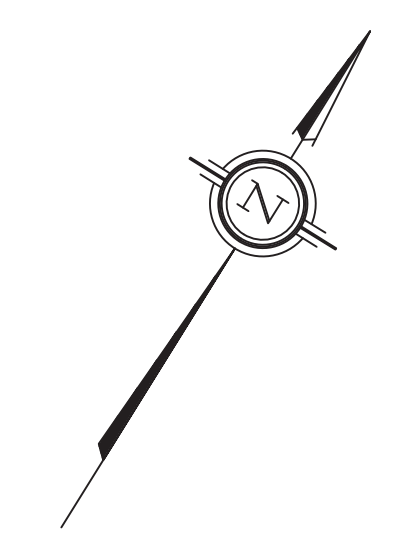


DIAGRAM B - TO ILLUSTRATE CONFIGURATION OF PARTS AT PARKING LEVEL P3 (Elevation 52.35)



Surveyed by Annis, O'Sullivan, Vollebek Ltd.

Scale 1 : 200
 0 0.0 2.0 4.0 6.0 8.0 Metres
 The intended plot size of this plan is 1219 mm in width by 610 mm in height when plotted at a scale of 1:200.

Metric
 DISTANCES AND COORDINATES SHOWN ON THIS PLAN ARE IN METRES AND CAN BE CONVERTED TO FEET BY DIVIDING BY 0.3048.

- Notes & Legend
- Denotes Survey Monument Planted
 - Survey Monument Found
 - IB Iron Bar
 - SIB Standard Iron Bar
 - SSIB Short Standard Iron Bar
 - CC Cut Cross
 - CP Concrete Pin
 - (WIT) Witness
 - Meas. Measured
 - (AOG) Annis, O'Sullivan, Vollebek Ltd.
 - (PI) Registered Plan 42482
 - (PI1) Plan 4R-27331
 - (PI2) Plan SR-13174
 - (PI3) Plan SR-11443
 - (PI4) Plan SR-2854
 - (PI5) (STANTEC) Plan dated June 22, 2012
 - (PI6) (AOG) Plan dated November 20, 2017
 - (PI7) (AOG) Plan dated August 25, 2020
 - (PI8) Ref File No. 20814-20
 - (PI9) (AOG) Plan dated September 26, 1988
 - (PI10) (AOG) Plan dated March 27, 2023
 - RW Retaining Wall
 - U/P Utility Pole
 - Acc. Accepted
 - Elev. Elevation
 - (H) Horizontal Plane
 - (V) Vertical Plane
 - (I) Inclined Plane

- ↑ See Diagram A
- ↑ See Section 1
- ↑ Upward without limit
- ↓ Downward without limit

All set monumentation are CP's unless otherwise noted.
 Survey monuments set or witnessed where site conditions permitted.
 Distances shown on this plan are ground distances and can be converted to grid distances by multiplying by the combined scale factor of 0.99994.
 Bearings are grid, derived from the southerly limit of York Street shown to be N58°17'25"E on Plan 4R-27331, and are referred to the Central Meridian MTM Zone 9 (76°30' West Longitude) NAD-83 (original).
 Coordinates are derived from Can-Net 2016 Real Time Network GPS observations referenced to Specified Control Points 01919680005 and 01919680105, MTM Zone 9 (76°30' West Longitude) NAD-83 (original).
 Coordinate values are to urban accuracy in accordance with O. Reg. 216/10.

.01919680005	Northing	5027191.26	Easting	361496.76
.01919680105	Northing	5024915.16	Easting	373971.65
.Point A	Northing	5032338.31	Easting	368178.94
.Point B	Northing	5032479.25	Easting	368212.49

Caution: Coordinates cannot, in themselves, be used to re-establish corners or boundaries shown on this plan.

Elevations are geodetic and are derived from vertical control monument 0011954001, having a published value of 71.174 metres and are referred to the CGVD28 geodetic datum. Elevations can be converted to the CGVD2013 datum by subtracting 0.301 metres.

It is the responsibility of the user of this information to verify that the job benchmark has not been altered or disturbed and that its relative elevation and description agrees with the information shown on this drawing.

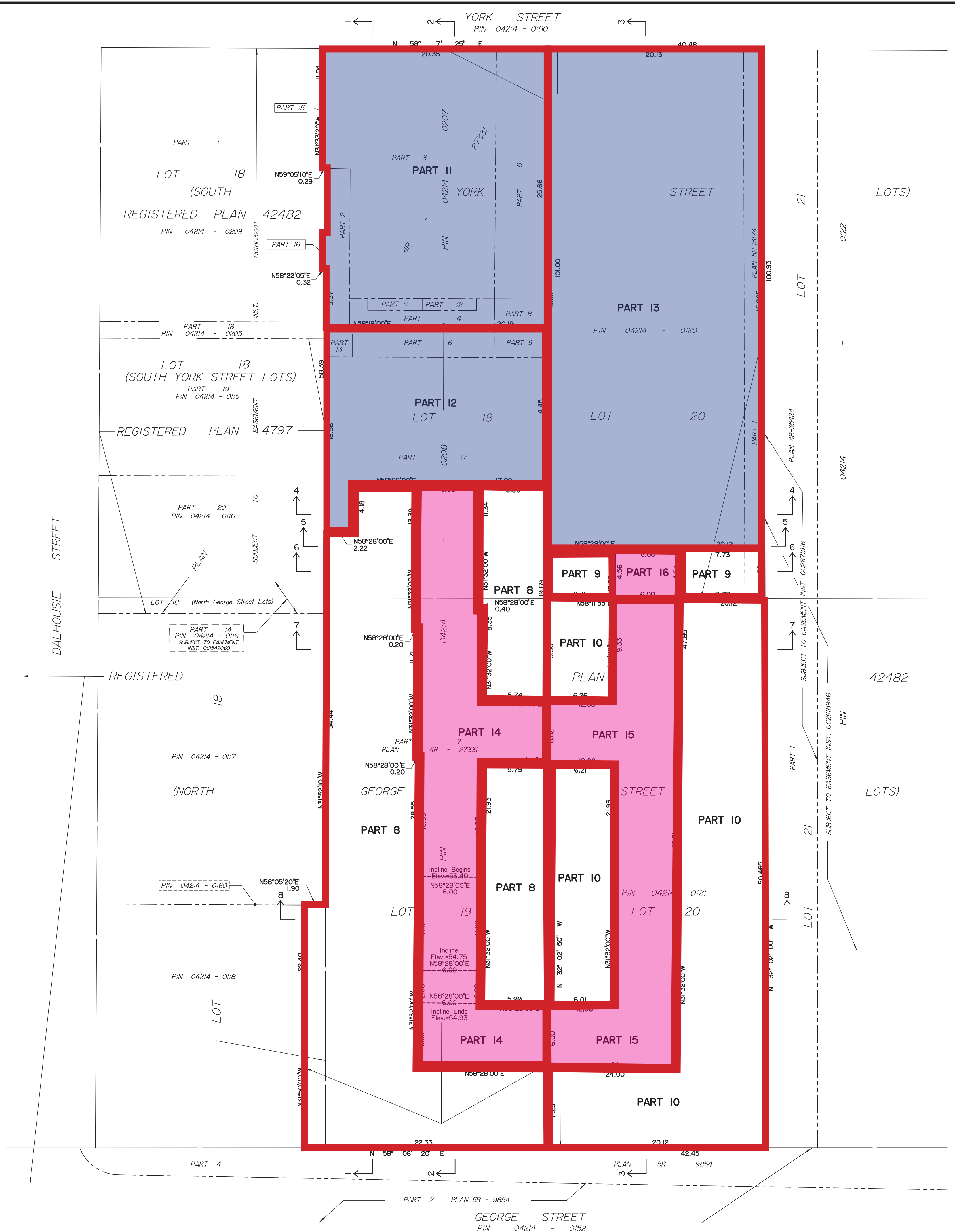


DIAGRAM C - TO ILLUSTRATE CONFIGURATION OF PARTS AT PARKING LEVEL P2 (Elevation 55.20)

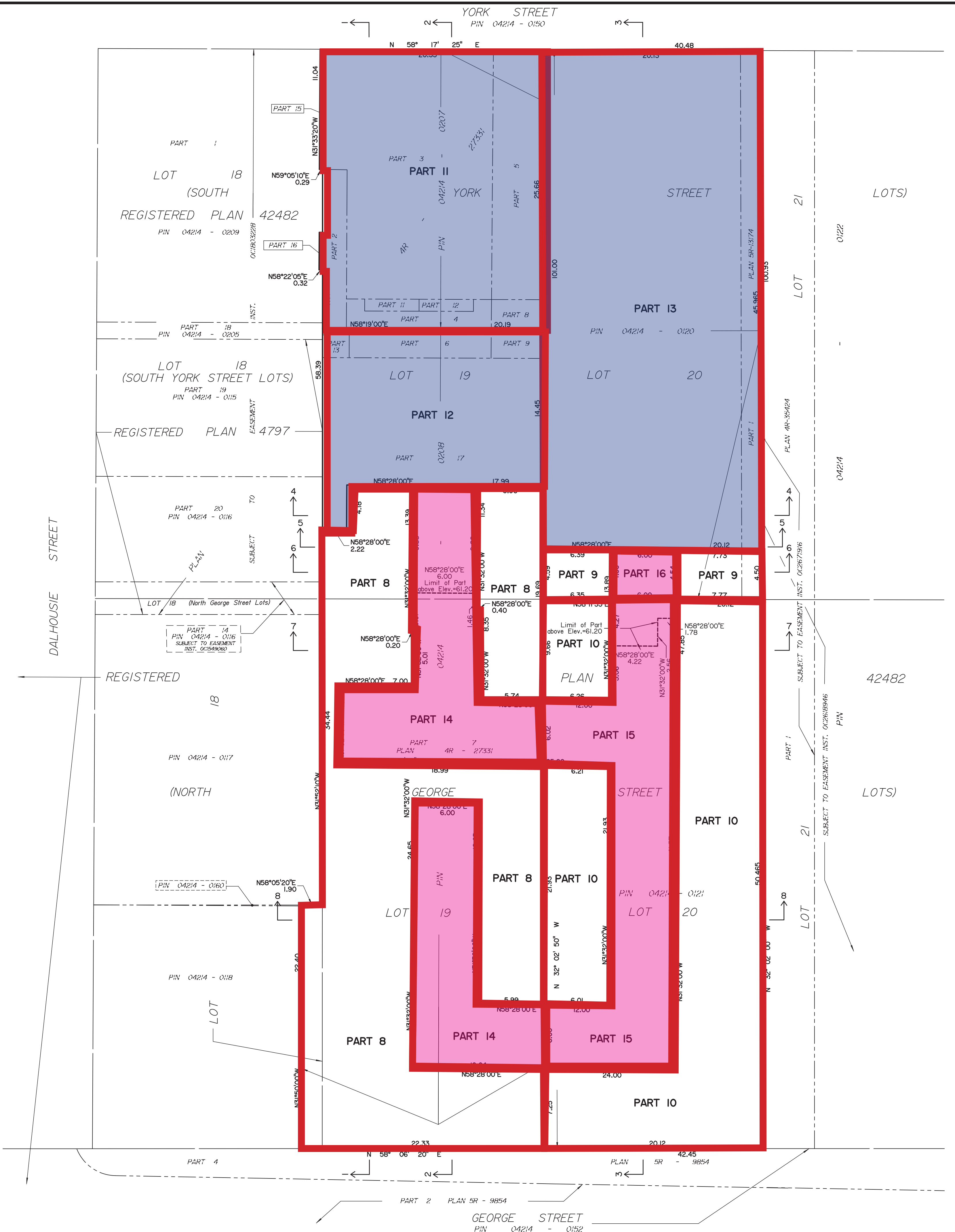
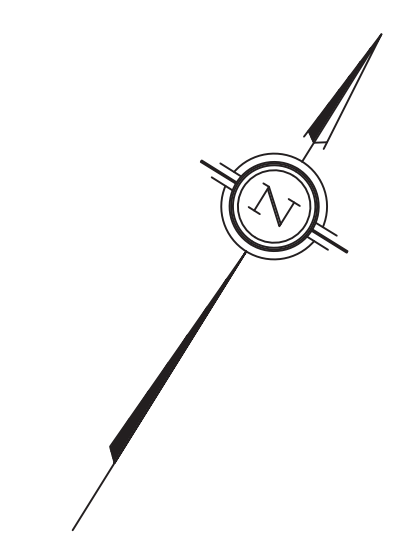
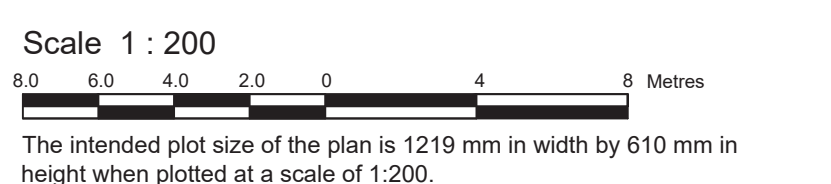


DIAGRAM D - TO ILLUSTRATE CONFIGURATION OF PARTS AT PARKING LEVEL P1 (Elevation 58.05)



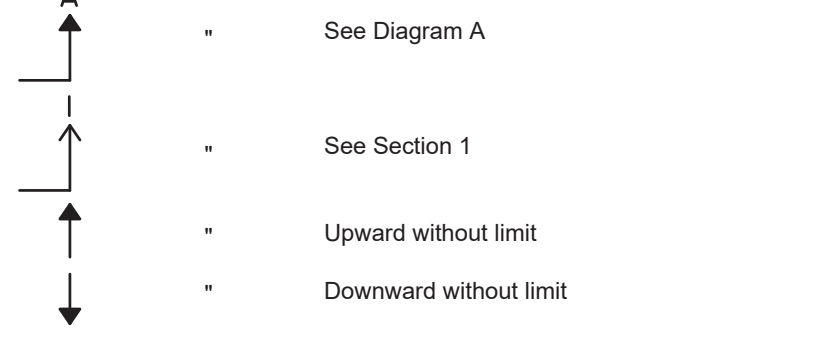
Surveyed by Annis, O'Sullivan, Vollebek Ltd.



Metric DISTANCES AND COORDINATES SHOWN ON THIS PLAN ARE IN METRES AND CAN BE CONVERTED TO FEET BY DIVIDING BY 0.3048.

Notes & Legend

—□—	Denotes	Survey Monument Planted
—■—		Survey Monument Found
— —		Iron Bar
—S B—		Standard Iron Bar
—SS B—		Short Standard Iron Bar
—C C—		Cut Cross
—C P—		Concrete Pin
—(W T)—		Witness
—Mes.—		Measured
—(AOG)—		Annis, O'Sullivan, Vollebek Ltd.
—(P)—		Registered Plan 42482
—(P1)—		Plan 4R-27331
—(P2)—		Plan SR-13174
—(P3)—		Plan SR-14443
—(P4)—		Plan SR-9854
—(P5)—		(STANTEC) Plan dated June 22, 2012
—(P6)—		(STANTEC) Plan dated November 20, 2015
—(P7)—		(AOG) Plan dated August 25, 2020
—(P8)—		(AOG) Plan dated September 26, 1988
—(P9)—		(AOG) Plan dated March 27, 2023
—(P10)—		(AOG) Plan dated September 26, 1988
—RW—		Retaining Wall
—U P—		Utility Pole
—Acc.—		Accepted
—Elev.—		Elevation
—(H)—		Horizontal Plane
—(V)—		Vertical Plane
—(I)—		Inclined Plane



All set monumentation are CP's unless otherwise noted.
 Survey monuments set or witnessed where site conditions permitted.
 Distances shown on this plan are ground distances and can be converted to grid distances by multiplying by the combined scale factor of 0.99994.
 Bearings are grid, derived from the southerly limit of York Street shown to be N58°17'25"E on Plan 4R-27331, and are referred to the Central Meridian MTM Zone 9 (76°30' West Longitude) NAD-83 (original).
 Coordinates are derived from Can-Net 2016 Real Time Network GPS observations referenced to Specified Control Points 01919680005 and 01919680105, MTM Zone 9 (76°30' West Longitude) NAD-83 (original).
 Coordinate values are to urban accuracy in accordance with O. Reg. 216/10.

.01919680005	Northing	5027191.26	Easting	361496.76
.01919680105	Northing	5024915.16	Easting	373971.65
.Point A	Northing	5032338.31	Easting	368178.94
.Point B	Northing	5032479.25	Easting	369212.49

Caution: Coordinates cannot, in themselves, be used to re-establish corners or boundaries shown on this plan.

Elevations are geodetic and are derived from vertical control monument 00119544001, having a published value of 71.174 metres and are referred to the CGVD28 geodetic datum. Elevations can be converted to the CGVD2013 datum by subtracting 0.301 metres.

It is the responsibility of the user of this information to verify that the job benchmark has not been altered or disturbed and that its relative elevation and description agrees with the information shown on this drawing.

