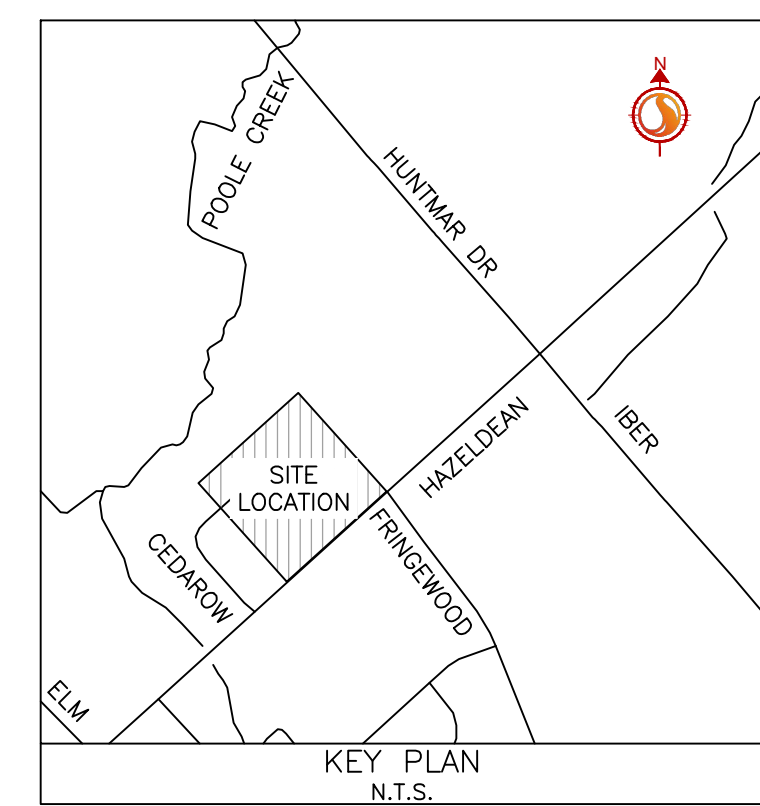
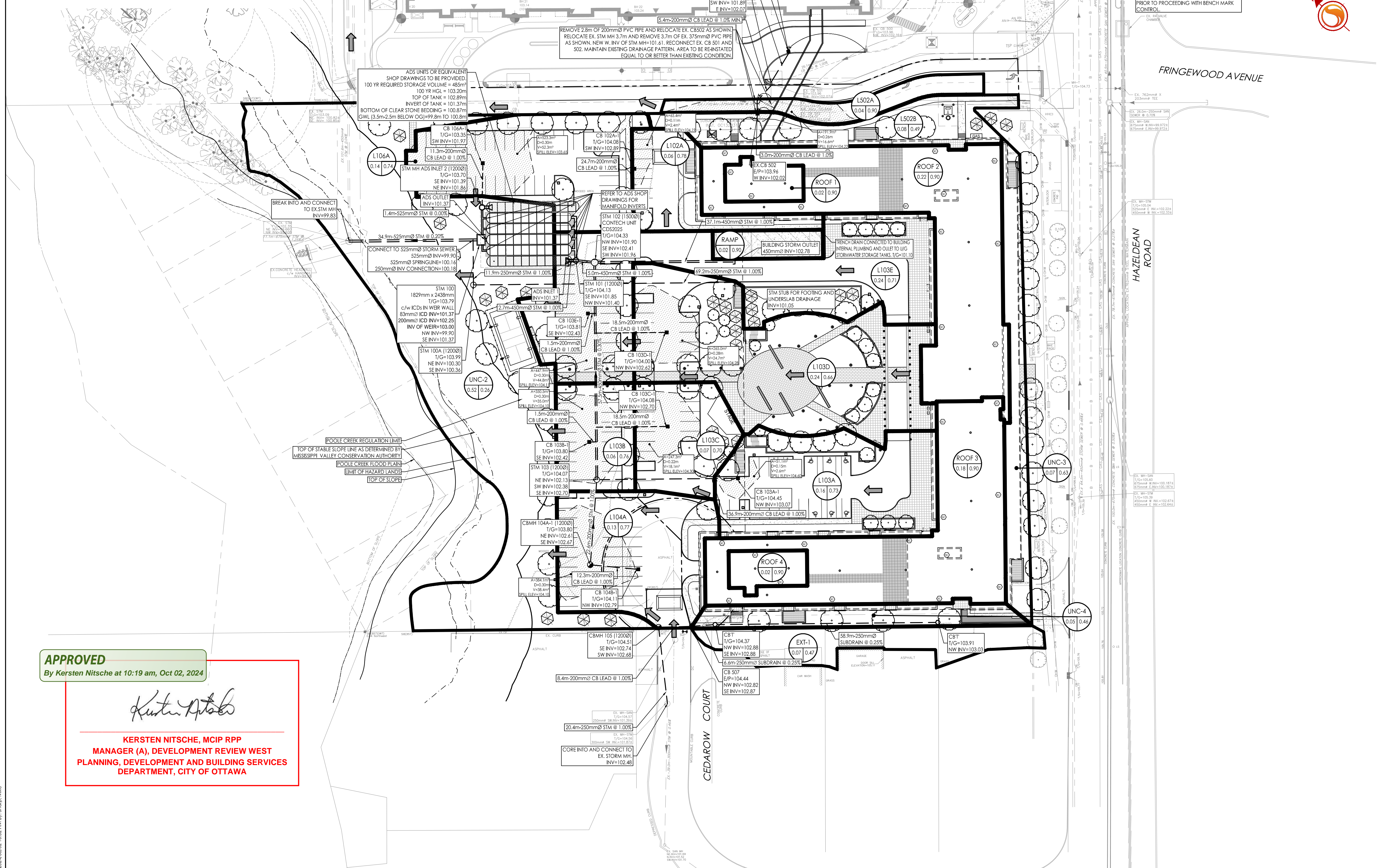


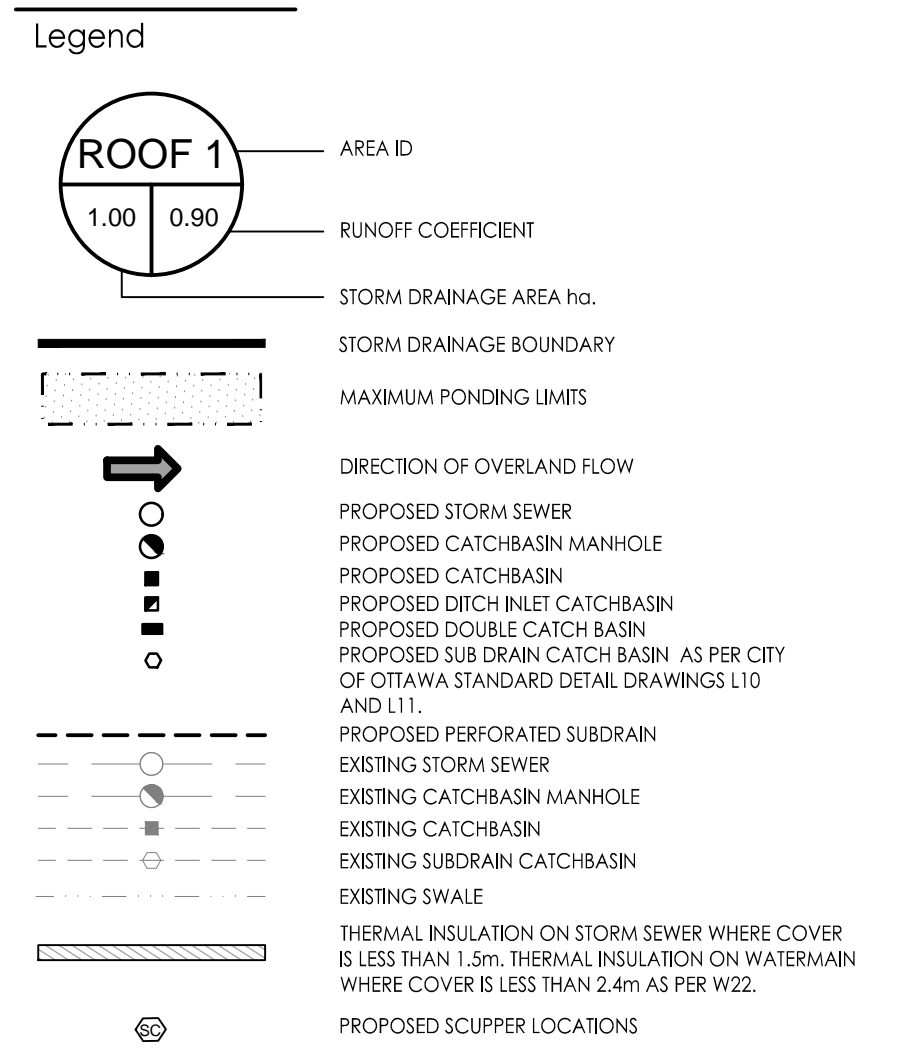
Proposed ICD Schedule									
Area ID	Orifice Name	ICD Invert	ICD Type	2yr Head (m)	2yr Flow (L/s)	100yr Head (m)	100yr Flow (L/s)	100yr Storage (m <sup>3</sup> )	100yr Flow (L/s)
L102A	CB102A-1	102.70	IPEX TEMPEST HF (102mm ORIFICE)	0.33	10.9	1.21	22.8		
L103A	CB103A-1	103.07	IPEX TEMPEST HF (178mm ORIFICE)	0.25	25.2	1.22	69.5		
L103B	CB103B-1	102.42	IPEX TEMPEST HF (83mm ORIFICE)	0.52	9.9	1.25	15.3		
L103C	CB103C-1	102.70	IPEX TEMPEST HF (83mm ORIFICE)	0.67	10.9	1.45	16.5		
L103D	CB103D-1	102.62	IPEX TEMPEST HF (152mm ORIFICE)	0.60	33.3	1.49	56.1		
L103E	CB103E-1	102.43	IPEX TEMPEST HF (127mm ORIFICE)	1.18	35.1	1.36	37.4		
L104A/B	CBM104A	102.61	IPEX TEMPEST HF (102mm ORIFICE)	1.17	21.9	1.34	24.4		
L106A	CB106A-1	101.97	IPEX TEMPEST HF (83mm ORIFICE)	1.05	22.8	1.46	25.0		
L502A/B	EX502-1	102.02	IPEX TEMPEST HF (83mm ORIFICE)	1.27	15.2	2.16	20.0		
ADS TANK	100-01	101.37	200mm CIRCULAR ORIFICE	0.91	12.8	1.83	18.3		
ADS TANK	100-02	102.25	200mm CIRCULAR ORIFICE	0.03	1.9	0.95	78.1		
ADS TANK	100-WF	103.00	500mm VMDE WEIR	0.00	0.0	0.20	58.3		
UNC-4	CBM105	102.68	IPEX TEMPEST HF (83mm ORIFICE)	0.71	11.2	1.78	18.1		

Schedule of Roof Release Rates					
Roof	Number of Drains	Drain Type	100yr Head (m)	100yr Flow (L/s)	100yr Storage (m <sup>3</sup> )
ROOF1	2	Watts Accutrol Weir (50% Open)	0.13	2.3	5.3
ROOF2	9	Watts Accutrol Weir (50% Open)	0.15	11.2	83.8
ROOF3	8	Watts Accutrol Weir (50% Open)	0.15	9.9	69.0
ROOF4	2	Watts Accutrol Weir (50% Open)	0.13	2.3	5.3



Stantec Consulting Ltd.  
400 - 1331 Clyde Avenue  
Ottawa ON  
Tel. 613.722.4420  
www.stantec.com

Copyright Reserved  
The Contractor shall verify and be responsible for all dimensions. DO NOT scale the drawing - any errors or omissions shall be reported to Stantec without delay.  
The Copyrights to all designs and drawings are the property of Stantec. Reproduction or use for any purpose other than that authorized by Stantec is forbidden.



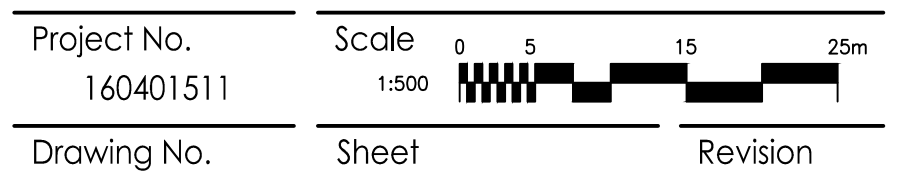
Revision	By	Appd.	YY.MM.DD	
13	REVISED AS PER SITE PLAN	MJS	DT	24.08.01
12	ISSUED FOR CONSTRUCTION	MJS	GR	23.11.21
11	REVISED AS PER CITY COMMENTS	MJS	DT	23.11.21
10	REVISED AS PER CITY COMMENTS	MJS	DT	23.09.01
9	REVISED AS PER CITY COMMENTS	MJS	DT	23.06.30
8	REVISED WATER SERVICING	MJS	DT	23.03.10
7	REVISED ADS SYSTEM	MJS	DT	23.02.13
6	ISSUED FOR SPA AMENDMENT	MJS	DT	22.12.22
5	REVISED AS PER CITY COMMENTS	MJS	DT	22.07.14
4	REVISED AS PER CITY COMMENTS	MJS	DT	22.03.29
3	REVISED AS PER CITY COMMENTS	MJS	TR	21.09.02
2	ISSUED FOR GEOTECH REVIEW	MJS	DT	21.08.03
1	ISSUED TO CITY FOR SPA	MJS	DT	20.05.22

File Name: 160401511-08 MJS DT MJS 19.09.05  
Dwn. Chkd. Dgn. YY.MM.DD

Permit-Seal

Client/Project  
NAUTICAL LANDS GROUP  
2962 Carp Road  
WELLINGS OF STITTSVILLE PH 2  
20 CEDAROW COURT  
OTTAWA, ON

Title  
STORM DRAINAGE PLAN



SD-1 6 of 7 13  
PLAN No. 18190

**APPROVED**  
By Kersten Nitsche at 10:19 am, Oct 02, 2024

*Kersten Nitsche*

**KERSTEN NITSCHKE, MCIP RPP**  
MANAGER (A), DEVELOPMENT REVIEW WEST  
PLANNING, DEVELOPMENT AND BUILDING SERVICES  
DEPARTMENT, CITY OF OTTAWA

V:\01\60401511\design\drawing\160401511-LB.dwg 2024/08/02 10:32 AM By: shap.wae ORIGINAL SHEET - ARCH D

D07-12-23-0004