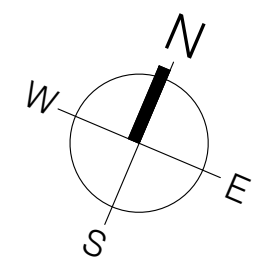


(Formerly Somerset Street)

PIN 04247 - 0250

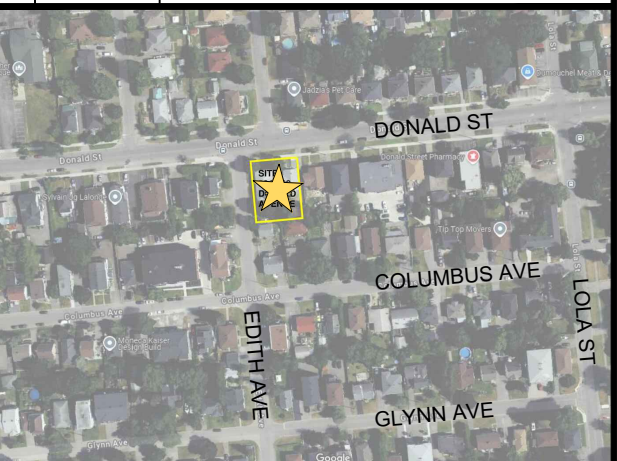
DONALD STREET



ARCHITECTURE + PLANNING

414 Churchill Avenue North
Ottawa, Ontario, K1Z 5C6
613-953-9822 roseline@rjhllca rjhllca

3.	2024-08-14	ISSUED FOR SITE PLAN CONTROL
2.	2024-07-25	ISSUED FOR COORDINATION
1.	2024-05-28	ISSUED FOR COORDINATION
No	Y / M / D	REVISION



CONSULTANTS

Surveyor:
Annis O'Sullivan Vollebek Ltd.
Andrew Sheph: andys@aovltd.com

Civil Engineer:
T.L. Mak Engineering Consultants Inc.
Tony Mak: tmak@telnet.ca

Landscape Architect & Tree Conservation:
James B. Lennox & Associates Inc.
James Lennox: j@jbla.ca
Mike Lennox: m@jbla.ca

Geotechnical Engineer:
Paterson Group
Dinesh Rajendran: drajendran@patersongroup.ca
Scott Dennis: sdennis@patersongroup.ca

ESA Phase 1:
Paterson Group
Yolanda Tang: ytang@patersongroup.ca

Planning:
RJM Architecture + Planning
Roseline Hill: roseline@rjhllca
Mirja Reid: mirja@rjhllca

Stationary Noise Study:
Paterson Group
Chitra McLaughlin: cmclaughlin@patersongroup.ca
Stephanie Boisvenue: sboisvenue@patersongroup.ca

Mechanical & Electrical Engineer:
LRL Associates Ltd.
Martin Tessier: mtessier@lrl.ca

Structural Engineer:
Cleland Jardine Engineering Ltd.
Rob Nevin: rnevin@clelandjardine.com

It is the responsibility of the appropriate contractor to check & verify all dimensions on site and report all errors &/or omissions to the architect. All contractors must comply with all pertinent codes & by-laws, & use proprietary products as directed by the manufacturer. Do not scale drawings. Copyright reserved.

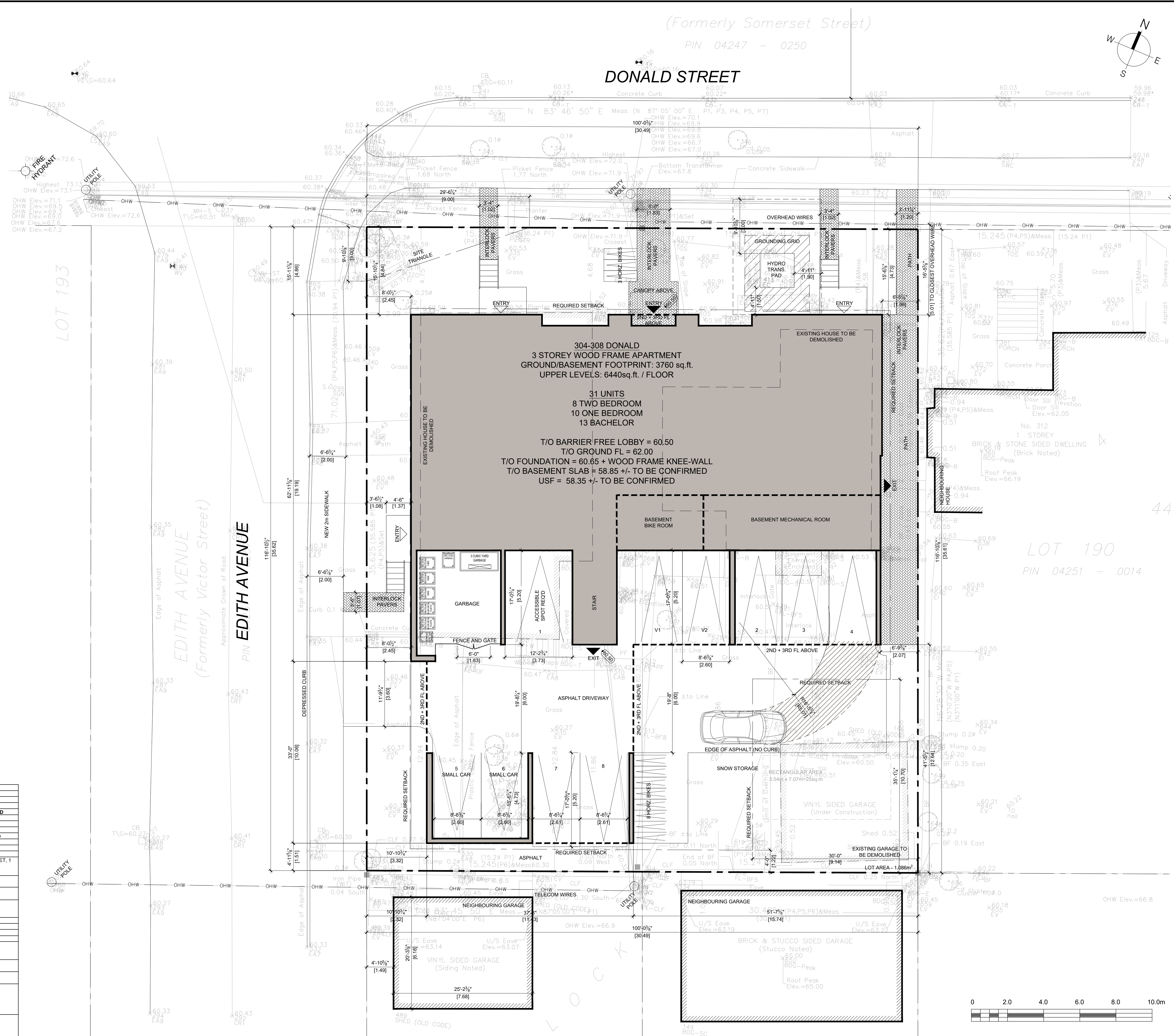
DONALD / EDITH APARTMENTS
304-308 Donald St, Ottawa, Ontario

SITE PLAN

Drawn By: AW/RV/ML Date: AUG 2024
Project No: 2408 Scale: 1:100

A0.1

PLOTTED Tue, 17 Sep 2024



SITE NOTES

LEGAL BOUNDARY INFORMATION WAS DERIVED FROM SURVEY COMPLETED BY ANNIS O'SULLIVAN VOLLEBEK LTD, SURVEYOR ANDREW SHEP, DATED APRIL 1, 2024

PIN - 04251-0012 & 04251-0013
READ DOCUMENTS IN CONJUNCTION WITH:-

-SITE SERVICING & GRADING PLANS BY: T.L. Mak Engineering Consultants Ltd.

-TREE INFORMATION REPORT BY: James B. Lennox & Associates Inc.

-LEGAL SURVEY BY: Annis O'Sullivan Vollebek Ltd.

LEGEND

AC	- AIR CONDITIONING UNIT
BW	- BAY WINDOW
CB	- CATCH BASIN
CC	- CONCRETE CURB
CP	- CONCRETE PAD
DP	- DEPRESSED CURB
FH	- FIRE HYDRANT
K	- KIOSK (BELL, ROGERS, TRAFFIC)
LS	- LIGHT STANDARD
MB	- MAILBOX (CANADA POST)
MH	- MAINTENANCE HOLE
OHW	- OVERHEAD WIRE
RW	- RETAINING WALL
SBFY	- SETBACK FRONT YARD
SBRY	- SETBACK REAR YARD
SBSY	- SETBACK SIDE YARD
SE	- SUNKEN ENTRY
T	- TRANSFORMER
UP	- UTILITY POLE
WS	- WATER ENTRY & SERVICING
WW	- WINDOW WELL

NOTES:

- RAUC ZONING DESIGNATION
- AREA X AS PER SCHEDULE 1A

ZONING (9 UNIT + APARTMENT)	PERFORMANCE STANDARD	REQUIRED	PROVIDED
MIN. LOT WIDTH	15m	30m	30.5m
MIN. LOT AREA (T.162B(11))	38m	30.5m	30.5m
MIN. LOT AREA (T.162B(12))	450m ²	1096m ²	1096m ² - VARIANCE REQ'D
MAX. HEIGHT	11m	-	-
MIN. SIDE YARD SETBACK	1.5m	1.9m	-
MIN. FRONT YARD SETBACK	4.5m	4.5m	-
MIN. CORNER SETBACK (S.123(4b))	2.7m (MATCH NEIGHBOUR)	2.49m - VARIANCE REQ'D	-
MIN. REAR YARD SETBACK (T.144A)	30% OF LOT DEPTH (10.7m)	12.6m	-
MIN. REAR CORNER (S.144(5b))	1.2m	1.5m	-
MIN. INTERIOR YARD (S.144(6))	30% OF LOT WIDTH (8.1m)	15.7m	-
MIN. PRINCIPAL ENTRANCES PROVIDING STREET ACCESS (S.161(15))	1	3 FACING DONALD STREET, 1 FACING EDITH AVENUE	-
MIN. PRINCIPAL ENTRANCE FOR EVERY 12m (S.161(15.ii))	1 (TOTAL 3)	3	-
MIN. GLAZING ON FRONT FACADE (S.161(15.ii))	25%	-	34%
MIN. FRONT FACADE RECESSED AN ADDITIONAL 0.6m FROM THE FRONT SETBACK LINE (S.161(15.iii))	20%	-	-
MIN. 2 BDRM UNITS (S.161(16b))	25%	8 (25.8%)	-
MIN. PARKING SPACES (S.101(3a))	0.5 PER DWELLING UNIT (10)	8 - VARIANCE REQ'D	-
MIN. VISITOR PARKING SPACES	0.1 PER DWELLING UNIT (2)	-	-
MIN. BICYCLE PARKING SPACES	0.5 PER DWELLING UNIT (16)	31	-
AMOUNT OF BIKE PKG WHICH MAY BE LOCATED IN A LANDSCAPED AREA AT-GRADE	50% OF REQ'D (8), OR 15 SPACES, WHICHEVER IS GREATER	11	-
MIN. SOFT LANDSCAPING IN THE FRONT YARD (S.161)	40%	66%	-
MIN. SOFT LANDSCAPING IN THE REAR YARD (S.161(15b.iii))	50%	50%	-
MIN. AGGREGATED RECTANGULAR AREA WHOSE LONGER DIMENSION IS NOT MORE THAN TWICE ITS SHORTER DIMENSION (S.161(15b.iv))	25m ²	PROVIDED	-
FRONT YARD AND CORNER SIDE YARD MUST HAVE PARKING PROHIBITORS (S.161(15e)). PROVIDED	-	-	-

